

IDAHO

Office of the State Board of Education

Senate Education Committee

Thursday | February 4, 2016
Matt Freeman, Executive Director



Board of Education Members



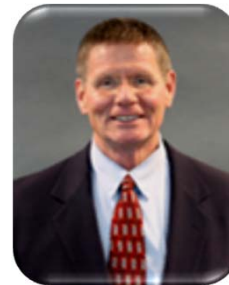
Don Soltman,
President



Emma Atchley,
Vice-President



Dr. Bill Goesling,
Secretary



Richard Westerberg



Debbie Critchfield



Dr. David Hill

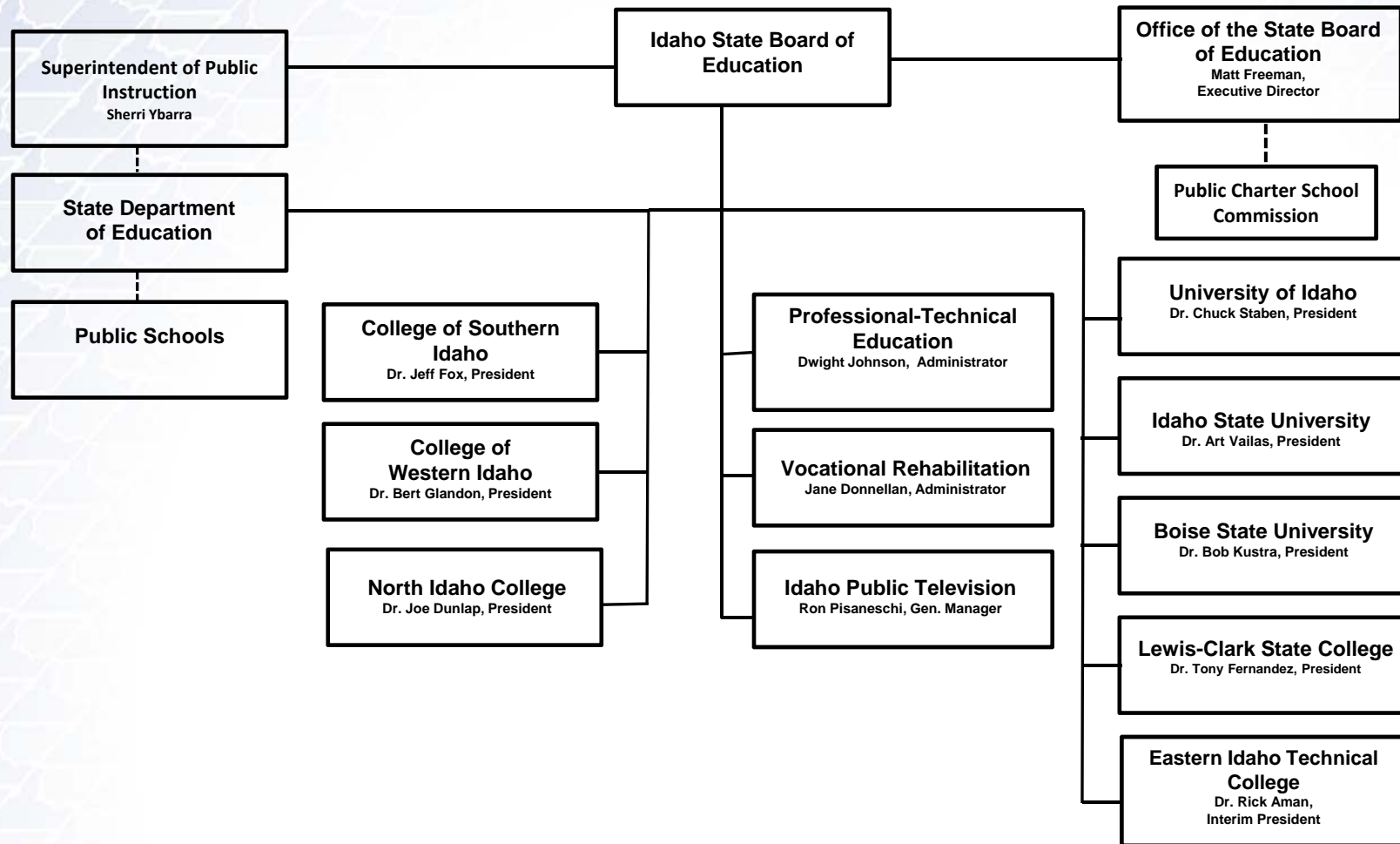


Dr. Linda Clark

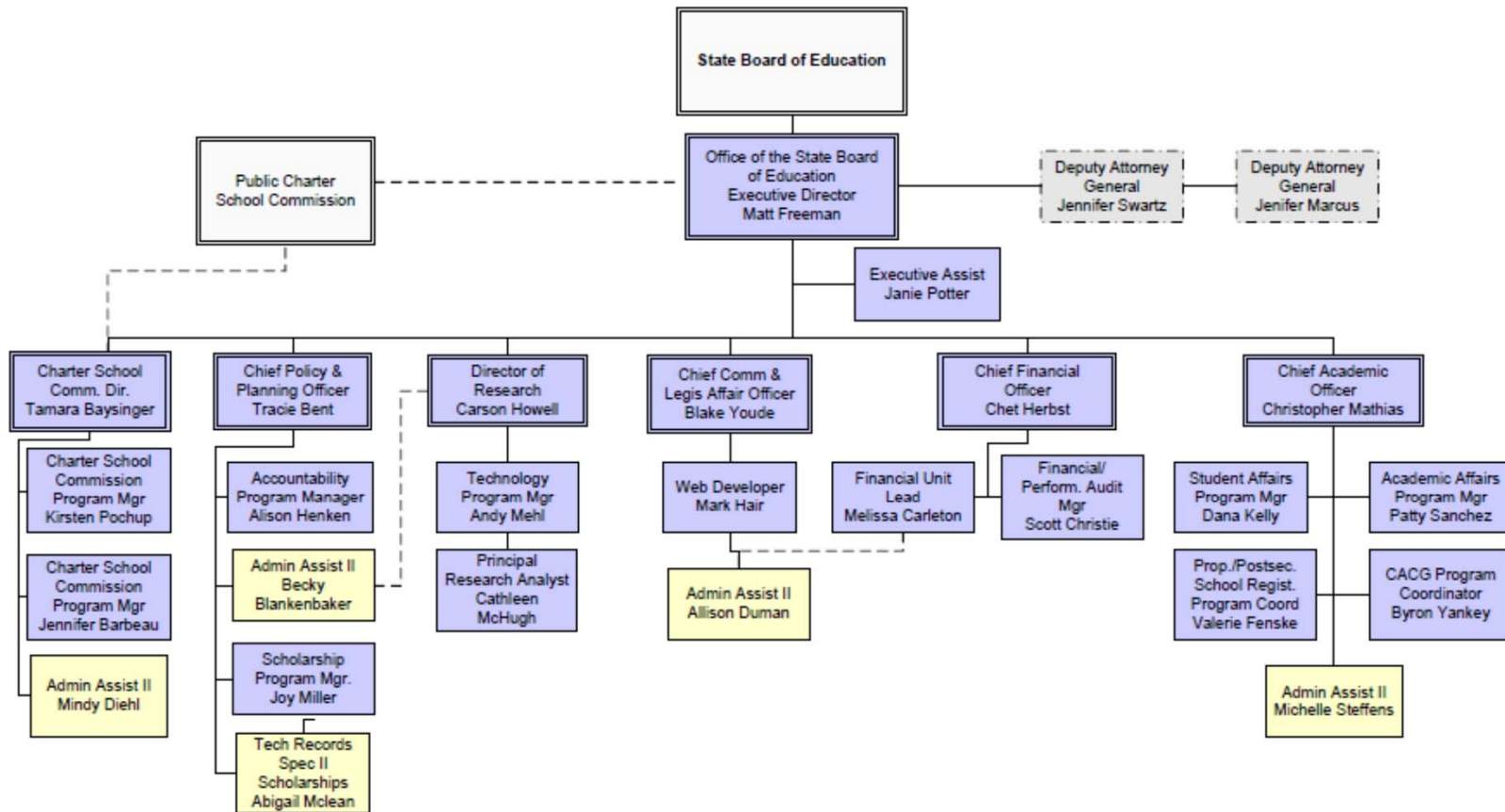


Sherri Ybarra

State Board of Education | Organization Chart



Office of the State Board of Education



Office of the State Board of Education

Board meetings

Board governing policies

Tuition & Fees

Budget requests

Capital projects & debt financing

Employment contracts

Strategic plans

Academic program approval

Administrative rules

Proposed legislation

Other Oversight Responsibilities

Staff Board committees (e.g. policy, academic affairs, audit, finance)

Research and SLDS

Scholarships

K-12 liaison (accountability, teacher prep)

Public Charter School Commission

Register proprietary schools and private postsecondary institutions

How the Board's staff stacks up

Idaho

~291,000 public school students

~72,300 postsecondary students

Rhode Island

~143,000 public school students

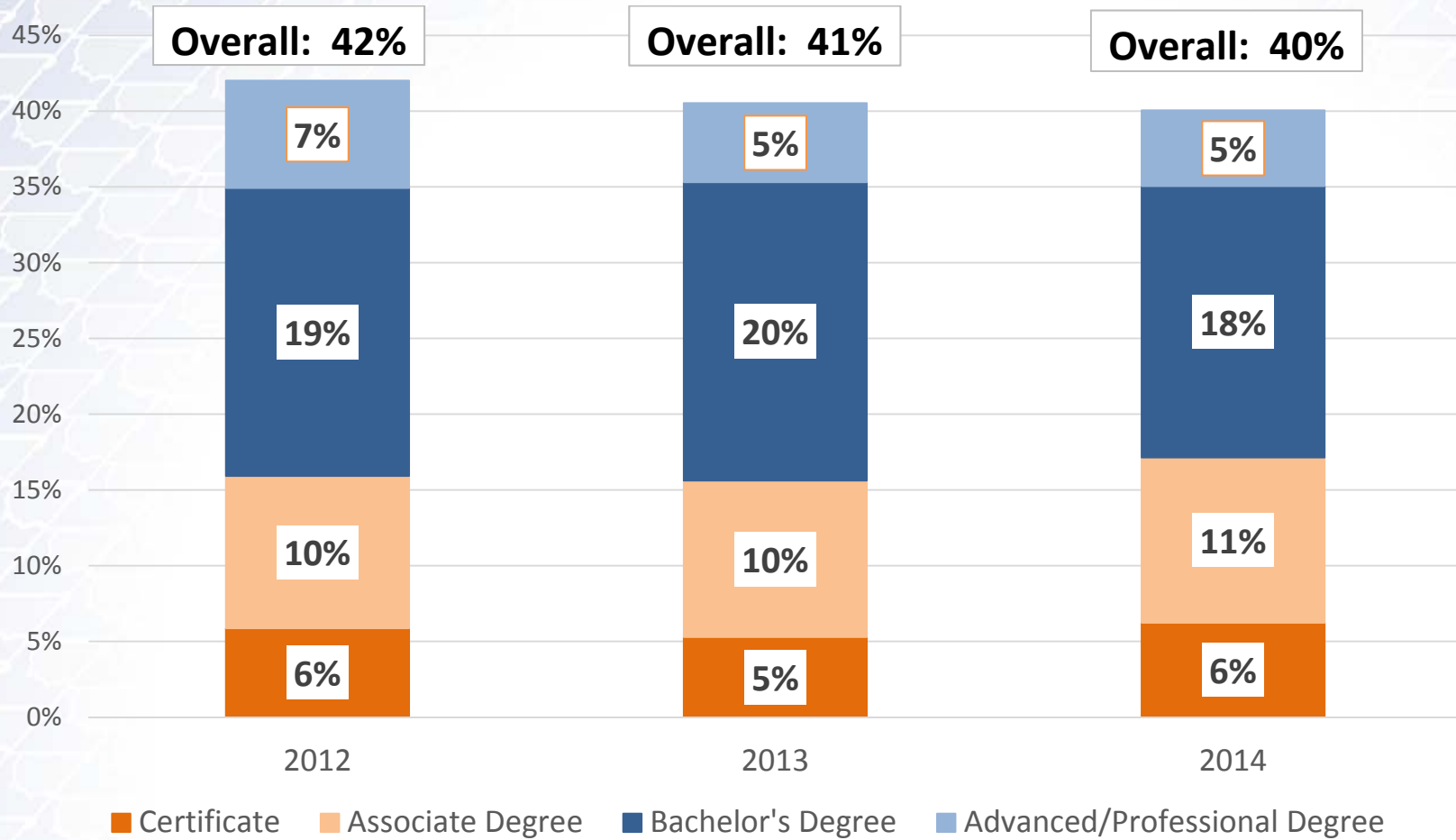
~43,000 postsecondary students



STATE BOARD OF EDUCATION | 60% Goal

60% of Idahoans ages 25 – 34
hold a postsecondary certificate
or degree by the year 2020

60% Goal

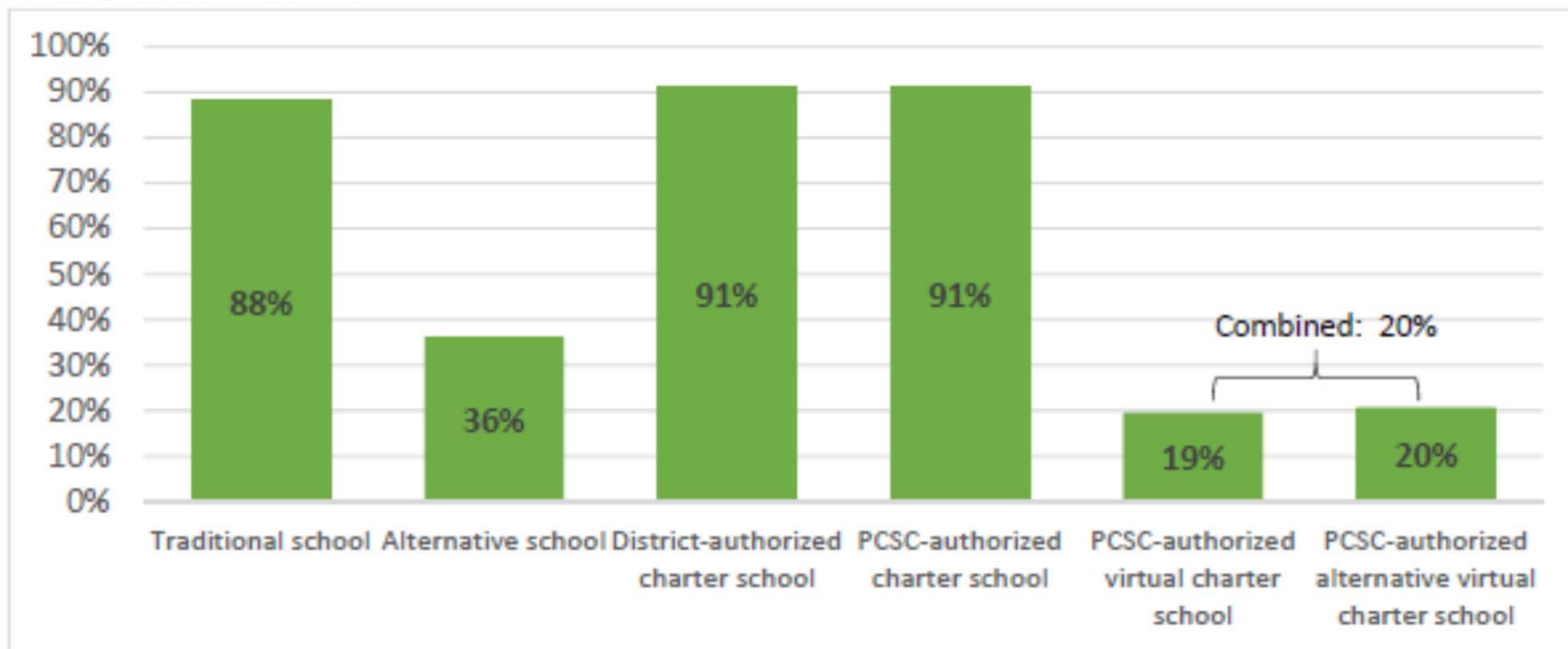


Retention of College Grads

Post Graduation EMPLOYMENT – Combined Idaho Public Colleges and Universities Graduates Employed in Idaho									
Academic Year	*First Year		*Second Year		*Third Year		*Fourth Year		Total
	Employed	%	Employed	%	Employed	%	Employed	%	Graduates
2010-11	7,067	65%	6,534	60%	5,798	53%	5,484	50%	10,873
2011-12	7,666	63%	6,734	56%	6,290	52%			12,128
2012-13	7,257	57%	6,718	53%					12,711
2013-14	6,273	54%							11,648
**2014-15									9,494

* Years after graduation include one full year following graduation to gain employment and be represented in Idaho unemployment insurance tax files. ** Partial employment records for the year of reference. Source: Idaho State Longitudinal Data System, December 2015

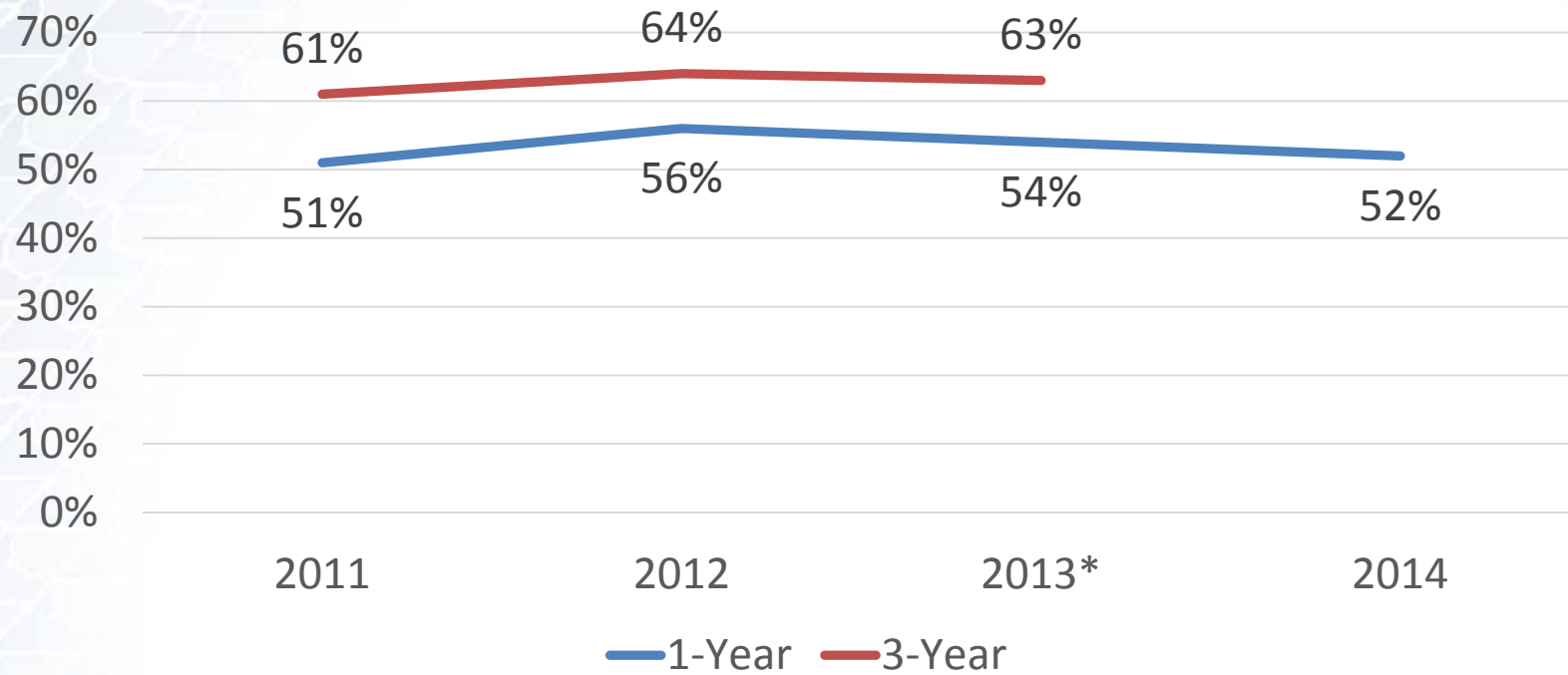
High School Graduation Rate



High School Graduation Rate

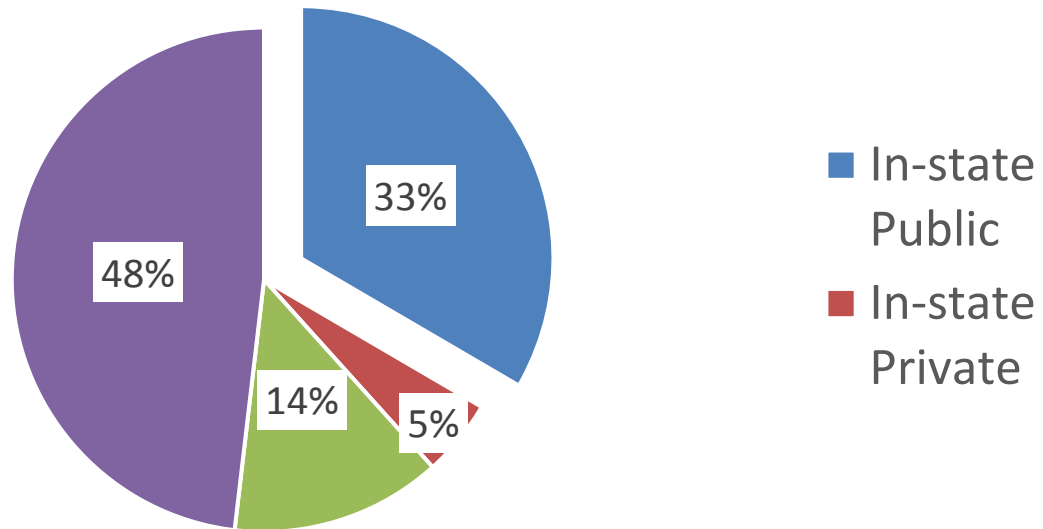
- ❖ In 2015 Idaho reported high school graduation rates using a new methodology required by the federal government.
- ❖ The reported high school graduation rate fell from 84.1% for the Class of 2013 to 77.3% for the Class of 2014.
- ❖ These rates **are not comparable** as they are based on very different methodologies.
- ❖ It **cannot** be said that the Class of 2014 graduated at a lower rate than the Class of 2013.

Idaho's Go On Rate

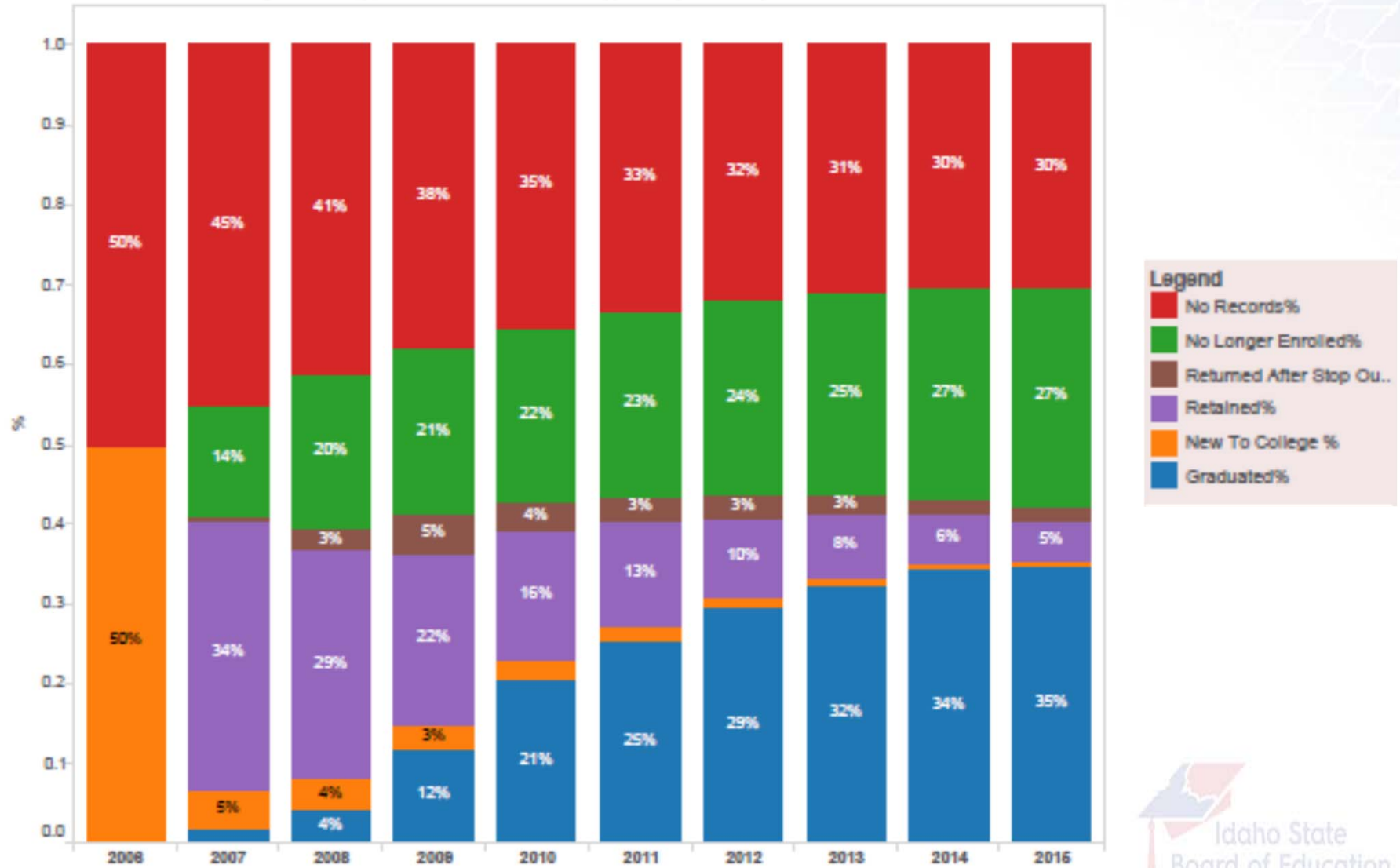


Idaho's Go On Rate

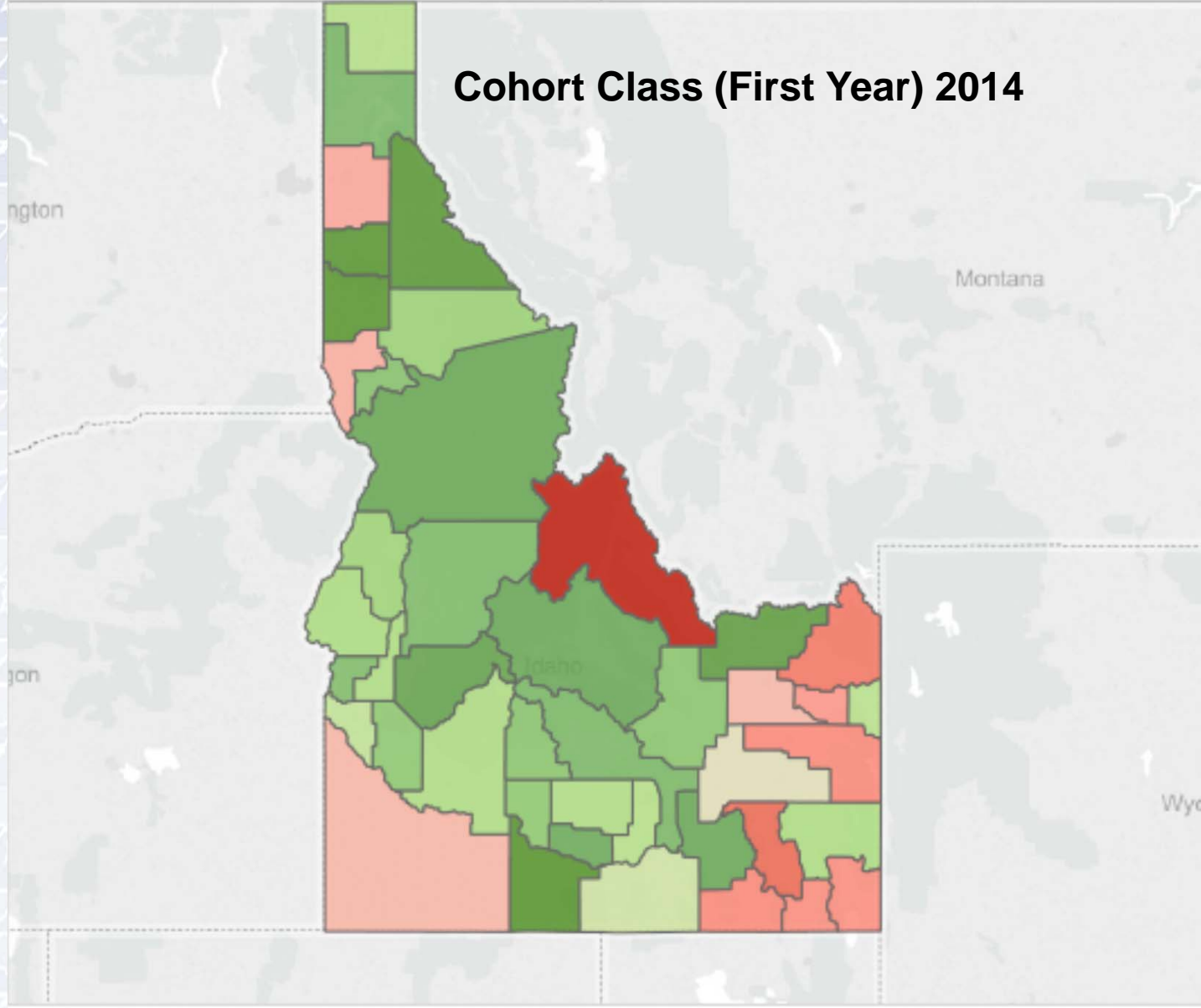
2013-2014 HS Graduating Class
Enrolled within 1-Year



Idaho High School Feedback Report - Postsecondary Progress - Through Spring 2015



Cohort Class (First Year) 2014



Percent Go On Rate



Idaho Public Colleges & Universities

Fall 2015 Enrollment

Academic Undergraduate	61,059
Graduate/Professional	6,343
Professional Technical	<u>4,958</u>
Total	72,360
Workforce Training	38,009*

* 2014-2015

Strategies to Increase Go On Rate

- Streamlining college application process
- Holding down cost of college
- Increasing state financial aid

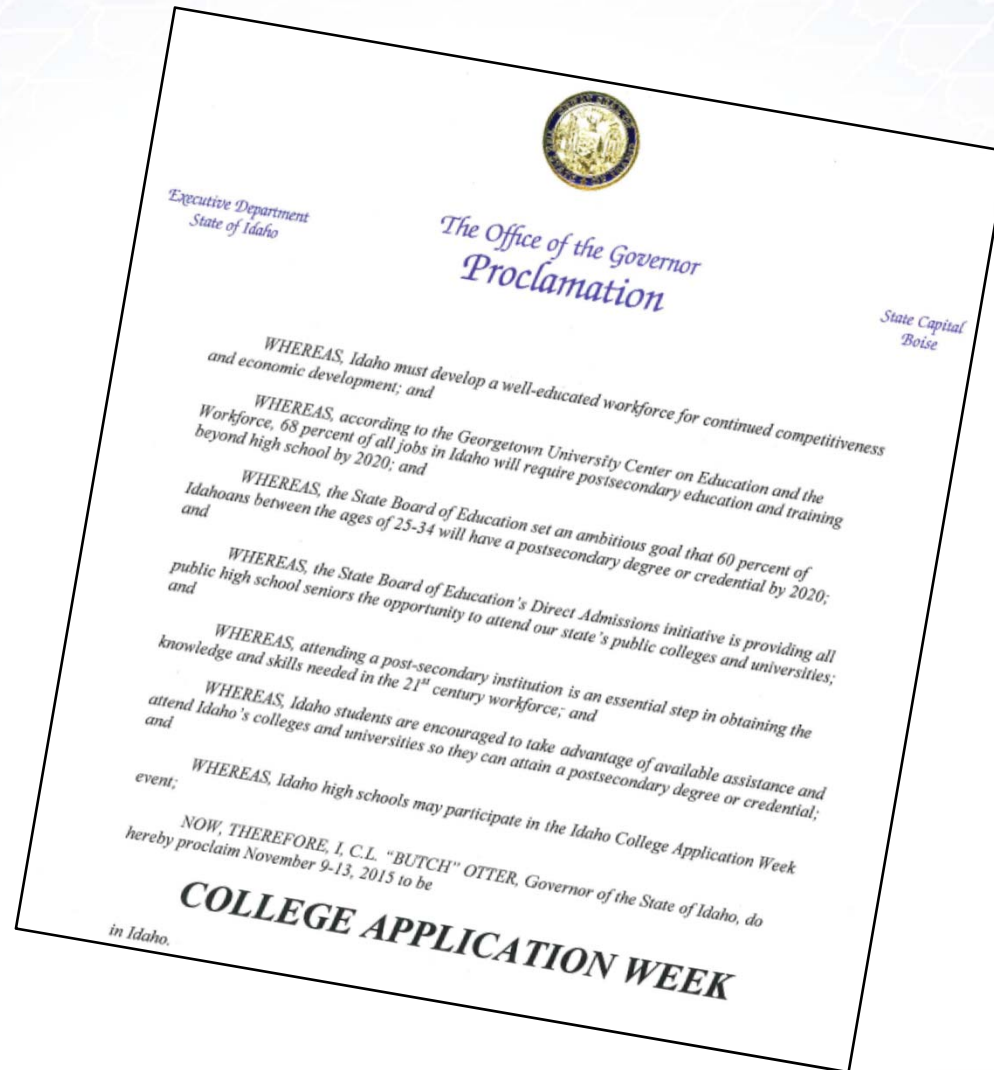


Direct Admissions



Direct Admission by Legislative District

Senator (Leg. Dist.)	Group of 6	Group of 8	Total
Mortimer (30)	623	834	1,457
Thayn (8)	245	196	441
Nonini (3)	788	609	1,397
Patrick (25)	632	573	1,205
Souza (4)	387	354	741
Den-Hartog (22)	1,225	1,656	2,881
Anthon (27)	314	349	663
Buckner-Webb (19)	847	1,129	1,976
Ward-Engleking (18)	847	1,129	1,976





Next Steps Idaho is here to help get every student in the state ready for life beyond high school.

Whether you've got your sights set on a four-year college, community college, a certification program, or the military, we're here to help—every step of the way. No matter where you are along the path to graduation, we're here to make sure your next step is a cinch.

Seniors: Your Idaho college acceptance letter will arrive in November.

Find out what [you need to do next](#).

Do you need college scholarships?

[The Idaho Opportunity Scholarship](#) application process for fall 2016 awards is now open.

Calendar

15

February

Gear Up Idaho Scholarship Application Deadline

12:00 AM - 11:59 PM

15

February

Governor's Cup Scholarship Application Deadline

12:00 AM - 11:59 PM

School's in.

Prepare to [talk to your counselor](#) about how they can help you achieve your goals.

SCROLL DOWN OR JUMP TO YOUR GRADE:

[8](#) [9](#) [10](#) [11](#) [12](#)

2015-16 Tuition & Fees

Lowest Tuition increases in **15 years**

Boise State University = +3.5%

Idaho State University = +3.3%

Lewis-Clark State College = +1.7%

University of Idaho = +3.5%

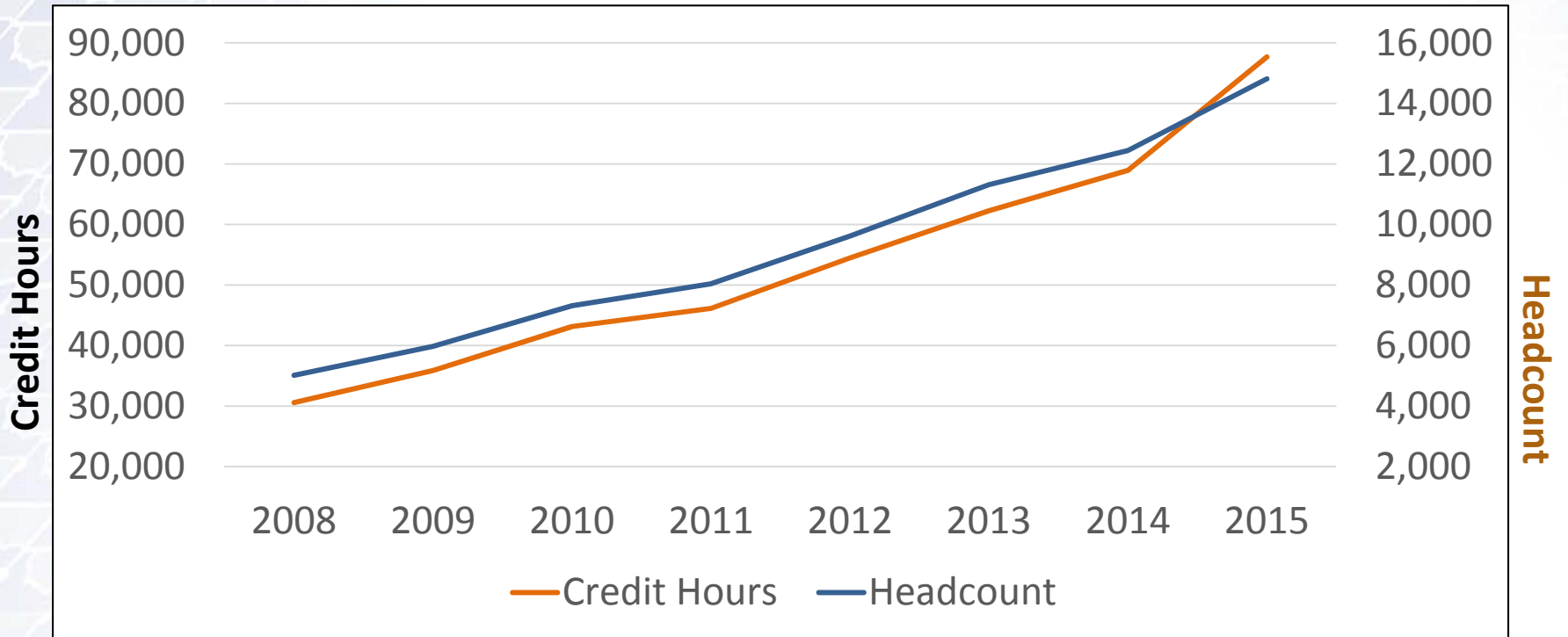
Increasing Affordability

- Advanced Opportunities
- Opportunity Scholarship
- Tuition Lock
- Adult Degree Completion Scholarship
- New Community College



Statewide Dual Credit

Annual Credit Hours Taken & Enrollment



Community College Expansion

IDAHO FALLS COMMUNITY COLLEGE FEASIBILITY STUDY

Exploration of community interest, support and concerns related to the establishment of a Community College in Idaho Falls.

Prepared by
Gee Consulting LLC
Spring 2015



Idaho Opportunity Scholarship

- ❖ \$5 million (ongoing General Funds)
- ❖ **RECOMMENDED BY THE GOVERNOR**



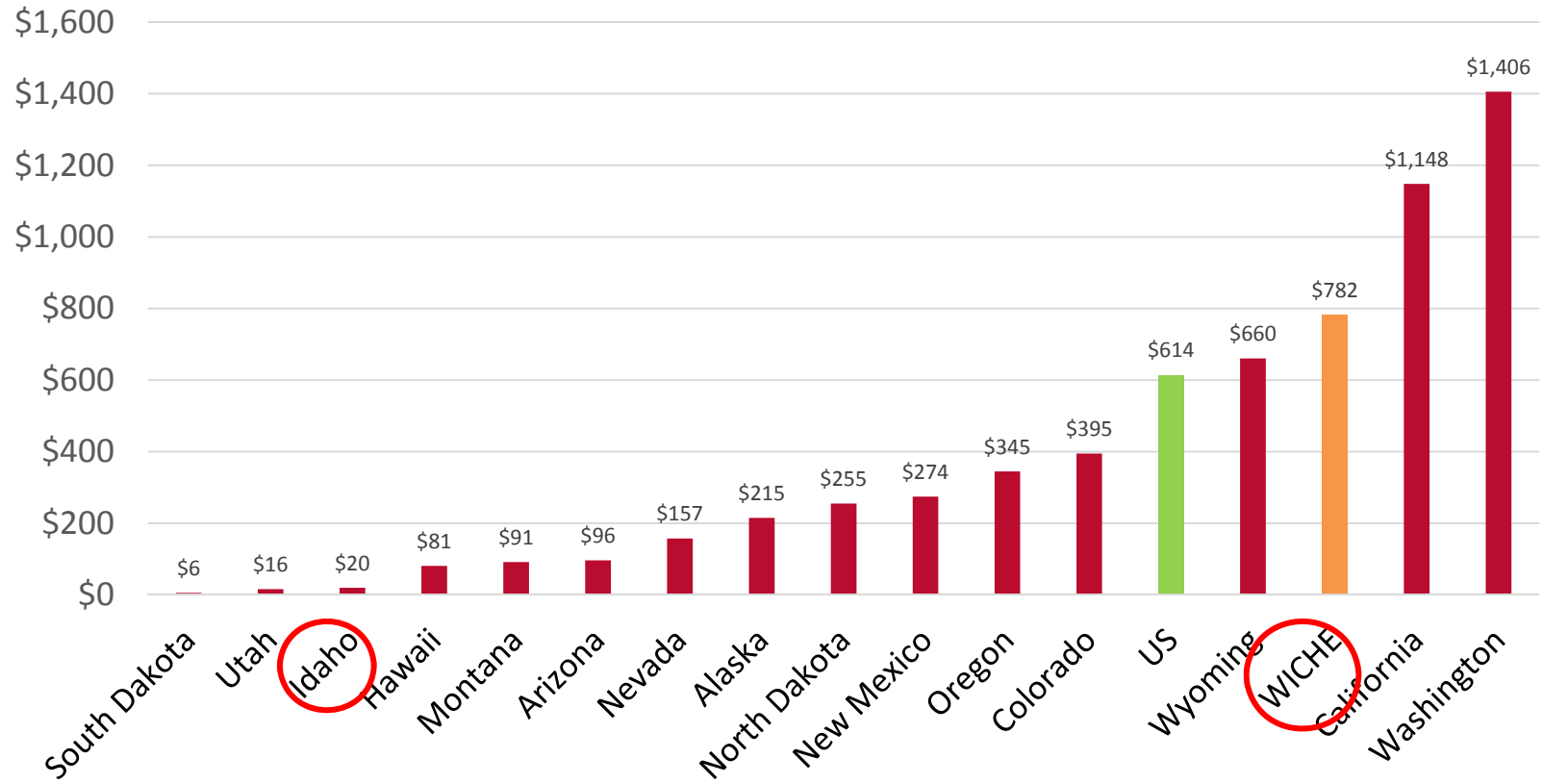
	2014-15	2015-16	% Change
Eligible Applicants	1,741	4,017	131%
New Awards	1,305	1,158	-11%
Renewal Awards	116	742	535%

Idaho Opportunity Scholarship

- ❖ 2015-16: average award = \$2,881 (out of a \$3,000 maximum) and the average GPA is 3.73
- ❖ 2016-17 snapshot: 2,502 applications, up from 2,381 same time last year; 1,277 renewal applications to date (a rate of 67%)
- ❖ Legislation to transfer investment of fund corpus from State Treasurer to Endowment Fund Investment Board



Need-Based Grant Aid Awarded per FTE in WICHE State per FTE, 2013-14



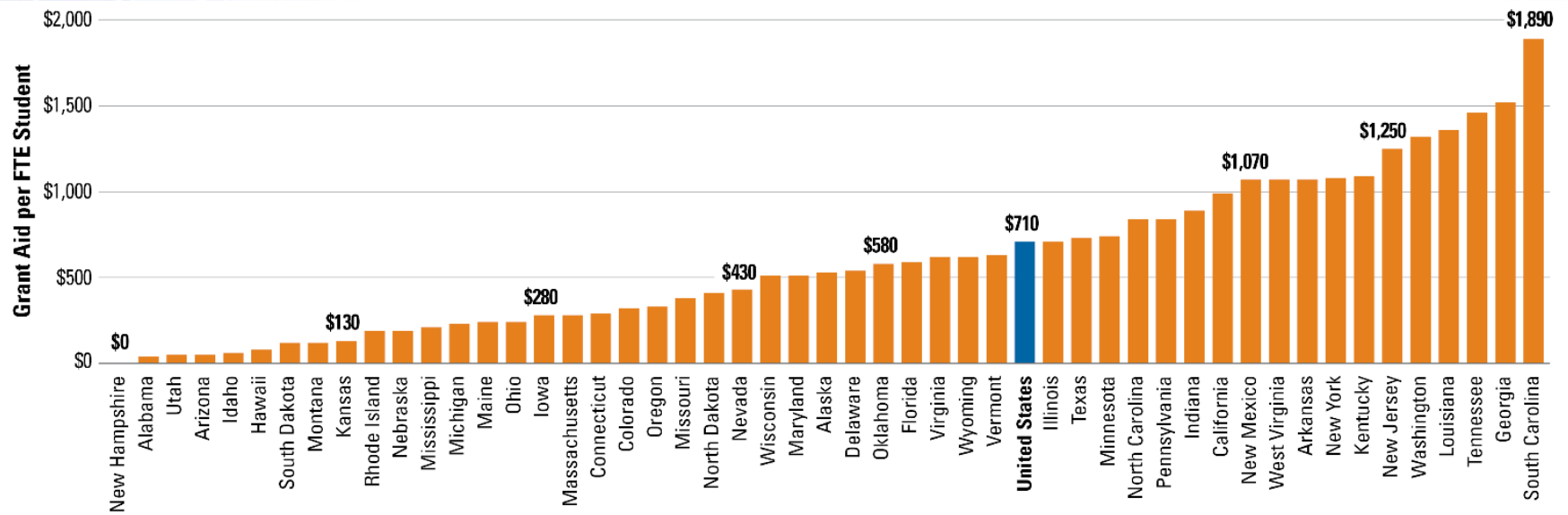
SOURCE: WICHE Benchmarks 2015, *Need-Based Grant Aid Awarded by State Grant Programs per FTE*, Figure 10

Adult Degree Completion Scholarship

Governor's Initiative = \$5M ongoing General Funds

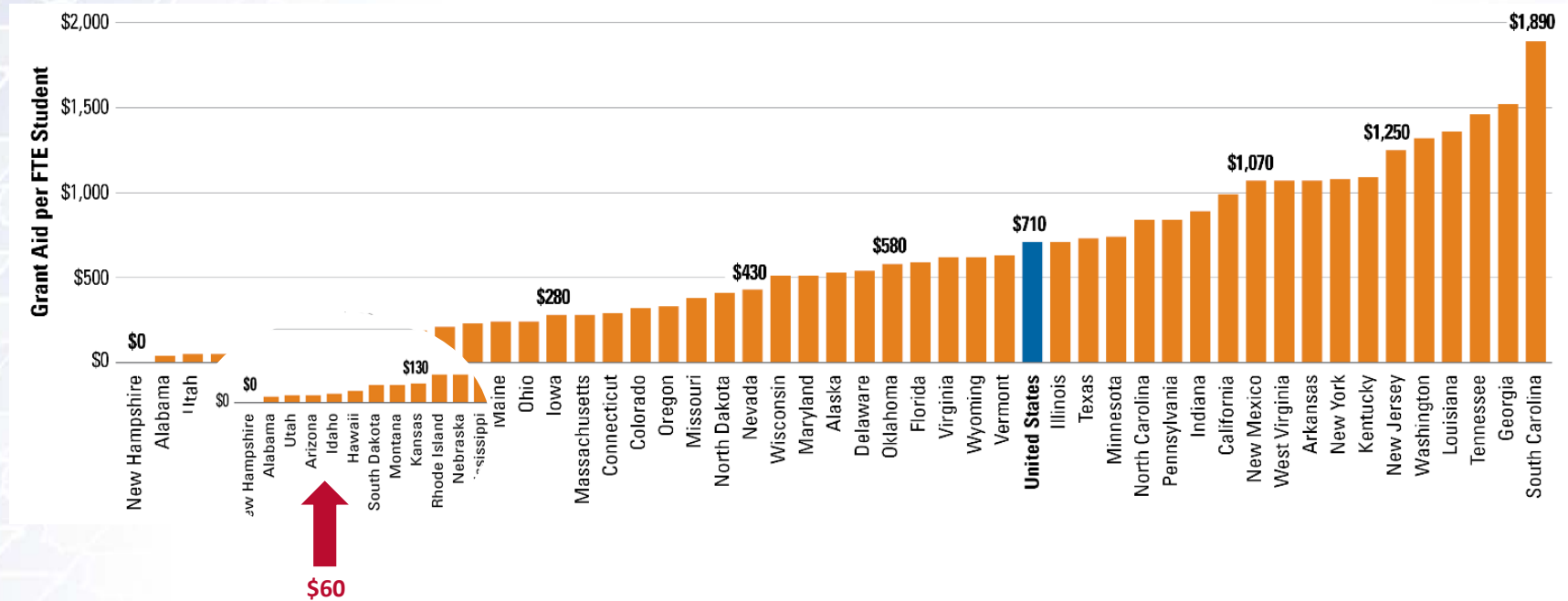
- ❖ For use at any Idaho public higher education institution
- ❖ To earn first undergraduate degree
- ❖ Stopped-out three years or more
- ❖ Minimum of 30 credits earned from any institution
- ❖ Enroll at least part-time (minimum of 6 credits per semester)
- ❖ Demonstrate financial need
- ❖ Up to \$3,000 per year for maximum 8 consecutive semesters

State Grant Aid per Full-Time Equivalent (FTE) Undergraduate Student by State, 2013-14



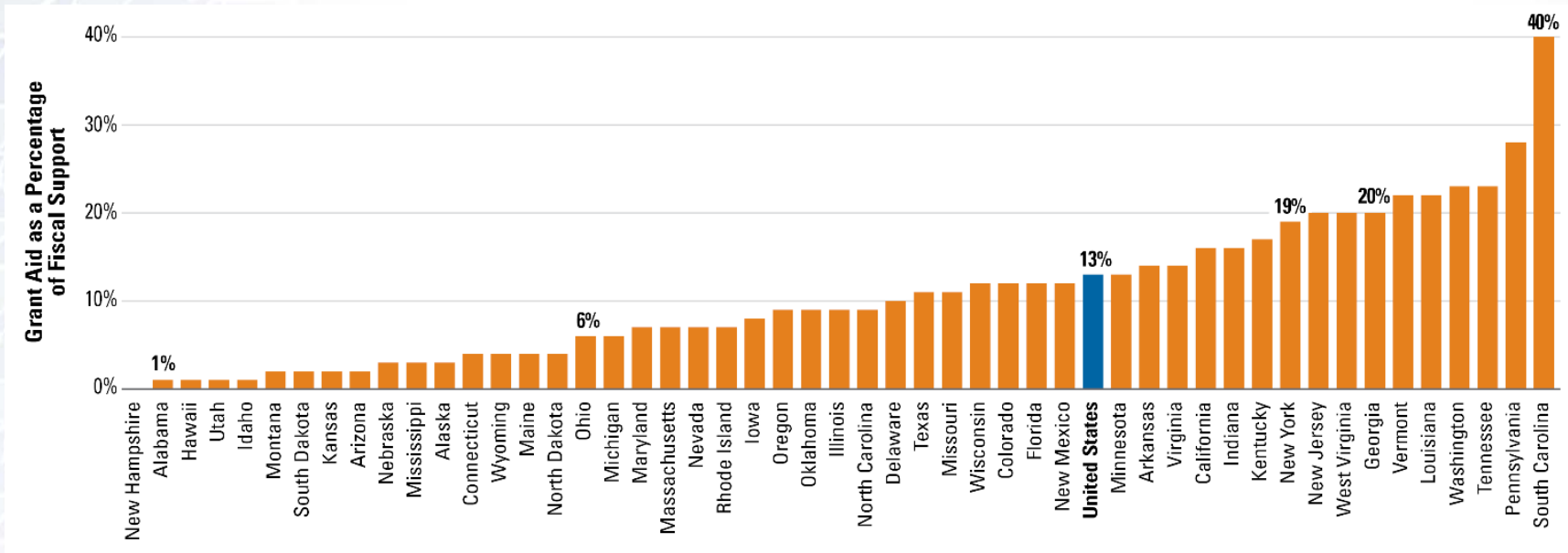
SOURCE: The College Board, *Trends in Student Aid 2015*, Figure 29A

State Grant Aid per Full-Time Equivalent (FTE) Undergraduate Student by State, 2013-14



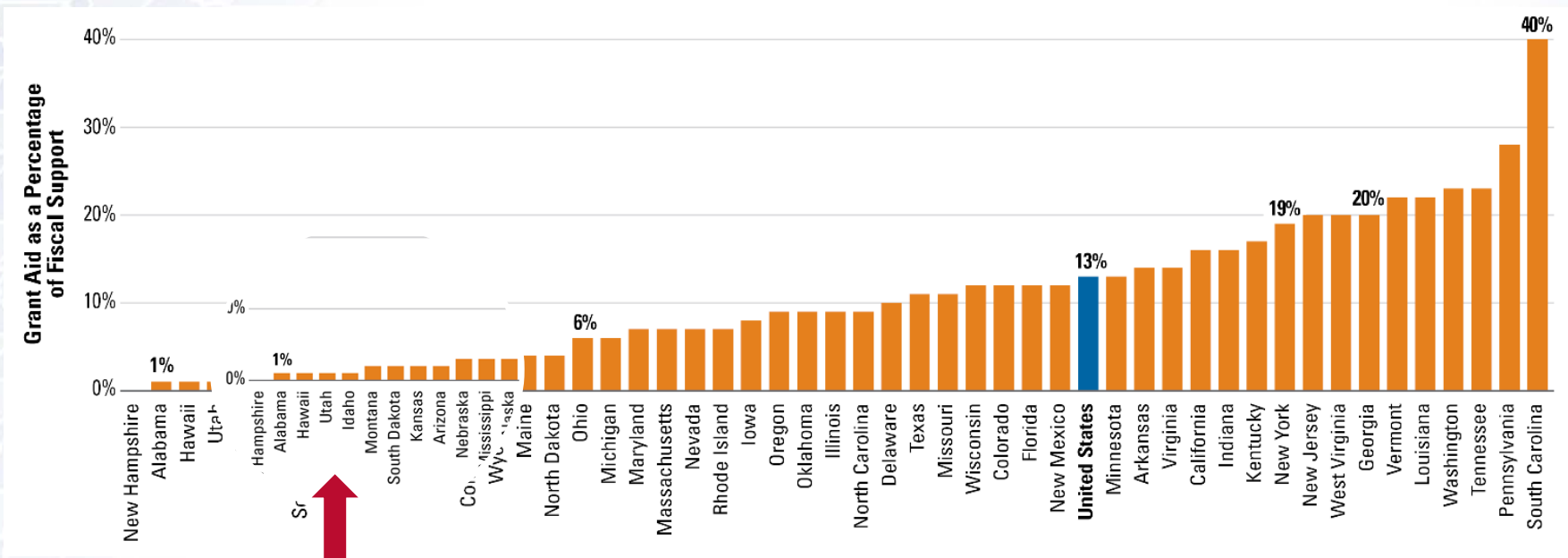
SOURCE: The College Board, *Trends in Student Aid 2015*, Figure 29A

State Grant Expenditures as a Percentage of Total State Support for Higher Education by State, 2013-14



SOURCE: The College Board, *Trends in Student Aid 2015*, Figure 29B

State Grant Expenditures as a Percentage of Total State Support for Higher Education by State, 2013-14



SOURCE: The College Board, *Trends in Student Aid 2015*, Figure 29B

Tuition Lock



- ❖ First-time, full-time resident undergraduates
- ❖ Offers stability and predictability
- ❖ Incentivizes timely completion
- ❖ Maintain satisfactory academic progress
- ❖ Five-year sunset clause



Tuition Lock

- ❖ \$0 fiscal impact in FY2017; staggered fiscal impact over next four years
 - Yr 2 (FY18) = \$1.7M
 - Yr 3 (FY19) = \$4.3M
 - Yr 4 (FY20) = \$6.7M
- ❖ Annual appropriation required to offset any tuition increase over the locked-in rate
- ❖ \$10M set aside as a backstop during downturns in the economy

Change in Employee Compensation

GOVERNOR'S RECOMMENDATION = 3%



DHR survey: Idaho is 16%
below market
DHR recommendation: 3%

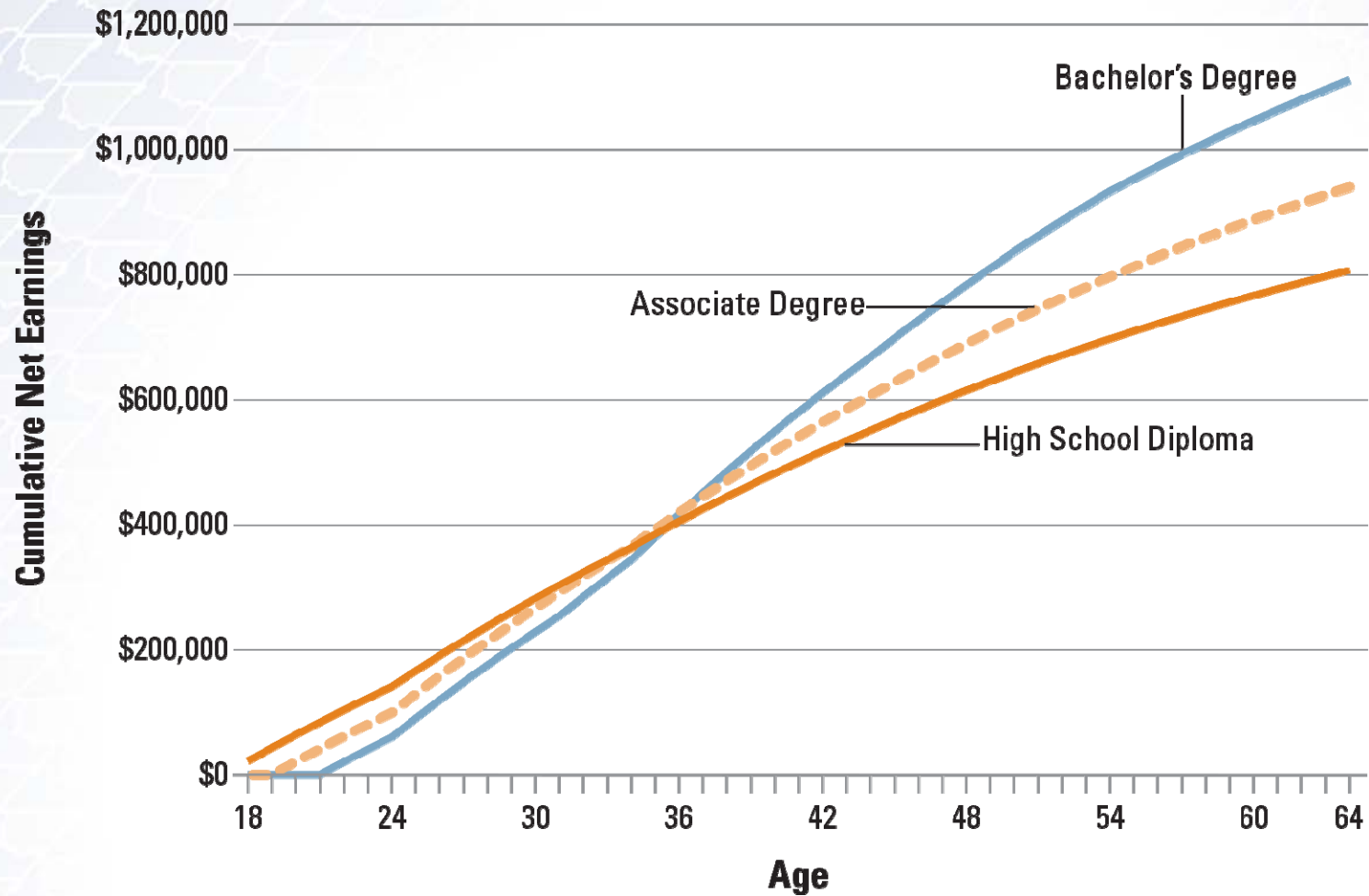


SHEEO survey: Idaho is
between 40 - 56% of median
salary

College: A Cost – Benefit Analysis



Cumulative Earnings by Education Level



Source: The College Board, *Education Pays 2013*, Figure 1.3: Estimated Cumulative Earnings Net of Loan Repayment for Tuition and Fees, by Education Level



College: Still a Good ROI

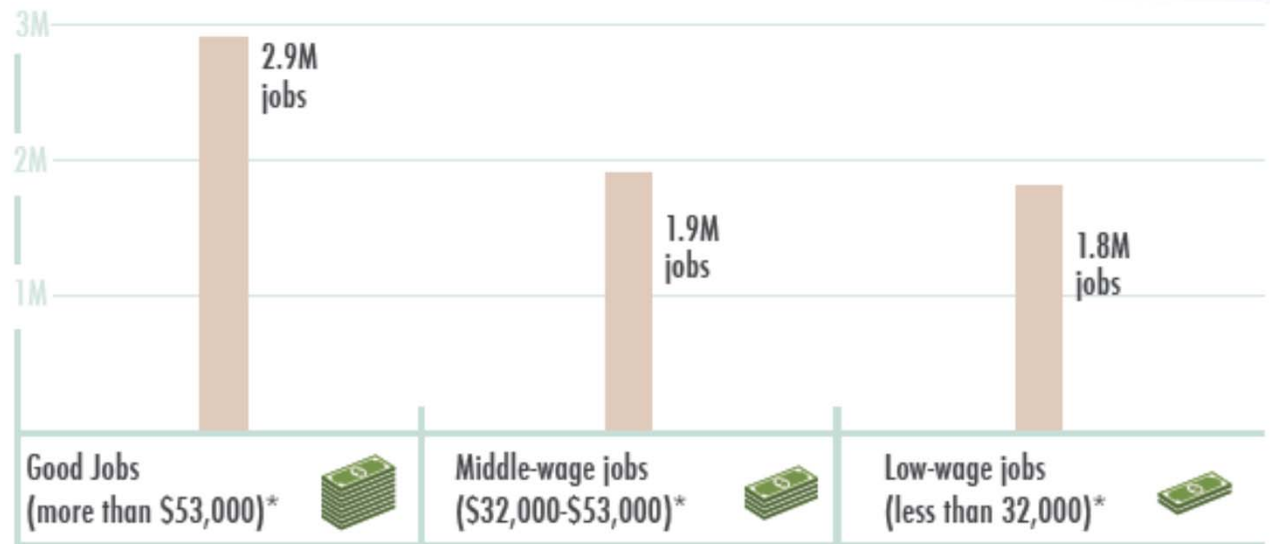
- ❖ Benefits of associate's and bachelor's degrees far outweigh costs
- ❖ Both degrees have earned a return of about 15% over the past decade (2001-2013)
- ❖ Since 1950, investing in stocks has yielded an annual return of 7%; bonds 3%
- ❖ Economic benefits associated with a college degree last an entire lifetime

Source: Jaison R. Abel and Richard Deitz, "Do the Benefits of College Still Outweigh the Costs?" Federal Reserve Bank of New York, Vol. 20, No. 3, 2014

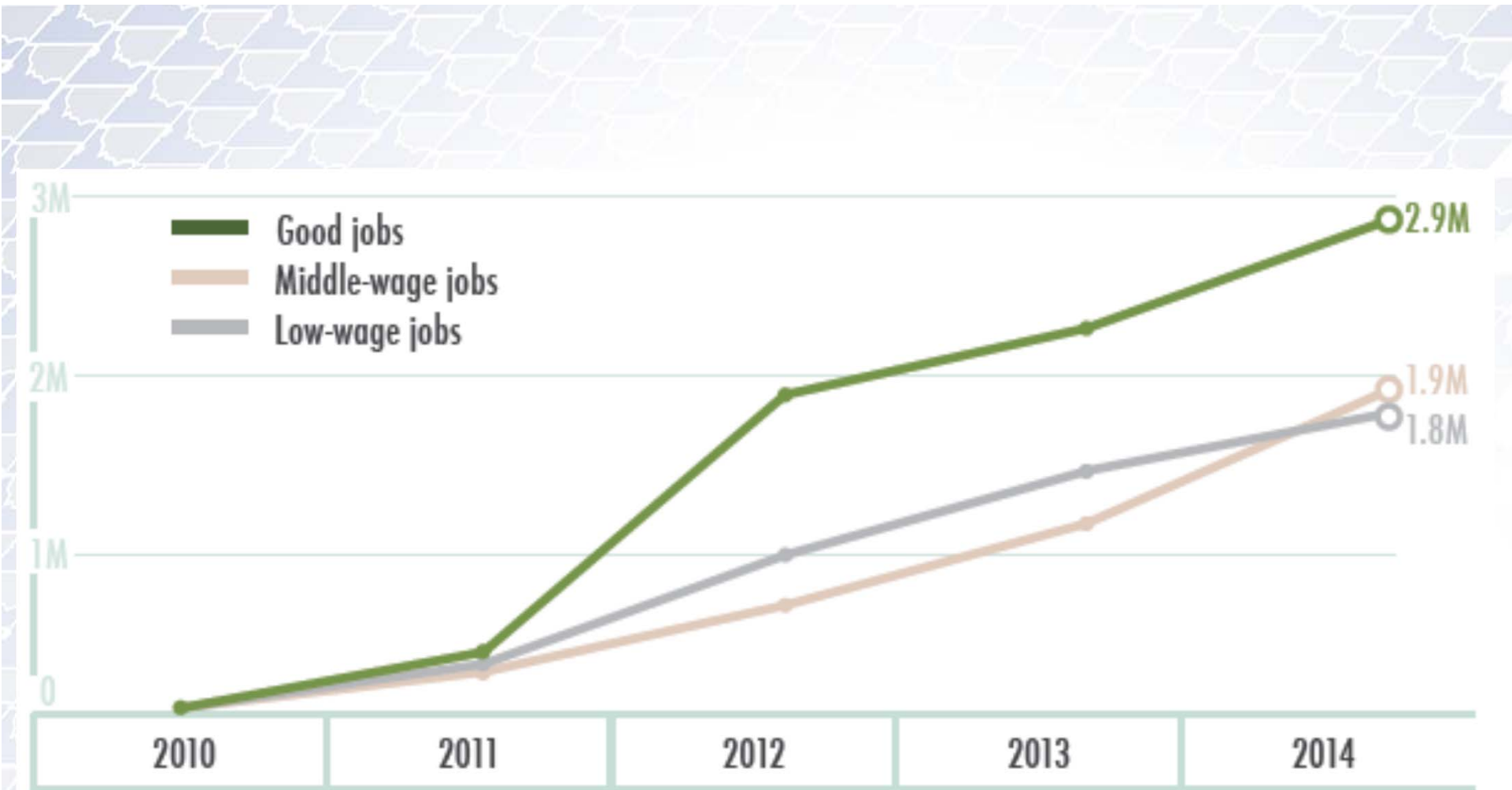


Economic Recovery: College graduates are first in line

“Of the 6.6 million jobs added during the recovery, **2.9** million were good jobs.”

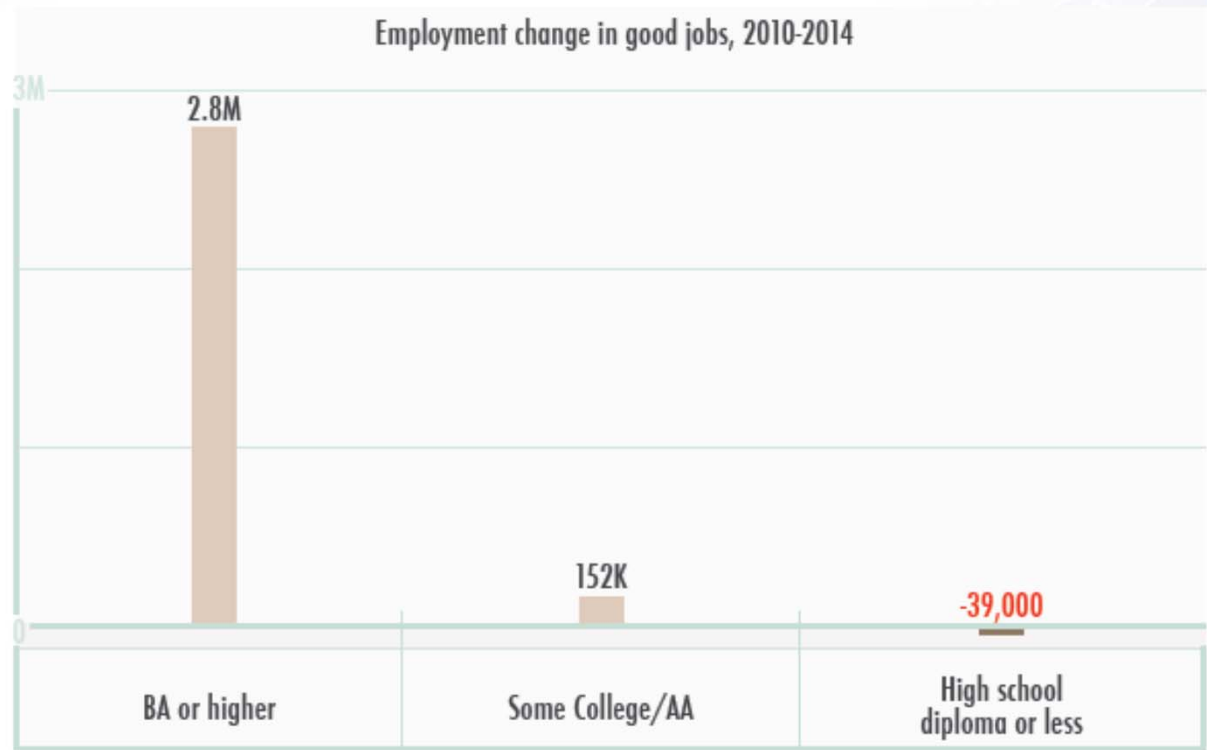


Source: Georgetown University Center on Education and the Workforce



Source: Georgetown University Center on Education and the Workforce

“97% of good jobs added in the recovery went to college graduates”



Source: Georgetown University Center on Education and the Workforce

Employment change during recovery , 2010-2014



Source: Georgetown University Center on Education and the Workforce

Education is ...

- ❖ ... an economic imperative
- ❖ ... a public good
- ❖ ... the great equalizer



