

Idaho State Historical Museum



2205 Old Penitentiary Road – Boise, Idaho 83712
(208) 334-2682 – www.history.idaho.gov

Table Contents

Museum Renovation and Addition	1-2	Arid South floor plan	22
Visitor Experience	3	Perspective plan entering Arid South	23
Lobby leading into the Origins Exhibition	4	- Oregon Trail	24
Origins floor plan	5	- Nuclear Exhibit	25
- Origins aerial view	6	- Growth of Boise	26
- Origins exhibit	7	Treasures of Idaho floor plan	27
- Origins exhibit	8	Perspective plan entering Treasures of Idaho	28
Three Faces of Idaho floor plan	9	Lower level floor plan	29
Perspective plan entering Three Faces	10	Creative Play exhibition area	30
Northern Reach floor plan	11	Creative Play perspective plan	31
- Kootenai and Gold & Silver mining	12	- Boom Town store	32
- Big Burn	13	- Deep Underground	33
- Mining	14	- Penny Arcade	34
- Forest	15	History Lab floor plan	35
Mountainous Middle floor plan	16	Perspective History Lab	36
Perspective plan entering Mountainous Middle	17	- Design a new old house	37
- Wilderness	18	- Learn the good old ways	38
- Lonesome Larry	19	What's Your Story floor plan	39
- Recreation in Idaho	20	What's Your Story perspective plan	40
- Wilderness	21	- Joe Albertson and Paul Revere Dick	41
		- Frank Robinson and Elvina Moulton	42
		- Morley Nelson	43

Idaho State Historical Museum Renovation and Addition

History is essential to understanding America. Lessons from the past enhance historical literacy, create an informed citizenry, deepen our connections to our communities, and provide understanding of the people and circumstances that paved the way to today. History teaches us about triumphs and mistakes, inspiring us with stories of humanity and perseverance in the face of challenges. History compels us to think beyond our assumptions and find truth.



The Idaho Historical Museum serves the entire population of the state as well as thousands of visitors to Idaho. Every year, 40,000 visitors experience the museum's programs and exhibitions, giving the institution a vital role in Idaho culture: teaching the past in order to inspire, enrich, and engage current and future generations.

To foster a more meaningful exploration of our history, the Idaho State Historical Society is renovating and expanding the Idaho State Historical Museum and developing world-class exhibitions that inspire learning and invite an engaged discussion of Idaho's past and its impact today.

Project goals

- To repair and replace aging infrastructure that dates to the museum's opening in 1950 in order to enhance the building's functionality and environmental controls;
- To expand the museum to accommodate the public demand for programs and expand the capacity to feature special traveling exhibitions;
- To realize a level of excellence with core exhibitions that are inspiring and informative, appeal to Idahoans' sense of pride in the state, serve an essential role for children, families, and school tours, and position the Idaho Historical Museum as a top destination.

Exhibit development guiding principles

- People and the land shape each other.
- History is made by people. People make decisions that have consequences. Everyone is a history-maker.
- Historical decisions made in the past are relevant to contemporary life; our decisions will impact the future.
- Idaho is not an island. Idaho's story has a regional and national context.

Exhibit summaries

Origins Directly off the lobby is an exhibit that will introduce many aspects of our state. Visitors will learn about Idaho's five federally recognized Native American tribes, see artifacts, and be able to hear tribal origin stories. An interactive touchscreen map will show Idaho's many natural and historical attractions. Another interactive map will explain geological forces that shaped Idaho's terrain. The heart of the exhibit is a virtual stream that demonstrates the importance of water in our state. A large projection screen behind the stream will feature a dramatic show of Idaho's varied natural scenery. Throughout a stylized Idaho landscape, visitors will learn about the state's widely diverse ecosystems through interactives that engage all the senses. Finally, a lively media presentation tells the story of how Idaho got its unusual shape.

Three Faces of Idaho The museum's main survey of Idaho history examines the different ways people in Idaho's three main geographic regions—the forested north, mountainous middle, and arid south—have responded to the challenges of the land. Through artifacts, images, media, and interactive experiences, visitors will be immersed in the history of Idaho's very distinct regions.

The North: Exhibits explore the themes of mining, lumbering, transportation, and refuge. A high-light is an immersive media show that puts visitors in the middle of the 1910 forest fire.

The Middle: Media programs explore recreation, the establishment of Idaho's wilderness areas, and endangered species, with a focus on the restoration of the salmon.

The South: Challenges of developing agriculture in an arid environment take center stage here, with a crops quiz show game and an interactive in which visitors turn off Shoshone Falls and watch the desert bloom.

Treasures of Idaho This gallery will serve as a showcase for Historical Society collections. Exhibits draw on three-dimensional artifacts, archival documents, and archaeological collections, both historic and prehistoric. A primary focus of this gallery will be a revolving exhibit based on the museum's sizable clothing and textile collection. The Treasures gallery will include special climate-controlled cases to ensure conservation of fragile collections while on exhibit.

Creative Play A series of immersive environments based on early professions and trades in Idaho creates the setting for young children to imagine themselves in other places and times. Props and costumes encourage parents and children to engage in pretend play. Environments include a locomotive and train station, a hard rock mine, a Victorian theater, and a construction office and building site.

History Lab Fun hands-on activities introduce visitors to historical primary sources. Visitors will use critical thinking skills while they engage with oral histories, photographs, maps, letters, and architecture in game-like settings. Each activity can be undertaken separately but the room will be transformed into a cohesive docent-led experience for school groups.

What's Your Story This exhibit will focus on the personal stories of individual Idahoans rather than on the broad sweep of historical events. Four themed areas explore stories of people diverse in ethnic background, life experiences, gender, geography, and time period in Idaho history. The themes of Home, Journey, Community, and Turning Points are universal and run through everyone's life. Opportunities will be provided for visitors to contribute their own content that then becomes part of the exhibit.

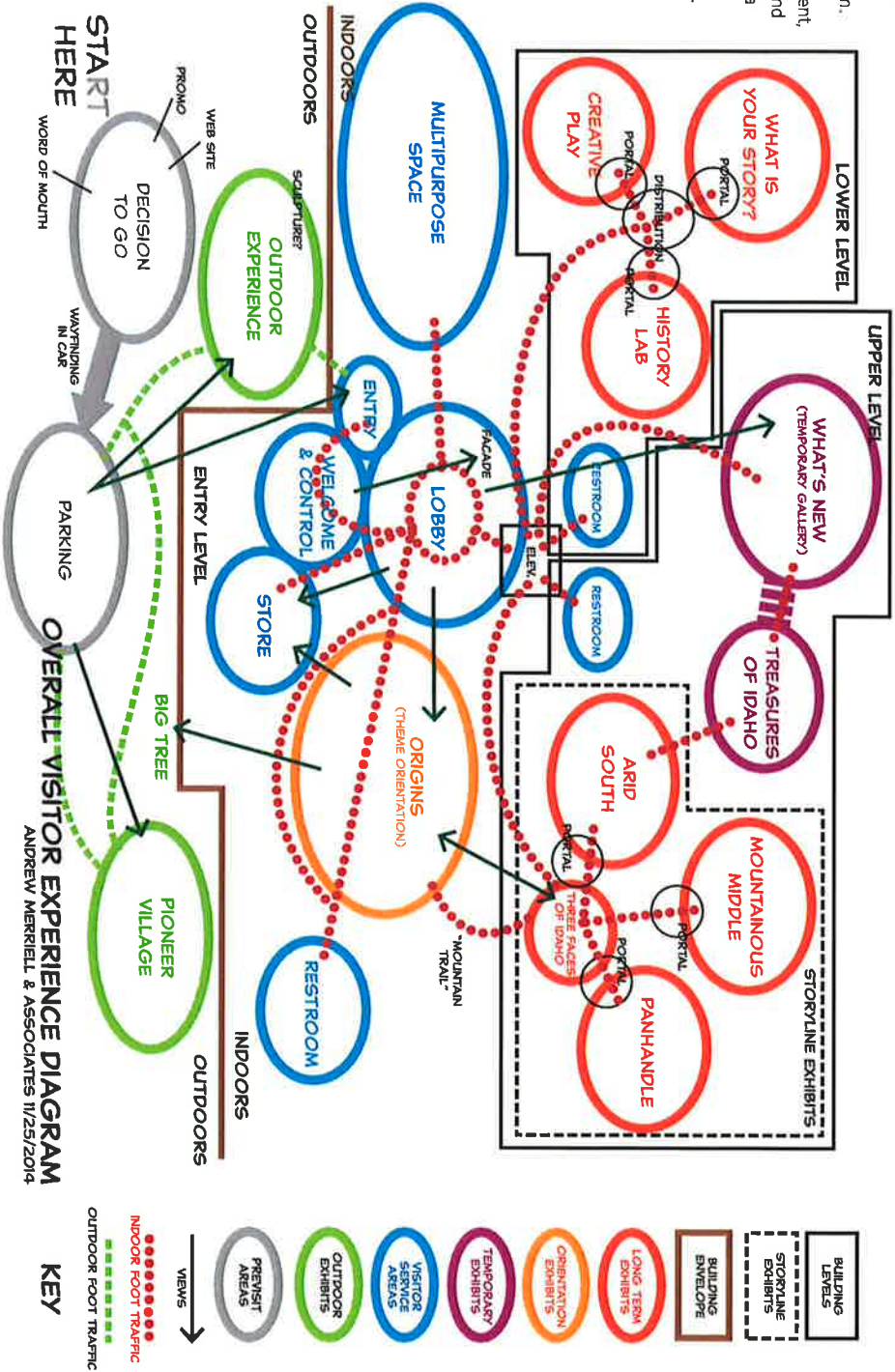
Temporary Gallery The 2,400-square-foot temporary gallery will allow the museum to present mid- to large-size national traveling exhibitions that currently cannot be shown in this part of the state.

Multipurpose Room This space, which will serve as a home for the museum's historic bar and stained-glass dome, will be used primarily for events and programs. Compact exhibits will highlight the importance of preserving history. The story and mission of the Idaho Historical Society will be told and temporary exhibits will feature the work of the Society's partner "history keepers" around the state.

Community Gallery The museum consistently receives requests from community groups for exhibit space to tell their stories. This designated area on the museum's lower level will allow room for the greater community to engage with museum visitors through their own exhibits.

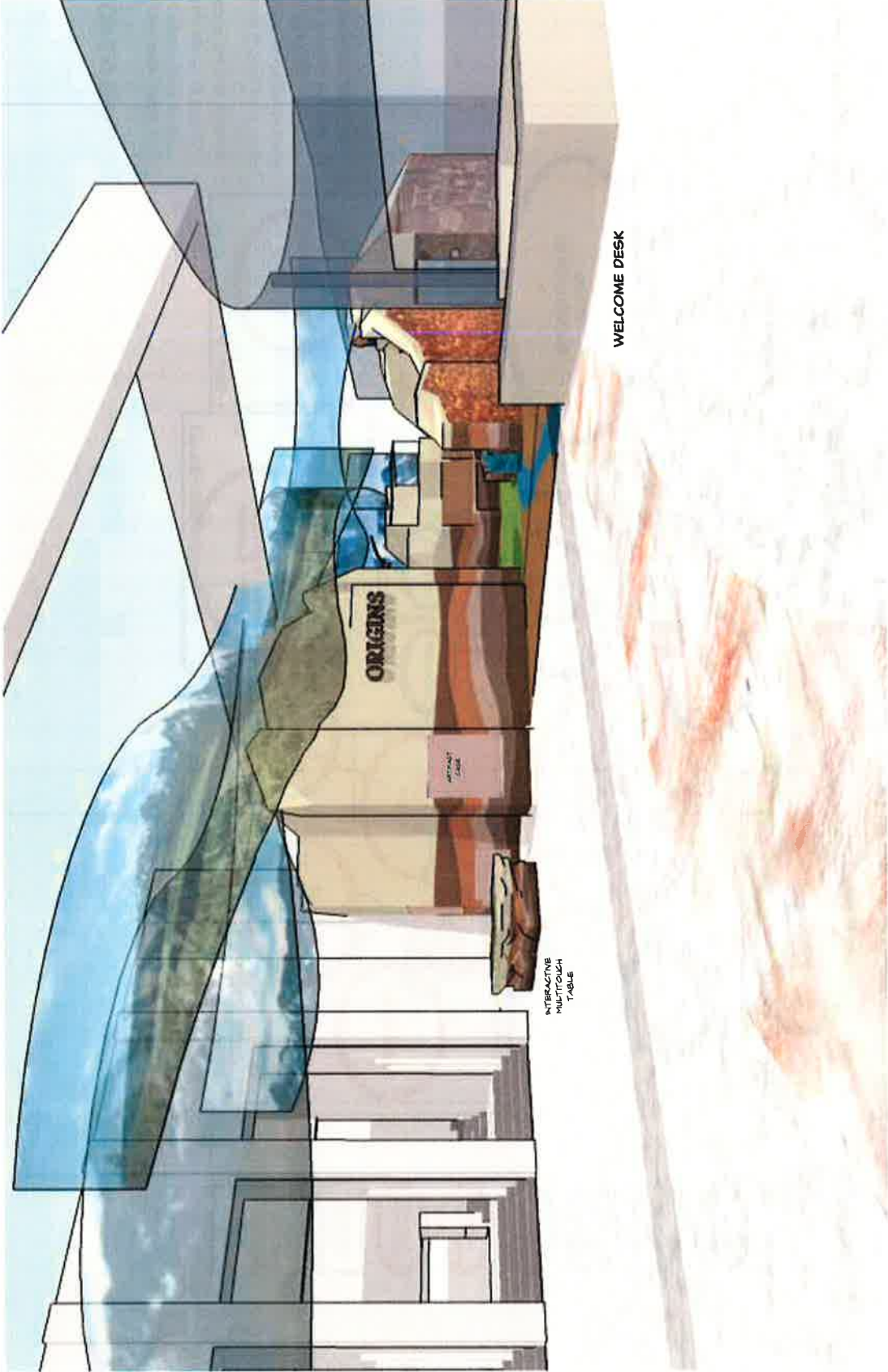
VISITOR EXPERIENCE

This diagram shows visitor flow and relationships among the various aspects of visitors' experience in the new Museum. See Volume 2, Story and Content, for details of exhibit content and activities. See Volume 4, Media Concepts, for electronic and audiovisual media suggestions.





ORIGINS EXHIBITION
LOBBY AND
EXHIBIT ENTRY





ORIGINS EXHIBITION
SECTION PLAN



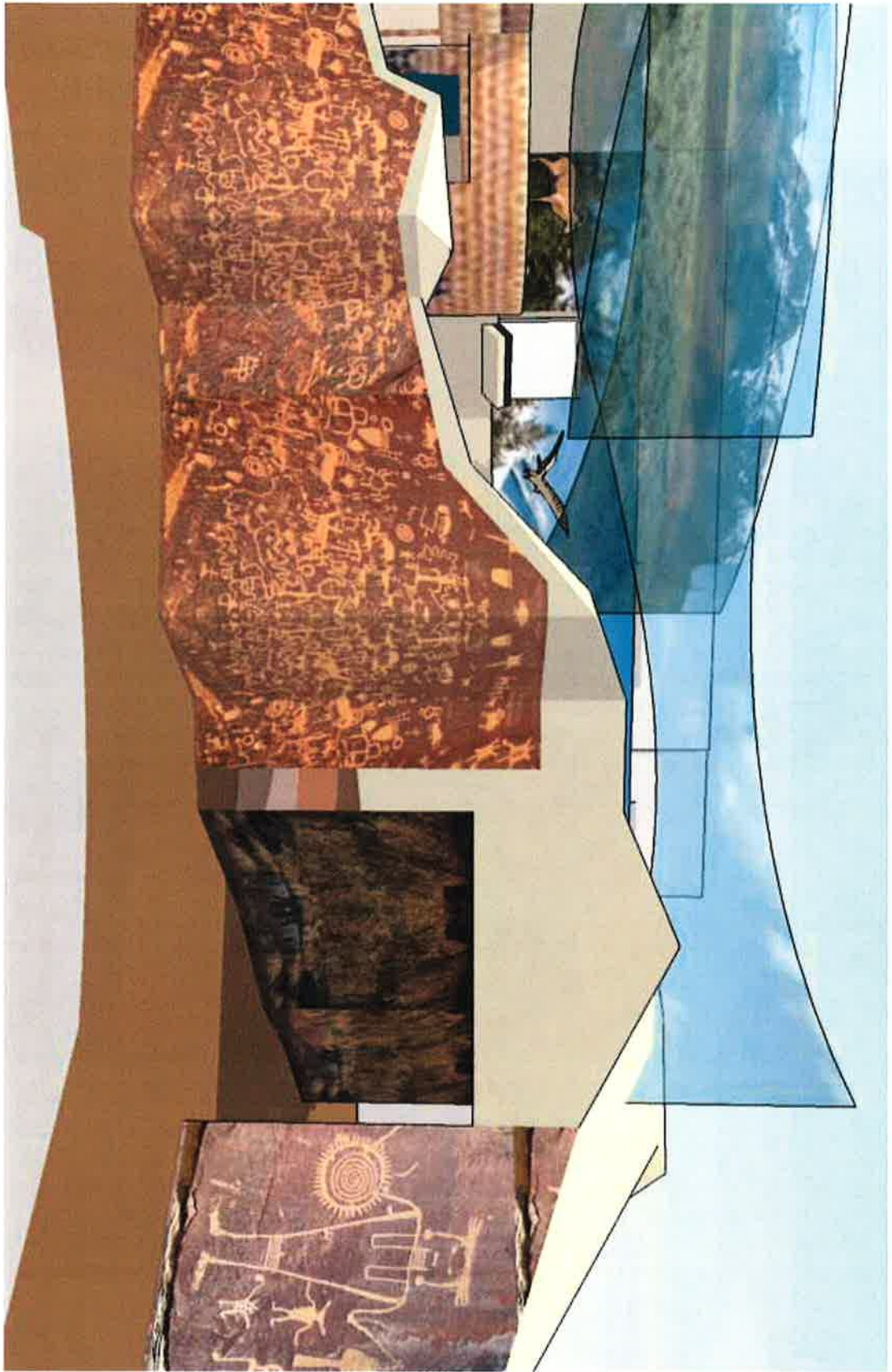
DATE: NOVEMBER 12, 2015
REV: NOVEMBER 12, 2015





ORIGINS EXHIBITION
EXHIBITION
OVERVIEW





ORIGINS EXHIBITION

PETROGLYPH
CORRIDOR

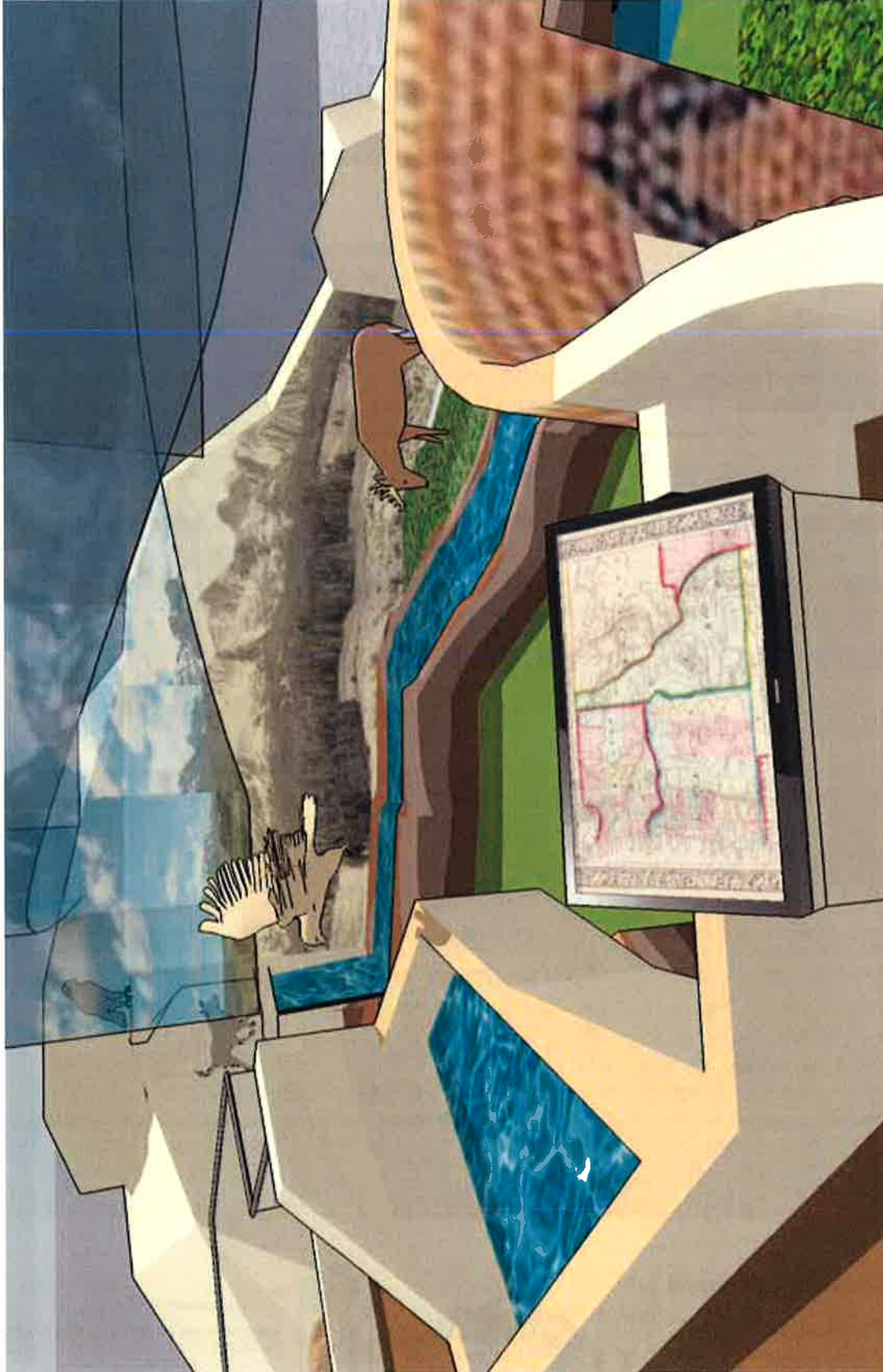


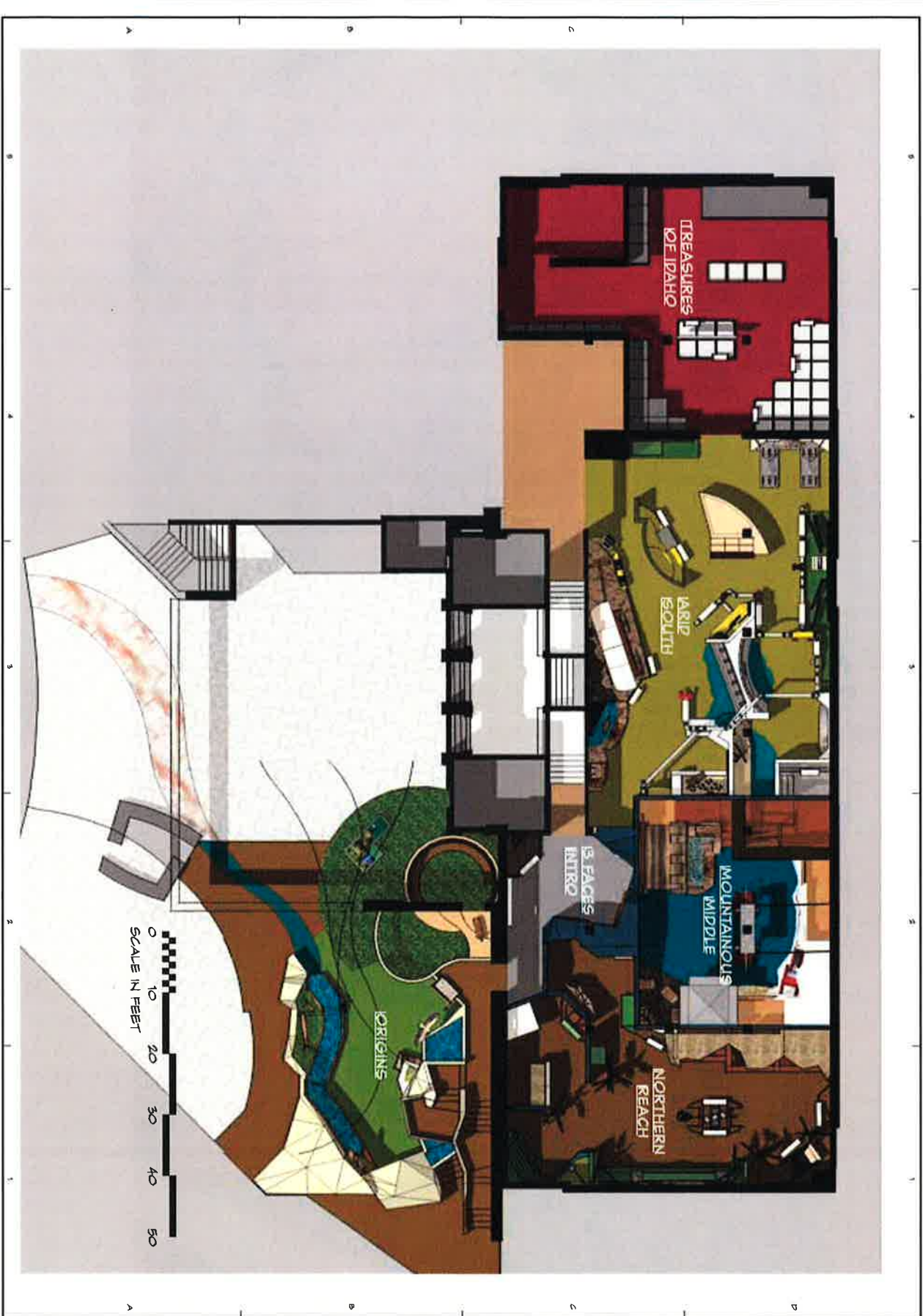
DATE: NOVEMBER 12, 2015
REV: NOVEMBER 12, 2015





ORIGINS EXHIBITION
UPPER LEVEL



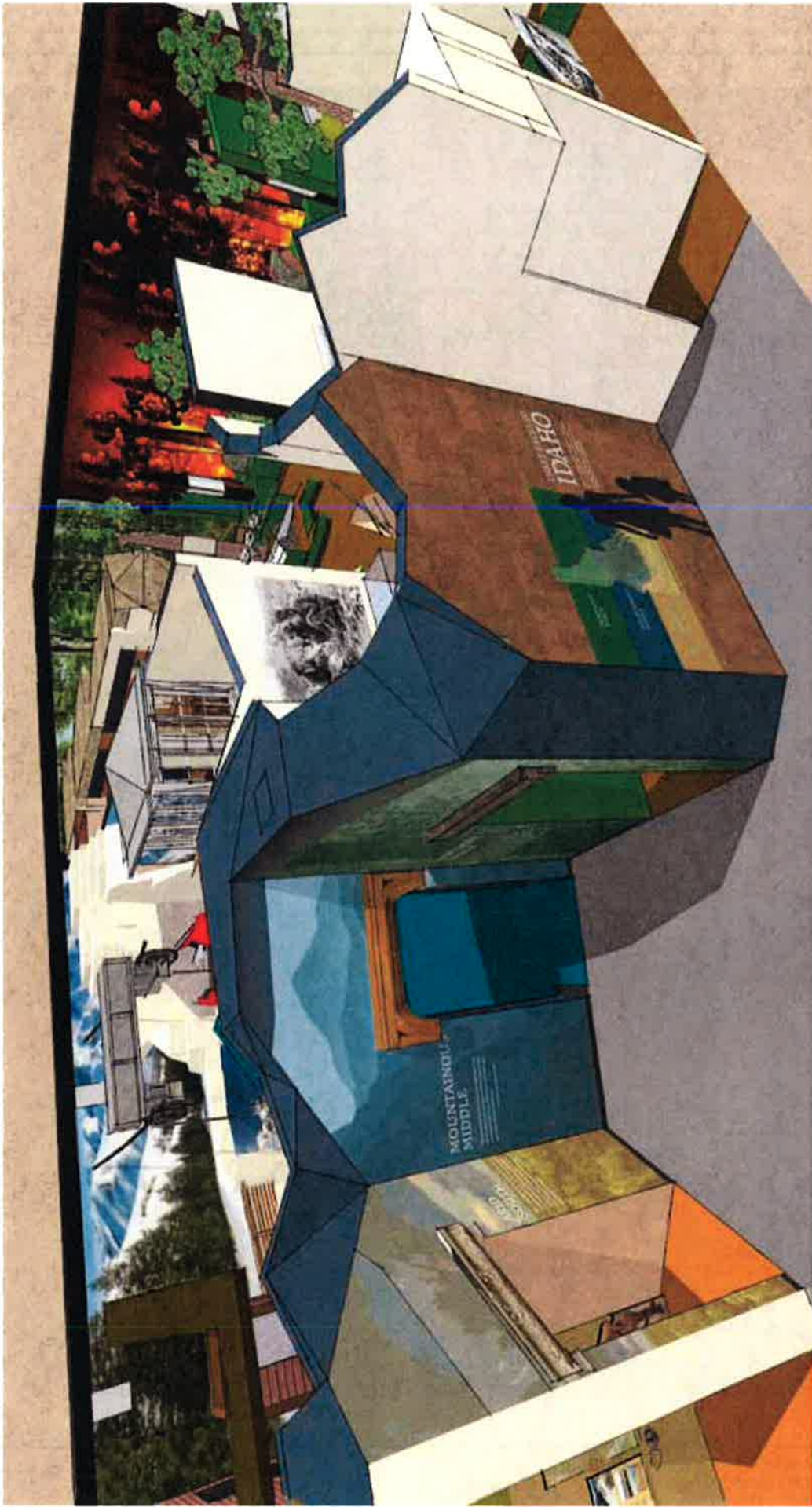


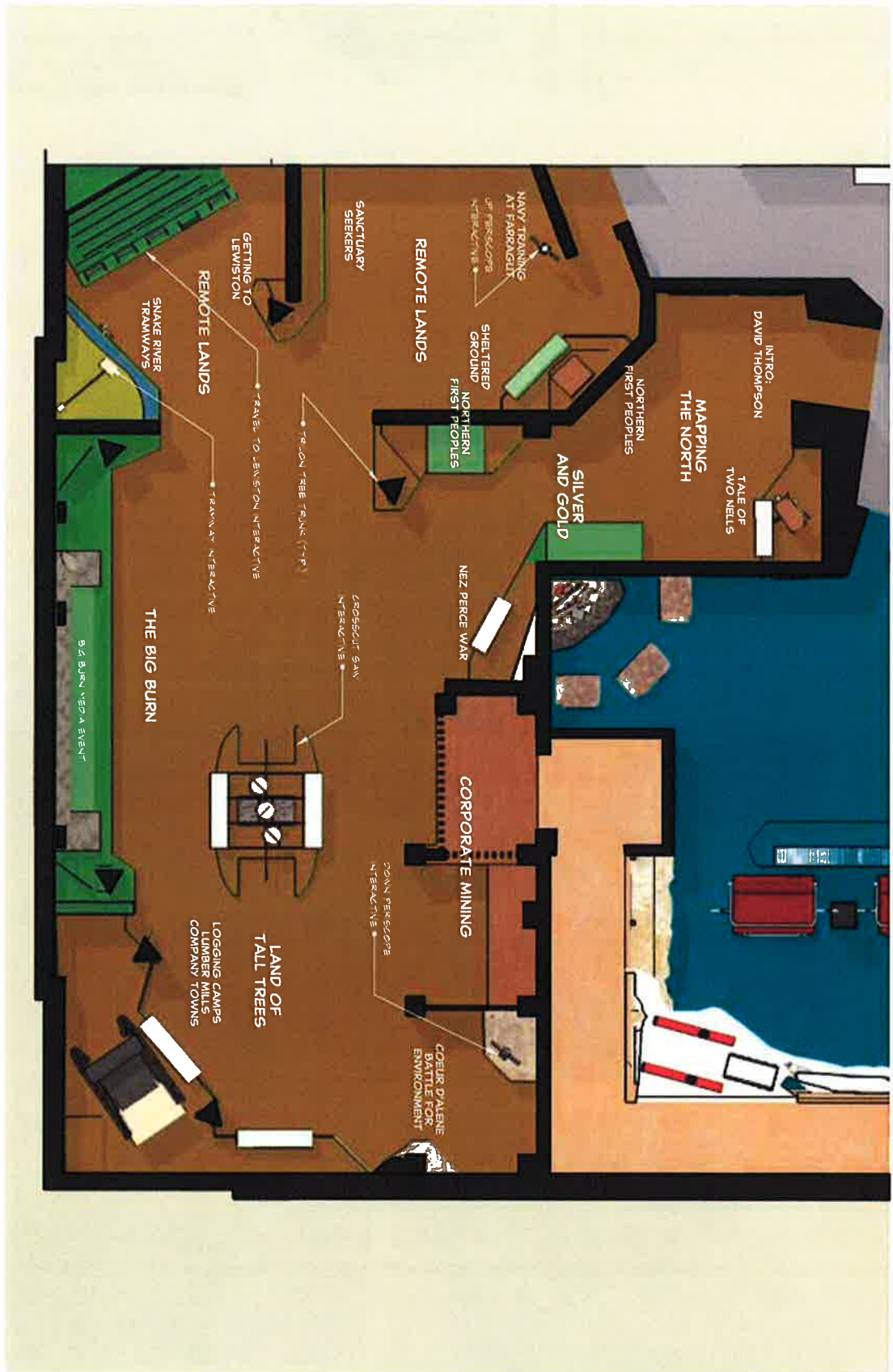
SCHEMATIC DESIGN PHASE
OVERALL EXHIBITION PLAN
 scale: 1" = 15'-0"



DATE	4/24/2015
BY	

ANDREW MERRIELL ASSOCIATES
 INTERDISCIPLINARY PLANNING AND DESIGN
 1192 OLD SANTA FE TRAIL
 SANTA FE, NM 87505-4562
 505.762.8550





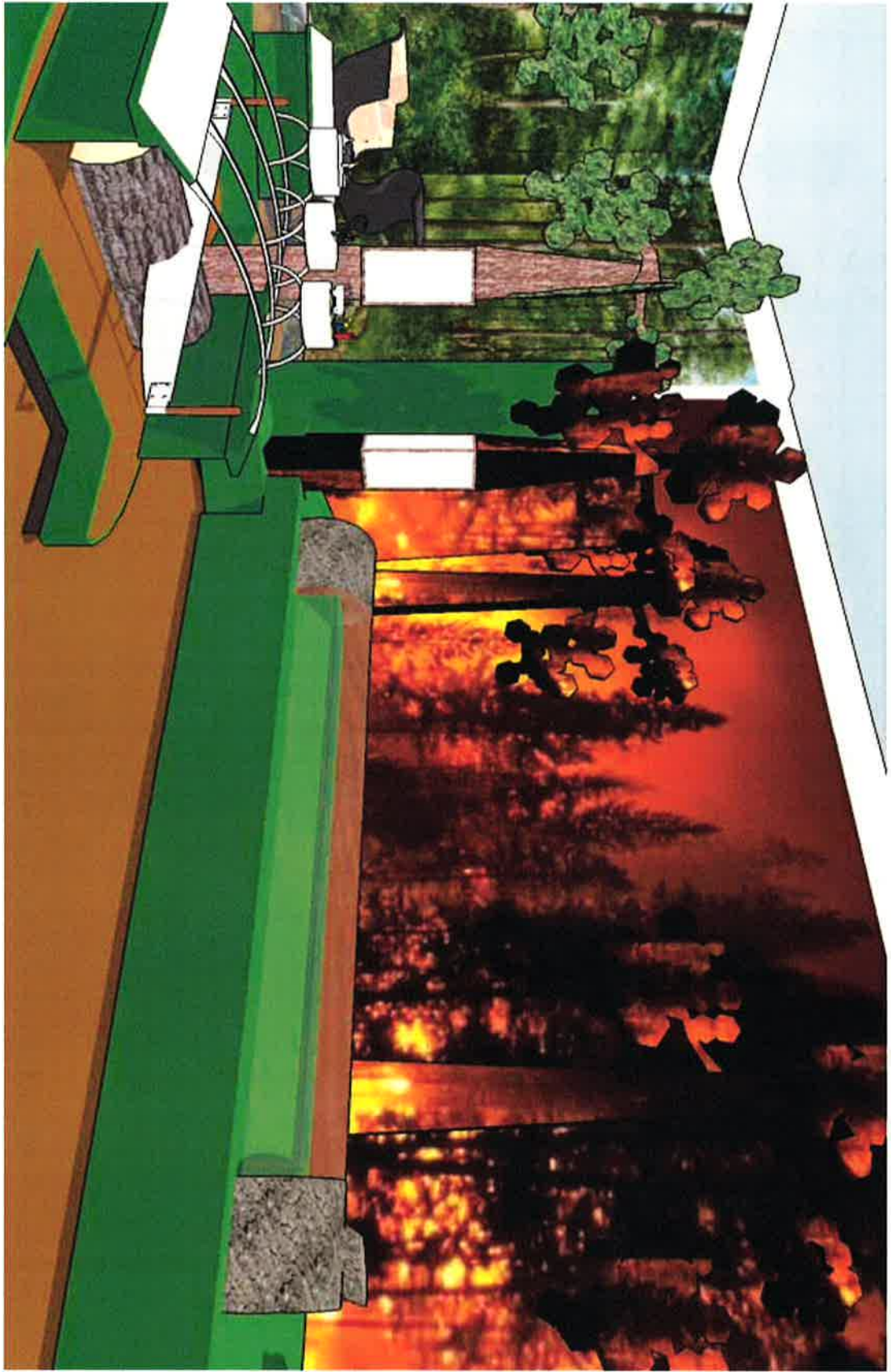
UPPER LEVEL EAST EXHIBITS
 NORTHERN REACH
 FLOOR PLAN



DATE: NOVEMBER 13, 2015
 REV: NOVEMBER 15, 2015







UPPER LEVEL EAST EXHIBITS
 NORTHERN REACH
 EXHIBIT VIEWS



DATE: NOVEMBER 13, 2015
 REV: NOVEMBER 15, 2015





ANDREW MERRILL ASSOCIATES
INTERIORS PLANNING AND DESIGN

DATE: NOVEMBER 13, 2015

REV: NOVEMBER 15, 2015



UPPER LEVEL EAST EXHIBITS
NORTHERN REACH
EXHIBIT VIEWS



A :: VIEW OF TALL TREES LUMBERING EXHIBIT
A14 NO SCALE

ANDREW MERRIELL ASSOCIATES
 INTERPRETIVE PLANNING AND DESIGN

DATE: NOVEMBER 13, 2015
 REV: NOVEMBER 15, 2015



UPPER LEVEL EAST EXHIBITS
 NORTHERN REACH
 EXHIBIT VIEWS

DWG. NO.:

ULE14
 Page 15



UPPER LEVEL EAST EXHIBITS
MOUNTAINOUS MIDDLE
FLOOR PLAN





UPPER LEVEL EAST EXHIBITS
MOUNTAINOUS MIDDLE
EXHIBIT VIEWS

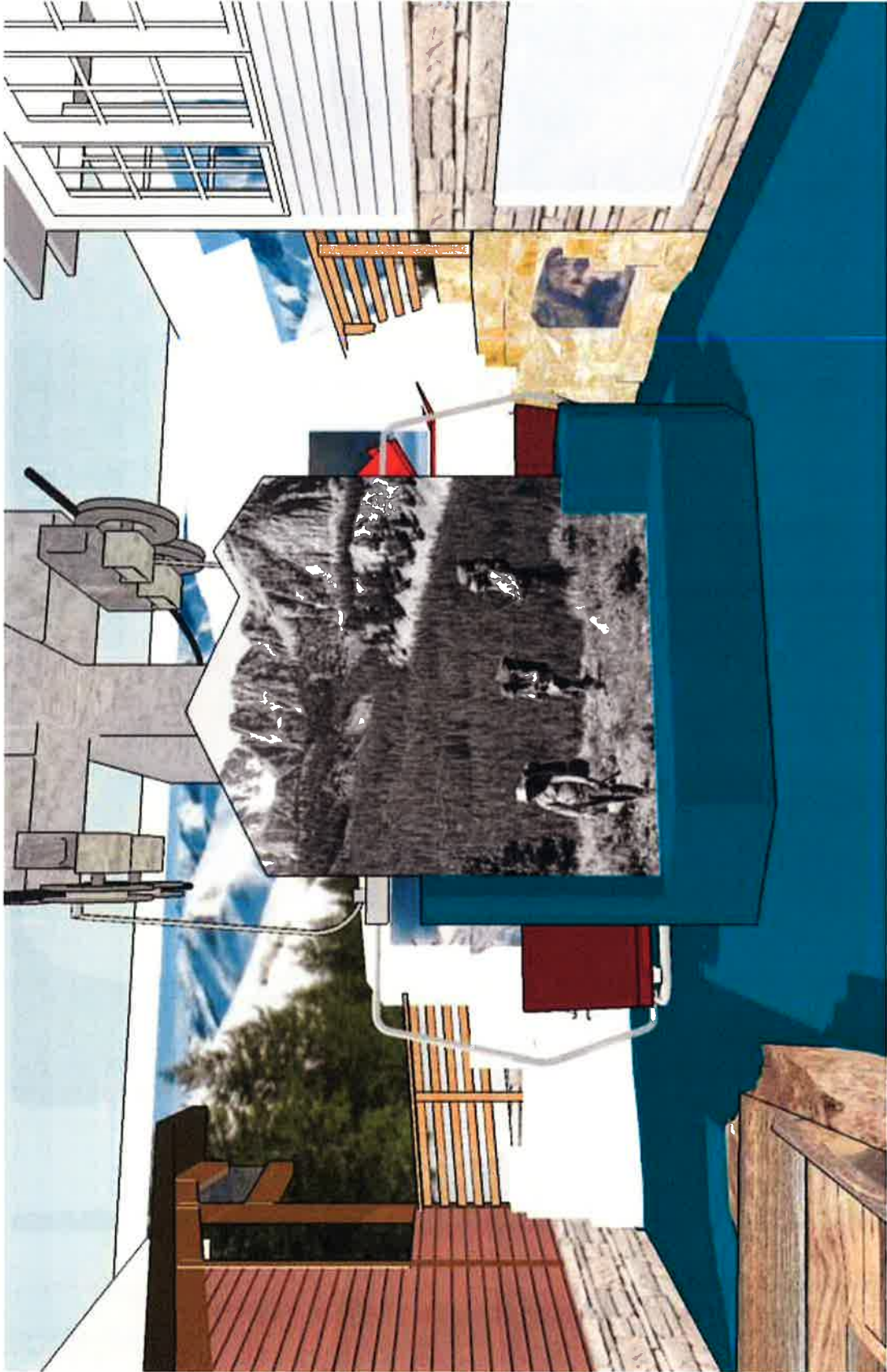


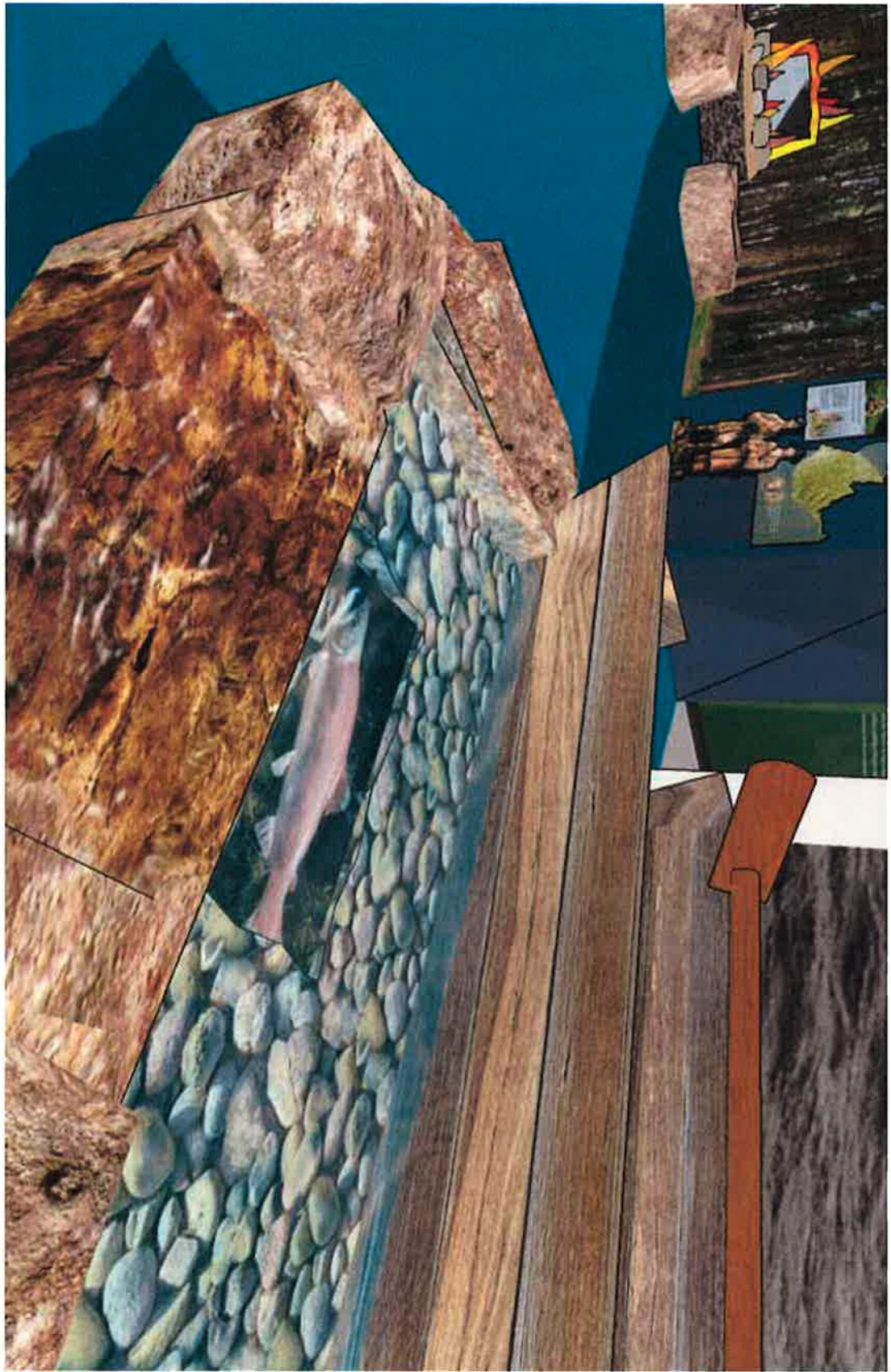
DATE: NOVEMBER 13, 2015
REV: NOVEMBER 15, 2015





UPPER LEVEL EAST EXHIBITS
MOUNTAINOUS MIDDLE
EXHIBIT VIEWS



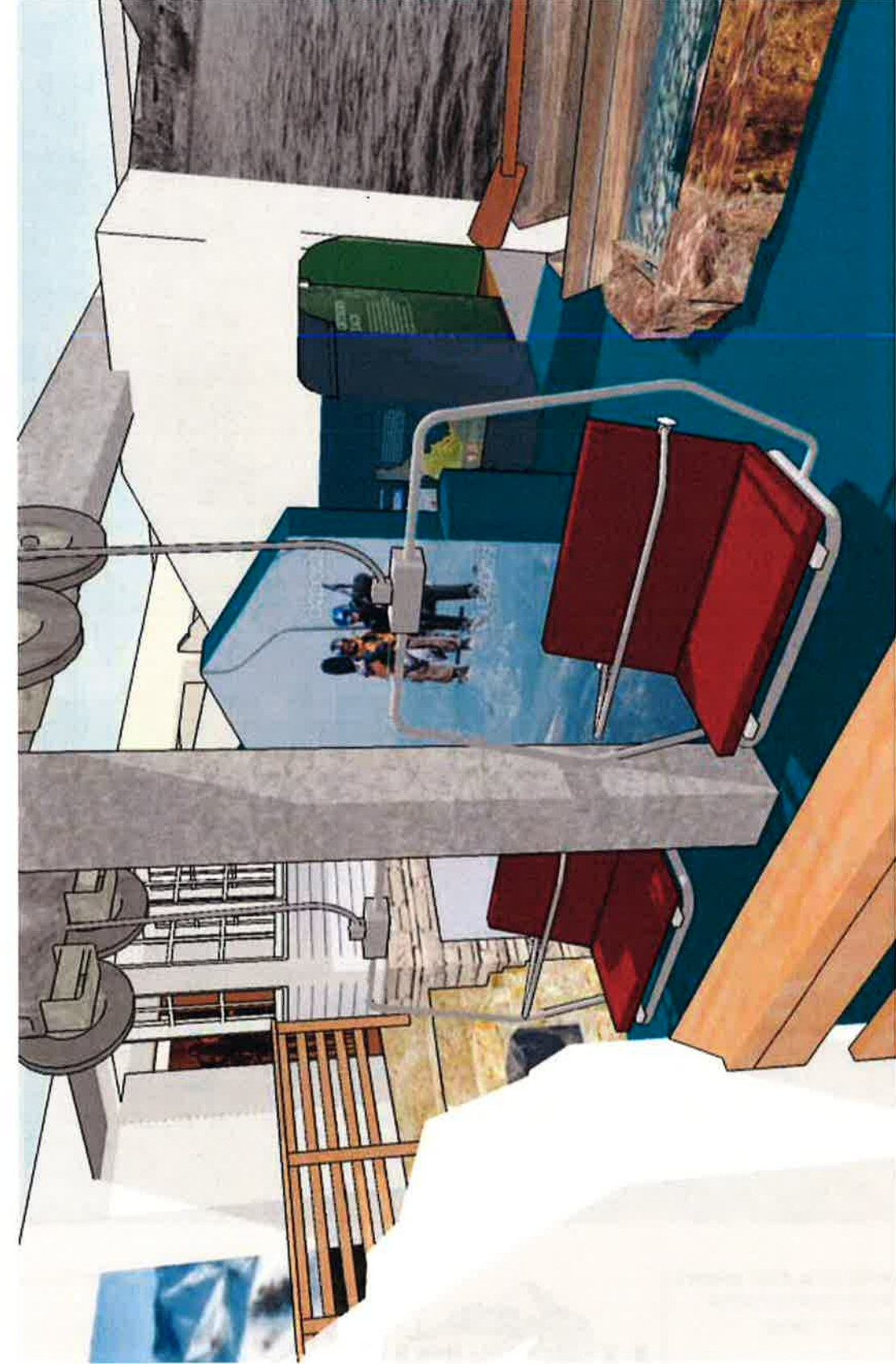


UPPER LEVEL EAST EXHIBITS
 MOUNTAINOUS MIDDLE
 EXHIBIT VIEWS



DATE: NOVEMBER 13, 2015
 REV: NOVEMBER 15, 2015

ANDREW MERRIELL & ASSOCIATES
 INTERPRETIVE PLANNING AND DESIGN



UPPER LEVEL EAST EXHIBITS
MOUNTAINOUS MIDDLE
EXHIBIT VIEWS



DATE: NOVEMBER 13, 2015

REV: NOVEMBER 15, 2015

ANDREW MERRILL ASSOCIATES
INTERPRETIVE PLANNING AND DESIGN

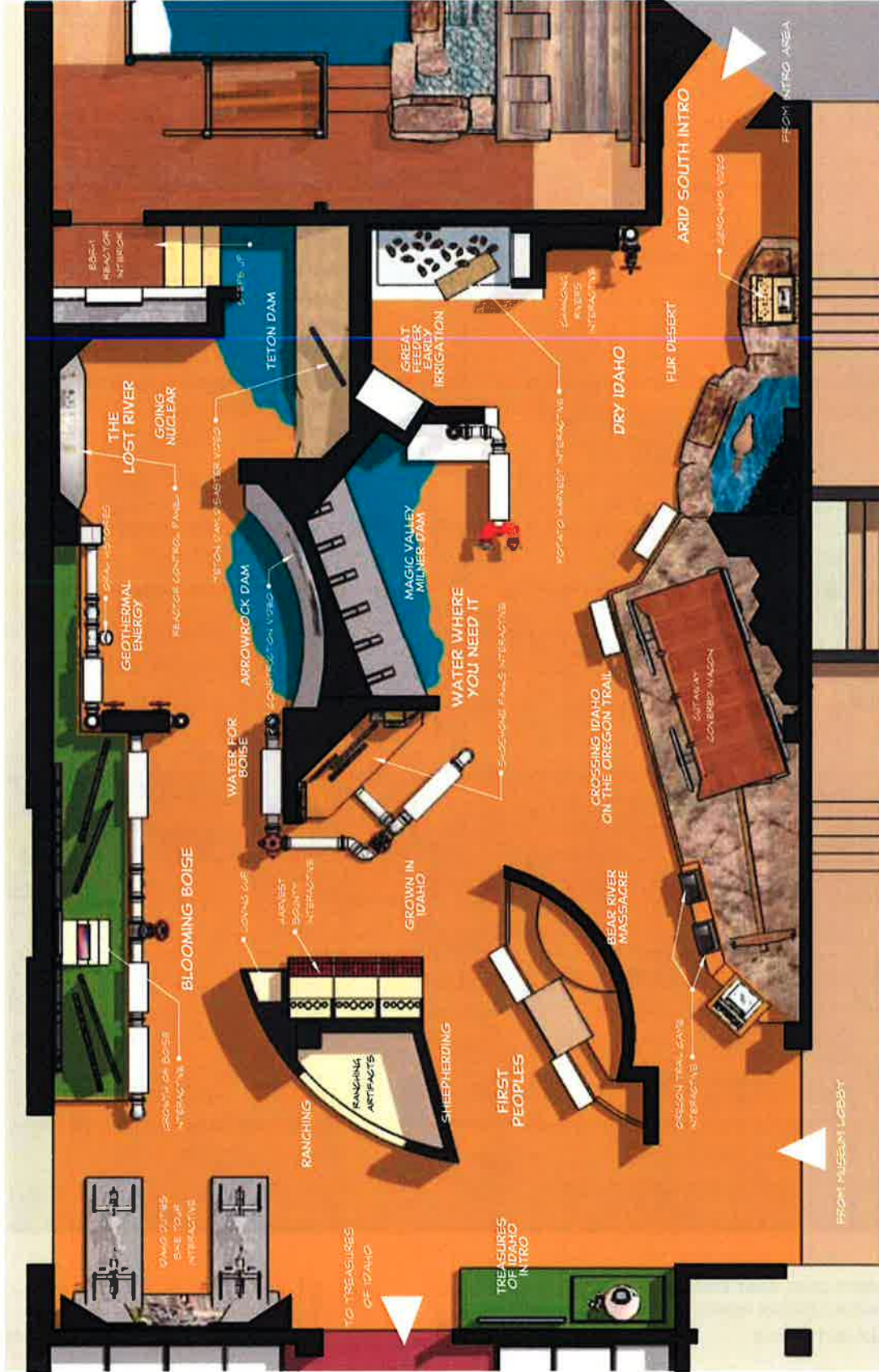


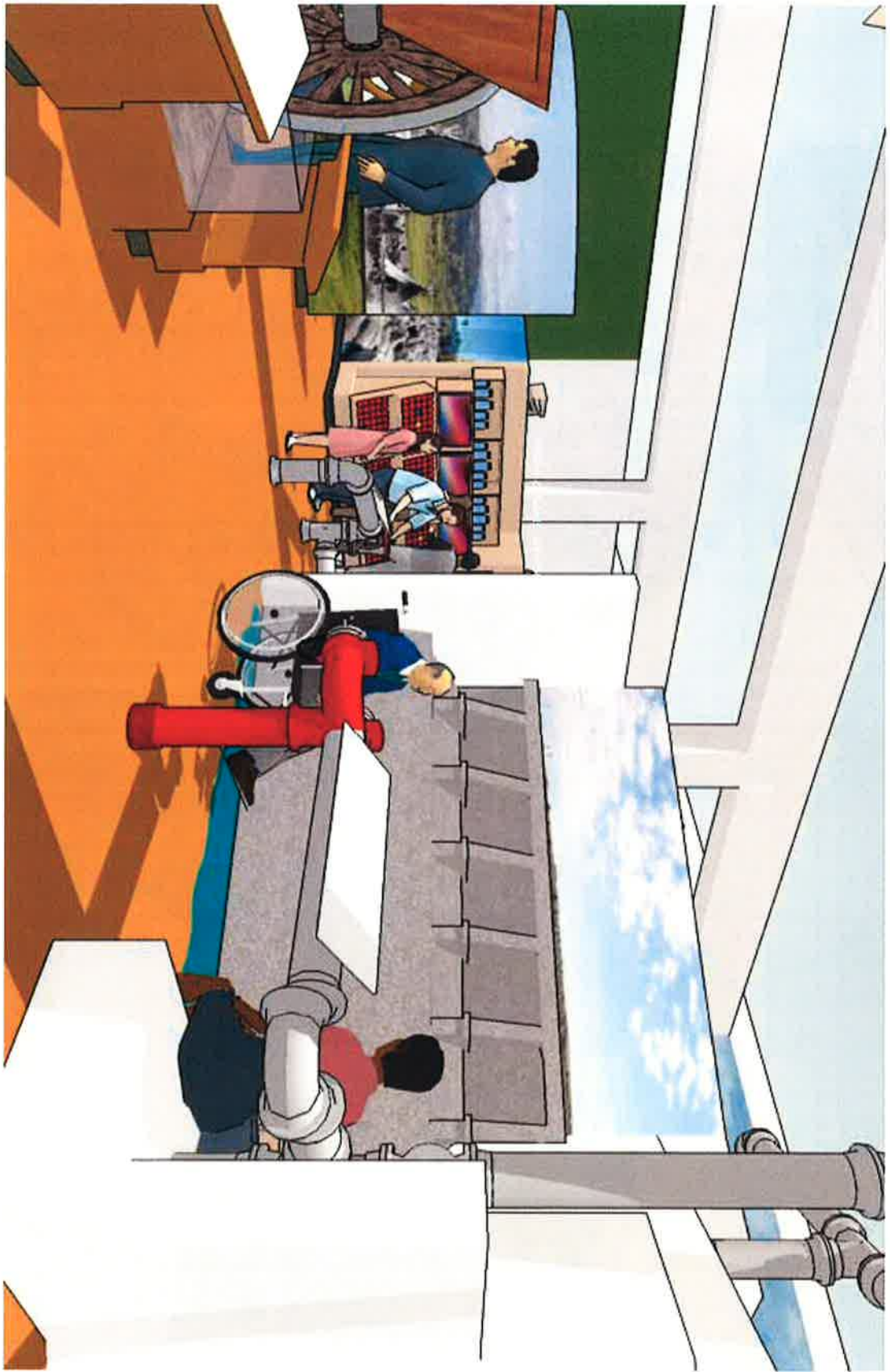
UPPER LEVEL EAST EXHIBITS
MOUNTAINOUS MIDDLE
EXHIBIT VIEWS



DATE: NOVEMBER 13, 2015
REV: NOVEMBER 15, 2015

ANDREW MERRIELL & ASSOCIATES
INTERPRETIVE PLANNING AND DESIGN



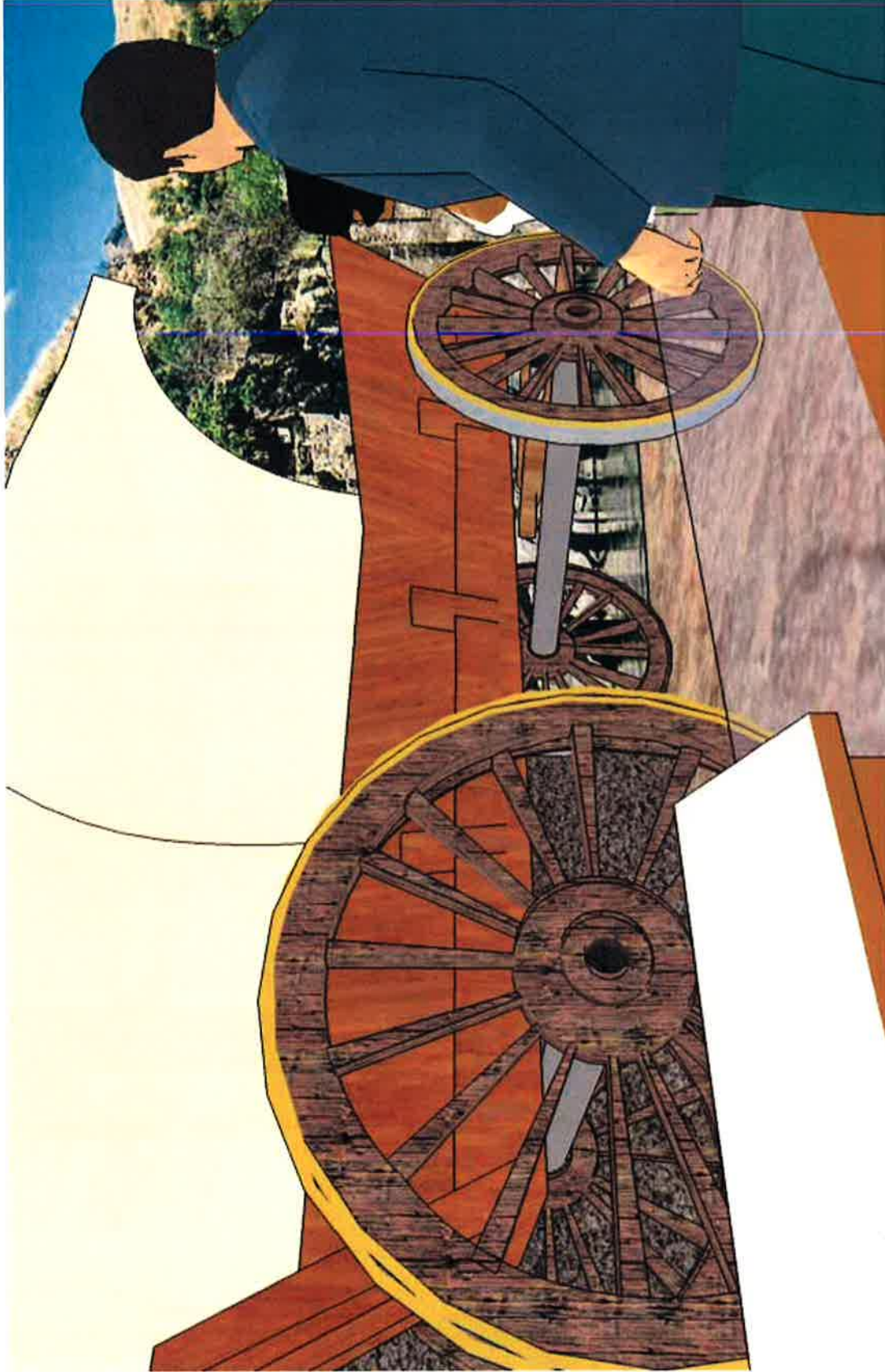


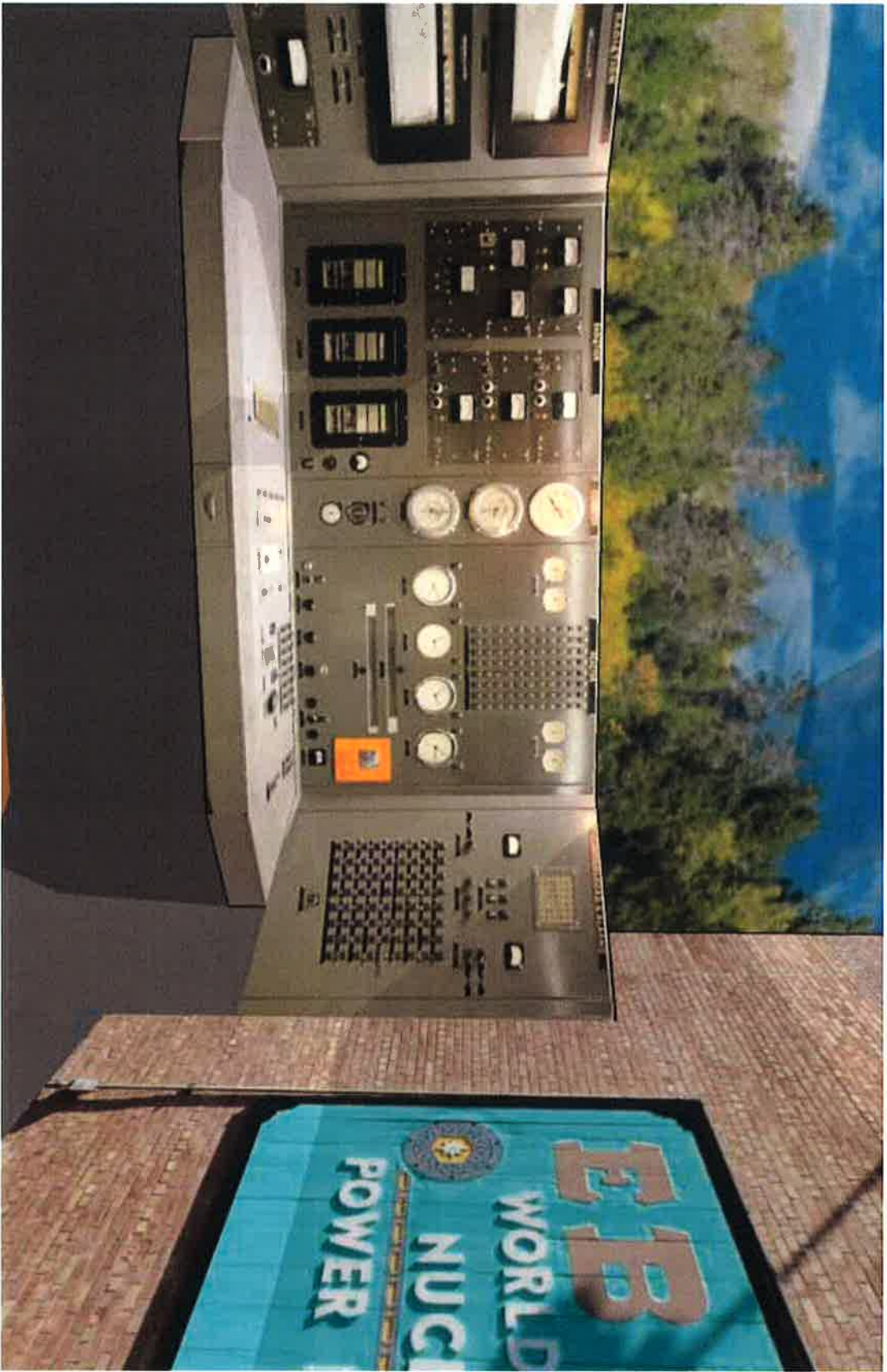
UPPER LEVEL WEST EXHIBITS
 ARID SOUTH
 EXHIBIT VIEWS



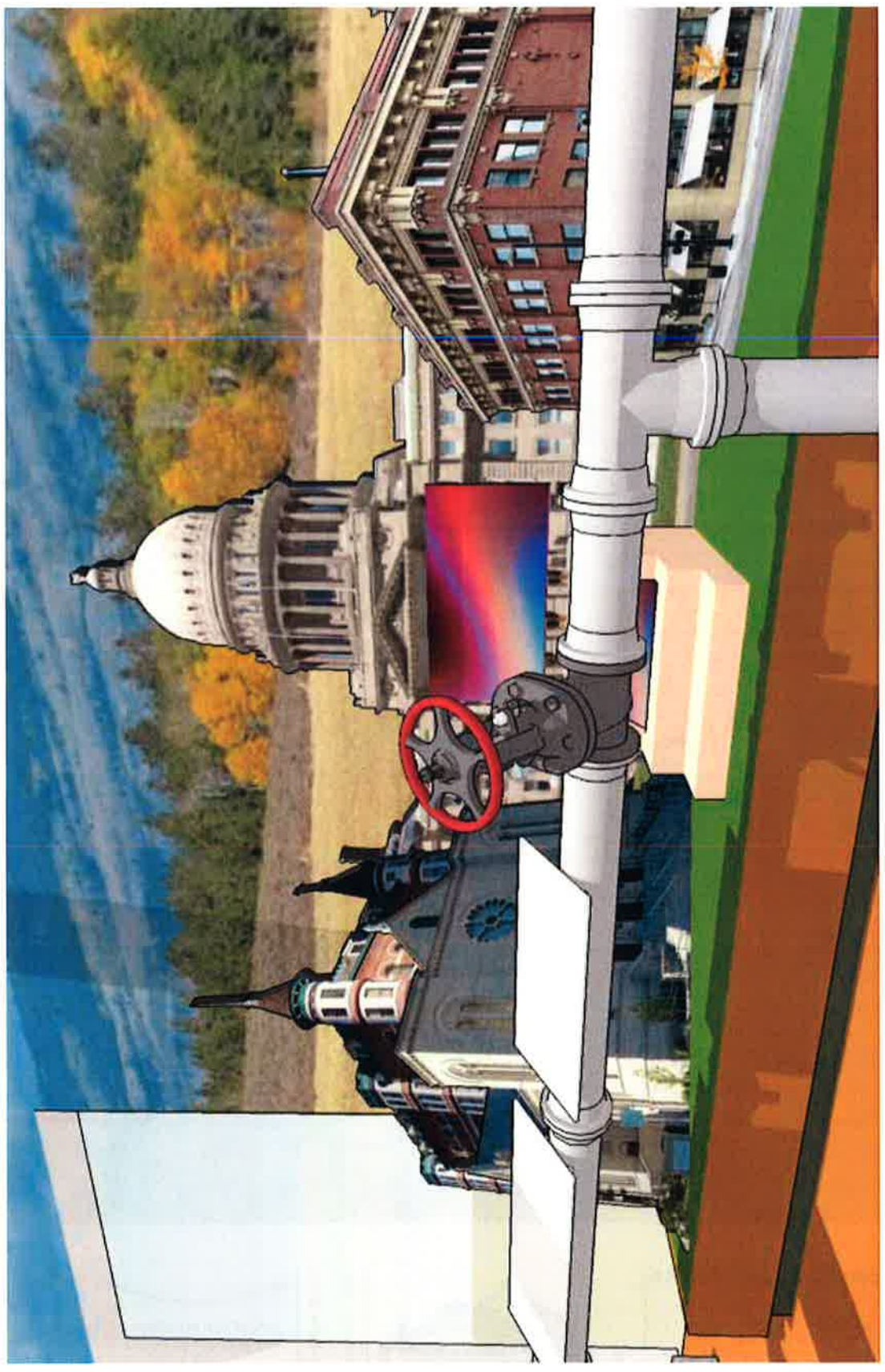
DATE: NOVEMBER 13, 2015
 REV: NOVEMBER 14, 2015



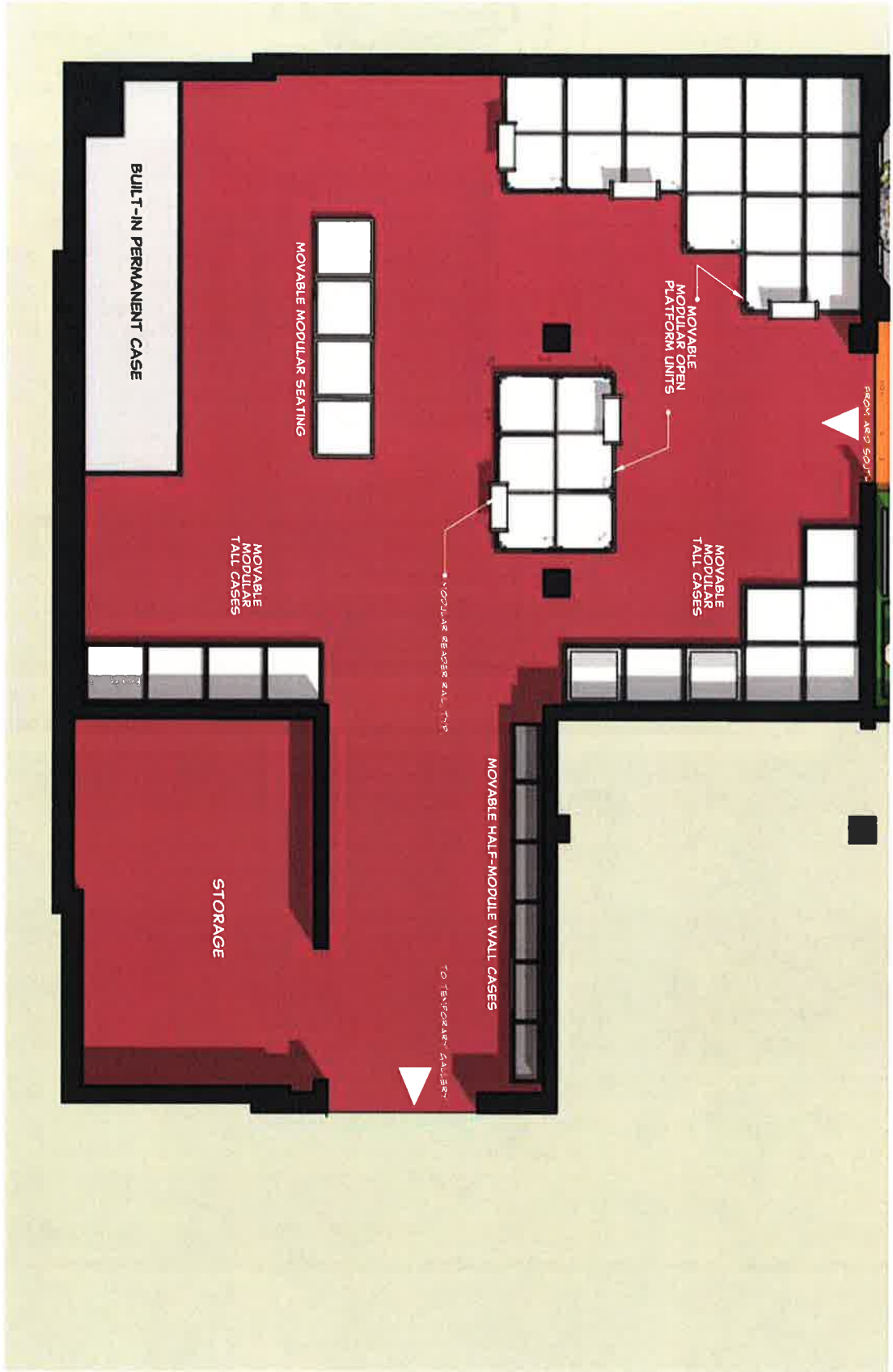




A :: VIEW OF IDAHO GOES NUCLEAR EXHIBIT
NO SCALE



MOUNTAINOUS MIDDLE FLOOR PLAN



ULW24
Page 27

UPPER LEVEL WEST EXHIBITS
TREASURES OF IDAHO
FLOOR PLAN
DWG. NO.:



DATE: NOVEMBER 13, 2015
REV: NOVEMBER 14, 2015

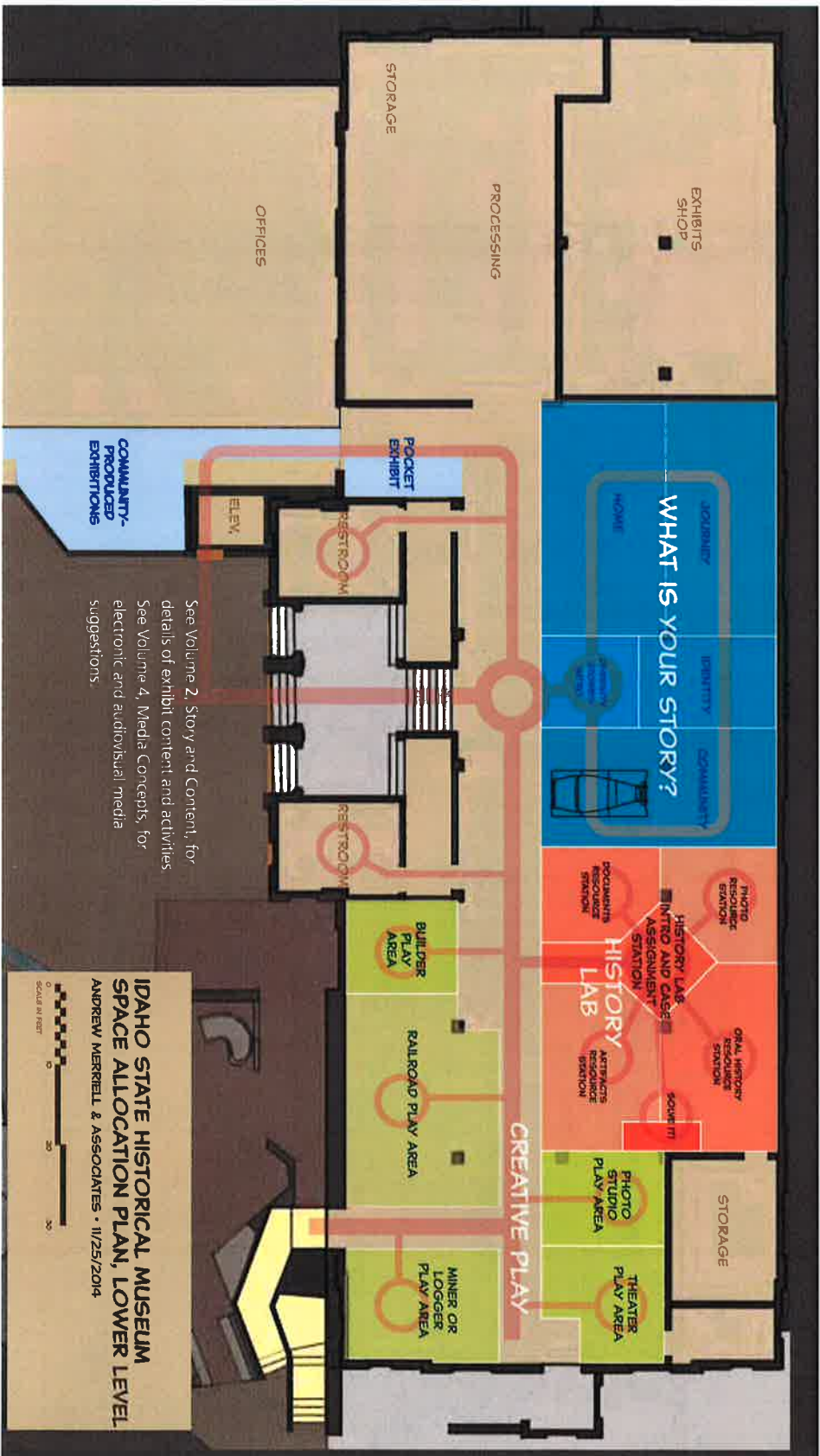




A :: VIEW OF TREASURES OF IDAHO INTRO EXHIBIT

ASAP NO SCALE

SPACE ALLOCATION AND VISITOR FLOW, LOWER LEVEL OF ORIGINAL BUILDING



See Volume 2, Story and Content, for details of exhibit content and activities. See Volume 4, Media Concepts, for electronic and audiovisual media suggestions.

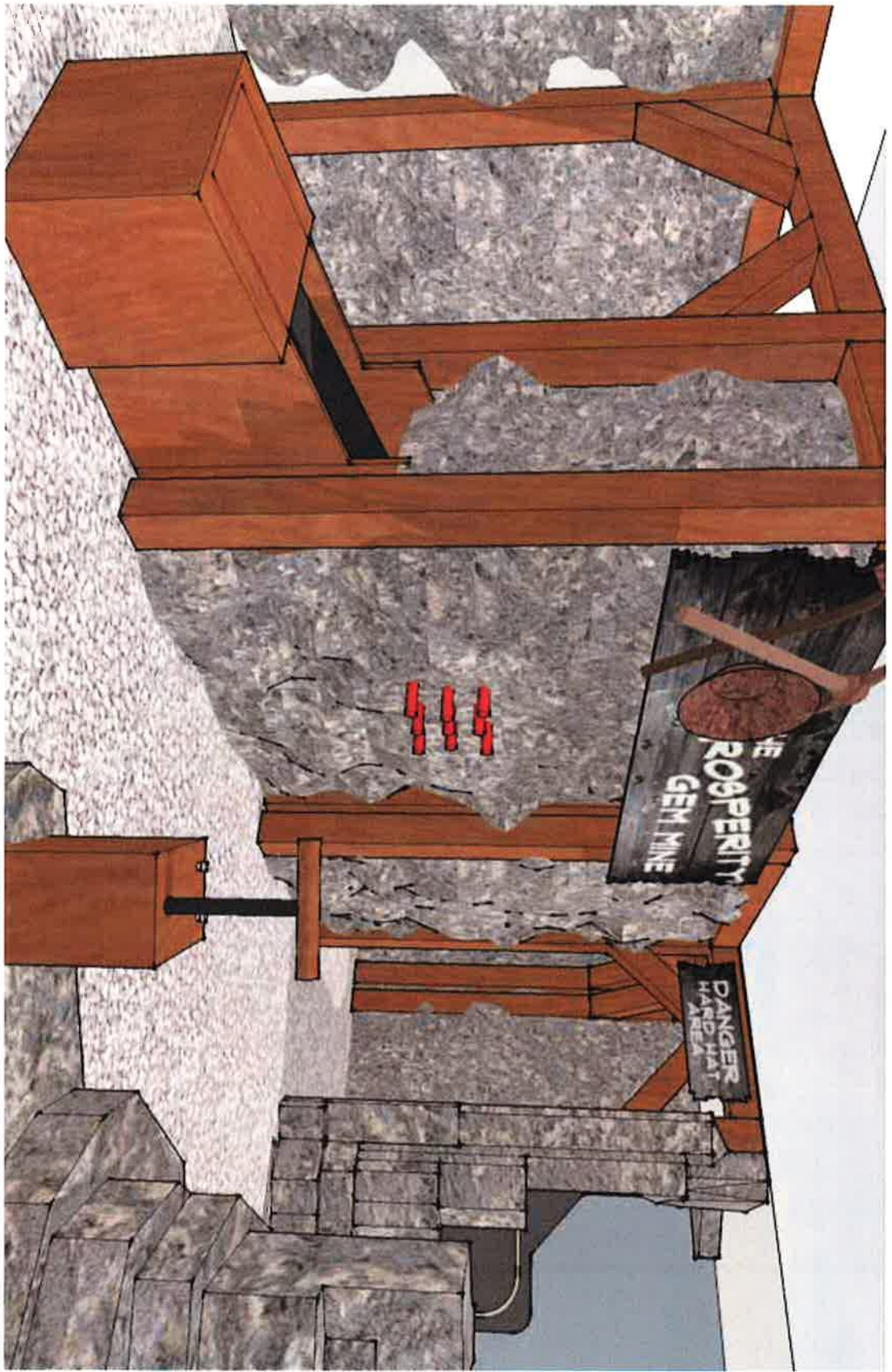


CPI







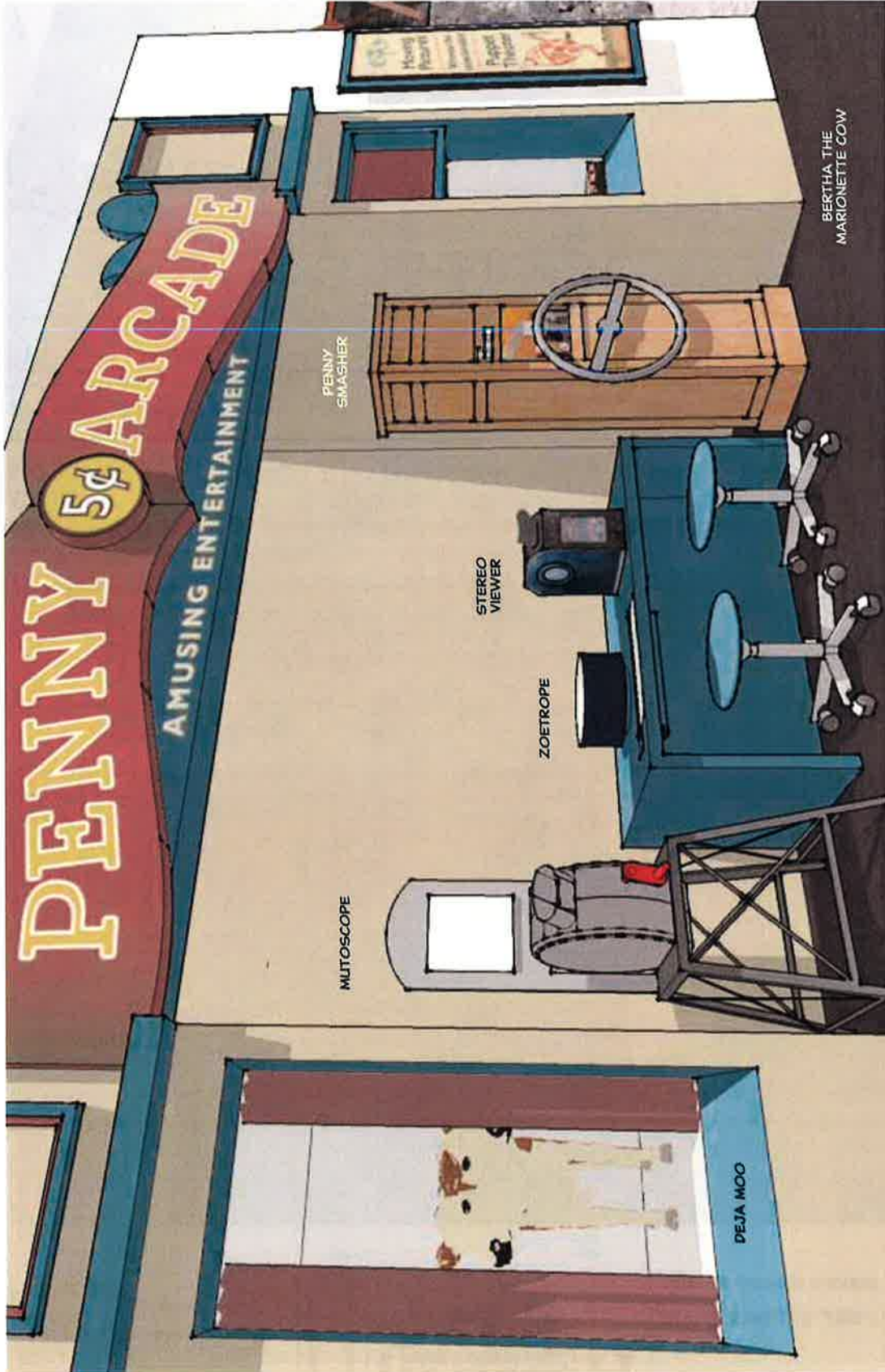


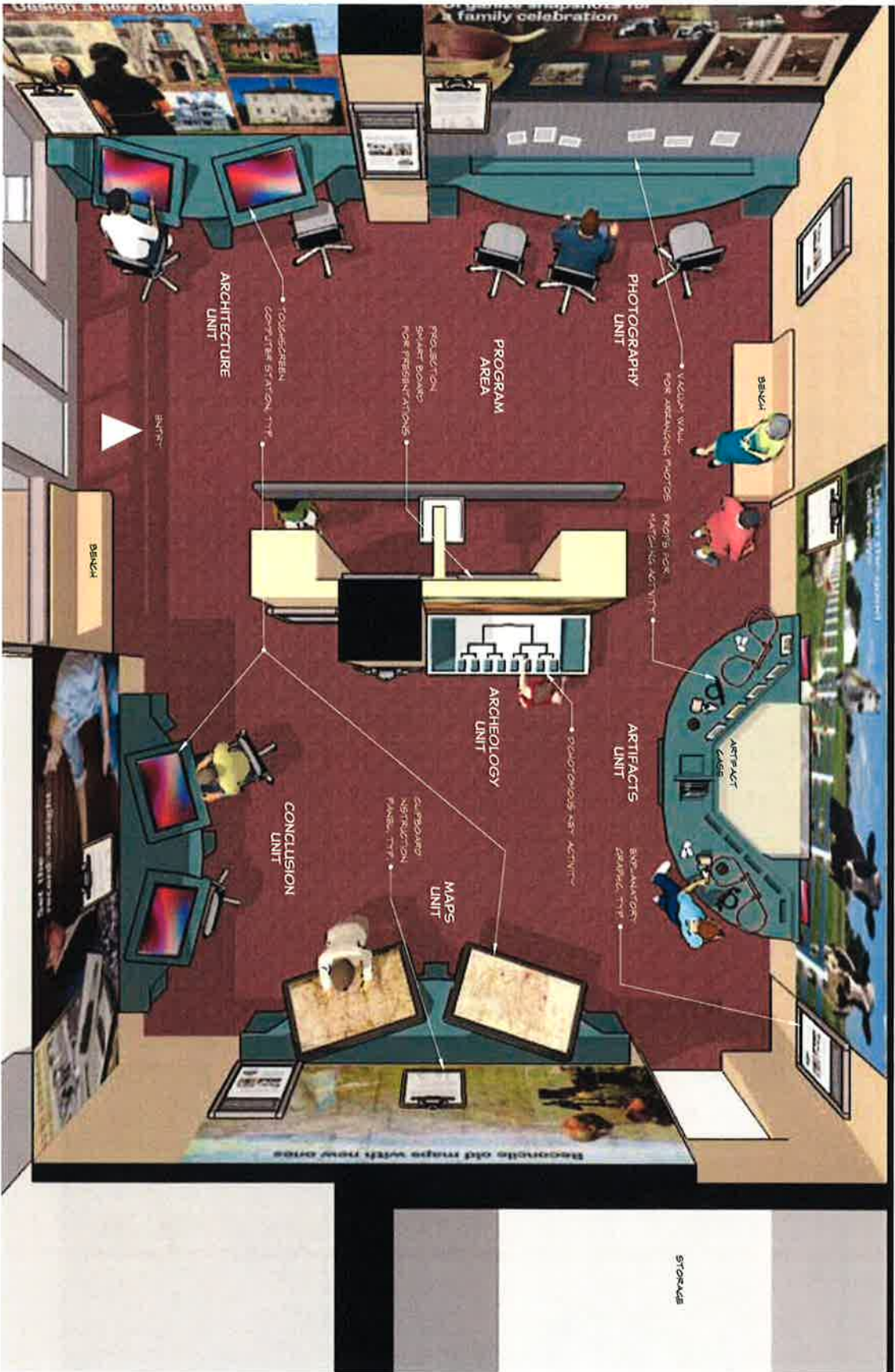
CREATIVE PLAY EXHIBIT AREA
DEEP UNDERGROUND



DATE: NOVEMBER 10, 2015
REV: NOVEMBER 10, 2015







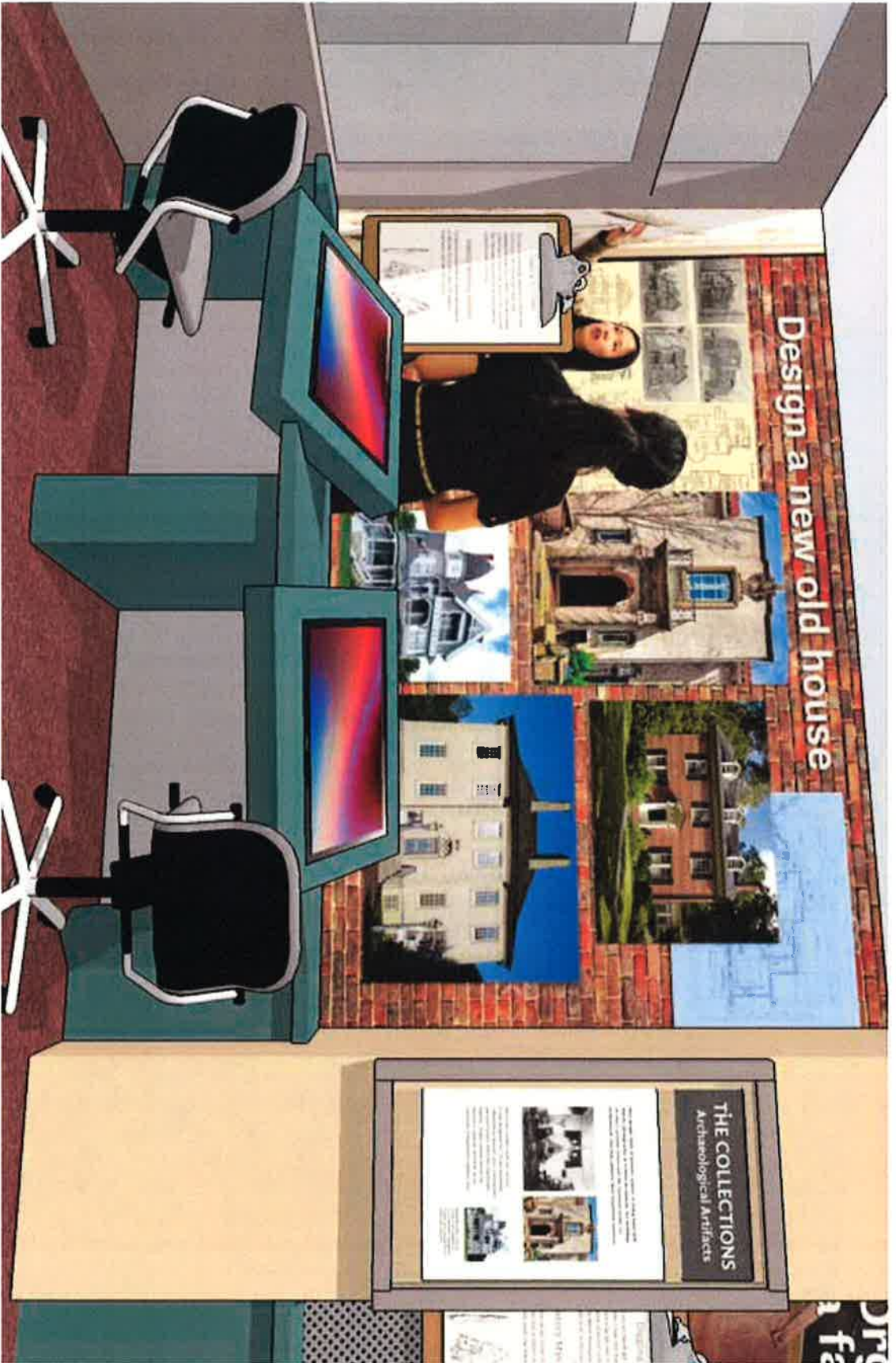
HISTORY LAB EXHIBIT
 PERSPECTIVE
 PLAN



DATE: NOVEMBER 15, 2015
 REV: NOVEMBER 15, 2015

ANDREW MERRIELL ASSOCIATES
 INTERPRETIVE PLANNING AND DESIGN





HISTORY LAB EXHIBIT
EXHIBIT VIEWS



DATE: NOVEMBER 15, 2015
REV: NOVEMBER 15, 2015





HISTORY LAB EXHIBIT
EXHIBIT VIEWS



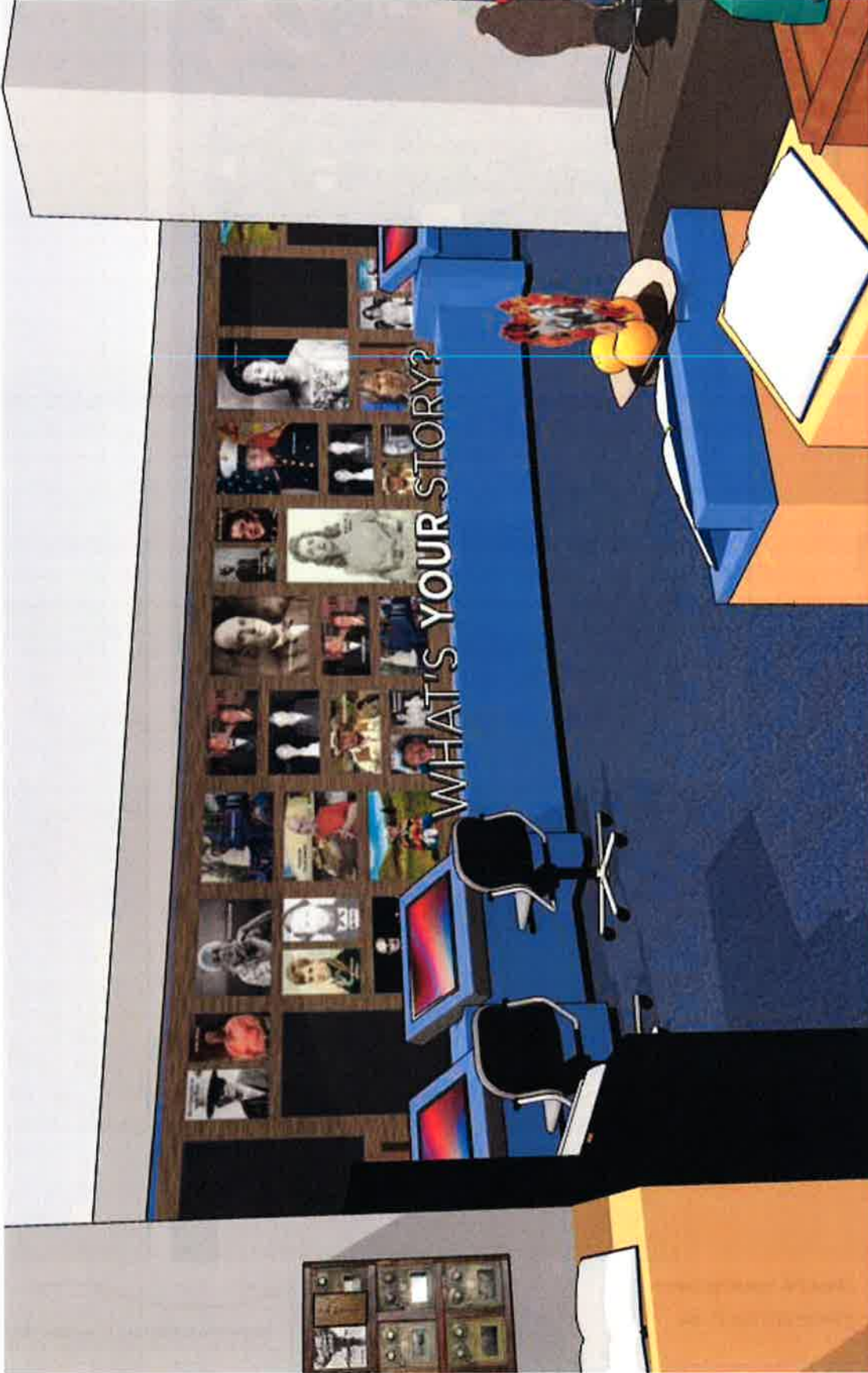


WHAT'S YOUR STORY?
PERSPECTIVE PLAN

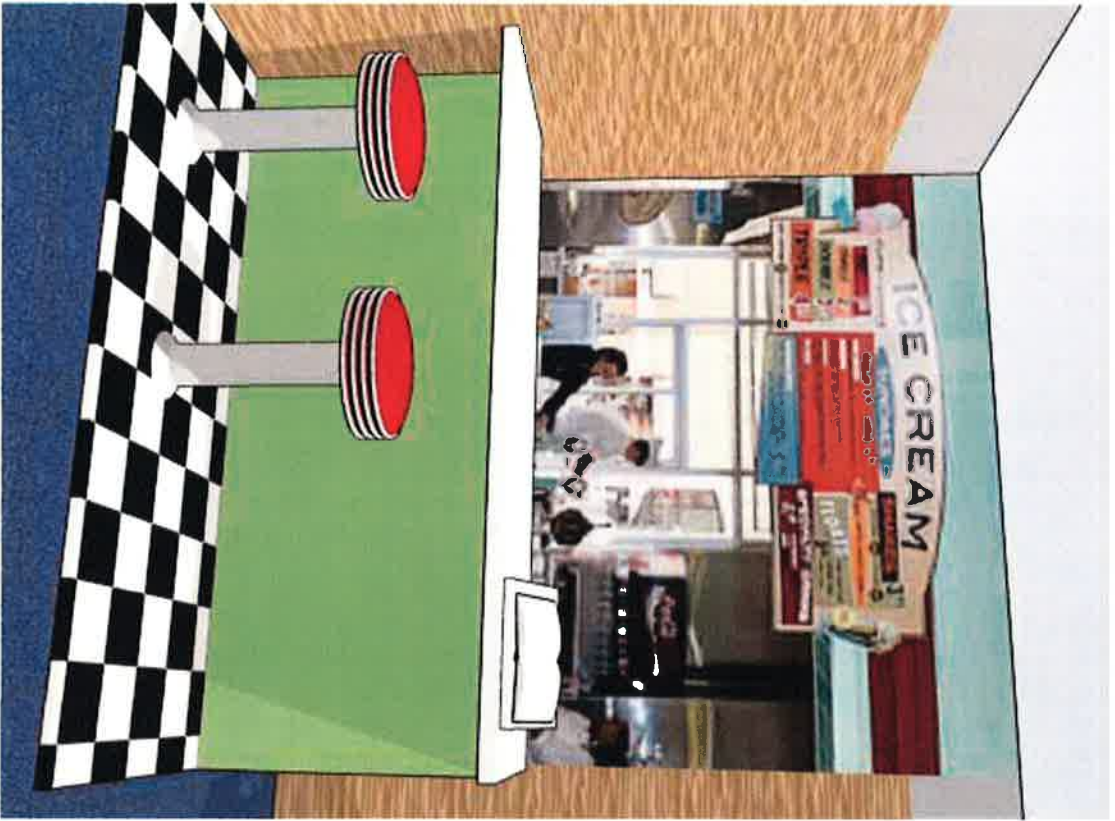


DATE: OCTOBER 29, 2015
REV: NOVEMBER 23, 2015





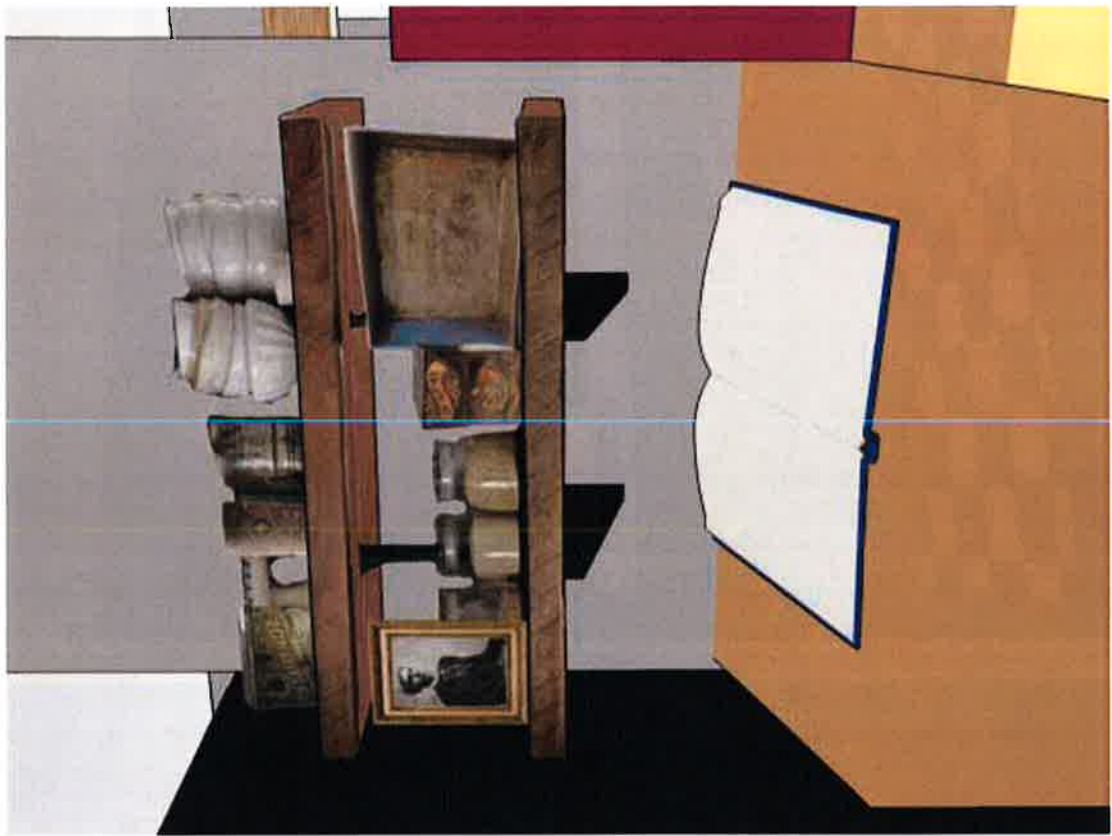
Digital Tapestry



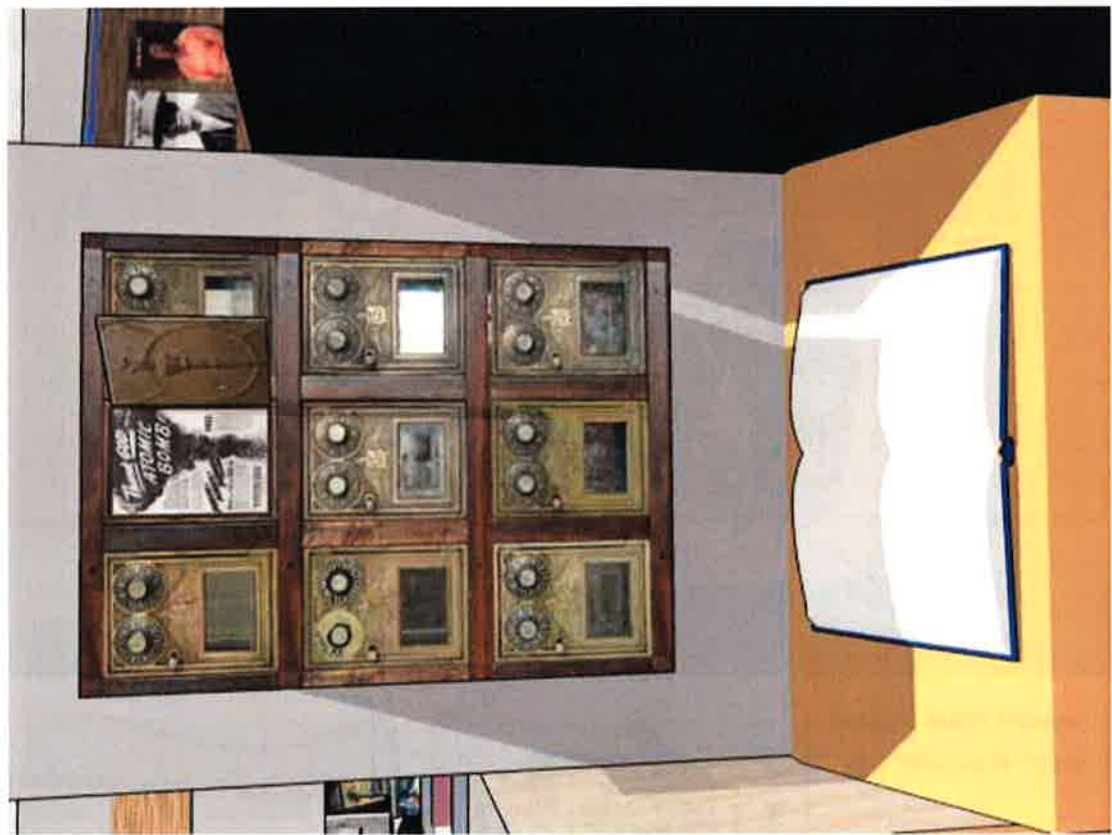
Joe Albertson



Paul Revere Dick



Elvina Moulton



Frank Robinson



Morley Nelson

WHAT'S YOUR STORY?
LOOKING SOUTHWEST



DATE: OCTOBER 29, 2015
REV: NOVEMBER 23, 2015





Governor C. L. "Butch" Otter
Janet L. Gallimore, Executive Director



Board of Trustees

Don Pischner, Coeur d'Alene
Earl H. Bennett, Genesee
Bill Butticci, Emmett
Ernest A. Hoidal, Boise
Tom Blanchard, Bellevue
Jim Johnston, Pocatello
Hope Benedict, Salmon

Board of Directors

Mary Ann Arnold
Bill Butticci- ISHS Trustee
Daniel Chadwick
Denton Darrington
Roy Eiguren
Kam Garner
Dixie Grant
Jim Johnston- ISHS Trustee
David Leroy
Carol Lynn MacGregor, PhD.
Tim S Olson
Martin L. Peterson
Ann Rydalch
Alicia Ritter
Chris Smith
Alice Whitney