

We prepare Idaho's youth and adults for high-skill, in-demand careers.

---



# Better Connecting Education to Careers

## Report to Idaho Senate Education Committee

**Dwight Johnson, State Administrator**

Wednesday, Jan. 31, 2018



## Our Mission

*We prepare Idaho's youth and adults for high-skill, in-demand careers.*

We prepare Idaho's youth and adults for high-skill, in-demand careers.

IDAHO

Career & Technical  
Education



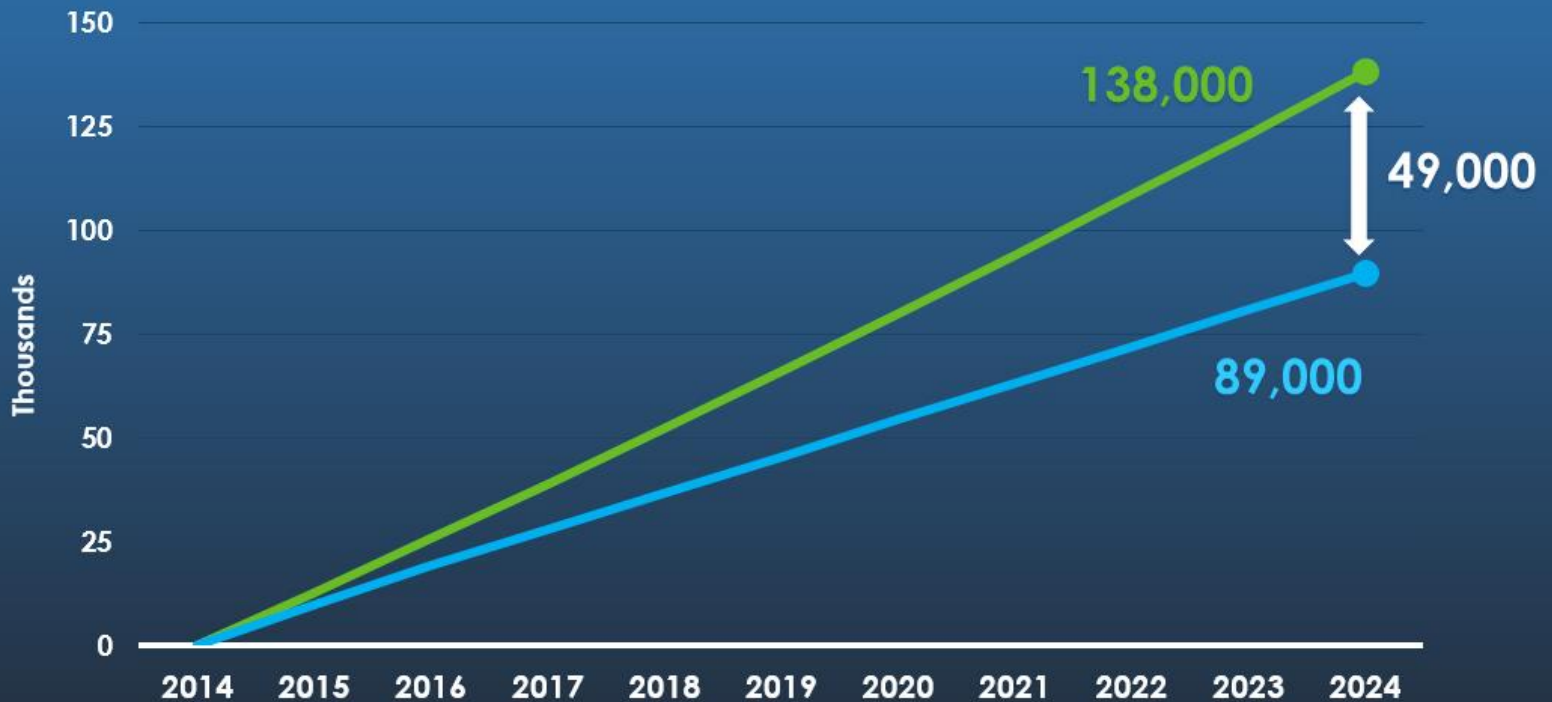
## Why is our Mission Important?

*We provide outstanding career opportunities for Idahoans!*

- Of the top 20 in-demand occupations in Idaho with the highest vacancy rates 17 are tied to CTE programs.
- The starting wages in those 17 occupations range from \$16.50 to \$43 an hour.

# Our Challenge: Labor Supply

## Projected Growth in **Jobs** and **Workforce** 2014 – 2024



Source: Idaho Department of Labor Long Term Industry Projections and Population Forecast

We prepare Idaho's youth and adults for high-skill, in-demand careers.

**IDAHO**

Career & Technical  
Education



## What is Career & Technical Education?



Agriculture &  
Natural Resources



Family & Consumer  
Sciences



Health  
Sciences



Engineering &  
Technology



Business  
Management &  
Marketing



Skilled & Technical  
Sciences





## The value of Career & Technical Education

- Connects students to real careers
- Provides a talent pipeline for Idaho's business
- Makes education meaningful through applied learning

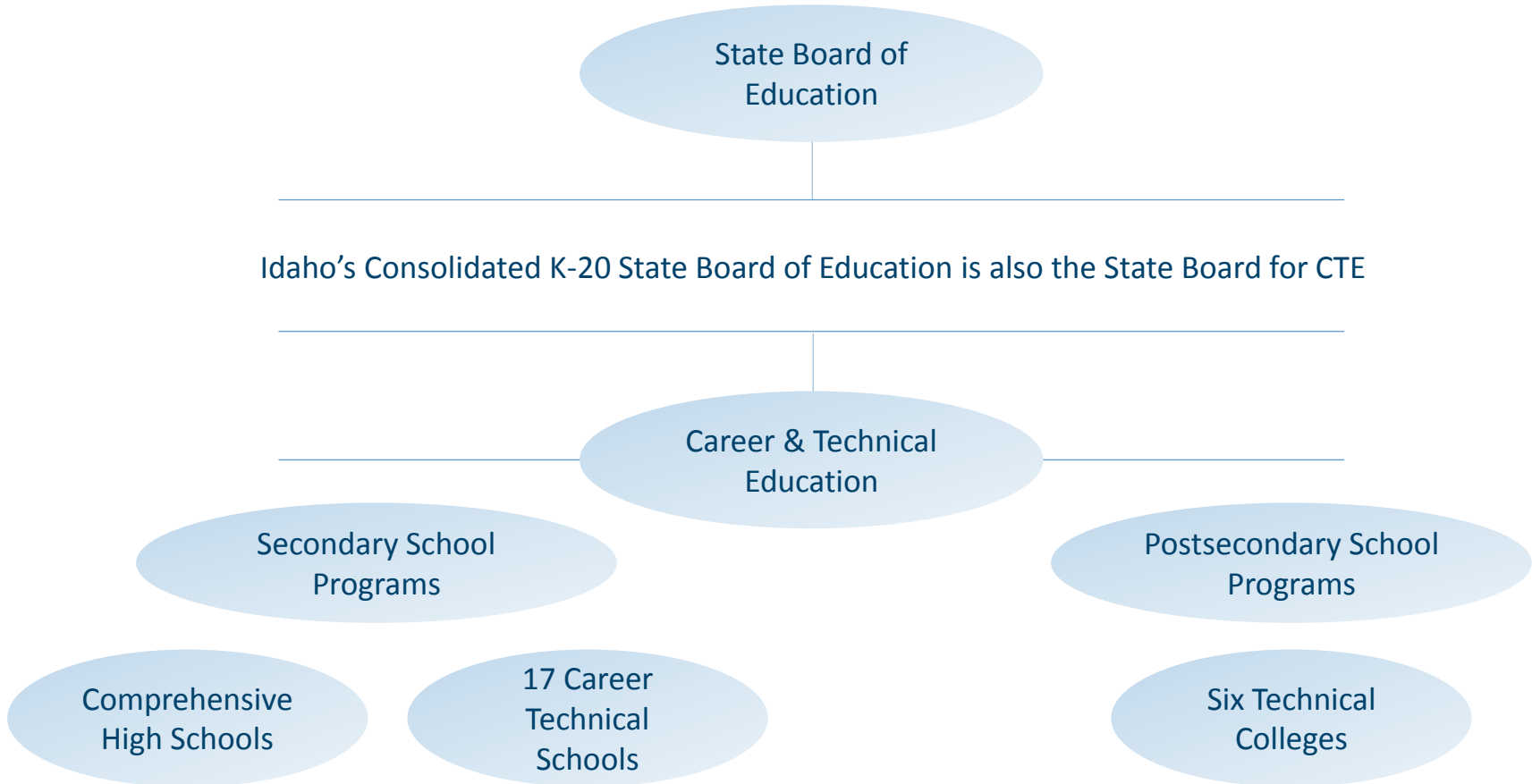
We prepare Idaho's youth and adults for high-skill, in-demand careers.

**IDAHO**

Career & Technical  
Education



# Organizational Structure



We prepare Idaho's youth and adults for high-skill, in-demand careers.



## CTE Postsecondary

- 5,754 students enrolled
- 3,222 degrees / certificates earned in 2016
- 44,801 students participated in non-credit workforce training

**96%** of technical college completers found jobs or continued their education.



North Idaho College

Lewis-Clark  
STATE  
COLLEGE



College of Eastern Idaho



Idaho State  
UNIVERSITY



We prepare Idaho's youth and adults for high-skill, in-demand careers.



## Secondary CTE

- 718 programs
- 59,575 students enrolled in CTE courses
- 7,783 CTE concentrators (taking a sequence of CTE courses)
- 10,132 students enrolled in career & technical high schools



**66%** went on to college compared to **49%** of all Idaho students

**96%** of CTE high school graduates found a job or moved into postsecondary education

We prepare Idaho's youth and adults for high-skill, in-demand careers.



## ICTE FY18 Budget Overview

Postsecondary CTE	\$53.69 Million
Secondary CTE*	\$16.53 Million
Statewide Initiatives	\$1.35 Million
Division Support (4.2%)	\$3.18 Million
<b>Total:</b>	<b>\$74.75 Million</b>

### NOTE:

\* Secondary CTE Teacher salaries from General Education Budget – \$40 million

We prepare Idaho's youth and adults for high-skill, in-demand careers.

**IDAHO**

Career & Technical  
Education



## FY18 Secondary Budget: \$16.53 Million

**Added Cost**  
\$7.9 million

**CT Schools**  
\$4.8 million

**Ag  
Incentive**  
\$325,000

**Program  
Quality**  
\$300,000

**Federal  
Perkins**  
\$3.2 Million





We prepare Idaho's youth and adults for high-skill, in-demand careers.

**IDAHO**

Career & Technical  
Education



## FY18 Postsecondary Budget: \$53.69 Million

<b>CTE For Tech Degrees</b>	<b>Adult Education</b>	<b>Centers for New Directions</b>	<b>Workforce Training Centers</b>	<b>Federal Perkins</b>
\$45.9 million	\$3.44 Million	\$1.14 million	\$483,100	\$2.6 Million





“Meeting the employer demand for more skilled workers is among our most serious challenges.”

Governor C.L. Otter (2018 State of the State Address)

We prepare Idaho's youth and adults for high-skill, in-demand careers.

## Governor's Workforce Development Task Force



### Recommendations Regarding:

- *Workforce Development Council and Industry Partnerships*
- *Workforce Development Training Fund*
- *Public Engagement*
- *Connecting Education to Careers*
- *Workforce Training Centers and Adult Training Support*
- *Strengthen Career Advising*
- *Workforce Readiness*
- *Apprenticeships*
- *Expand Career and Technical Education Programs*



June 2017

Final Report

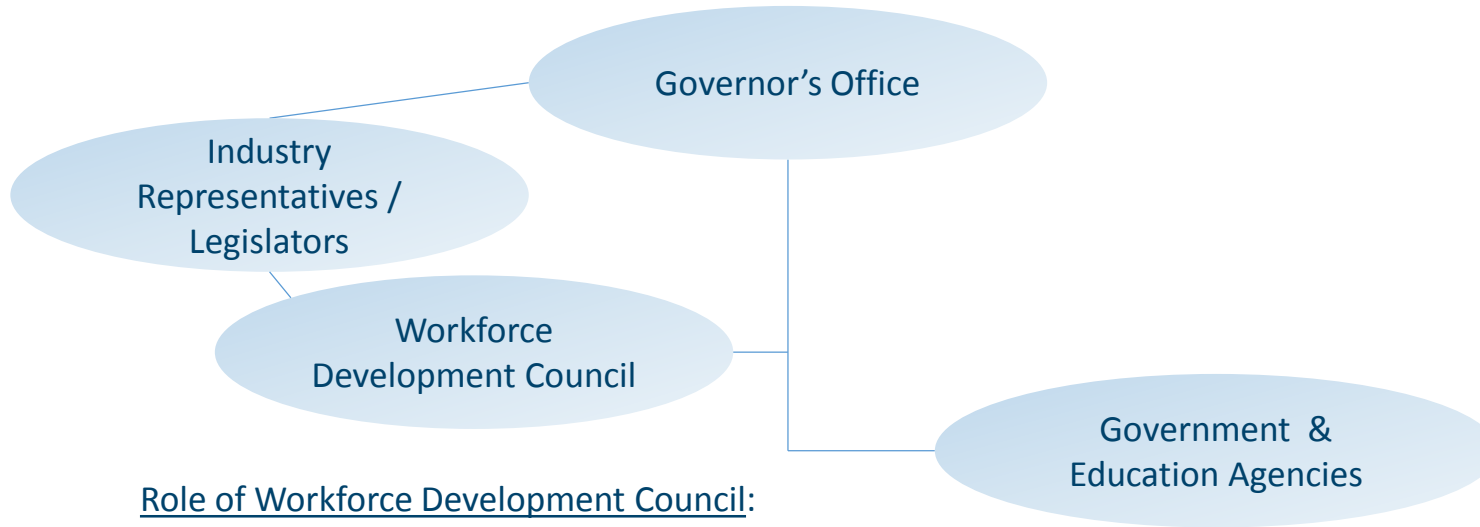
STATE OF  
**IDAHO**  
U S A



We prepare Idaho's youth and adults for high-skill, in-demand careers.



## Workforce Development System



### Role of Workforce Development Council:

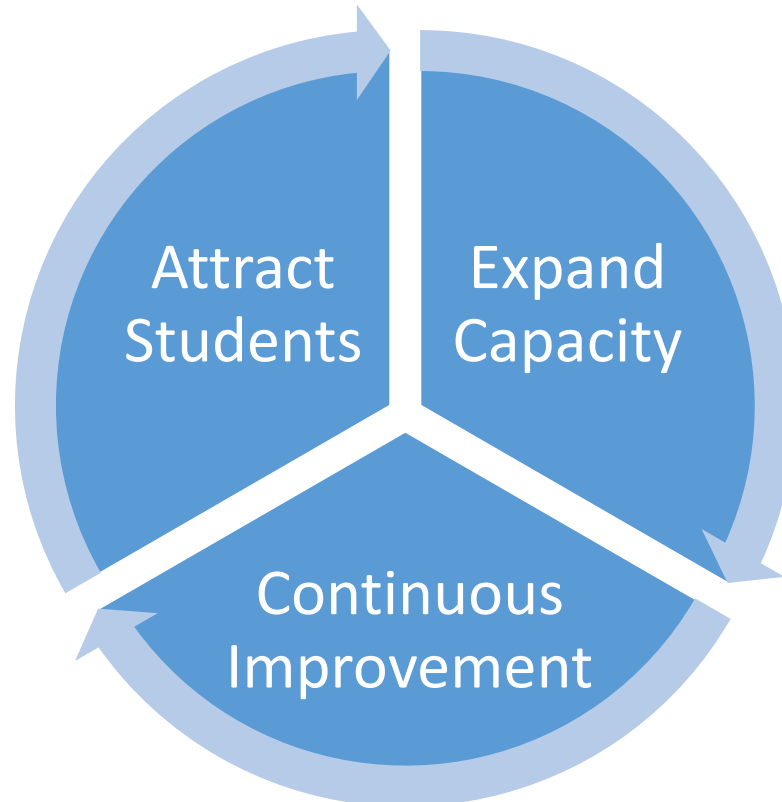
- Advise Governor and State Board on Workforce Strategy & Policies
- Oversee Workforce Development Training Fund
- Oversee federal WIOA funds

- State Board of Education
  - State Department of Education
  - Colleges & Universities
  - **Career & Technical Education**
  - Division of Voc-Rehabilitation
- Department of Labor
- Department of Commerce
- Department of Health and Welfare
- STEM Action Center

We prepare Idaho's youth and adults for high-skill, in-demand careers.



## Talent Pipeline for Business Career Pipeline for Students





Attract  
Students

### **CTE Image**

Continue to increase visibility, enhance perceptions, and inform students & families of the opportunities available through CTE high schools and Idaho's technical college programs

### **New Postsecondary CTE Facilities**

LCSC, NIC, CEI, ISU, CWI

### **Expand CTE to Middle Schools for Career Exploration**

Legislation proposed to allow ICTE to begin funding CTE programs starting in seventh grade. Develop program curriculum and implementation budget to expand career exploration program for middle schools.

We prepare Idaho's youth and adults for high-skill, in-demand careers.



### **Secondary CTE Capacity Expansion - \$300,000**

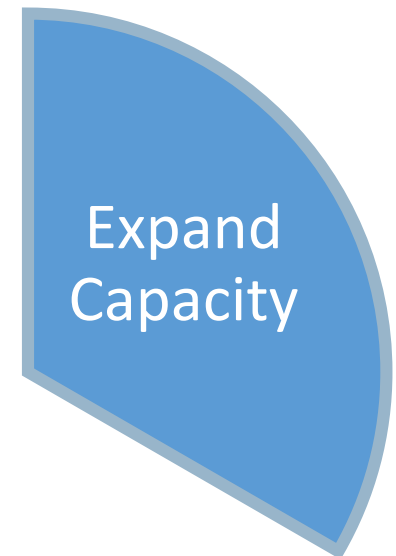
Increase funding for Program Quality Incentive grants for high quality CTE programs and to improve low performing programs

### **Expand Workforce Training Center Capacity - \$750,000**

To respond to business training needs. 44,801 Idahoans received short-term occupational training in 2017 with 90% completion rate.

### **Postsecondary CTE Capacity Expansion - \$978,000**

Expand 7 programs in business, health care, information technology, manufacturing, and transportation for high-wage, high-demand careers.



We prepare Idaho's youth and adults for high-skill, in-demand careers.



## Postsecondary Capacity Expansion

7 Programs	Business, Health Care, Information Technology, Manufacturing, and Transportation
High Demand	793 annual job openings
Current Graduates	161 (253 on waitlist)
High Wages	Median Hourly Wage: \$26.85
Request	\$978,900
Projected Results	107 additional graduates

We prepare Idaho's youth and adults for high-skill, in-demand careers.



### **Learn & Earn Models of Education**

Continue to expand apprenticeships, School-To-Registered-Apprenticeship Programs (STRAP), internships, Co-ops, Career Technical Student Organizations.

### **Career Ready Incentives:**

ICTE is working with the Governor's office and Idaho Business for Education to develop a program to incentivize school districts who graduate career ready students

Continuous  
Improvement

A blue fan-shaped graphic with a white border, containing the text "Continuous Improvement" in white, sans-serif font.





**Thank you!**

