

## Context

- Created by executive order in 1991.
- *Idaho Rural Development Partnership Act* passed by legislature in 2008 and codified in Title 67, Chapter 90 Idaho Code.
- Structured as an “Independent Public Body Corporate and Politic”
- Idaho Department of Labor serves as IRP’s host agency.
- 35-member board includes legislators; local, state and federal government reps.; tribes; private and nonprofit sectors; higher education; and INL.
- Funding currently comes from federal grants, private sector sponsorships, and contributions from businesses and organizations in the individual rural communities we work with most directly.

IRP brings multiple agencies and organizations together to help rural communities clarify and work toward their desired future.

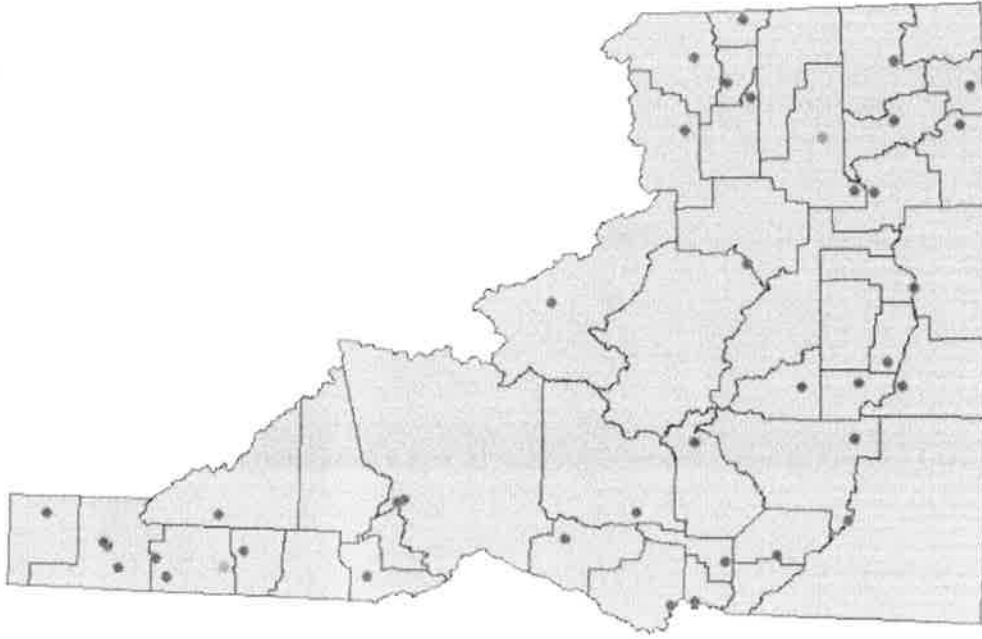
Outcomes produced by our collaborative efforts:

- Increased community capacity to complete community and economic development projects
- Increased efficiency and reduced duplication among agencies and organizations
- Increased awareness of funding and other resources available to rural communities
- Increased understanding of conditions, opportunities, and successful models in rural Idaho
- Identification of unnecessary impediments to rural development.

# IDAHO'S COMMUNITY REVIEW PROGRAM REACHES STATEWIDE

The Idaho Rural Partnership implemented the Idaho Community Review Program in 2000. A community review is an assessment and strategic planning process designed for towns with fewer than 10,000 people. The program brings together community members and local leaders with experts in rural community and economic development to identify local priorities and resources to achieve them.

Community reviews are co-developed with local leaders, business owners, and residents. Each review is unique, focuses on a wide range of community issues, and is tailored to the community. This process helps communities move from assessment to action to results.



- 41 community reviews since 2000
- 3 new assessments each year
- Plans underway in Blackfoot

*“The community review gave us  
more confidence that  
future projects would succeed.”*

# Idaho Community Review Program

## Phase 1

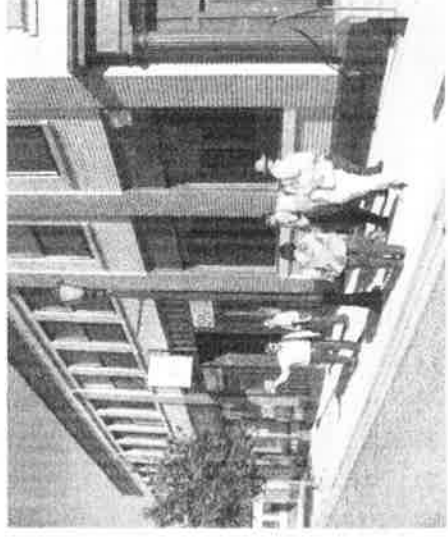
Survey of residents  
Listening sessions  
Demographic & economic profile

## Phase II

Larger team of visiting professionals work with community to develop actions plan for three focus areas identified during Phase I.

## Phase III

Coaching to support implementation of action plans developed during Phase II.



# UNIVERSITY OF IDAHO IS STUDYING WAYS TO IMPROVE THE COMMUNITY REVIEW PROGRAM

University of Idaho and a USDA National Institute of Food and Agriculture research grant are helping us identify ways communities benefit from participating in the IRP Community Review program.

To date, five communities have participated in the evaluation process called "Ripple Effects Mapping," which helps communities identify the chain of effects resulting from the review and their implementation efforts. Another 10 communities, at least, will be evaluated before the grant ends in 2020.

Participating communities receive up to \$1,000 to implement a project identified as a need by their review.



Western  
Community  
Assessment  
Network

[www.communityreview.org](http://www.communityreview.org)

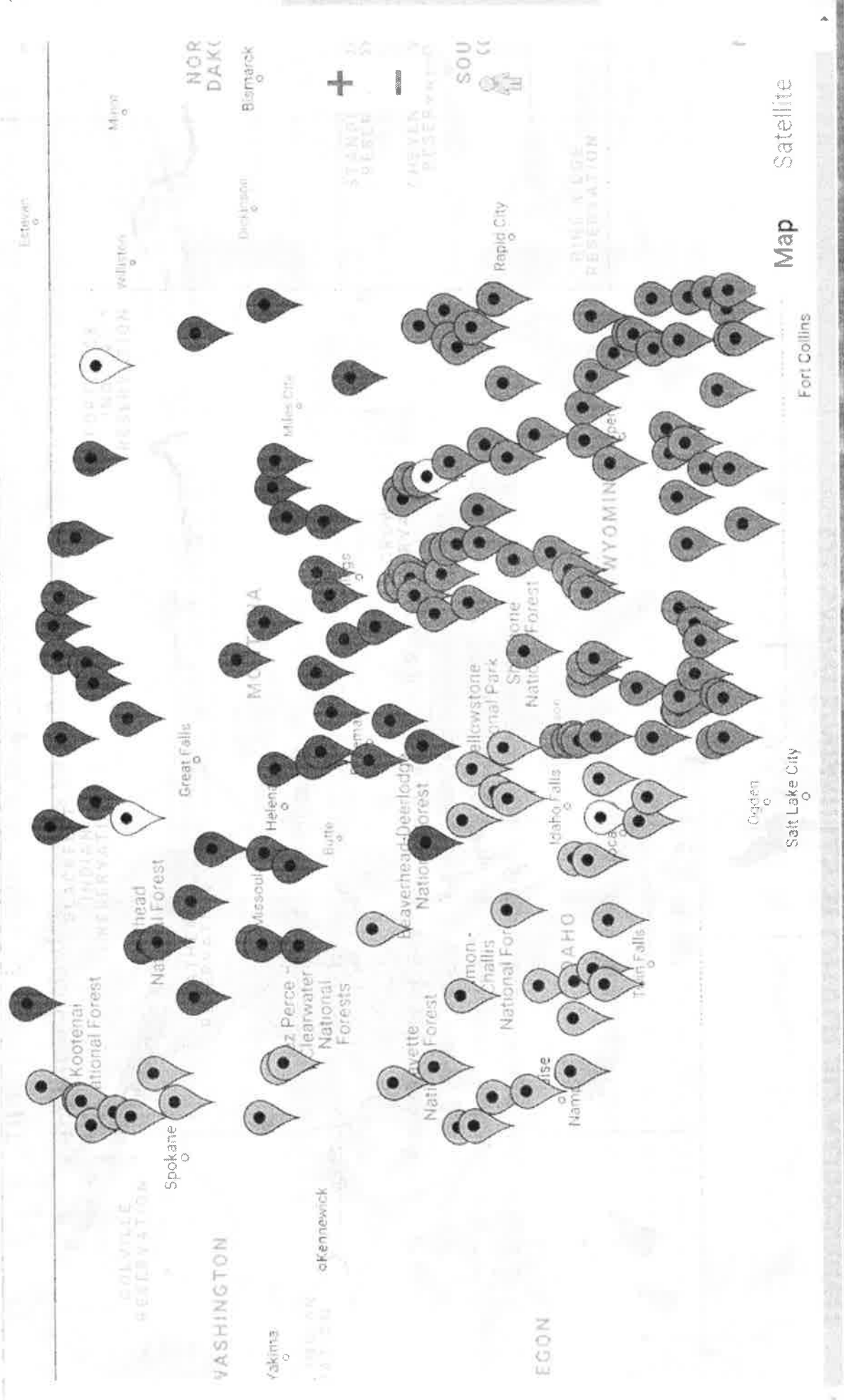


University of Idaho



This project is supported by USDA's Agriculture and Food Research Initiative (AFRI) of the National Institute of Food and Agriculture, Grant #2016-10945. It is part of the AFRI Foundational program.

***"Funding sources want to know you have done a community review. They want to know you've done the planning. They want to know you didn't throw a funding request together at the last minute."***



# IDAHO'S COMMUNITY REVIEW PROGRAM HAS POSITIVE IMPACTS ON RURAL COMMUNITIES

## ECONOMIC DEVELOPMENT

### **Ashton**

New office building opened

### **Fairfield**

\$375,000 for Soldier Road main street improvement: sidewalks, curbs, traffic calming, and beautification

## IMPROVEMENTS IN INFRASTRUCTURE

### **American Falls**

\$2.5 million for water infrastructure

## BRINGING PEOPLE TOGETHER

### **Glenns Ferry**

ArtWalk with historical art contest

### **Meadows Valley**

Community Dinner

# IDAHO'S COMMUNITY REVIEW PROGRAM HAS POSITIVE IMPACTS ON RURAL COMMUNITIES

## NEW PROGRAMS FOR YOUTH

### American Falls

\$150,000

for skatepark

\$2 million

for safe routes to school

## INCREASING TOURISM

### Ashton

\$1,500 YTT to connect

to Tetonias Trail

### Glenns Ferry

Ghost Tour

funding (DOC Travel

Council grant)

## INCREASING PUBLIC SAFETY

### New Meadows

\$300,000 for sidewalks

and ADA ramps (GEM)

### Fairfield

\$380,000 for

walking path (ITD)



## Our other activities

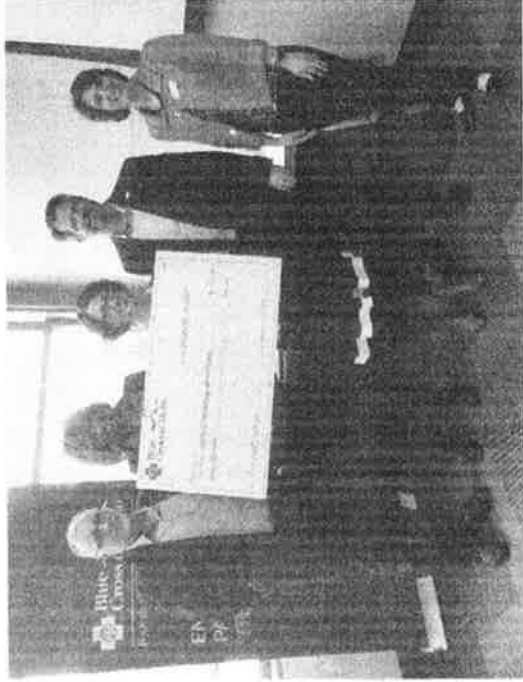
- Statewide Comprehensive Economic Development Strategy
- Broadband
- Rural health



# Rural Health

## Summer 2018

IRP partners with Idaho Policy Institute and students in Boise State's MPA program, who completed analysis of existing data to identify health trends comparing rural and urban counties. (see related handout)



## Fall/winter 2018

IRP enters into partnership with Blue Cross of Idaho Foundation for Health and Idaho Community Foundation to conduct health-related community outreach in a number of rural counties in 2019.

## Disparities between Urban and Rural Idaho

Unemployment

Teen Pregnancy

Obesity

Intimate Partner Violence

Heart Disease Death

Food Insecurity

Education: High School Diploma or...

Divorce

Diabetes

Crime

Completed Suicide

Cancer  
Urban Rural

HEALTH DISPARITIES BETWEEN RURAL AND URBAN IDAHO, SUMMER 2018.  
DATA AND ANALYSIS COMPILED BY CRYSTAL CAMPBELL, NIKKI HANSON, REECE RANDALL, THORPE ORTON AS PART  
OF A MASTERS OF PUBLIC ADMINISTRATION CAPSTONE PROJECT.

# What we're hearing in rural communities

- Communities want youth to have the option of returning (“rural returners”) as young adults
- Divisions limiting collaboration among community groups, getting in the way of forward progress
- Desire for arts, cultural, and recreation opportunities
- How do we increase people volunteering for community organizations and projects?
- Housing
- Broadband
- Growth and change is okay, but not at the expense of small town values.

**THANK YOU!**

Jon Barrett  
Executive Director  
208-332-1731  
208-383-9687 (mobile)  
jon.barrett@irp.idaho.gov

Contact the Idaho Rural Partnership to learn more about,  
or participate in, the Community Review Program:

[http://irp.idaho.gov/home/community\\_review/](http://irp.idaho.gov/home/community_review/)  
[irpcommunityreview@irp.idaho.gov](mailto:irpcommunityreview@irp.idaho.gov)

Watch for comprehensive reports

on

[www.communityreview.org](http://www.communityreview.org)

over the next year

