



College & Career Readiness: Advanced Opportunities Report



Supporting Schools and Students to Achieve

SHERRI YBARRA, ED.S., SUPERINTENDENT OF PUBLIC INSTRUCTION

National Recognition and Accolades



Idaho's Advanced Opportunities Program, which helps students get a jump start toward college and career, offers a worthy example for "state policymakers seeking ways to improve the quality of high school instruction and expand postsecondary access and attainment," according to a May 2020 report from the Manhattan Institute.

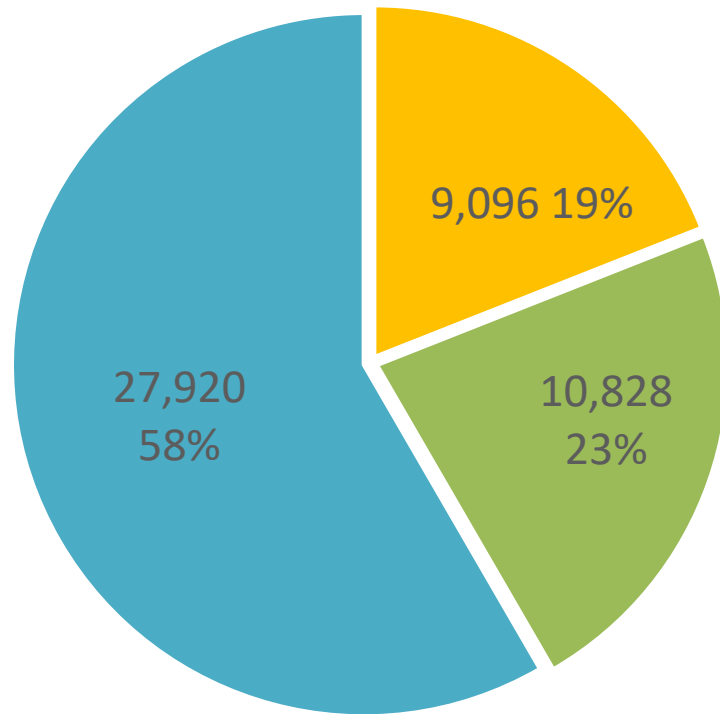
The report, "How Idaho is Reshaping High Schools by Empowering Students," focuses on Idaho's unique advanced opportunities program.

Most states across the country now have laws to enable dual enrollment, but "Idaho's Advanced Opportunities program has been particularly successful," the report states.

Proportions of the Program

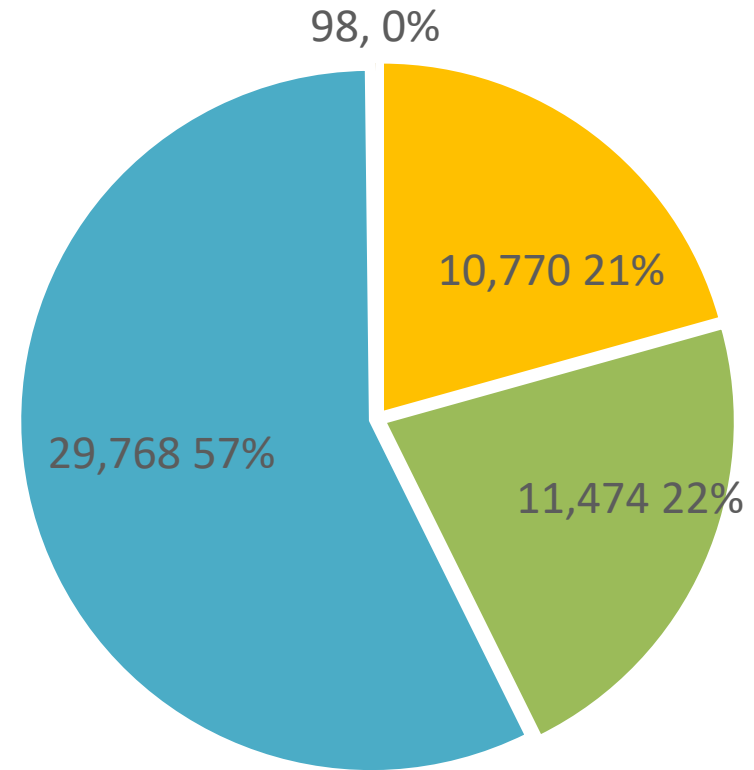


FY 2019 Proportion of Student Use



Overload Exams Dual Credit

FY 2020 Proportion of Student Use

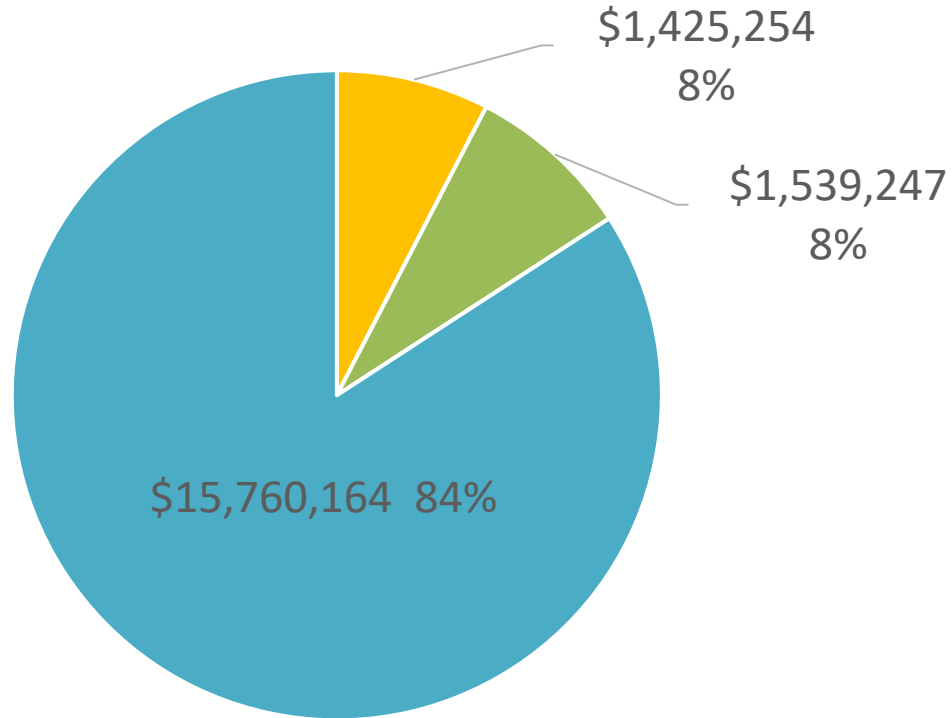


Overload Exams Dual Credit Workforce

Proportions of the Program: Reimbursements

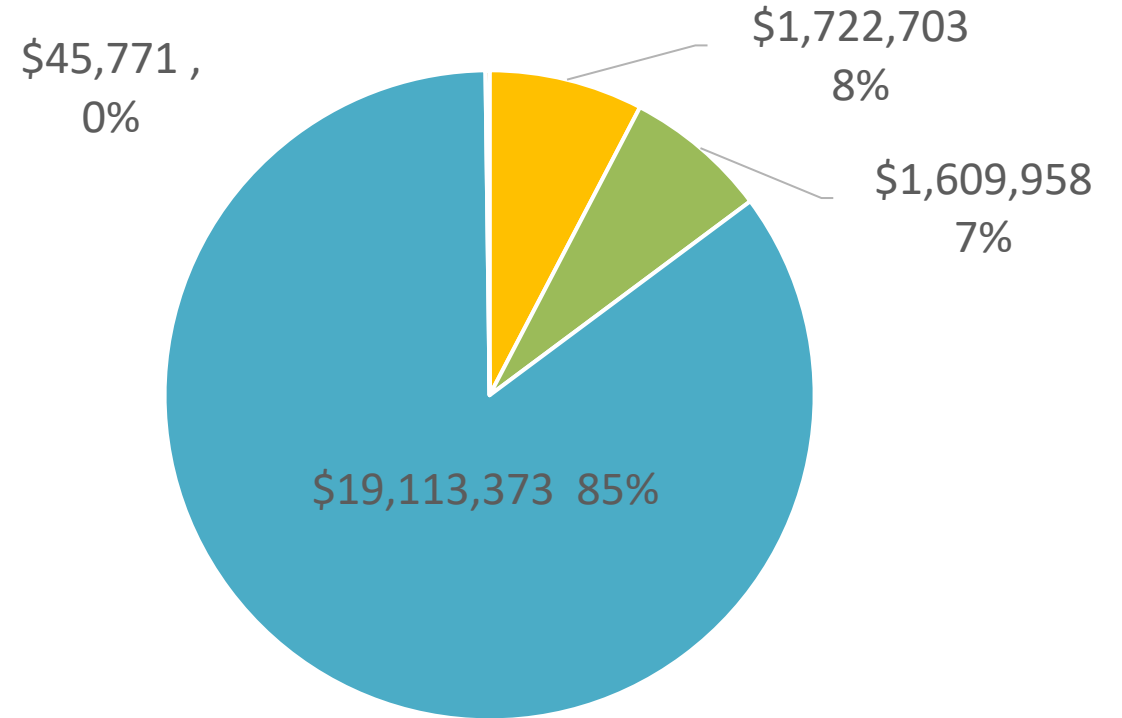


FY 2019 Proportion of Reimbursements



Overload Exams Dual Credit

FY 2020 Proportion of Reimbursements



Overload Exams Dual Credit Workforce

Demographics



Race	Number of Students	Percent Participating in Adv Ops	Statewide Comparable Percent
American Indian	249	0.63%	1.12%
Asian	739	1.88%	1.28%
Black or African American	344	0.88%	1.18%
Hispanic	5,613	14.28%	18.25%
Native Hawaiian or Pacific Islander	118	0.30%	0.31%
White	31,248	79.50%	75.12%
Multiple	993	2.53%	2.74%

Total number of students using A.O.: **39,304**
This is a an **8% increase over the prior year.**

Gender

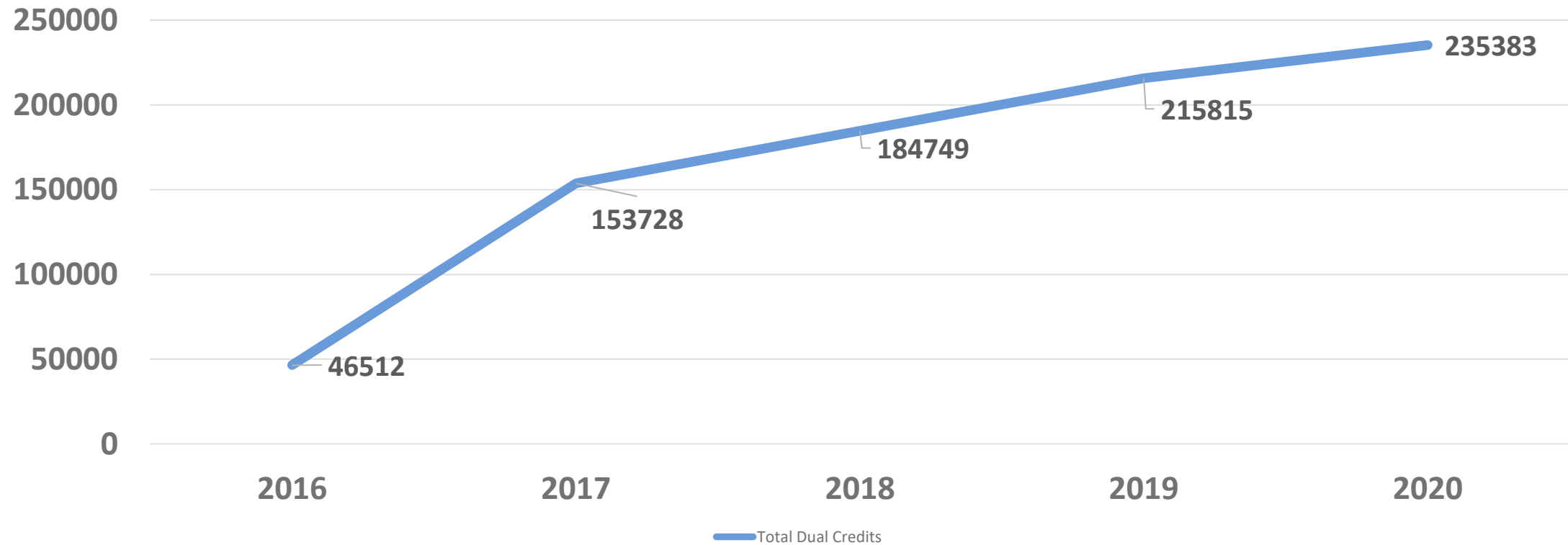


Gender	Number of Students	Percent Participating in Adv Ops	Statewide Comparable Percent
Female	22,201	56.49%	48.71%
Male	17,087	43.47%	51.29%
Unknown	16	0.04%	n/a

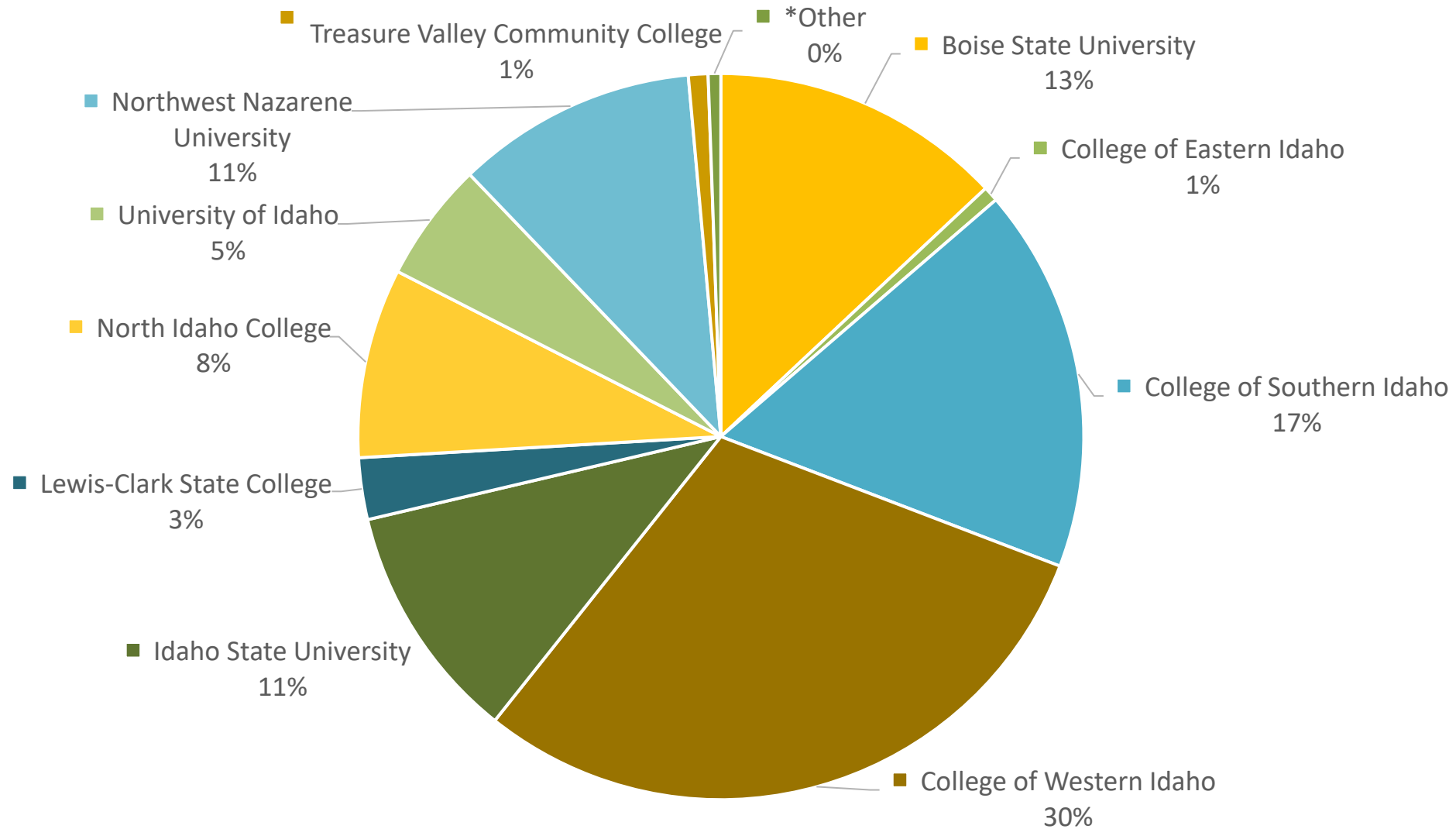
Dual Credit



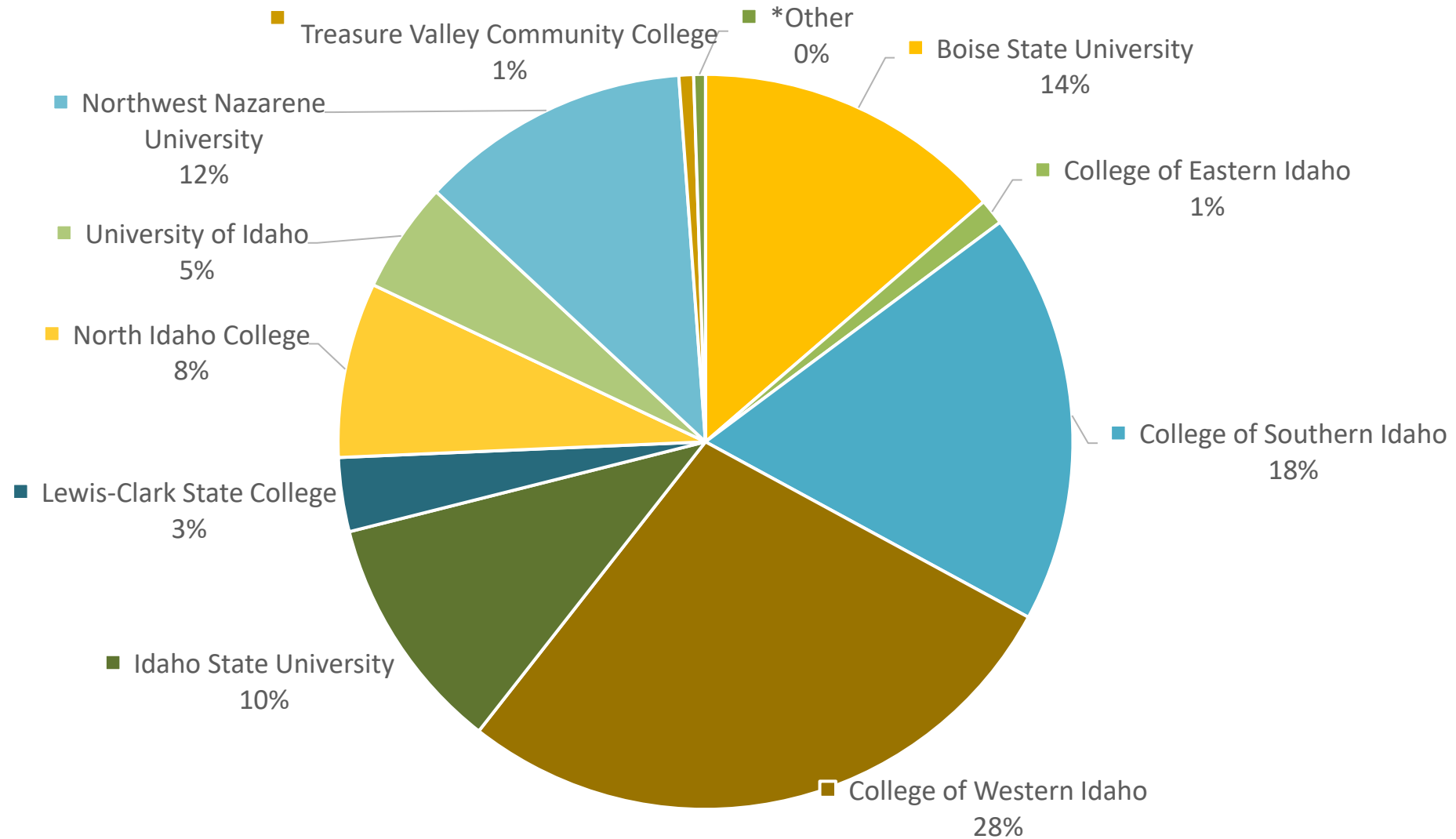
Total A.O. Dual Credits Attempted



Dual Credit by College: 2019



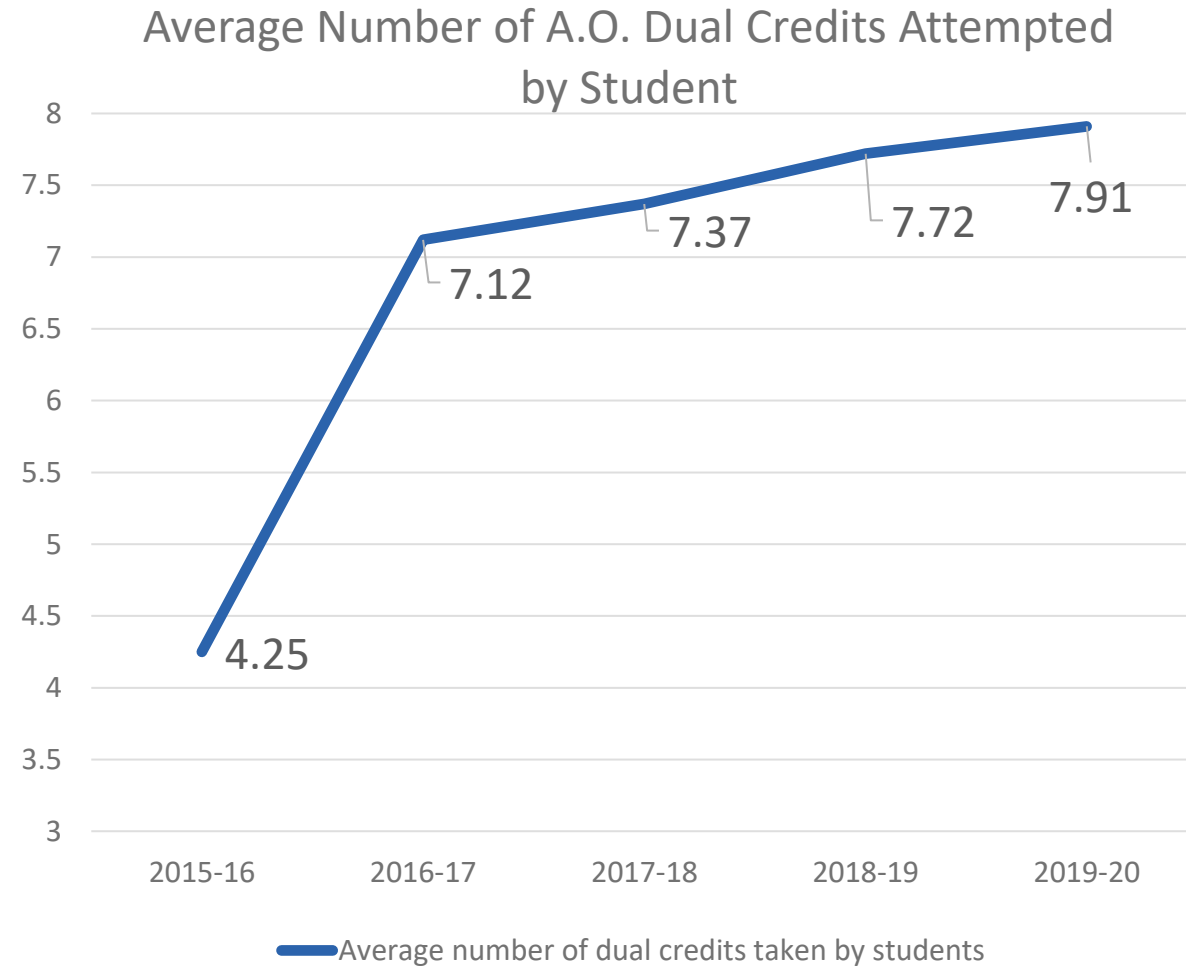
Dual Credit by College: 2020



Dual Credit



29,768
students took Dual
Credit courses in 2020,
a 7% increase from
2019



A0 Money Utilized



Total Student Usage

Amount Expended by Students	
\$4,125	758
> \$3,500	1,021
> \$3,000	1,234
> \$2,500	2,464
> \$2,000	5,214
> \$1,500	9,654
> \$1,000	18,610
> \$500	35,817
> \$ 0	74,348
Total:	149,120*
*Data is from all student use from FY17, FY18, FY19 and FY20.	

Early Graduation Scholarship



Students Awarded Scholarship	Students Eligible for Scholarship
2019 Total = 93	2019 Total = 334
2020 Total = 76	2020 Total = 331

2021 Preliminary Numbers to Date



	TOTALS FALL 2019	TOTALS FALL 2020	DIFFERENCE FROM FA19 TO FA20
OVERLOAD COST	\$215,214	\$136,830	\$78,384 (26.5% reduction in cost)
OVERLOAD CREDITS	2,325	2,051	274 credits (11.8% reduction in credit)
OVERLOAD AVERAGE COST	\$92.56	\$66.70*	\$25.86 average course cost savings
DUAL CREDIT COST	\$7,846,214	\$6,413,479	\$1,432,735 (18.3% reduction in cost)
DUAL CREDITS TAKEN	104,609	85,510	19,099 credits (18.3% reduction in credits)

***MANY IDLA COURSES ARE \$15 INSTEAD OF \$75 BECAUSE OF COVID RELIEF FOR FA20.**

THESE NUMBERS ARE PRELIMINARY.



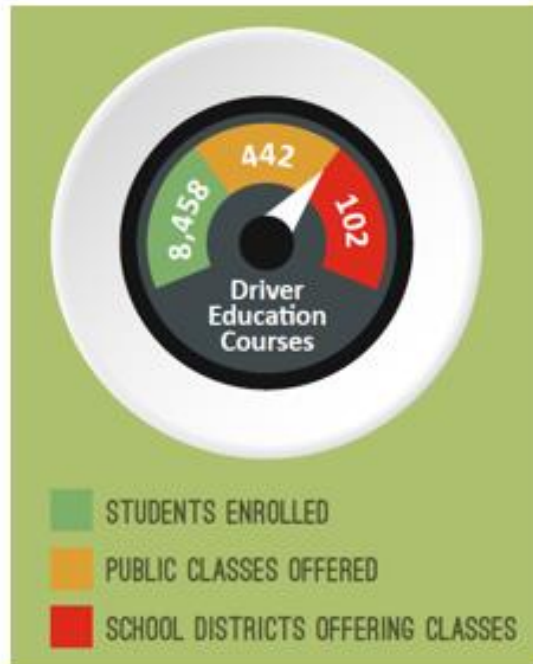
College and Career Readiness: Student Engagement



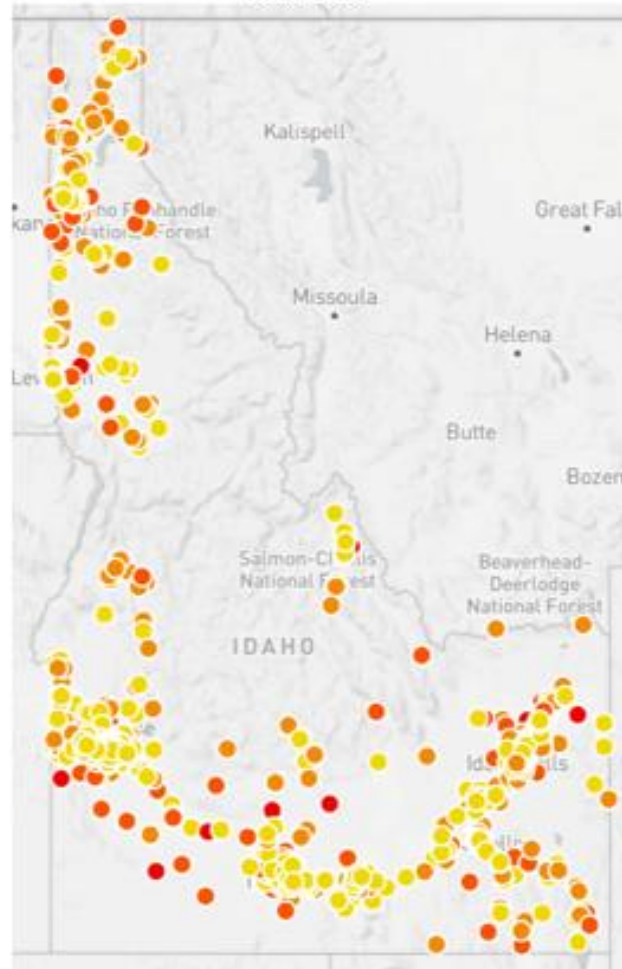
Supporting Schools and Students to Achieve

SHERRI YBARRA, ED.S., SUPERINTENDENT OF PUBLIC INSTRUCTION

Idaho Public Driver Education

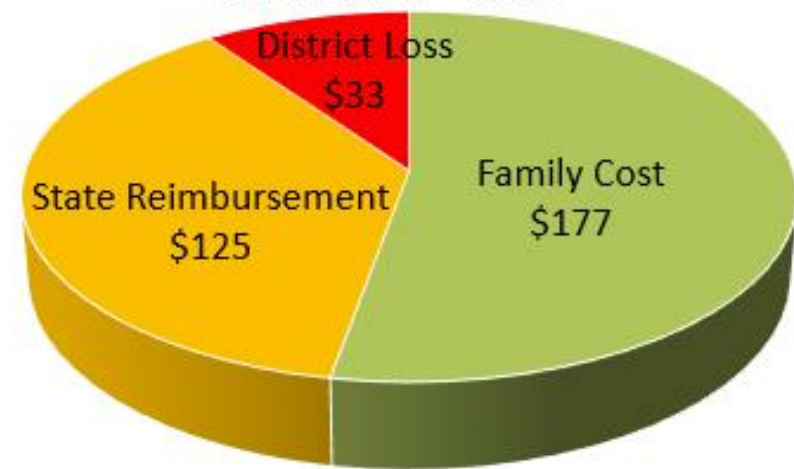


2020 Youth Driver Injury Crashes
(age 15-19)



Red= Fatal Injury, Red/Orange= Suspected Serious Injury, Orange= Suspected Minor/Visible Injury, Yellow= Possible Injury/Complaint

2020 average Driver Education cost per student = \$335



31 new driver education instructors currently in training

Beginning testing of Phase II: Instructor Profiles of the Driver Education Portal

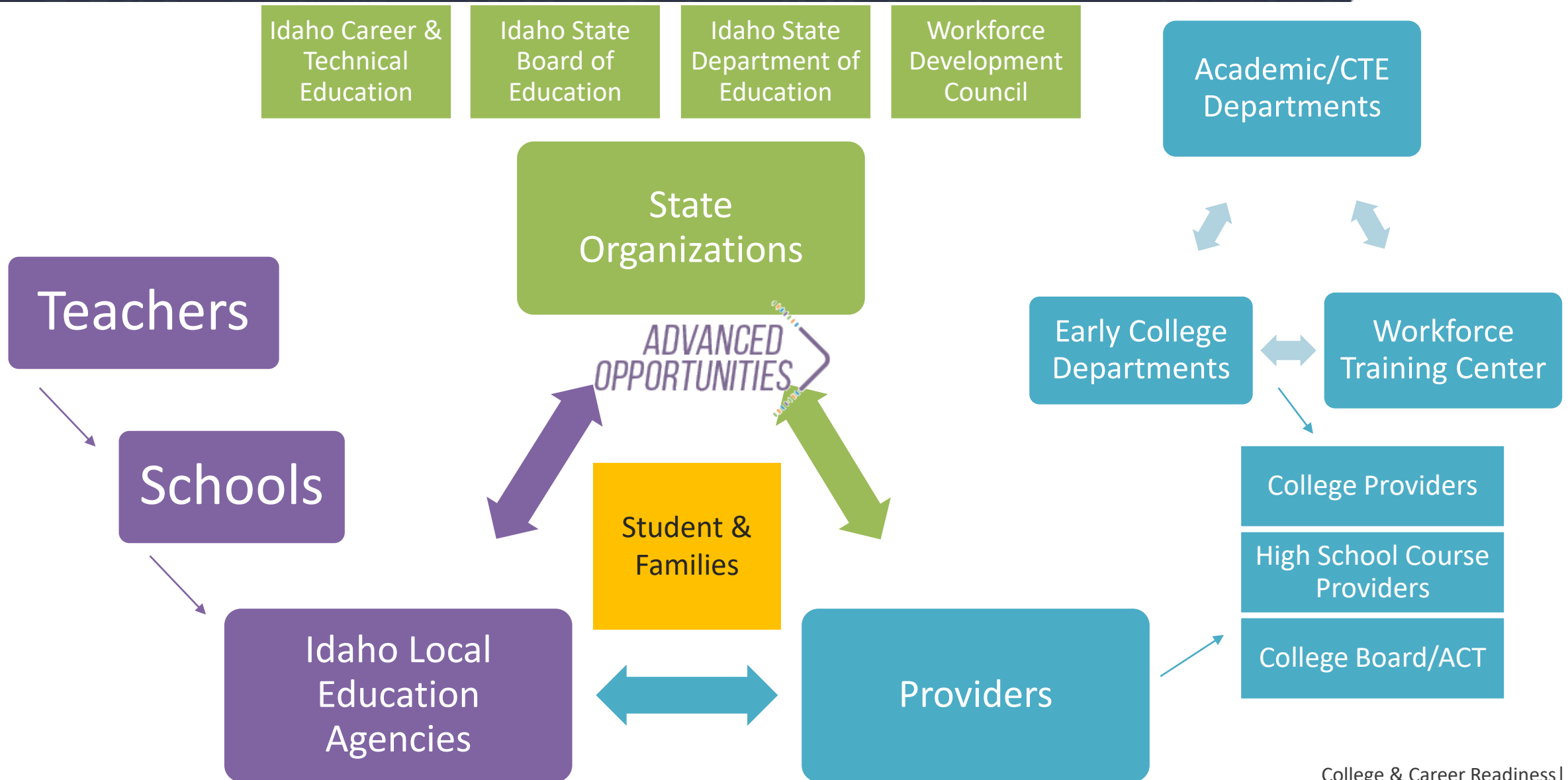
Advising within Advanced Opportunities



*ADVANCED
OPPORTUNITIES*



Advanced Opportunities Network



Advising and Supports



- Advising Module
- Webinars
- Presentations
- Manuals
- Brochures/Flyers
- Student/Parent Nights
- Videos

Total Student Usage

Amount Expended by Students

\$4,125	758
> \$3,500	1,021
> \$3,000	1,234
> \$2,500	2,464
> \$2,000	5,214
> \$1,500	9,654
> \$1,000	18,610
> \$500	35,817
> \$ 0	74,348
Total:	149,120*

*Data is from all student use from FY17, FY18, FY19 and FY20.



COLLEGE AND CAREER ADVISING PARTNERSHIPS



PROFESSIONAL DEVELOPMENT



- Attended by over 275 Counselors, Administrators, and College Access Staff.
- Presentations were provided by over 35 state and national partners covering the topics of:
 - Advising/Learning Plans
 - College and Career Programming
 - Key Academic Transitions
 - Professional Skill Building



- 35 participants from around the state committed to a yearlong learning community.
- Focus topics include:
 - Teacher Leadership
 - Building a College and Career Culture in Schools
 - Financial Aid/Scholarships
 - Advising

ABOUT GEAR UP



- 5,700 students in 23 districts throughout the state.
- Served these students from the 7th grade through their first year of college. Students are currently in the 8th and 9th grades.
- Program Activity Requirements include:
 - College Awareness
 - Career Awareness
 - Financial Literacy/Financial Aid
 - Social and Emotional Learning/Life Skills
 - STEM Activities
 - Service Learning
 - Individual Planning
 - Parent Engagement
 - Teacher Professional Development
- 112,700 hours of documented services in 2019/2020

EXPANDING PROGRAM REACH



DEV
LEAGUE

- February 11, 2021
- Open to all 8th - 12th graders in Idaho
- Over 60 companies plus:
 - Mock Interview Sessions
 - Soft Skills Workshops
 - Career Presentations
 - Industry Panel Discussions
- Over 4,500 students registered so far!

CAMPUS
TOUR
APP

SHIFT

Strategic planning workshop for College and Career Programs.

- Training Includes:
 - Learning from the past
 - Considering best practices
 - Understanding the building blocks
 - Assembling a plan
 - Moving from planning to action
 - Adjusting your plan

Curated Toolkits on SDE's College and Career Advising Page (Coming Soon!)

- Parents: Guide To Advanced Opportunities
- Parents: Supporting Your Student On Their Journey To College
- Educators: A New Coordinator's Guide To College Readiness Programming
- Educators: A Workflow For Supporting Student Career Readiness
- Educators: Incorporating College and Career Into The Classroom
- Educators: Supporting Students' Transition To High School
- Educators: GREAT IDEAS! Activities and Best Practices From Around The State
- Students: Navigating Your Path To College
- Students: 9th Grade, What You Need To Know About High School
- Students: Preparing For The Workforce After High School

Questions



Dr. Eric Studebaker | Director of Student Engagement & Safety Coordination

Idaho State Department of Education

208 332 6961 – Office

208 404 1532 - Cell

estudebaker@sde.idaho.gov

www.sde.idaho.gov



Supporting Schools and Students to Achieve

SHERRI YBARRA, ED.S., SUPERINTENDENT OF PUBLIC INSTRUCTION