

Bridge Conditions on Local Road Network

LHTAC Presentation to
Idaho Senate Transportation Committee

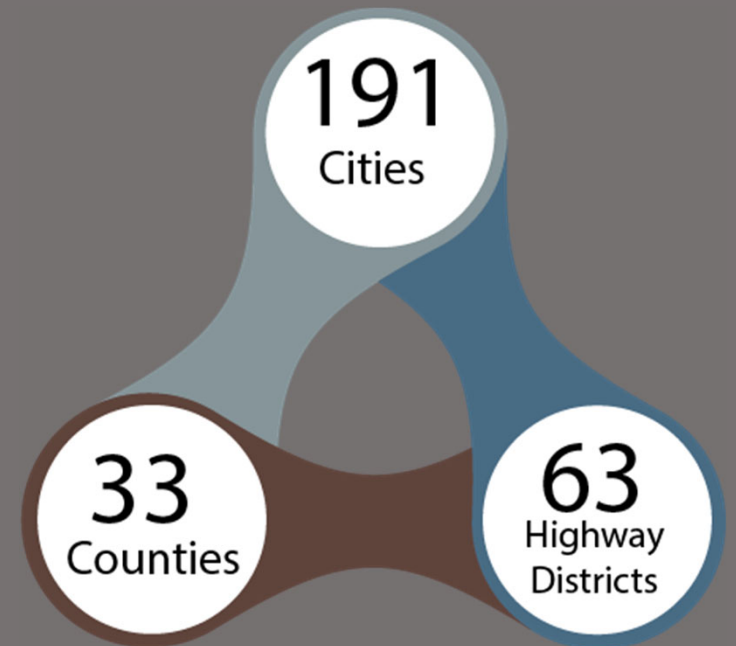
Laila Kral, P.E.
LHTAC Administrator



Intact2 Who We Are



Currently Serving

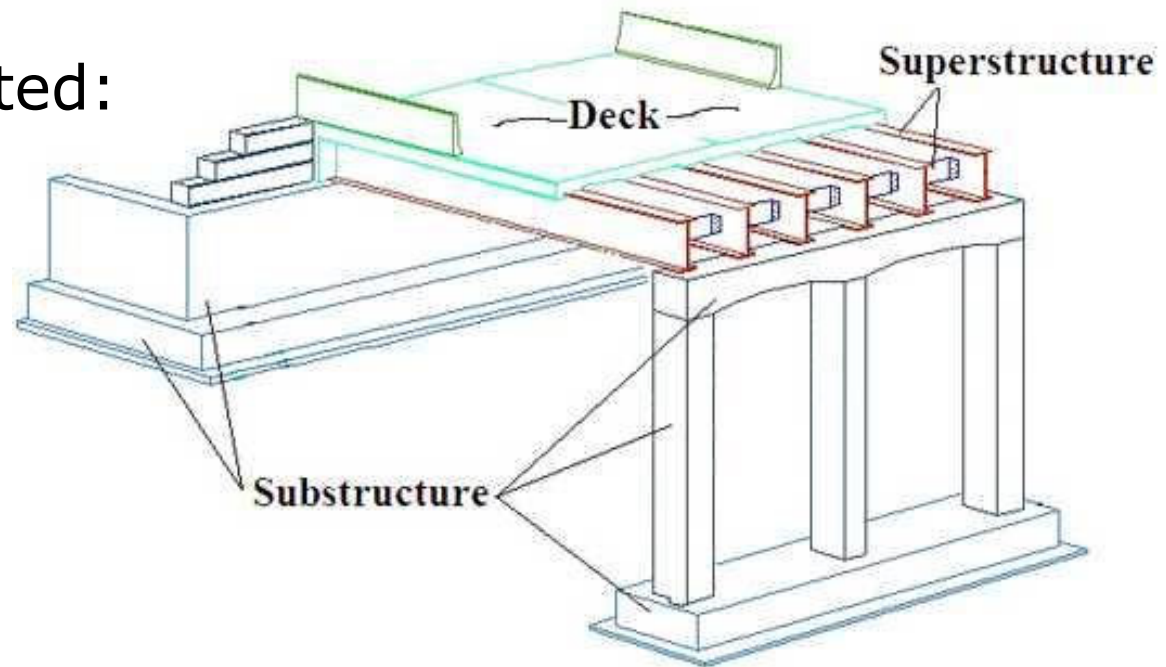


Bridge Defined As...

Span greater than 20'

Three components inspected:

- Deck
- Superstructure
- Substructure

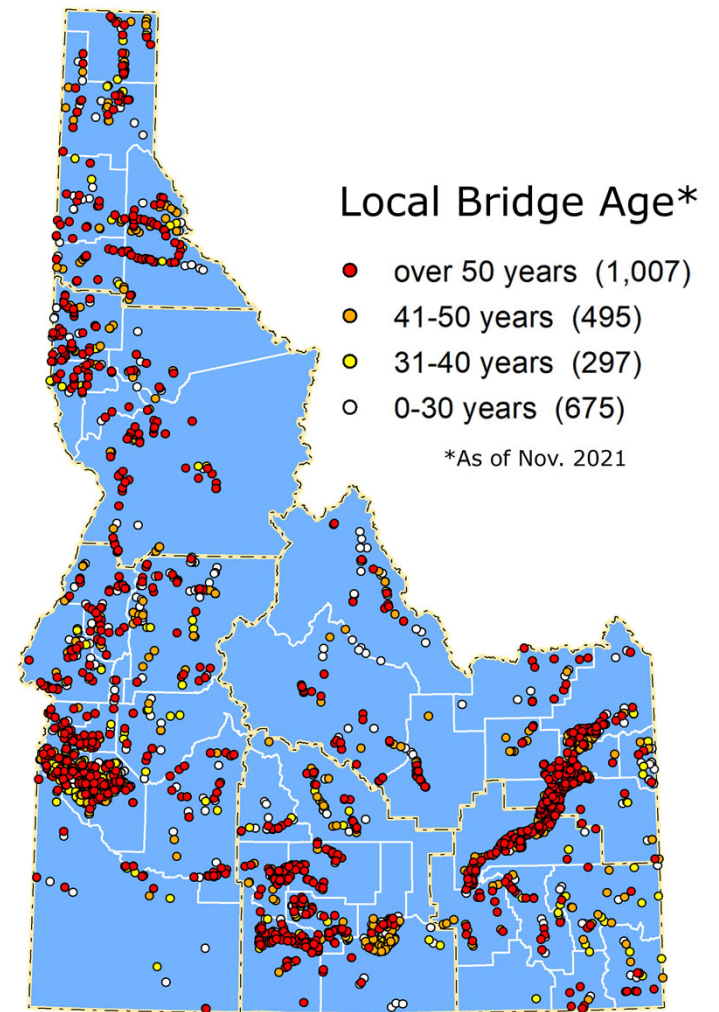


Advocate | Support | Train



Bridges on Local Roadway Network

Network	>20'	Small Structure 10' to 20'
Local System	2,474	1,928
State System (not on map)	1,340	491



Bridge Inspection

Each bridge inspected every 2 years (typically)

- ITD obligates \$1.9 million from Federal local bridge funds for inspection
- ITD uses state HDA funds (user fees) to match local 7.34% requirement (up to \$175,000) per IC 63-2412



Ihtact2 Advocate | Support | Train

Bridge Conditions

- Deck, superstructure, and substructure each get graded
- Bridge overall condition defaults to lowest-graded section
- Condition informs posting bridge for load weight limits

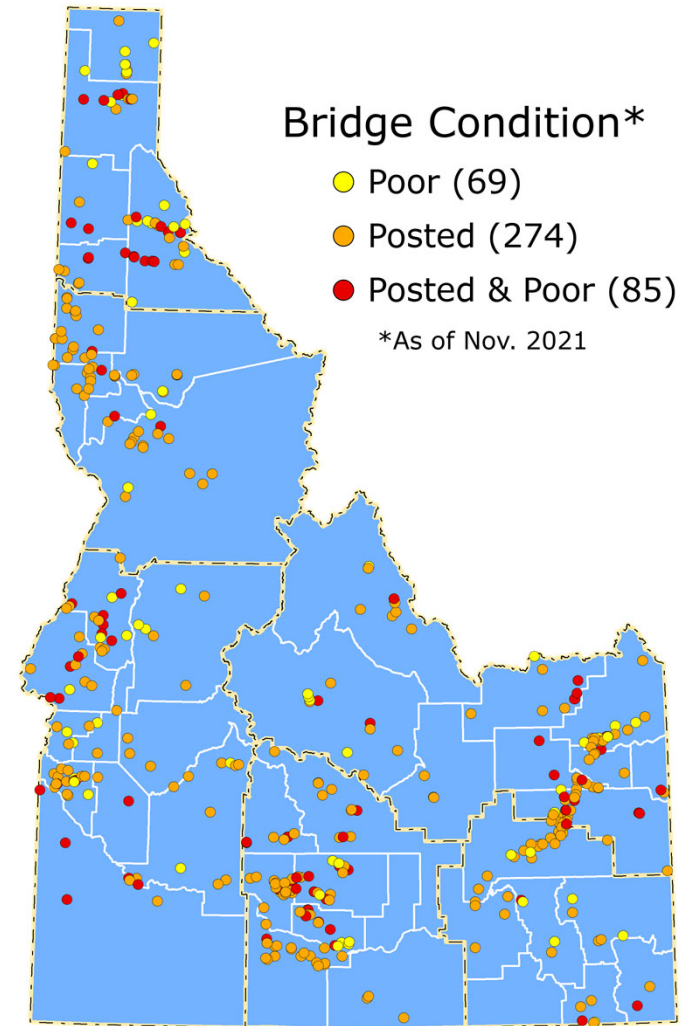
Good	9	Excellent Condition
	8	Very Good
	7	Good
Fair	6	Satisfactory
	5	Fair
Poor	4	Poor
	3	Serious Condition
	2	Critical Condition
	1	Imminent Failure
	0	Failed



Current Conditions

14.5% posted or closed

3% in poor condition



Advocate | Support | Train

Current Bridge Federal Funding

Program	FY21 Total
Inspection	\$1.9 M
Local Bridge	\$5.0 M
Off-System Bridge	\$2.0 M

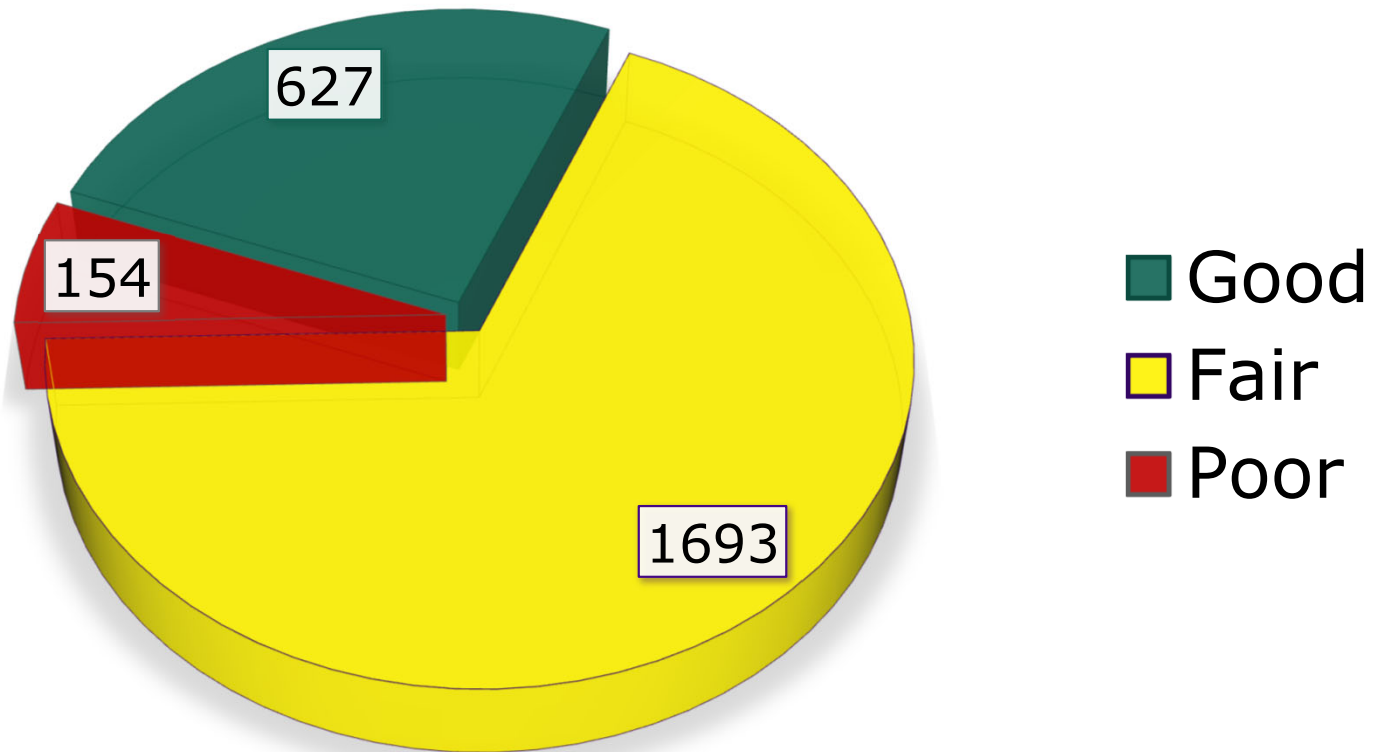
1-2 Bridges per year

Not increased in 10 years



Advocate | Support | Train

BRIDGE CONDITION



Advocate | Support | Train

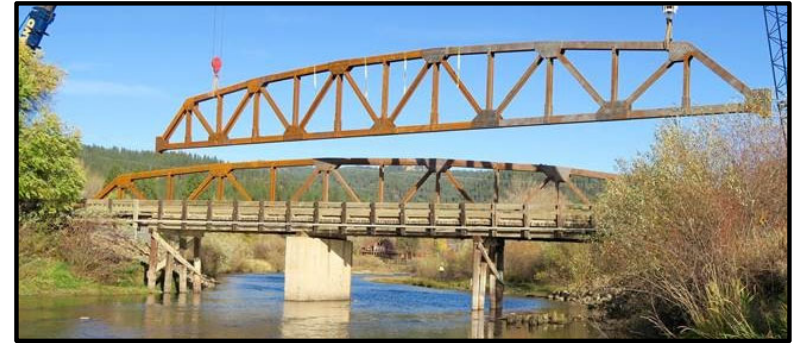


Local Bridge Needs

Condition*	# of Bridges*	Est. Cost to Repair or Replace†
Poor	69	\$129M
Posted	274	\$348M
Posted & Poor	85	\$125M
TOTAL	428	\$600M

*As of November 2021

†Est. 2021 dollars



LHTAC Innovations

- Bridge Bundling
- Innovative Construction Techniques
- Effective Maintenance
- Modern Design



Advocate | Support | Train

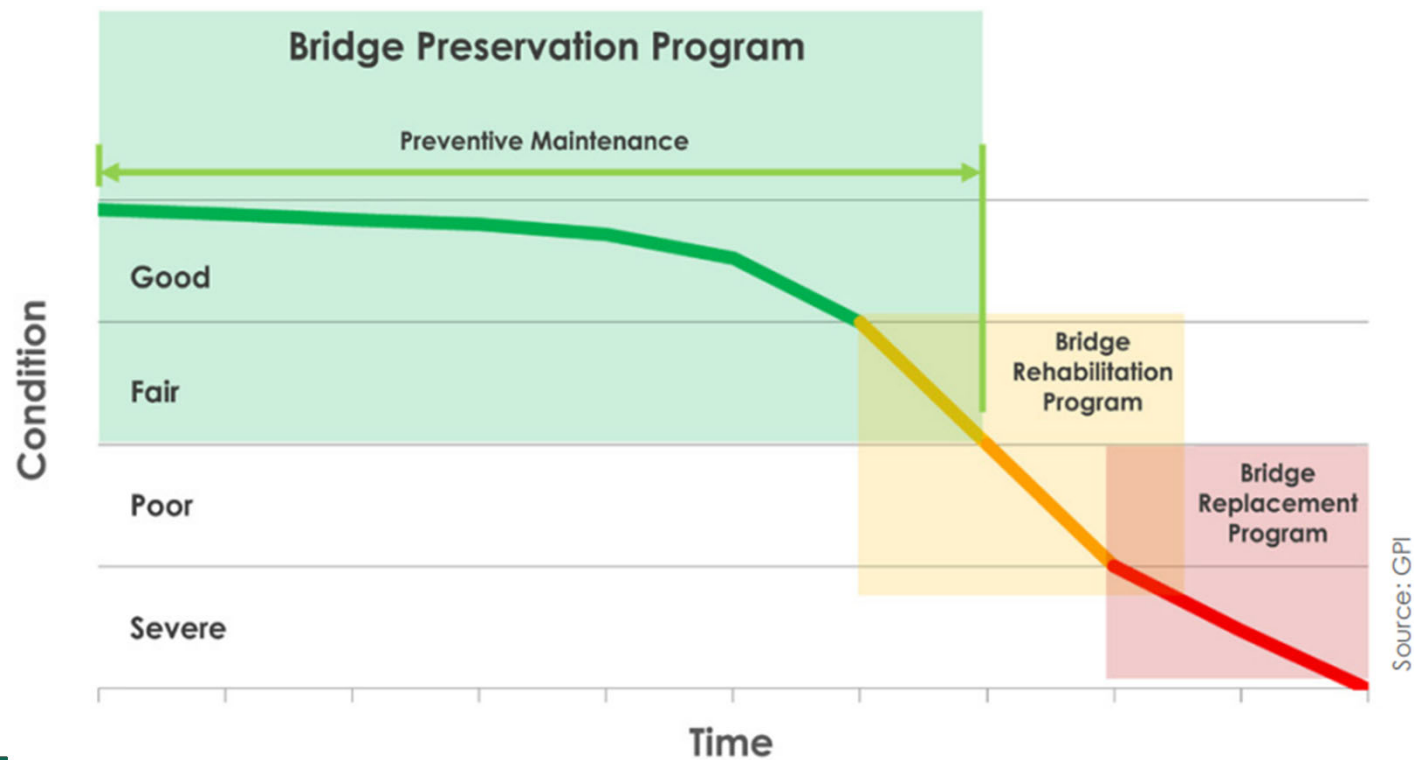


Questions?

Lkral@LHTAC.org
LHTAC.org
(208) 344-0565



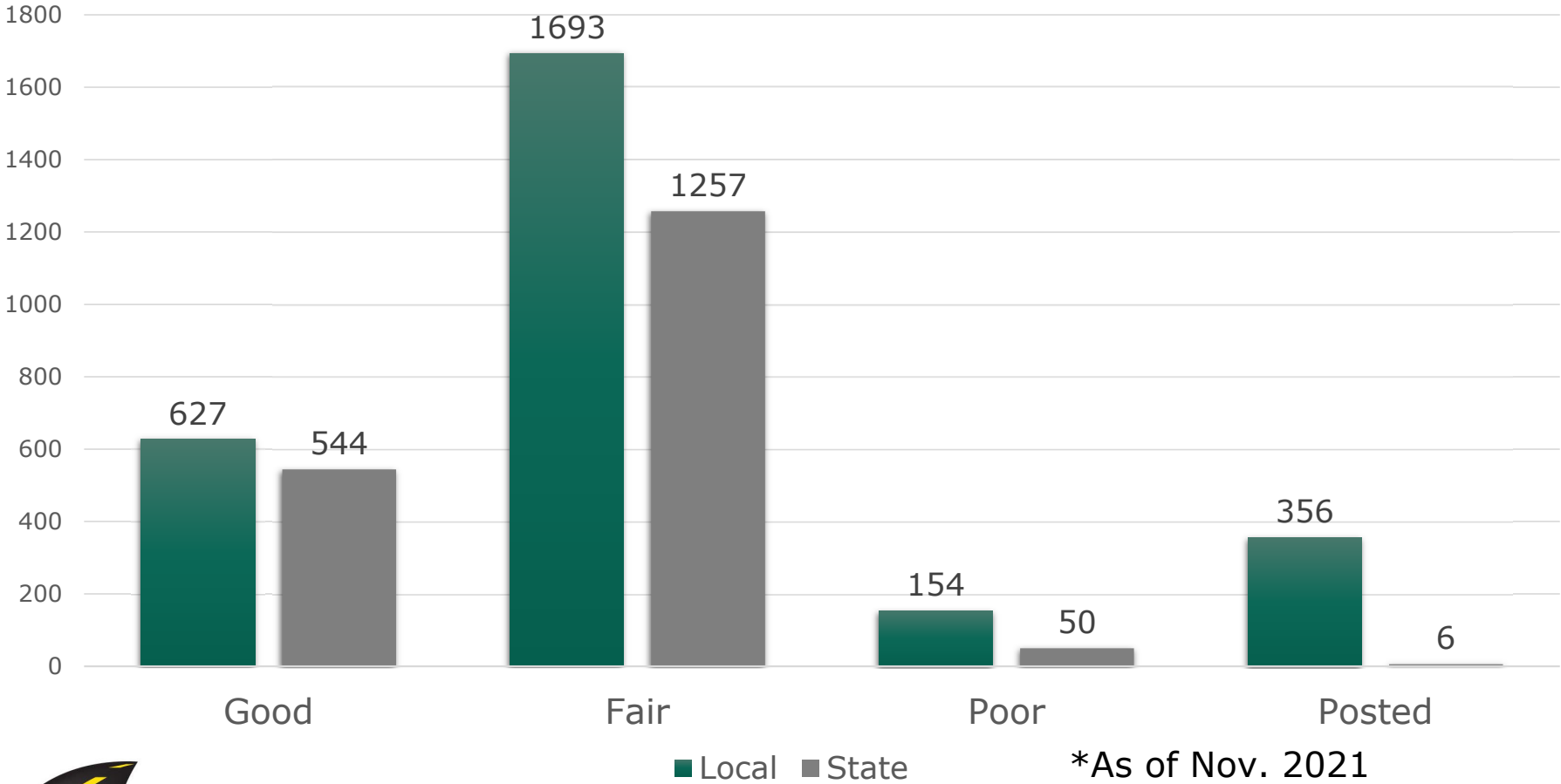
Bridge Treatment Life Cycle



Advocate | Support | Train



Idaho Bridge Condition*



Advocate | Support | Train

