


2022 JFAC Presentation



1

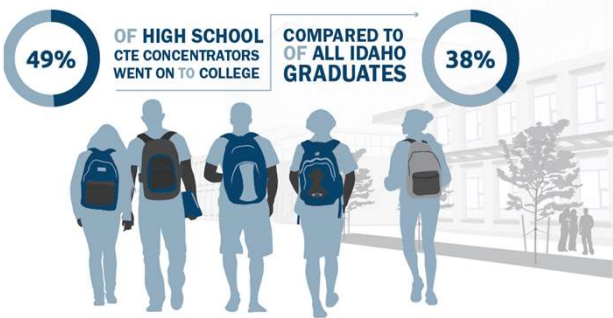
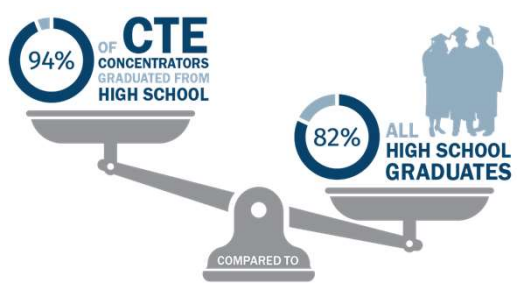
Our mission:

To prepare Idaho’s youth and adults for high-skill, in-demand careers.



2

Secondary highlights

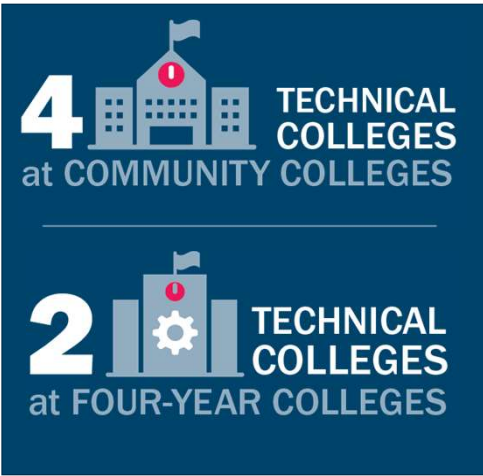


Source: IDCTE 2020/2021 Annual Report



3

Postsecondary highlights



Source: IDCTE 2020/2021 Annual Report



4

FY 2022 Approved Line Items (LBB 1-107-1-108)

- Fire Service Training
(transferred from the College of Eastern Idaho to IDCTE)
- Governor Little's Building Idaho's Future Grants



5

FY 2022 Supplementals (LBB 1-107-1-108)

1. Fire Service Training – Shift to PC
2. InSpIRE Ready! Program – Shift to PC
3. Perkins Grant Coordinator – Shift to PC
4. Perkins Student Leadership – Shift to PC
5. Federal Programs – Program Transfer



6

FY 2022 Supplemental (LBB 1-108)

6. Leading Idaho: CTE Program Expansion and Support

a. CTE Data Management System	\$1,500,000
b. Program Expansion and Modernization Grants	\$3,000,000
c. Program Alignment	\$500,000
d. Secondary Program Added Cost	<u>\$5,000,000</u>
Total investment	\$10,000,000



7

FY 2023 Line-Item Request (LBB 1-110)

1. Added Costs, Program Growth



8

**FY 2023 Line-Item Request
(LBB 1-110)**

**2. Quality Program
Grant Expansion**



9

**FY 2023 Line-Item Request
(LBB 1-110)**

3. Program Quality Support



10

**FY 2023 Line-Item Request
(LBB 1-111)**

4. Postsecondary
Program Support



11

**FY 2023 Line-Item Request
(LBB 1-110)**

5. Federal Apprenticeship
Grant



12

FY 2023 Line-Item Request (LBB 1-110)

6. Luma Appropriation Realignment



13



Questions?

Clay Long, Ph. D

Clay.long@cte.idaho.gov | 208-429-5530 | cte.idaho.gov

14