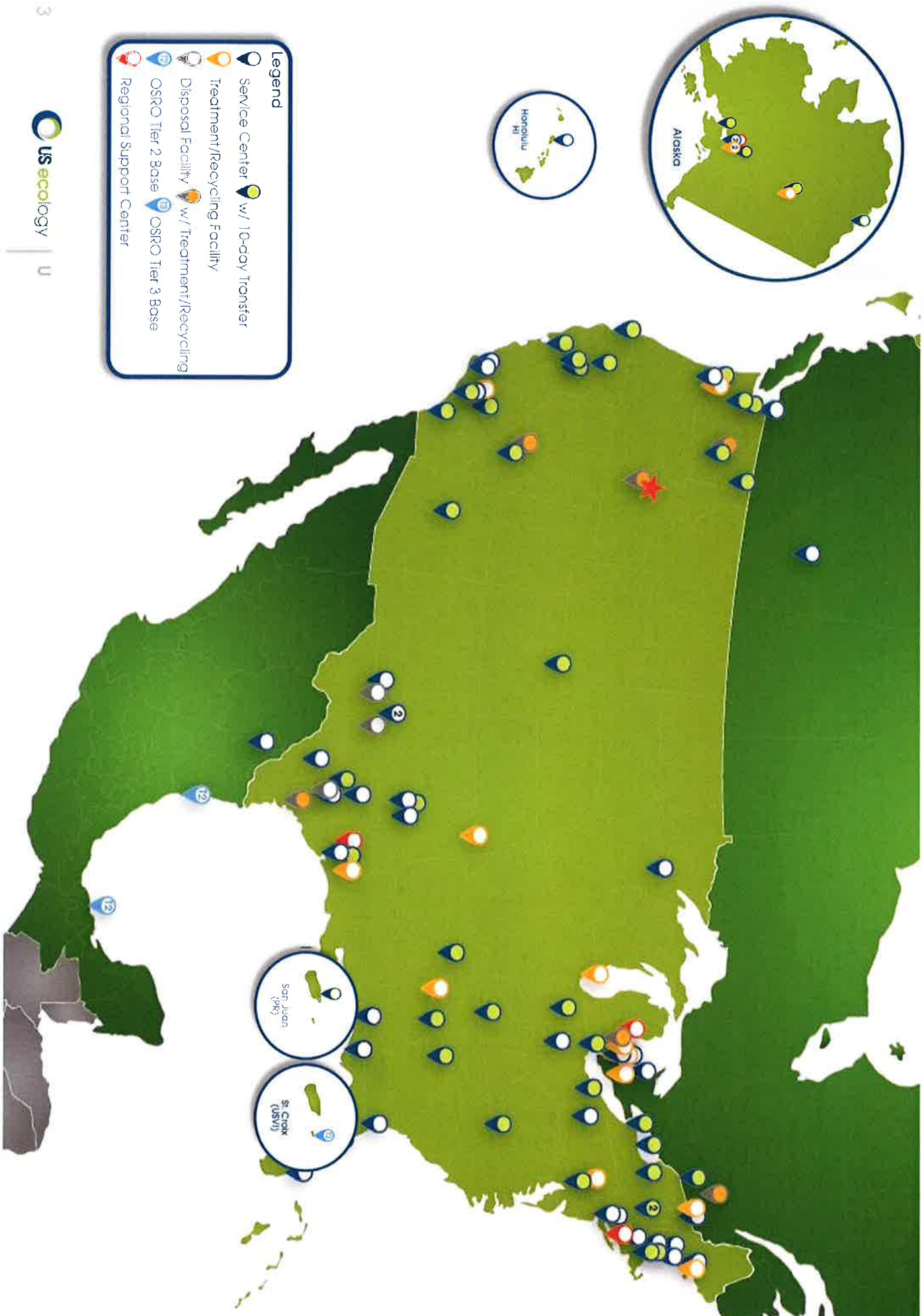




Idaho Legislative Update

February 16, 2022

North American Environmental Services Leader



FULL SERVICE PLATFORM

Our Platform & Strategy

- ✓ Customer-Centric Approach
- ✓ National Treatment, Storage and Disposal (“TSD”) Footprint
- ✓ Broad Set of Environmental Service Solutions
- ✓ Emphasis on Solving Customer Needs



Waste Solutions Segment

Treatment, disposal, beneficial re-use and recycling of hazardous, non-hazardous, radioactive and other specialty waste



Over 42K specialty waste profiles approved into our facilities in 2020



Manage 3B pounds of specialty waste including ≈900K drums and other containers



Hazardous Waste Landfill



Radioactive Waste Landfill



Solids / Wastewater Treatment



Beneficial Re-Use



Solvent Recycling



High Value Recycling

Differentiation

- Difficult to replicate permitted facility infrastructure
- Co-located landfill and treatment
- Surge Capacity
- Disposal capabilities in every major industrial center
- Customer service
- Regulatory expertise
- Complementary field services

Macro Drivers

- Mfg. production
- Environmental regulations
- Regulatory enforcement
- Env. sustainability initiatives
- Outsourcing
- Brownfield activity

Growth Initiatives

- Growth capex expanding waste and facility infrastructure
- Permit expansion
- Waste infeed from Field Services

Field Services Segment

Logistics and response solutions focusing on in-field service offerings

Logistics Solutions - Characterization, packaging, collection and compliance solutions for specialty waste at customer sites and through our 10-day transfer facilities



Retail technicians covered 873K miles, with 52K stops in 2020 at approx. 25K customer locations



TWM manages waste & recycling needs at over 1,800 customer locations

Small Quantity Generation ("SQG") Solutions

Retail



LTL Logistics



Lab Pack



Total Waste Management ("TWM")



Transportation



Compliance



Differentiation

- Coast-to-coast Field Services network of 88 service centers (39 Permitted 10-days)
- Leverage Waste Solutions for internalization
- Manage waste into third party disposal partners
- Among the top providers of Retail and TWM
- Technology investments in A.I. retail waste identification
- Next generation lab pack technology platform

Macro Drivers

- Industrial production
- Consumer spending
- Environmental regulations
- Env. sustainability initiatives
- Outsourcing
- Regulatory enforcement

Growth Initiatives

- Cross-selling services across larger network
- Growth capex expanding capabilities across network
- Smarter Sorting
- Partnership in Retail
- New lab pack platform

Field Services Segment *(Continued)*

Response Solutions - Customer critical emergency and spill response, in-plant maintenance and remediation



Over 12,800 ER and spill responses managed in 2020



Fleet of 20 dedicated, specialized spill response vessels to meet customers' OPA-90 needs

Emergency Response



OSRO / Standby



High Haz Response



Industrial Services



Remediation



Transportation



Differentiation

- National emergency response leader
- Hazmat and compliance expertise
- Certified OPA-90 OSRO provider (1 of 2 in U.S.)
- Premier provider of high hazard response
- 24/7 national incident response center
- Ability to self-respond coast to coast
- Cradle-to-grave capabilities through to disposal

Macro Drivers

- Industrial production
- Consumer spending
- Environmental regulations
- Env. sustainability initiatives
- Outsourcing
- Regulatory enforcement

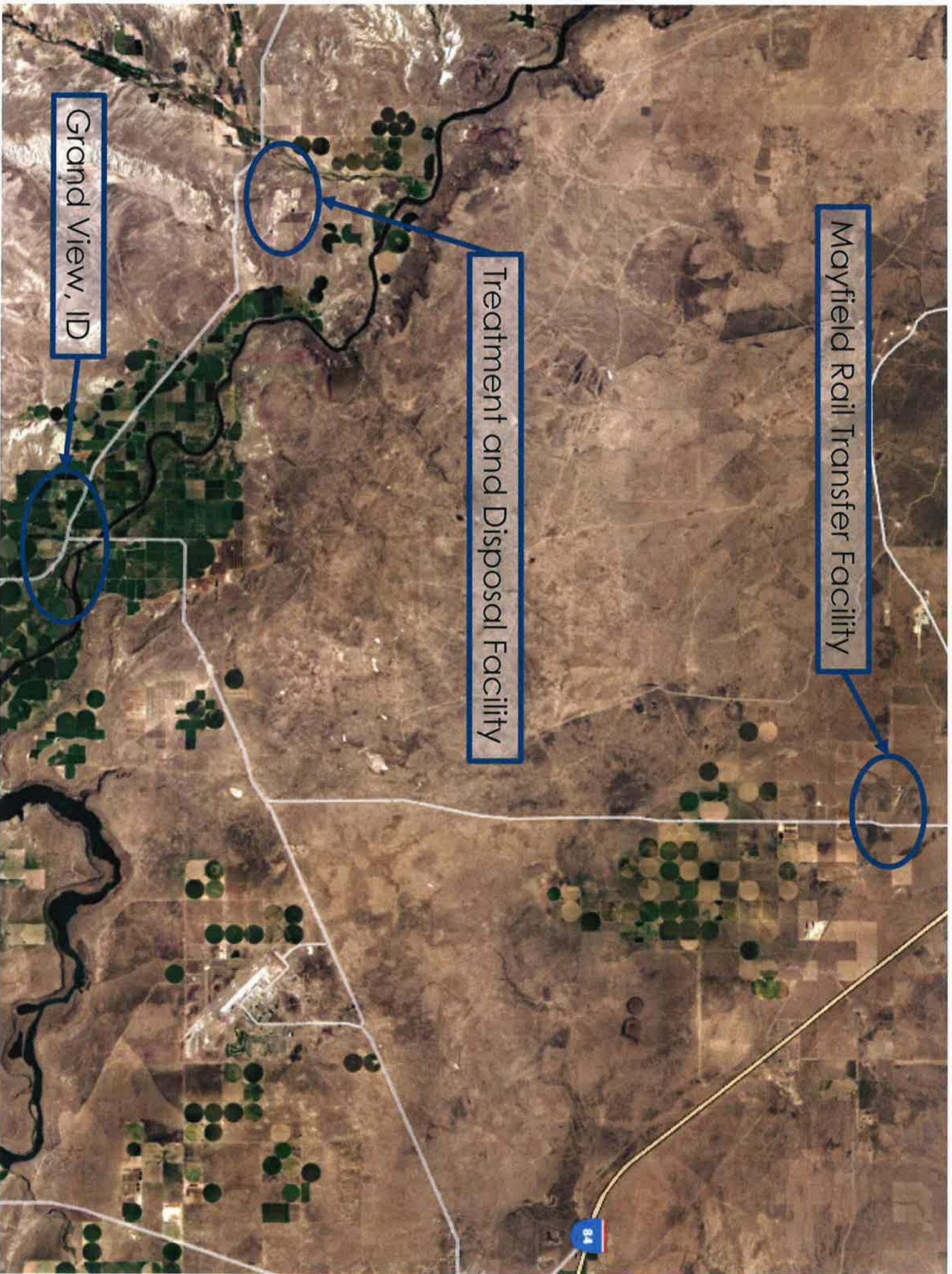
Growth Initiatives

- Cross-selling services across larger network
- Growth capex expanding capabilities across network



US Ecology Idaho Operations

Overview



Mayfield Rail Transfer Facility

Treatment and Disposal Facility

Grand View, ID

Capital Investment

Significant Infrastructure Investment



Employs approximately 50 people in Grand View & Mayfield



Budgeted \$9 million dollar capital investment in 2022

US Ecology Idaho Capital Investment



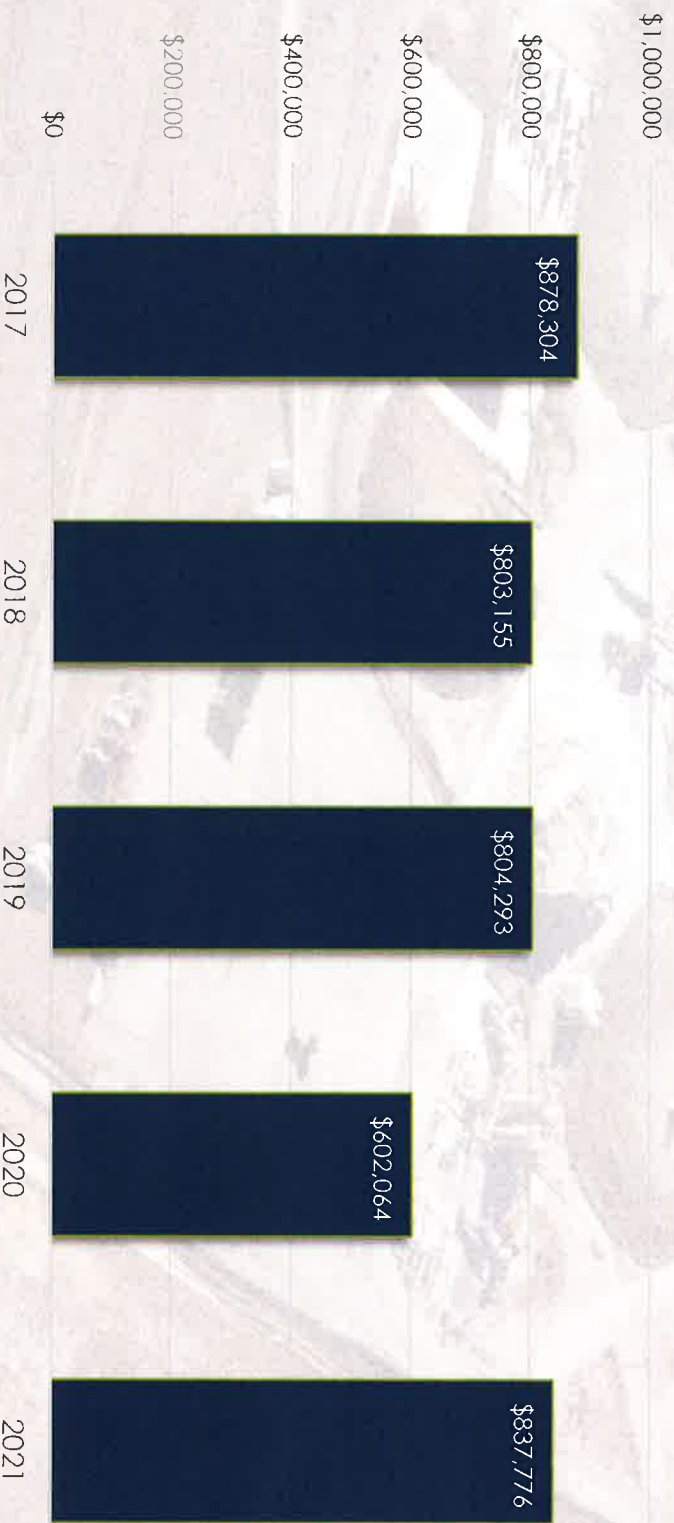
Tipping Fees paid to the State

Tipping fees paid are paid into the State General Fund



Portion of tipping fee to County to maintain Simco Road

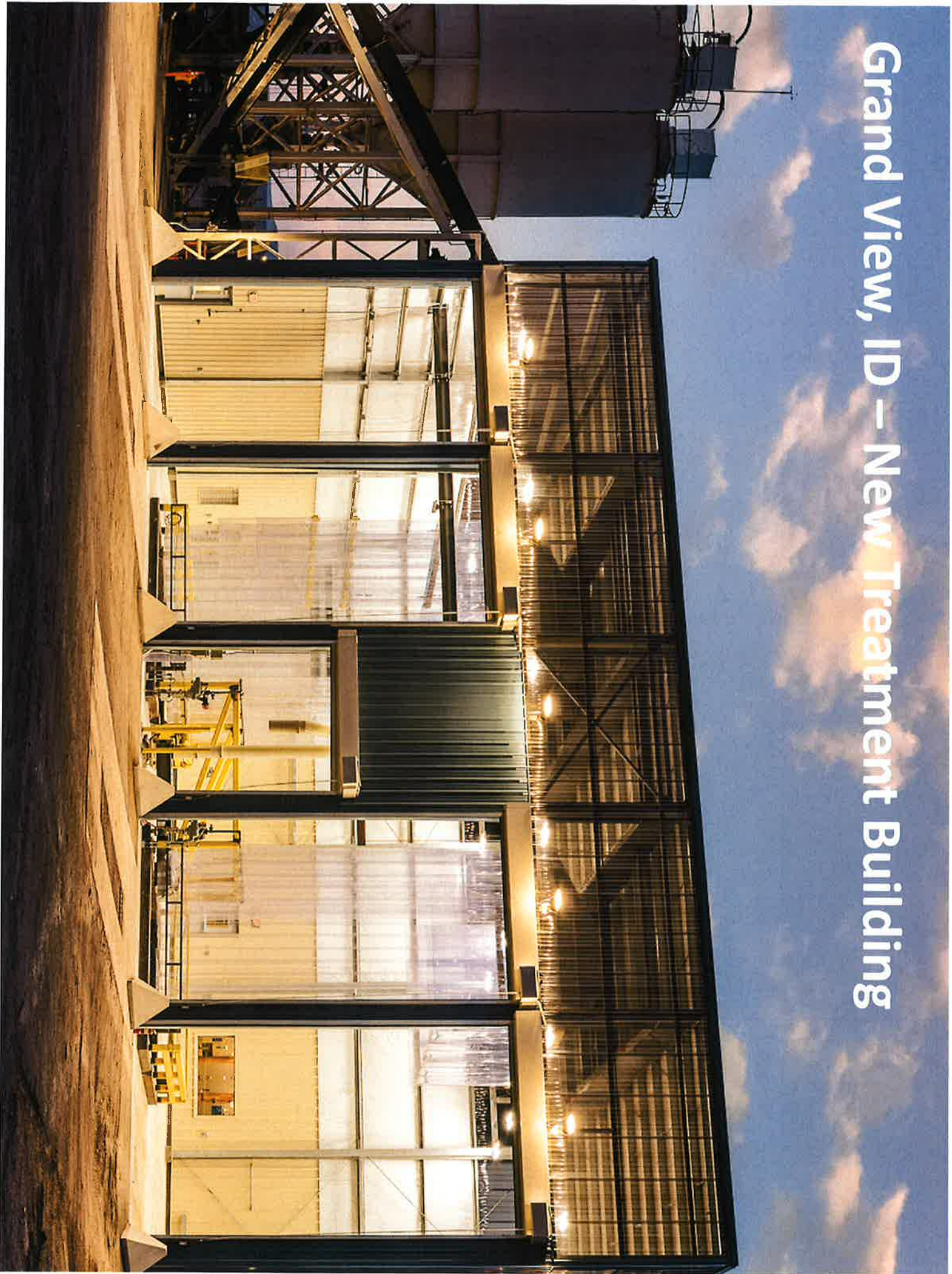
US Ecology Idaho Tipping Fees



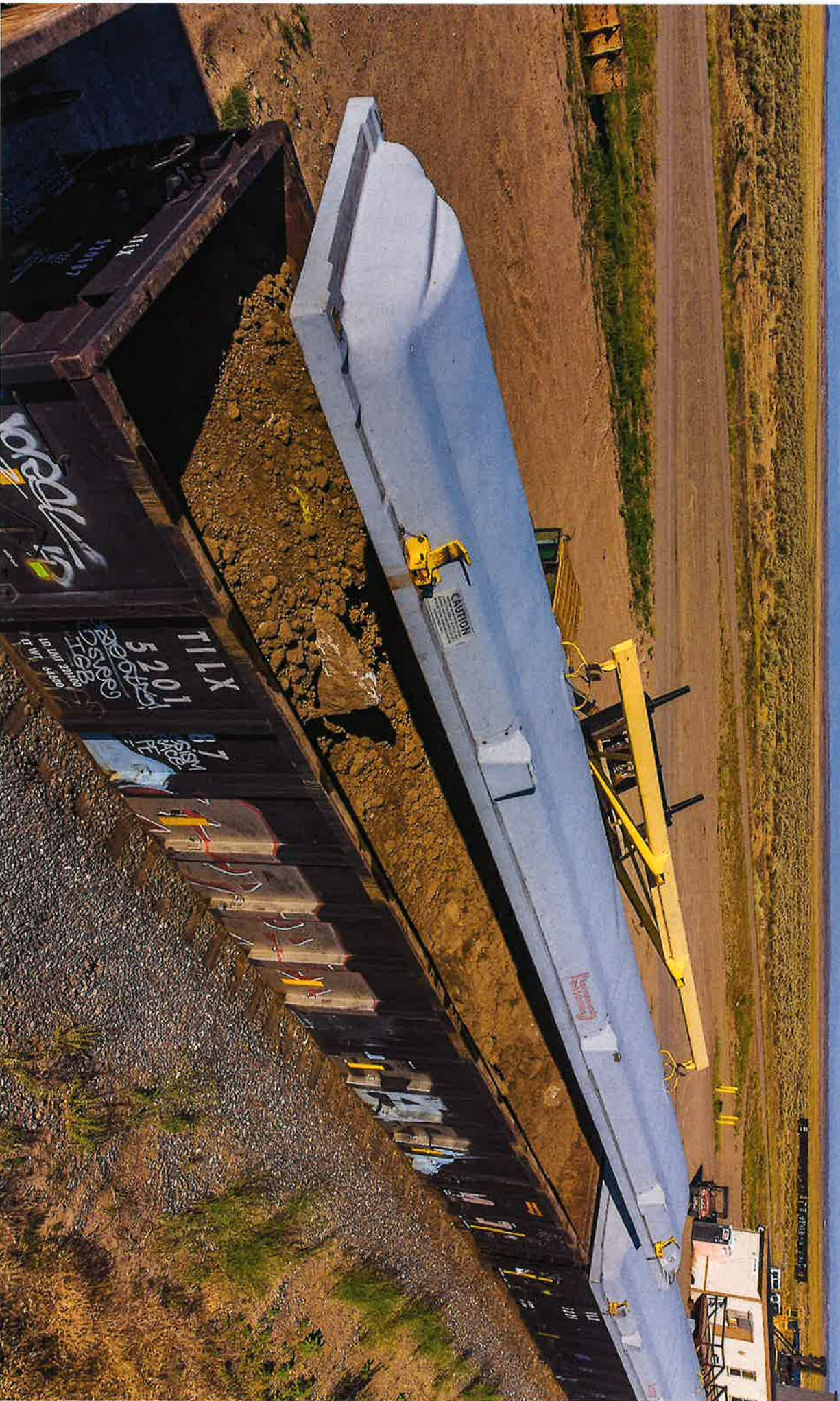
Grand View, ID - Treatment and Disposal Facility



Grand View, ID – New Treatment Building



Mayfield, ID -- Rail Transfer Operation



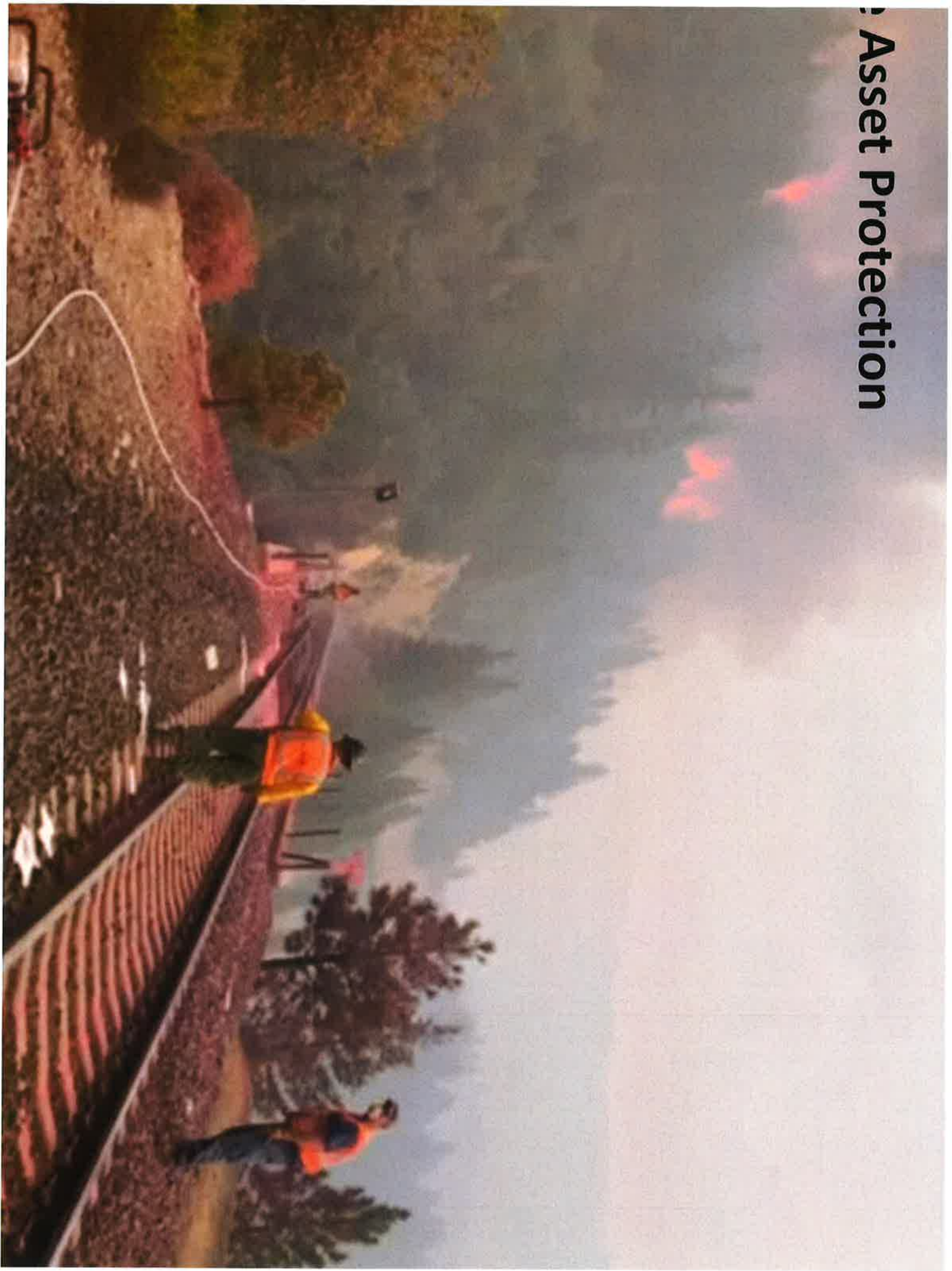
Retail Services



Emergency Response Services



Asset Protection





US **ecology**SM

Unequaled service. Solutions you can trust.

Thank You