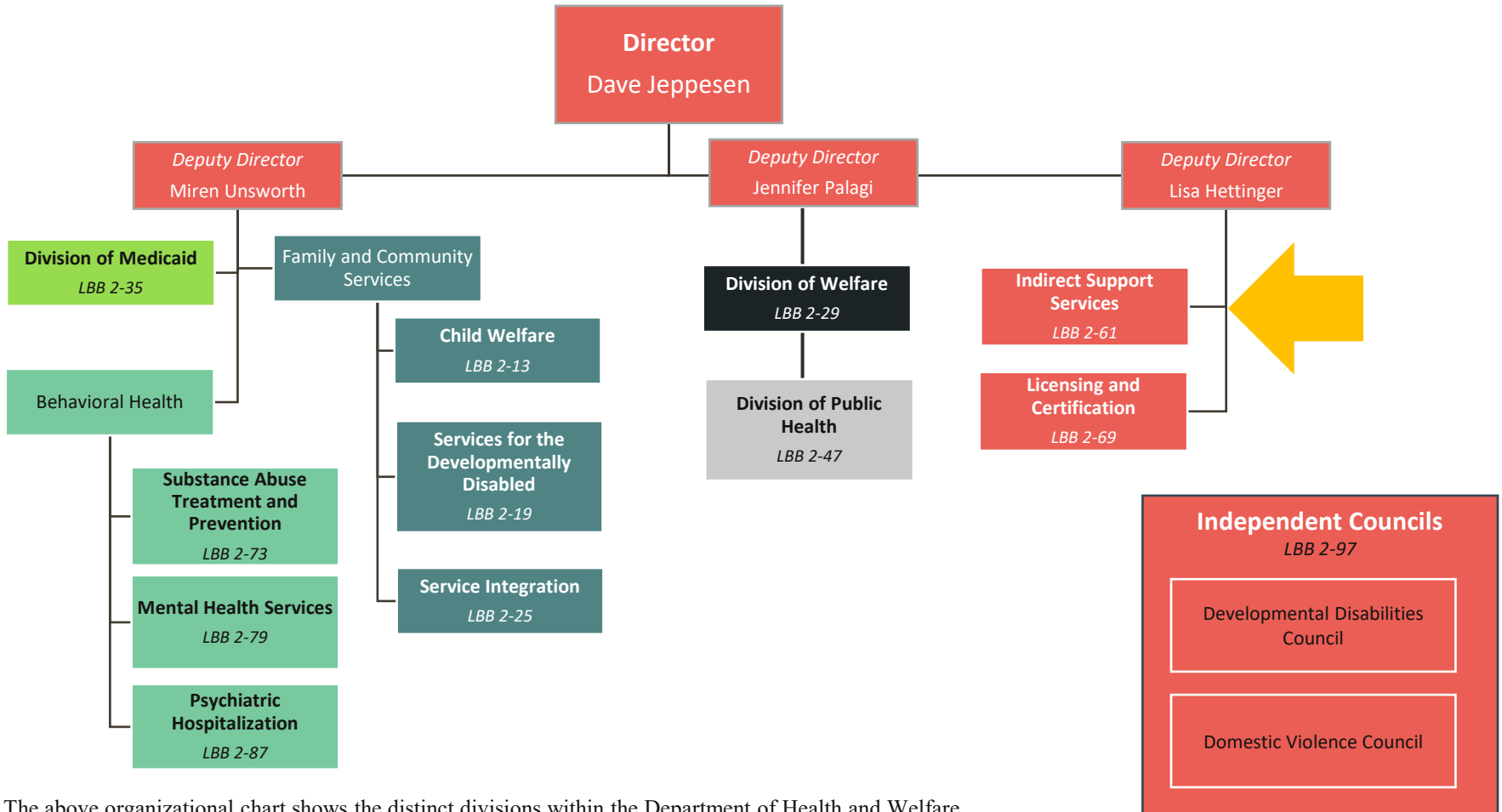




Agency Summary & Statutory Authority

The Idaho Department of Health and Welfare provides services and regulatory programs in partnership with taxpayers, consumers, and providers to promote economic well-being, support vulnerable children and adults, enhance public health, and encourage self-sufficiency. [Chapter 10, Title 56, Idaho Code]



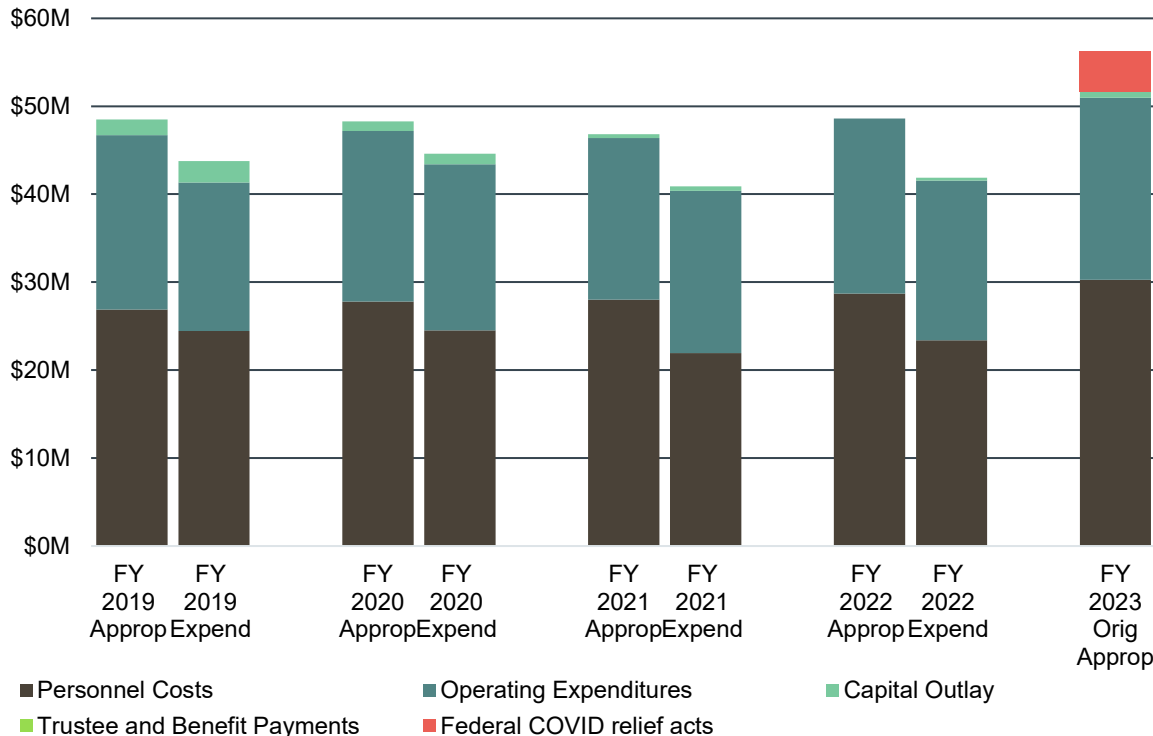
The above organizational chart shows the distinct divisions within the Department of Health and Welfare grouped by how they have traditionally appeared in appropriation bills together. All of the same shade appear in the same appropriation bill.



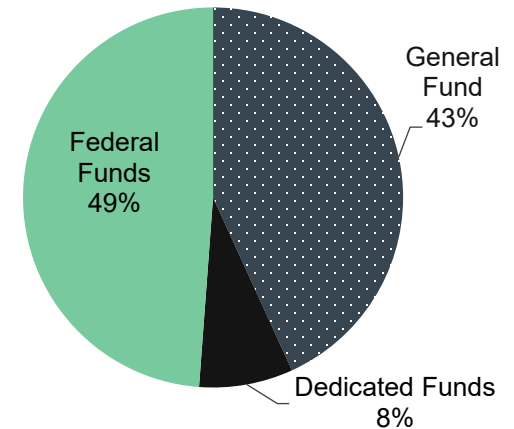
Agency Summary & Statutory Authority

Indirect Support Services provides administrative functions for the Department of Health and Welfare: (1) Office of the Director provides central policy direction; (2) Office of Legal Services provides legal advice, monitoring, and litigation services; (3) Office of Human Resources provides human resource functions, which include civil rights, workforce development, recruitment, process and system research, and employee relations; (4) Division of Information Systems plans and operates all data processing and IT activities; and (5) Division of Management Services, which contains three bureaus: (a) Bureau of Financial Services manages the budget and cash flow, controls the accounting and reporting process, performs internal reviews, and processes all personnel actions; (b) Bureau of Compliance provides support to the department's public assistance programs through the following units: (i) Criminal History; (ii) Internal Audit; (iii) Fraud Analysis; (iv) Medicaid Program Integrity; and (v) Welfare Fraud Investigations; and (c) Bureau of Operational Services manages physical assets, contracts, and purchasing.

Total Appropriation and Actual Expenditures



4 year Average Total Expenditures



Indirect Support Services Average Vacancy Rates

Fiscal Year	Authorized	Filled	Vacant	Percent
FY 2019	300.52	285.82	14.70	4.9%
FY 2020	300.60	279.23	21.37	7.1%
FY 2021	292.68	253.57	39.12	13.3%
FY 2022	288.27	255.82	32.45	11.3%
FY 2023	287.60	257.30	30.30	10.5%

*FY 2023 includes data through December 2022