



# Idaho State Museum

## ***Designing for Impact***

Senate State Affairs Committee

March 18, 2019

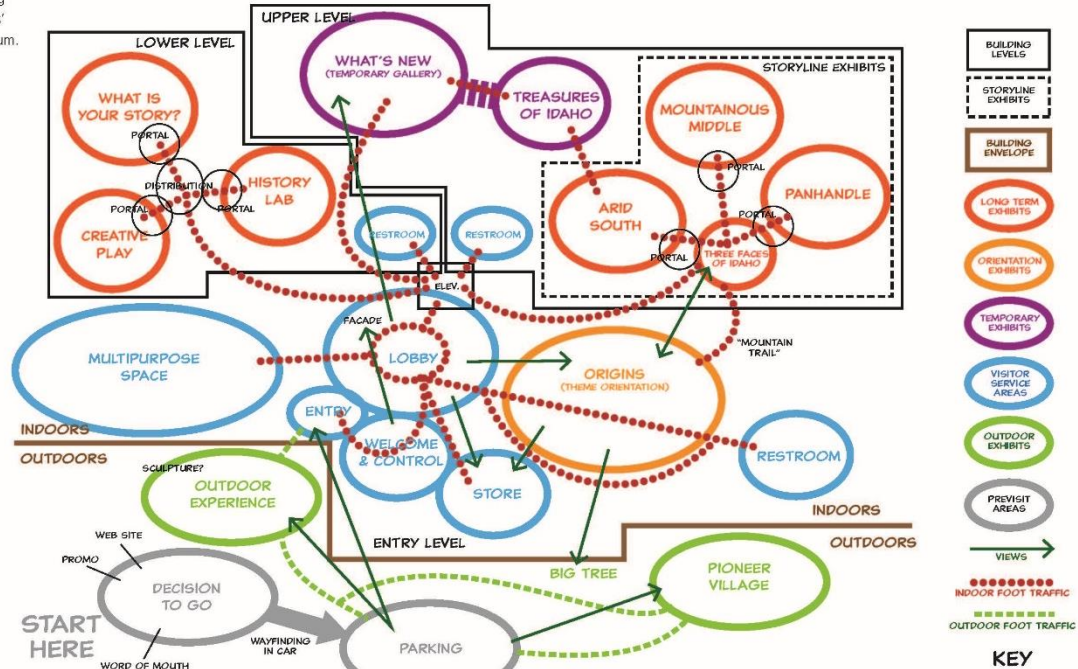




IDAHO STATE  
**HISTORICAL  
SOCIETY**

## VISITOR EXPERIENCE

This diagram shows visitor flow and relationships among the various aspects of visitors' experience in the new Museum.



OVERALL VISITOR EXPERIENCE DIAGRAM  
ANDREW MERRIELL & ASSOCIATES 11/25/2014



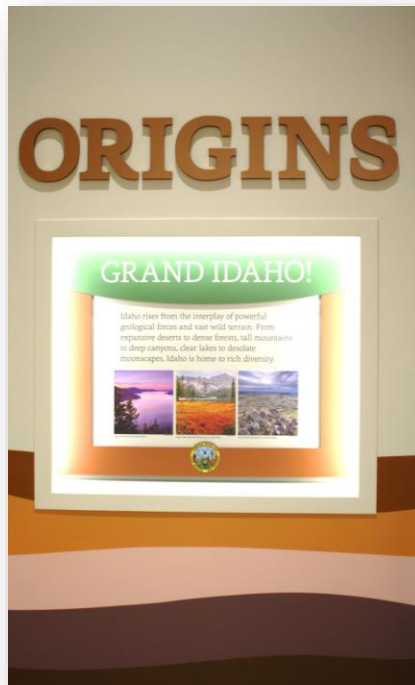
IDAHO STATE  
**HISTORICAL  
SOCIETY**



IDAHO STATE  
**HISTORICAL  
SOCIETY**





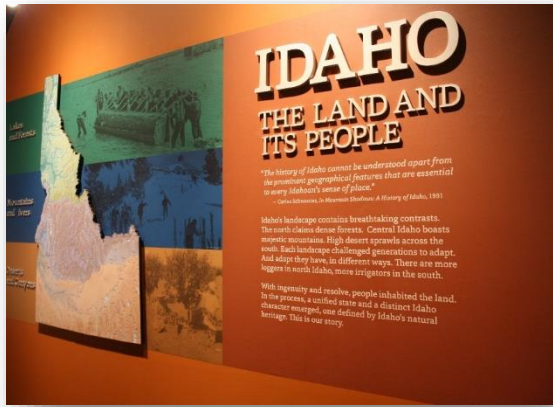


IDAHO STATE  
HISTORICAL  
SOCIETY



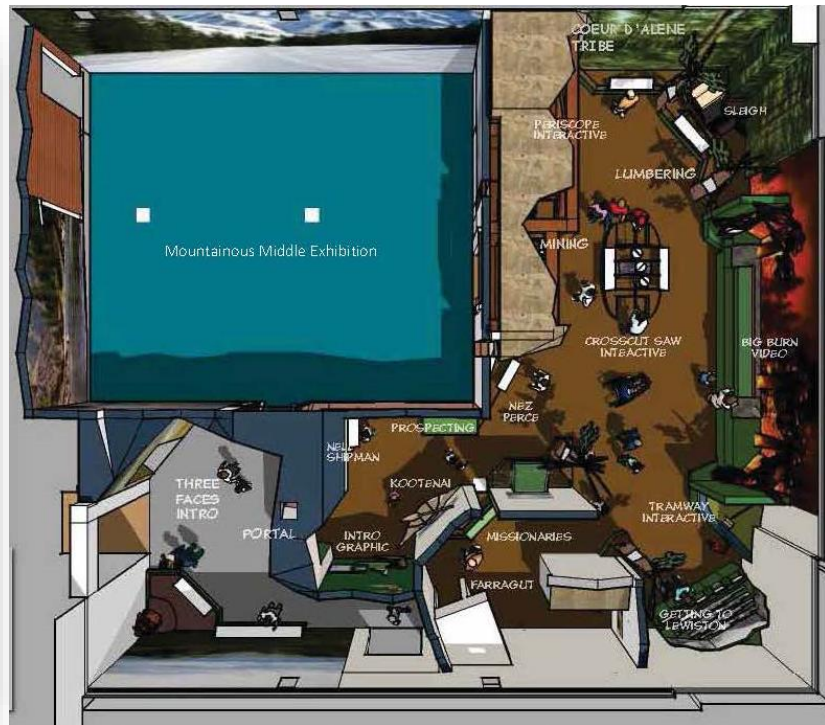




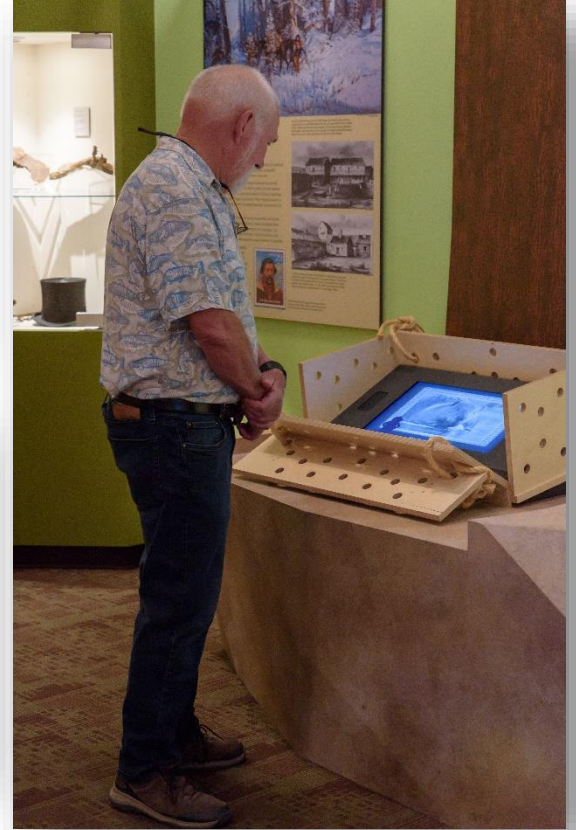


IDAHO STATE  
**HISTORICAL**  
**SOCIETY**





IDAHO STATE  
HISTORICAL  
SOCIETY

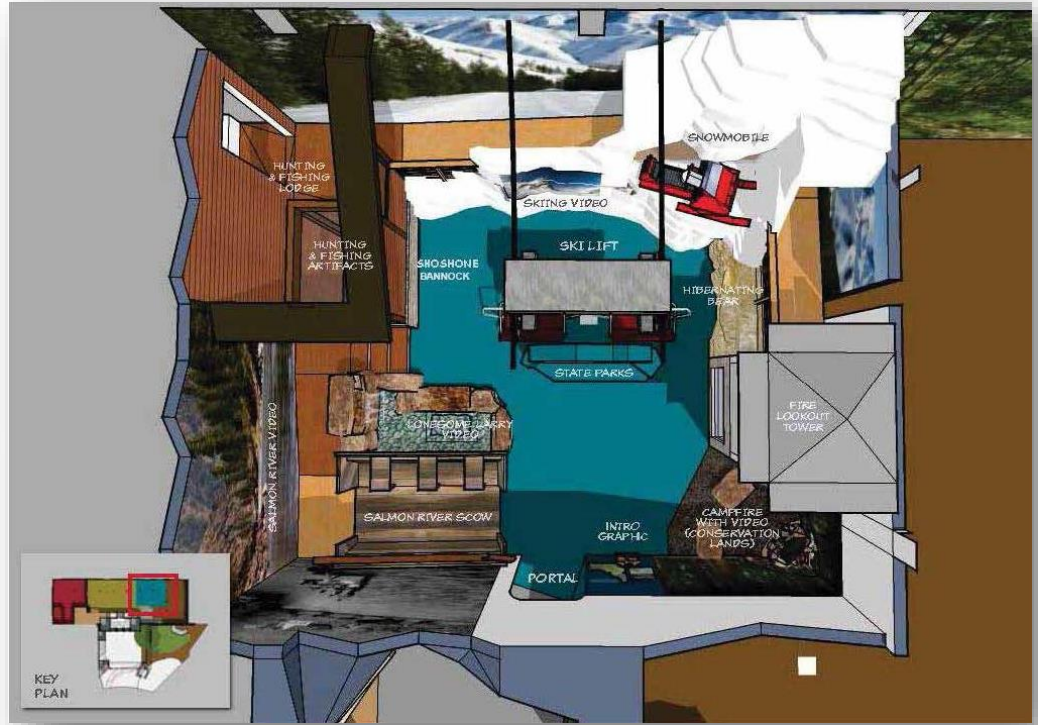


IDAHO STATE  
HISTORICAL  
SOCIETY









IDAHO STATE  
**HISTORICAL**  
**SOCIETY**



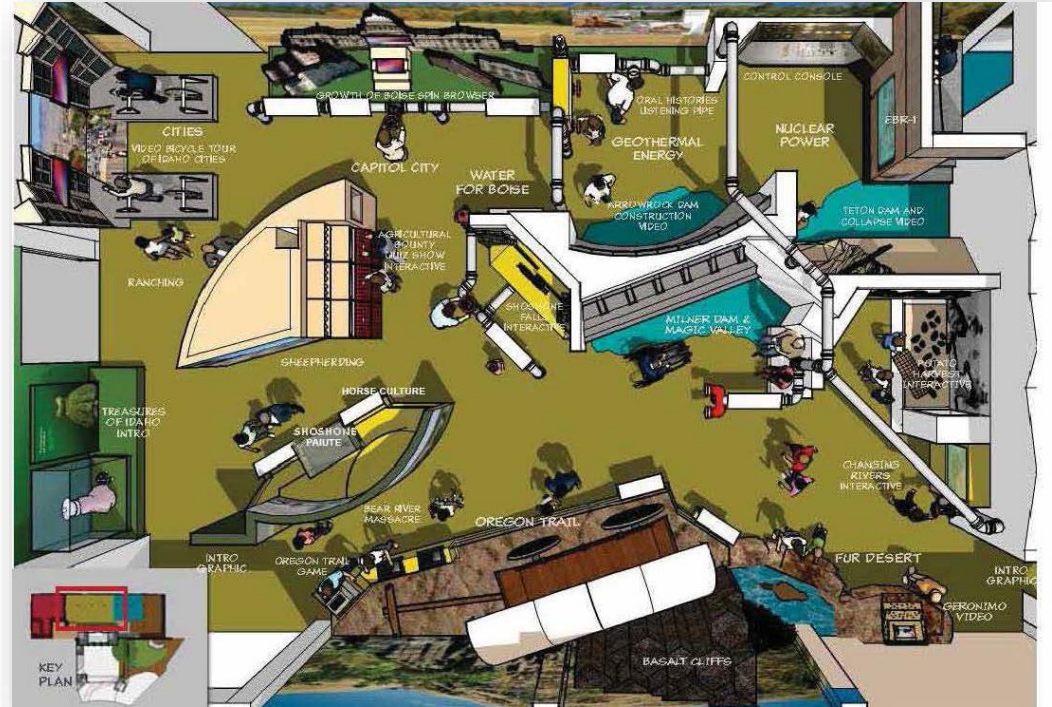
IDAHO STATE  
HISTORICAL  
SOCIETY





IDAHO STATE  
**HISTORICAL  
SOCIETY**











IDAHO STATE  
HISTORICAL  
SOCIETY

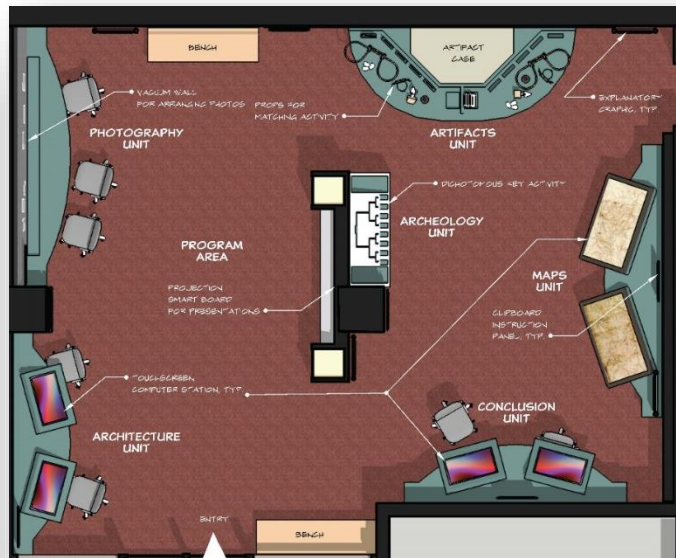






IDAHO STATE  
**HISTORICAL  
 SOCIETY**

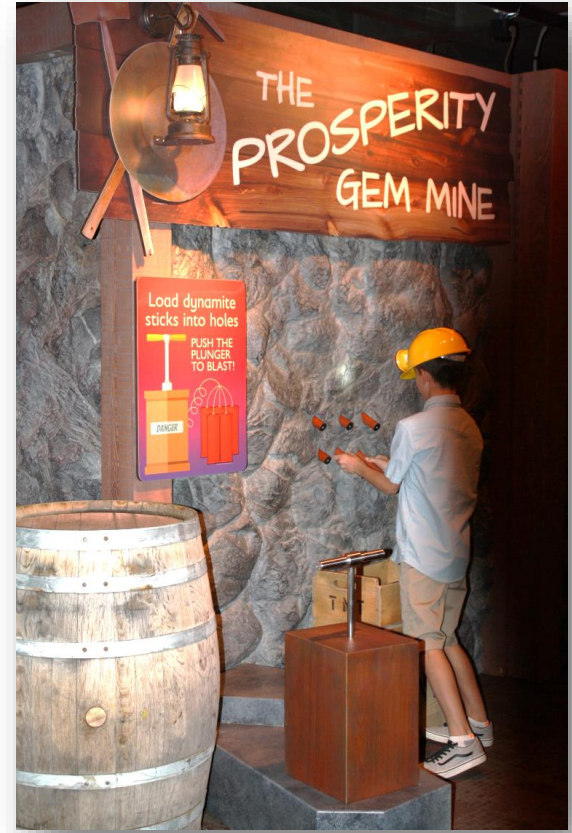




IDAHO STATE  
**HISTORICAL  
 SOCIETY**







IDAHO STATE  
HISTORICAL  
SOCIETY



# Governor Brad Little

## Janet L. Gallimore, Executive Director



### **Idaho State Historical Society Trustees**

Don Pischner, District 1, Coeur d'Alene

Earl Bennett, District 2, Genesee

Bill Butticci, Chair, District 3, Emmett

Ernest Hoidal, District 4, Boise

Paul Smith, District 5, Twin Falls

Jim Johnston, District 6, Pocatello

Hope Benedict, District 7, Salmon

### **Affiliate Boards**

Archaeological Survey of Idaho Board

Foundation for Idaho History

Franklin Pioneer Association & the City of Franklin

Friends of the Bishops' House

Friends of Stricker Ranch, Hansen, ID

Governor's Lewis and Clark Trail Committee

Historic Sites Review Board

Idaho Geographic Names Advisory Council

J. Howard Bradbury Logging Museum & the City of Pierce

State Historical Records Advisory Board



IDAHO STATE  
**HISTORICAL**  
**SOCIETY**