



# *Idaho Legislature Briefing*



**February 17-18, 2021**





# Agenda

- // Introductions – Bayer Team
  - // James Curry – Government Affairs Lead, Northwest US
  - // Randy Vranes – Mineral Operations Business Unit Lead
  - // Roger Batt – Idaho Lobbyist
- // Soda Springs Site Introduction
- // Caldwell Canyon Mine
- // Ballard Mine
- // Question & Answer



# Soda Springs Operations



Ore Mining



Ore  
Beneficiation



P4  
Production



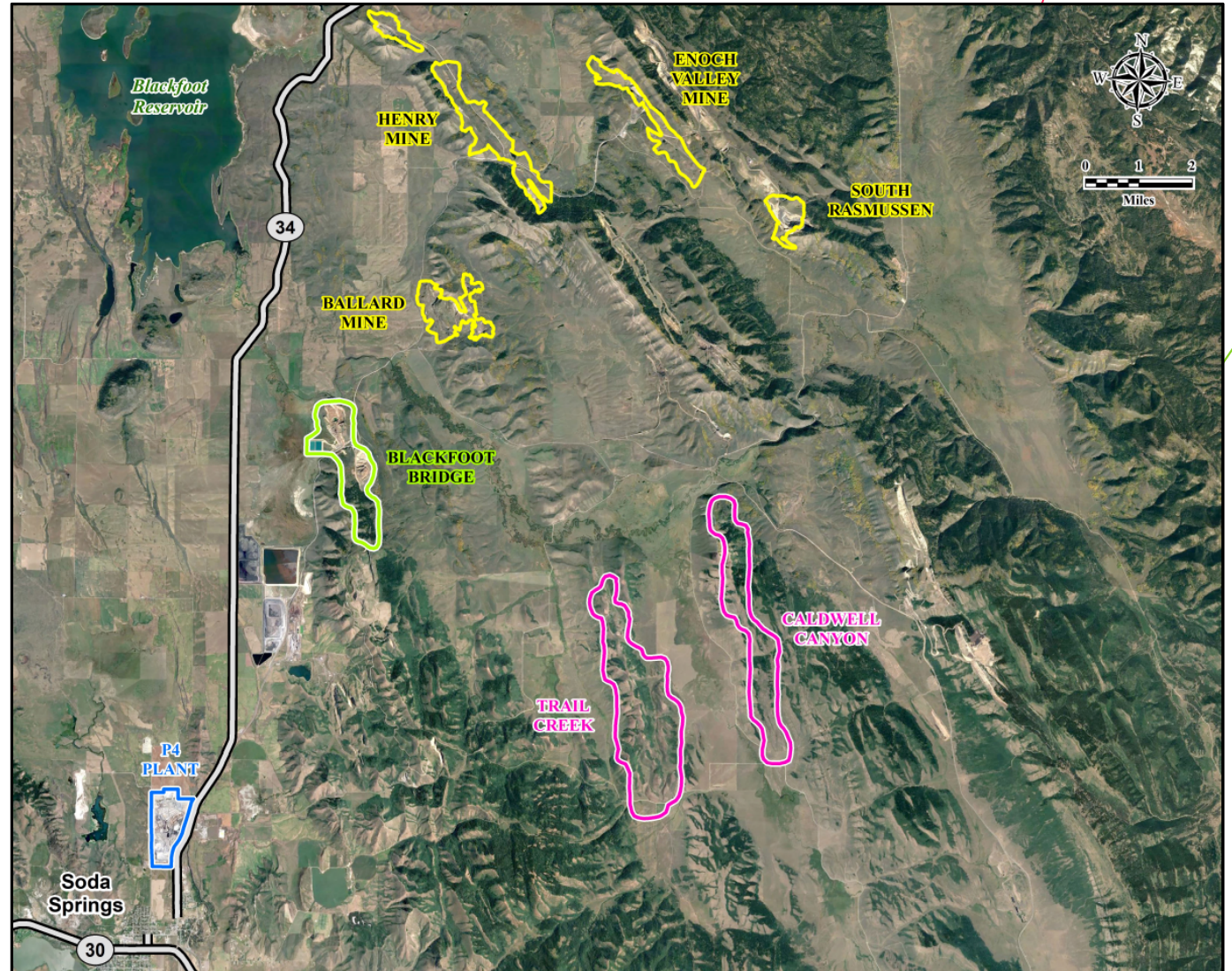
# Bayer's Soda Springs Community Impact

- // Site employs 800 people
  - // 200 at mine/quarry - all contractors
  - // 600 at plant – 400 Bayer employees
- // 2,200 jobs - indirect regional impact
- // \$49 M - total direct annual payroll
- // \$2 M - taxes paid (payroll and prop. taxes)
- // \$2.1 M - royalties paid
- // < \$400k – annual Idaho charitable giving





# P4 Production LLC Mine Locations





## Caldwell Canyon Mine Schedule

- // Permitting (NEPA) commenced - 2014 – 5 ½-year process
- // Approval (Record of Decision) received – September 2019
- // Mine development ; started in 2019, will be ongoing until 2024
- // End Result – Supply 45 million tons of ore -35 yrs Plant Operations





## Caldwell Canyon Mine Development/Construction

- // Mine Development Investment - \$328 M;  
spend to date - \$30 M
- // Employment - 100 additional persons  
employed over 5 years
- // Continuity – Preserves 600 jobs at plant and  
nearly 200 jobs at mine
- // **THANK YOU – Your support  
made this possible!!!**

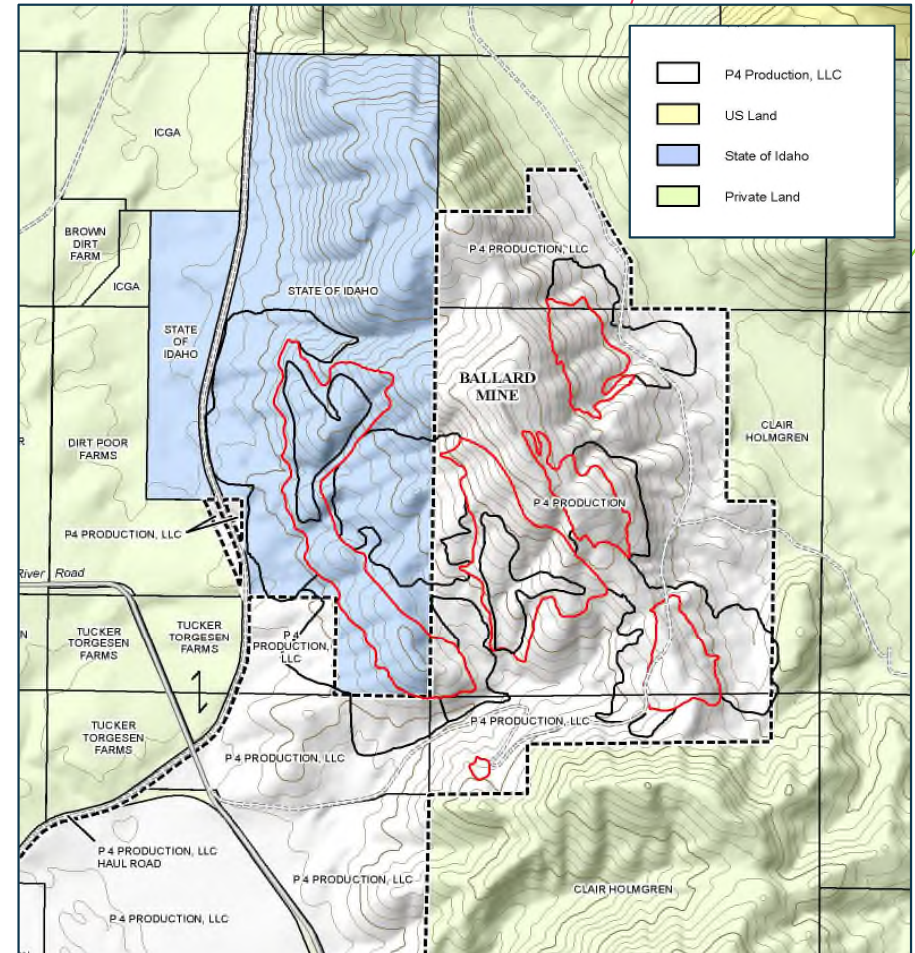
### Caldwell Project at a Glance

<b>16,100,000</b>	Material to be moved (tons)
<b>1550</b>	Area to be developed (acres)
<b>530,000</b>	Person hours to be worked (hours)
<b>8</b>	Roads to be constructed (miles)
<b>7</b>	Rail to be built (miles)
<b>5.5</b>	Regulatory approval (years)



## Ballard Mine Background

- // Mined from 1951 to 1969
- // 1.7 miles long, 1.5 mile wide
- // Land Ownership -state and private (P4) surface
- // Mineral Ownership - BLM
- // Project Area - 500 acres, 6 mine pits and 6 overburden piles
- // Recoverable Ore – Approx. 5 M tons
  - // 5 years plant total operations
- // Future Royalties - \$7.5M

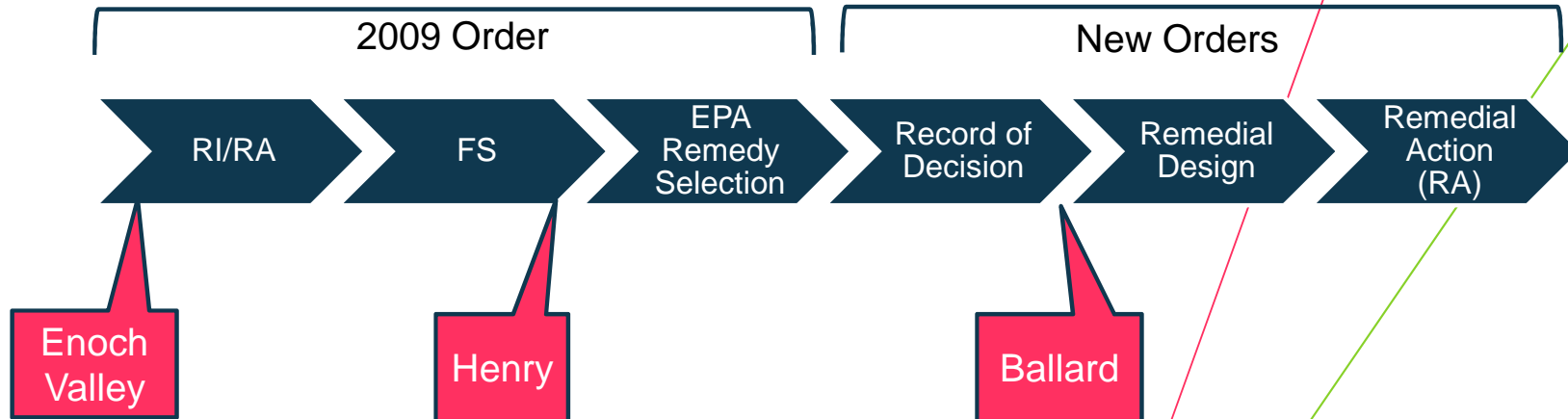






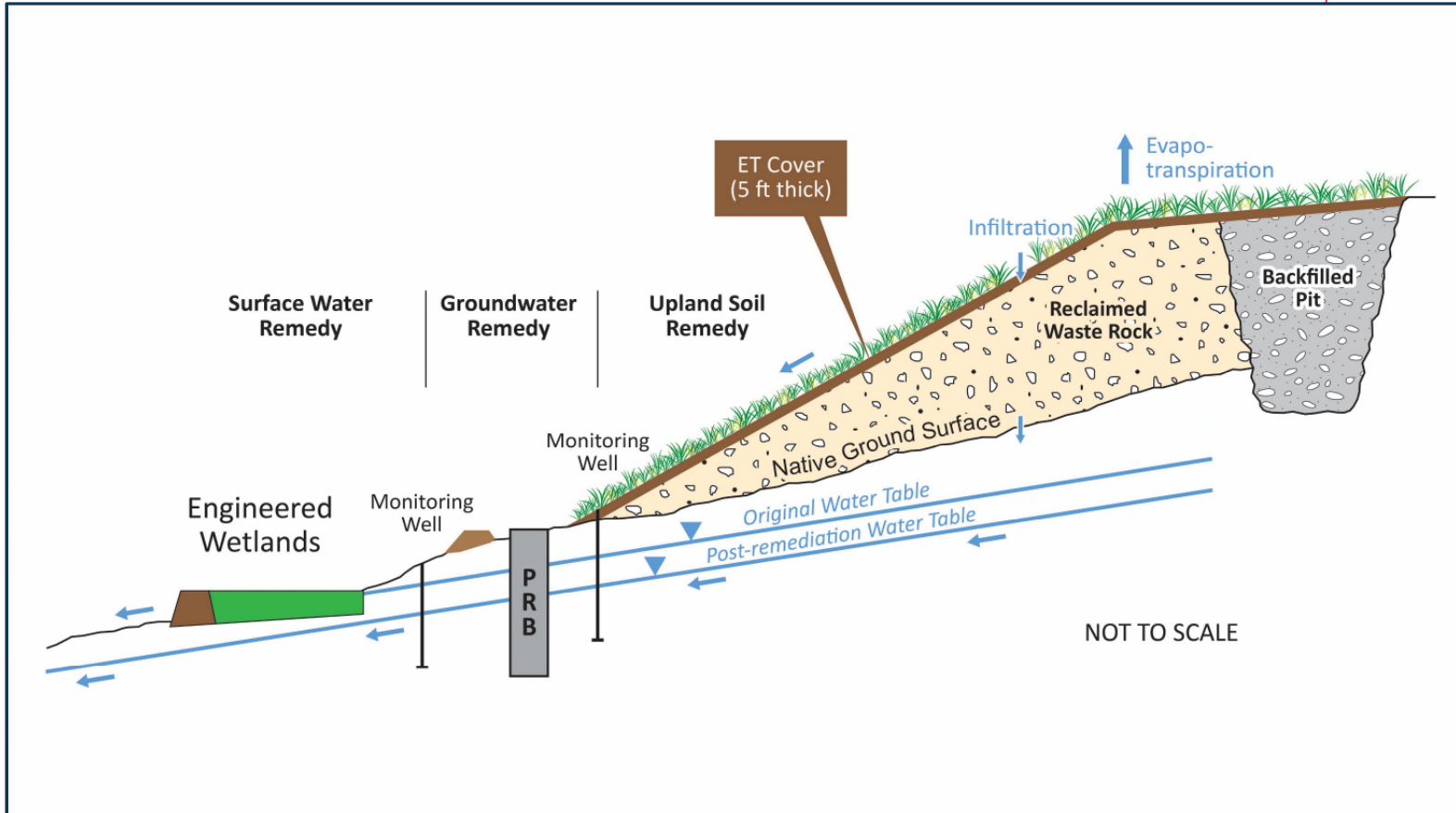
## Ballard Remediation Regulatory Process (CERCLA)

- // 2009 EPA order requires Remedial Investigation/Risk Assessment (RI/RA) and Feasibility Study (FS) for each legacy mine
- // Implemented from oldest to newest mine
- // **A final Consent Decree is necessary for Ballard to move into the remedial design phase**





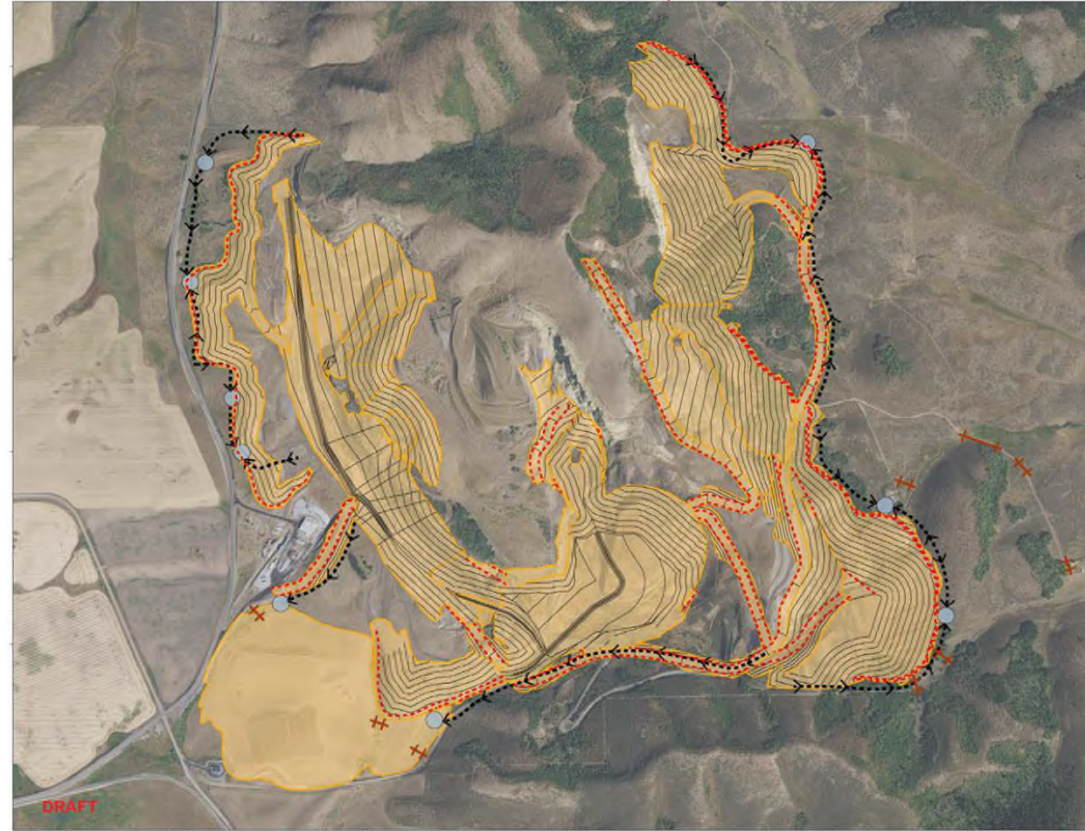
# Ballard Remedial Action





## Ballard Remediation

- // Project Scope – Likely the most extensive CERCLA restoration effort to date in Southeast Idaho Phosphate Region
- // Material Moved – 30 M YDS Total, 5 M Tons Ore Recovered
- // People employed – 50+
- // Project duration – 8 years
- // Cost to complete - \$200M
- // Over \$25 million to be paid out in salaries





# Ballard Schedule

- // EPA Record of Decision - Oct 2019
- // BLM Ore Lease Awarded – Dec 2020
- // **Consent Decree signed by all parties – Execution Pending**
- // EPA Remedial Design (RD) Approval – 1<sup>st</sup>-2<sup>nd</sup> Qtr 2022
- // BLM Mine & Reclamation Plan Approval - 1<sup>st</sup>-2<sup>nd</sup> Qtr 2022
- // Initial Site Development - Fall 2022
- // Site remediation to span 8 years





## Investment In Soda Springs

- // Caldwell Canyon Mine - \$328M
- // Ballard CERCLA Remediation - \$200M
- // Plant Site CERCLA Water Treatment Remediation - \$50M
- // Plant Scrubbing System Upgrades - \$100M





*Thank you!*

