

Idaho's Soil and Water Conservation Districts

To be the primary entity leading non-regulatory efforts in the conservation, sustainment, improvement, and enhancement of Idaho's natural resources.

IASCD Board of Directors

President	Steve Becker , Genesee (Nez Perce SWCD)	DIV. 2
Vice-President	Matt Woodard , Idaho Falls (East Side SWCD)	DIV. 6
Treasurer	Richard Kunau , Declo (West Cassia SWCD)	DIV. 4
Secretary	Joan Cloonan , Garden City (ADA SWCD)	DIV. 3
Director	Bob Flagor , Post Falls (Kootenai-Shoshone SWCD)	DIV. 1
Director	Devin Fielding , Shelley (North Bingham SCD)	DIV. 5
Exec. Director	Benjamin Kelly	





History of Soil and Water Conservation Districts

1930s: Dust Bowl. Severe dust storms damage agriculture and lead to drought. The drought and erosion affect 100,000,000 acres in Texas, Oklahoma, New Mexico, Colorado and Kansas.

During President Roosevelt's first 100 days in office in 1933, several government programs were set forth to conserve soil and restore ecological balance.



Stratford, Texas, 1935



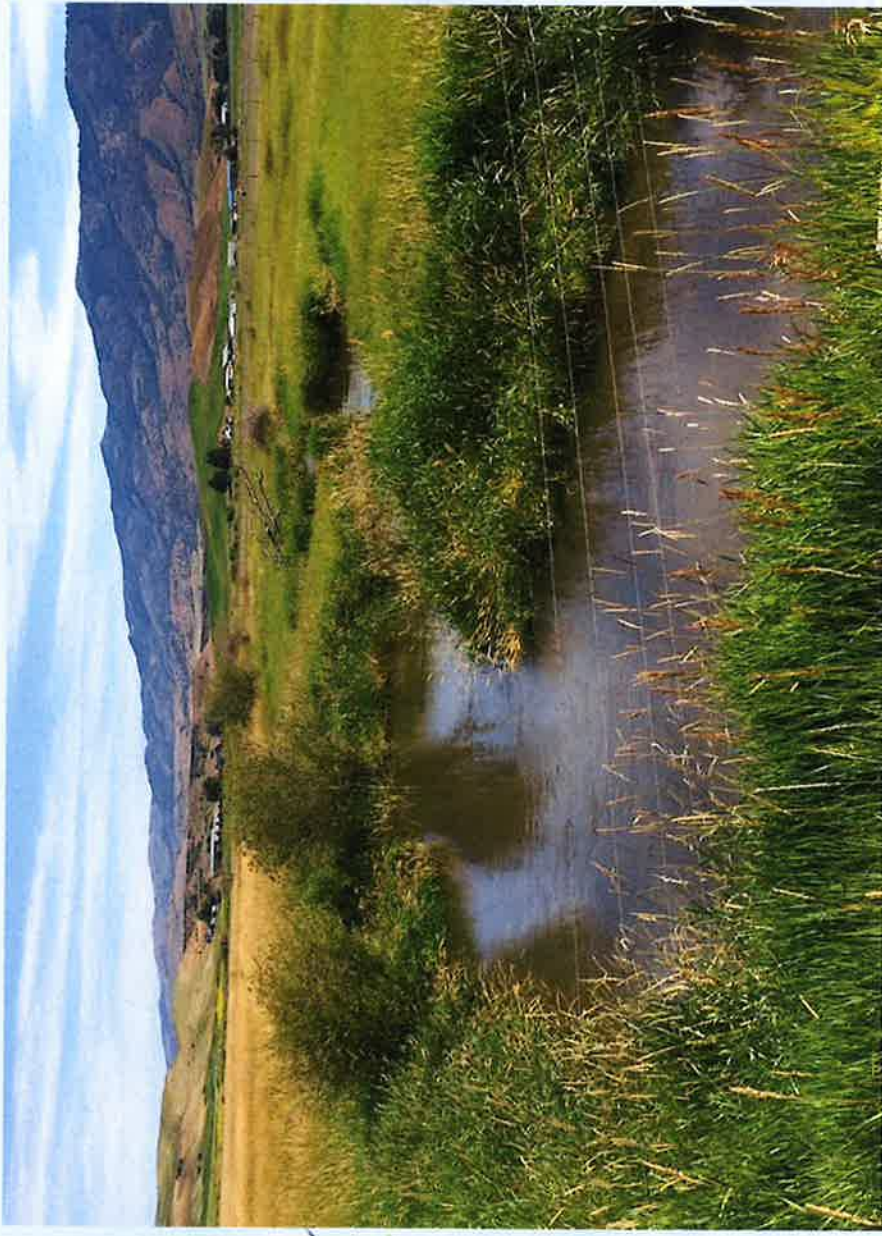
Powers of Conservation Districts

- Conduct surveys and demonstrational projects
- Carry out flood prevention measures
- Enter into agreements
- Acquire property
- Assist private landowners in conserving soil resources, prevent erosion and flooding, implement water conservation measures
- Construct, improve, operate and maintain structures
- Develop comprehensive plans
- Acquire or manage structures operated by federal and state agencies relating to soil conservation, flood prevention, erosion control, or erosion prevention project
- Accept donations, gifts, and contributions in money, services, materials, or otherwise



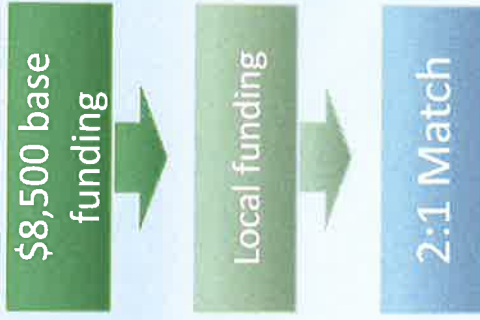








How Are Conservation Districts Funded?



Base funding allocated from the state of Idaho

County, City and other contributions that are not project specific

State of Idaho matches local resource allocations up to \$50,000

How Districts **Obtain Funding**

Grants
Contracts
State Allocations
County Allocations

How Districts **Maintain Funding**

Landowner support and participation
Ensure all grant requirements are completed
Reporting & documenting projects and success



