

Idaho Invasive Species Program



Invasive Species Program Areas

- Prevention
 - Watercraft Inspection
 - Product inspection
- Early Detection Monitoring
 - Plankton tow- Veiliger
 - Adult surveys
- Management and Control
 - Active control programs
 - Rapid response planning
 - Permitting
- Education and Outreach
 - Public campaigns
 - Partnerships





2022 Legislative Program Update

- Program Overview
- Budget
- Watercraft Inspection
- Product Inspection- Marimo Moss Ball
- Monitoring
- Education & Outreach
- 2022 Budget Enhancements



History of Idaho Invasive Species Program

- 2001- Executive Order 2001-11 Establishing the Idaho Invasive Species Council
- 2004- Idaho Invasive Species Summit (2004)
- 2008- Idaho Invasive Species Act of 2008
- 2009- Rules Governing Invasive Species, IDAPA 02.06.09
- 2009- Idaho Protection Against Invasive Species Sticker Rules, IDAPA 26.01.34
- 2009- Idaho initiates first roadside inspection station(s)
- 2009- First QZM fouled watercraft found roadside in Idaho
- 2010- Executive Order 2010-14 The Idaho Invasive Species Council
- 2010- Idaho initiates statewide veliger monitoring
- 2017- Executive Order 2017-05 Continuing the Idaho Invasive Species Council



Interagency Coordination

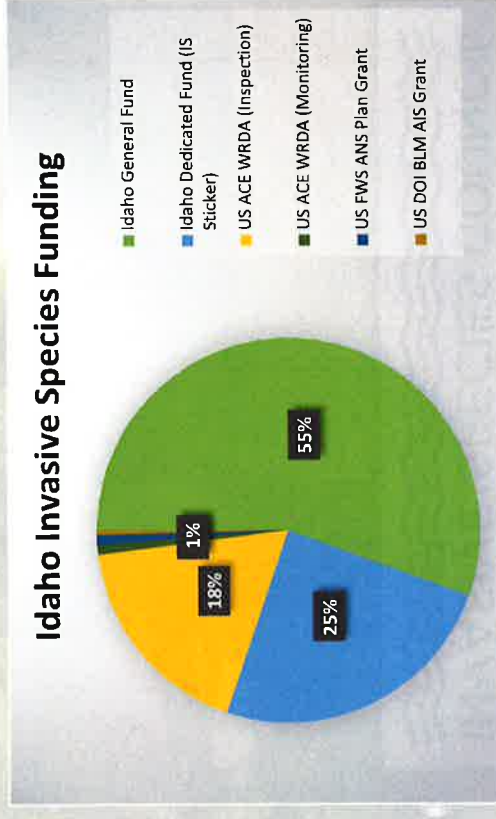
- Executive Order No. 2017-05 Idaho Invasive Species Council
 - Coordinated effort between private industry, local, tribal, state and federal governments.
 - Stakeholder groups (Lakes Commission, Idaho Outfitters and Guides)
 - Prevention and control of invasive species.
 - Bi-annual meetings
 - Chaired by the Director of Idaho State Department of Agriculture
 - Annual updates to the Legislature





Budget

- Prior to FY18 – Invasive Species program operated on \$1.4 million/year budget, funded through the Invasive Species Sticker.
- FY18 (to current):
 - \$3,143,300 in ongoing appropriation from the General Fund
 - \$1,800,000 in one-time federal fund spending authority (WRDA)
 - \$1,500,000 base spending authority from the Invasive Species Fund
 - Other federal grants
 - BLM, USFS, USFWS





Water Resource Development Act (WRDA)

- Funding from the US Army Corps of Engineers
- Agreement through the Pacific States Marine Fisheries Commission (PSMFC)
- Watercraft Inspection
 - Provide funding to Pacific Northwest Columbia River Basin states for prevention efforts
 - 2021- \$1.8 M to Idaho (50% total station cost)
 - 50/50 cost share, costs invoiced to PSMFC
- Monitoring
 - Provide funding to Pacific Northwest Columbia River Basin states for monitoring efforts
 - \$1 Million to the CRB states



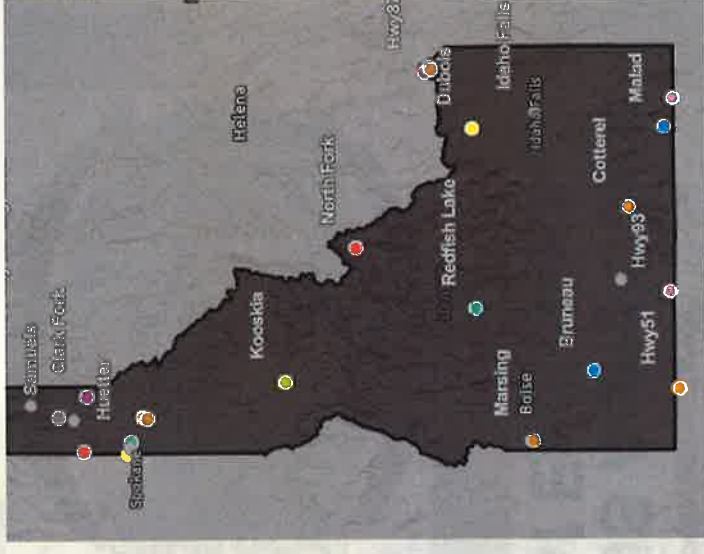
**US Army Corps
of Engineers®**





2021 Watercraft Inspection

- **13th** Year of the inspection program
 - ~114,000 in 2021
 - ~ 964,000 from 2009-2021
- **52** Mussel fouled watercraft
 - **24** Destined to Idaho
- **18** Inspection stations
 - **9** Local station cooperators
- **Extended night operations**
 - **18 Hour (6AM-midnight)**
 - Malad (I-15 N), Cedars (I-90W), Jackpot (HWY 93 N)
 - **24 Hour**
 - Cotterell (I-84W)
- **Extended season duration**
- **Law enforcement support**
 - Local County
 - Idaho State Police





Law Enforcement Support

- ▶ Boater safety and compliance
 - ▶ Focused during hours of high traffic
 - ▶ Inspectors contact dispatch as needed
-
- Idaho State Police
 - Bonner County Sheriff
 - Cassia County Sheriff
 - Kootenai County Sheriff
 - Lemhi County Sheriff
 - Oneida County Sheriff
 - Owyhee County Sheriff
 - Twin Falls County Sheriff



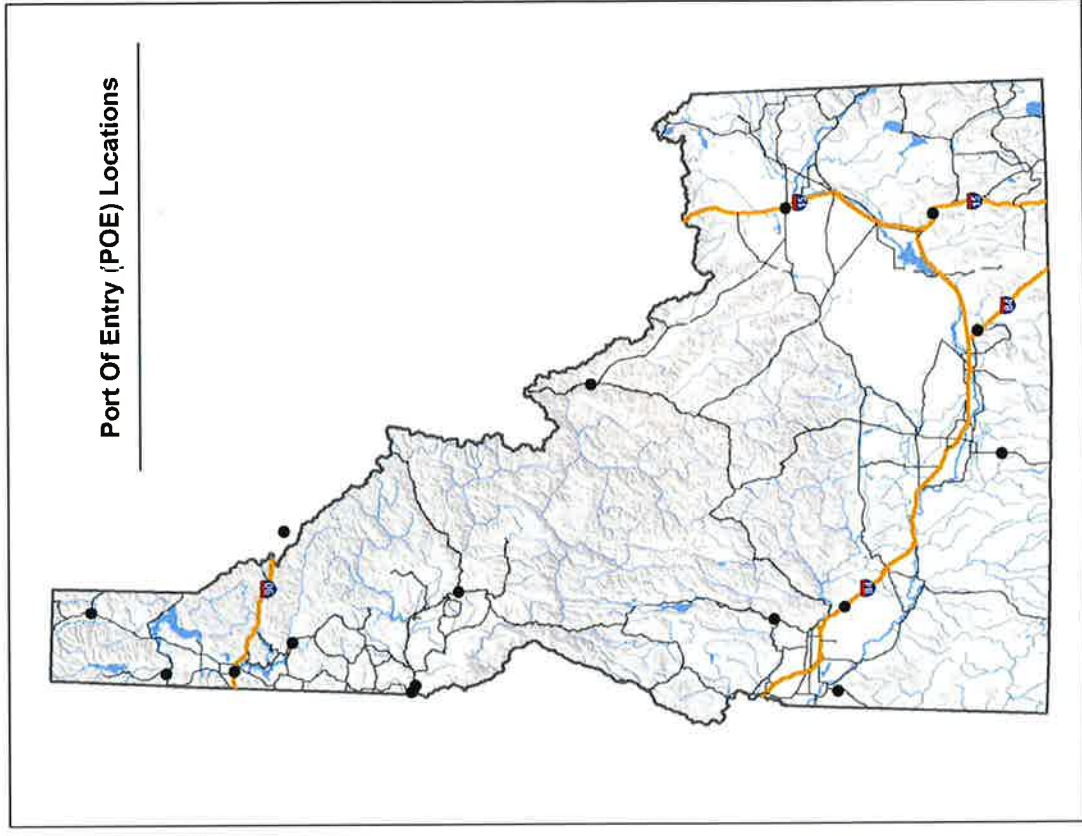


Idaho Transportation Department Port of Entry (POE)

- Commercially Hauled Vessels are inspected for mussels at POE
- ISDA receives oversize load permits for water related equipment
- Customs & Boarder Protection also inspecting
 - Notify ISDA staff if mussels are found



Cotterell I-84 POE





**Watercraft Inspections and Interceptions
for 2016 – 2021* OR, WA, MT, ID**
*2021 - Through December 1, 2021 (DRAFT)

State	2016 Inspection	2017 Inspects (WRDA \$\$ Begin, April 2017)	2018 Inspection	2019 Inspection	2020 Inspection	2021 Inspection	2016 Mussel Fouled	2017 Mussel Fouled	2018 Mussel Fouled	2019 Mussel Fouled	2020 Mussel Fouled	2021 Mussel Fouled
MT	39,000	86,000	109,000	113,000	174,423	114,382	9	17	16	17	35	61
WA	2,180	9,054	24,645	32,502	32,735	55,412	0	0	18	16	25	39
OR	16,686	21,031	28,190	26,882	24,043	19,663	17	17	11	16	12	11
ID	89,390	93,083	110,285	118,350	134,714	113,732	17	31	50	45	35	52
Totals	147,256	209,168	272,120	289,734	365,915	303,189	43	65	95	91	107	163

Weeds on Watercraft?

541

Law Enforcement Returned

1,789

From Infested Water

2,506

Total Hotwashed Watercraft

903

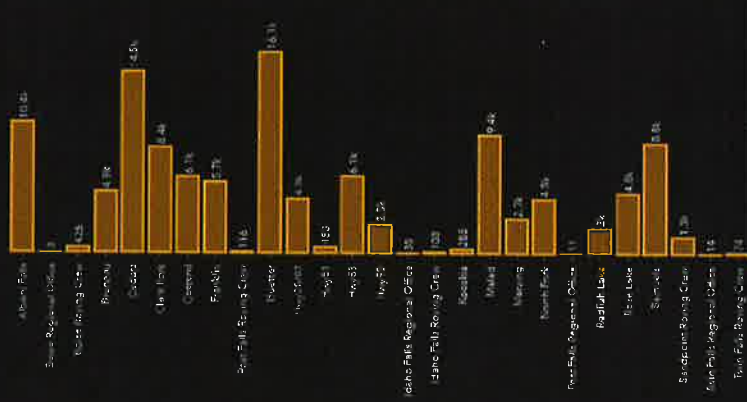
Total Watercraft Inspected

113,732



Map Data: HERE Maps, Esri, NOAA, USGS, EPA | Created by NACE from 1,245,000 sq. mi. | Reviewed by ERI

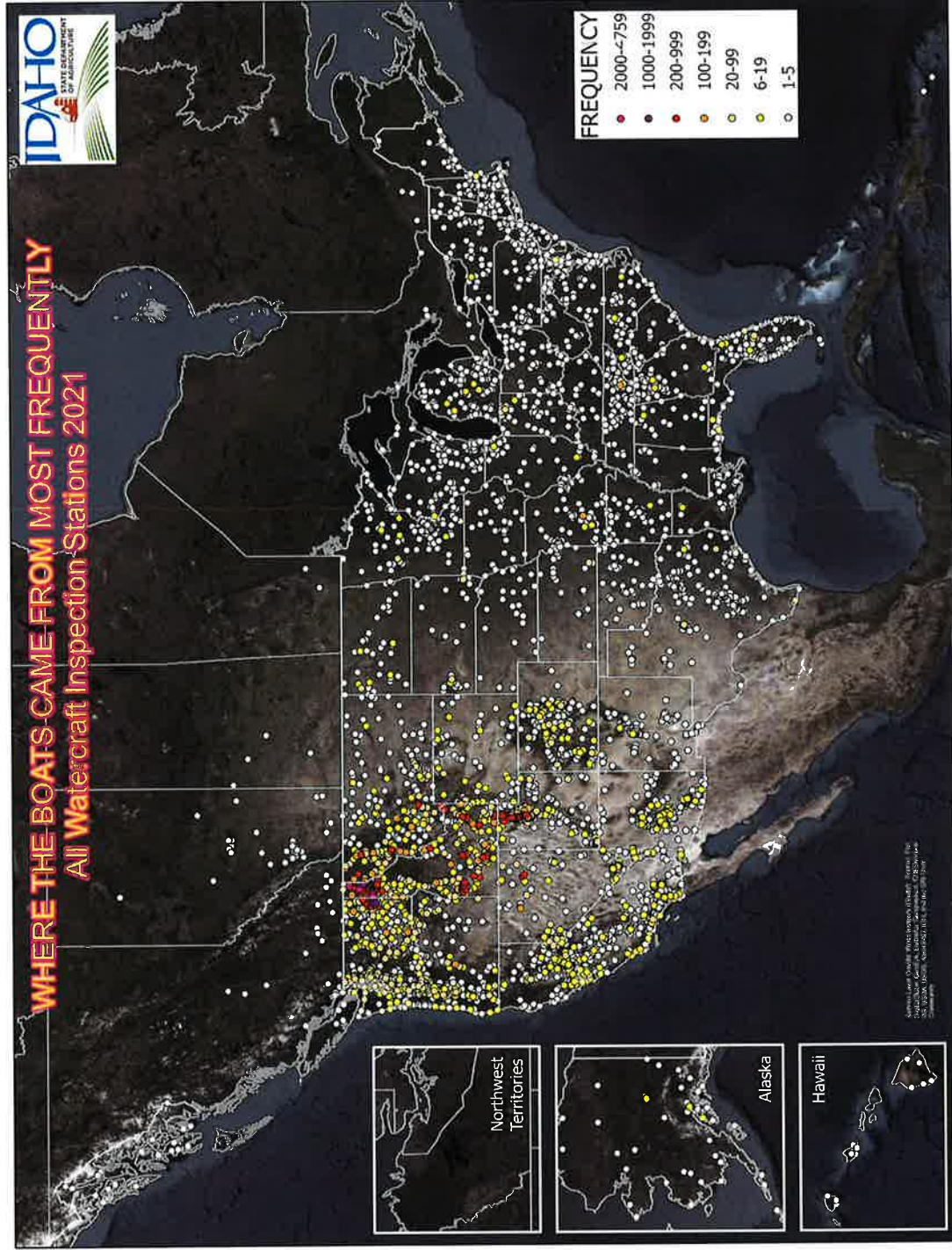
Inspections by Station



Inspections From Fouled Waters

<p>Inspection Station = Hwy93 Date and Time = Sat Oct 31 2021 16:47:00 GMT-5:00 (Mountain Daylight Time) Watercraft Type = Kayak Days in Water = 1 Days out of Water = 3 Name of Waterbody = Powell Lake, Arizona Destination State = Oregon</p>
<p>Inspection Station = Cottrell Date and Time = Sat Oct 30 2021 22:40:00 GMT-5:00 (Mountain Daylight Time) Watercraft Type = Fishing Boat Days in Water = 15 Days out of Water = 7 Name of Waterbody = Bull Mountain Lake, Arizona Destination State = Oregon</p>
<p>Inspection Station = Cottrell Date and Time = Sat Oct 30 2021 19:40:00 GMT-5:00 (Mountain Daylight Time) Watercraft Type = Fishing Boat Days in Water = 15 Days out of Water = 6 Name of Waterbody = Bull Mountain Lake, Arizona Destination State = Oregon</p>
<p>Inspection Station = Hwy93 Date and Time = Sat Oct 30 2021 15:41:00 GMT-5:00 (Mountain Daylight Time) Watercraft Type = Fishing Boat Days in Water = 1 Days out of Water = 4 Name of Waterbody = Powell Lake, Arizona Destination State = Idaho</p>
<p>Inspection Station = Cottrell Date and Time = Sat Oct 30 2021 14:00:00 GMT-5:00 (Mountain Daylight Time) Watercraft Type = Fishing Boat Days in Water = 5 Days out of Water = 1 Name of Waterbody = Powell Lake, Idaho Destination State = Oregon</p>
<p>Inspection Station = Malden Date and Time = Sat Oct 30 2021 13:05:00 GMT-5:00 (Mountain Daylight Time)</p>

- 2021: <https://www.arcgis.com/apps/dashboards/9693b01dcd65409aaaf7ecb06da57c93>
- 2020: <https://idaho.maps.arcgis.com/apps/opsdashboard/index.html#/ad679c90ae9f4979a49013985d28da8a>
- 2019: <http://idaho.maps.arcgis.com/apps/opsdashboard/index.html#/91aa2987ab5542b08523d6a9056697d2>





2021 Watercraft Inspection Data

Top 10 Cities That Boaters Are From
(Derived From Zipcode)

City or Town	State	Frequency 2021
Spokane	WA	12079
Post Falls	ID	4787
Coeur D Alene	ID	4717
Sandpoint	ID	3964
Bonniers Ferry	ID	2467
Boise	ID	1841
Hayden	ID	1710
Clark Fork	ID	1689
Salt Lake City	UT	1577
Rathdrum	ID	1352

Where are you from?

2021 Watercraft Inspection Data

Top 10 Waterbodies Previously Visited (Non-infested & Infested)

Waterbody and State	Prev Waters 2021 Freq	Infested
Pend Oreille Lake, Idaho	8445	Yes
Coeur d'Alene Lake, Idaho	5920	Yes
Priest Lake, Idaho	3359	Yes
Coeur d'Alene River, Idaho	2790	Yes
C.J. Strike Reservoir, Idaho	2207	Yes
Pend Oreille River, Idaho	1518	Yes
Roosevelt Lake, Washington	1272	Yes
Salmon River - Main, Idaho	1153	Yes
Hauser Lake, Idaho	1149	Yes
Flathead Lake, Montana	1125	Yes

Waterbody and State	Prev Waters 2021 Freq	Infested
Powell Lake, Utah	862	Yes
Havasu Lake, Arizona	341	Yes
Mead Lake, Nevada	135	Yes
Colorado River - Grand Canyon, Arizona	80	Yes
Mead Lake, Arizona	77	Yes
Pleasant Lake, Arizona	75	Yes
Powell Lake, Arizona	64	Yes
Colorado River - Parker, Arizona	42	Yes
Colorado River (location not specified), Arizona	41	Yes
Saguaro Lake, Arizona	36	Yes

Where has your boat been?

INVASIVE
SPECIES

OF IDAHO



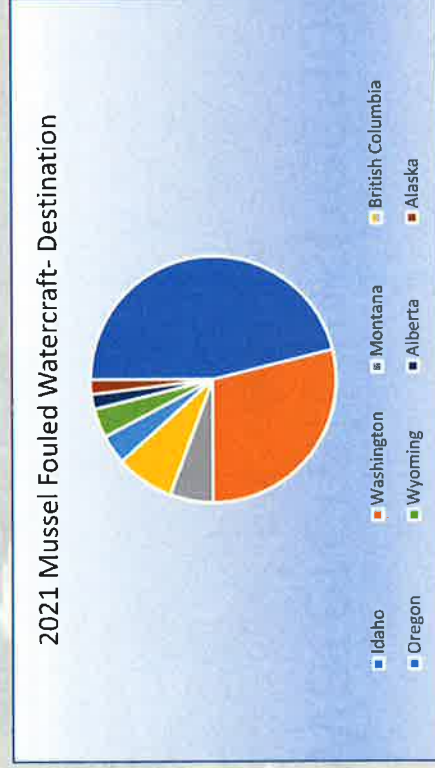
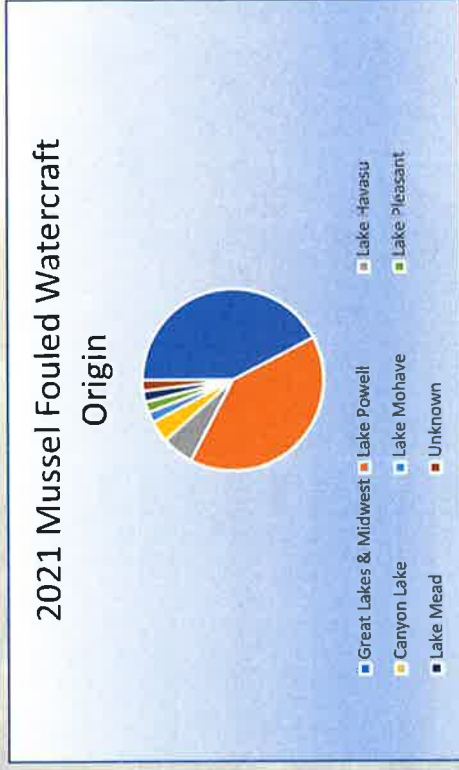
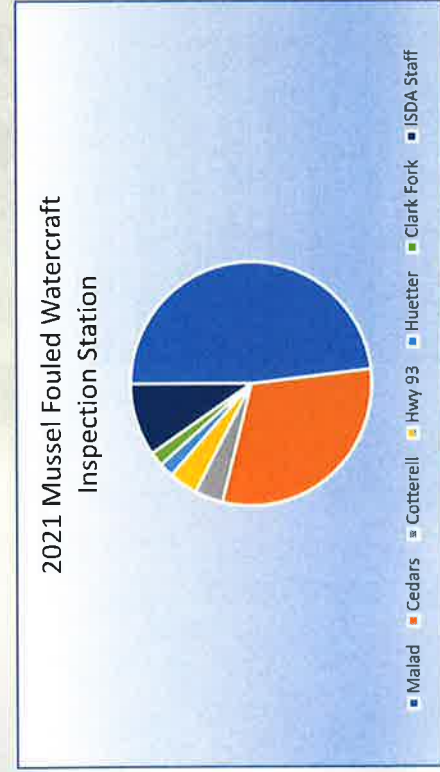
2021 Watercraft Inspection Data

Top 10 Destination

Waterbody and State	Dest Waters 2021 Freq
Coeur d'Alene Lake, Idaho	8259
Pend Oreille Lake, Idaho	7786
Priest Lake, Idaho	7498
C.J. Strike Reservoir, Idaho	3291
Redfish Lake, Idaho	2200
Pend Oreille River, Idaho	1841
Salmon River - Main, Idaho	1569
Hauser Lake, Idaho	1555
Coeur d'Alene, Idaho	1499
Island Park Reservoir, Idaho	1491

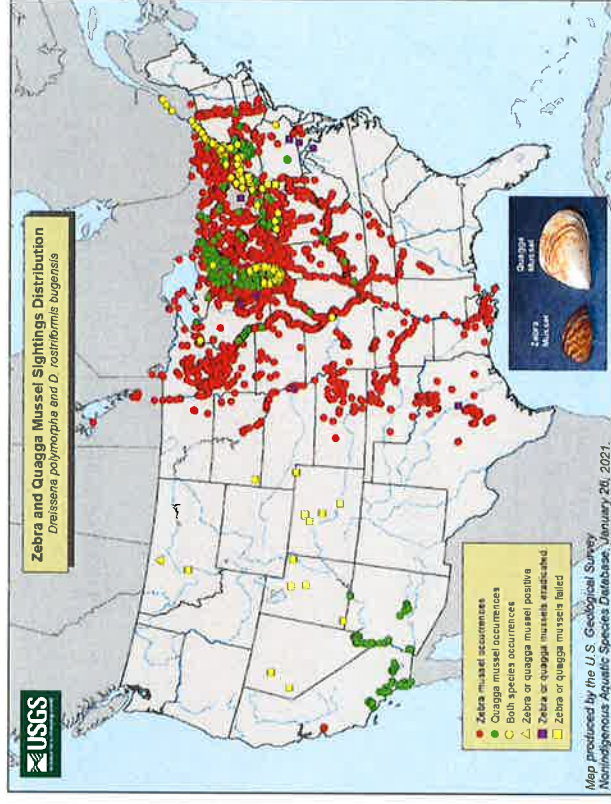
Where is your boat going?

2021 Mussel Fouled Watercraft



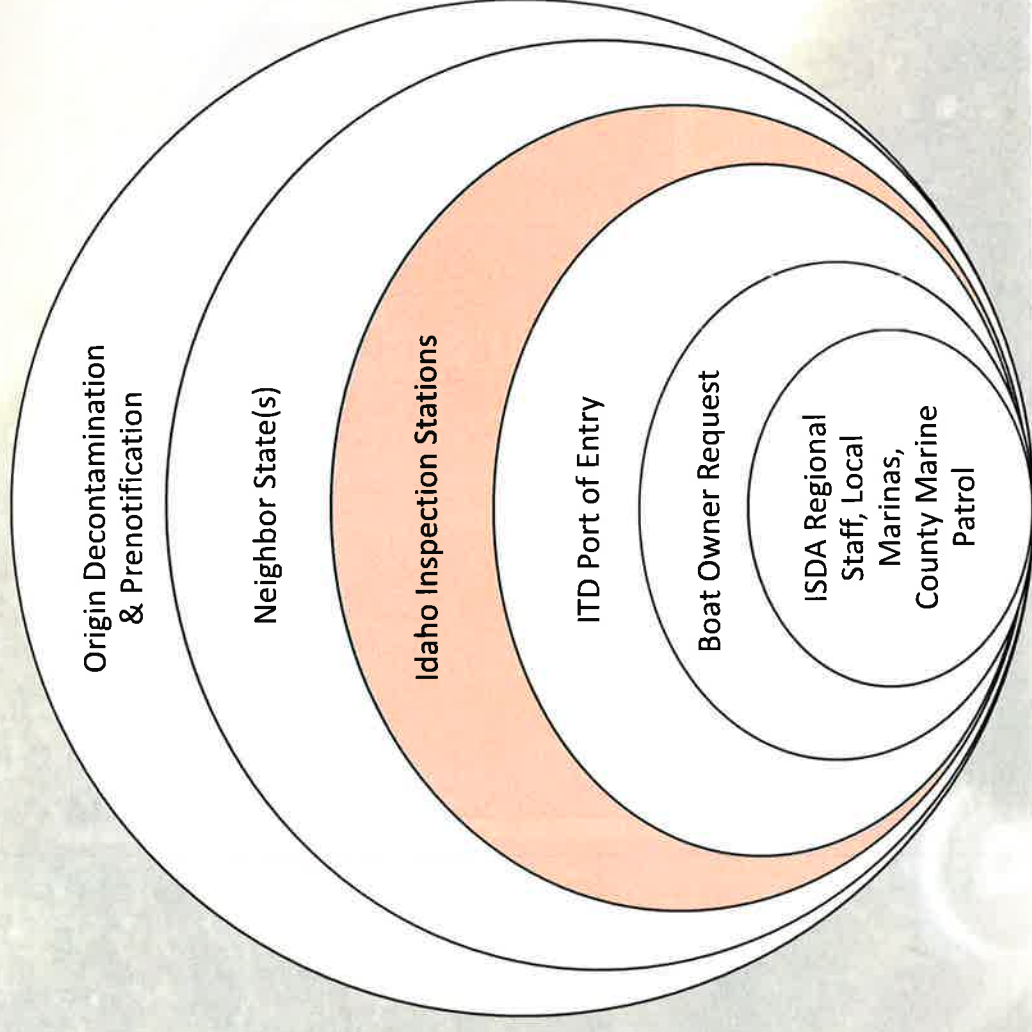
Invasive Mussel Distribution

- Mussel expansion in Mid-West, Great Lakes, Texas
- Pacific Northwest remains invasive mussel free following 2021 monitoring
- Montana
 - Tiber (Lake Elwell) Reservoir:
 - Mussel veligers identified in October 2016
 - Montana categorized as “suspect” (5-year status)
 - No veliger or adult detections in 2021
 - **Petition delisting following spring 2022**
 - Canyon Ferry Reservoir: Helena
 - Single mussel veliger that appears to be zebra/quagga
 - Montana categorized as “inconclusive” (3-year status)
 - **Delisted**



Watercraft Inspection in the West

- Several “nets” provide coverage for Idaho and Columbia River Basin
- Minimum inspection protocol standards
- Regional networking
 - Neighbor State(s)
 - Regional Database
 - Transportation permits
- NEW “Call Before You Haul” program
- Information passed on to inspection station(s) & managers
- ISDA online decontamination request form
- Decontamination may be appropriate at destination



Site Improvements

- Earthwork (gravel/asphalt)
- Modular offices & furniture
- HVAC
- Electrical utilities
- Water utilities
- Increased lighting
- Barriers
- Signage
- Electronic message boards

*Accomplished through multiple federal, state, local, & private partnerships



Marimo Moss Ball

- 1st detection in Seattle, WA; pet store employee via USGS NAS alert system on March 2, 2021
- Initiated multi-partner communications (cross regions/states/provinces,)
 - 46 states and multiple provinces
- Idaho: Within 24 hours of initial detection- 18 stores identified with potentially contaminated product
- Within 48 hours of initial detection- Idaho removed contaminated product statewide
 - Identified and verified Zebra mussels in shipments
 - Federal, state and local response- Thank you!

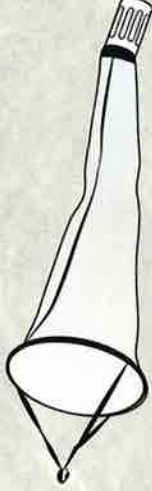


2021 Early Detection Monitoring

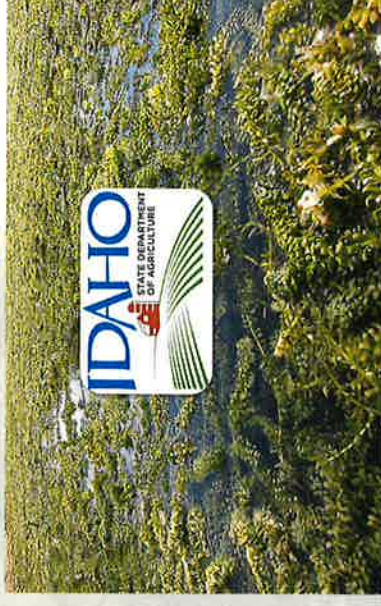
- 12th year of monitoring in Idaho
- No detections in 2021
- Focused survey blitz strategy to manage workload
- Assistance from partners across the state
- Activate Idaho rapid response plan if detection occurs



2021 Early Detection Monitoring



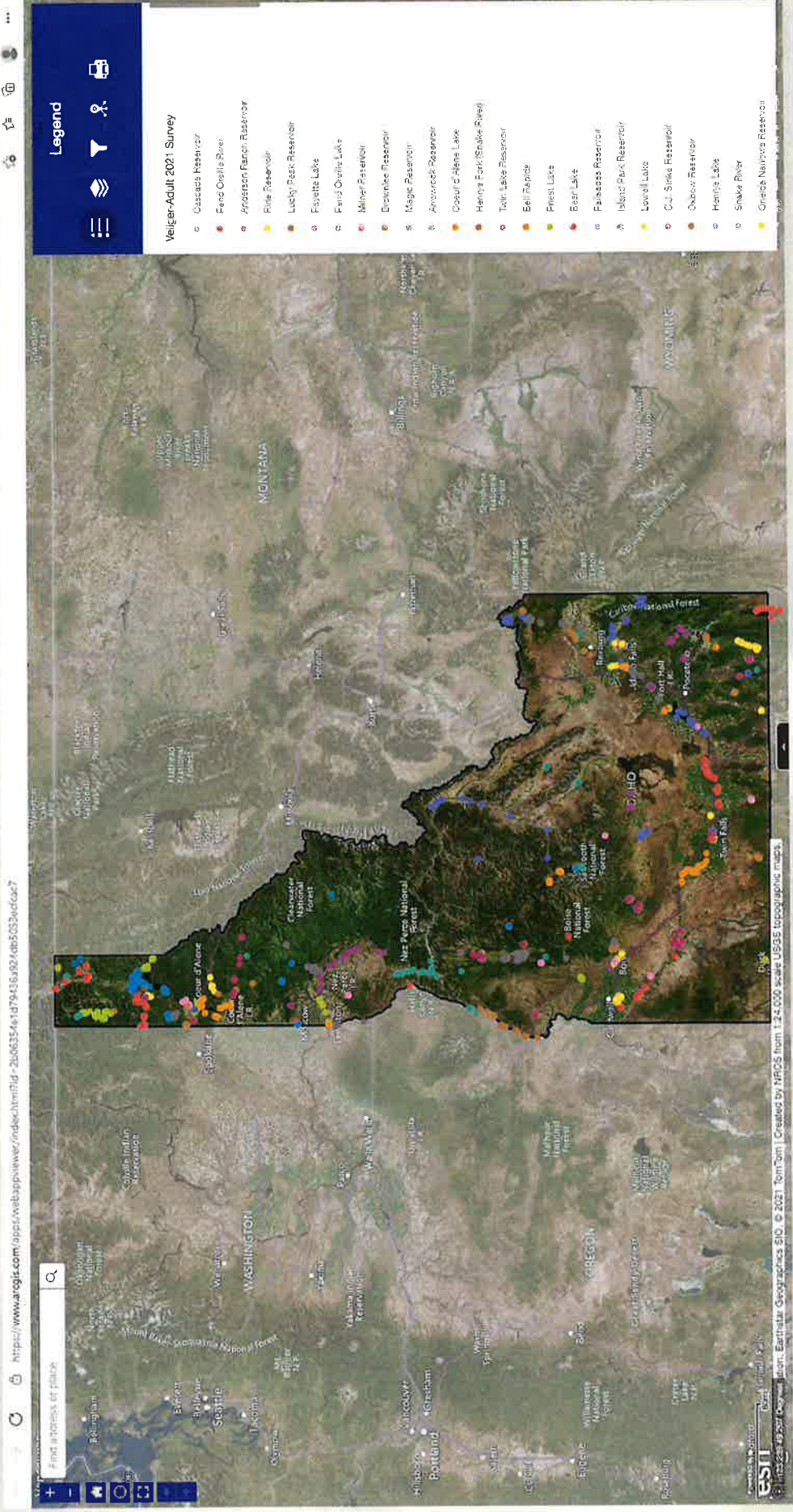
- **Veliger Monitoring (microscopy)**
 - **1,614** plankton samples collected from **119** waterbodies
 - Multiple sample events, bi-weekly, per waterbody
 - Priority overnight shipment
 - 2 week turnaround for lab analysis
- **Adult Monitoring (visual)**
 - **1,265** surveys conducted collected from **112** waterbodies
 - Reservoir drawdown, substrate and benthic grab sampling
- Shift monitoring focus for Marimo moss ball
- **Monitoring Webmap:**
 - <https://www.arcgis.com/apps/webappviewer/index.html?id=2b06354e1d79436a924db5053ecfcac7>



Idaho Waterways Survey
A Standard Operating Procedure for Aquatic Plants & Invasive Species



**INVASIVE
SPECIES
OF IDAHO**

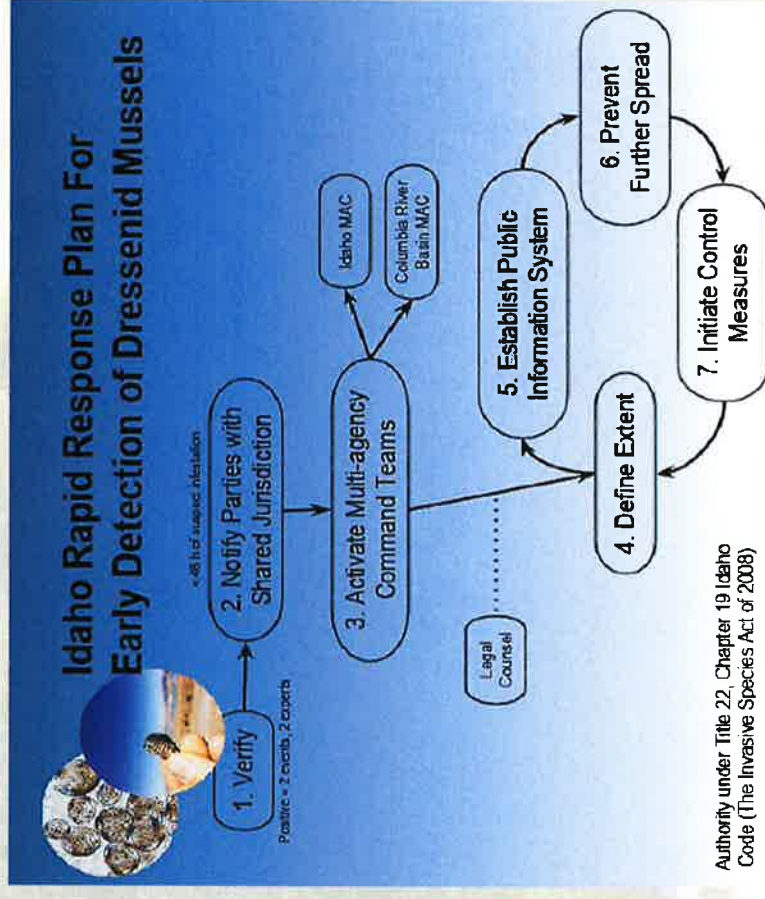


<https://www.arcgis.com/apps/webappviewer/index.html?id=2b68354e1d7943649248b5053bedcac7>

esri | 10/22/2023 10:50:57 AM | Attribution: Earthstar Geographics (I.D. © 2021 TomTom | Created by NPS from 1:4,000 scale USGS topographic maps.

Idaho Rapid Response

- Idaho Rapid Response Plan
 - Aligns with regional state plans
 - Aligns with Columbia River Basin Interagency Plan
 - Focuses on verification and communication
 - Learning from other states' experiences
- 2021 rapid response exercise
 - Fort Peck, MT
 - September 8-9, 2021
 - Invasive Species Action Network (facilitator)
 - Pacific States Marine Fisheries Commission
 - <https://www.westernais.org/rapid-response>





Regional Meetings & Coordination

- Pacific Northwest Economic Region (PNWER)
- Columbia River Basin Team (CRB)
- Western Regional Panel (WRP)
- Western Invasive Species Coordinating Effort (WISCE)
- Western Governors' Association (WGA)
- DOI Mussel Initiative
- Regional Conference Calls
- Lakes Commission(s)





Education and Outreach

- Campaign
 - Clean, Drain, Dry
 - Know What you Grow
 - Don't Let it Loose
 - Knock it Off
 - Buy it where you burn it
- Various Pathways
 - Inspection stations
 - Cooperative partners
 - Outreach events, seminars and workshops
 - Radio
 - Website
 - Facebook
 - Banner advertisement
 - Google advertisement
 - Promotional item, brochure, sticker, etc.

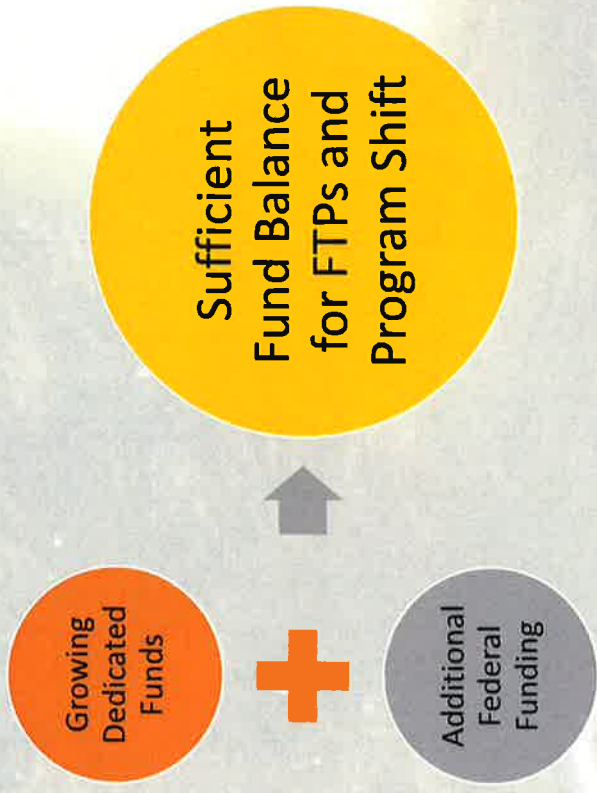
Radio (10 second)

Clean, drain and dry your boat to keep invasive species from destroying Idaho waterways. Clean. Drain. Dry. Find out more at [invasivespecies dot idaho dot gov](http://invasivespecies.idaho.gov)

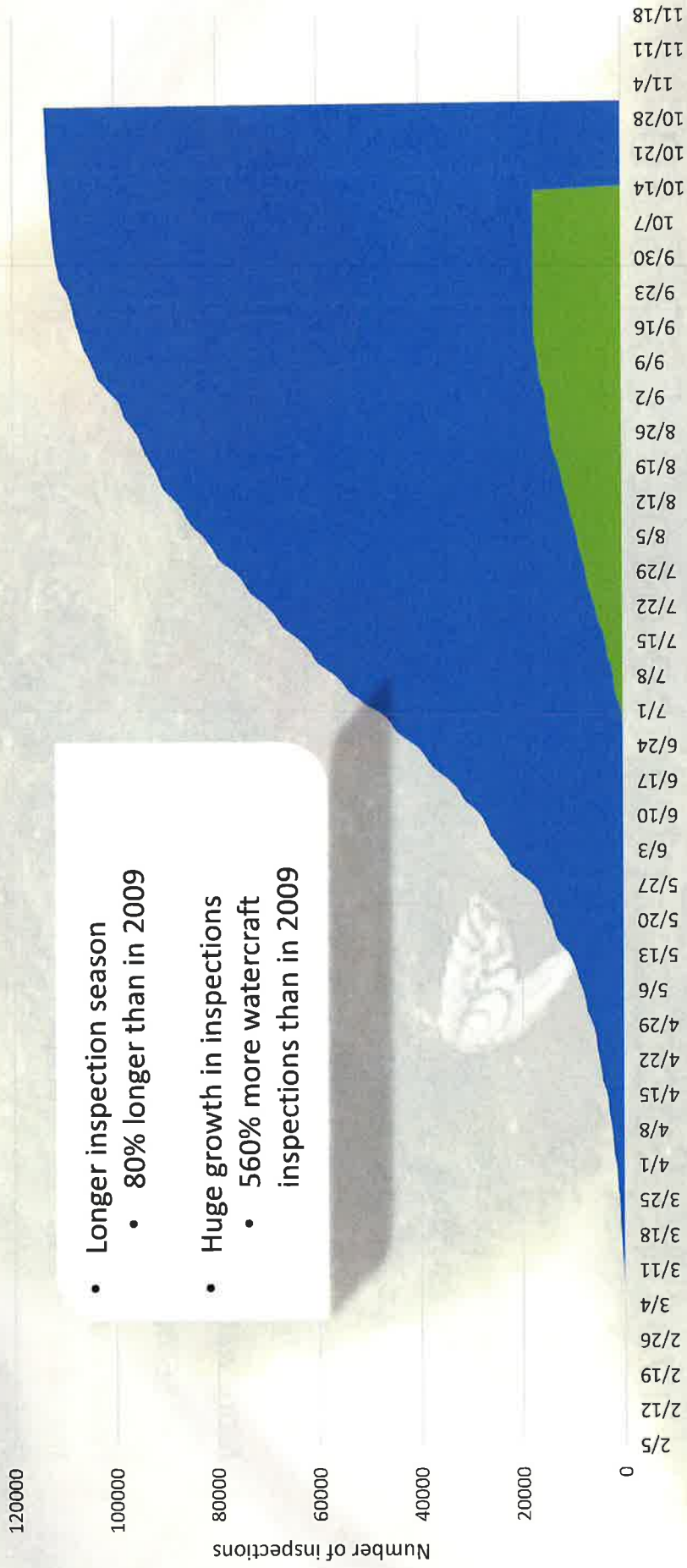


Invasive Species Enhancement – LBB 5-10

- 10 FTPs
- Previously hired a high number of temporary positions
 - Harder to find temps and the inspection season is 80% longer than in 2009
- More watercraft inspections
 - 560% from 2009
- Fewer contractors can run stations in the future – also face difficulties finding temporary staff
- Dedicated Fund: \$980,800



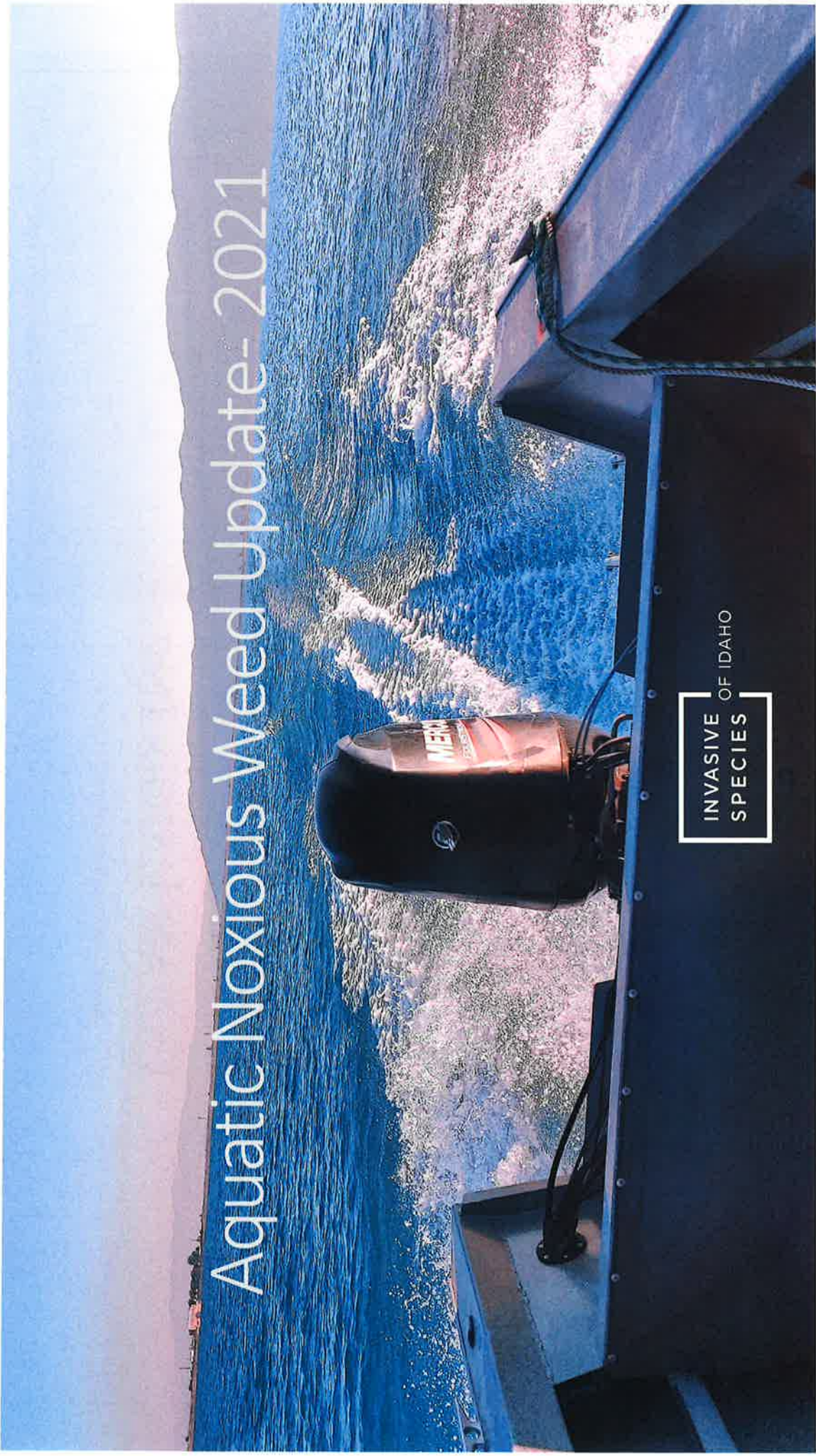
2009 vs. 2021 Cumulative Watercraft Inspections



- Longer inspection season
 - 80% longer than in 2009
- Huge growth in inspections
 - 560% more watercraft inspections than in 2009

Aquatic Noxious Weed Update- 2021

INVASIVE
OF IDAHO
SPECIES





Aquatic Treatments Herbicide

EURASIAN WATERMILFOIL

- Hayden Lake 44.73 acres
- Pend Oreille Lake & River 123.08 acres
- Bear Lake 18.4 acres

CURLY LEAF PONDWEED

- Hayden Lake 296.4 acres
- Lake Coeur d'Alene 8.8 acres

CLEAN LAKES INC.
Aquatic Ecosystem Restoration & Maintenance

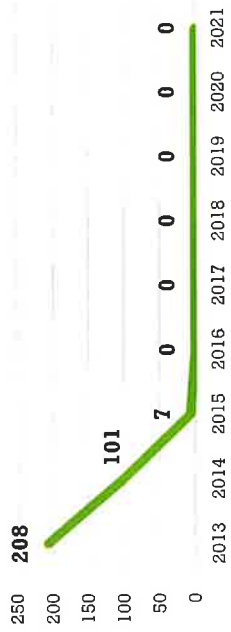




Aquatic Treatments ISDA Staff

- Hydrilla
- Parrotfeather Milfoil
- Flowering Rush
- Eurasian Watermilfoil

Hydrilla, Boise Hot Ditch 2013 to 2021



Hydrilla, Bruneau River 2013 to 2021



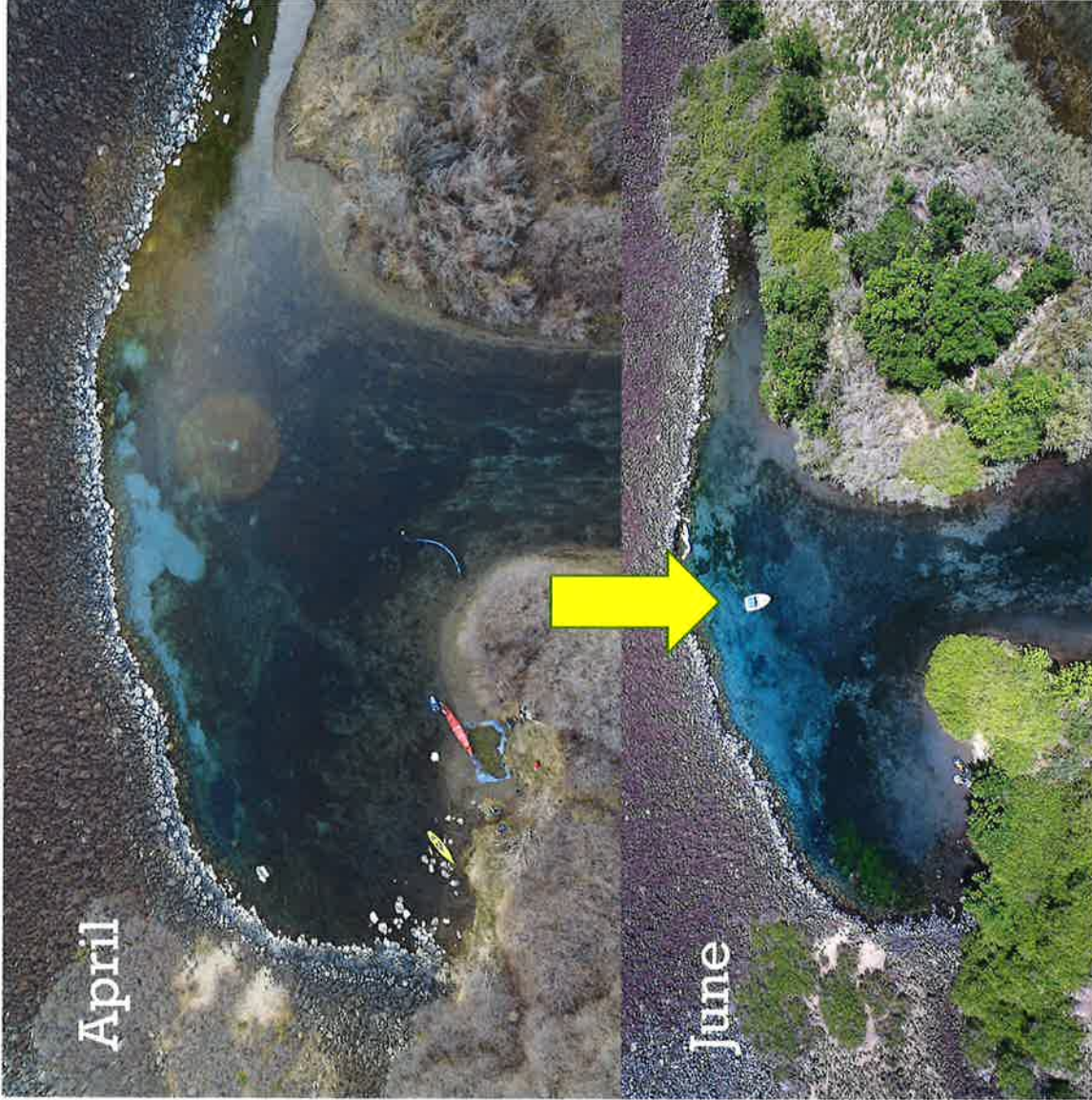
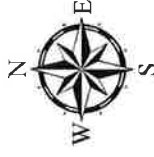
Hydrilla, Buhl-Twin Falls Area 2017 to 2021



Blue Heart Springs Eurasian watermilfoil Project



Eurasian watermilfoil was identified in the Blue Heart Springs area of the Snake River, near Hagerman, Idaho. The project area is shown in green on the right and below is the approximate location of the springs from Hagerman, Idaho. Work is scheduled to begin on April 6-7, 2021 and intermittent removal work will continue through out the growing season in 2021.



April

June



2021 CWMA Cost Share Progress

SNWAC Sub-Committee Recommendations

- Award 23 of 26 CWMA Cost Share requests
- Cut ~\$258,000.00 of unallowable projects
- Recommendation to fund ~\$1,191,000.00

Admin Review

- Accepted recommendations from committee
- Made additional cut of \$1,160.00
- Awarded CWMA's
 - \$971,215.90 State Funds
 - \$39,928.35 Federal GSG Funds
 - \$35,700.00 Federal Funds



13 Year CWMA Summary

