

I D A H O
RANGELAND



Gretchen Hyde, Director

Partners in promoting sustainable rangelands because we all care.





- Darcy Helmick, chair-ICA (Grand View, ID)
- John Peavey-IWGA (Carey, ID)
- Jerald Raymond-ICA (Menan, ID)
- Dawn Holmes-UI Rangeland Center PAC (Indian Valley, ID)
- Merrill Beyeler—IRRC (Leadore, ID)

Partners in promoting sustainable rangelands because we all care.



IRRC Funding:

- 1997 Legislatively mandated refundable assessment
- State and Federal grazing allotments @ \$.10/AUM for current/active use
- Private “category 5/dry graze” deeded land at \$.02/acre
- IDL includes IRRC assessment on annual bill
- BLM & USFS send a separate bill with allotment bills
- Private-data submitted by counties annually and billed by IRRC in the fall upon compiling and exemptions recorded
- Changes to assessment must be legislatively approved
- Grants and Assistance Agreements

Partners in promoting sustainable rangelands because we all care.

IRRC funding



IDAHO
RANGELAND
Resources Commission

Partners in promoting sustainable rangelands because we all care

IRRC Goals:

- To increase public understanding that Idaho's rangelands are a renewable source of important consumer products and environmental values.
- To provide, coordinate, and disseminate factual information about the economic and environmental aspects of grazing management practices.
- To promote public support for Idaho's livestock industry.
- To help achieve and maintain a healthy livestock industry through responsible rangeland stewardship.
- To advocate balanced use of rangeland resources.

Partners in promoting sustainable rangelands because we all care.

Idaho Rangeland Resources Commission (IRRC)

- **Care and Share Campaign** – “Care for Idaho’s rangelands and **Share** them respectfully with others.” The primary audience is outdoor recreationists who may not be aware of the authorized and historic use of public and private lands for livestock grazing.
- **Idaho Rangeland Outdoor Adventure Mobile (IROAM)** – An IRRC education partnership complete with rangeland ecology classroom exhibits and curriculum including hands-on activities.
- **Life on the Range Video Series** – The IRRC produced more than 50 educational videos that feature BLM topics of range monitoring, fire suppression, sage grouse habitat, multiple-use land management, post-fire restoration, recreation and livestock grazing.

Partners in promoting sustainable rangelands because we all care.

Care and Share Campaign

“Care for Idaho’s rangelands and Share them respectfully with others.”



Move slowly past animals on rangelands.

SHEEP AND CATTLE DINE HERE



As the most abundant species from the Bureau of Land Management, the U.S. Forest Service and the Idaho Department of Fish and Game, sheep and cattle are the most common rangeland users. They have been grazing on Idaho's rangelands for over 100 years. Their grazing helps maintain the health of the rangelands and the wildlife that depends on them. The government regulates their grazing to protect the rangelands and the wildlife that depends on them. The government also regulates their grazing to protect the rangelands and the wildlife that depends on them.



- Radio
- Website
- TV
- Newspaper
- Signs

Partners in promoting sustainable rangelands because we all care.



Care and Share Campaign

“Care for Idaho’s rangelands and Share them respectfully with others.”

FENCES AND GATES ARE TOOLS



Conservation is a goal for all of us. It's important to understand that fences and gates are tools that help us manage our land. They are not barriers. They are not signs of ownership. They are not signs of exclusion. They are tools that help us manage our land.

As we manage our land, we must be respectful of others' land. We must be respectful of the land itself. We must be respectful of the tools that help us manage our land.



- Radio
- Website
- TV
- Newspaper
- Signs



Leave gates as you find them on public land. Do not trespass on private land.

Partners in promoting sustainable rangelands because we all care.



Recreational User Stewardship

9 **SHOW RESPECT FOR ANIMALS**

- Enjoy wildlife at a safe distance – don't get too close.
- If you see what you think is an abandoned animal, don't bring it home. It's mother is nearby.
- Stay in your vehicle for best viewing opportunities.
- Always advise to drink when they approach a stream or water trough.

10 **PREVENT HUMAN-CAUSED FIRES**

Most wildfires on Idaho rangelands are started by humans.

- Fully extinguish your campfire with water before leaving your campsite.
- There may be limitations on the use of campfires on public lands in August (fire season) or in times of extreme drought. Please do your part to protect these beautiful landscapes and wildlife.

1 **KNOW WHERE TO GO**

Understand mixed land ownership, private property and trespass law. You may encounter private, state and federal lands as part of your journey – even within the same pasture. Forces on rangeland are not ownership boundaries – they are a management tool for livestock, research and ownership before you go.

- Maps – Bring hard-copy maps and a GPS. Many areas on Idaho's public lands are not in cell range.
- Respect private lands and No Trespassing signs. It's illegal to trespass on private lands. Violators can be subject to fines and prosecution.
- Use online trip-planning resources: trails.idaho.gov or the Idaho Hunt Planner (IHP): idaho.gov

WELCOME TO IDAHO!

Idaho has more than 28 million acres of wild open spaces known as rangeland.

Many of our public lands are managed for multiple uses to ensure enjoyment in access to our public lands. It's important that all trail users, campers, hunters and anglers show respect for the land, fellow public lands users and livestock.

Follow the Care/Share mantra: "Care for Idaho's public lands and share them respectfully with others."



10 TIPS 

MANAGEMENT OF RANGELAND IN IDAHO



BUREAU OF LAND MANAGEMENT
3410

IDAHO RANGELAND Resources Commission

P.O. Box 316, Emmett, ID 83617
(208) 368-7002
(877) ID-RANGEL (toll free in Idaho)
IdahoRangelandResources.com

Resources for more information:
BLM: blm.gov/wildlife
US Forest Service – Contact the specific National Forest you are visiting.
Care/Share web site: idrange.org
secretary@care-share.org
IDEC: idaho.gov

Partners in promoting sustainable rangelands because we all care.

Recreational User Stewardship

©2013 Idaho Department of Fish and Game

#2

BE A GOOD TRAIL AMBASSADOR

- Slow down when approaching other trail users. Be friendly and say "hi" when you encounter others on the trail. A little courtesy goes a long way!
- In general, uphill traffic has the right of way.
- Mountain bikers and motorized trail users should yield to hikers, runners, and horseback riders on the trail.
- If you approach horseback riders, talk to the riders and let the horses know you're human so they don't spook. Step off the trail and let them pass by.
- Keep singletrack's single. ATVs and side by sides are not allowed on singletrack trails.
- Stay on designated trails.

#3

LIVESTOCK GRAZING

Livestock grazing provides food and fiber for the nation while providing fuel load reduction to mitigate wildfires. Rangeland is the economic base of Idaho's rural communities. Rangelands are both playgrounds for recreationists and work places for ranchers.

Showing respect for all users will allow for continued access and responsible management of Idaho's rangeland.



Here are some tips to co-exist with ranchers and land managers on rangeland:

- Leash pets when encountering sheep or cattle on the trail; dogs can be seen as a predator.
- If you encounter livestock on the trail, slow down to walking speed. Continue moving forward, and the animals will move off to the side of the trail.
- If you run into sheep, be aware that livestock guardian dogs—often large white Great Pyrenees dogs—are with the sheep to protect them from predators such as coyotes, bears, mountain lions and wolves.
- To avoid antagonizing guard dogs, mountain bikers should dismount from their bikes and walk through the sheep. Keep your bike between you and the guard dog. Talk to the dogs. Let them know you're human. Once through the sheep, continue your ride.
- Don't try to outrun guard dogs on your mountain bike. This will encourage them to chase you.



- Be patient and enjoy Idaho's wide open spaces.
- Take pictures.



#4

RURAL TRAFFIC JAM

- Be patient and enjoy Idaho's wide open spaces.
- Take pictures.



#5

GATES AND FENCES

If a gate is closed, pass through and return it back to the original position. If a gate is open, leave it open. Often, if a gate is meant to be open, it will be laid up against the fence. Fences are there to keep livestock in the correct pasture. Cutting fences causes damage to rangeland.

#6

NO ONE WANTS TO SEE YOUR MESS

Park out your garbage. Leave no trace.



#7

BE PREPARED

There are no services in remote areas. Bring a good pack, a spare tire or even two spare tires if you're traveling rough 4WD roads. Park jumper cables. Take a Spot, satellite phone or GPS with SOS function for emergencies. Let someone know where you plan to travel in advance.

#8

SHOOTING ON RANGELANDS

- Water troughs are necessary for birds, livestock and wildlife. Do not shoot or damage any infrastructure on rangeland.
- Never shoot from or over any road or highway.
- Set up a target with a safe and large backdrop.
- Expanding targets are prohibited.
- Don't use plastic pellets, tracer rounds, exploding rounds or steel cover rounds to avoid ricochets.
- Attach targets to a proper backdrop. It is illegal to deface or destroy trees, fences, water developments, signs, outbuildings or other objects on public lands.
- Pack out all litter, bullet casings and shotgun shell casings.



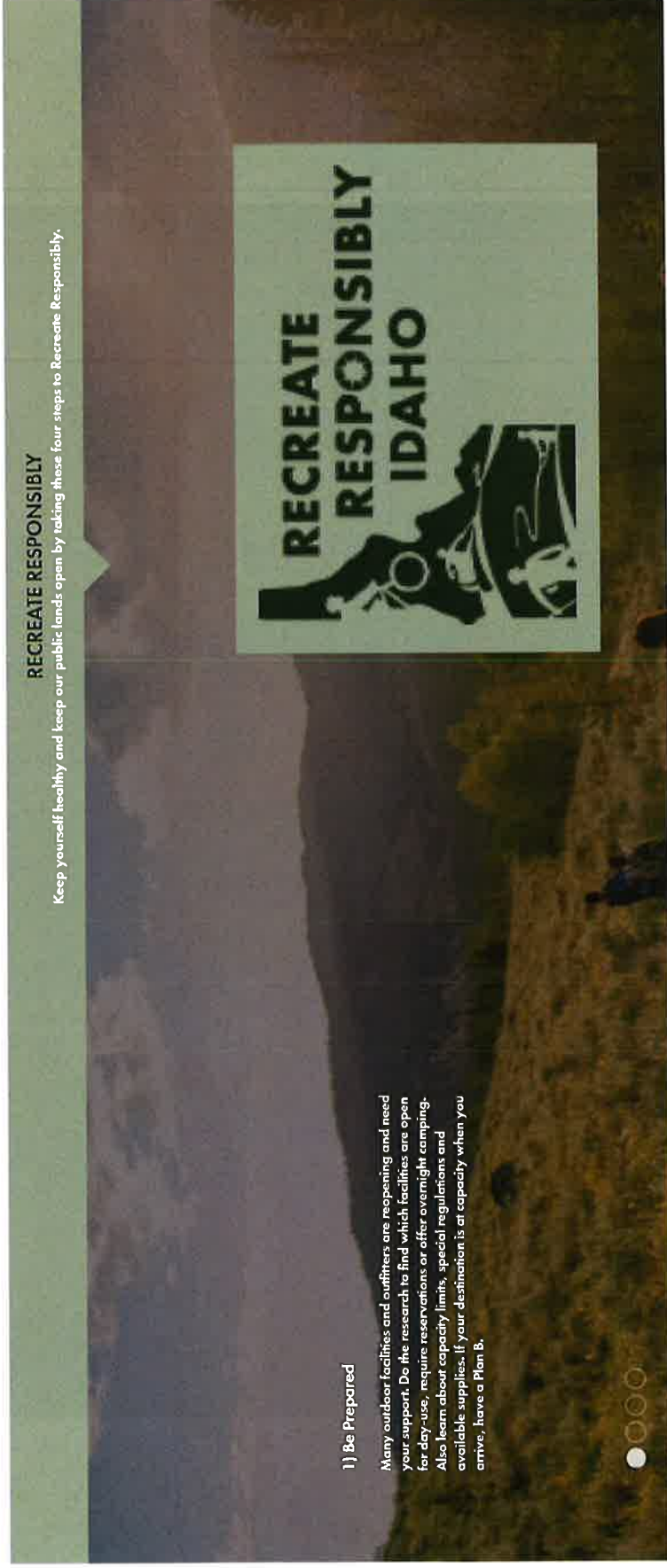
IDAHO

RANGELAND

Resources  Commission

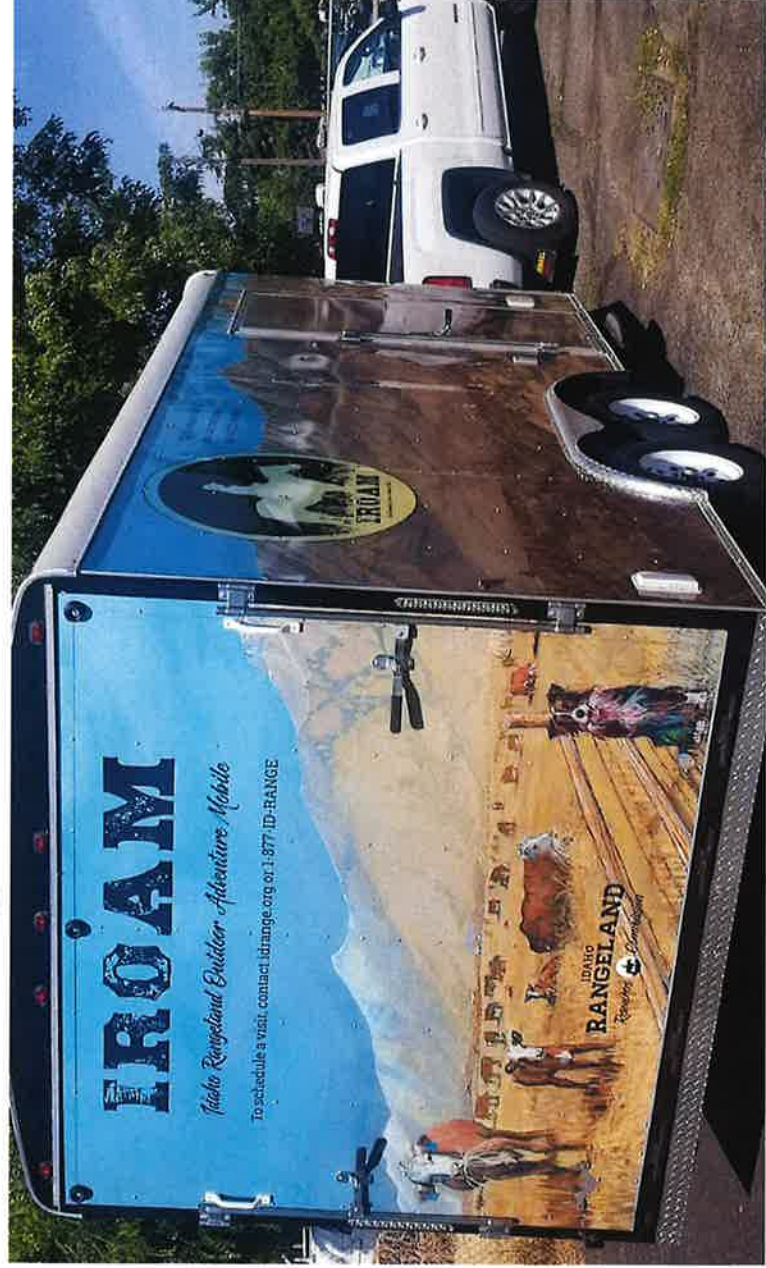
Partners in promoting sustainable rangelands because we all care.

Recreate Responsibly Idaho!



Partners in promoting sustainable rangelands because we all care.

Idaho Rangeland Outdoor Adventure Mobile



Partners in promoting sustainable rangelands because we all care.



Idaho Rangeland Outdoor Adventure Mobile





Target audience:

4th -6th Grade students

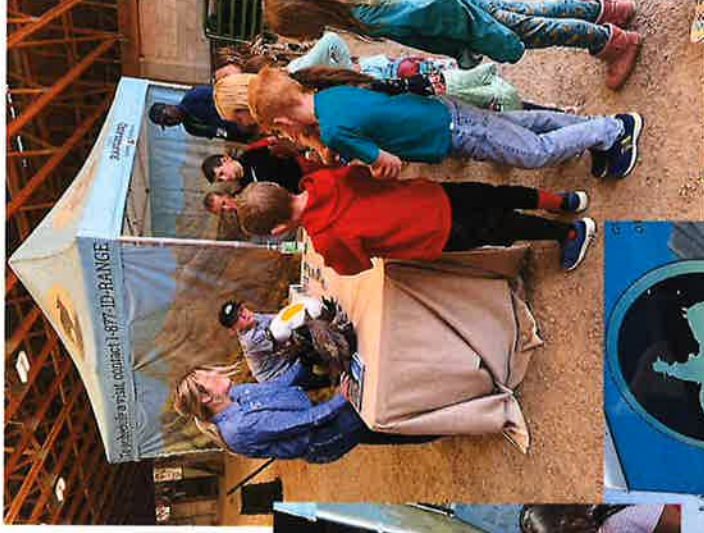
Content:

Rangeland through the seasons

Livestock grazing

Wildlife

Wildfire



IROAM Student Workbook

follows the interior exhibits
and activity counters



IROAM Interior Exhibit for Multiple Use

Rangeland is a **HOME** to animals and plants, a **WORK** place for some people and a **PLAY** ground for other people.



IRRC Educational Events

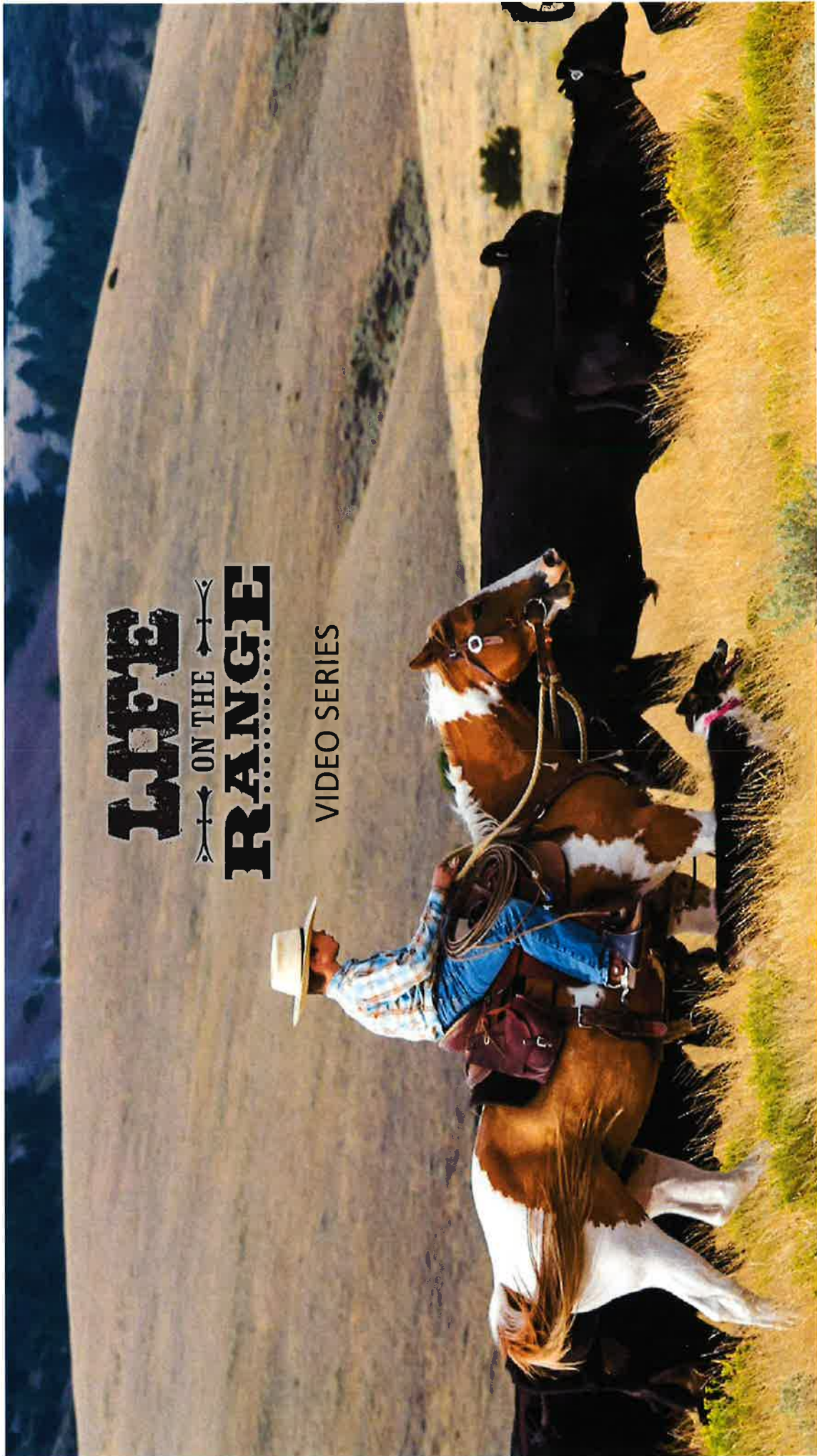


IRRC Educational Events



LOVE
ON THE
RANGE

VIDEO SERIES





Range Stories BY REGION

Choose a Category +



Choose a region to explore and learn about Idaho's Panopland.



SLM Paradigm Project seeks to break break fire cycle +

Southwest Idaho | Fire and Rehabilitation

SLM Paradigm project seeks to break repeated fire cycle in SW Idaho with aggressive fire therapy plan. Centers of range...

Read More +



Tempeted grazing with cattle to create fire breaks +

Southwest Idaho | Fire and Rehabilitation

SLM experiments with integrated grazing, using cattle to "mow" fire breaks in the Owyhee Front. The Bureau of Land Management...

Read More +



Range Monitoring Part 2 - Joint RLM-ASDA initiative to expand photo monitoring on rangelands +

Southwest Idaho | Land Management

In this, multi-agency partnership project over 100 Idaho ranchers to engage in range monitoring. More Idaho ranchers are getting involved in...

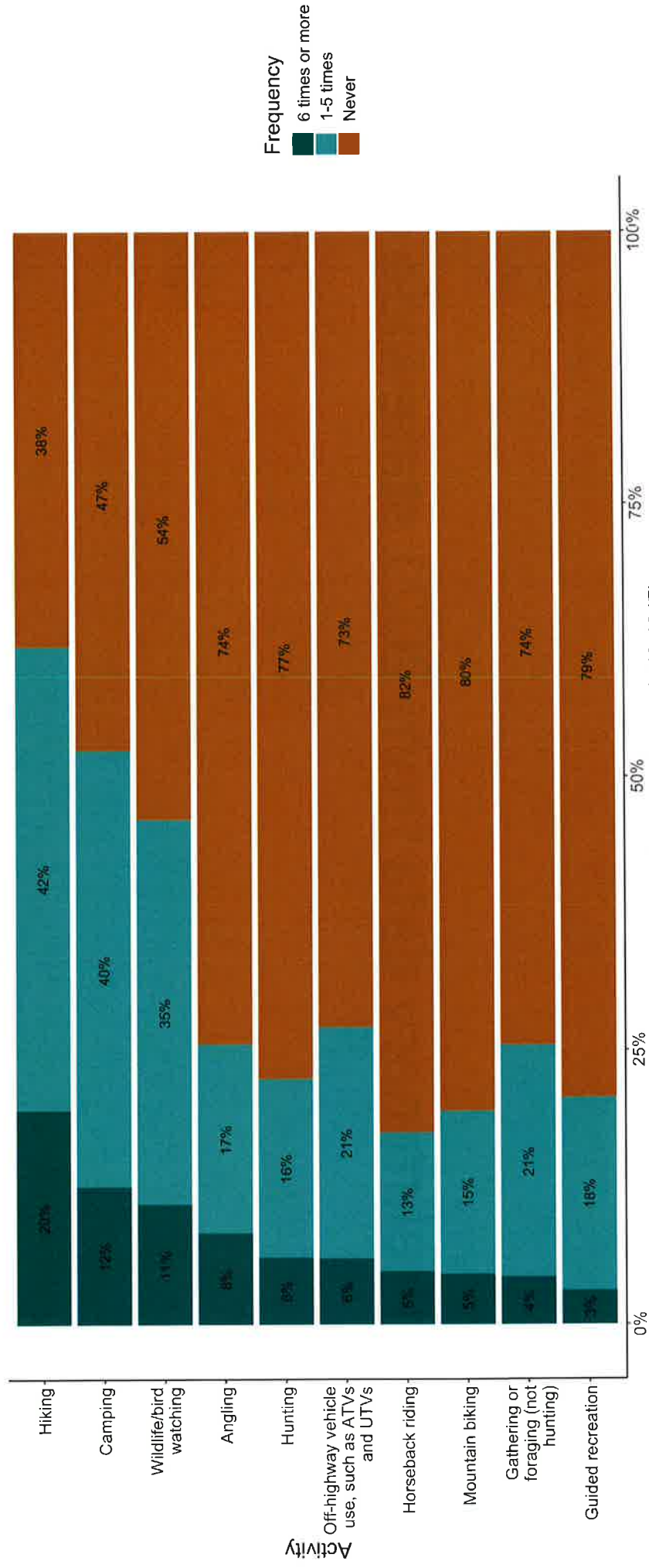
Read More +



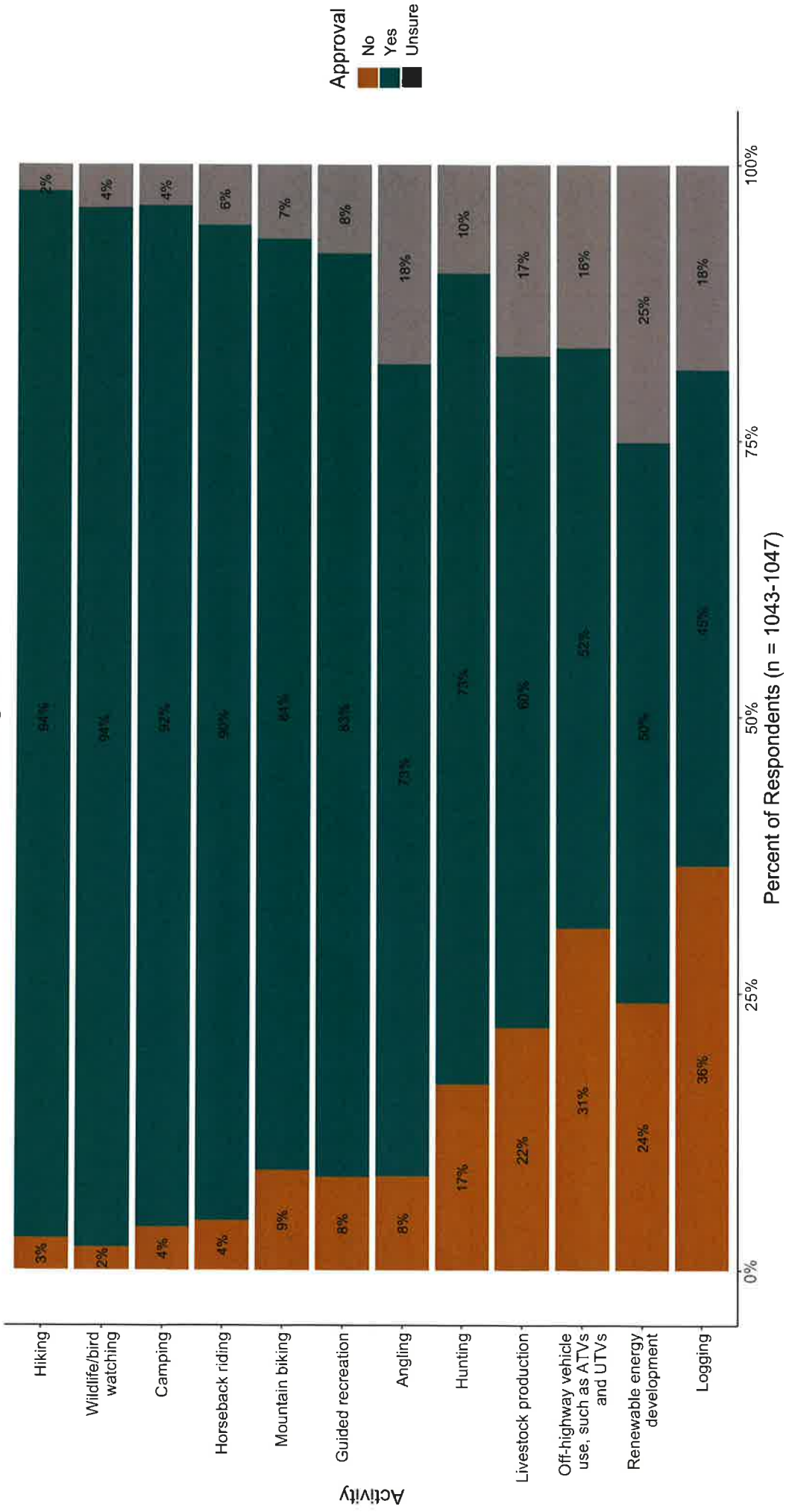
Preliminary data from 2021 statewide poll



Thinking of the last 12 months, how often did you engage in the following activities in Idaho's sagebrush landscapes?



Which of the following activities do you approve public lands being used for?



Approval of Public Lands Uses by Year

Use	% Approval ("Yes")		
	2010	2014	2021
Hiking/Camping*	99%	98%	93%
Mountain biking	90%	90%	84%
Guided recreation	95%	90%	83%
Angling/Hunting*	97%	95%	73%
Livestock production**	89%	90%	61%
OHV Use	67%	65%	53%
Renewable energy development***	75%	62%	51%
Logging	77%	71%	45%

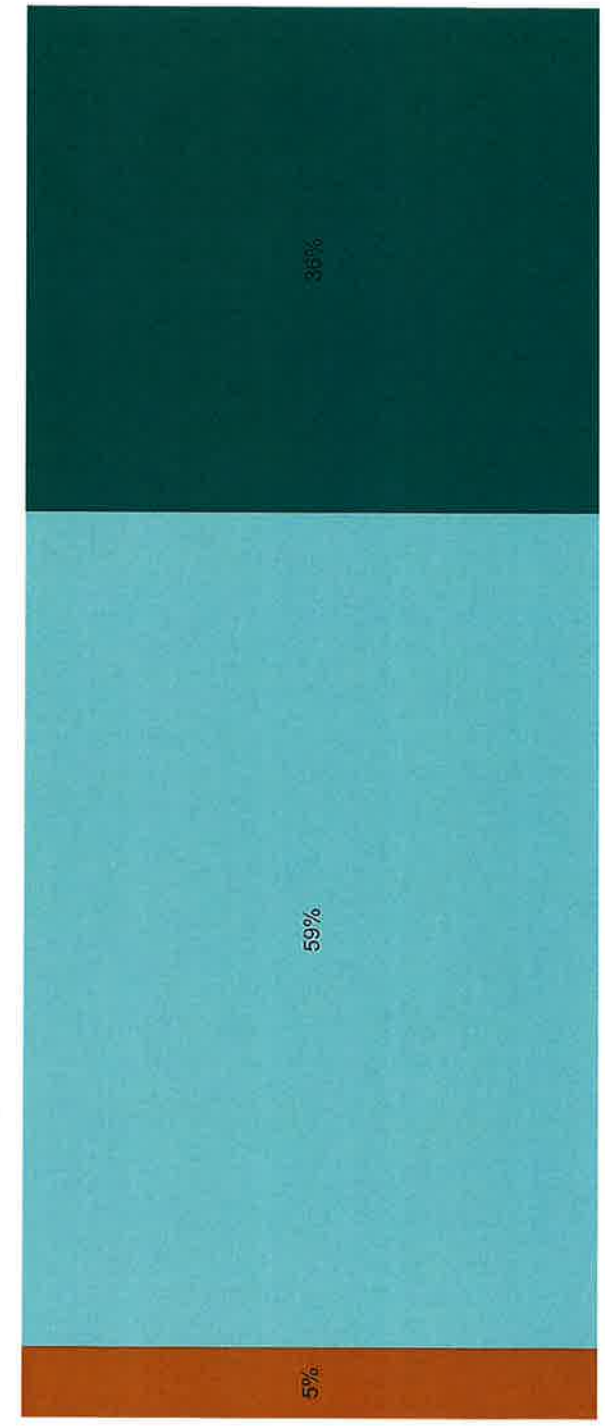


* Asked separately in 2021; 2021 percentage reflects the average of the two categories combined
 ** Changed from "Livestock grazing" for 2021
 *** Changed from "Energy Development & Transmission" for 2021

How would you describe your experience (when you encountered livestock on Idaho's rangelands)? (Asked of those who have encountered livestock on Idaho's rangelands.)

How would you describe your experience (when you encountered livestock on Idaho's rangelands)? (Asked of those who have encountered livestock on Idaho's Rangelands.)

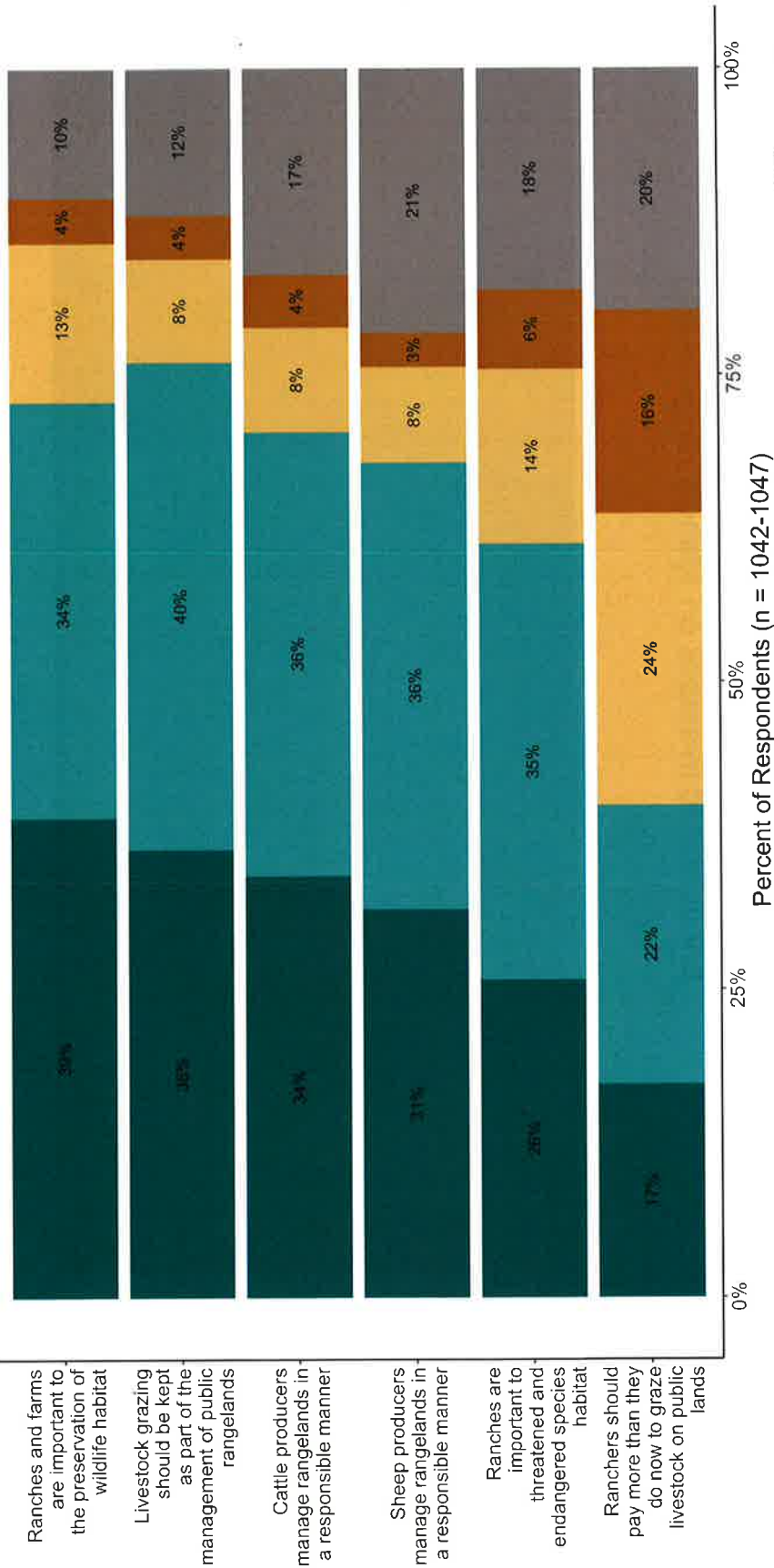
Response
 Negative
 Neutral
 Positive



0% 25% 50% 75% 100%
 Percent of Respondents (n = 693)



To what extent do you disagree or agree with the following statements about Idaho's rangelands?



Resources



Commission

Responsible Management by Year

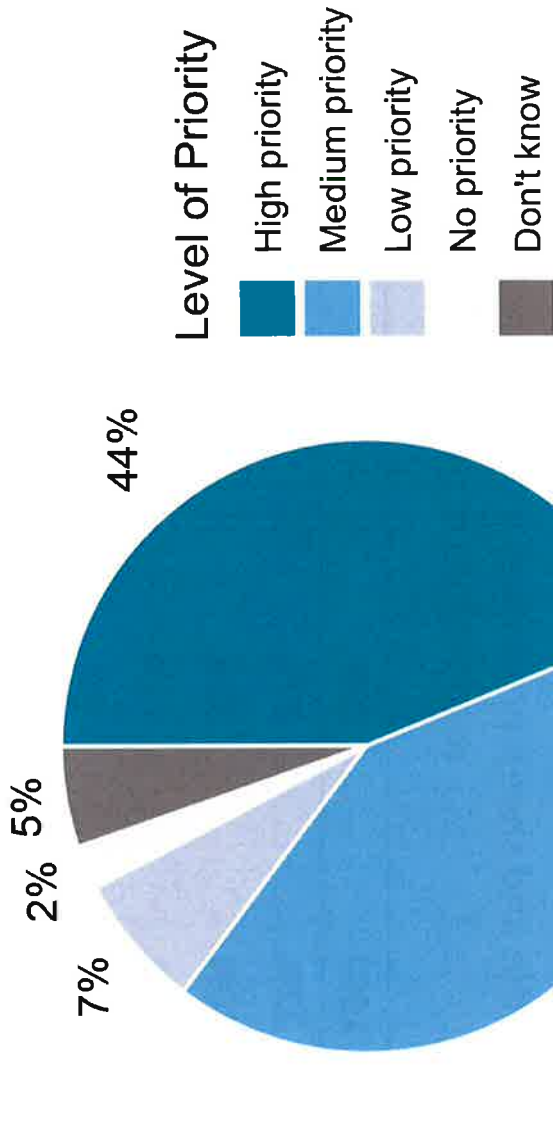
Cattle and sheep producers manage rangelands in a responsible manner.

Agreement	1997	2001	2010	2014	2021*
Strongly agree	22%	29%	30%	31%	32.5%
Somewhat agree	40%	39%	42%	48%	36%
Somewhat disagree	19%	13%	10%	7%	8%
Strongly disagree	11%	8%	5%	3%	3.5%
Don't know	8%	11%	14%	11%	19.5%

*Cattle and sheep producers were asked about separately in 2021; 2021 percentage reflects the combined percentage of the two

How much of a priority should the economic well-being of local communities be given when making decisions about public rangelands?

Percent of Respondents (n = 1048)



Acknowledgements

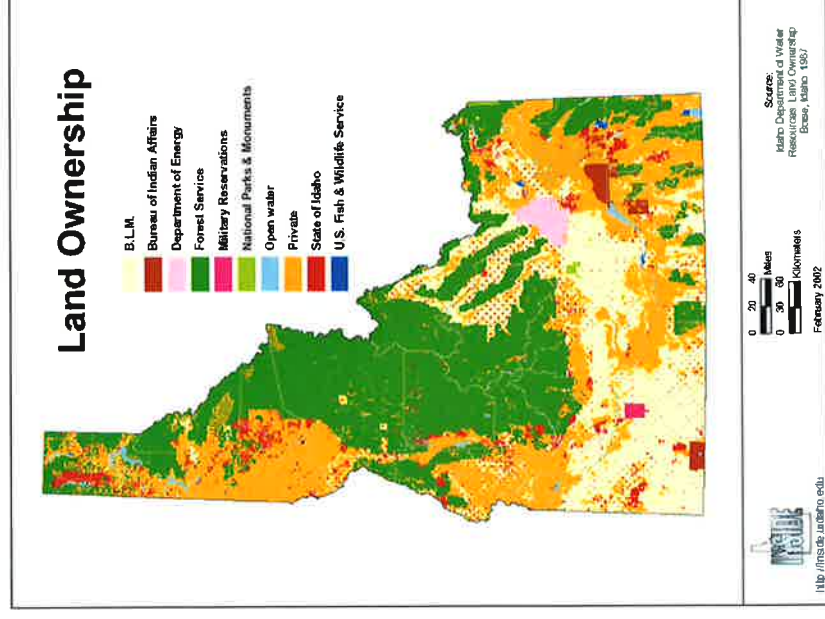


This project is supported by NSF award number OIA-1757324 from the NSF Idaho EPSCoR Program and by the National Science Foundation. The statewide survey is also supported through a partnership with the Idaho Rangeland Resources Commission. Data collection was provided by Responsive Management.



Partnerships are key!

- Idaho Cattle Association
- Idaho Farm Bureau
- Idaho Wool Growers Association
- University of Idaho
- Idaho State Dept of Ag
- BLM
- USFS
- Idaho S & W Conservation Commission
- S & W Conservation Districts
- Idaho FFA
- Schools—private and public



Partners in promoting sustainable rangelands because we all care.

IDAHO

RANGELAND



Resources

Commission

