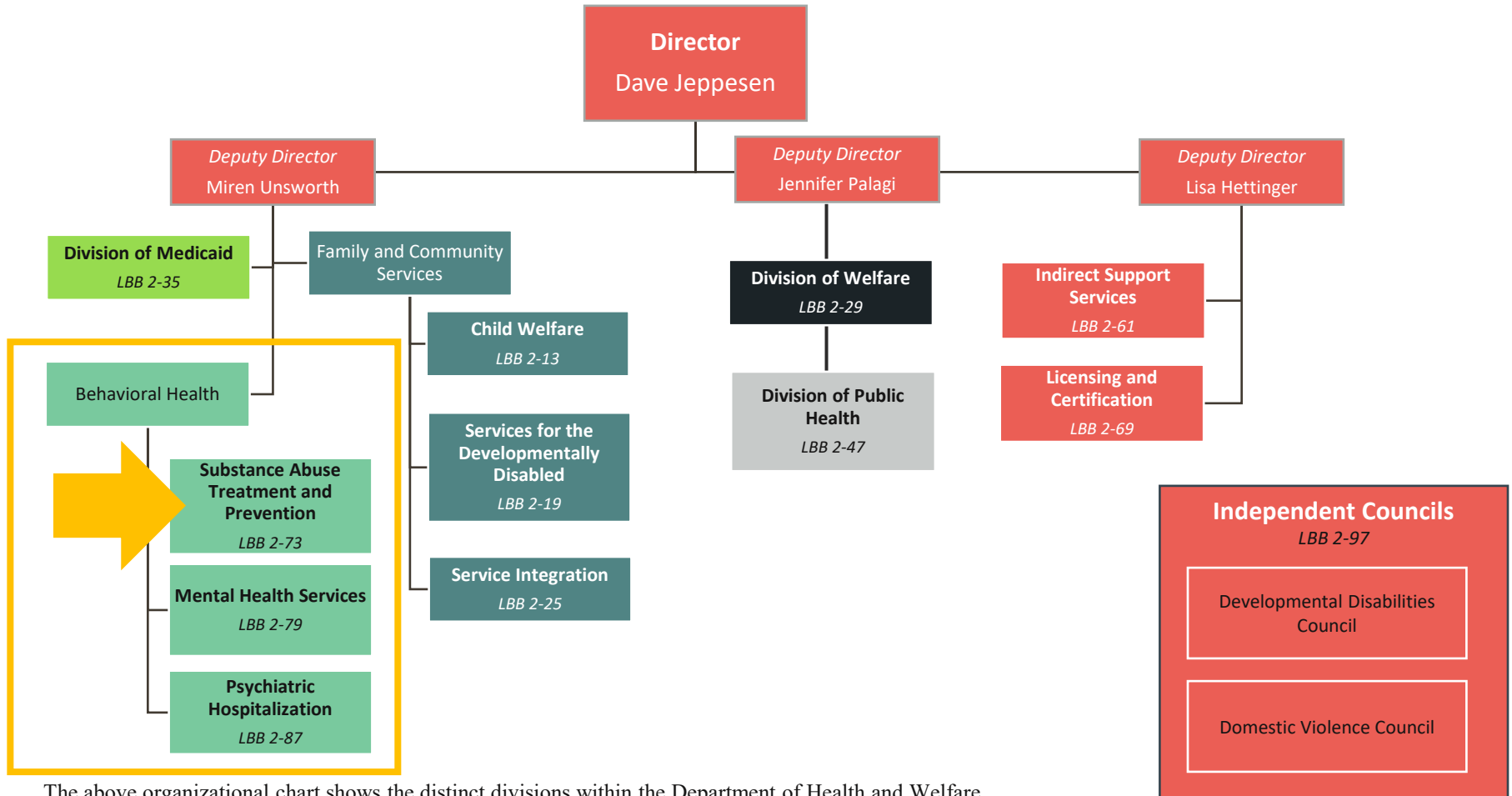




**Agency Summary & Statutory Authority**

The Idaho Department of Health and Welfare provides services and regulatory programs in partnership with taxpayers, consumers, and providers to promote economic well-being, support vulnerable children and adults, enhance public health, and encourage self-sufficiency. [Chapter 10, Title 56, Idaho Code]



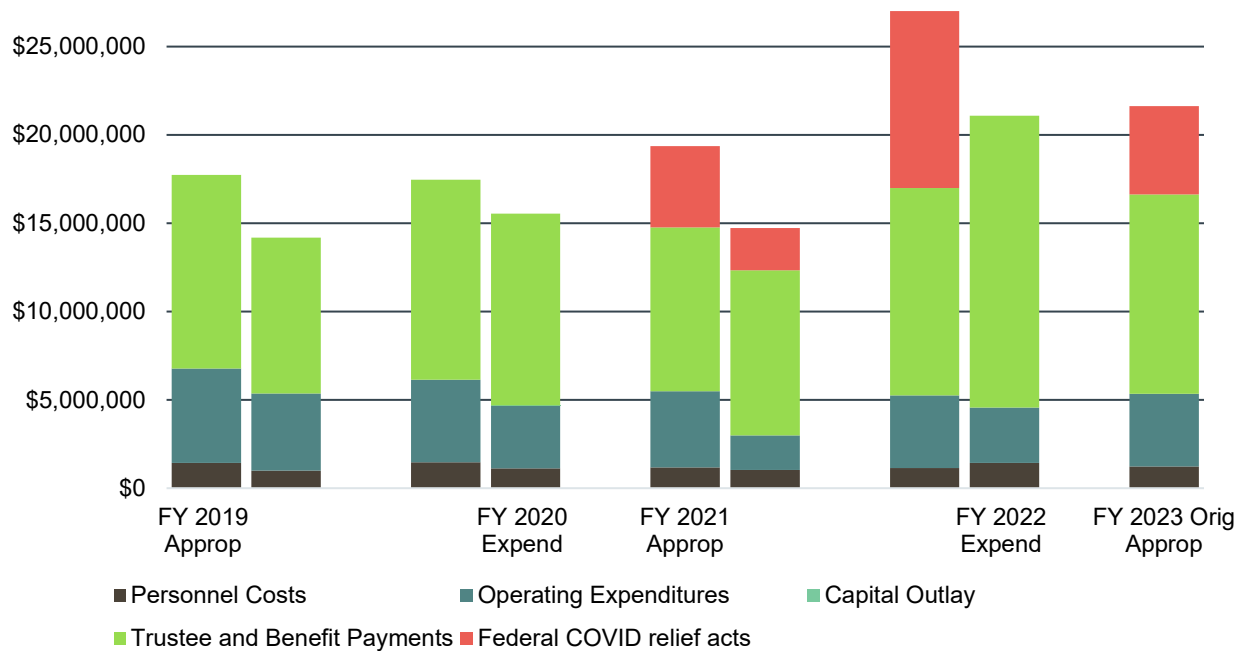
The above organizational chart shows the distinct divisions within the Department of Health and Welfare grouped by how they have traditionally appeared in appropriation bills together. All of the same shade appear in the same appropriation bill.



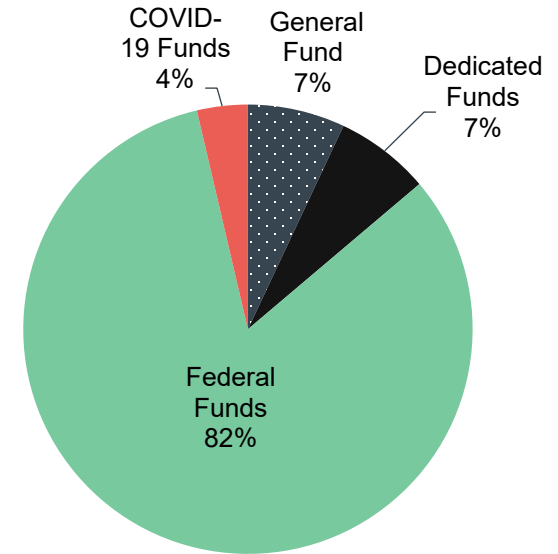
**Agency Summary & Statutory Authority**

The Substance Abuse Treatment and Prevention Program provides treatment services for children and adults. Until FY 2012, the Department of Health and Welfare also received an appropriation and managed services to the adult criminal justice population, the adolescent non-criminal justice and criminal justice populations, and Idaho Drug and Mental Health Courts. Services to these populations, and the associated funding, were transferred to the Department of Correction, the Department of Juvenile Corrections, and the Judicial Branch beginning in FY 2012.

**Total Appropriation and Actual Expenditures**



**4 year Average Total Appropriation**



The Substance Abuse Treatment and prevention program is authorized 16.00 FTP

- Services an programs funded by this program include:
  - Residential and outpatient substance use disorder (SUD) treatment; Recovery support services, including safe and sober housing, recovery coaching, drug testing; Management of a SUD provider network; Prevention; Support for SUD providers; and Tobacco retail inspections.
- COVID-19 Impacts
  - FY 2021: Non-cognizable increase from the CARES Act of \$2,300,000
  - FY 2022: Appropriation of \$8,264,000 from CRRSA (December 2020 act)

**Substance Abuse Average Vacancy Rates**

Fiscal Year	Authorized	Filled	Vacant	Percent
FY 2019	16.00	12.00	4.00	25.0%
FY 2020	15.92	12.83	3.08	19.4%
FY 2021	15.67	12.72	2.95	19.0%
FY 2022	16.01	15.27	0.74	4.6%
FY 2023	16.00	14.95	1.05	6.6%

\*FY 2023 includes data through December 2022