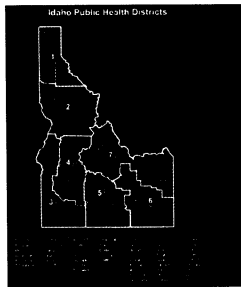


Local Public Health in Idaho

September 19, 2006

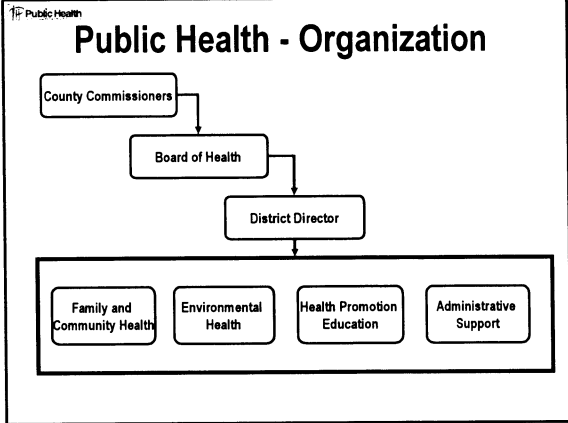
Carol Moehrle, District Director

Public Health Districts



Statutory Authority

- The Seven Public Health Districts were established by the 1970 Legislature to insure that preventive public health services are available to all citizens of the state throughout Idaho's 44 counties
- Title 39, Chapter 4, of the Idaho Code documents the consolidated statutes which govern the Health Districts



- Public Health
- ## Employees
- Nurses
 - Nurse Practitioners
 - Physicians
 - Environmental Health Specialists
 - Nutritionists
 - Health Education Specialists
 - Dental Hygienists
 - Information Technology Specialists
 - Administrators
 - Support Staff
 - Planners

- Public Health
- ## Idaho Public Health Why It Works So Well
- Local control and oversight
 - Timely consideration of local health issues
 - Local policy making boards address needs and oversee delivery of services

Health District Services

Epidemiology & Surveillance

- Communicable Disease Prevention & Control
- Disease Investigation
- Disease Surveillance
- Disease Education
- Food-borne Outbreaks



Health District Services

Health Education

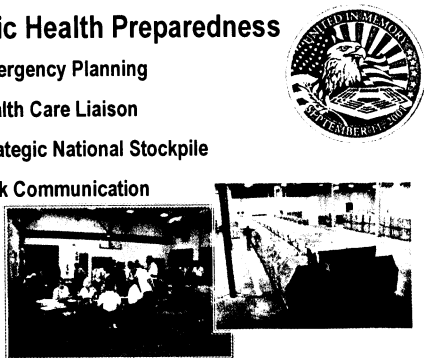
- Diabetes Prevention
- Injury Prevention
- Smoking Cessation/Tobacco Prevention
- Car Seat/Safety Belt Promotion
- Breast & Cervical Cancer Screening



Health District Services

Public Health Preparedness

- Emergency Planning
- Health Care Liaison
- Strategic National Stockpile
- Risk Communication



What's Missing in Our Current System: PREVENTION

- Integrate Mental HEALTH into primary care.
- There is a role for our medical providers in prevention and early detection.
- Initiate Substance Abuse PREVENTION programs during pregnancy.

PREVENTION

- Evidence – based programs that have proven outcomes.
- Ability to get maximum return on investment.
- Ability to PREVENT the cycle from occurring.

Public Health's Role

- ◆ Monitor MH/SA indicators
- ◆ Inform and educate the public
- ◆ Mobilize community partners
- ◆ Link people to needed services
- ◆ Assure a competent Public Health workforce to identify and refer clients.
