

GENERAL FUND REVENUE FORECAST: 2010-2012

SCOTT BENSON - ISU

DON HOLLEY - BSU

ERIC STUEN - UI

GENERAL FUND REVENUE

(MILLIONS OF \$)

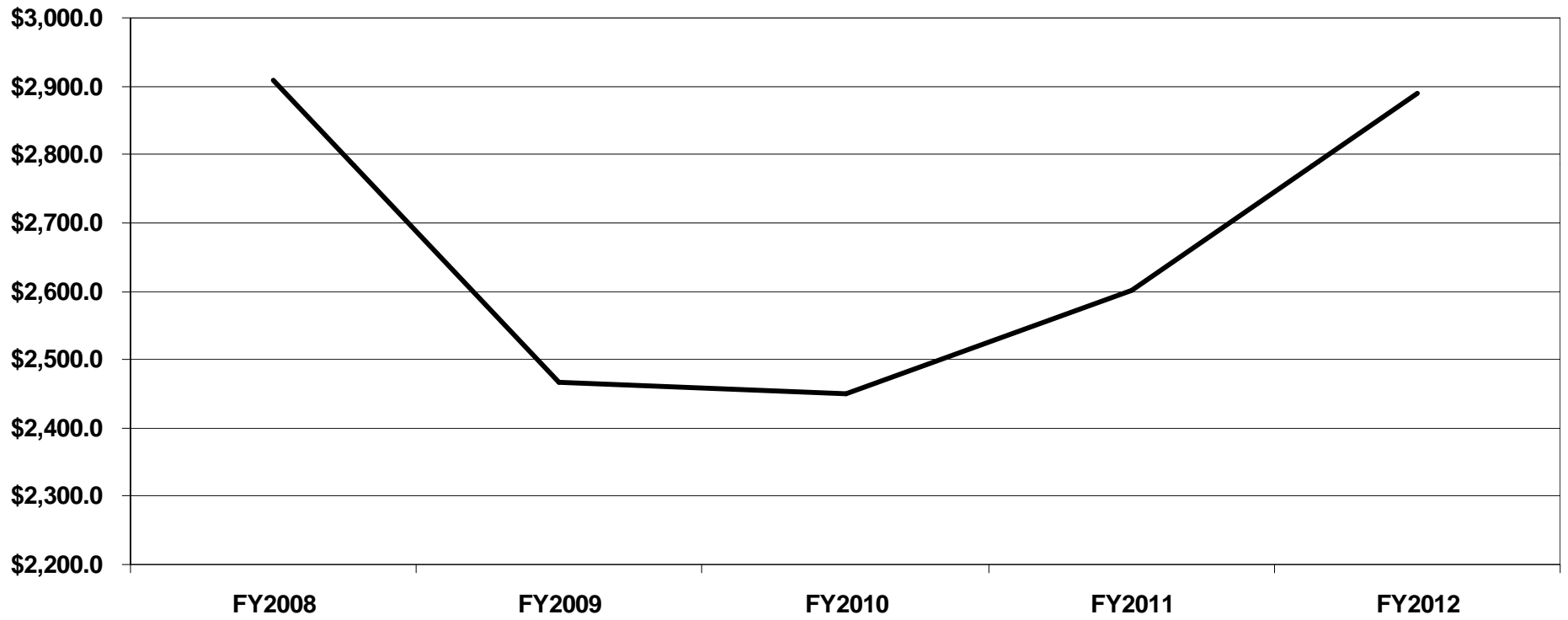
	FY2008	FY2009	FY2010	FY2011	FY2012
INDIVIDUAL INCOME TAX	\$ 1,430.2	\$ 1,168.1	\$ 1,142.4	\$ 1,231.6	\$ 1,427.3
% CHANGE		-18.3%	-2.2%	7.8%	15.9%
CORPORATE INCOME TAX	\$ 189.3	\$ 141.2	\$ 155.6	\$ 165.7	\$ 181.6
% CHANGE		-25.4%	10.2%	6.5%	9.6%
SALES TAX	\$ 1,142.5	\$ 1,022.8	\$ 1,006.0	\$ 1,050.3	\$ 1,110.2
% CHANGE		-10.5%	-1.6%	4.4%	5.7%
CIGARETTE TAX	\$ 6.5	\$ 7.8	\$ 16.9	\$ 14.4	\$ 13.9
TOBACCO TAX	\$ 7.2	\$ 7.4	\$ 7.4	\$ 7.8	\$ 8.3
BEER TAX	\$ 2.2	\$ 2.0	\$ 2.0	\$ 2.0	\$ 2.1
WINE TAX	\$ 2.6	\$ 3.3	\$ 2.8	\$ 3.0	\$ 3.1
LIQUOR SURCHARGE	\$ 8.4	\$ 9.3	\$ 13.6	\$ 16.0	\$ 18.2
PRODUCT TAXES	\$ 26.8	\$ 29.8	\$ 42.7	\$ 43.2	\$ 45.6
% CHANGE		11.1%	43.3%	1.2%	5.6%
KILOWATT-HOUR TAX	\$ 1.6	\$ 2.0	\$ 2.0	\$ 2.0	\$ 2.0
MINE LICENSE TAX	\$ 2.5	\$ 0.6	\$ 0.6	\$ 0.6	\$ 0.6
INTEREST EARNINGS	\$ 11.4	\$ 3.0	\$ 0.7	\$ 1.6	\$ 7.0
COURT FEES AND FINES	\$ 5.1	\$ 5.4	\$ 5.5	\$ 5.5	\$ 5.5
INSURANCE PREMIUM TAX	\$ 56.3	\$ 55.5	\$ 56.2	\$ 59.8	\$ 65.2
ALCOHOLIC BEVERAGE LICENSES	\$ 1.9	\$ 1.6	\$ 1.6	\$ 1.6	\$ 1.7
UCC FILINGS	\$ 2.9	\$ 2.4	\$ 2.6	\$ 2.7	\$ 3.1
UNCLAIMED PROPERTY	\$ 5.6	\$ 3.3	\$ 2.8	\$ 3.0	\$ 3.1
MISC REV & TRANSFERS	\$ 33.1	\$ 30.9	\$ 31.4	\$ 33.5	\$ 36.7
MISC REVENUE	\$ 120.4	\$ 104.7	\$ 103.4	\$ 110.3	\$ 124.9
% CHANGE		-13.0%	-1.3%	6.7%	13.2%
TOTAL GENERAL FUND	\$ 2,909.2	\$ 2,466.6	\$ 2,450.1	\$ 2,601.1	\$ 2,889.6
% CHANGE		-15.2%	-0.7%	6.2%	11.1%

January

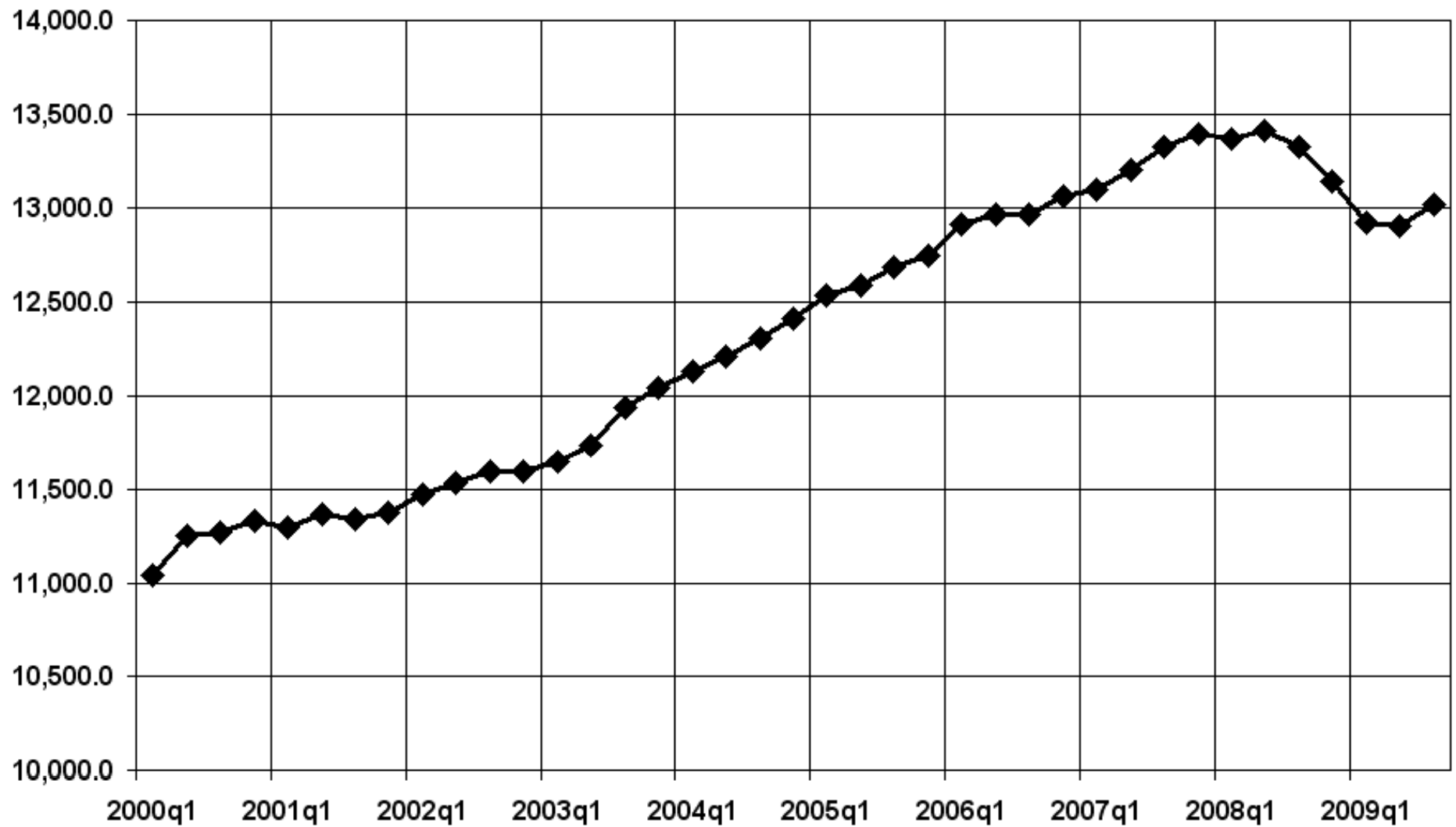
2010

	PROJECTED REVENUE														
	Fiscal Year 2009	Fiscal Year 2010					Fiscal Year 2011					Fiscal Year 2012			
		Governor August Revised	Universities	Tax Comm- m- ci	so- ciated Tax	Com- mittee Me-	Universities	Tax Com- m- ci	so- ciated Tax	Com- mittee Me-	Universities	Tax Com- m- ci	so- ciated Tax	Com- mittee Me-	
Individual Income Tax	\$1,167.9	\$1,137.2 (2.6%)	\$1,142.4 (2.2%)				\$1,231.6 7.8%				\$1,427.3 15.9%				
Corporate Income Tax	141.0	132.1 (6.3%)	155.6 10.2%				165.7 6.5%				181.6 9.6%				
Sales Tax	1,022.2	963.3 (5.8%)	1,006.0 0.2%				1,050.3 4.4%				1,110.2 5.7%				
Product Taxes	29.7	40.7 36.8%	1,161.7 43.3%				1,216.2 1.2%				1,292.1 5.6%				
Miscellaneous Revenue	104.7	104.0 (0.7%)	3,466.2 (1.3%)				3,664.0 6.7%				4,011.6 13.2%				
Total Gen. Fund Revenues	\$2,465.6	\$2,377.3	\$6,931.9				\$7,327.8				\$8,022.8				
Dollar Change		(\$88.3)	(\$58.8)				\$396				\$695				
Percent Change		(3.6%)	(0.8%)				5.7%				9.5%				

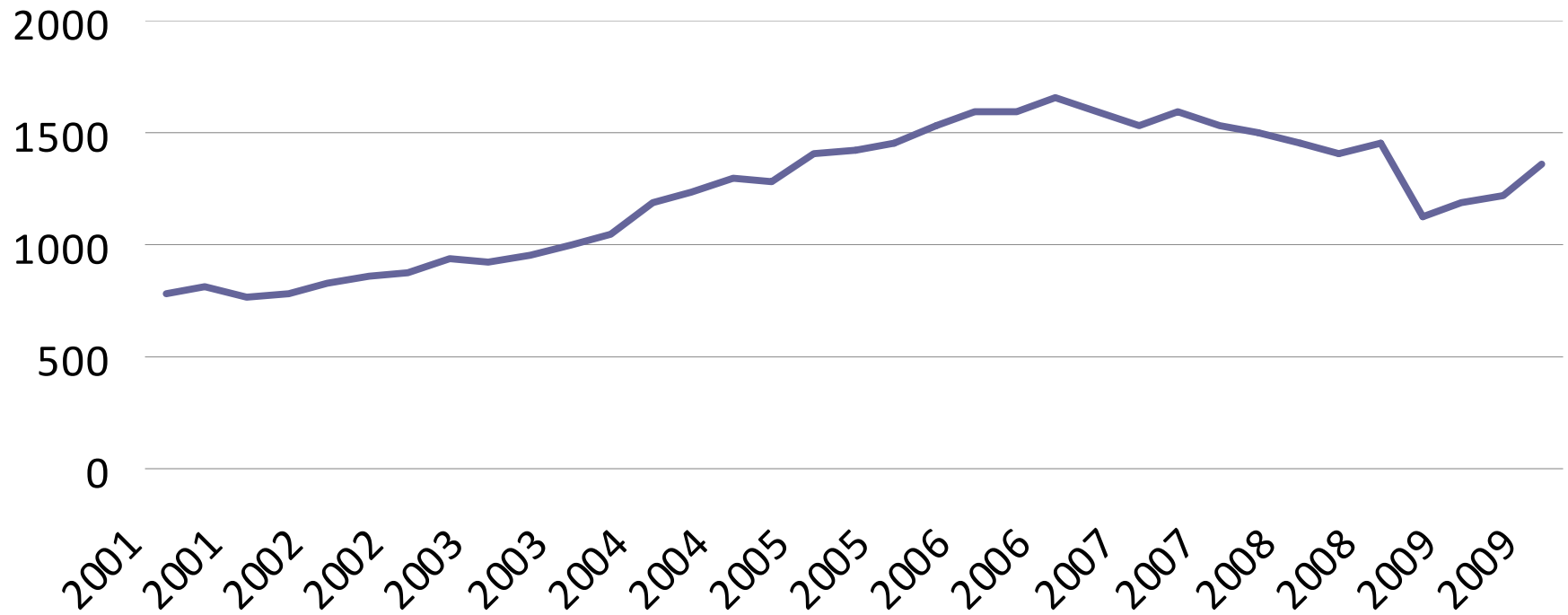
IDAHO GENERAL FUND REVENUE THROUGH FY2012
(MILLIONS OF DOLLARS)



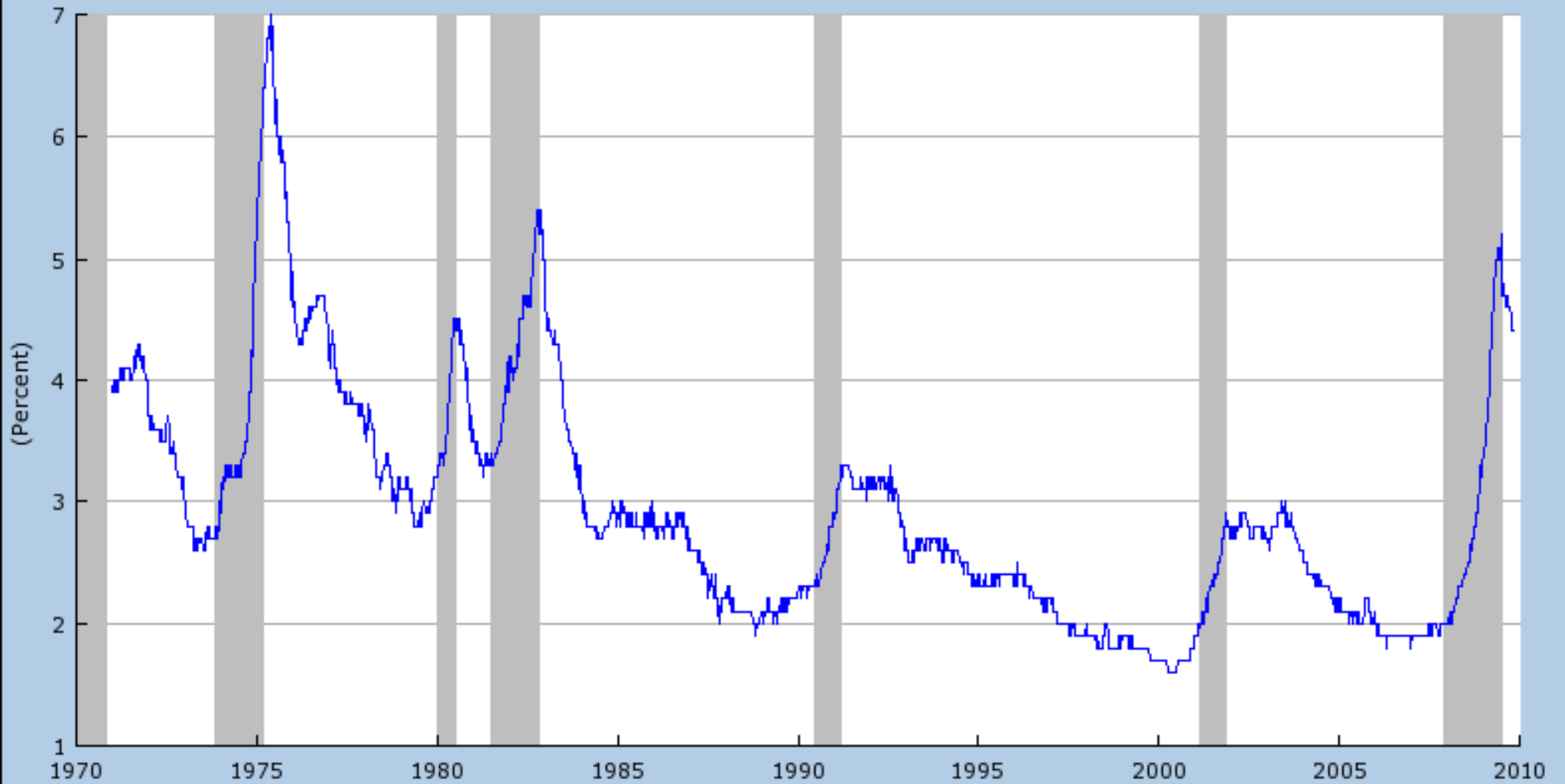
GDP in billions of chained 2005 dollars



National Corporate Profits, \$billion

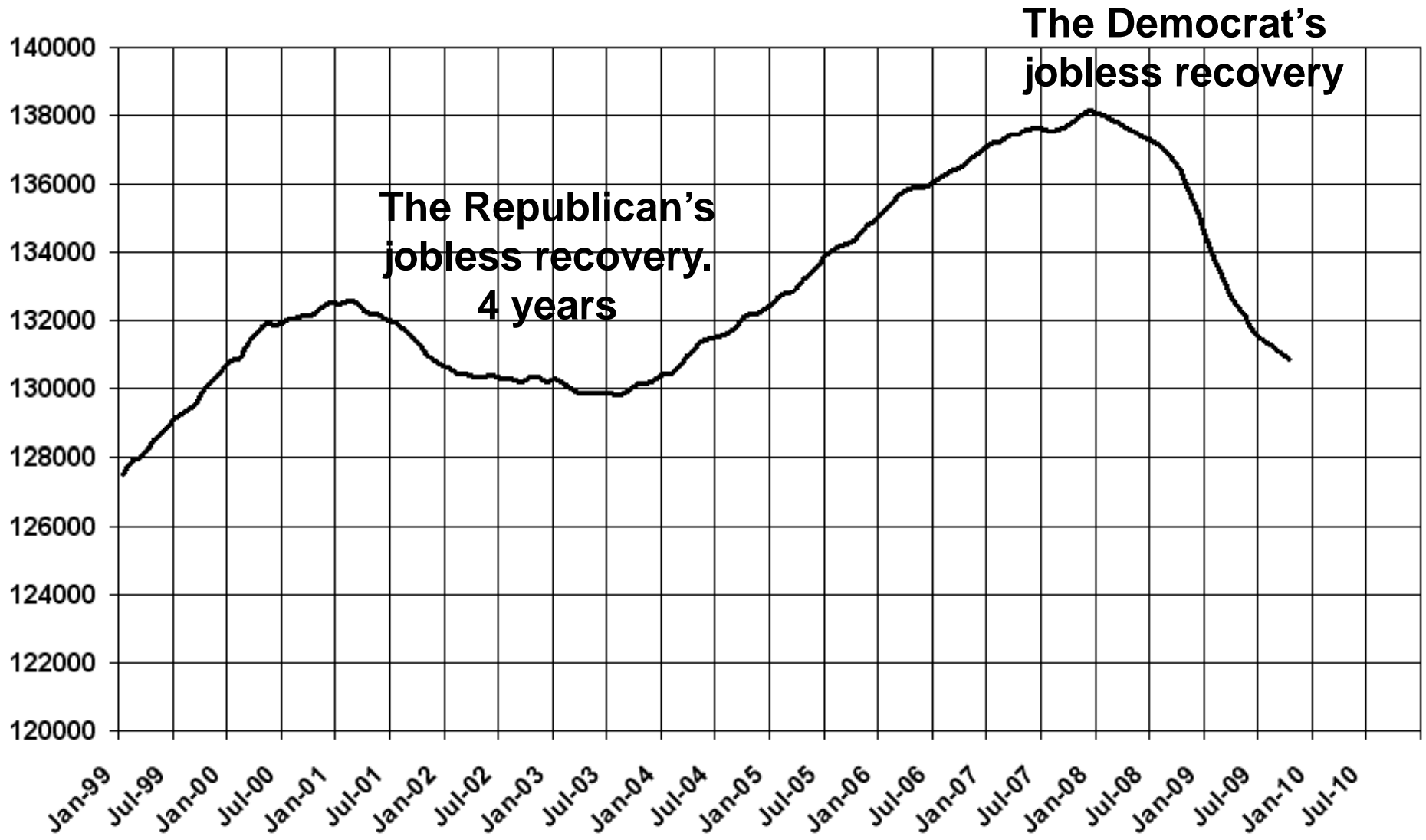


Insured Unemployment Rate (IURSA)
Source: U.S. Department of Labor: Bureau of Labor Statistics

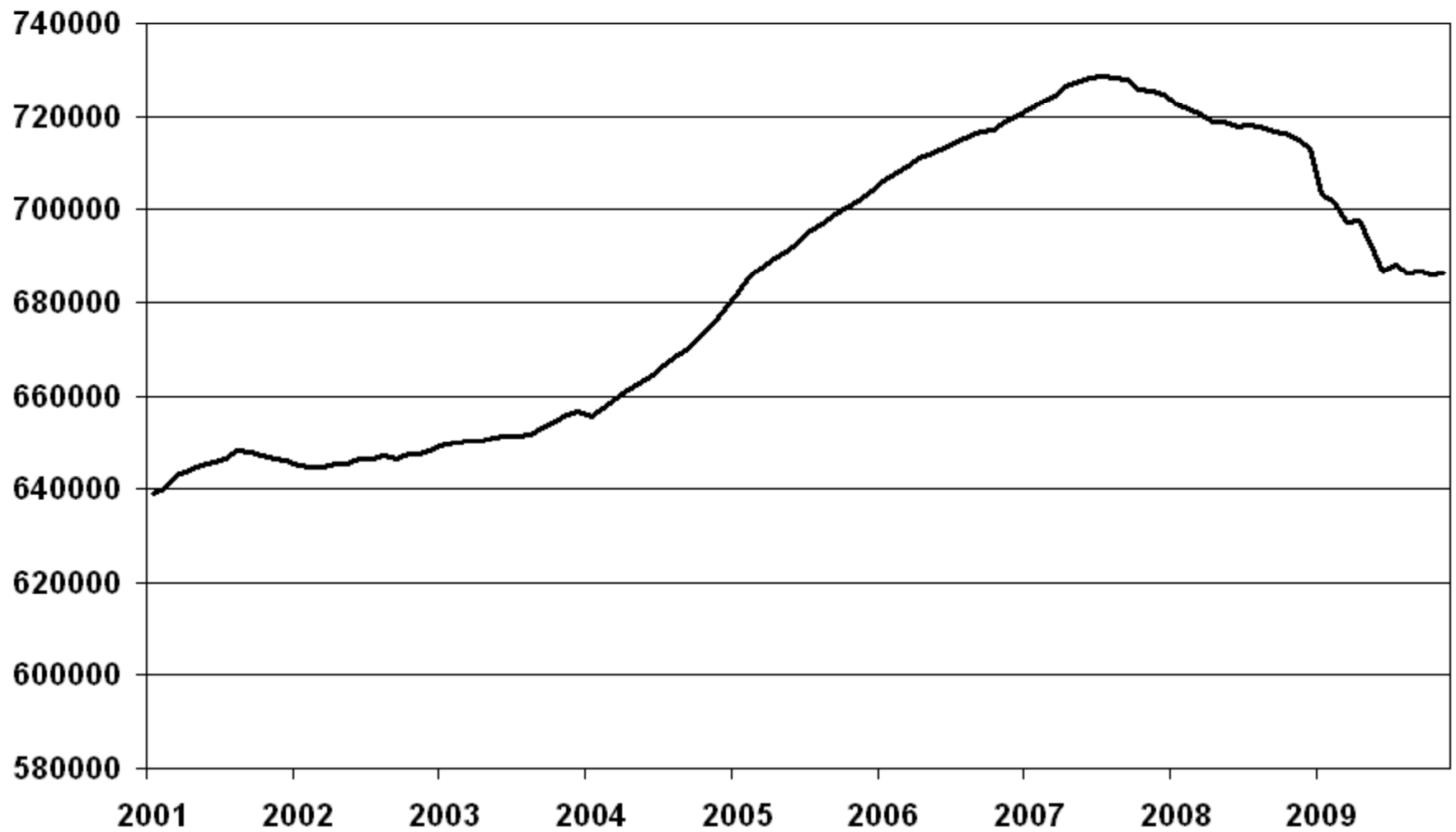


Shaded areas indicate US recessions.
2009 research.stlouisfed.org

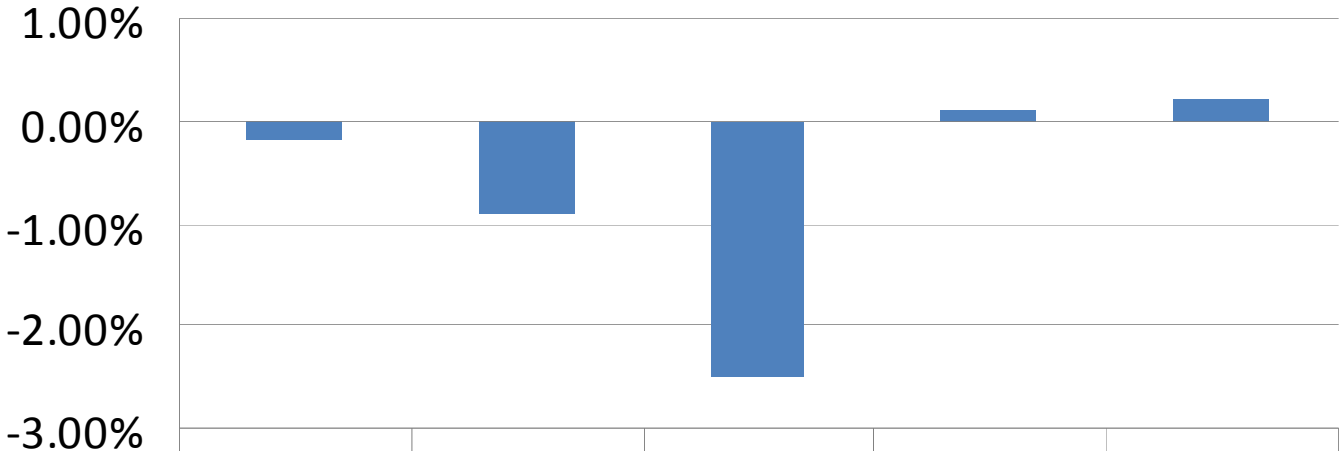
U.S. Employment



IDAHO NON-FARM EMPLOYMENT



Idaho Personal Income Growth



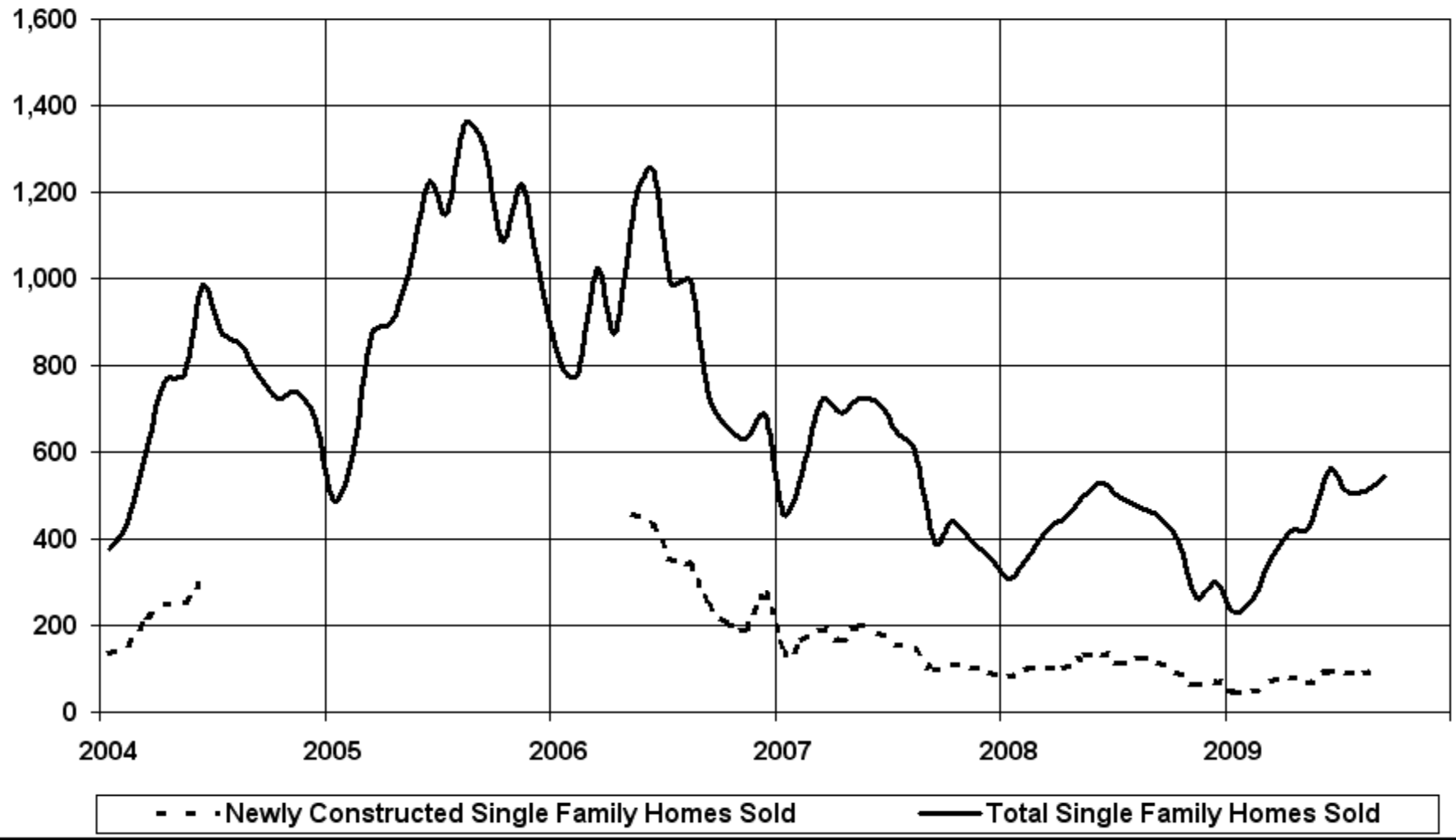
	3	4	1	2	3
	2008	2008	2009	2009	2009
■ Idaho Personal Income Growth	-0.20%	-0.90%	-2.50%	0.10%	0.20%

Single Family Permits



Ada County Real Estate

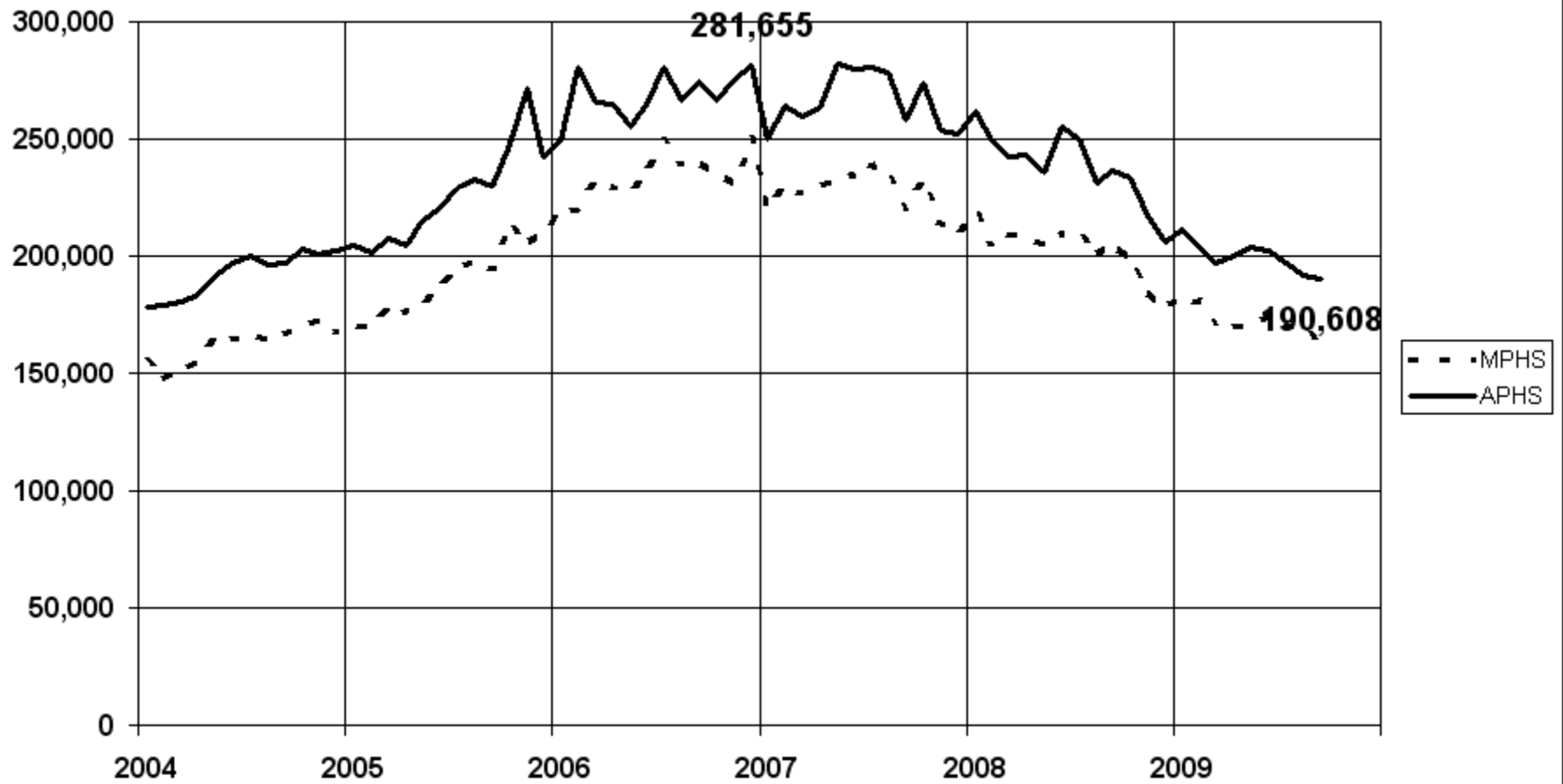
(Source: Intermountain MLS)



SINGLE FAMILY HOMES LISTED AND SOLD: ADA COUNTY



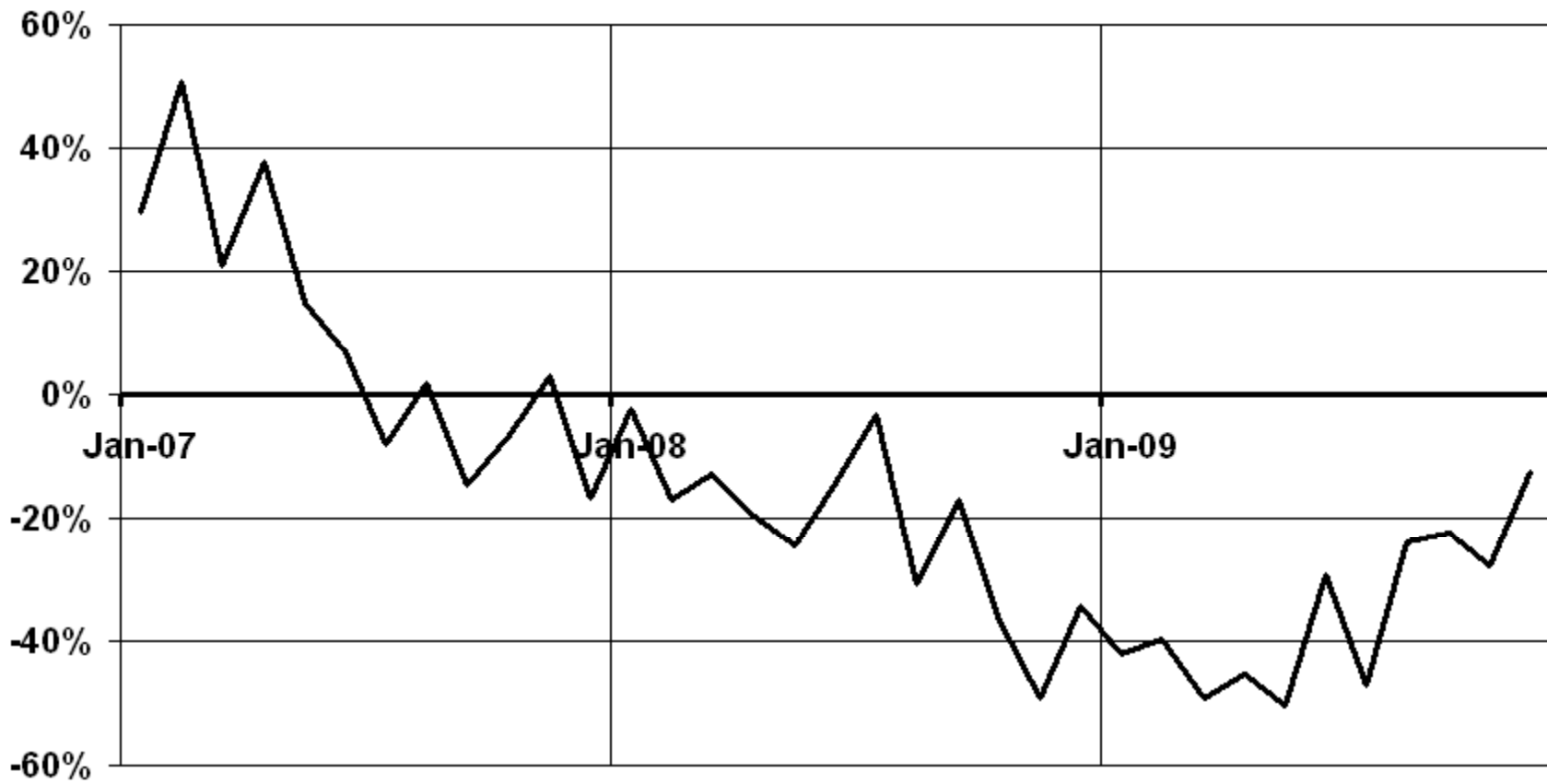
Median and Average Prices of Homes Sold in Ada County



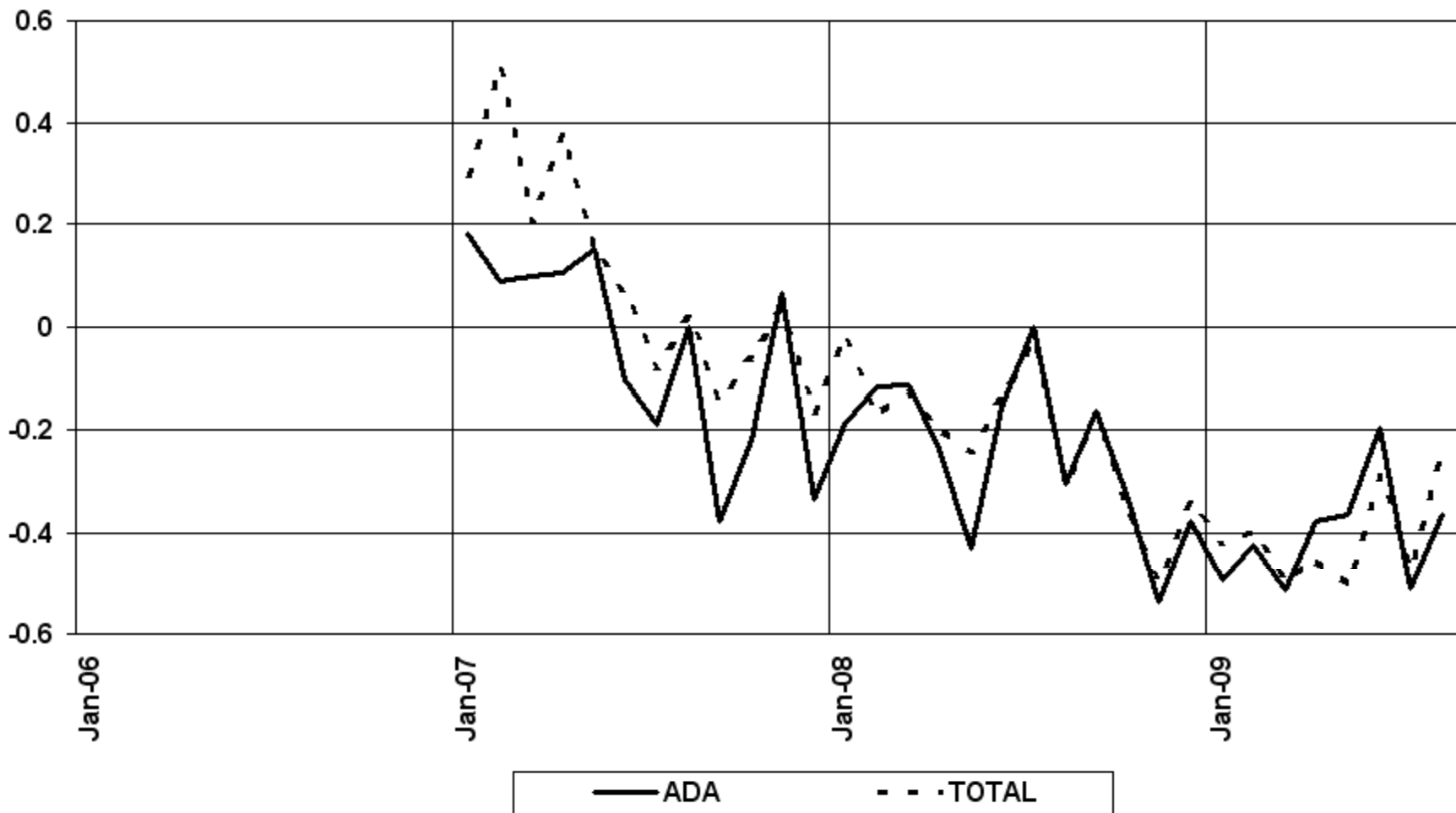
	Oct 2009	% Chg from Oct'08	YTD 2009	% Chg from YTD 2008	
Cars	431,487	0.8	4,598,806	-23.4	
Midsize	221,357	9.6	2,190,471	-21.2	
Small	130,282	-6.2	1,641,116	-23.4	
Luxury	71,540	-8.5	692,662	-28.4	
Large	8,308	-8.4	74,557	-35.3	
Light-duty trucks	406,565	-0.9	4,053,883	-27.6	
Pickup	125,898	-7.6	1,171,434	-32.5	
Cross-over	162,757	19.2	1,650,988	-11.8	
Minivan	45,852	-17.3	487,008	-34.1	
Midsize SUV	27,591	-30.7	321,917	-48.9	
Large SUV	23,598	39.6	180,911	-38.5	
Small SUV	9,678	-23.3	151,771	-16.8	
Luxury SUV	11,191	-11.1	89,854	-37.9	

New Car Sales in Idaho

(percentage change year ago)



New Car Sales: Statewide and Ada County (Percentage change year ago)



NET WORTH OF HOUSEHOLDS AND NON-PROFITS IN BILLIONS OF \$

**FROM THE 2ND QUARTER 2007 TO THE 3RD QUARTER 2008,
HOUSEHOLDS LOST OVER \$13 TRILLION**

2003	\$46,902.1
2004	\$52,494.0
2005	\$58,823.3
2006	\$63,334.9
2007	\$63,910.6
2008 QTR 1	\$61,452.2
2008 QTR 2	\$60,577.8
2008 QTR 3	\$57,824.7
2008 QTR 4	\$52,917.3
2009 QTR 1	\$51,141.5
2009 QTR 2	\$53,139.9

SOURCE: FEDERAL RESERVE, FLOW OF FUNDS