

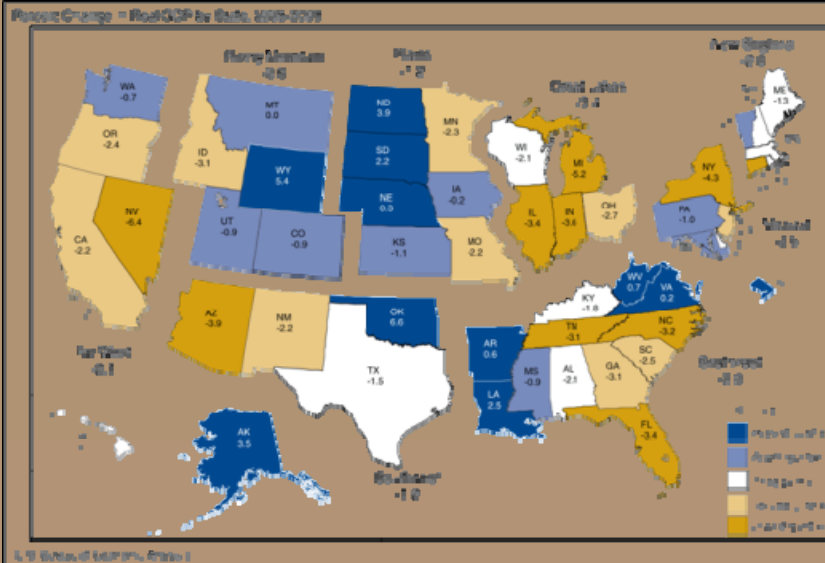
STATE OF
IDAHO
U.S.A.

Economic Outlook &
Revenue Assessment
Committee

January 7, 2011

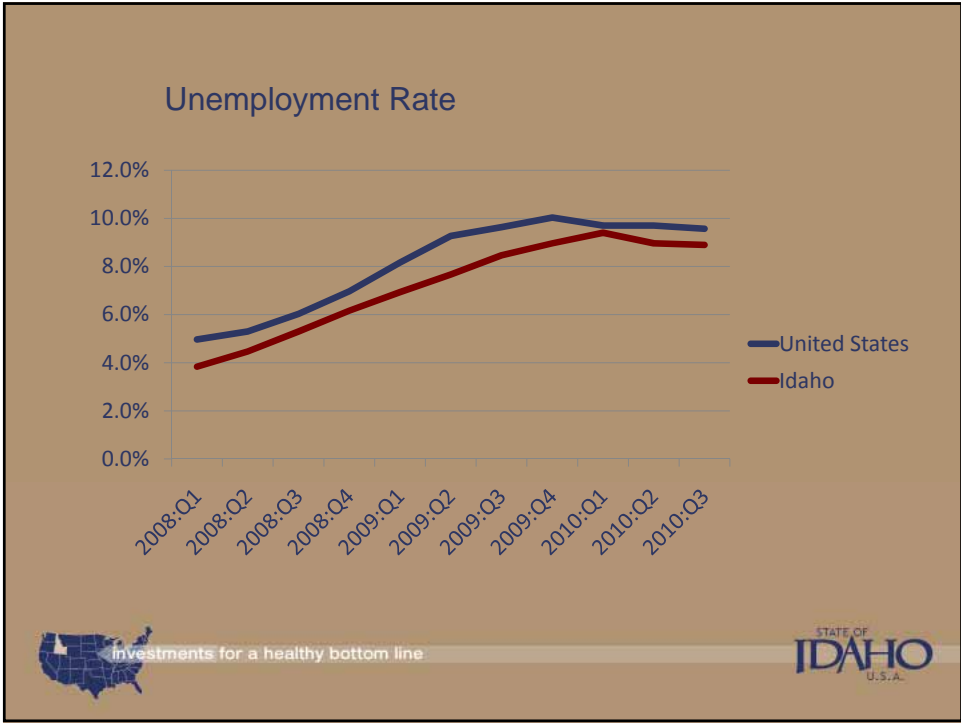


Investments for a healthy bottom line



Investments for a healthy bottom line





Primary Economic Drivers

- Consumer Demand
- Tight Credit Markets
- Corporate Jitters



Investments for a healthy bottom line

STATE OF
IDAHO
U.S.A.

EB-5 Immigrant Investment Program

- Permits a foreign citizen to invest at least \$500,000 in a U.S. business. If they create 10 permanent, full-time jobs the investor and their immediate family are granted permanent U.S. residency.
- 2 approved centers
 - Idaho State Regional Center
 - Invest Idaho Innovation



Investments for a healthy bottom line

STATE OF
IDAHO
U.S.A.

Small Business Innovative Research Grants

- \$141,495 awarded to 53 Idaho businesses
- \$8,656,384 in research grants/contracts awarded to Idaho companies from the federal government
- \$61.18 brought into Idaho for every \$1 spent by the state
- Created a total of 38 direct jobs with an average salary of \$64,079 annually



Investments for a healthy bottom line

STATE OF
IDAHO
U.S.A.

Procurement Technical Assistance Center

- FY ending October 2008
 - Clients: **906**
 - Awards: **1174**
 - Amount of Awards: **\$92,105,726**
- FY ending October 2009
 - Clients: **1016**
 - Awards: **2033**
 - Amount of Awards: **\$186,369,796**
- FY ending October 2010
 - Clients: **1229**
 - Awards: **1635**
 - Amount of Awards: **\$124,105,870**



(The decline in awards & amounts due to ending ARRA programs)



Investments for a healthy bottom line

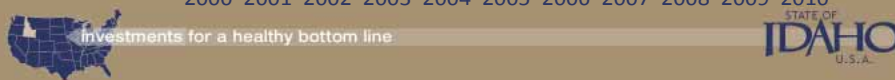
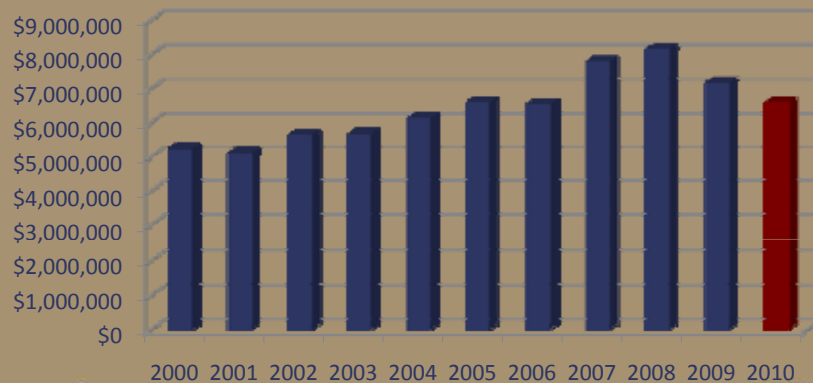
STATE OF
IDAHO
U.S.A.

Community Development Block Grants

- Currently 79 open federal and state block grant projects
- Increase in demand for Job Creation Projects
 - Current Year Projects
 - City of Burley/Gem State Processing
 - City of Greenleaf/Air Ranch
 - Bonneville County/Areva
- Current CDBG Demand (federal)
 - 26 applications requesting \$12,308,131 (Last Year 20-\$7,937,169)
- CDBG-Recovery Funds
 - 4 water projects, 1 sewer project
 - Over 75% of the \$2.3 million has been expended



2% Lodging Tax Collections



Tourism

- In 2008, tourism contributed 6% (\$3.5 billion) to the Idaho Gross State Product
- 26,000 direct jobs, \$495.1 million in payroll (2008)
- Every dollar generated from the 2% lodging tax equals 3 additional dollars to the general fund
 - FY10: \$6.26 million in lodging tax = \$18.8 million to the general fund in sales tax



Investments for a healthy bottom line

STATE OF
IDAHO
U.S.A.

Pipeline

- Currently stands at 99 companies
 - 20% International Companies
 - 40% Advanced Manufacturing
 - 20% Renewable Energy Manufacturing
 - 15% Other High-Tech

Leads & Site Visits

- FY10 -125 leads (double FY09)
- In FY10 we had a record 25 site visits
 - 9 in FY09, 8 in FY08
- So far in FY11 we have 46 leads and 20 site visits



Investments for a healthy bottom line



Recent Wins

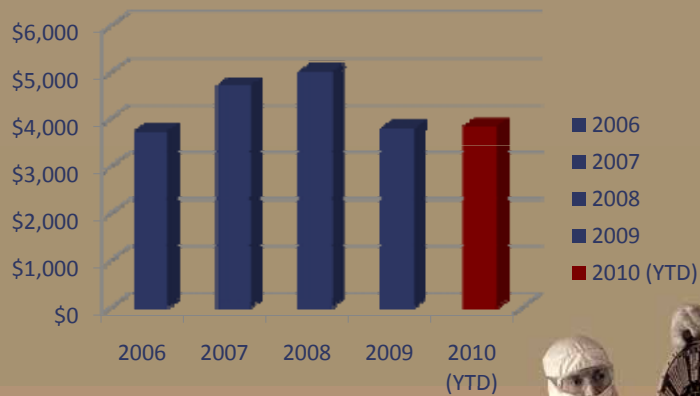
Business	Location	Number of Jobs
C3 Communications	Twin Falls	900
Allstate Insurance	Pocatello/Chubbuck	600
Areva	Idaho Falls	300
Schweitzer Engineering	Lewiston	100
Oregon Potato Company	Burley	50
Valdepena Wood Products	Nampa	10
Next Generation Arms	Hayden	5
TOTAL JOBS		1,965



Investments for a healthy bottom line

STATE OF
IDAHO
U.S.A.

Exports (\$millions)



Investments for a healthy bottom line



Country	Value of Exports
Canada	\$838,200,306
Singapore	\$682,757,861
Taiwan	\$499,607,896
China	\$301,992,791
South Korea	\$197,534,101
Japan	\$151,907,533
Hong Kong	\$123,967,219
Mexico	\$123,525,727
Malaysia	\$107,294,946
France	\$67,686,721

Top Export Markets-2010 YTD



Investments for a healthy bottom line



Top Export Commodities-2010 YTD

Commodity	Value of Exports
Electrical Machinery	\$1,769,101,214
Aircraft	\$297,390,134
Machinery	\$305,441,547
Precious Stones, Metals	\$143,588,325
Dairy, Eggs, Honey, Etc.	\$114,128,213
Ores, Slag, Ash	\$110,684,398
Optical & Medical Instruments	\$101,688,865
Paper, Paperboard	\$98,569,922
Railway & Traffic Equipment	\$94,497,982
Milling, Malt, Starch	\$59,141,995



Investments for a healthy bottom line



Foreign Direct Investment

- 13,700 jobs are in place in Idaho as a result of investment from International firms
- Recent Win: \$50 million expansion of Nunhems facility in Parma
- Idaho's International offices have helped attract more than \$30 million in international capital for Idaho companies



STATE OF
IDAHO
U.S.A.

Department of Commerce

700 W. State St.
P.O. Box 83720
Boise, Idaho
83720-0093

P: (800) 842-5858
F: (208) 334-2631

www.commerce.idaho.gov



Investments for a healthy bottom line

