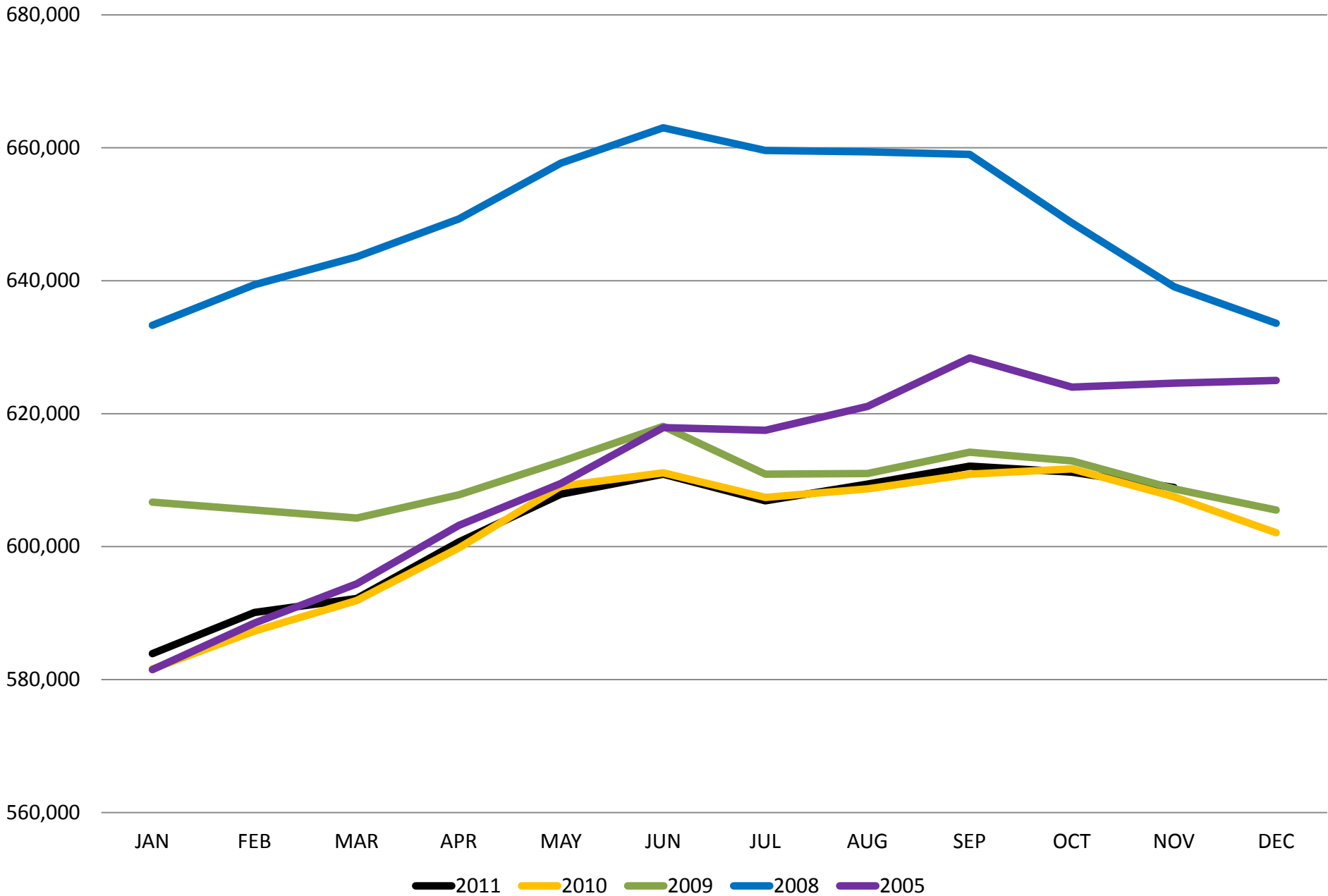




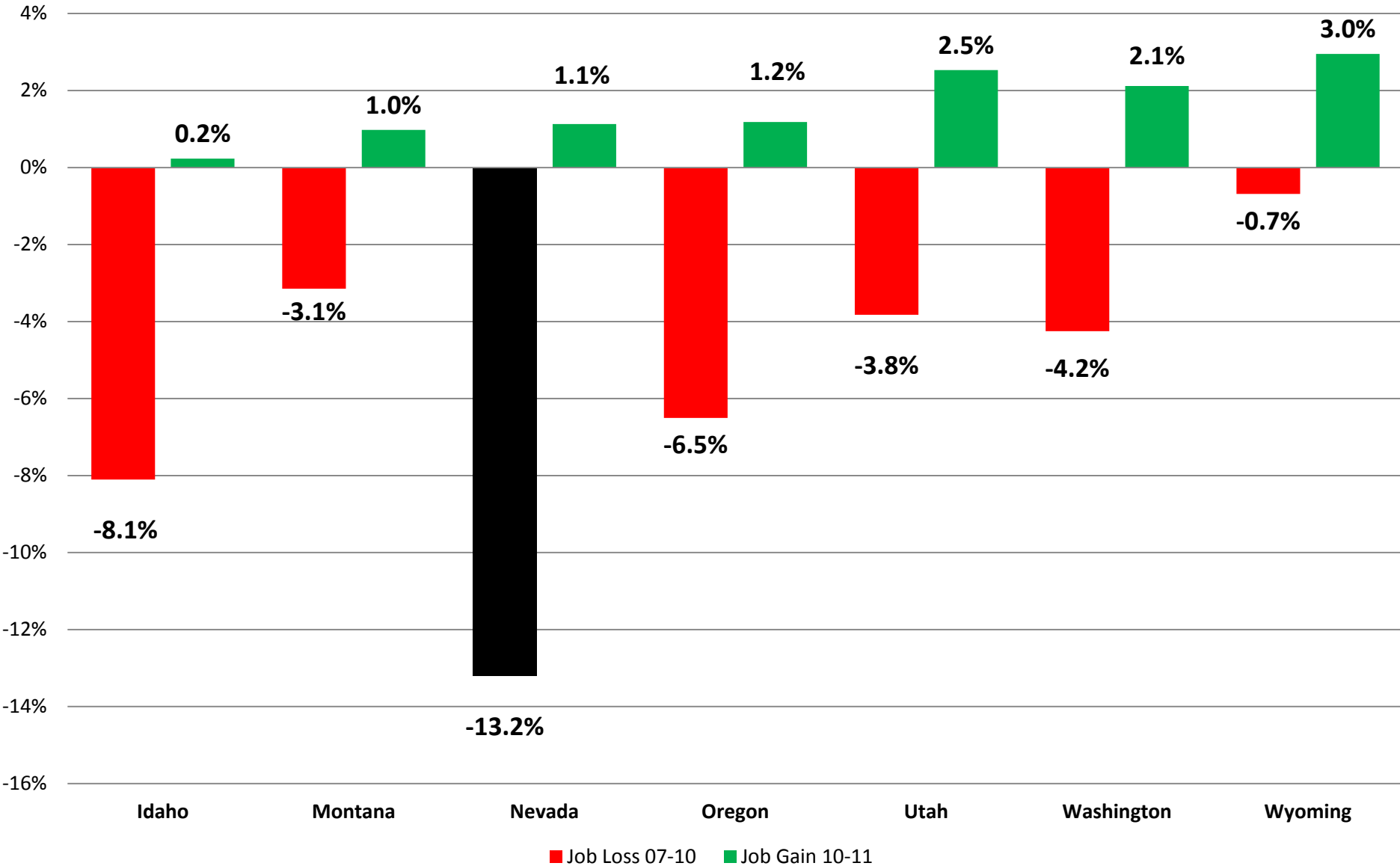
Economic Outlook and Revenue Assessment Committee

Idaho Department of Labor
Communications and Research
Jan. 5, 2012

Idaho Nonfarm Jobs

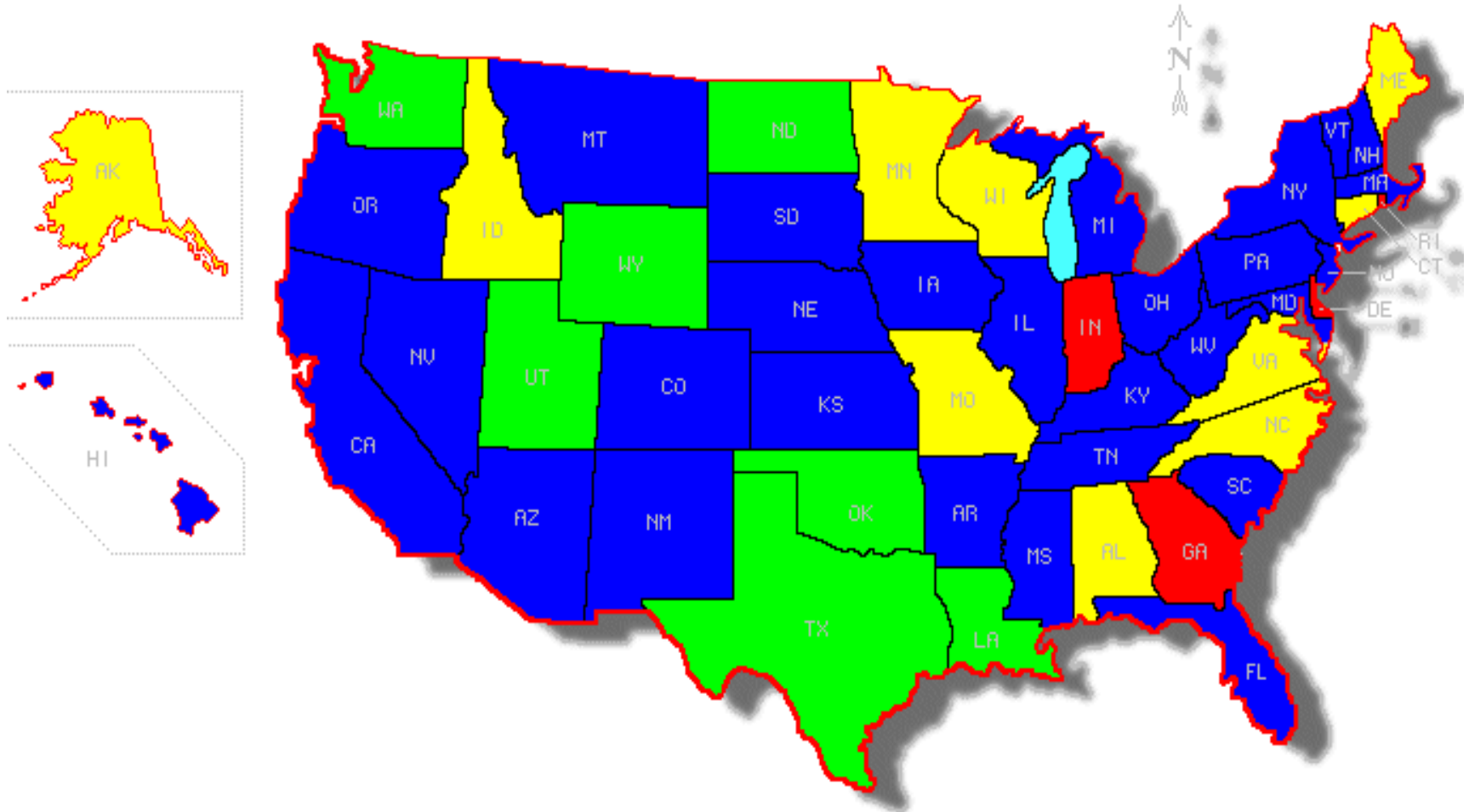


Percentage Change in Jobs During and After the Recession (November 07-10 and November 10-11)



Percentage Change in Jobs by State

November 2010-November 2011



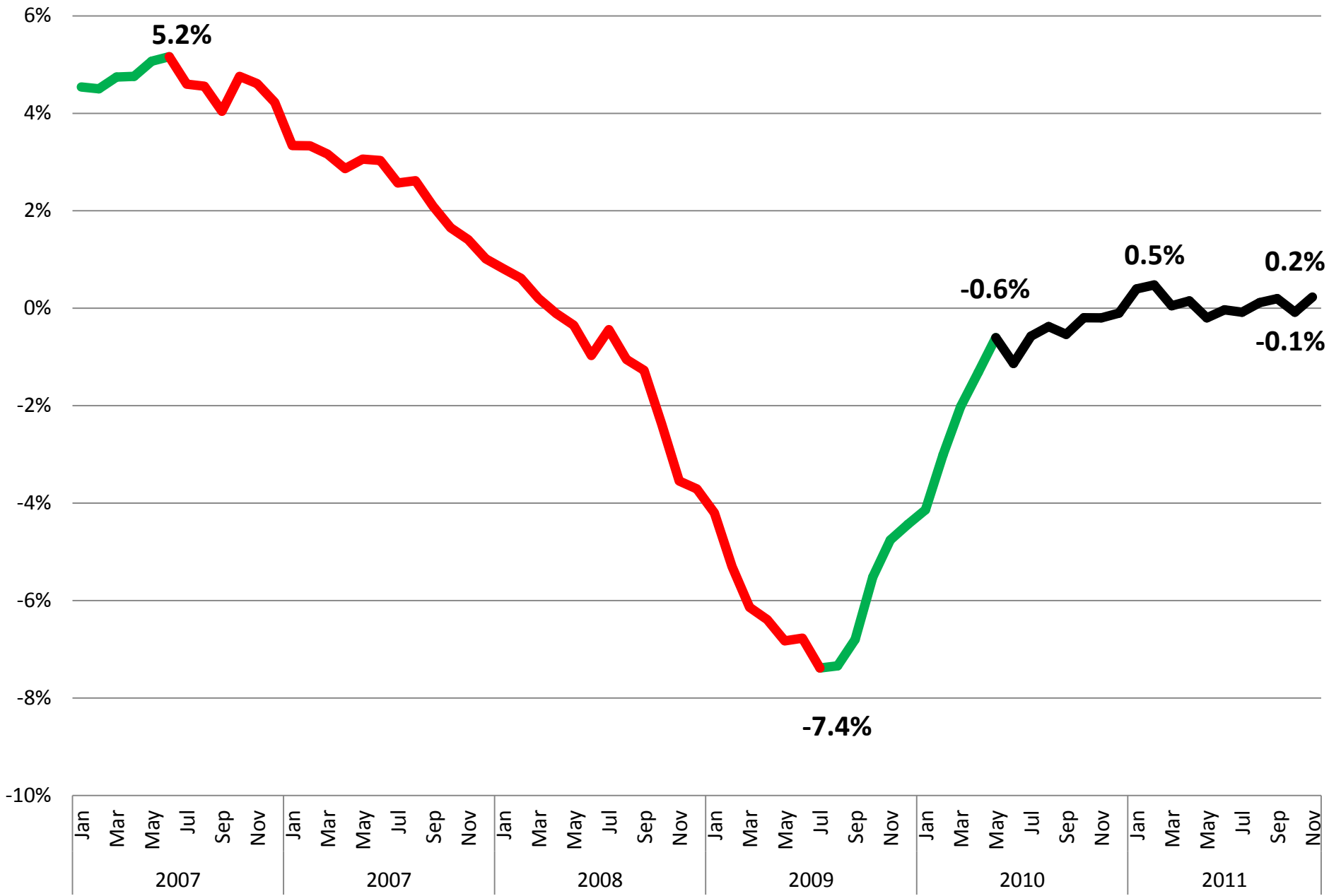
Increase Over 2%

Increase 0.6 to 2%

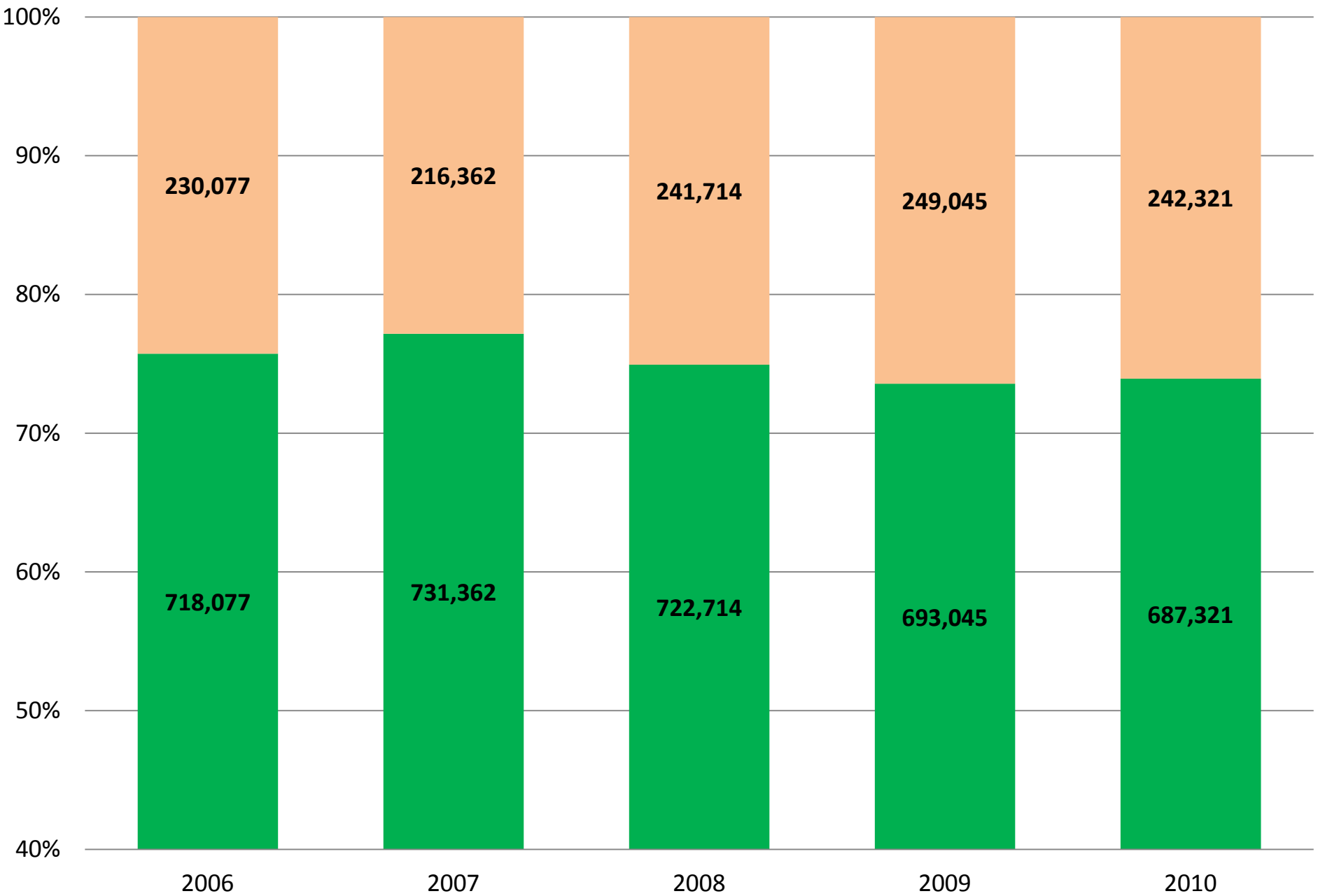
Increase 0 to 0.5% - Idaho 0.2%

Decrease

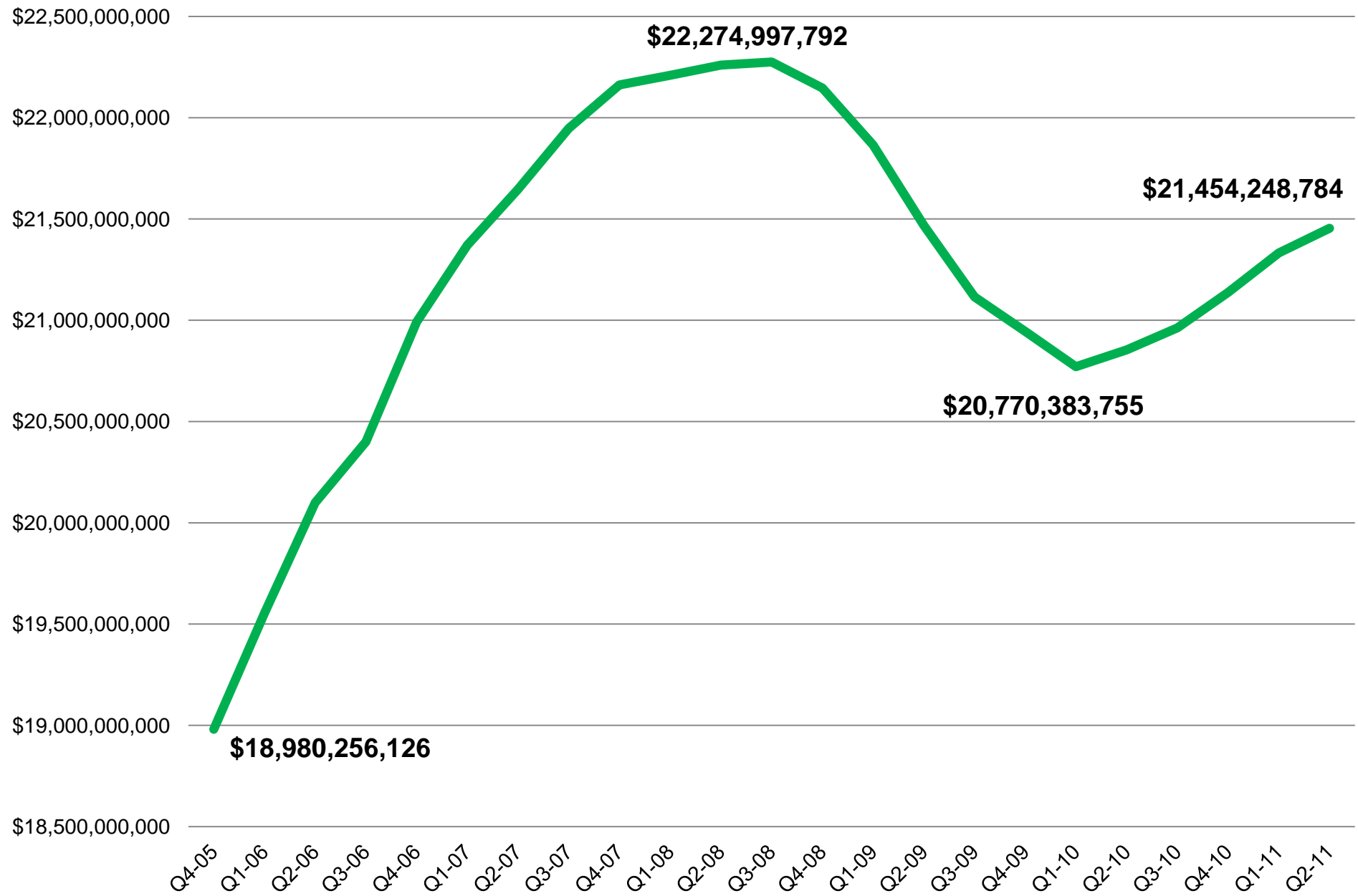
Year-Over-Year Percentage Change in Jobs



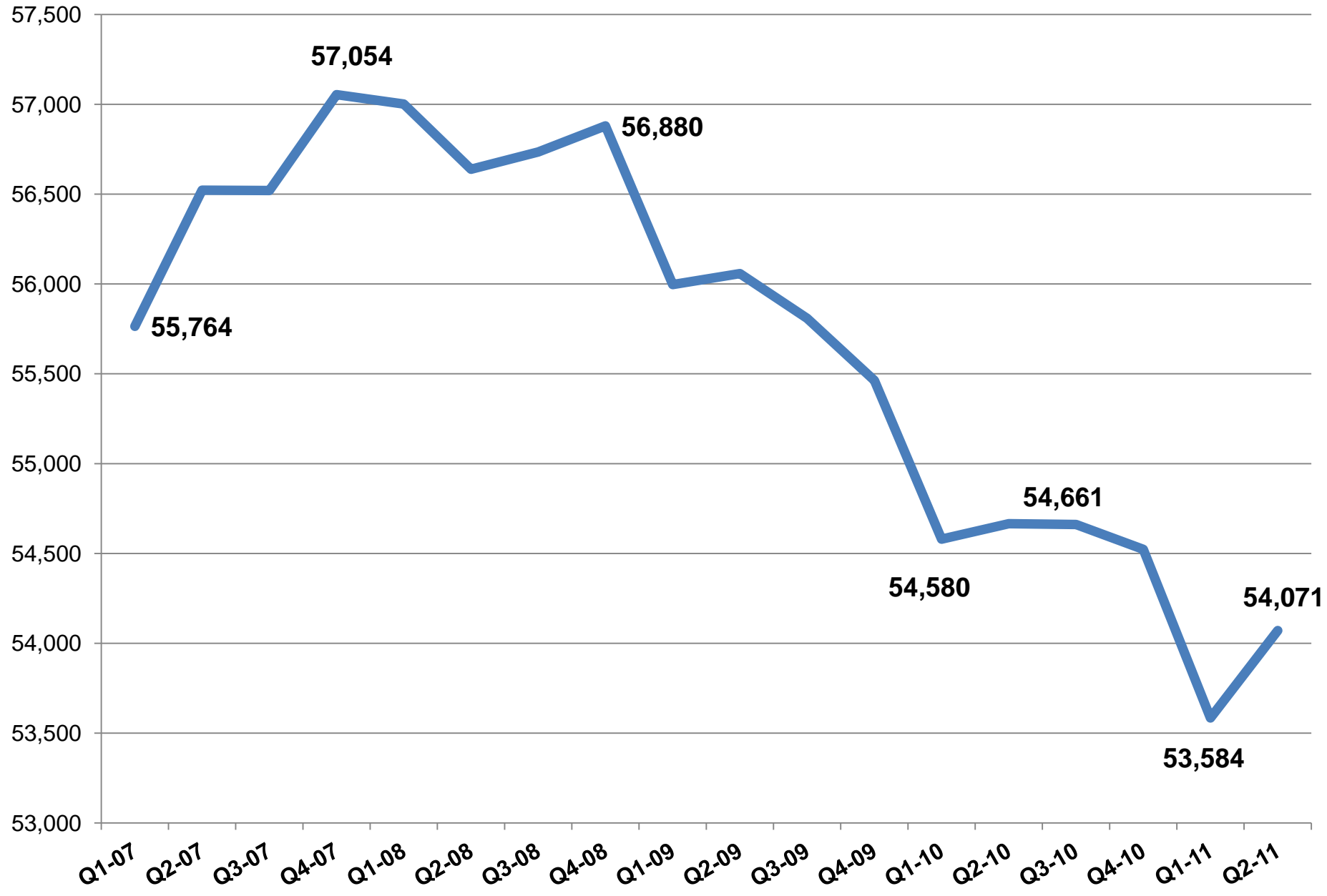
Part-Time Jobs In the Idaho Economy



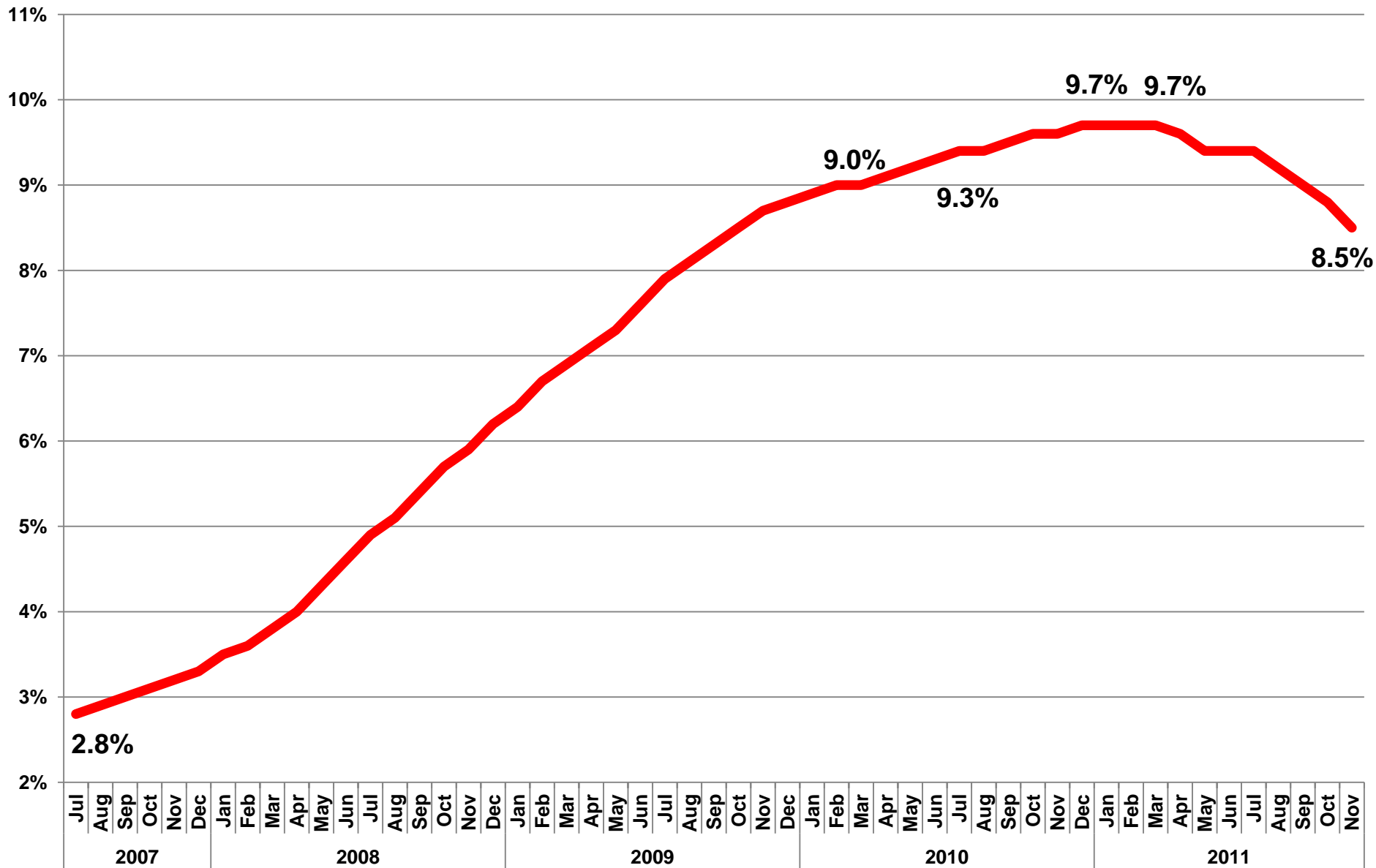
Total Wages by Quarter, Annualized



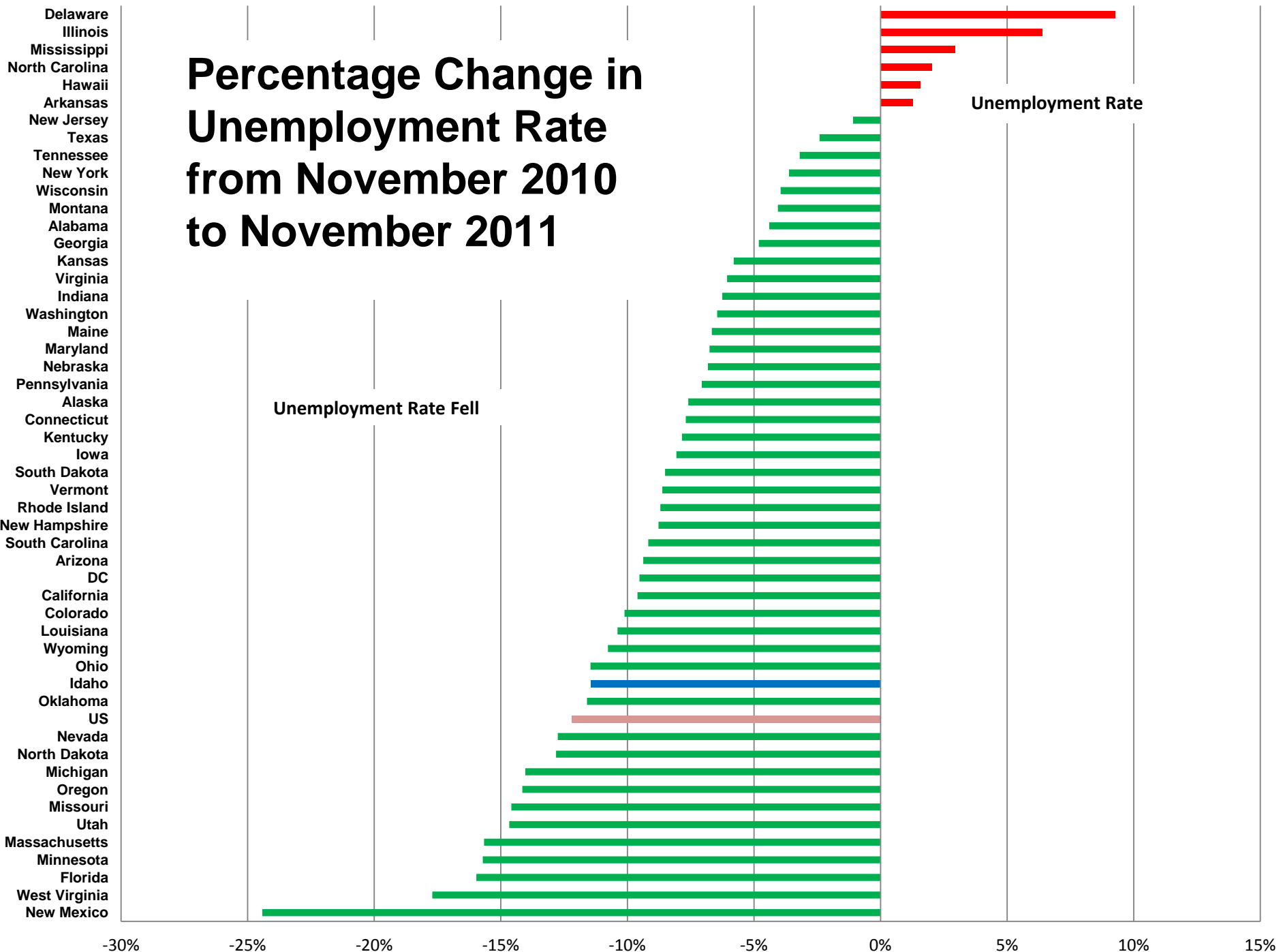
Idaho Employers by Quarter, 2007-Q2 2011



Monthly Unemployment Rate



Percentage Change in Unemployment Rate from November 2010 to November 2011



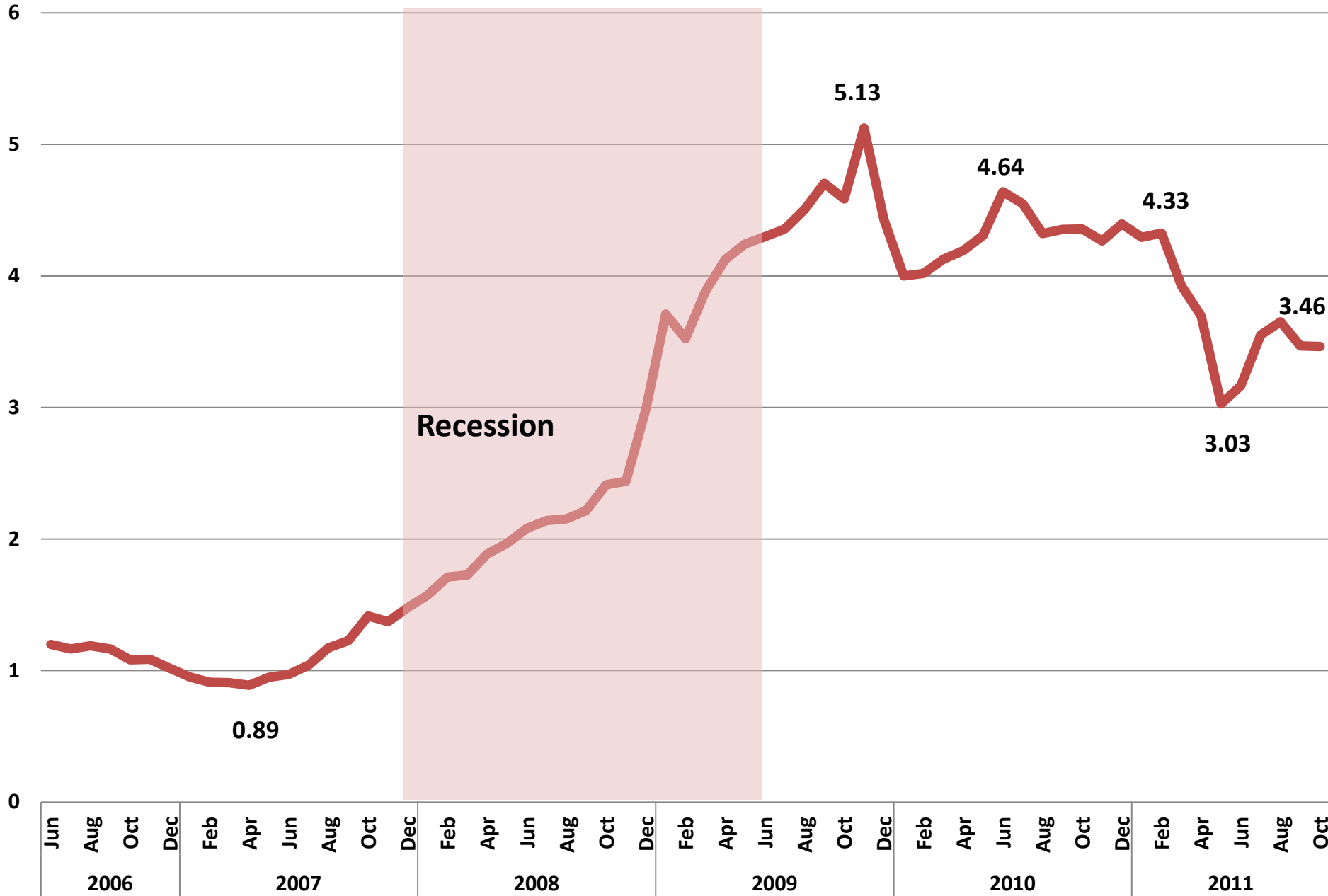
Unemployment Rate Fell

Unemployment Rate

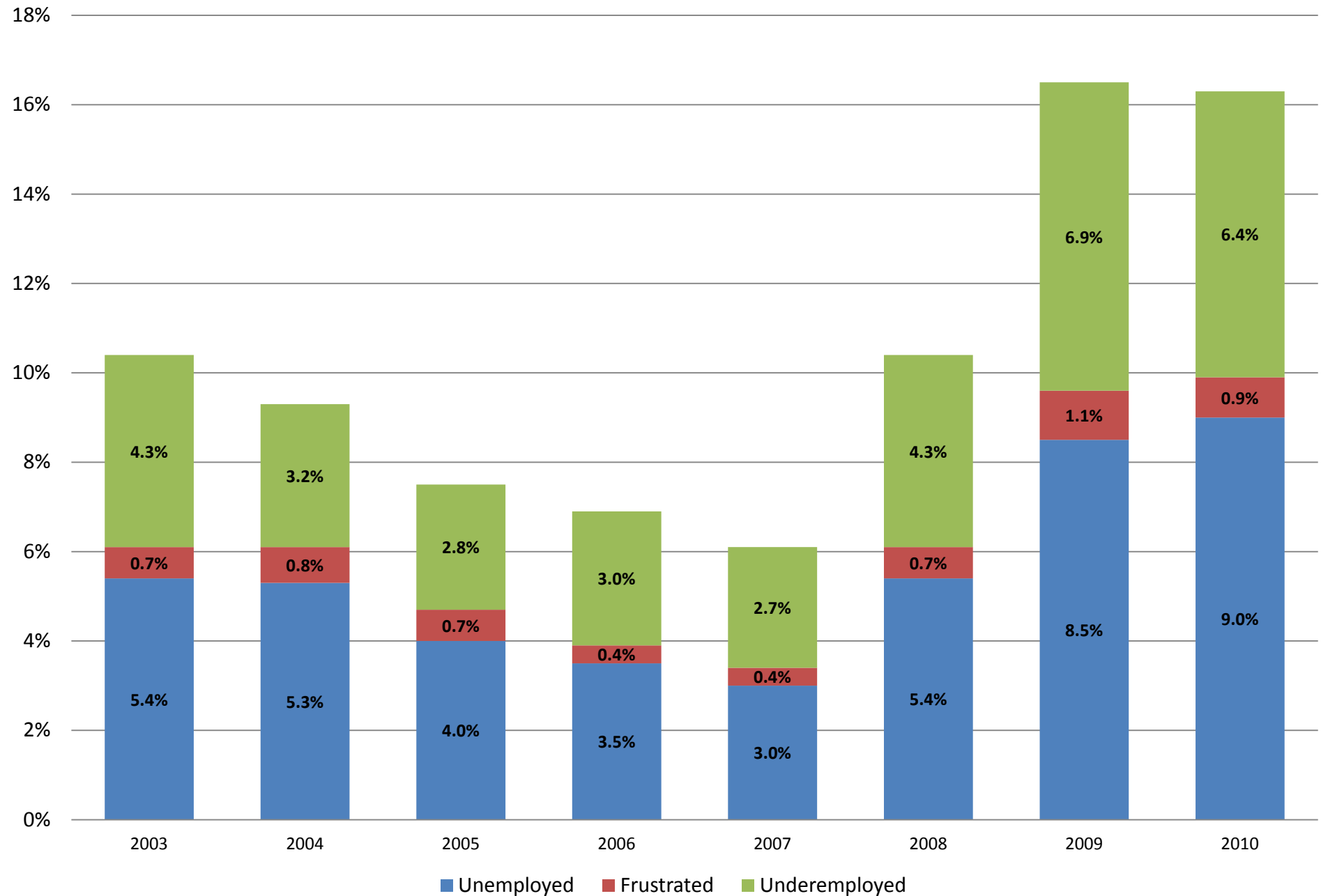
Monthly Exhaustion Rate, 1972-2011



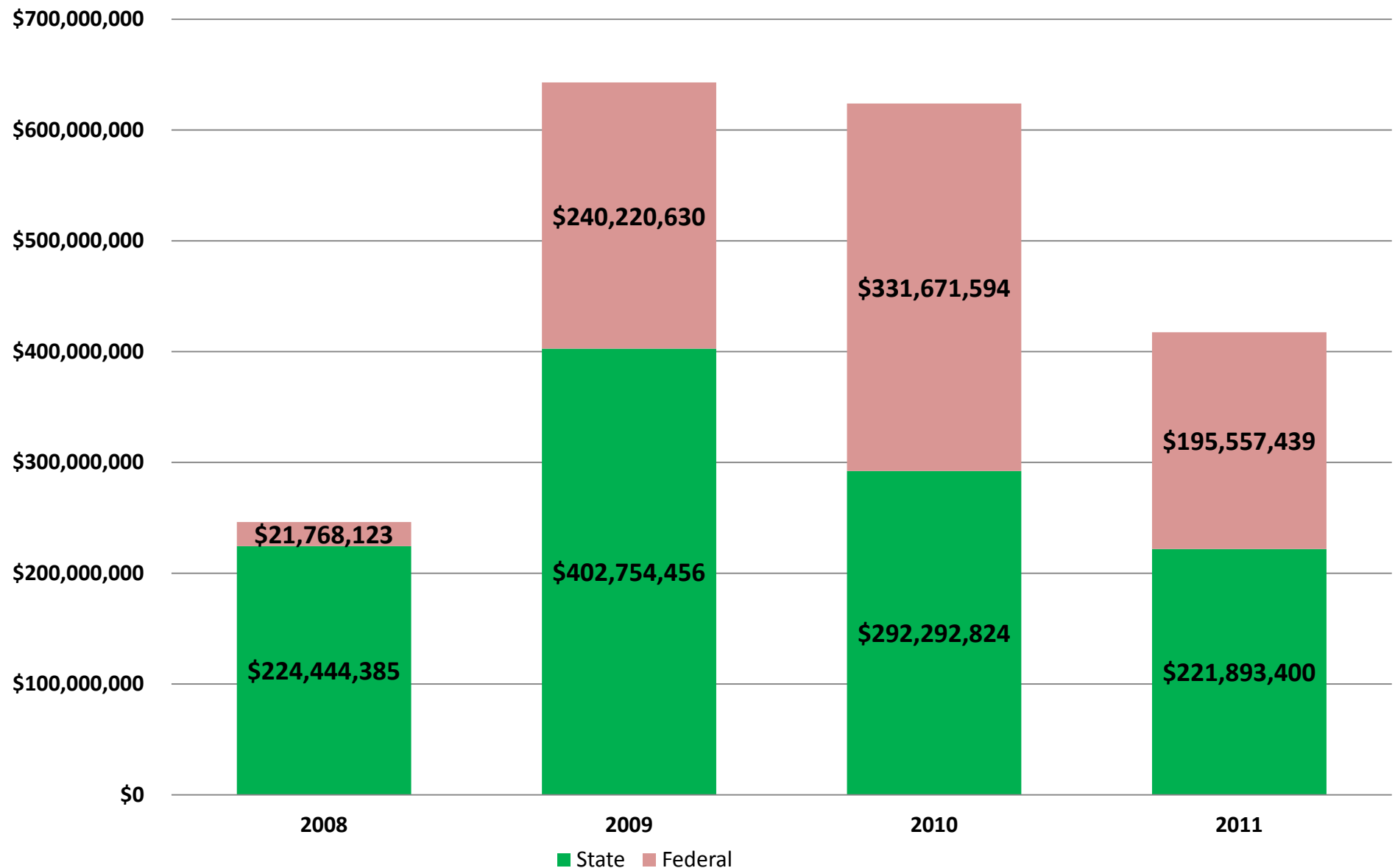
Number of Unemployed Idahoans Per Job Opening



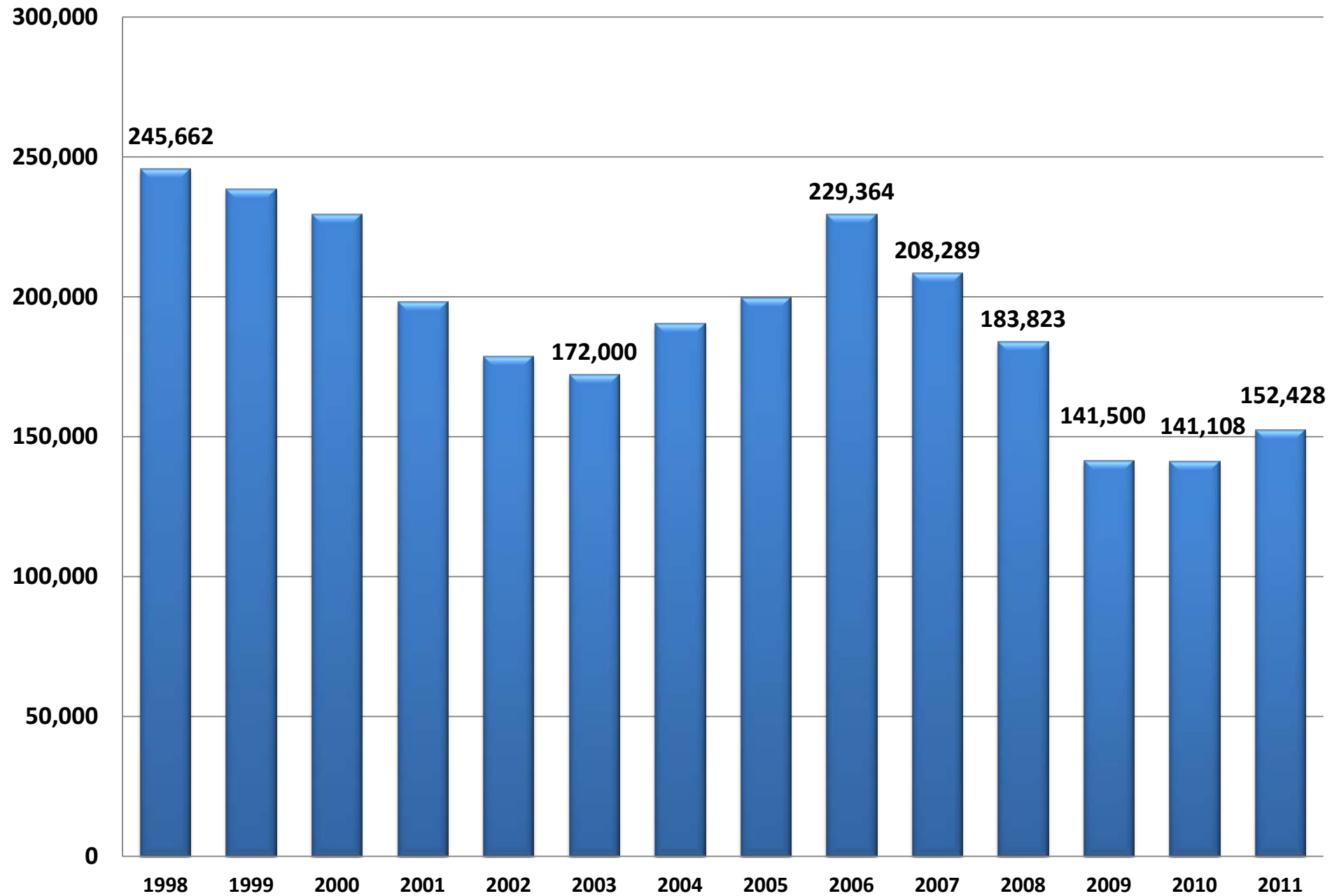
Total Unemployment and Underemployment



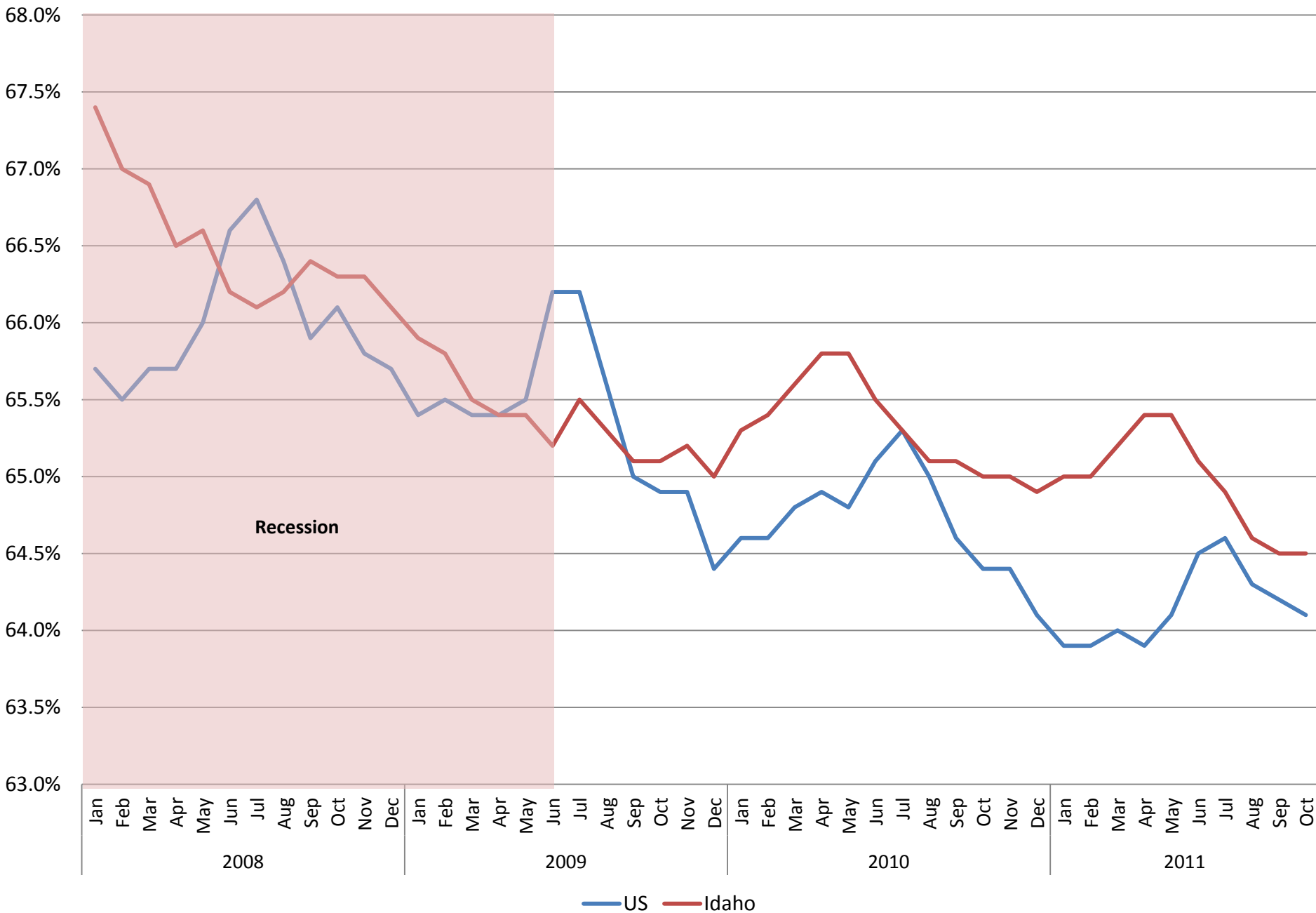
Annual Unemployment Insurance Benefit Payments



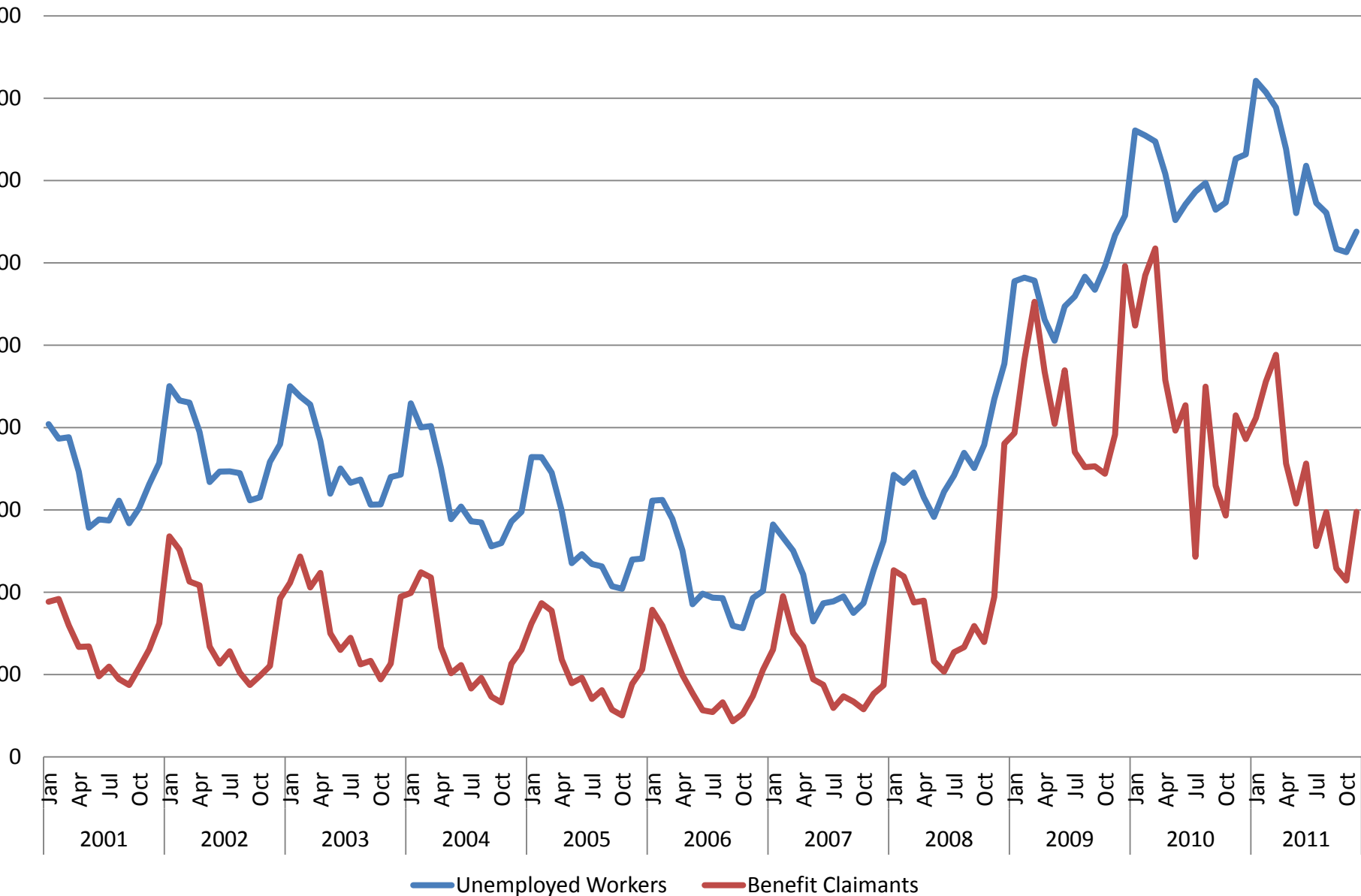
New Hires



Monthly Labor Participation Rate



Number of Unemployed Workers and Workers Getting Benefits



Change in Median Household Income, 2009-2010

-5% to -14.3%

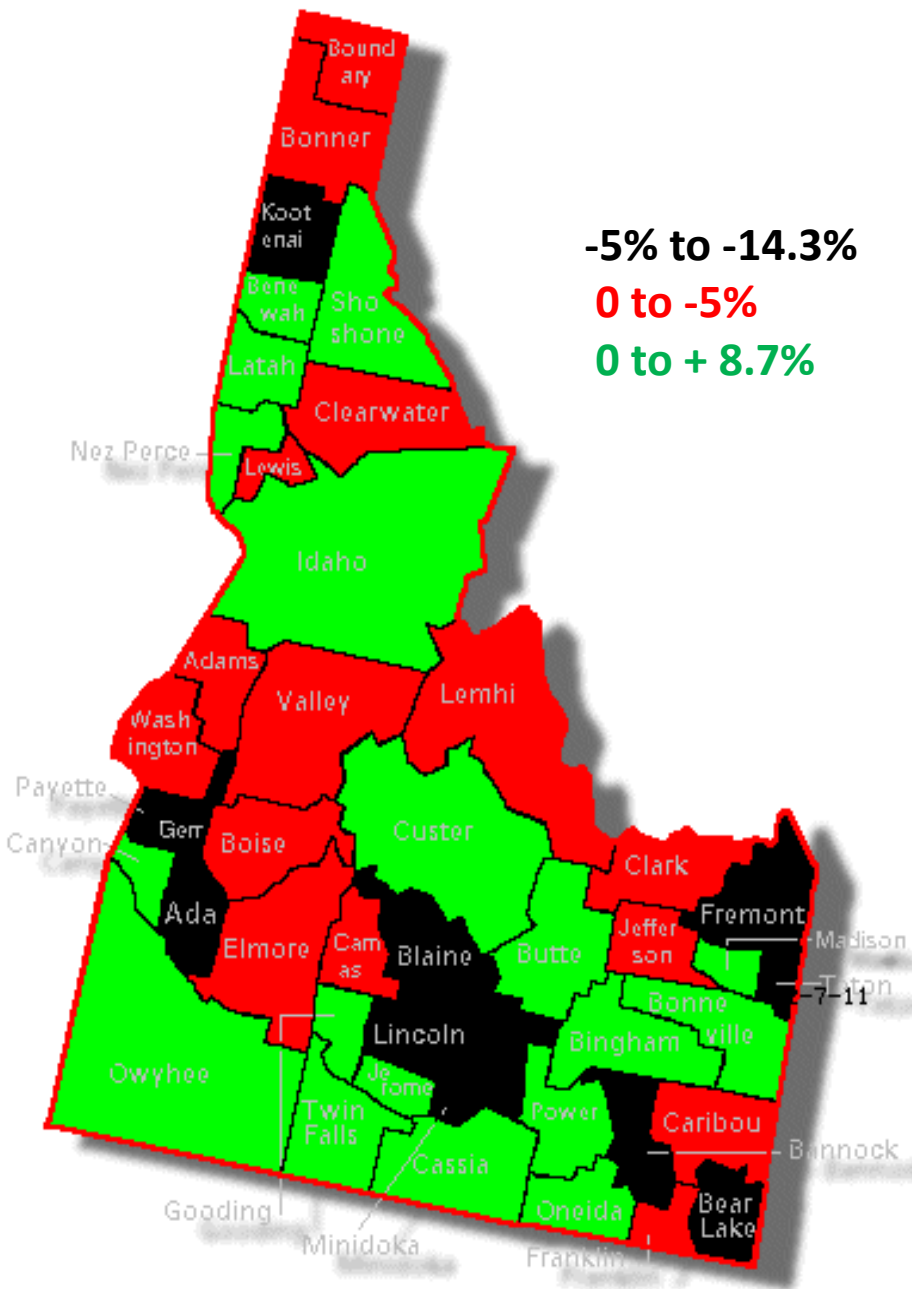
0 to -5%

0 to + 8.7%

-5% to -14.3% – Lincoln, Payette, Teton, Bannock, Kootenai, Fremont, Bear Lake, Blaine, Ada, Gem and Minidoka

0 to -5% – Valley, Boise, Clearwater, Boundary, Caribou, Elmore, Adams, Franklin, Bonner, Camas, Lewis, Washington, Jefferson, Clark and Lemhi

0 to +8.7% – Bingham, Benewah, Cassia, Bonneville, Nez Perce, Jerome, Butte, Custer, Twin Falls, Madison, Idaho, Power, Shoshone, Oneida, Gooding, Latah, Canyon and Owyhee

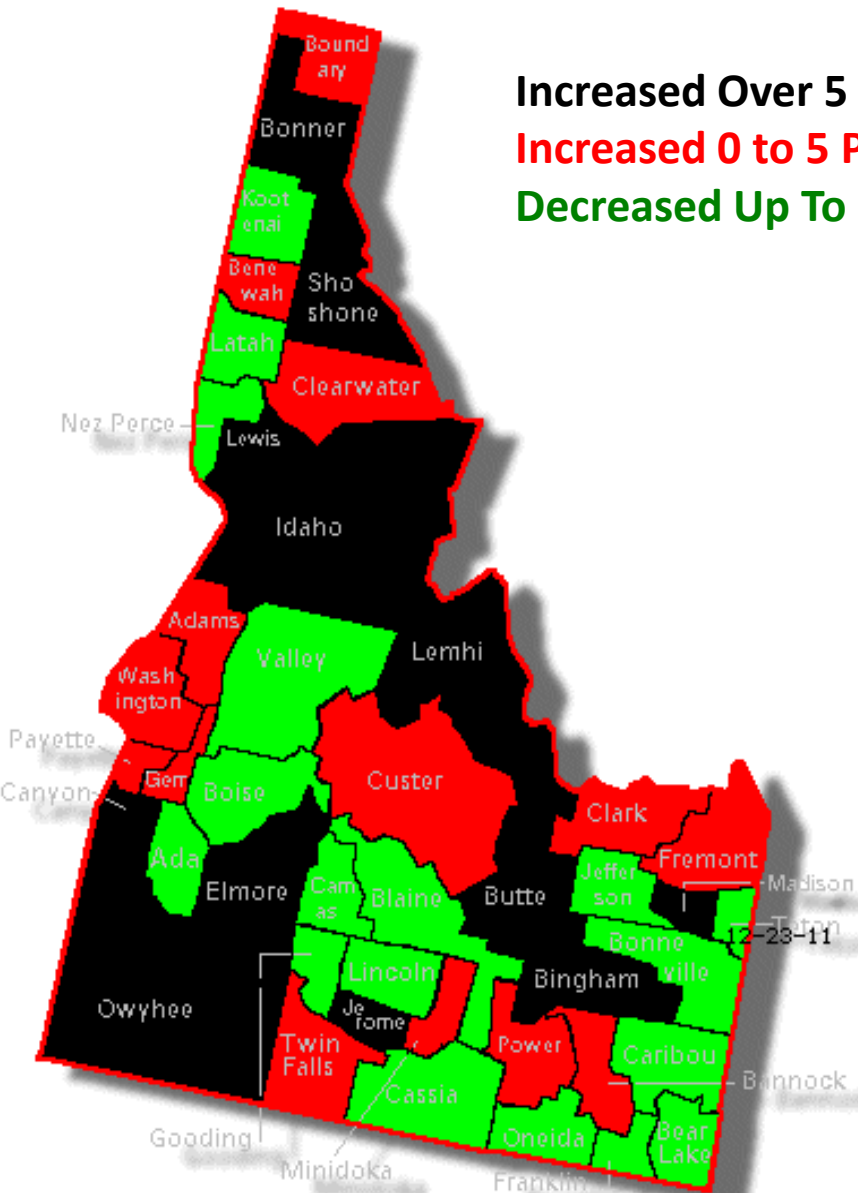


Change in Poverty Rate, 2009-2010

Increased Over 5 Points

Increased 0 to 5 Points

Decreased Up To 15 Points



Increased Over 5 Percentage Points – Butte, Elmore, Jerome, Bonner, Lewis, Lemhi, Owyhee, Idaho, Bingham, Canyon, Shoshone and Madison

Increased 0 to 5 Percentage Points – Gem, Payette, Benewah, Custer, Adams, Clark, Fremont, Power, Clearwater, Minidoka, Boundary, Bannock, Washington and Twin Falls

Decreased Up To 15 Percentage Points – Lincoln, Camas, Oneida, Gooding, Franklin, Caribou, Valley, Kootenai, Jefferson, Blaine, Bonneville, Boise, Teton, Ada, Latah, Bear Lake, Cassia and Nez Perce

Annualized Projected Percentage Job Growth By Sector

Two-Year
Growth

