

# General Fund Revenue Forecasts for FY2012 through FY2014

Scott Benson, Idaho State University

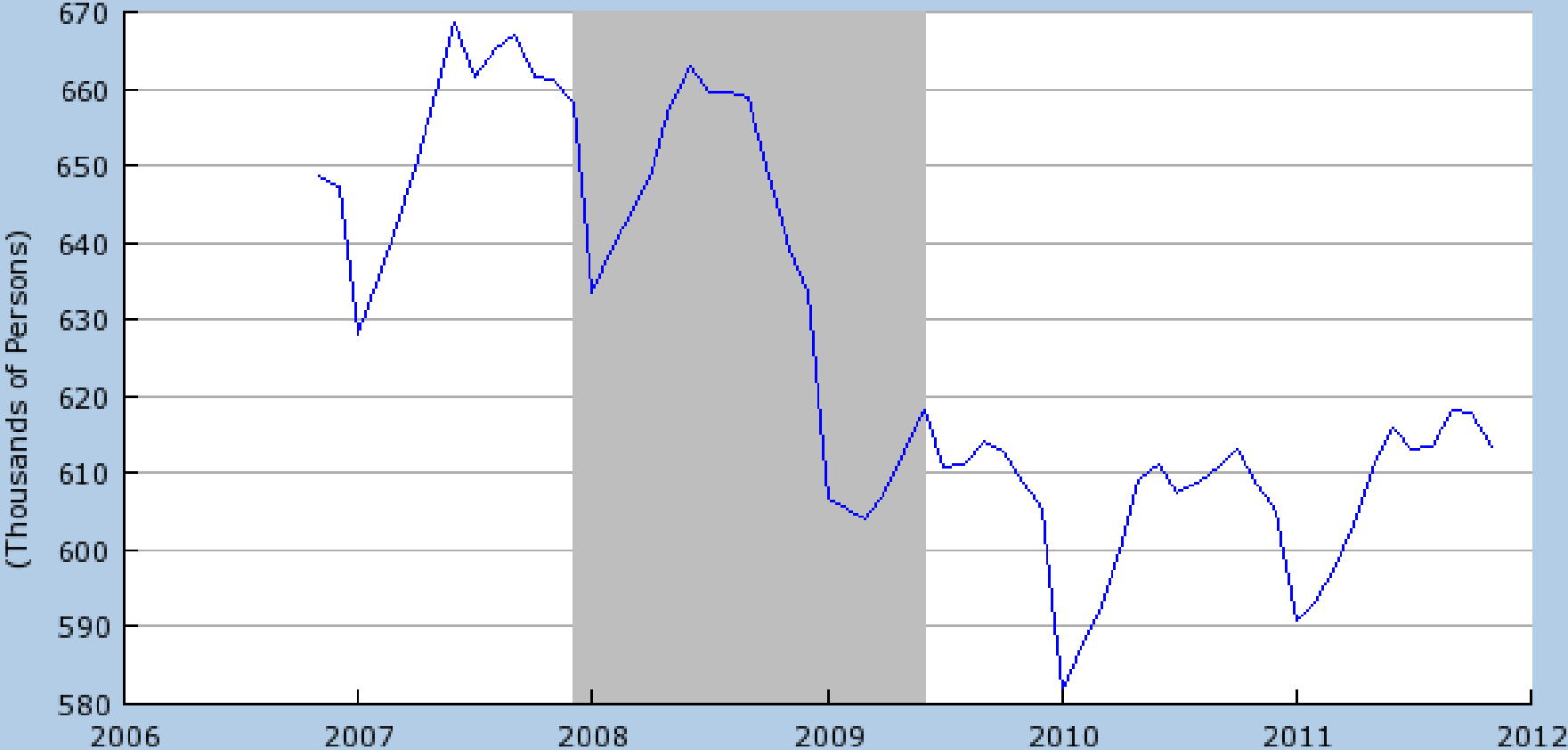
Don Holley, Boise State University

Eric Stuen, University of Idaho

January 6, 2012

# THERE HAS BEEN MODEST EMPLOYMENT GROWTH OVER THE PAST TWO YEARS

Employees on Nonfarm Payrolls in Idaho (IDNAN)  
Source: U.S. Department of Labor: Bureau of Labor Statistics

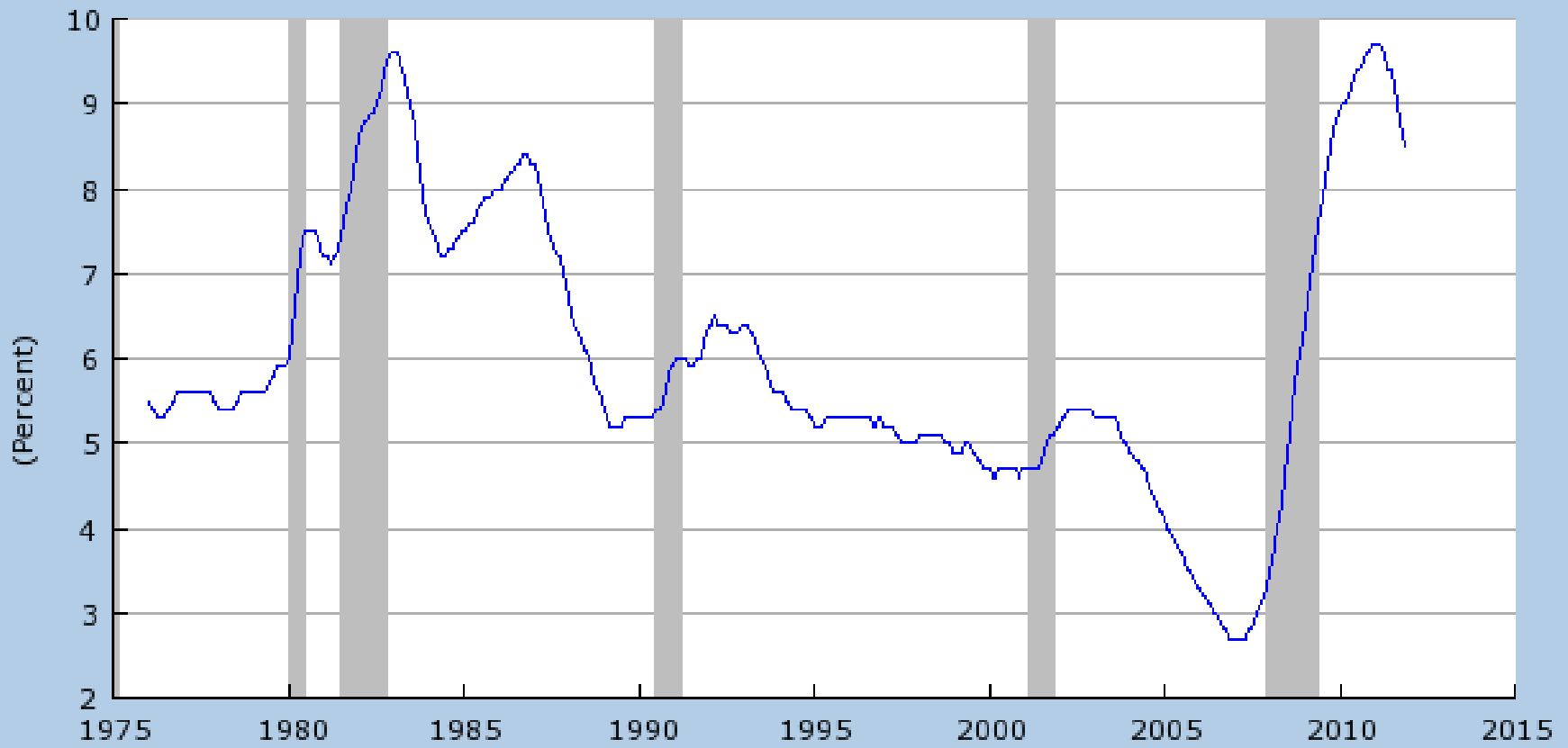


Shaded areas indicate US recessions.  
2012 research.stlouisfed.org



# THE IDAHO UNEMPLOYMENT RATE IS DECLINING

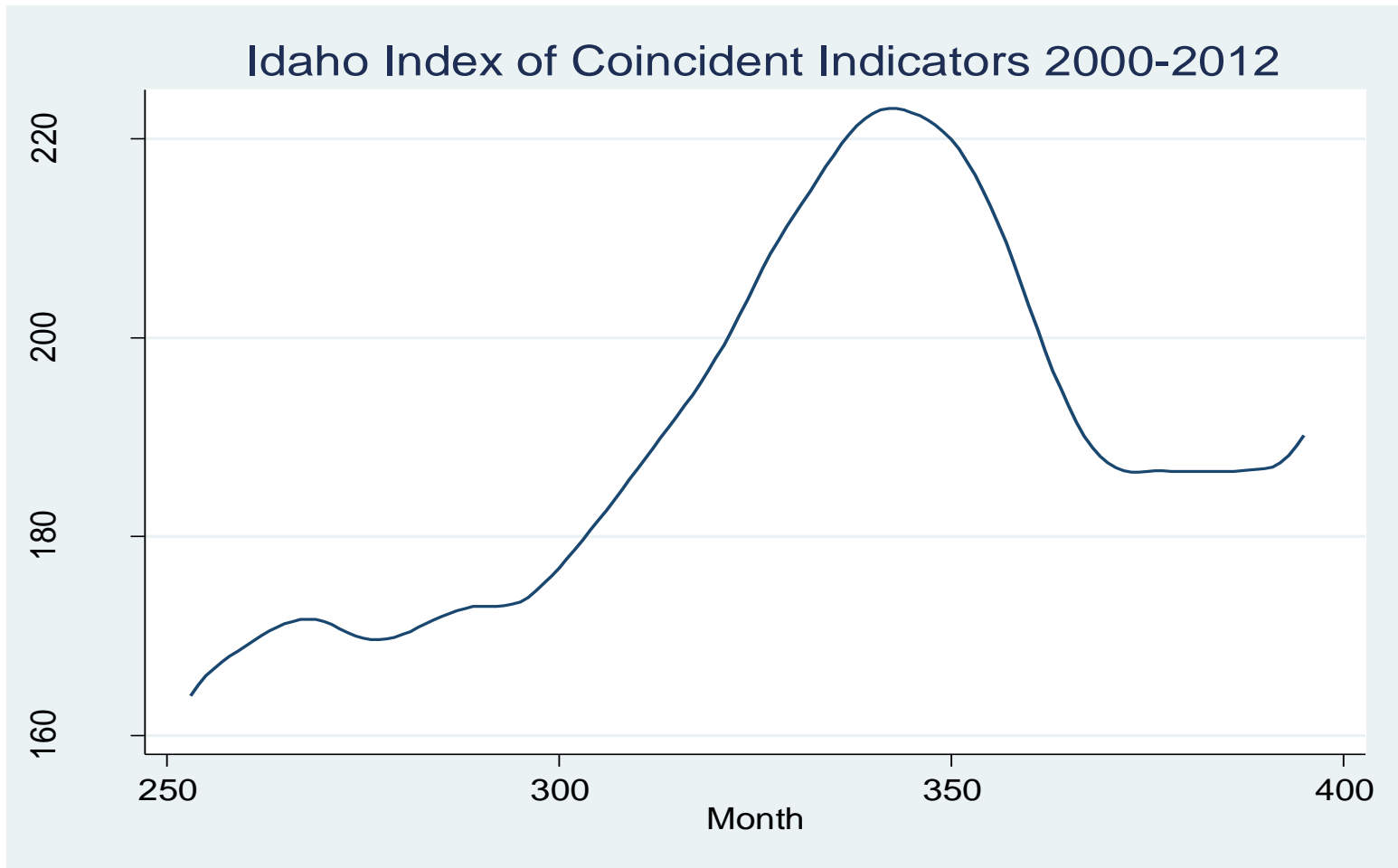
Unemployment Rate in Idaho (IDUR)  
Source: U.S. Department of Labor: Bureau of Labor Statistics



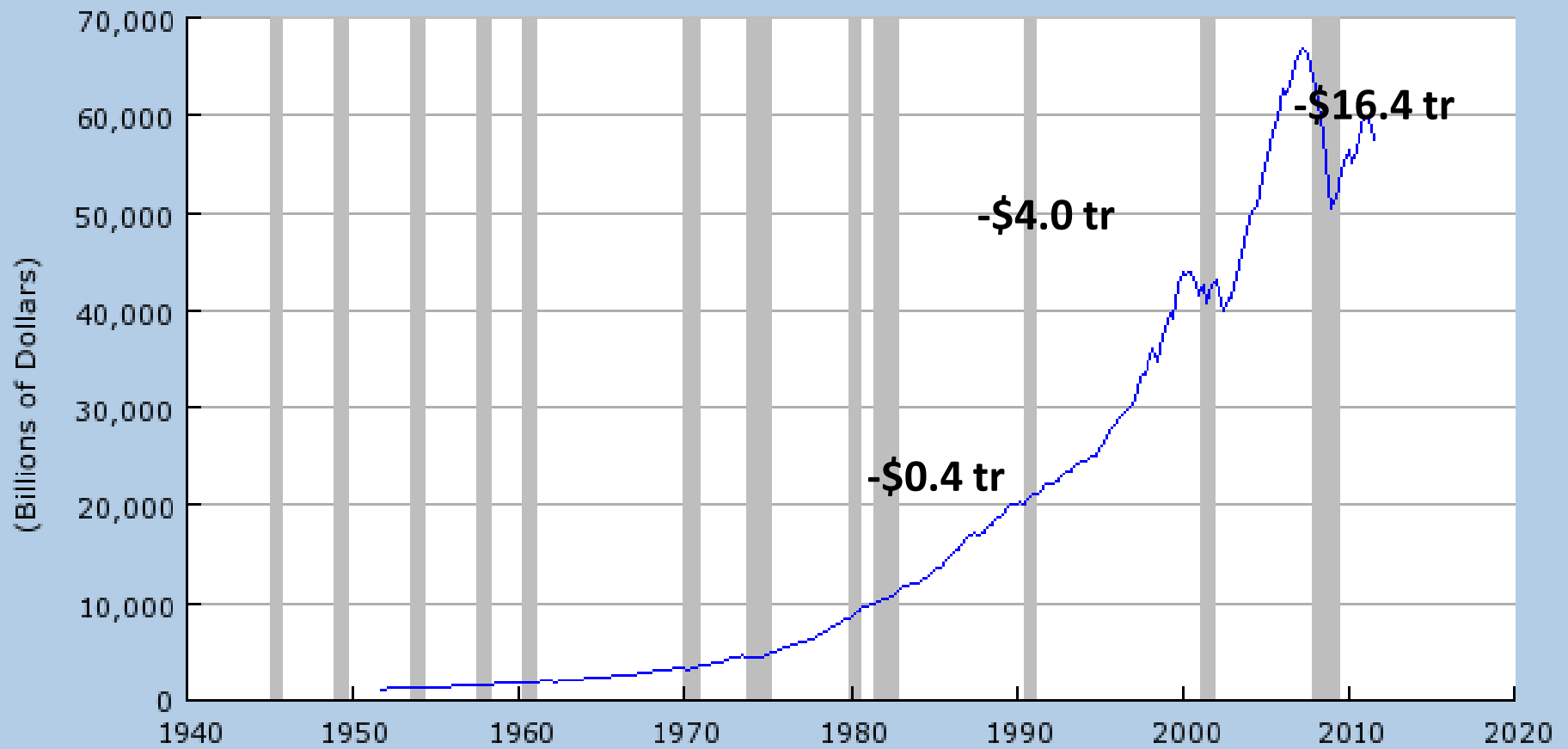
Shaded areas indicate US recessions.  
2012 research.stlouisfed.org

# Manufacturing and Employment Index: Idaho

Source: Federal Reserve Bank of Philadelphia

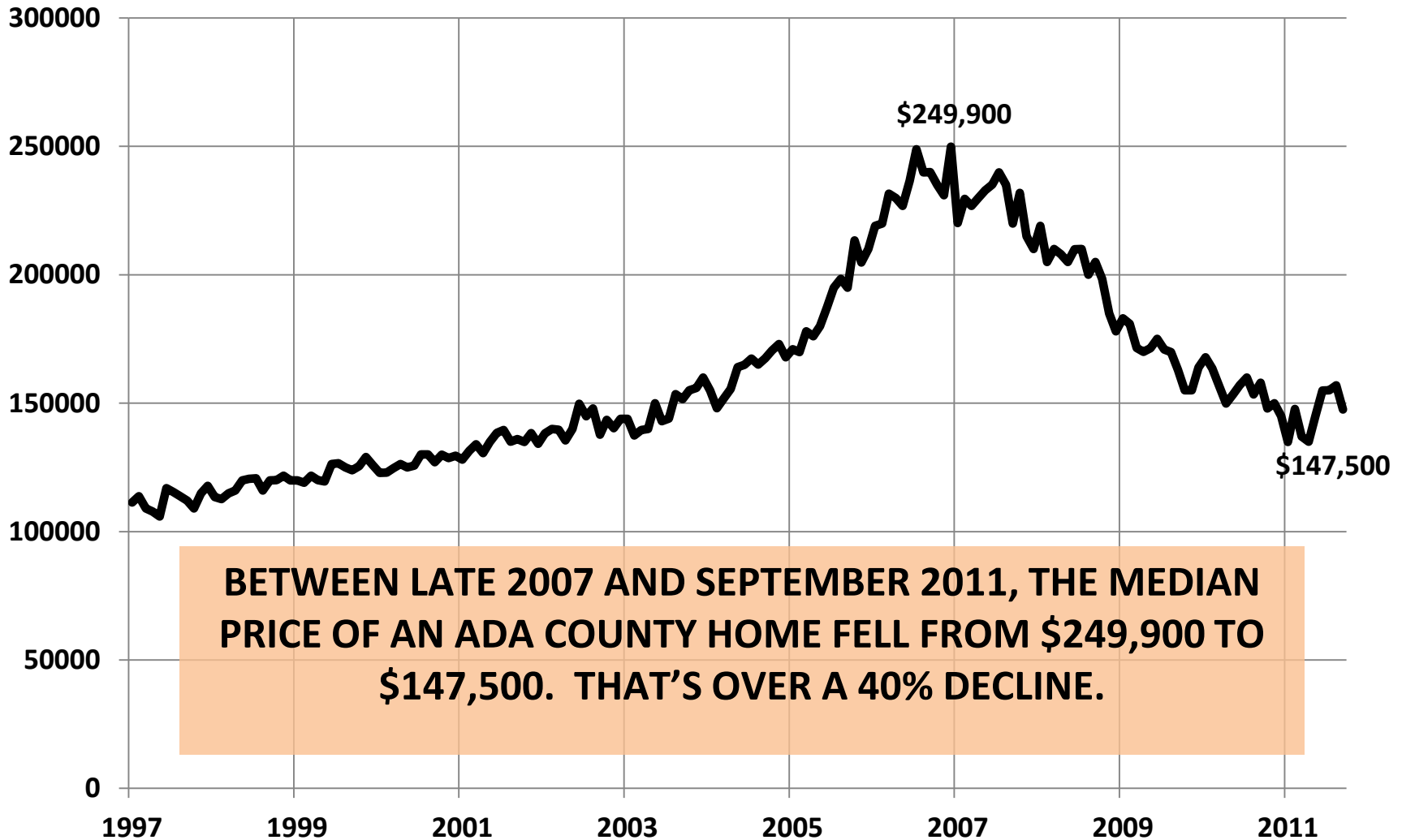


Total Net Worth - Balance Sheet of Households and Nonprofit Organizations (TNWBSHNO)  
Source: Board of Governors of the Federal Reserve System



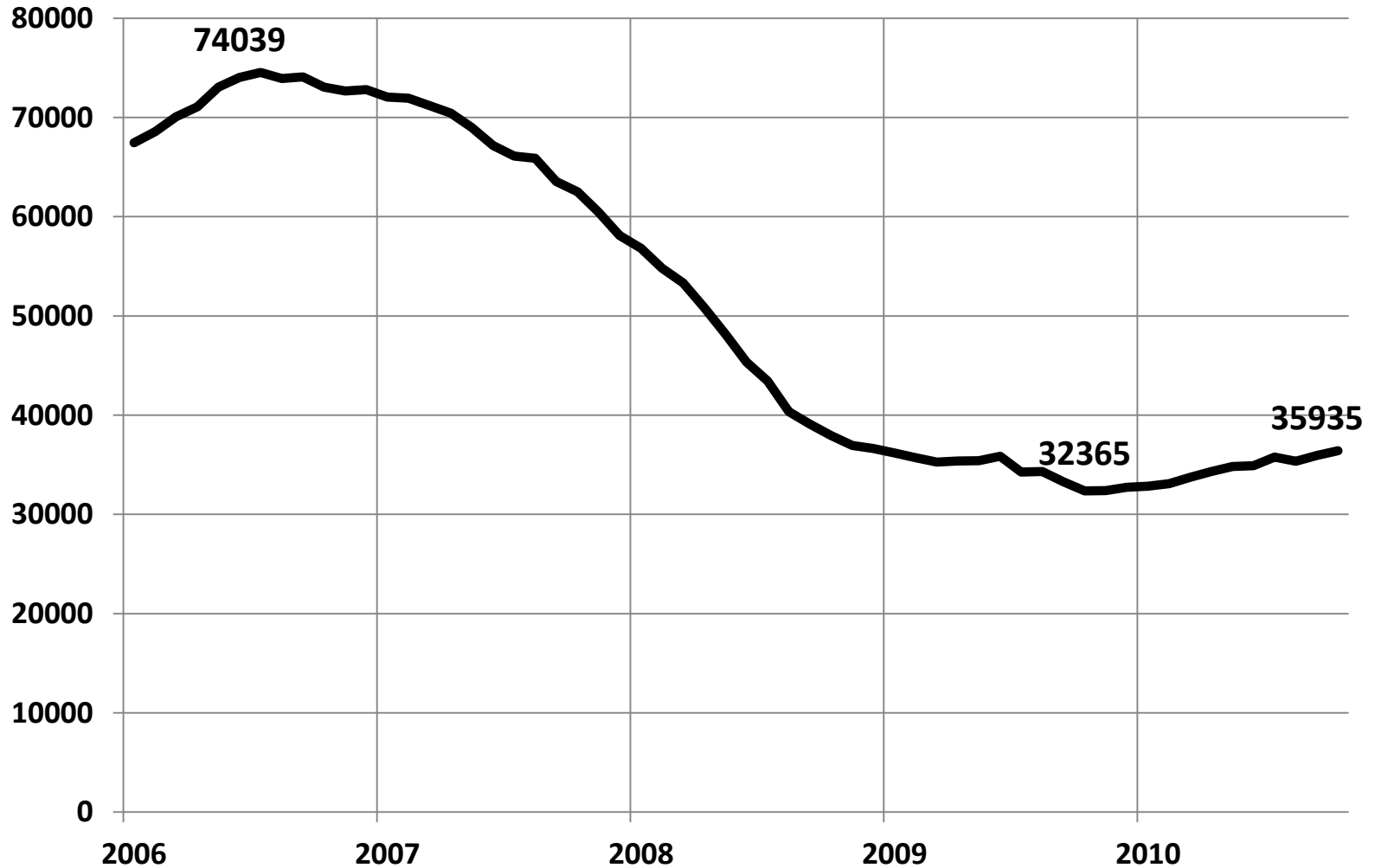
Shaded areas indicate US recessions.  
2011 research.stlouisfed.org

# MEDIAN PRICE OF ALL HOMES SOLD IN ADA COUNTY: 1997 THROUGH SEPTEMBER 2011



SOURCE: Intermountain Multiple Listing Service

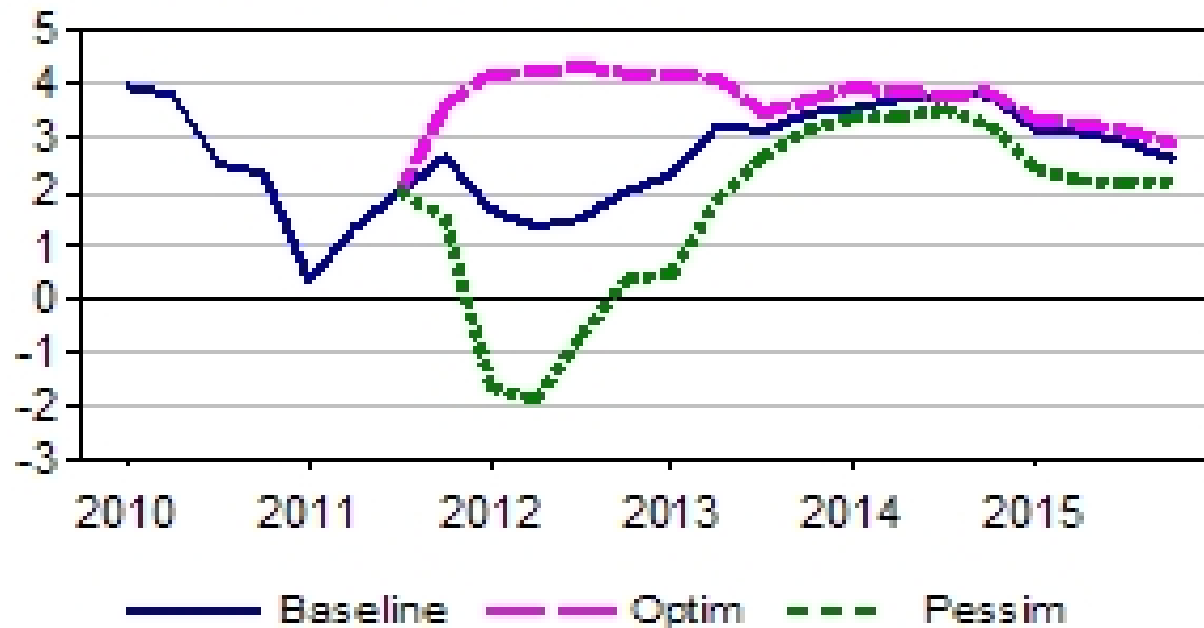
# 12 MONTH MOVING TOTAL OF IDAHO NEW CAR SALES



# National forecast – 1.5% to 2.3% for 2012

## Real GDP

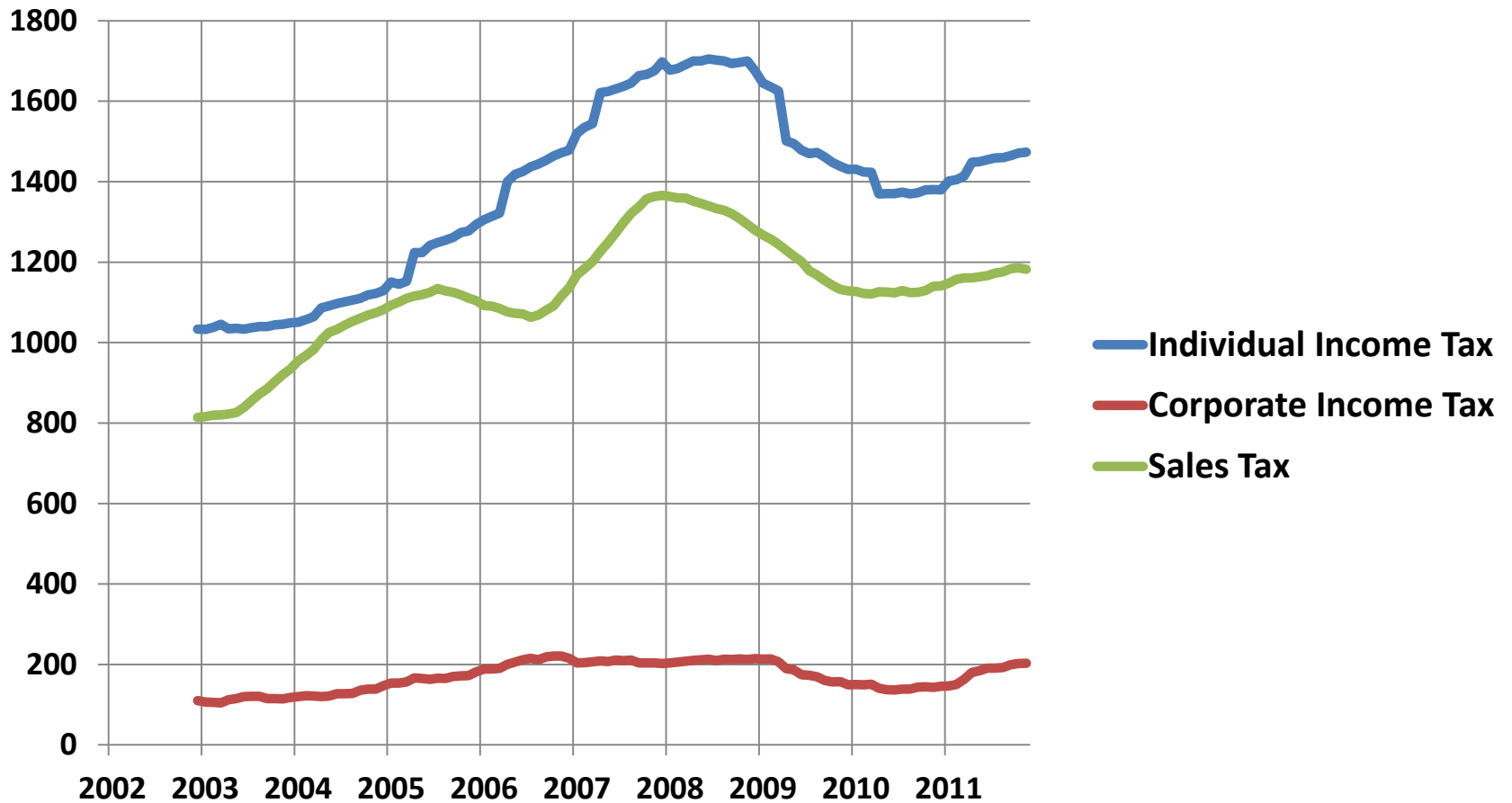
(Percent change, annual rate)



Source: IHS Global Insights, January 2012



# 12 MONTH MOVING TOTALS OF IDAHO'S INDIVIDUAL INCOME TAX SALES TAX CORPORATE INCOME TAX



# Other Factors Holding Back Recovery

- Potential changes to Federal regulatory / tax structure in 2012 contributing to investment uncertainty
- Possibility of defaults by European nations and disruptions to finance

# GENERAL FUND FORECAST: FY2012 THROUGH FY2014

	<u>2010</u>	<u>2011</u>	<u>2012</u>	<u>2013</u>	<u>2014</u>
Individual Income Tax	\$ 1,061.88	\$ 1,152.65	\$ 1,205.00	\$ 1,260.00	
		8.5%	4.5%	4.6%	
Corporate Income Tax	\$ 97.02	\$ 168.95	\$ 170.00	\$ 175.00	
		74.1%	0.6%	2.9%	
Sales Tax	\$ 955.91	\$ 972.38	\$ 1,002.52	\$ 1,044.00	
		1.7%	3.1%	4.1%	
Product Taxes Subtotal	\$ 41.18	\$ 42.82	\$ 45.55	\$ 48.24	
		4.0%	6.4%	5.9%	
Miscellaneous Revenue Subtotal	\$ 108.48	\$ 107.67	\$ 112.54	\$ 118.18	
		-0.7%	4.5%	5.0%	
Total General Fund Collections	\$ 2,264.47	\$ 2,444.47	\$ 2,535.61	\$ 2,645.42	\$ 2,804.15
		7.9%	3.7%	4.3%	6.0%

# GENERAL FUND FORECAST FOR FY2012 AND FY2013

	<u>2010</u>	<u>2011</u>	<u>2012</u>	<u>2013</u>
Individual Income Tax	\$ 1,061.88	\$ 1,152.65	\$ 1,205.00	\$ 1,260.00
		8.5%	4.5%	4.6%
Corporate Income Tax	\$ 97.02	\$ 168.95	\$ 170.00	\$ 175.00
		74.1%	0.6%	2.9%
Sales Tax	\$ 955.91	\$ 972.38	\$ 1,002.52	\$ 1,044.00
		1.7%	3.1%	4.1%
Cigarette Tax	\$ 16.90	\$ 14.40	\$ 11.60	\$ 8.10
Tobacco Tax	\$ 7.82	\$ 8.48	\$ 8.87	\$ 9.27
Beer Tax	\$ 2.07	\$ 1.97	\$ 2.00	\$ 2.02
Wine Tax	\$ 3.00	\$ 3.21	\$ 3.33	\$ 3.45
Liquor Distribution	\$ 11.39	\$ 14.76	\$ 16.85	\$ 19.00
Product Taxes Subtotal	\$ 41.18	\$ 42.82	\$ 45.55	\$ 48.24
		4.0%	6.4%	5.9%
Kilowatt Hour Tax	\$ 2.14	\$ 2.43	\$ 2.47	\$ 2.51
Mine License	\$ 1.80	\$ 1.54	\$ 1.60	\$ 1.67
Treasurer	\$ (1.32)	\$ (0.43)	\$ (0.43)	\$ (0.25)
Judicial	\$ 5.38	\$ 5.12	\$ 5.20	\$ 5.28
Insurance Premium Tax	\$ 53.63	\$ 54.12	\$ 54.98	\$ 55.87
State Police	\$ 1.47	\$ 1.52	\$ 1.59	\$ 1.64
Secretary of State	\$ 2.42	\$ 2.41	\$ 2.51	\$ 2.62
Unclaimed Property	\$ 8.23	\$ 4.51	\$ 4.70	\$ 4.90
Estate Tax	\$ (0.17)	\$ 0.52	\$ -	\$ -
Other	\$ 34.90	\$ 35.94	\$ 38.10	\$ 40.27
Miscellaneous Revenue Subtotal	\$ 108.48	\$ 107.67	\$ 112.54	\$ 118.18
		-0.7%	4.5%	5.0%
Total General Fund Collections	\$ 2,264.47	\$ 2,444.47	\$ 2,535.61	\$ 2,645.42
		7.9%	3.7%	4.3%