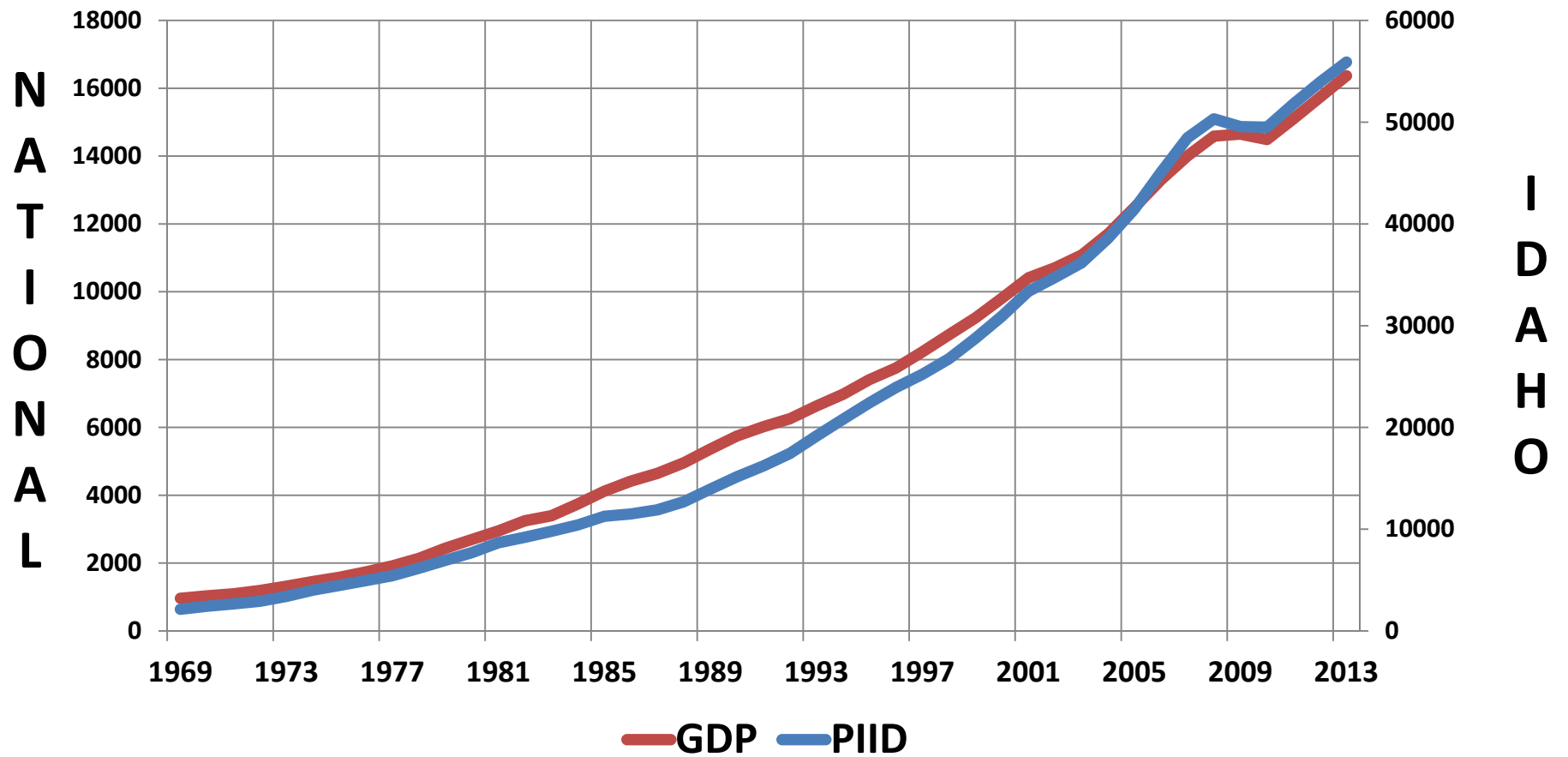


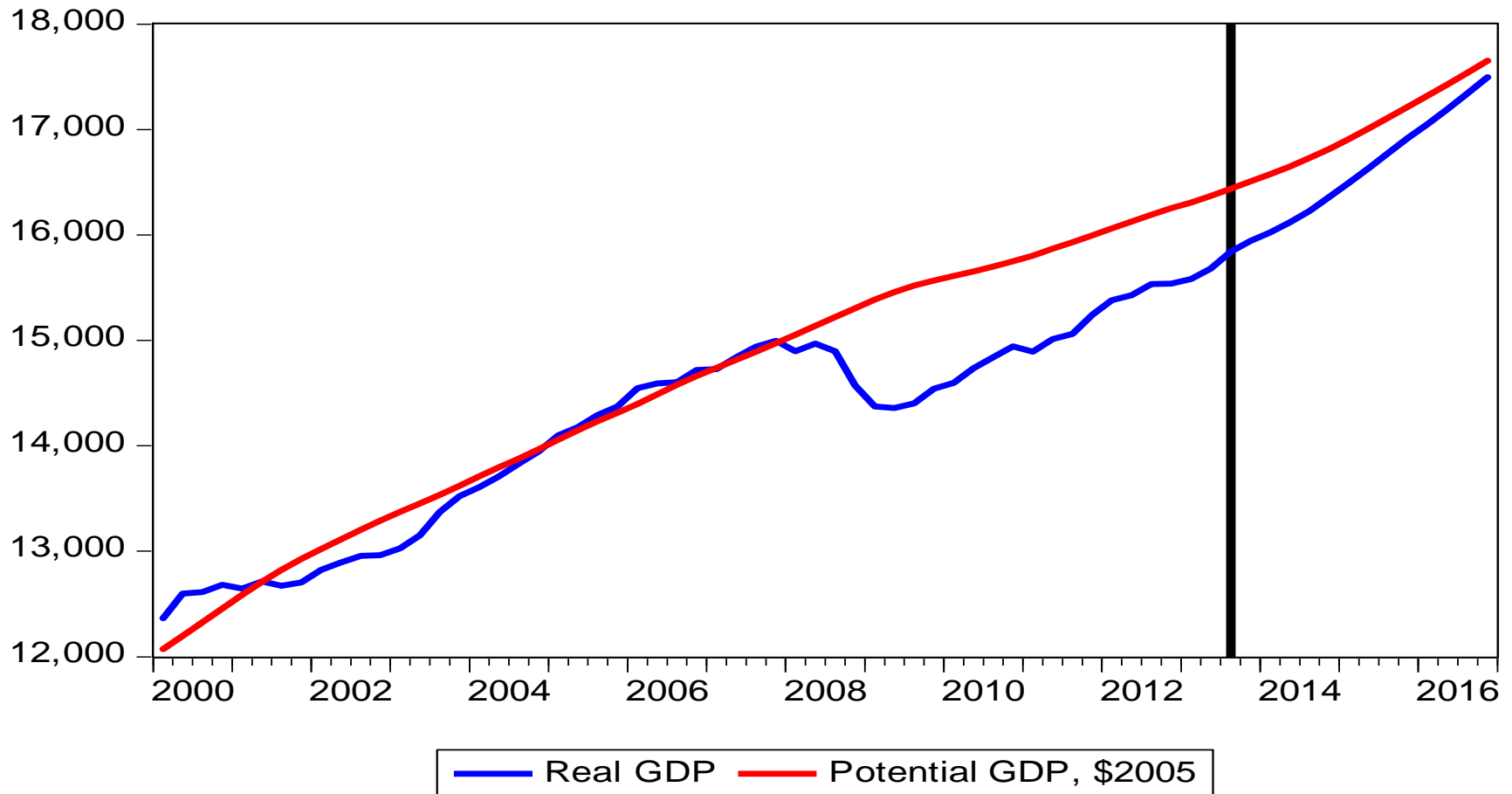
General Fund Revenues for Fiscal Years 2014 and 2015

Prepared and presented by:
Scott Benson – Idaho State University
Don Holley – Boise State University
Eric Stuen – University of Idaho



THE SINGLE MOST IMPORTANT DRIVER OF THE IDAHO ECONOMY IS THE STRENGTH (OR WEAKNESS) OF THE NATIONAL ECONOMY

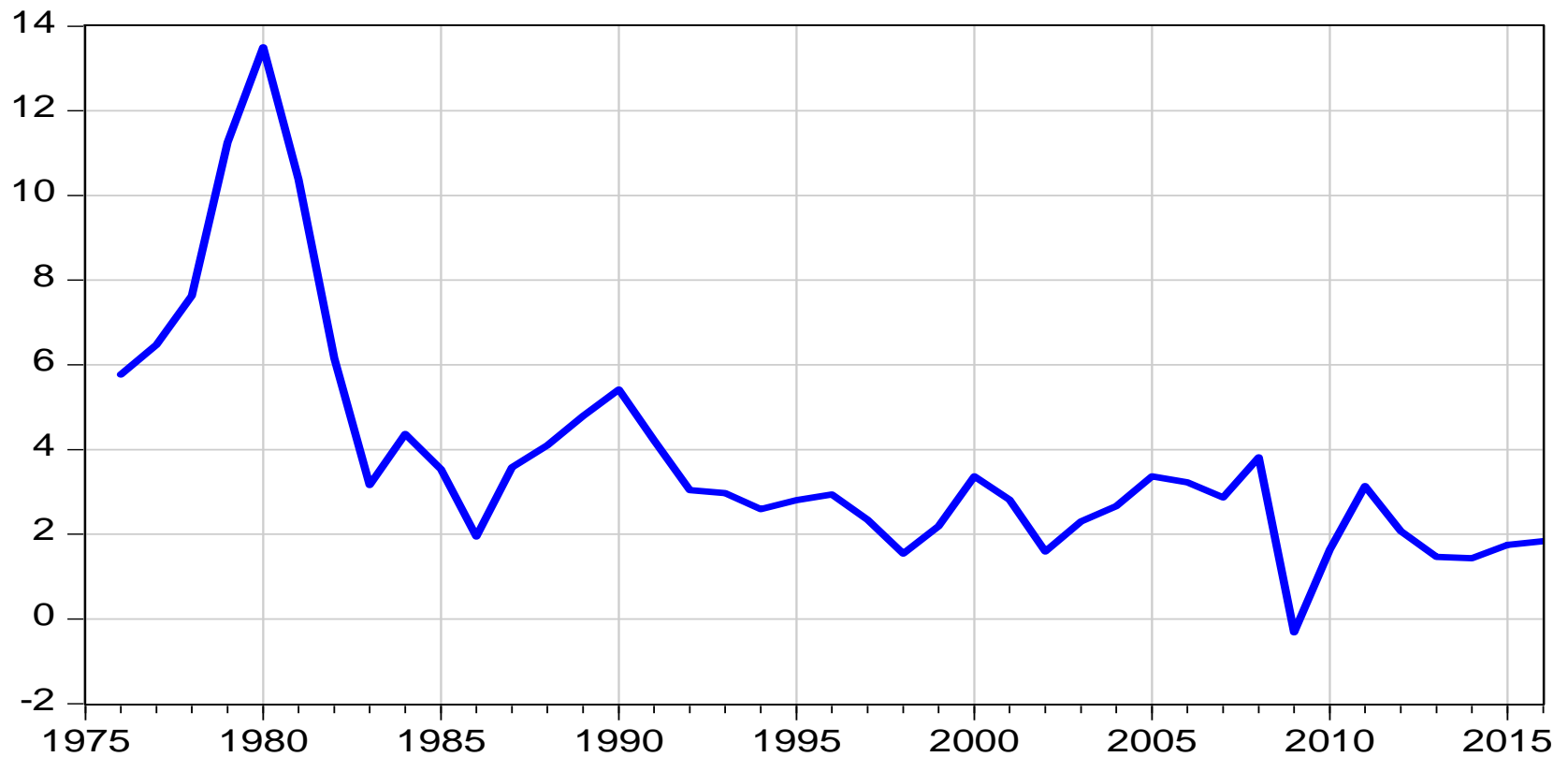
U. S. real and potential GDP, forecast by IHS Global Insight



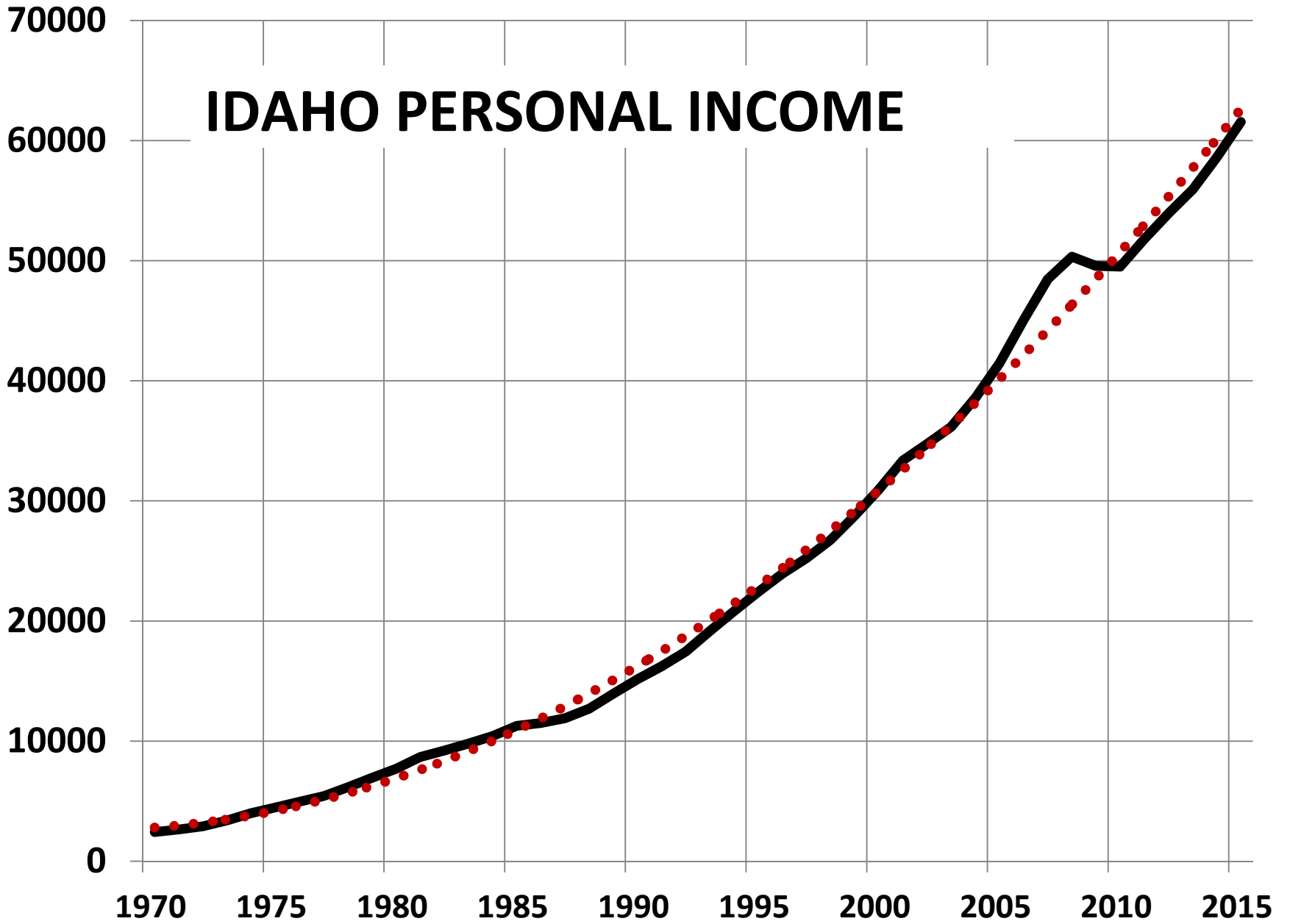
Inflation

forecast2013-2016: IHS Global Insight

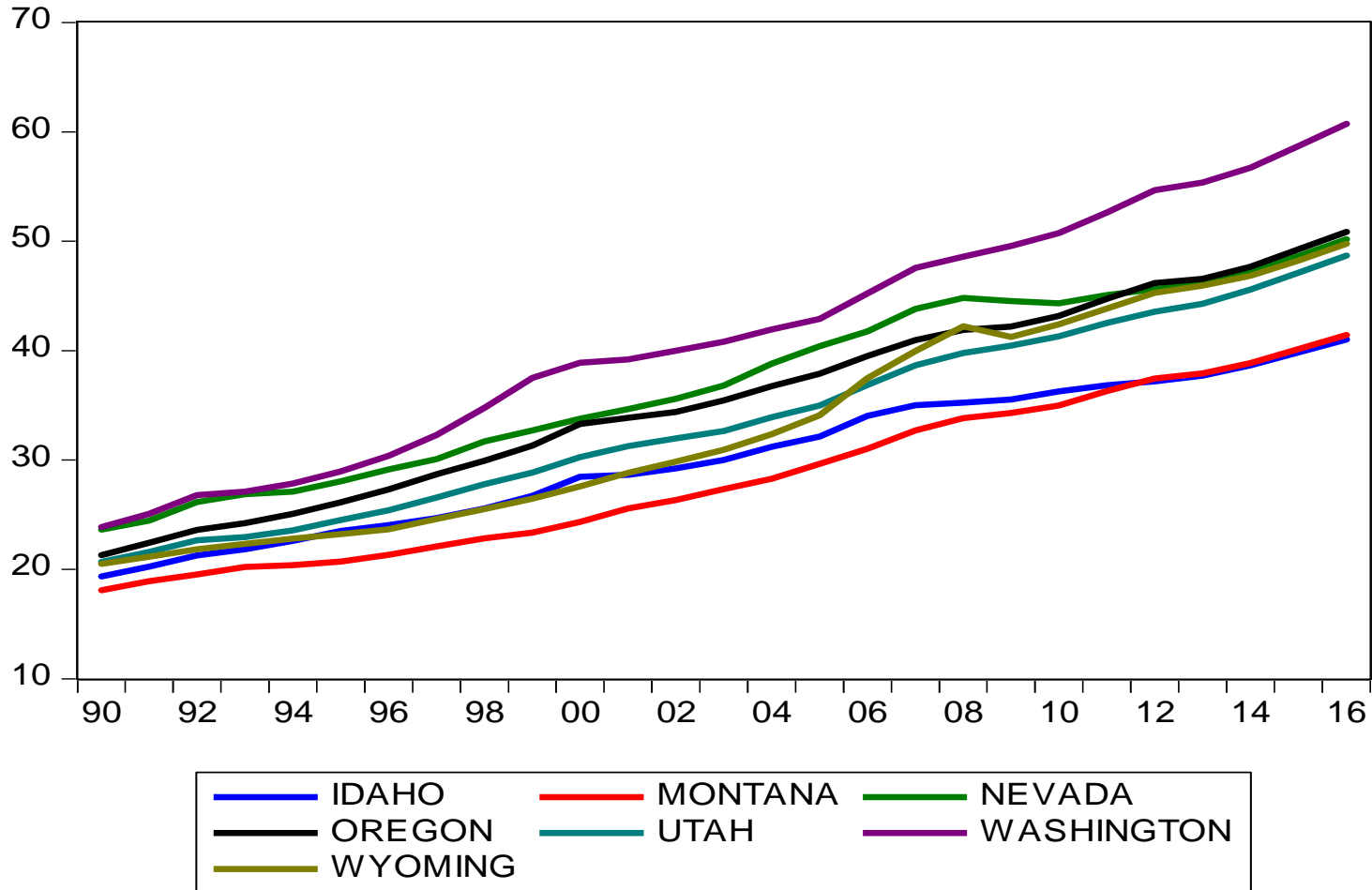
INFLATION



IDAHO PERSONAL INCOME

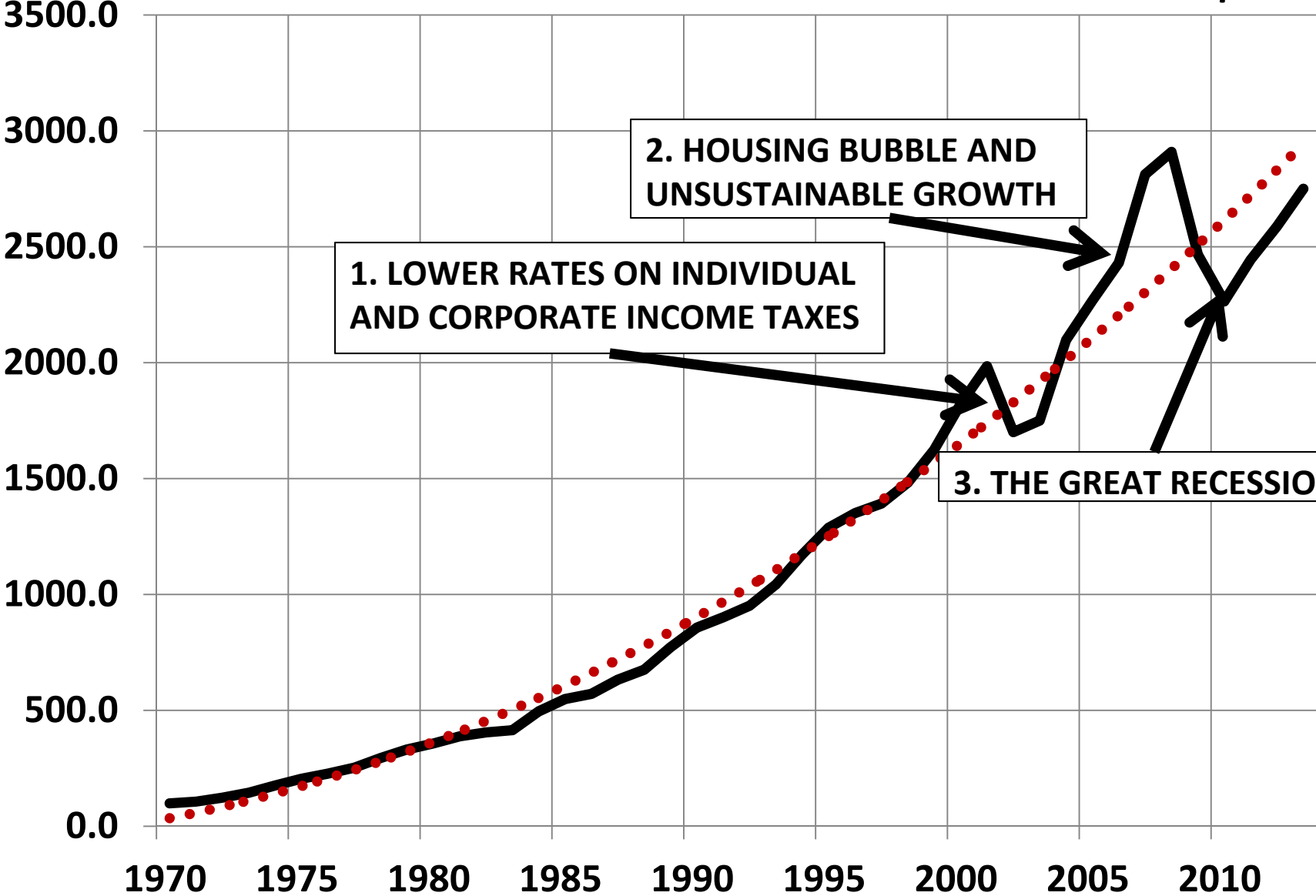


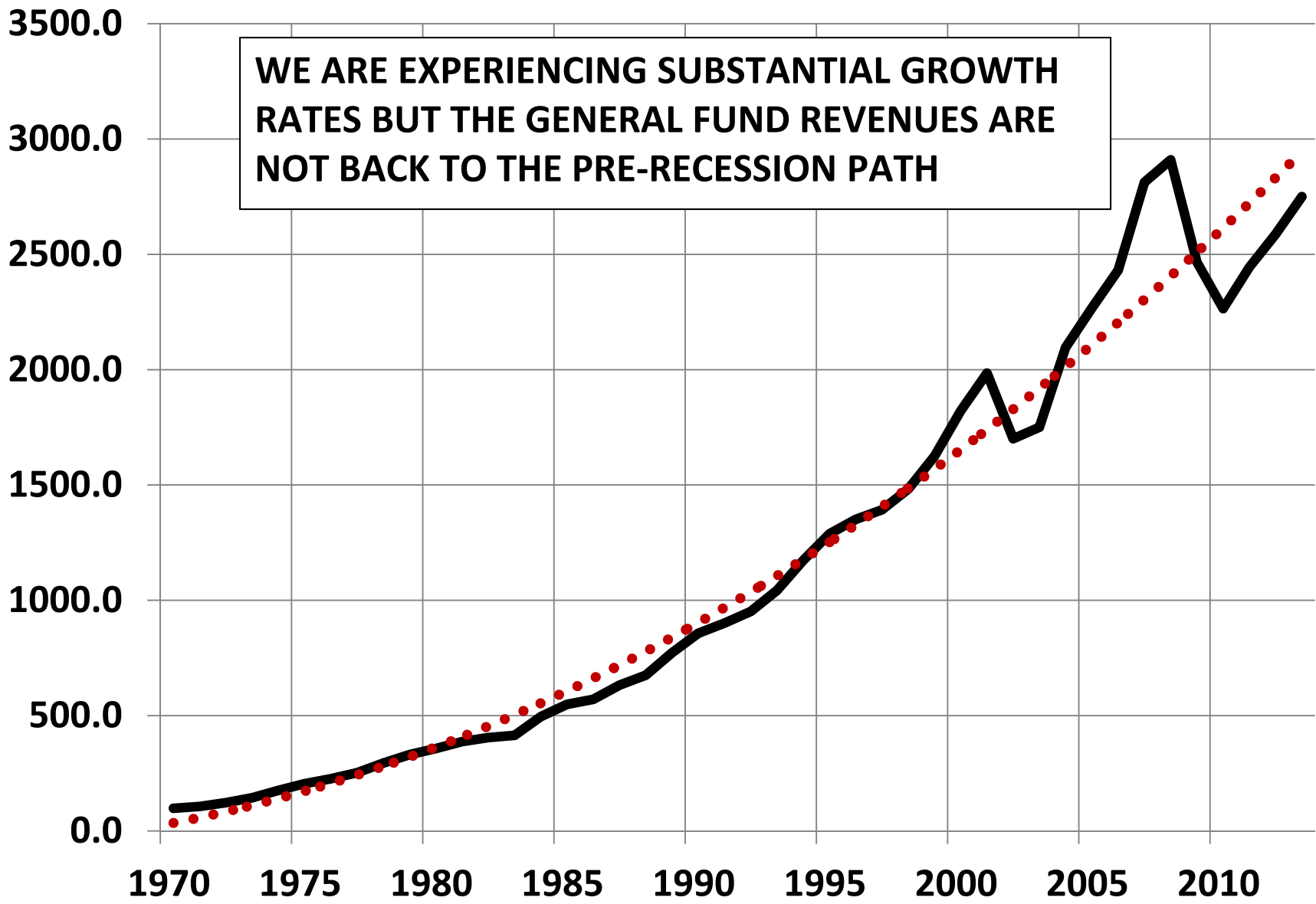
Average Annual Wage (1,000's) Total Nonfarm



Forecast by IHS Global Insight for 2013 – 2016

GENERAL FUND REVENUE IN MILLIONS OF \$





General Fund Revenue

Fiscal Years 2013 - 2016

	Actual	Projected Revenue		
	<u>FY 2013</u>	<u>FY 2014</u>	<u>FY 2015</u>	<u>FY 2016</u>
Individual Income Tax	\$1,284.38	\$1,380.0	\$1,475.0	\$1,556.0
Corporate Income Tax	\$ 198.7	\$ 214.6	\$ 219.6	\$ 222.0
Sales Tax	\$ 1,109.8	\$ 1,149.0	\$ 1,201.0	\$ 1,250.2
Product Taxes	\$ 49.9	\$ 46.5	\$ 51.6	\$ 57.3
Miscellaneous Revenue	\$ 107.6	\$ 114.6	\$ 121.6	\$ 128.1
Total General Fund Revenue	\$ 2,750.3 6.3%	\$ 2,904.7 5.6%	\$ 3,068.7 5.6%	\$ 3,213.6 4.7%

General Fund Revenue

Fiscal Years 2013 - 2016

	Actual	Projected Revenue		
	<u>FY 2013</u>	<u>FY 2014</u>	<u>FY 2015</u>	<u>FY 2016</u>
Individual Income Tax	\$1,284.38 6.5%	\$1,380.0 7.4%	\$1,475.0 6.9%	\$1,556.0 5.5%
Corporate Income Tax	\$ 198.7 6.2%	\$ 214.6 8.0%	\$ 219.6 2.3%	\$ 222.0 1.1%
Sales Tax	\$ 1,109.8 8.0%	\$ 1,149.0 3.5%	\$ 1,201.0 4.5%	\$ 1,250.2 4.1%
Product Taxes	\$ 49.9 15.5%	\$ 46.5 -6.8%	\$ 51.6 11.1%	\$ 57.3 11.0%
Miscellaneous Revenue	\$ 107.6 -13.0%	\$ 114.6 6.6%	\$ 121.6 6.0%	\$ 128.1 5.4%
Total General Fund Revenue	\$ 2,750.3 6.3%	\$ 2,904.7 5.6%	\$ 3,068.7 5.6%	\$ 3,213.6 4.7%

	2013 Act	2014	2015	2016
Individual Income Tax	1,284.38	1,380.00	1,475.00	1,556.00
Corporate Income Tax	198.66	214.55	219.58	222.00
Sales Tax	1,109.83	1,149.00	1,201.00	1,250.24
Cigarette Tax	13.08	5.00	5.00	5.00
Tobacco Tax	10.01	10.65	11.35	12.35
Beer Tax	1.93	1.96	1.99	2.03
Wine Tax	3.91	4.03	4.15	4.30
Liquor Dispensary	20.93	24.83	29.12	33.59
Total: Product Taxes	49.86	46.47	51.61	57.27
Kilowatt Hour Tax	1.92	1.92	1.92	1.92
Mine License Tax	0.53	0.53	0.53	0.53
Treasurer	0.36	1.15	2.00	3.00
Judiciary	4.59	4.59	4.59	4.59
Insurance Premium Tax	55.62	58.79	61.37	64.00
State Police	0.13	-	-	-
Secretary of State	2.54	2.69	2.86	3.00
Lands	0.83	0.83	0.83	0.83
Unclaimed Property	7.00	7.38	7.78	8.00
Estate Tax	0.06	-	-	-
Other Misc	33.98	36.74	39.67	42.20
Total Miscellaneous Revenues	107.56	114.64	121.55	128.07
Total General Fund	2,750.29	2,904.66	3,068.75	3,213.58