

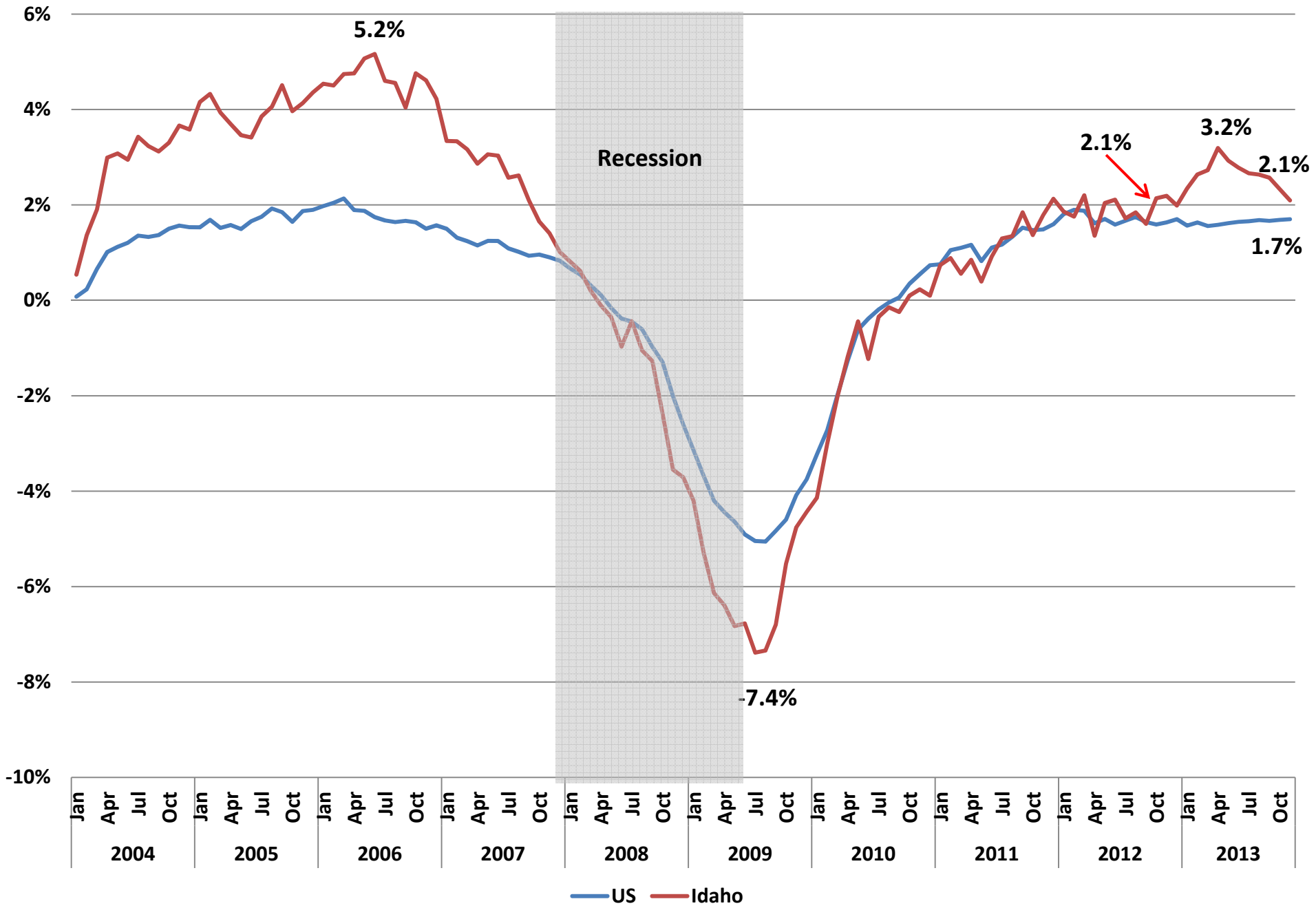


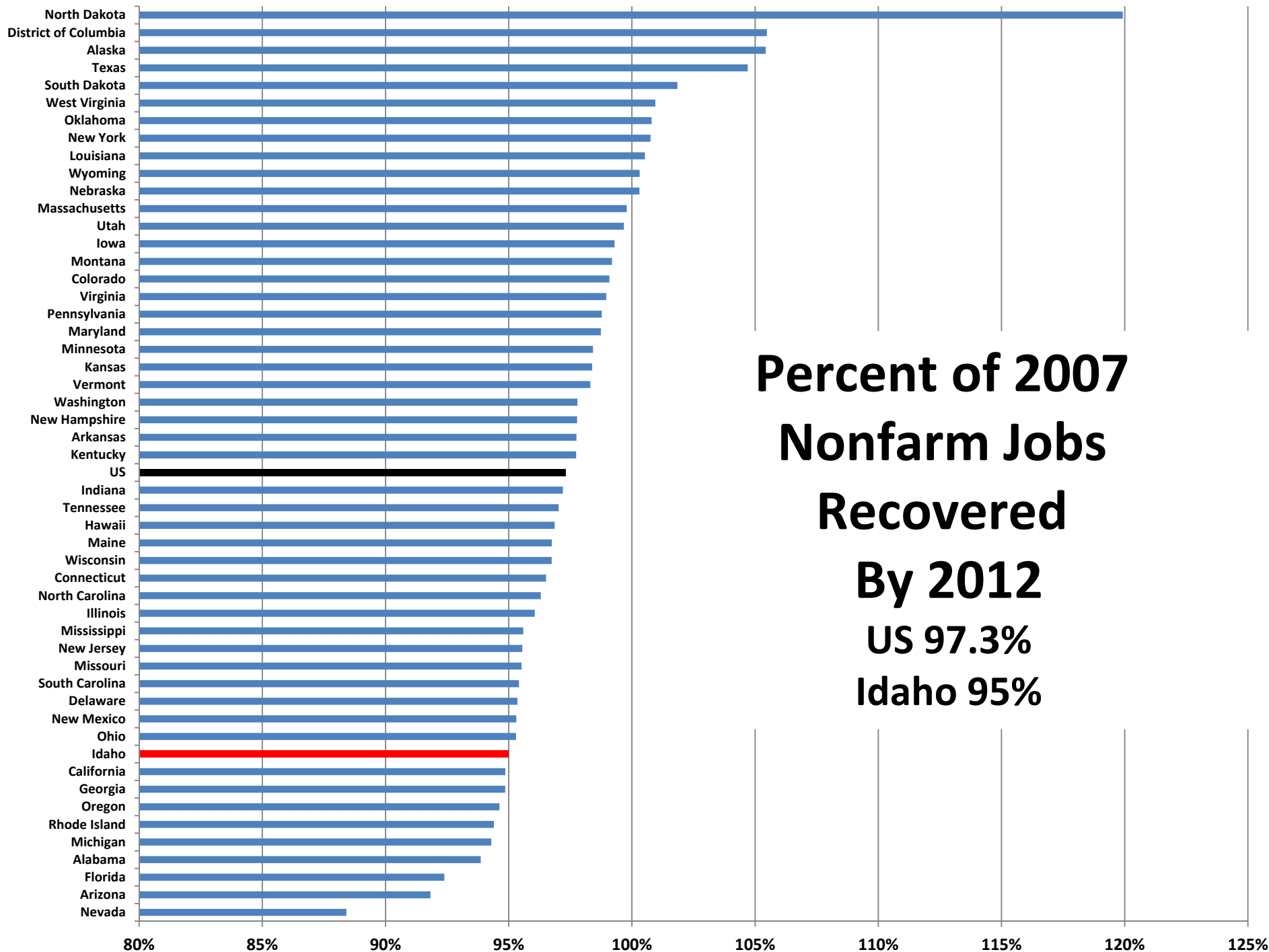
# **Economic Outlook and Revenue Assessment Committee**

Idaho Department of Labor  
Communications and Research

Jan. 2, 2014

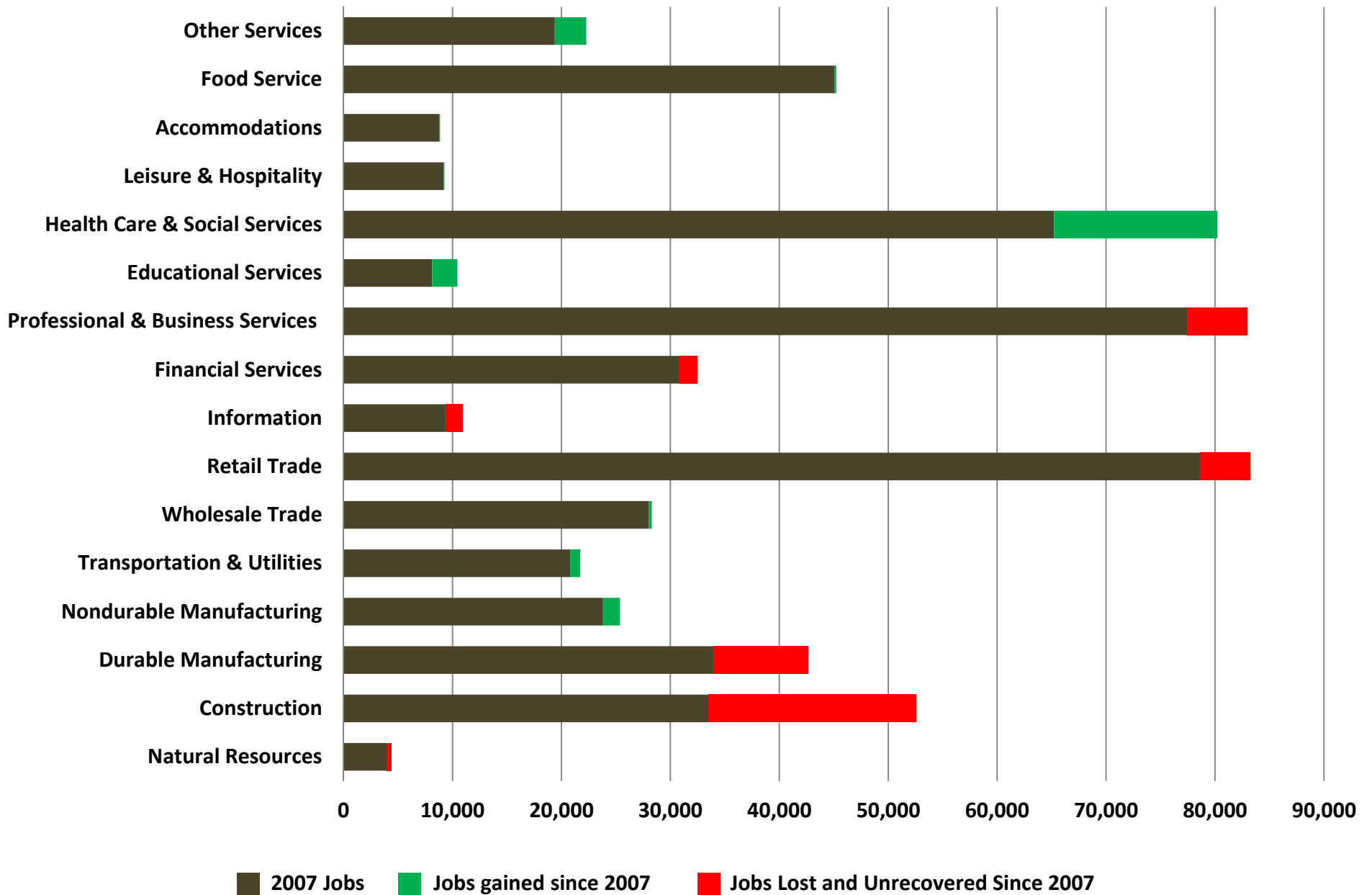
# Percentage Change in Jobs Year Over Year





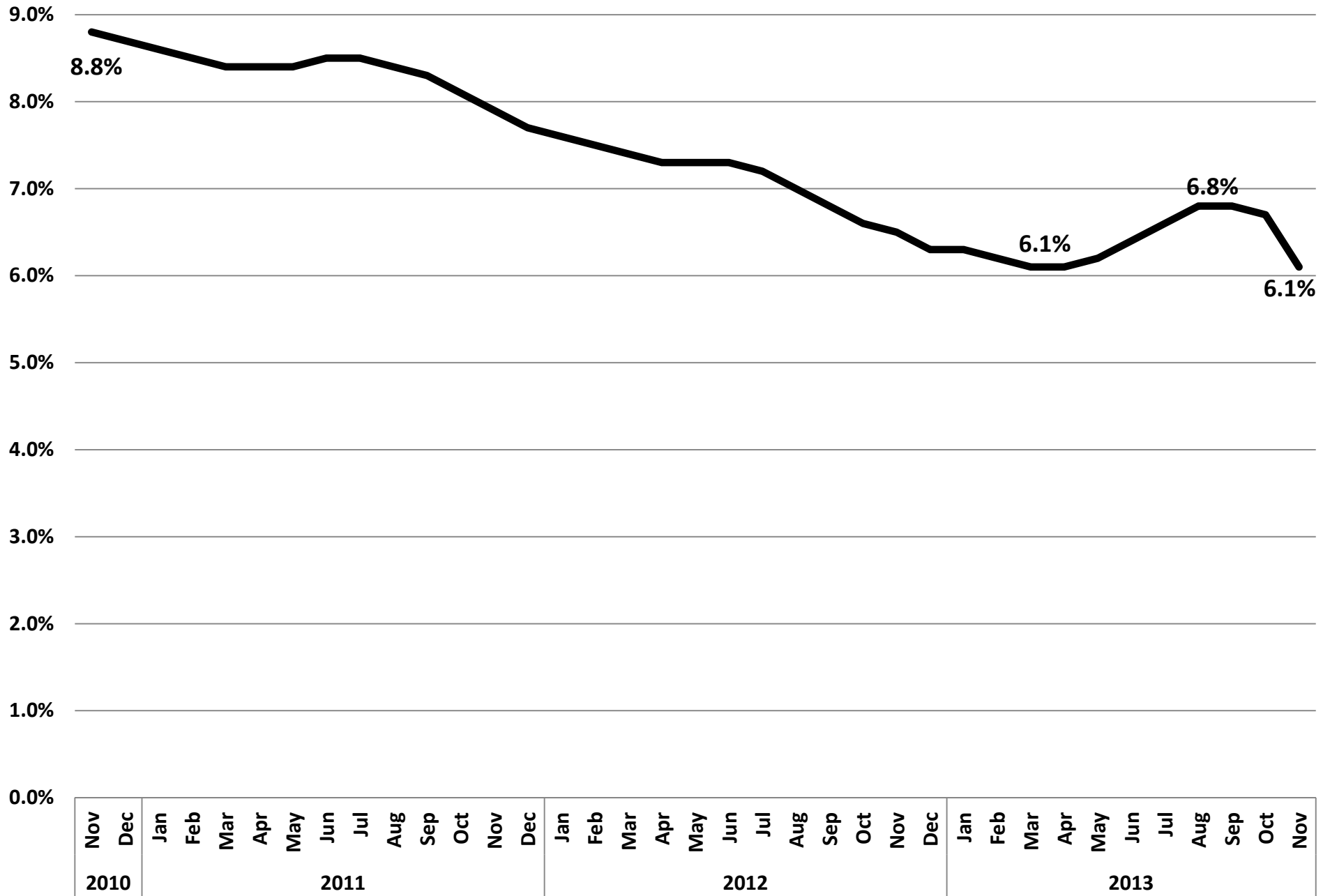
**Percent of 2007  
Nonfarm Jobs  
Recovered  
By 2012  
US 97.3%  
Idaho 95%**

# Total Jobs By Sector 2007 to 2013





# Monthly Unemployment Rate

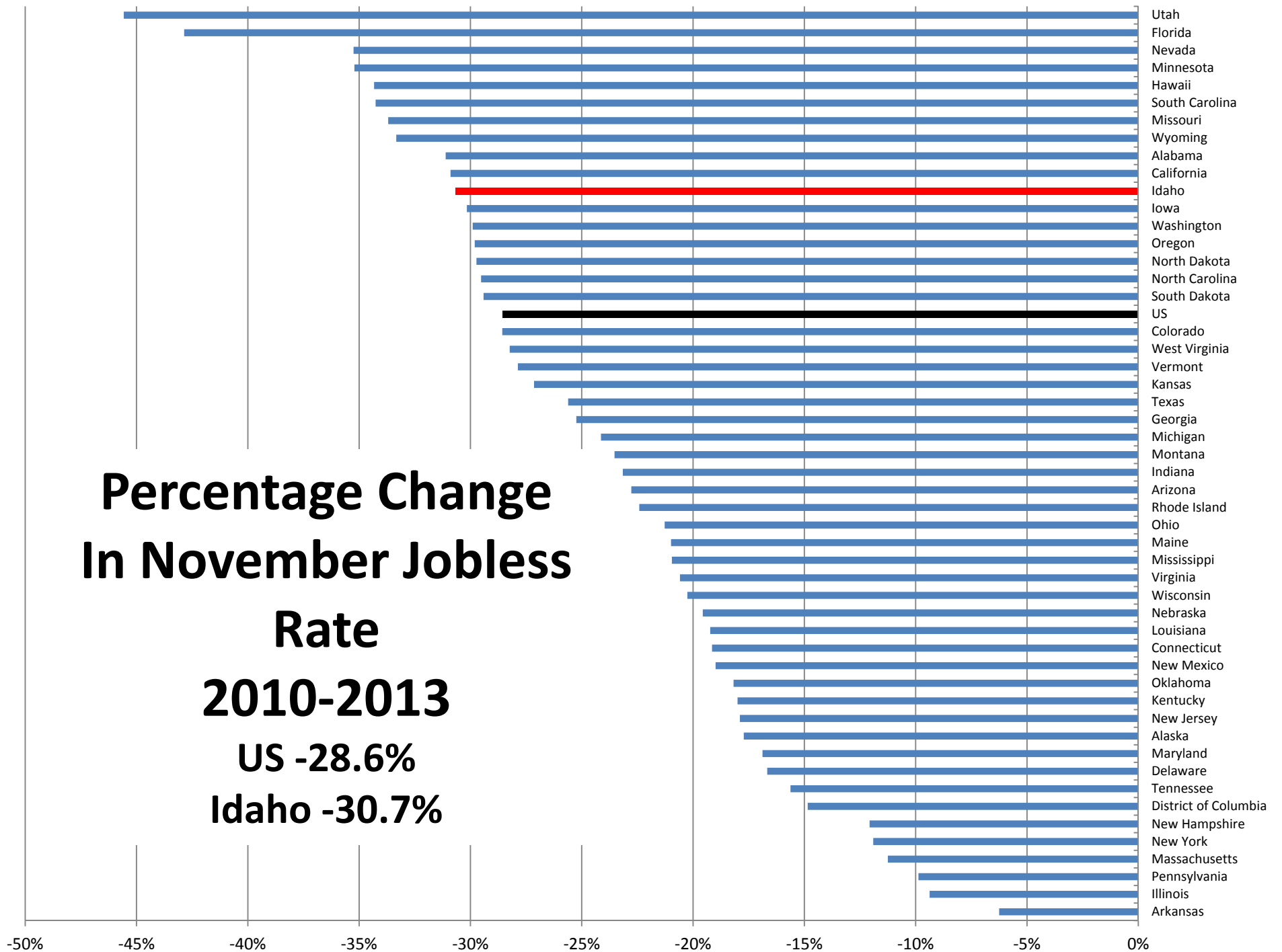


# Percentage Change In November Jobless Rate

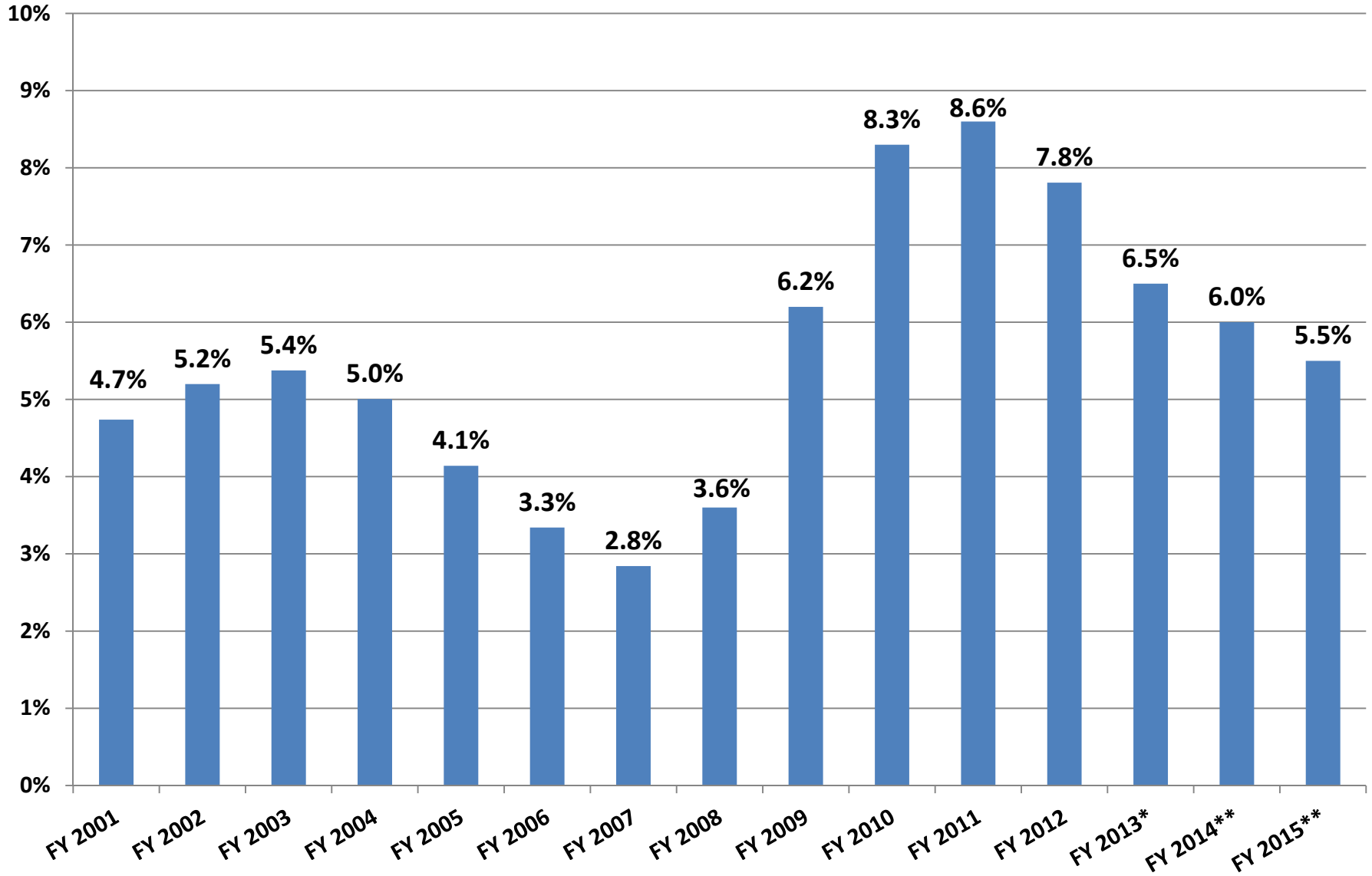
**2010-2013**

**US -28.6%**

**Idaho -30.7%**



# Annual Idaho Unemployment Rate

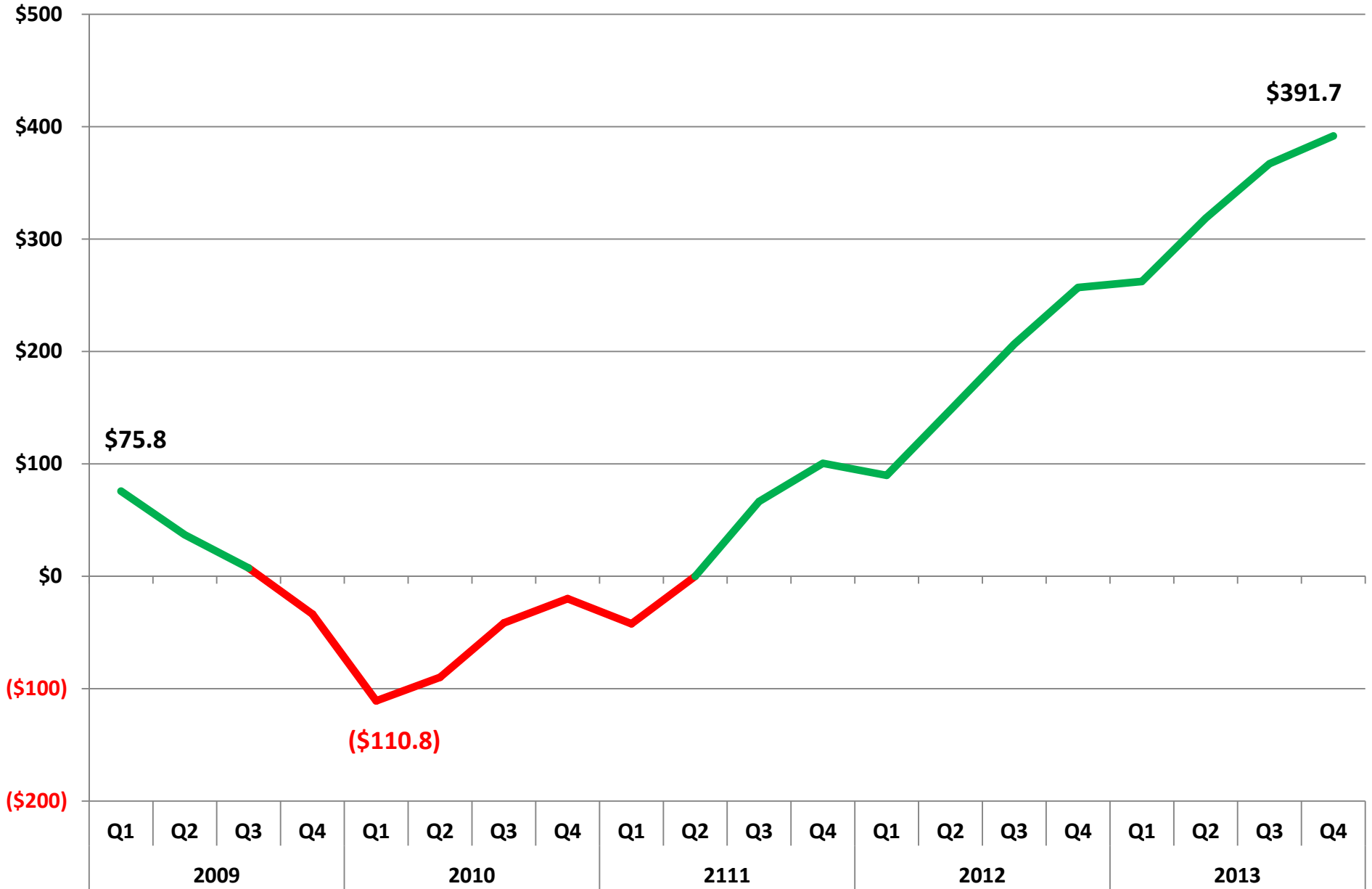


\* Preliminary \*\* Projected

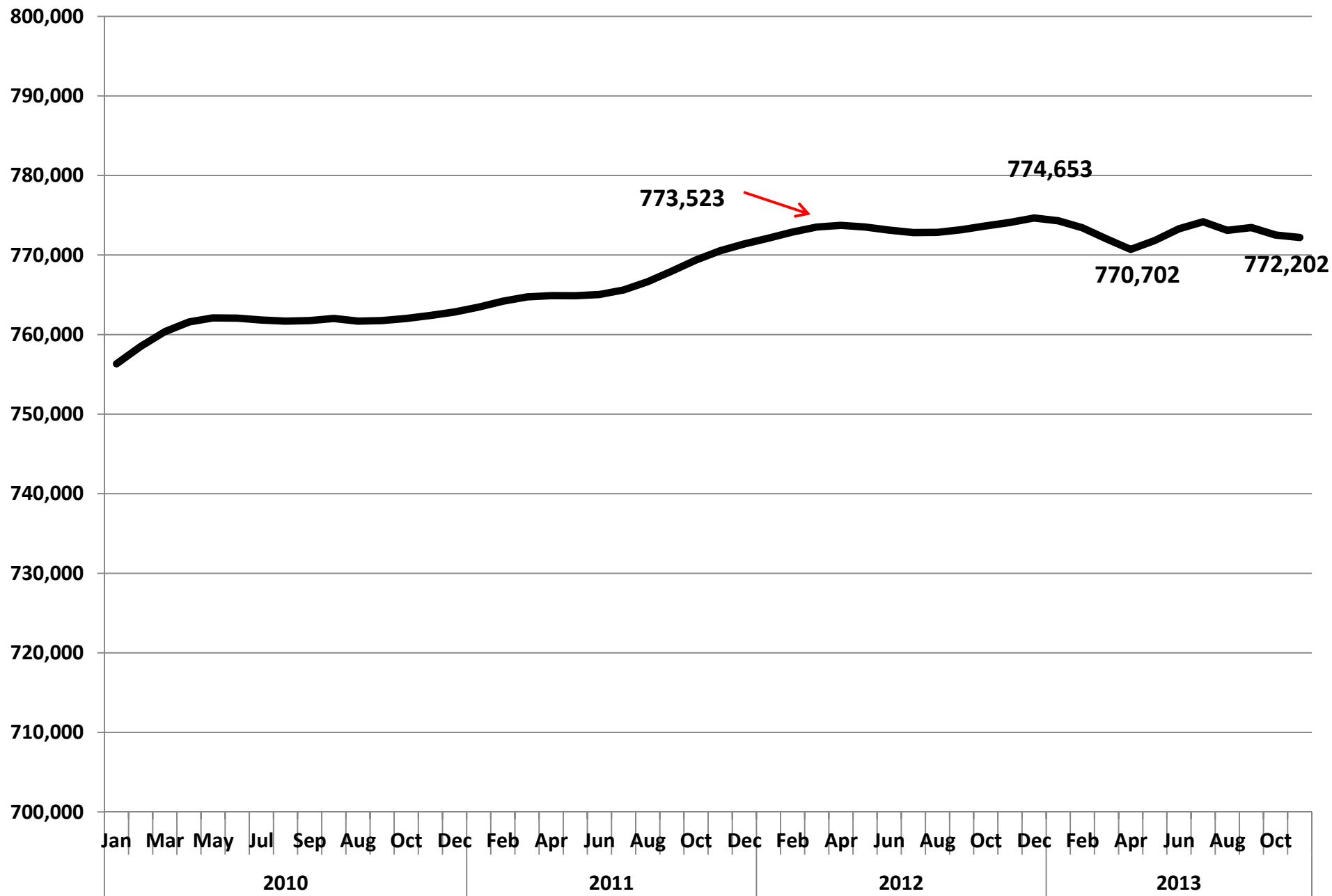


# Quarterly Trust Fund Balance

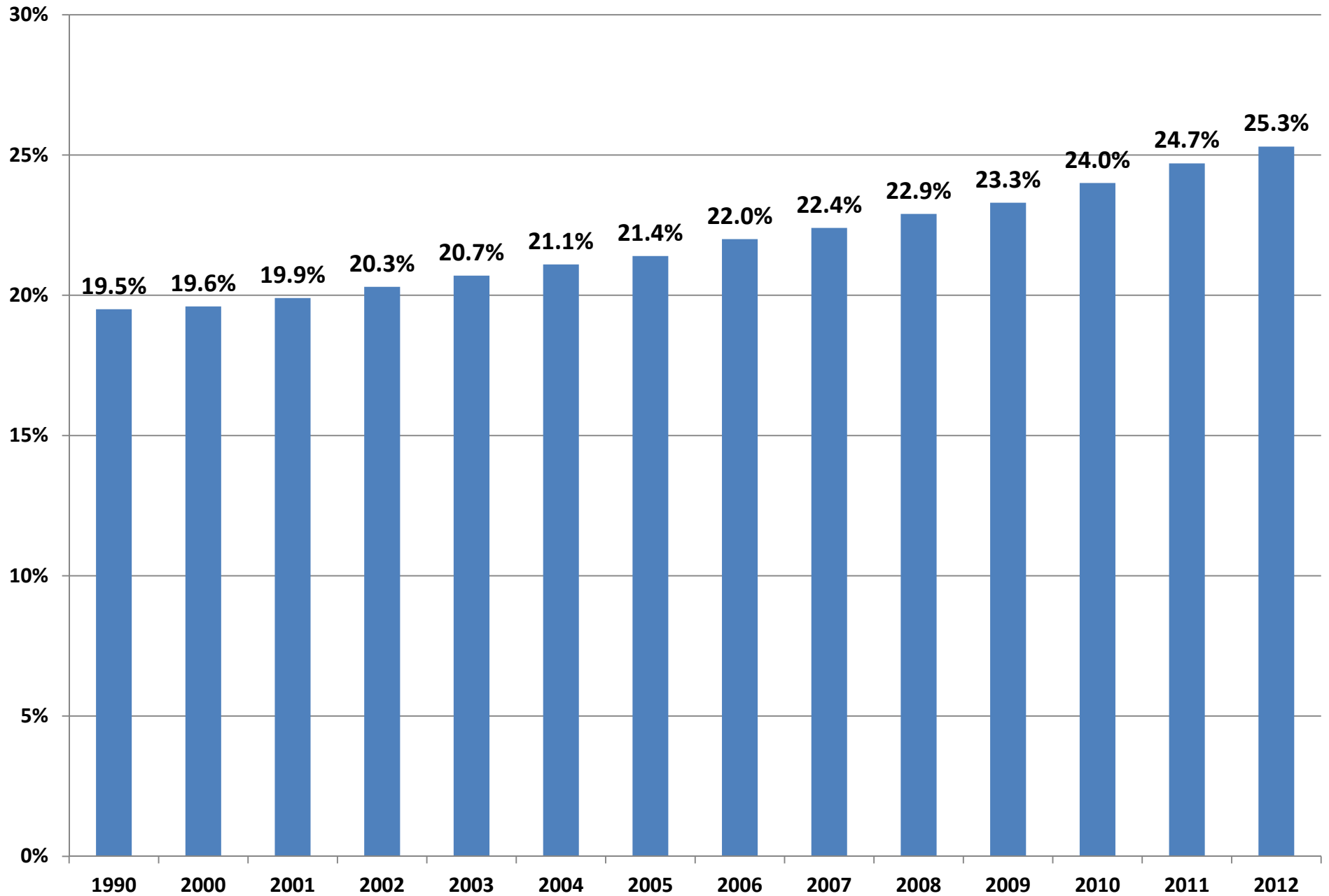
(In Millions)

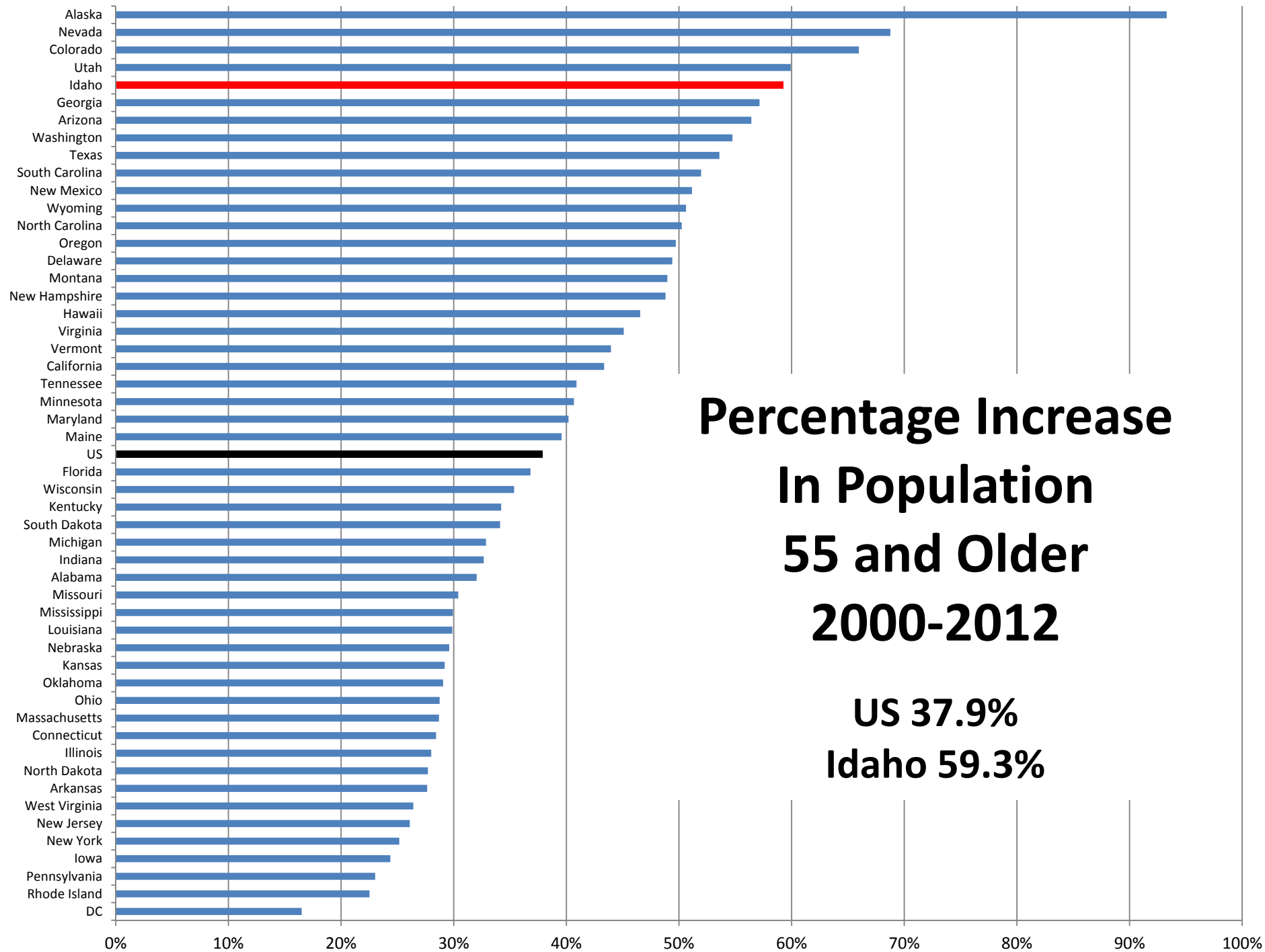


# Monthly Labor Force



# Percent of Population 55 and Older



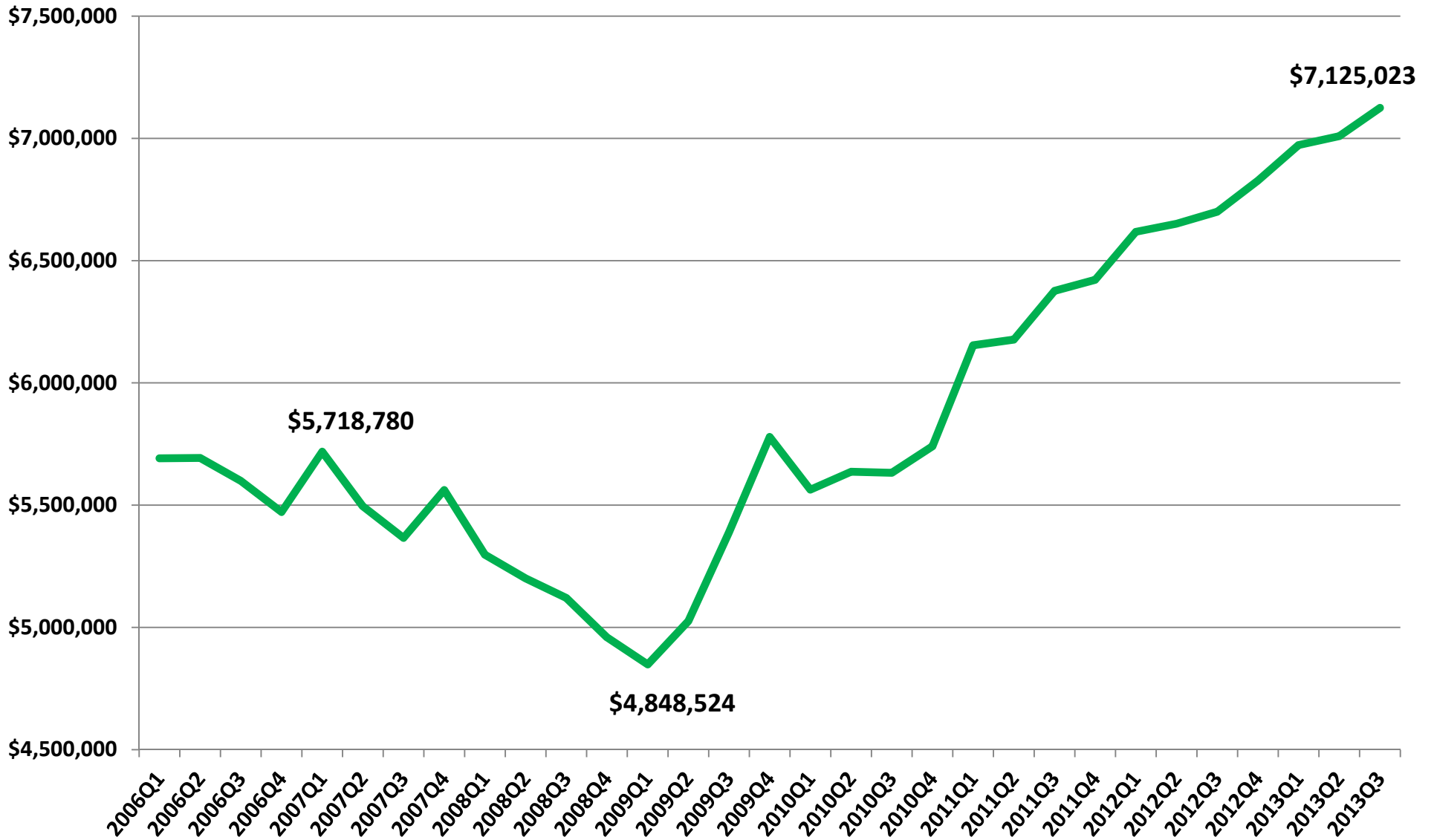


**Percentage Increase  
In Population  
55 and Older  
2000-2012**

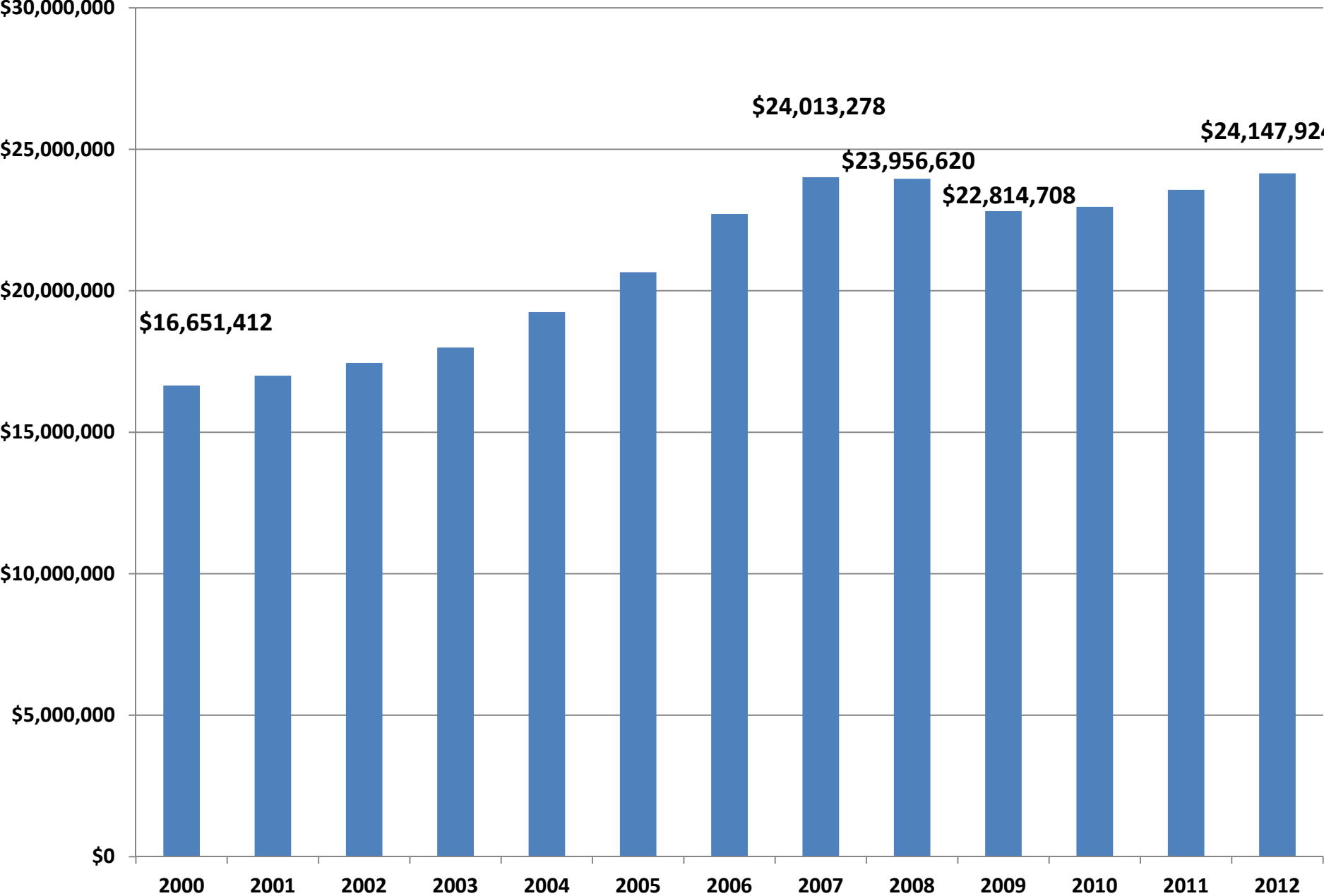
**US 37.9%  
Idaho 59.3%**

# Idaho Business Profits Annualized by Quarter

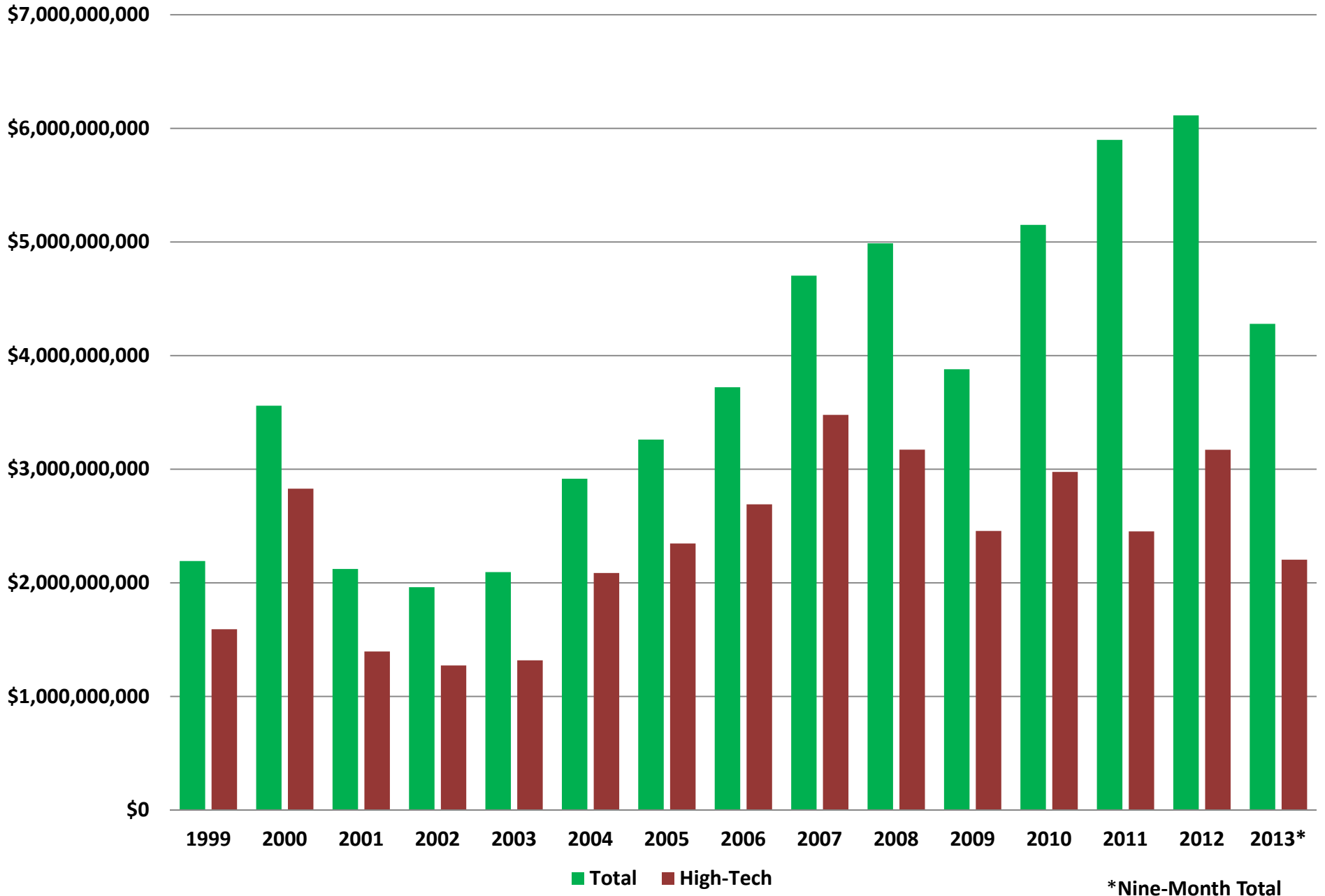
(in thousands)



# Annual Total Wages

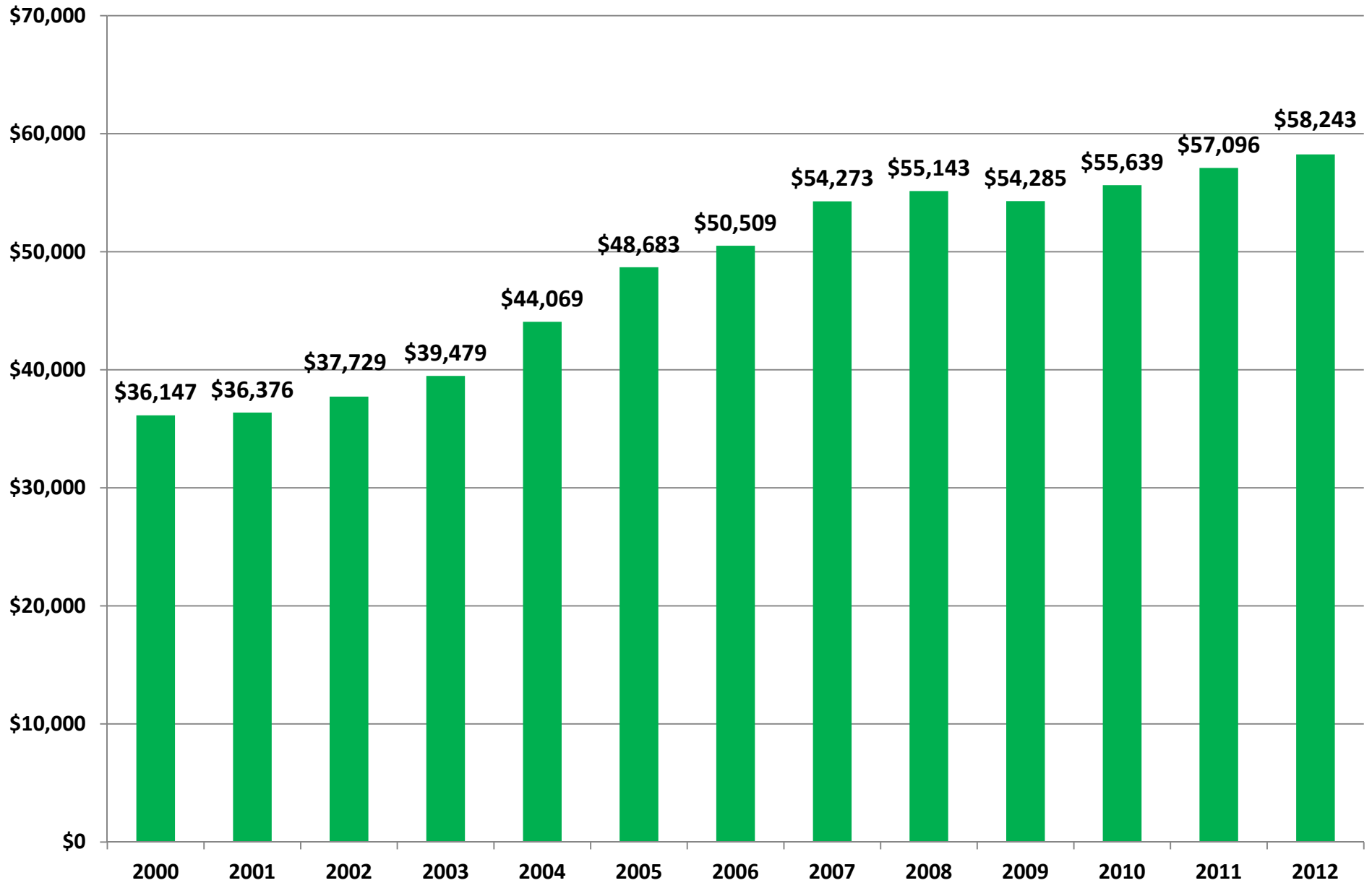


# Idaho Annual Export Values

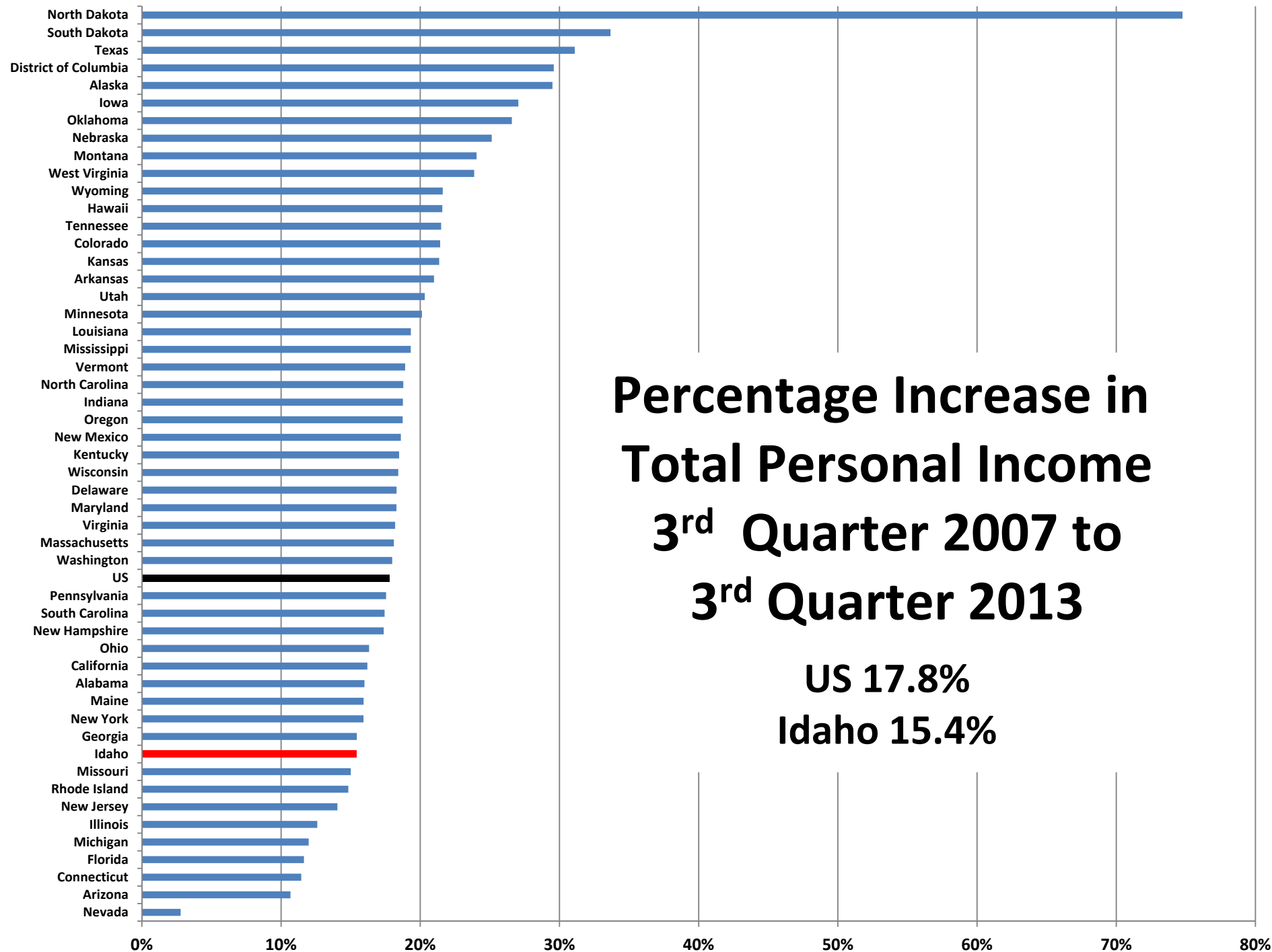


# Idaho Gross State Product

(In Millions)

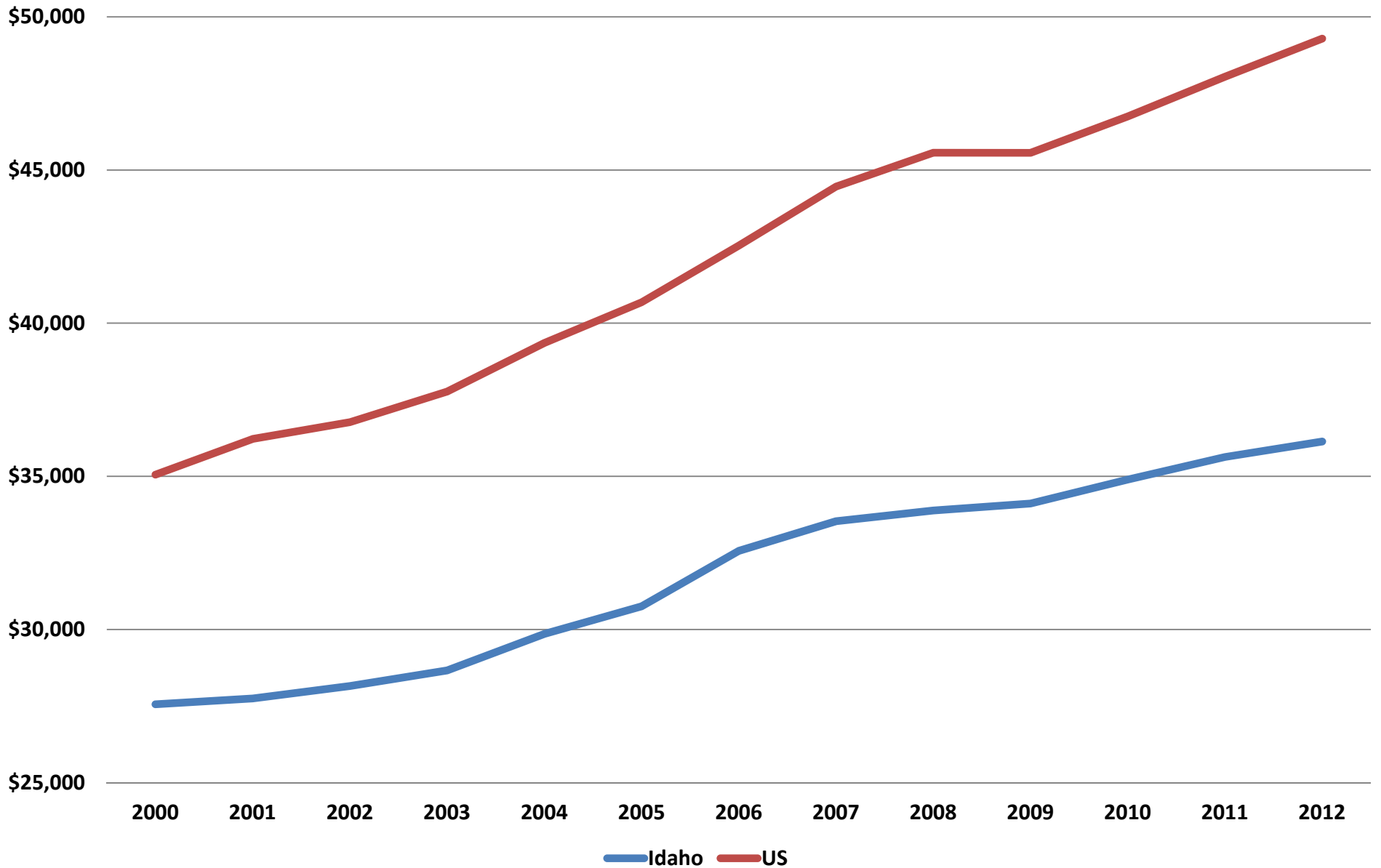






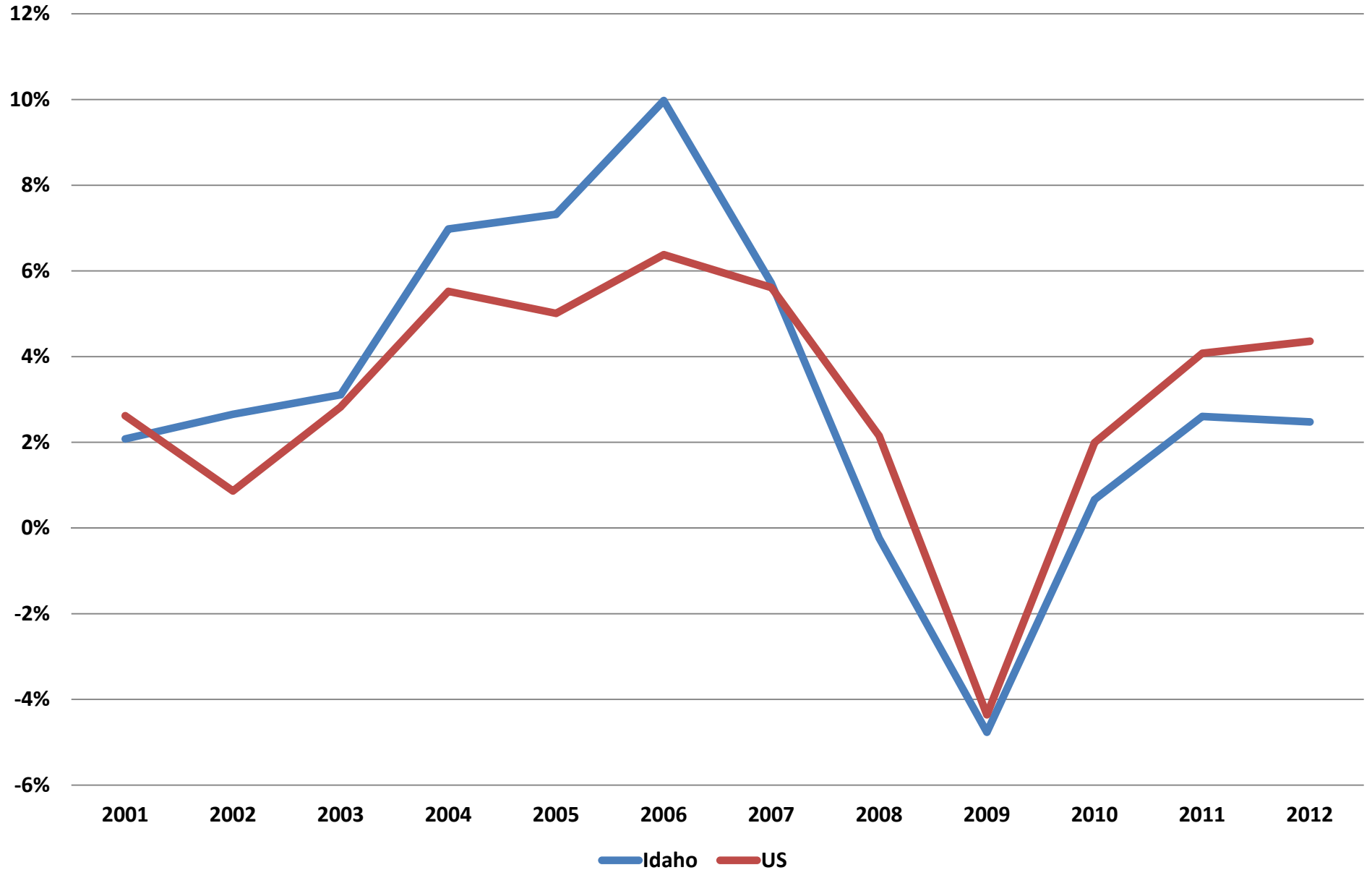
# Average Annual Wage, US and Idaho

## 2000-2012

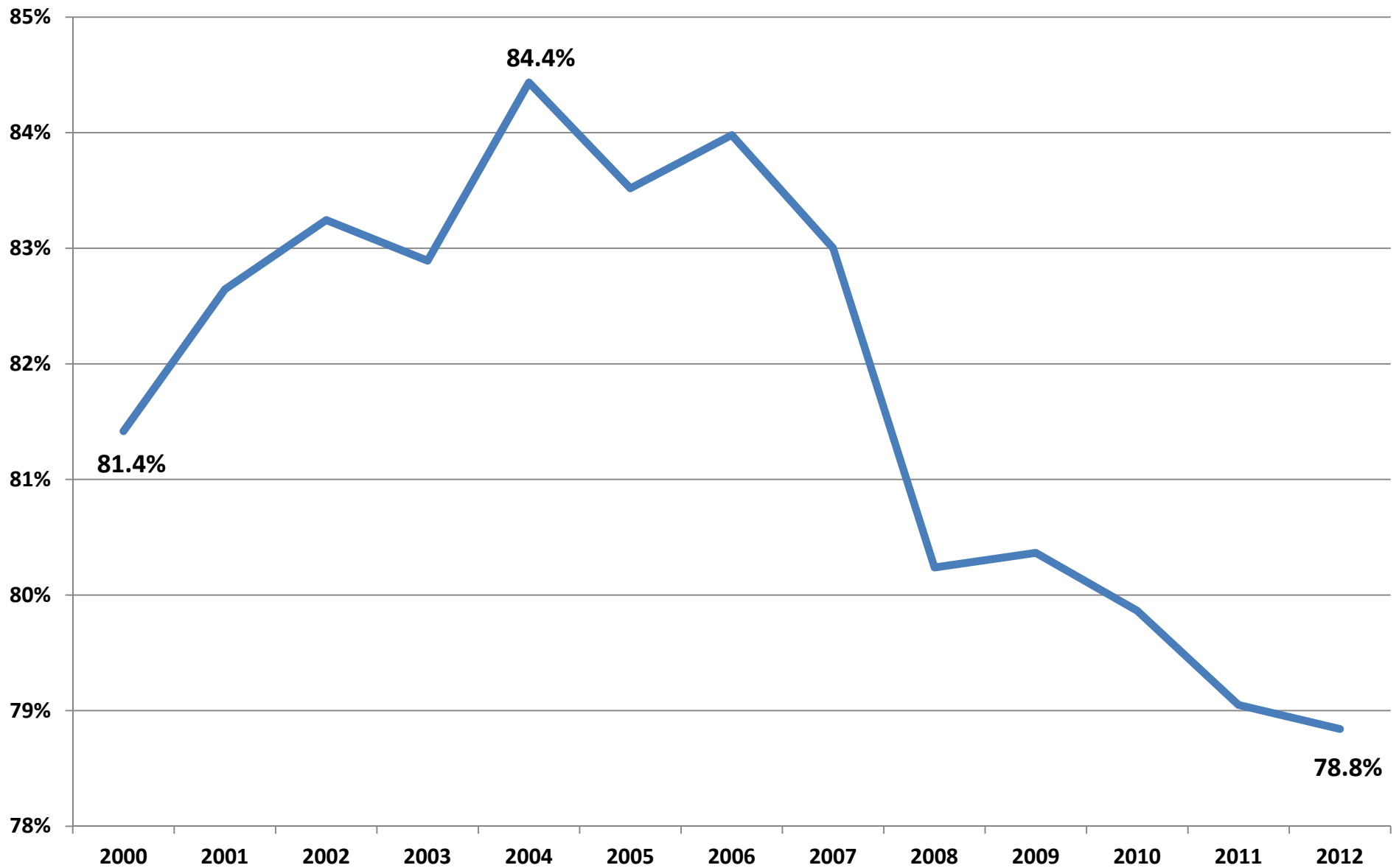


# Annual Percentage Growth in Total Wages

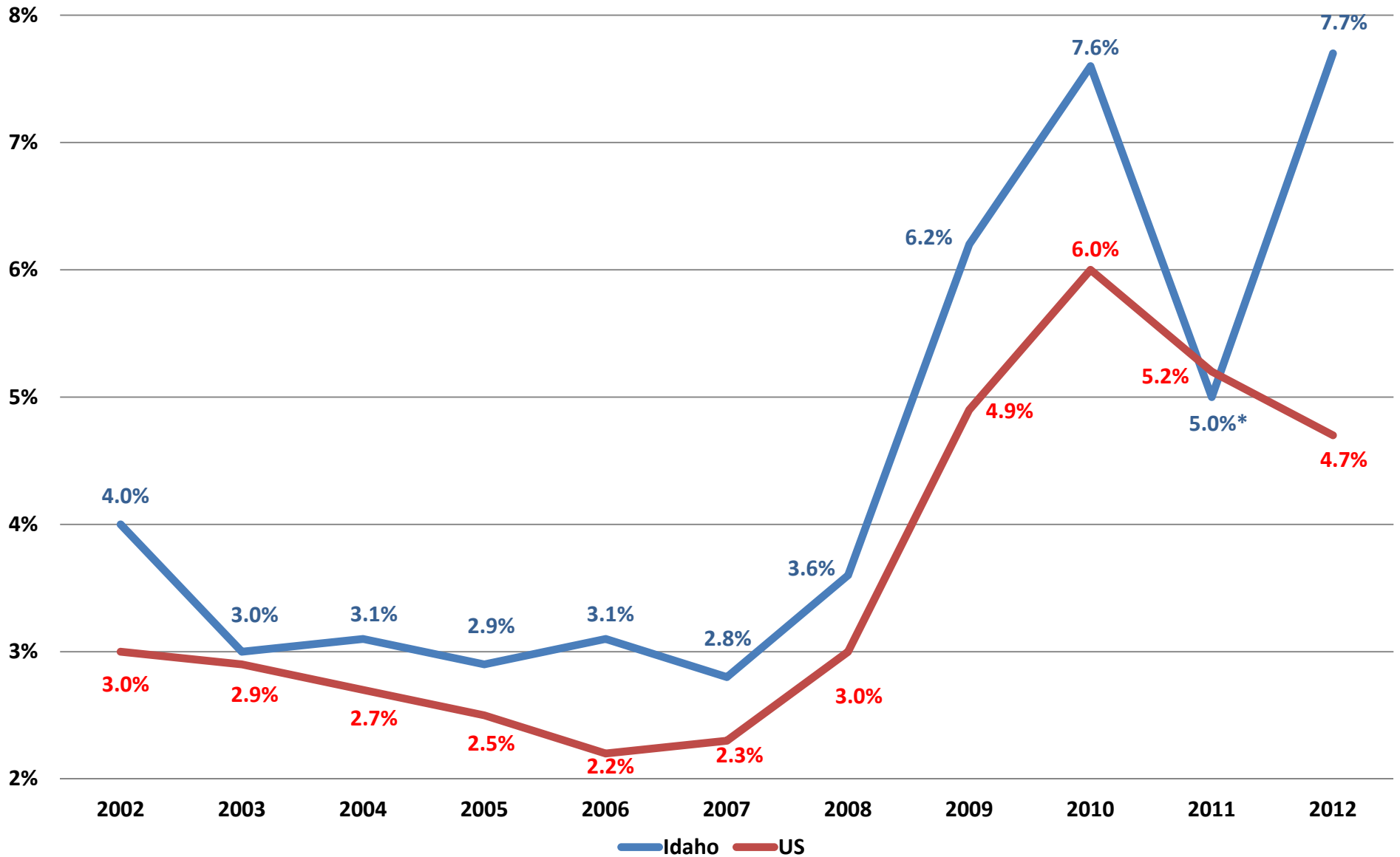
2001-2012

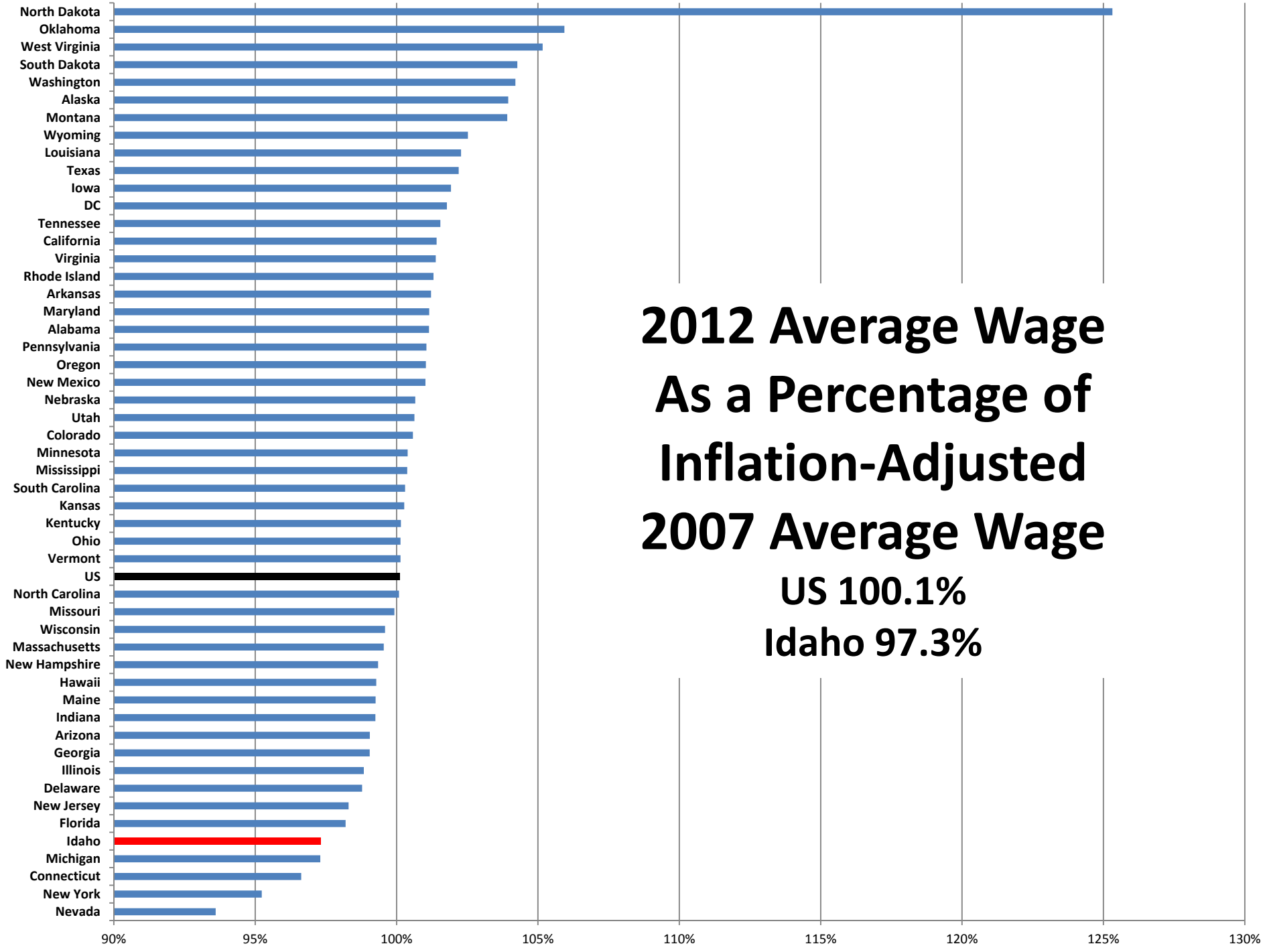


# Idaho Per Capita Income as Percentage Of US Per Capita Income



# Percent of Hourly Jobs Paying Minimum Wage



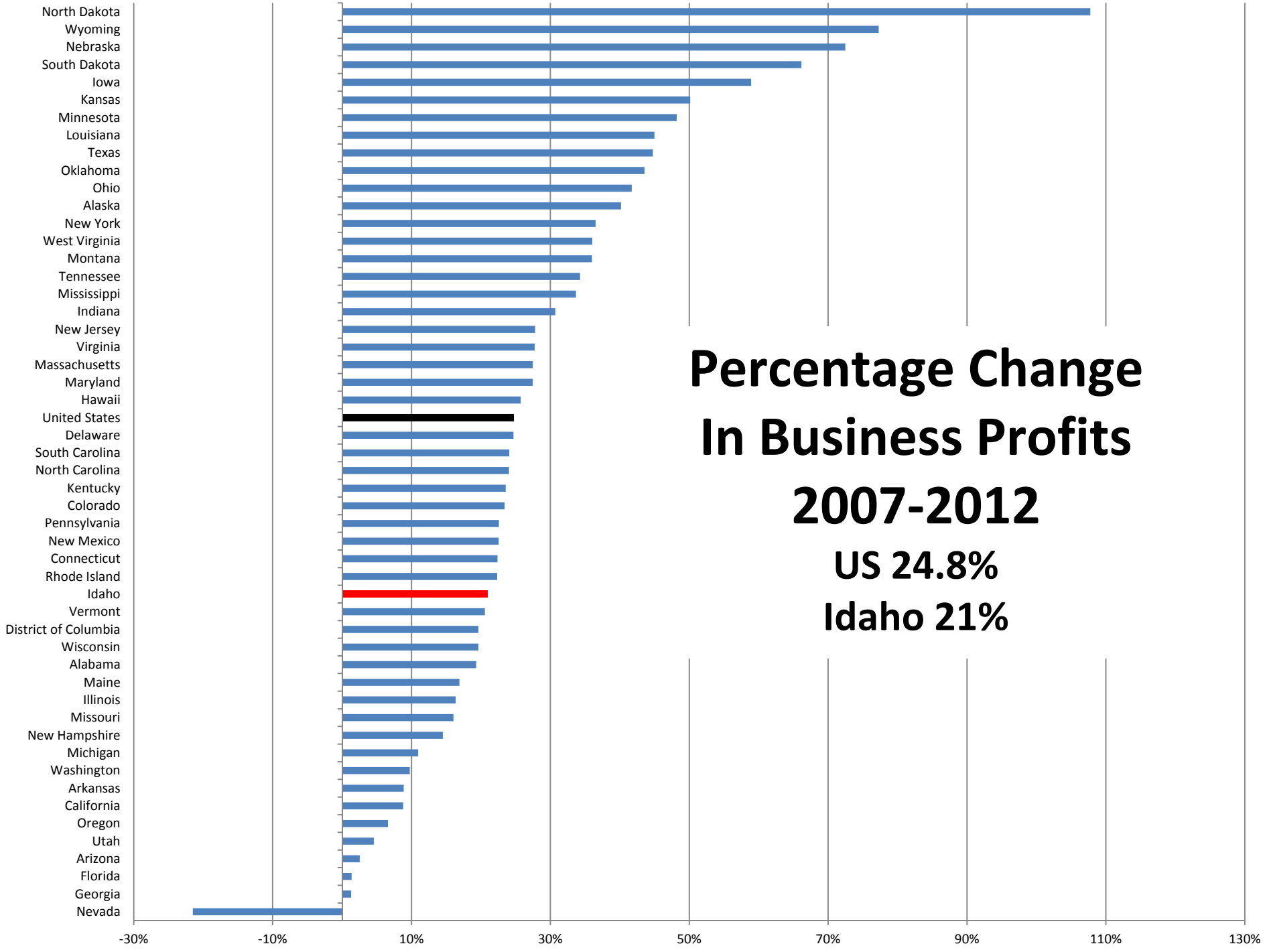


**2012 Average Wage  
As a Percentage of  
Inflation-Adjusted  
2007 Average Wage**

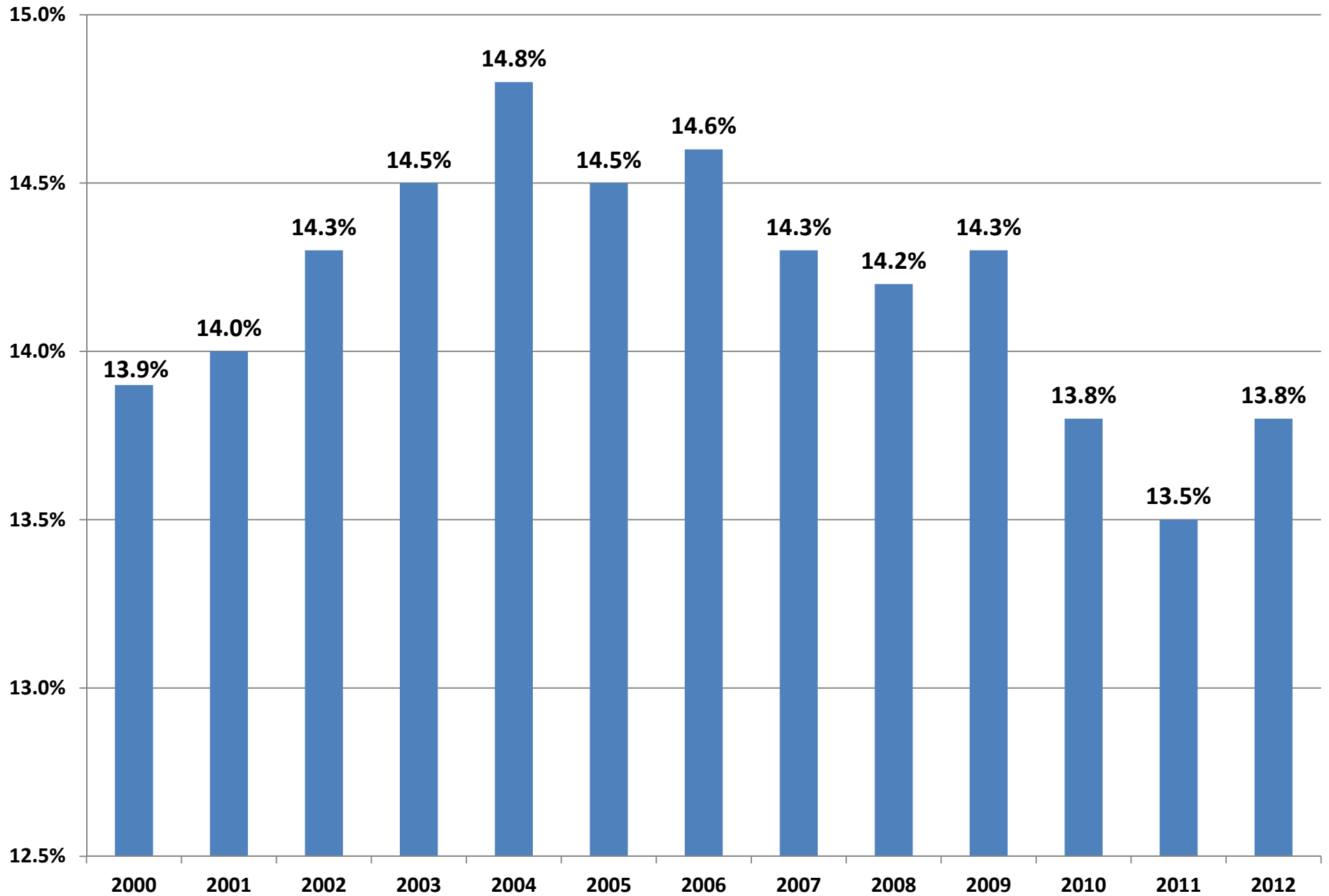
**US 100.1%**  
**Idaho 97.3%**

# Percentage Change In Business Profits 2007-2012

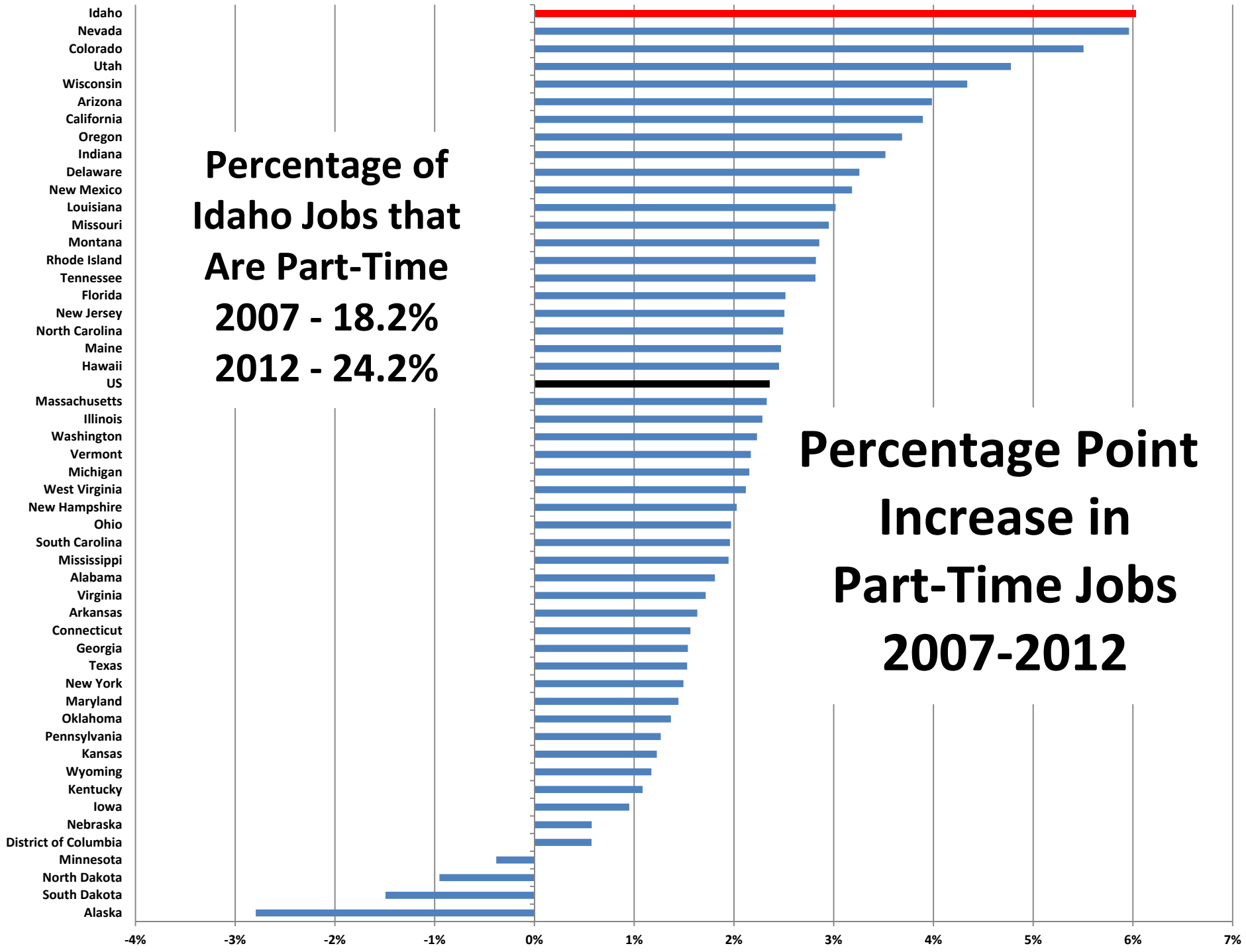
US 24.8%  
Idaho 21%



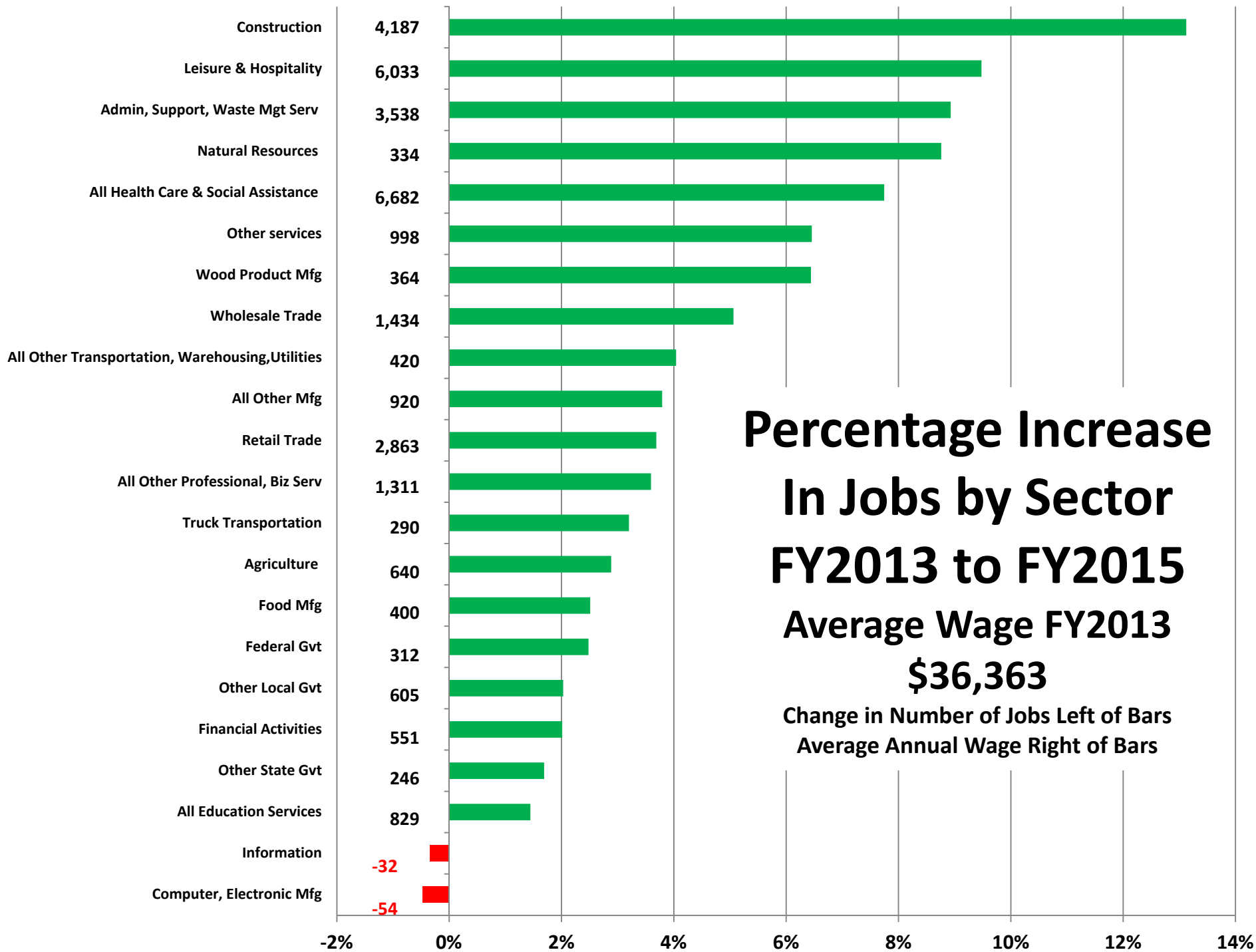
# Percentage of Population 20 to 29











**Percentage Increase  
In Jobs by Sector  
FY2013 to FY2015**

**Average Wage FY2013  
\$36,363**

Change in Number of Jobs Left of Bars  
Average Annual Wage Right of Bars