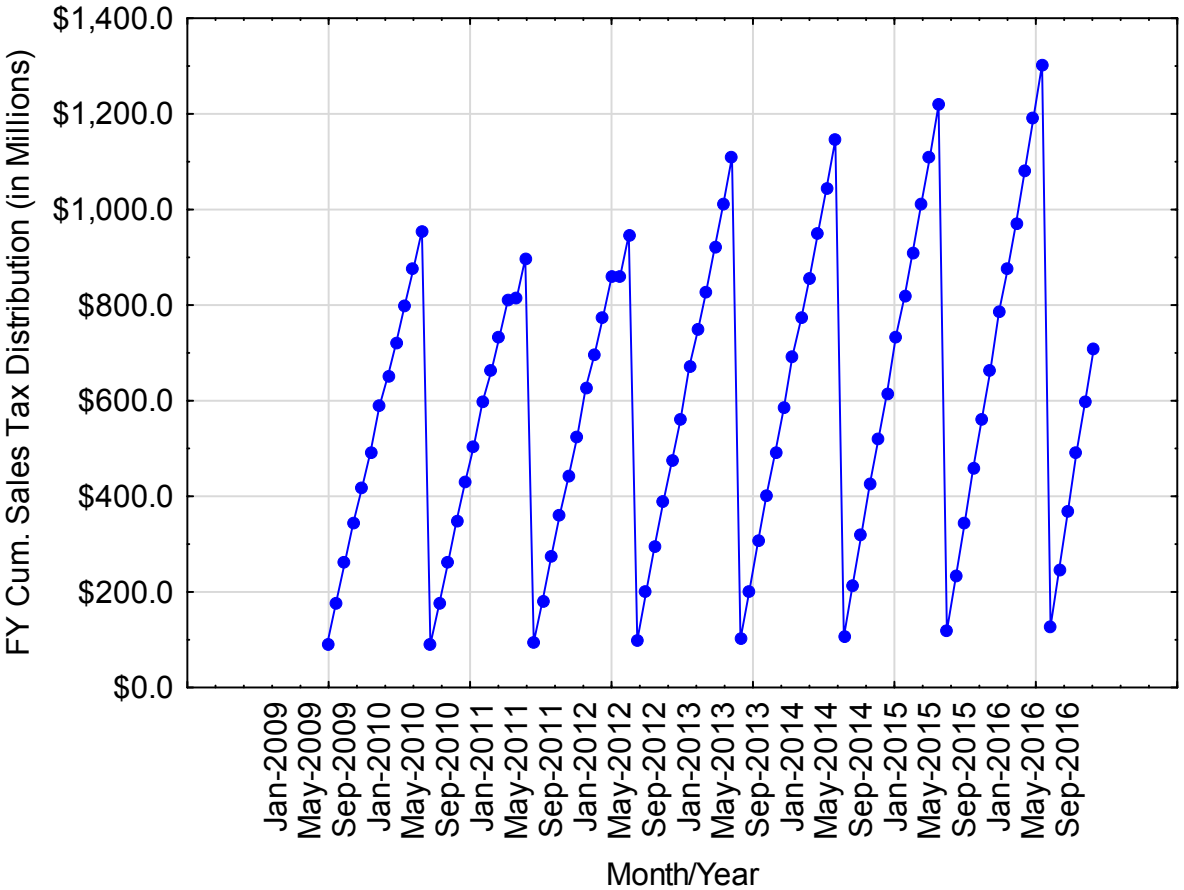


FY 2017 & 2018 Economic Outlook & Revenue Assessment

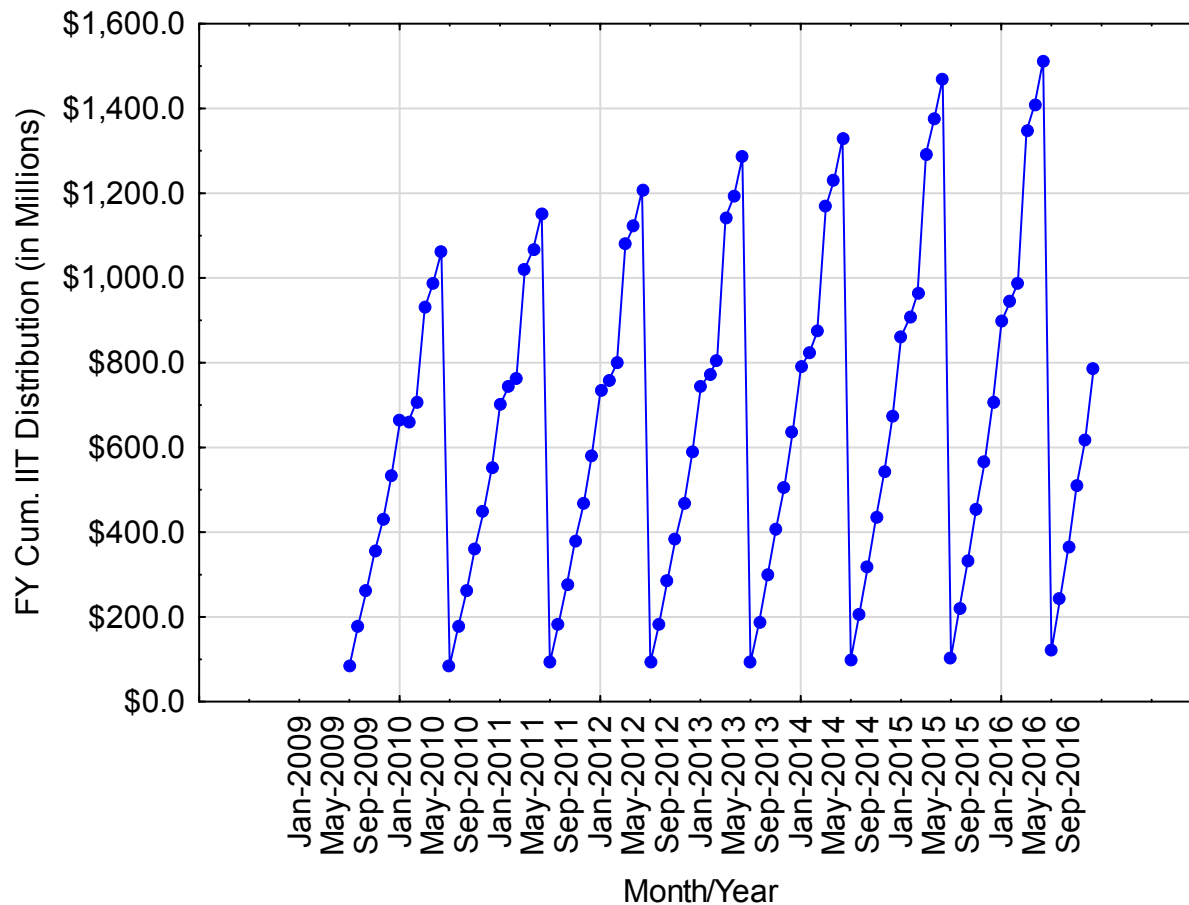
Ken A. Roberts, Chairman
Idaho State Tax Commission

Idaho State Tax Commission 2010 – 2016

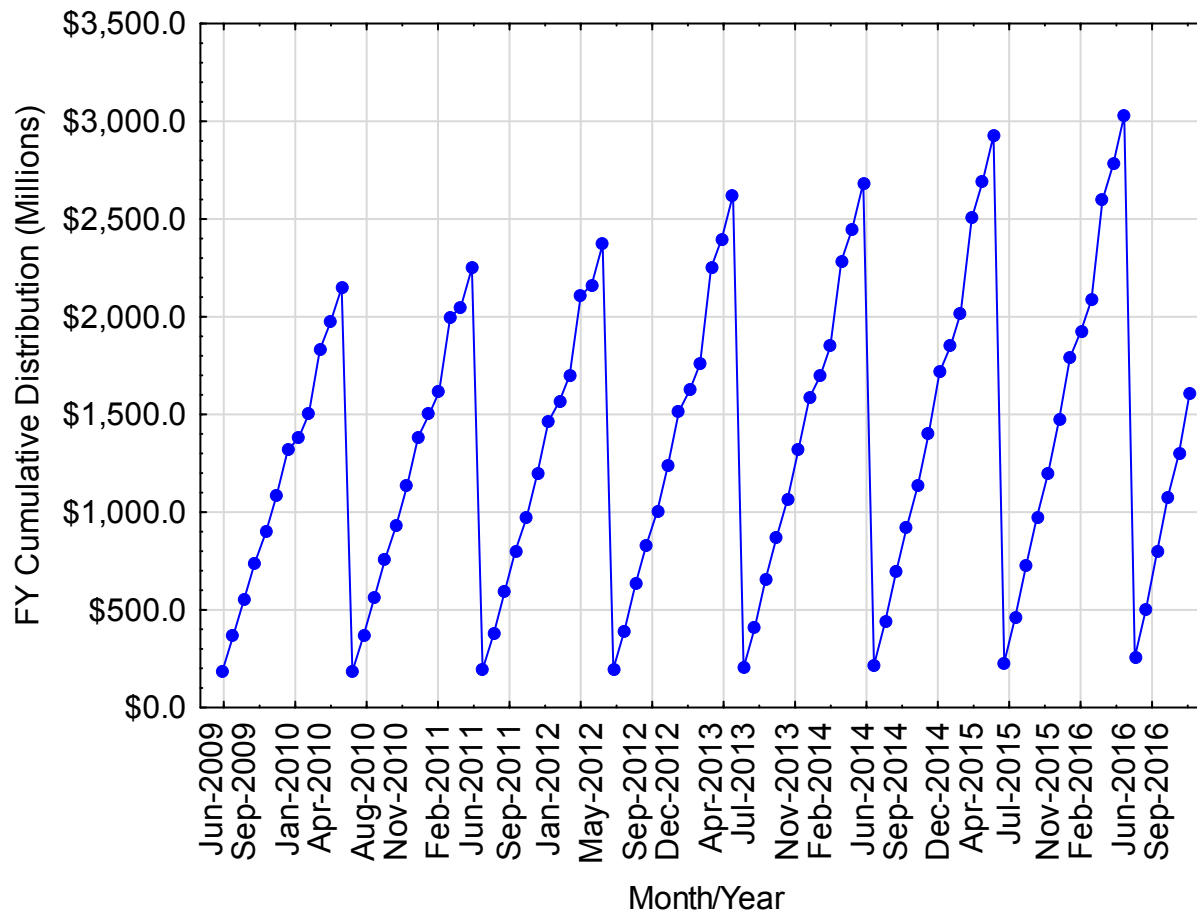
Historical Fiscal Year-to-Date Sales Tax Revenue Distributed to General Fund



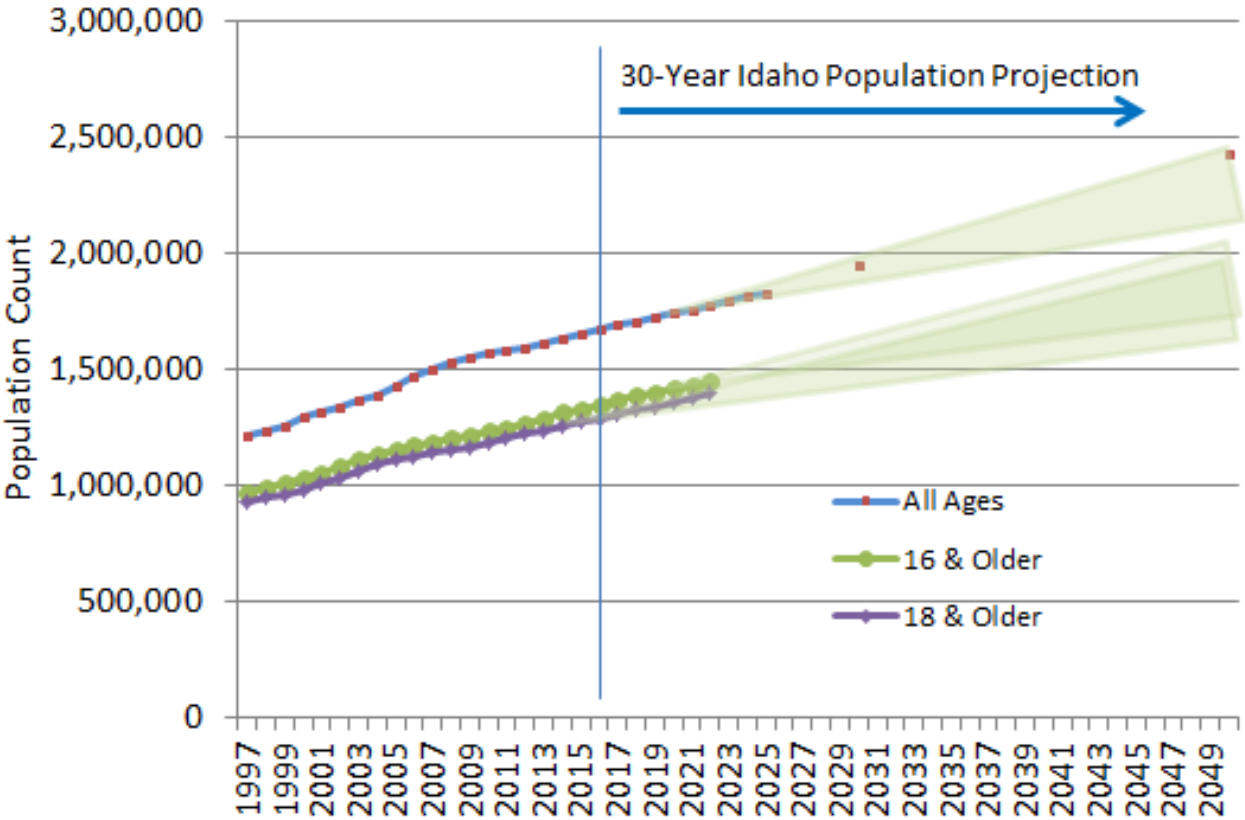
Idaho State Tax Commission 2010 – 2016 Historical Fiscal Year-to-Date Individual Income Tax Revenue Distributed to General Fund



Idaho State Tax Commission 2010 – 2016 Historical Fiscal Year-to-Date Revenue Collections Distributed to General Fund

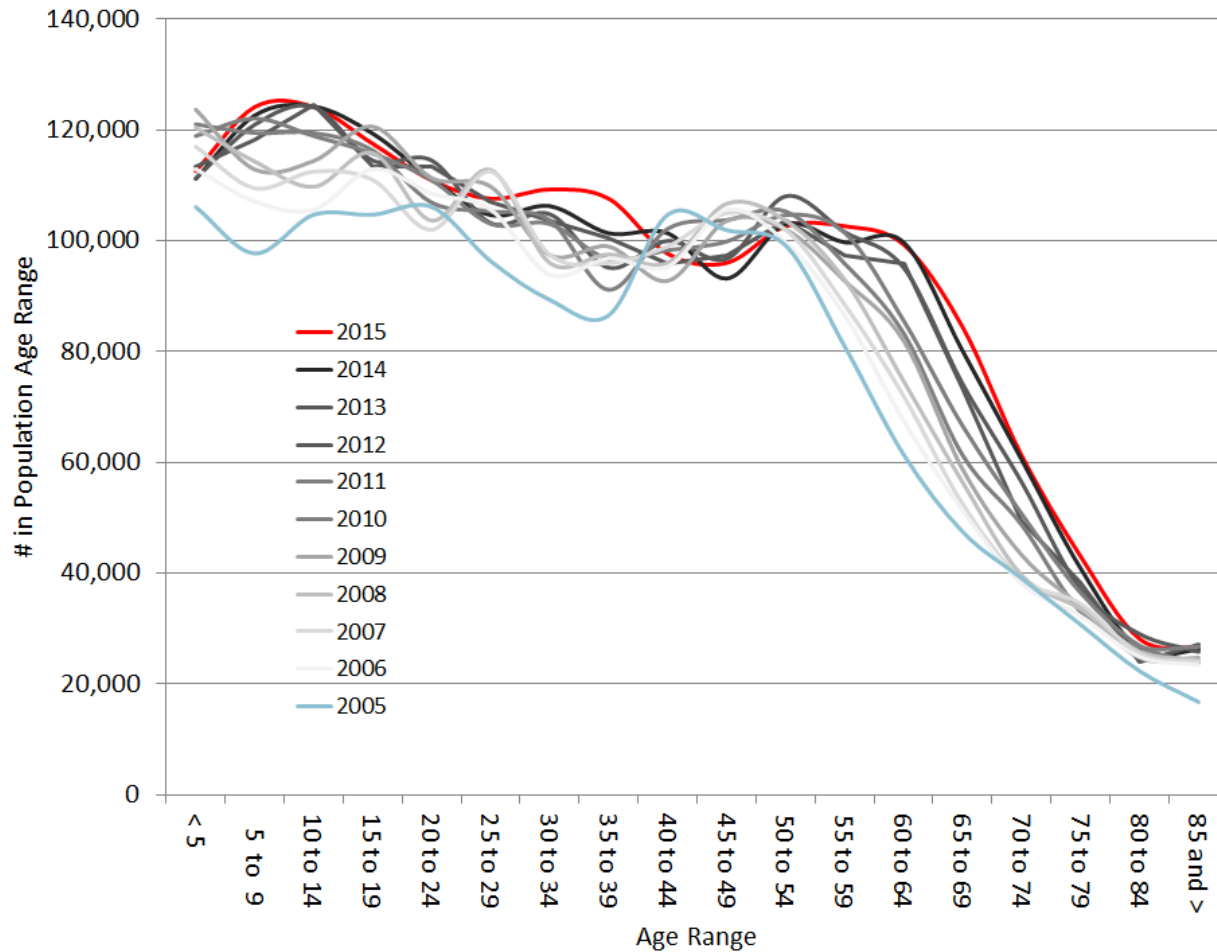


Idaho Taxpaying Population With Projections from 2016 Forward



Data Sources: U.S. Census Bureau; Weldon Cooper Center for Public Service, University of Virginia; and ProximityOne. Data points indicate historical and projected published data by the U.S. Census Bureau.

U.S. Census Bureau's Idaho Population Estimates by Age from 2005 through 2015



Idaho State Tax Commission General Fund Estimates for FY 2017 (in Millions)

Tax Type	FY 2016 Actual	FY 2017 Estimate	Difference	Percent Change
Individual Income Tax	\$1,513.2	\$1,619.1	\$105.9	7.00%
Corporate Income Tax	\$186.9	\$196.2	\$9.3	5.00%
Sales Tax	\$1,303.0	\$1,394.2	\$91.2	7.00%
Product Taxes				
Cigarette	\$7.9	\$9.9	\$2.0	25.32%
Tobacco Products	\$11.6	\$12.2	\$0.6	5.00%
Beer	\$1.9	\$2.0	\$0.0	2.00%
Wine	\$4.5	\$4.7	\$0.2	5.00%
Product Tax Total	\$25.9	\$28.8	\$2.8	10.97%
Other Taxes				
Kilowatt Hour	\$1.9	\$1.9	\$0.0	
Mine License	-\$0.2	\$0.2	\$0.4	
Total	\$1.6	\$2.1	\$0.5	29.76%
Idaho State Tax Commission (ISTC) Total	\$3,030.6	\$3,240.4	\$209.8	6.92%
General Funds Not Collected by the ISTC	\$153.1	\$134.9	-\$18.2	-11.86%
Grand Total	\$3,183.7	\$3,375.3	\$191.6	6.02%

NOTE: Some totals may not correctly add due to rounding of actual amounts.

Idaho State Tax Commission General Fund Estimates for FY 2018 (in Millions)

Tax Type	FY 2017 Estimate	FY 2018 Estimate	Difference	Percent Change
Individual Income Tax	\$1,619.1	\$1,732.4	\$113.3	7.00%
Corporate Income Tax	\$196.2	\$206.0	\$9.8	5.00%
Sales Tax	\$1,394.2	\$1,491.8	\$97.6	7.00%
Product Taxes				
Cigarette	\$9.9	\$9.9	\$0.0	0.00%
Tobacco Products	\$12.2	\$12.8	\$0.6	4.79%
Beer	\$2.0	\$2.0	\$0.0	0.63%
Wine	\$4.7	\$4.9	\$0.2	5.12%
Product Tax Total	\$28.8	\$29.6	\$0.8	2.91%
Other Taxes				
Kilowatt Hour	\$1.9	\$2.0	\$0.0	
Mine License	\$0.0	\$0.0	\$0.0	
Total	\$1.9	\$2.0	\$0.0	2.00%
Idaho State Tax Commission (ISTC) Total	\$3,240.3	\$3,461.9	\$221.6	6.84%
General Funds Not Collected by the ISTC	\$134.9	\$140.3	\$5.4	4.00%
Grand Total	\$3,375.1	\$3,602.2	\$227.1	6.73%

NOTE: Some totals may not correctly add due to rounding of actual amounts.