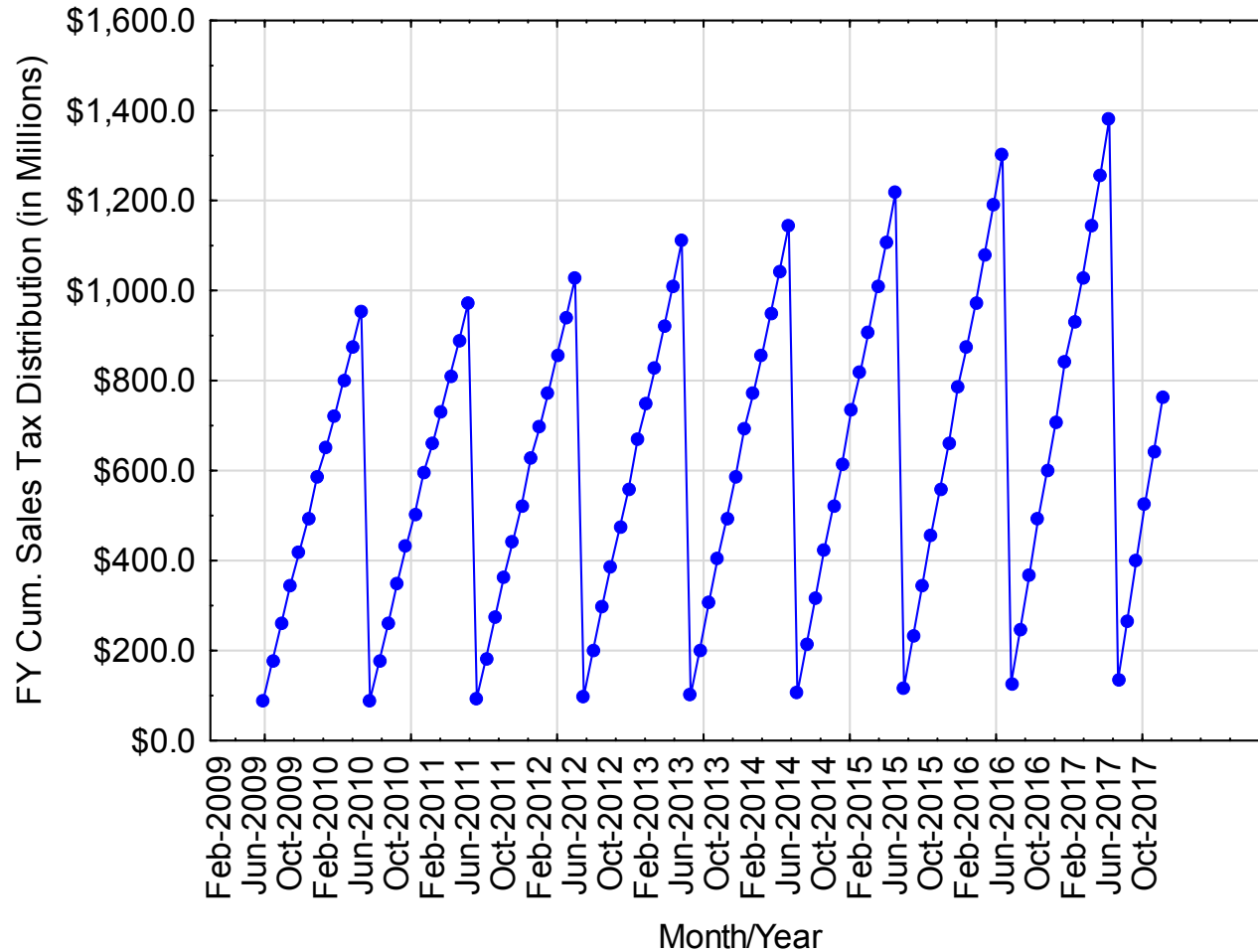


FY 2018 & 2019 Economic Outlook & Revenue Assessment

Ken A. Roberts, Chairman
Idaho State Tax Commission

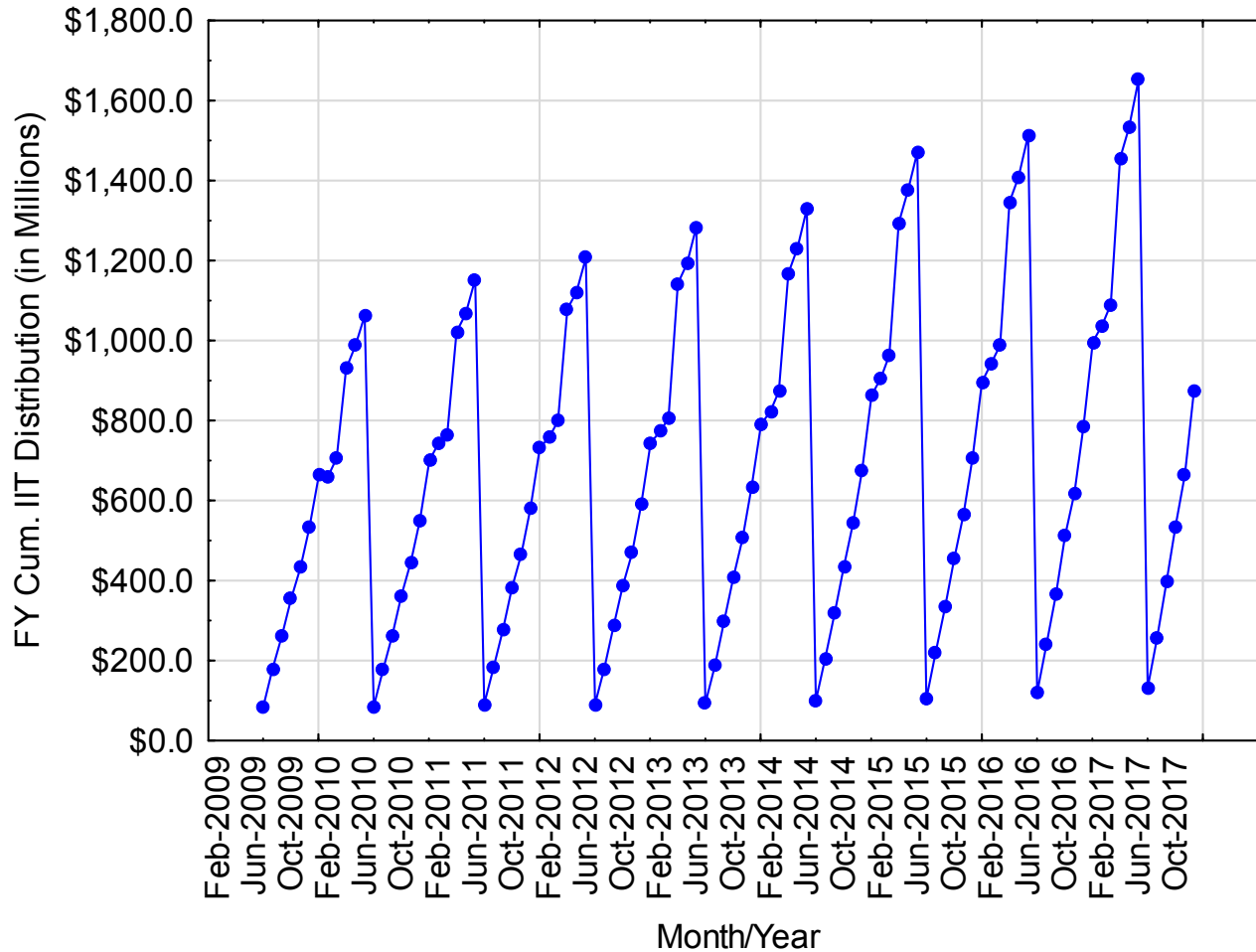
Idaho State Tax Commission 2010 – 2017

Historical Fiscal Year-to-Date **Sales Tax Revenue** Distributed to General Fund

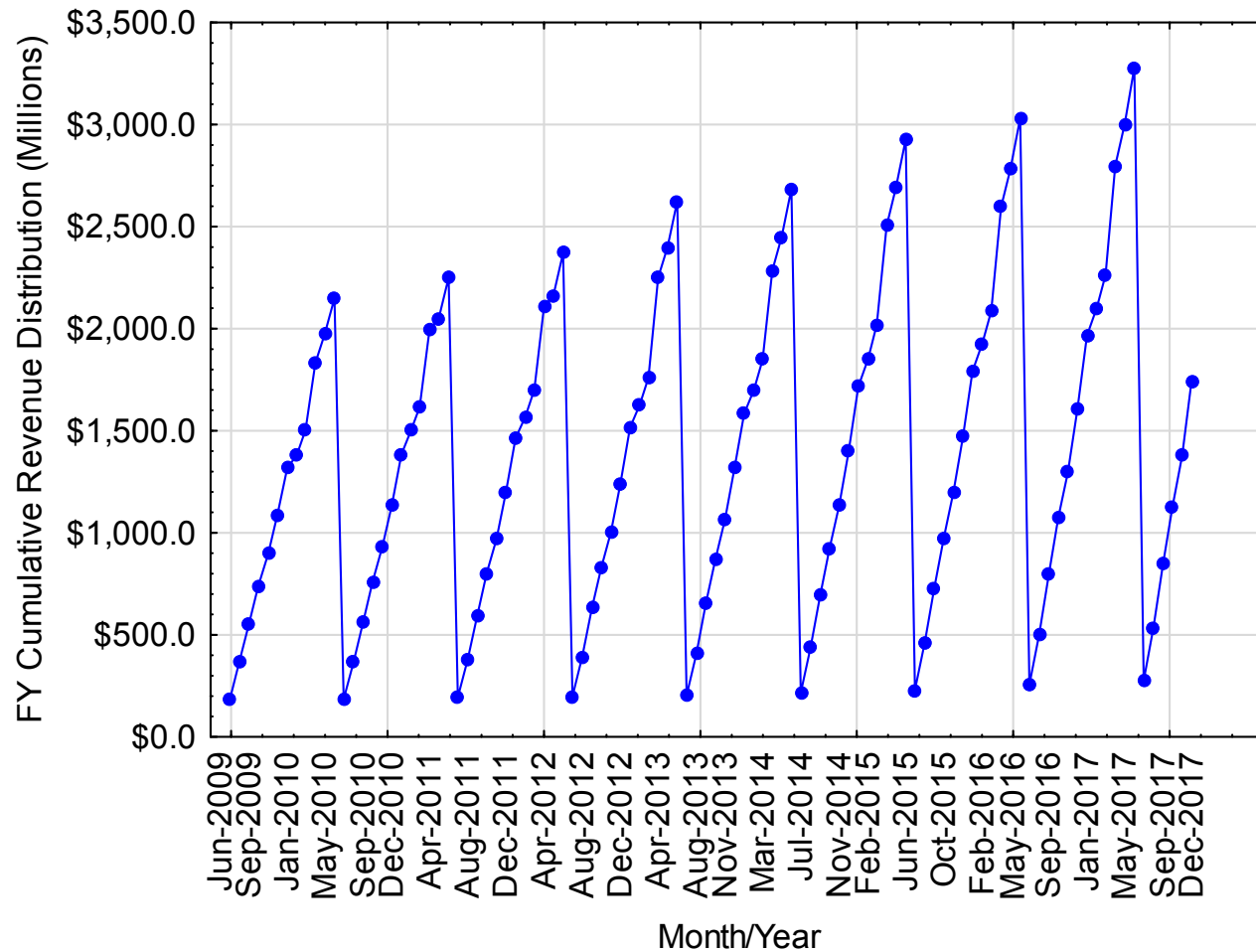


Idaho State Tax Commission 2010 – 2017

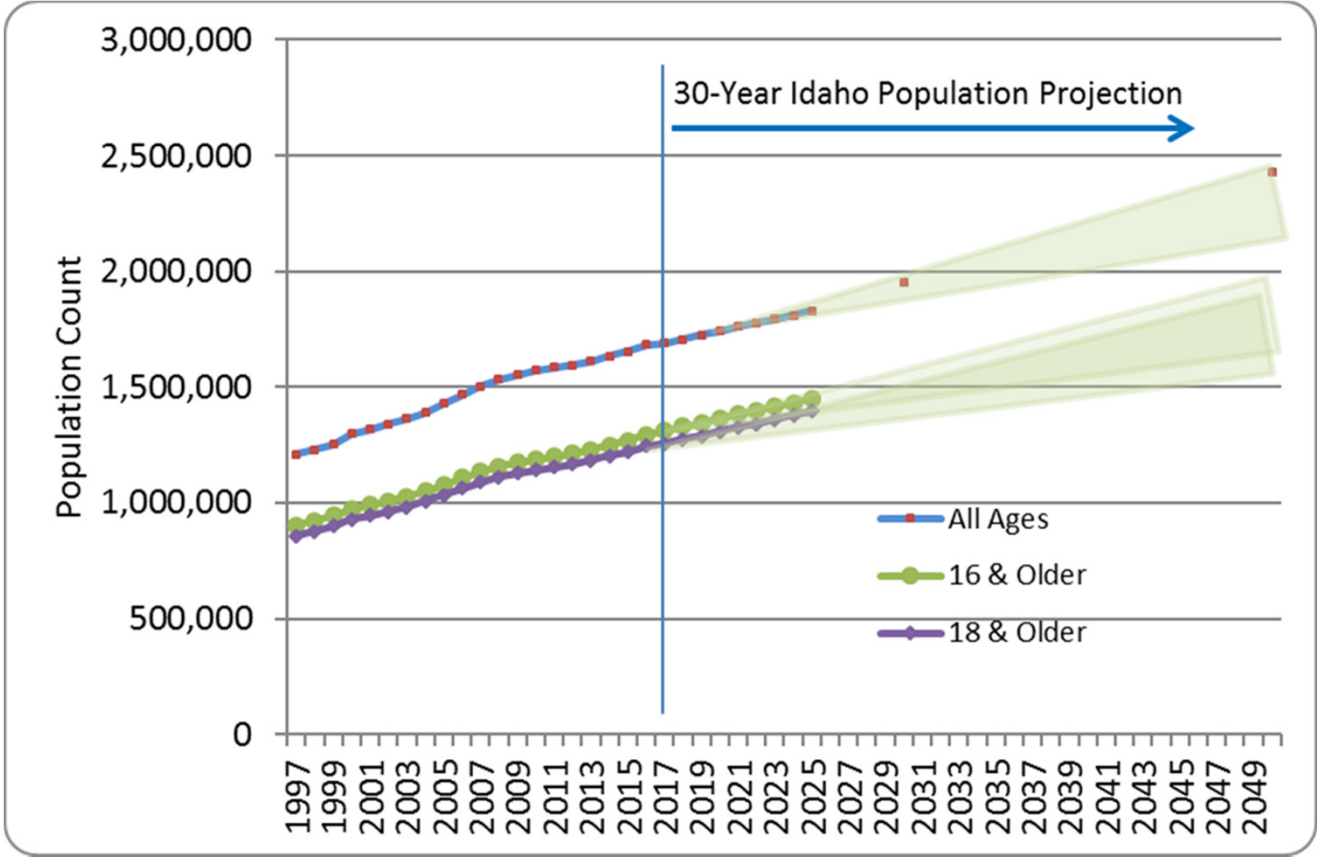
Historical Fiscal Year-to-Date **Individual Income Tax Revenue** Distributed to General Fund



Idaho State Tax Commission 2010 – 2017 Historical Fiscal Year-to-Date **Total Revenue** Distributed to General Fund

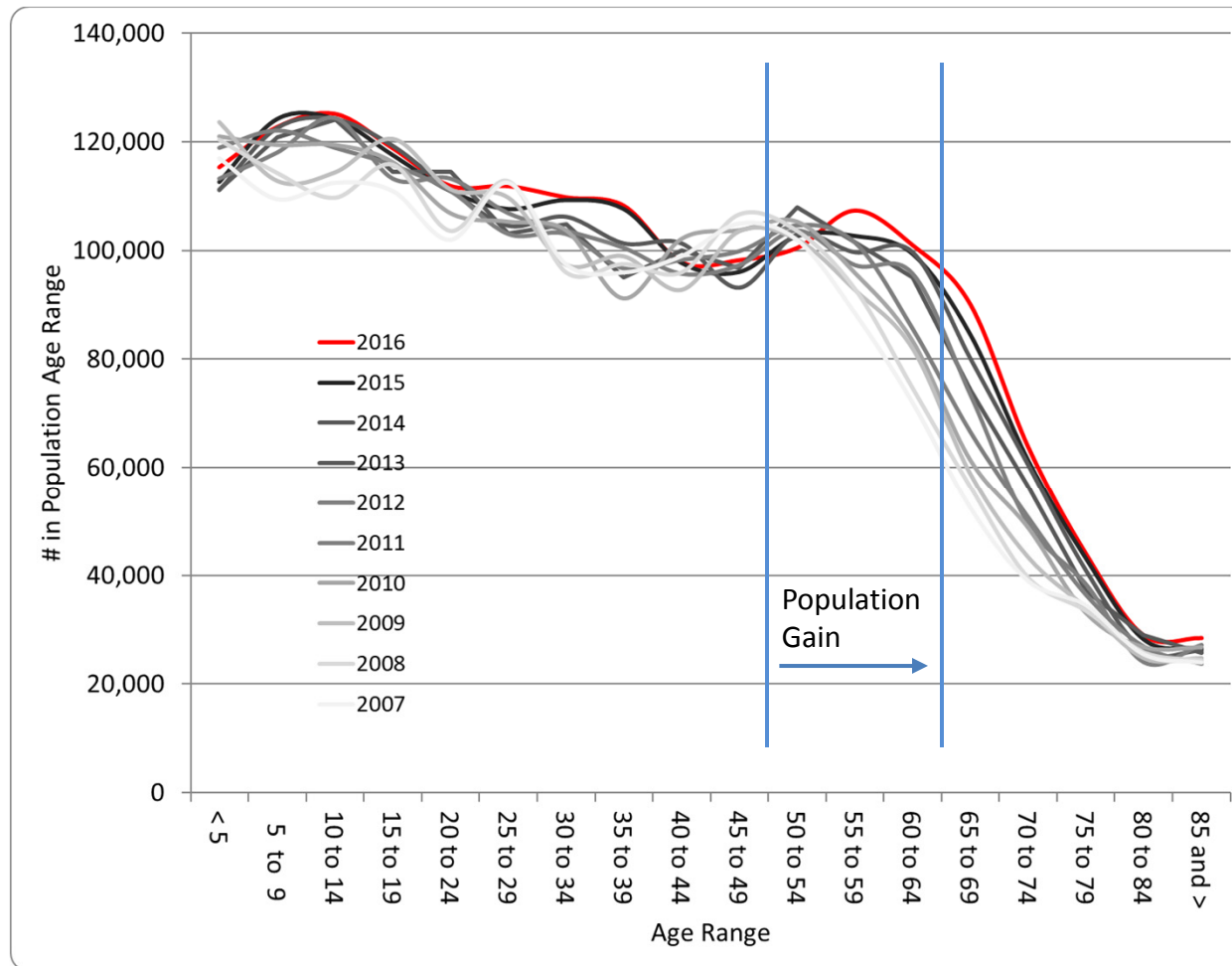


Idaho Taxpaying Population With Projections from 2017 Forward



Data Sources: U.S. Census Bureau; Weldon Cooper Center for Public Service, University of Virginia; and ProximityOne. Data points indicate historical and projected published data by the U.S. Census Bureau.

U.S. Census Bureau's Idaho Population Estimates by Age from 2007 through 2016



Idaho State Tax Commission General Fund Estimates for FY 2018 (in Millions)

Idaho State Tax Commission General Fund Estimate for Fiscal 2018 (M)				
Tax Type	FY 2017 Actual	FY 2018 Estimate	Difference	Percent Change
Individual Income Tax	\$1,651.2	\$1,804.2	\$153.0	9.27%
Corporate Income Tax	\$214.0	\$210.5	-\$3.5	-1.64%
Sales Tax	\$1,382.4	\$1,500.5	\$118.1	8.54%
Product Taxes				
Cigarette	\$10.0	\$9.8	-\$0.2	-2.00%
Tobacco Products	\$12.7	\$13.3	\$0.6	4.72%
Beer	\$1.9	\$2.0	\$0.0	5.26%
Wine	\$4.7	\$4.9	\$0.2	4.26%
Product Tax Total	\$29.3	\$30.0	\$0.7	2.39%
Other Taxes				
KWH	\$2.1	\$2.2	\$0.1	4.76%
Mine License	\$0.1	\$0.1	\$0.0	0.00%
Total	\$2.2	\$2.3	\$0.1	4.55%
ISTC Total	\$3,279.0	\$3,547.5	\$268.5	8.19%
General Funds Not Collected by the ISTC	\$169.4	\$154.1	-\$15.3	-9.03%
Grand Total	\$3,448.4	\$3,701.6	\$253.2	7.34%

NOTE: Some totals may not correctly add due to rounding of actual amounts.

Idaho State Tax Commission General Fund Estimates for FY 2019 (in Millions)

Idaho State Tax Commission General Fund Estimate for Fiscal 2019 (M)				
Tax Type	FY 2018 Estimate	FY 2019 Estimate	Difference	Percent Change
Individual Income Tax	\$1,804.2	\$1,916.3	\$112.1	6.21%
Corporate Income Tax	\$210.5	\$220.1	\$9.6	4.56%
Sales Tax	\$1,500.5	\$1,591.3	\$90.8	6.05%
Product Taxes				
Cigarette	\$9.8	\$9.7	-\$0.1	-1.02%
Tobacco Products	\$13.3	\$14.2	\$0.9	6.77%
Beer	\$2.0	\$1.9	-\$0.1	-0.05%
Wine	\$4.9	\$5.2	\$0.3	6.12%
Product Tax Total	\$30.0	\$31.0	\$1.0	3.33%
Other Taxes				
KWH	\$2.2	\$2.2	\$0.0	0.00%
Mine License	\$0.1	\$0.1	\$0.0	0.00%
Total	\$2.3	\$2.3	\$0.0	0.00%
ISTC Total	\$3,547.5	\$3,761.1	\$213.6	6.02%
General Funds Not Collected by the ISTC	\$154.1	\$154.1	\$0.0	0.00%
Grand Total	\$3,701.6	\$3,915.2	\$213.6	5.77%

NOTE: Some totals may not correctly add due to rounding of actual amounts.