

ATI Presentation to the Economic Outlook and Revenue Assessment Committee

Prepared By:

Miguel Legarreta, President

January 4th, 2019

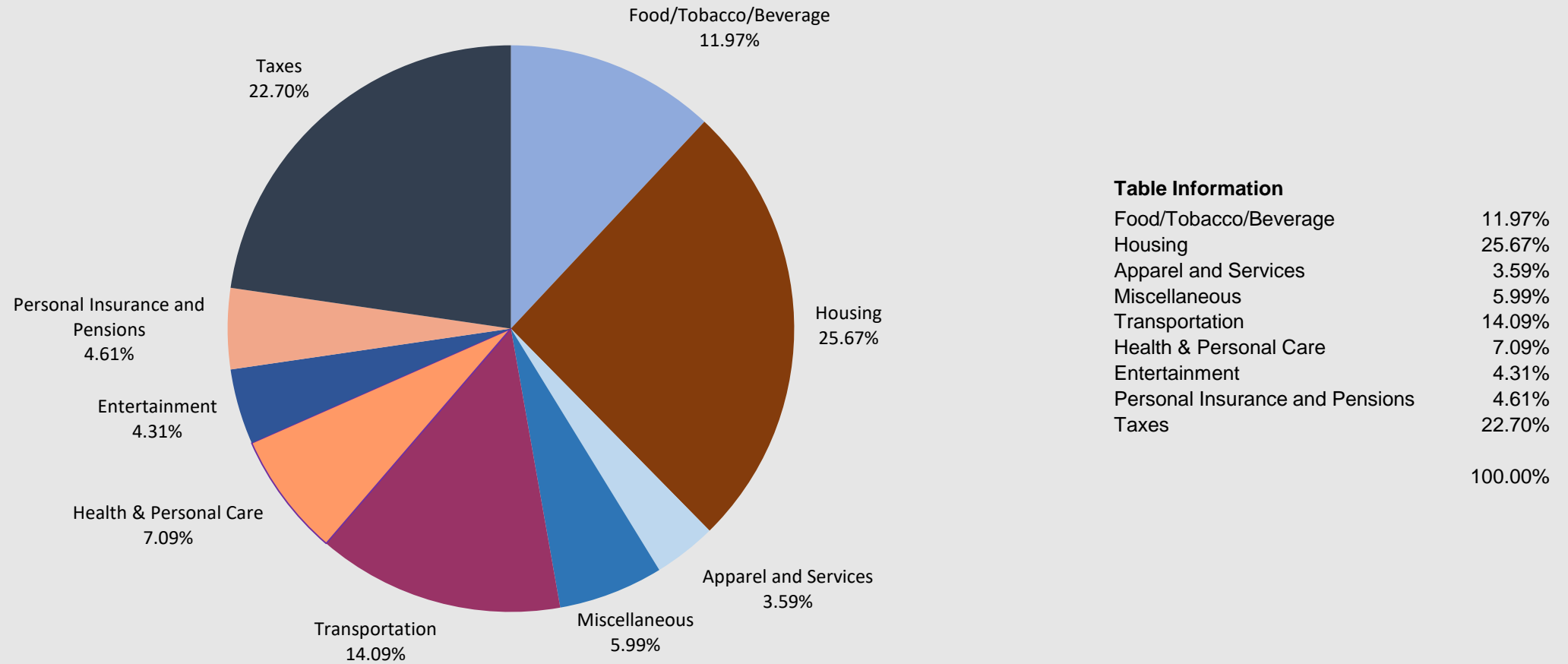


Associated Taxpayers of Idaho

- Founded in 1946 with many of our original members still prospering here in Idaho.
- Non-profit, non-partisan Association providing factual information to policy makers and taxpayers.
- ATI's work helps maintain a stable and reliable tax system for businesses and individual taxpayers.

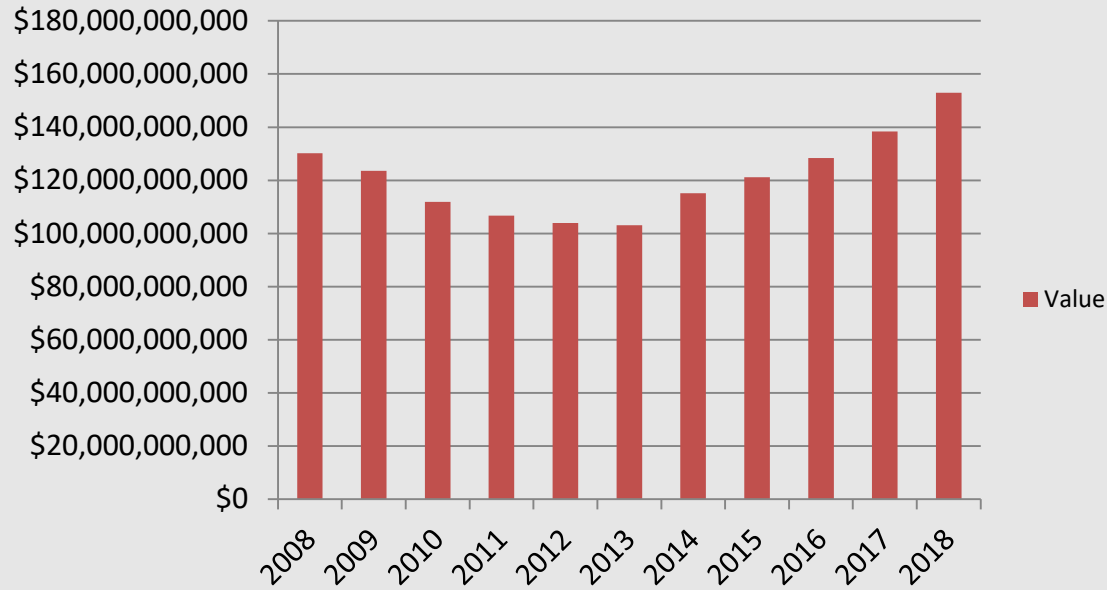
Idaho Spud Family – Expenditures

Percent of Total Household Income (\$87,202)

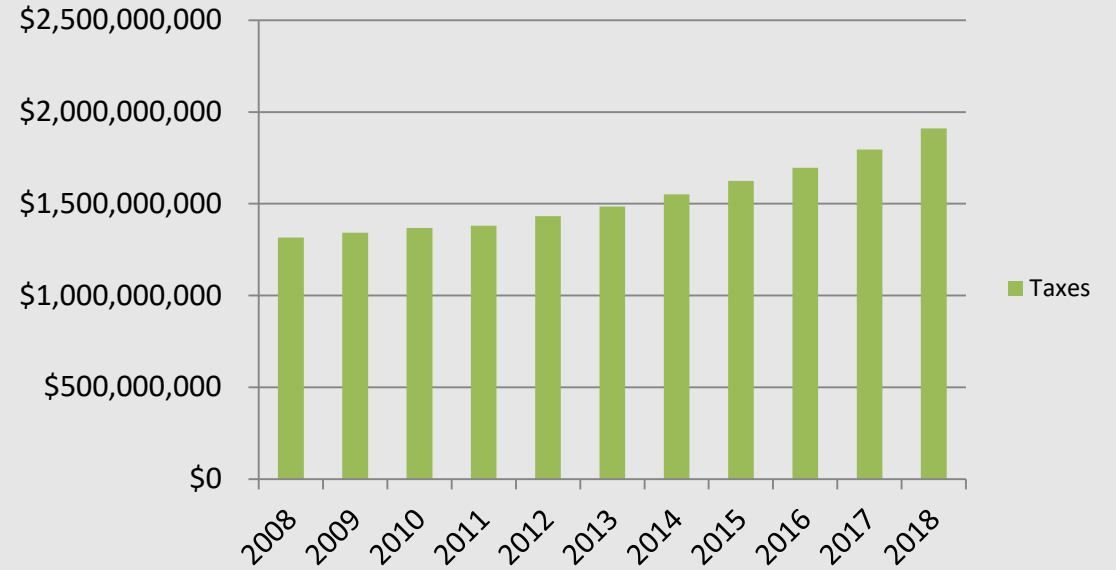


Property Taxes - Idaho

Value

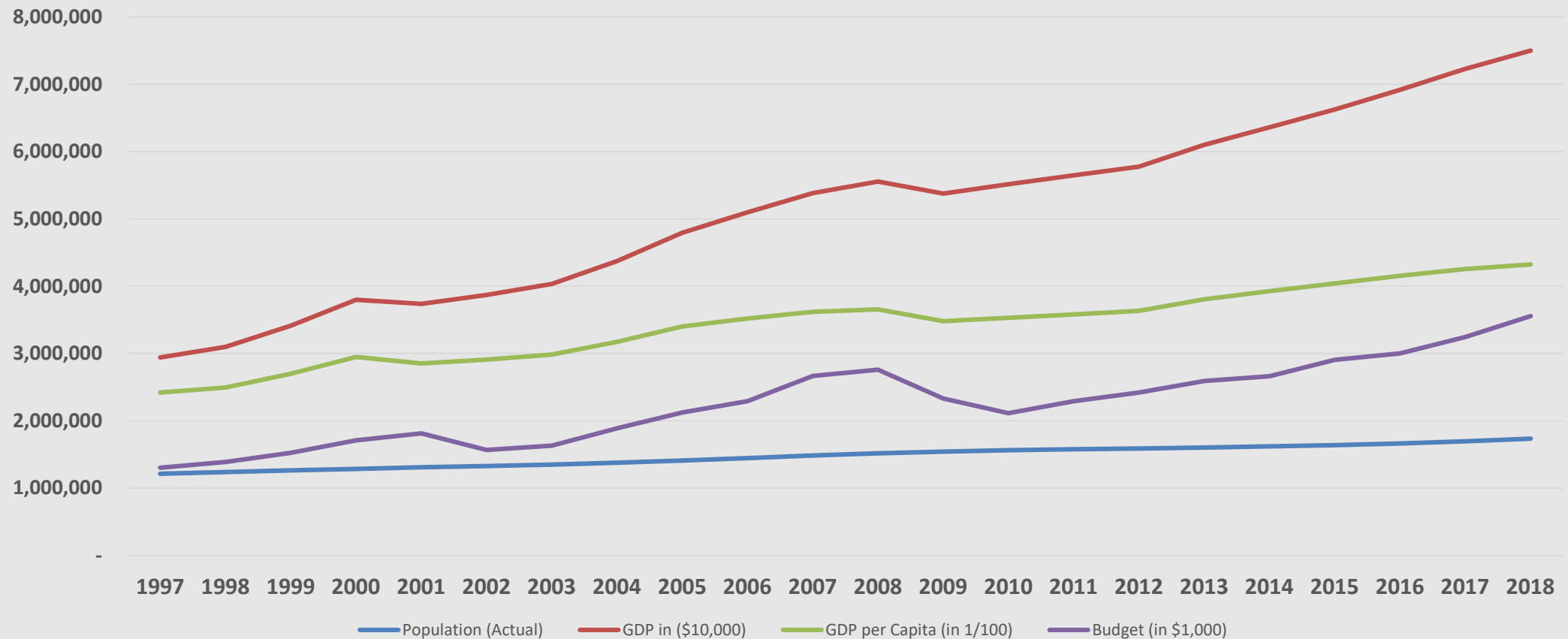


Taxes

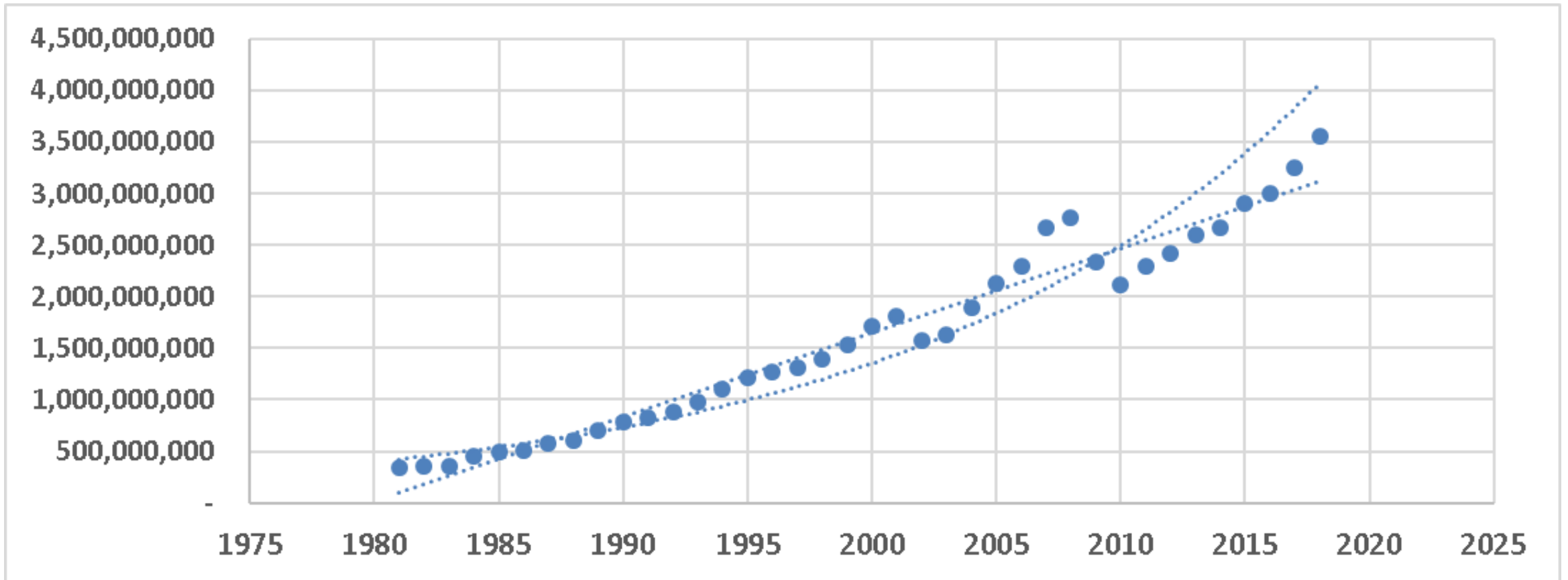


Idaho Economic Snapshot

Nominal \$\$



Major Revenue Categories Since 1980



Summary of General Revenue Fund Projections – Working Paper

January 2019 \$ Millions		Projected Revenue	
Tax Category	FY 2018 (Actual)	FY 2019 (Forecast)	FY 2020 (Forecast)
Individual Income Tax	\$ 1,828.3	\$ 1,820.0	\$ 1,890.0
	10.7%	-0.5%	3.8%
Corporate Income Tax	\$ 238.7	\$ 244.5	\$ 235.0
	11.5%	2.4%	-3.9%
Sales Tax	\$ 1,490.0	\$ 1,600.0	\$ 1,750.0
	7.8%	7.4%	9.4%
Product Taxes	\$ 58.3	\$ 61.0	\$ 65.0
	0.3%	4.6%	6.6%
Misc. Revenue	\$ 116.3	\$ 108.5	\$ 124.0
	-18.5%	-6.7%	14.3%
Total General Fund Revenues	\$ 3,731.6	\$ 3,834.0	\$ 4,064.0
Dollar Change over Previous Year	\$ 283.2	\$ 102.4	\$ 230.0
Percentage Change over Prior Year	8.2%	2.7%	6.0%



For Further Information or Questions:

Miguel Legarreta, President
Associated Taxpayers of Idaho - Founded 1946
802 W. Bannock, Suite 307
Boise, ID 83702
CE 208-850-8464 • PH 208-344-5581
miguel@ati-taxinfo.com • ati-taxinfo.com