

# State of Idaho Organizational Chart

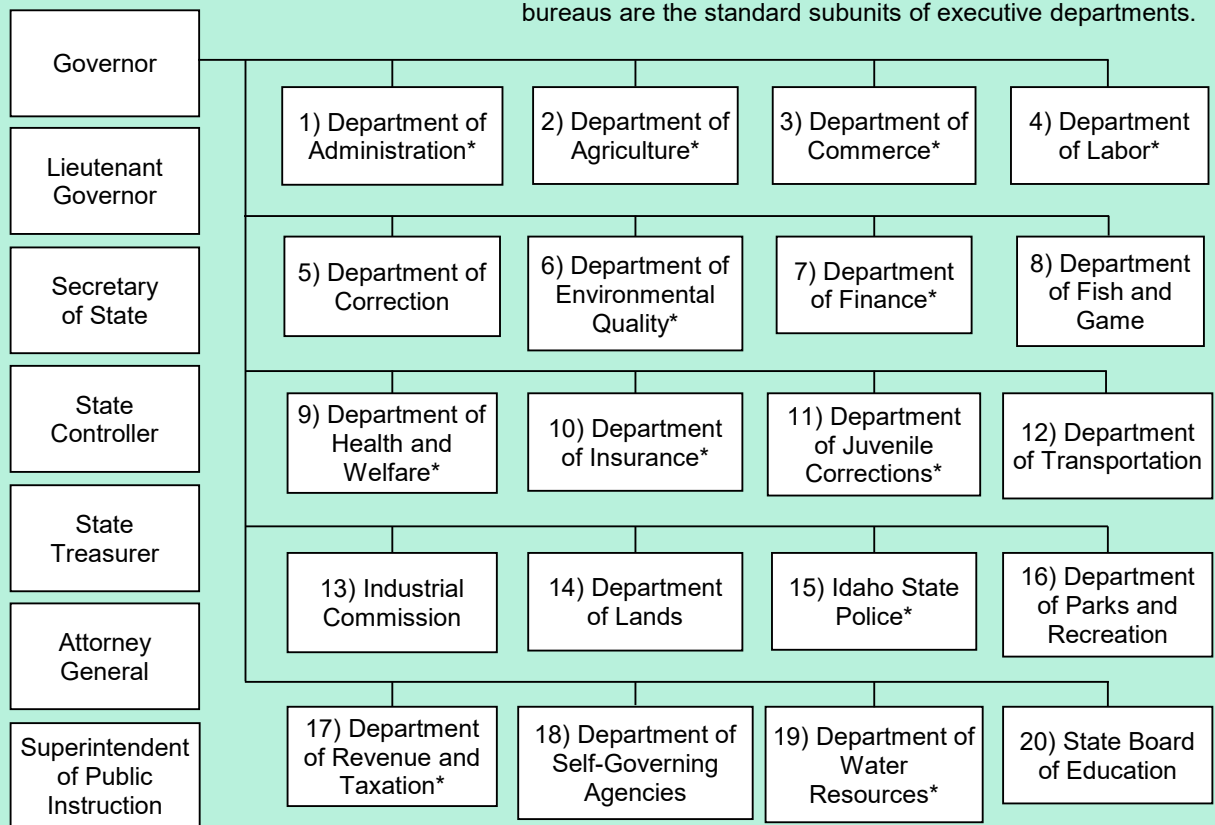
**Article II, Section 1, Idaho State Constitution:** The powers of the government of this state are divided into three distinct departments, the legislative, executive, and judicial; and no person or collection of persons charged with the exercise of powers properly belonging to one of these departments shall exercise any powers properly belonging to either of the others, except as in this constitution expressly directed or permitted.

## Article III. Legislative Department (Branch)



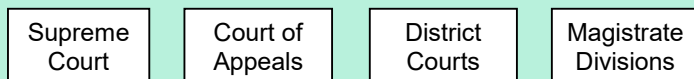
## Article IV. Executive Department (Branch)

Article IV, Section 20 limits the number of executive departments to 20. Section 67-2402, Idaho Code, lists the 20 executive departments of state government. Divisions and bureaus are the standard subunits of executive departments.



\*The Governor appoints the directors of those departments marked with an asterisk. Exceptions in the Department of Self-Governing Agencies include the gubernatorial appointments of the Appellate Public Defender and the administrator of the Division of Occupational and Professional Licenses.

## Article V. Judicial Department (Branch)



The lines of responsibility are complicated by nearly 200 boards, commissions, councils, committees, associations, and other structures authorized by the Idaho Constitution, statute, or executive order. See the Secretary of State's *Idaho Bluebook* for a full listing.