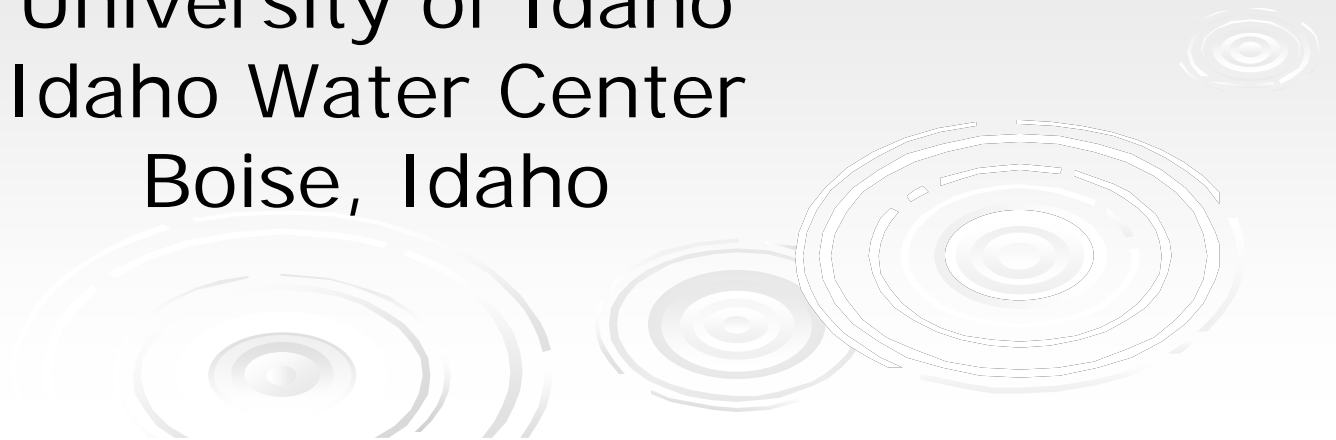


Integrated Water Resources Program

Water Resources Management for Developing Economies

John Tracy, Director of IWRRRI
University of Idaho
Idaho Water Center
Boise, Idaho



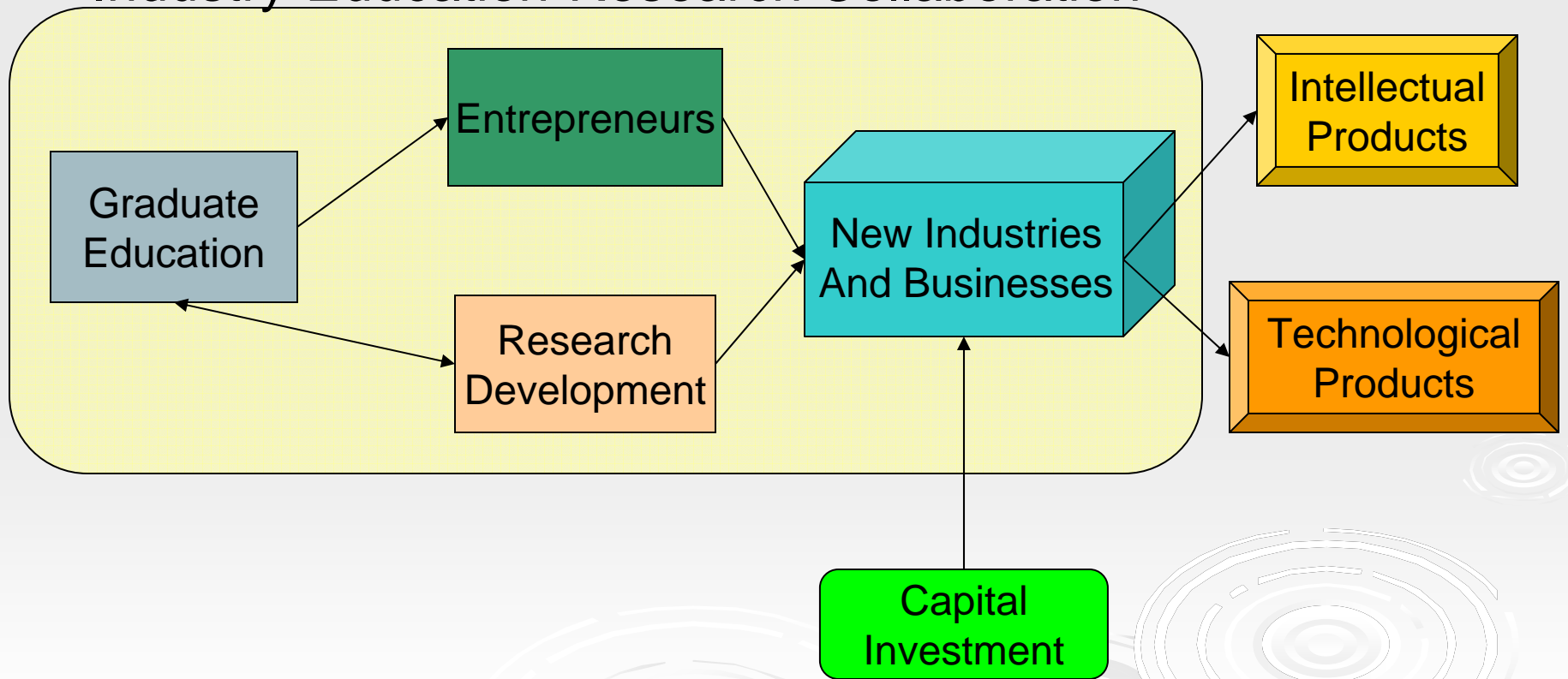
Vision

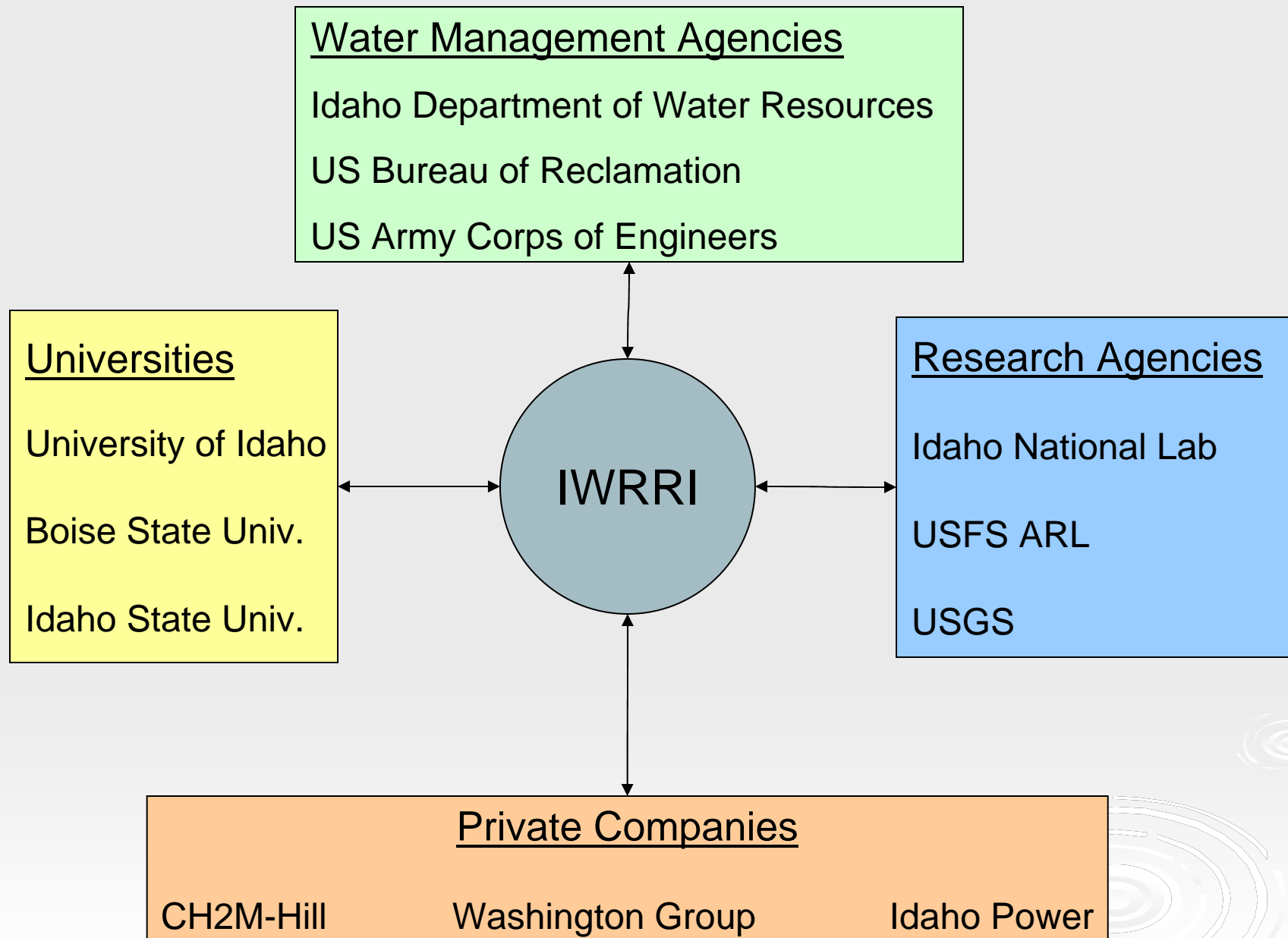
Make Idaho the intellectual hub for graduate education in water resources management and a world leader in providing water resource management solutions.



Leverage Educational and Research

Industry-Education-Research Collaboration





Assets – Universities

University of Idaho

- Water Resources/Hydrology Graduate Education in Colleges of Natural Resources, Science, Engineering, Agriculture and Law
- Ecohydraulics Research Center – Idaho Water Center
- Aquaculture Research Institute - Hagerman

Idaho State University

- Established program in River Ecology
- Emerging program in Water Resources Decision Support

Boise State University

- Established program in Public Policy
- Linkage to Andrus Center for Public Policy
- Emerging program in hydrologic sciences and biosensors

Idaho Water Resources Research Institute
NSF EPSCoR Water Resources Research Initiative

Assets – Research Organizations

Idaho National Laboratory

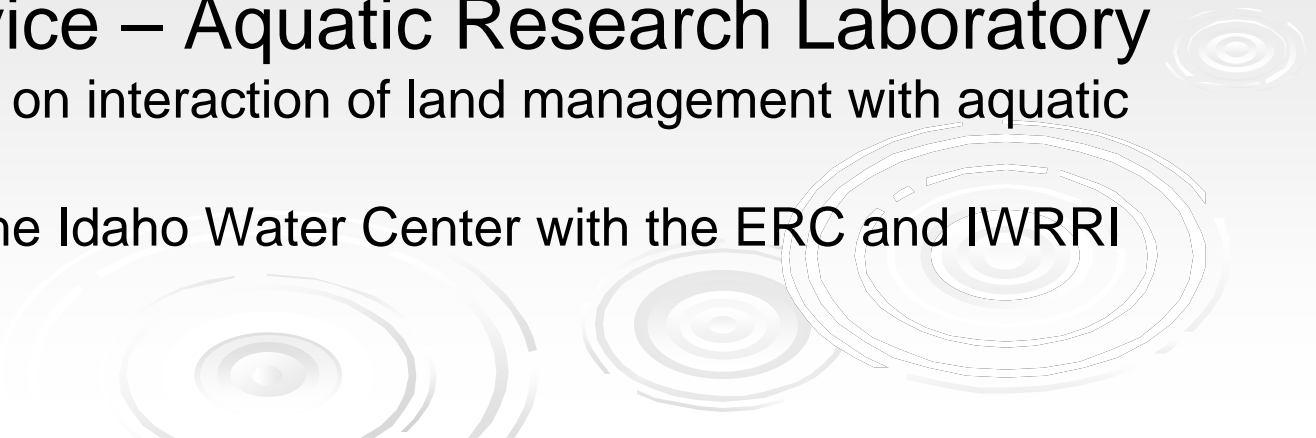
- Regional leader in Energy-Water Nexus Issues
- Extensive research and experimentation in groundwater flow, contaminant transport and mitigation

United States Geological Survey

- International leader in water monitoring, data archiving and real-time data delivery
- State Headquarters are in downtown Boise

US Forest Service – Aquatic Research Laboratory

- National leader on interaction of land management with aquatic habitats
- Co-located in the Idaho Water Center with the ERC and IWRRI



Assets – International Companies

Washington Group

- Extensive experience internationally in infrastructure development.
- Extensive experience in infrastructure development for environmental and water resources management.

CH2M-Hill

- National leader in municipal water resources infrastructure planning, management, design and operations.
- Expertise to develop and implement projects in a wide range of international settings.

Idaho Power

- National leader in hydropower production
- Expertise in working in international venues



Gaps

- Programs that embed entrepreneurship into the curricula.
- Mechanism to Integrate activities and efforts across university, agency and private company platforms.
- Mechanism to promote and reward faculty, researchers, scientists and engineers that actively pursue joint collaborations.

