

Tax Exemptions and Good Tax Policy: Perspectives on Individual Tax Policy

**by Judith Brown, Director
August 2, 2007**

presentation to the Tax Exemptions Interim Committee

Idaho Center on Budget and Tax Policy

**226 E. 1st St., Moscow 208-882-0492 (Moscow) 208-331-7028 (Boise)
a project of United Vision for Idaho**

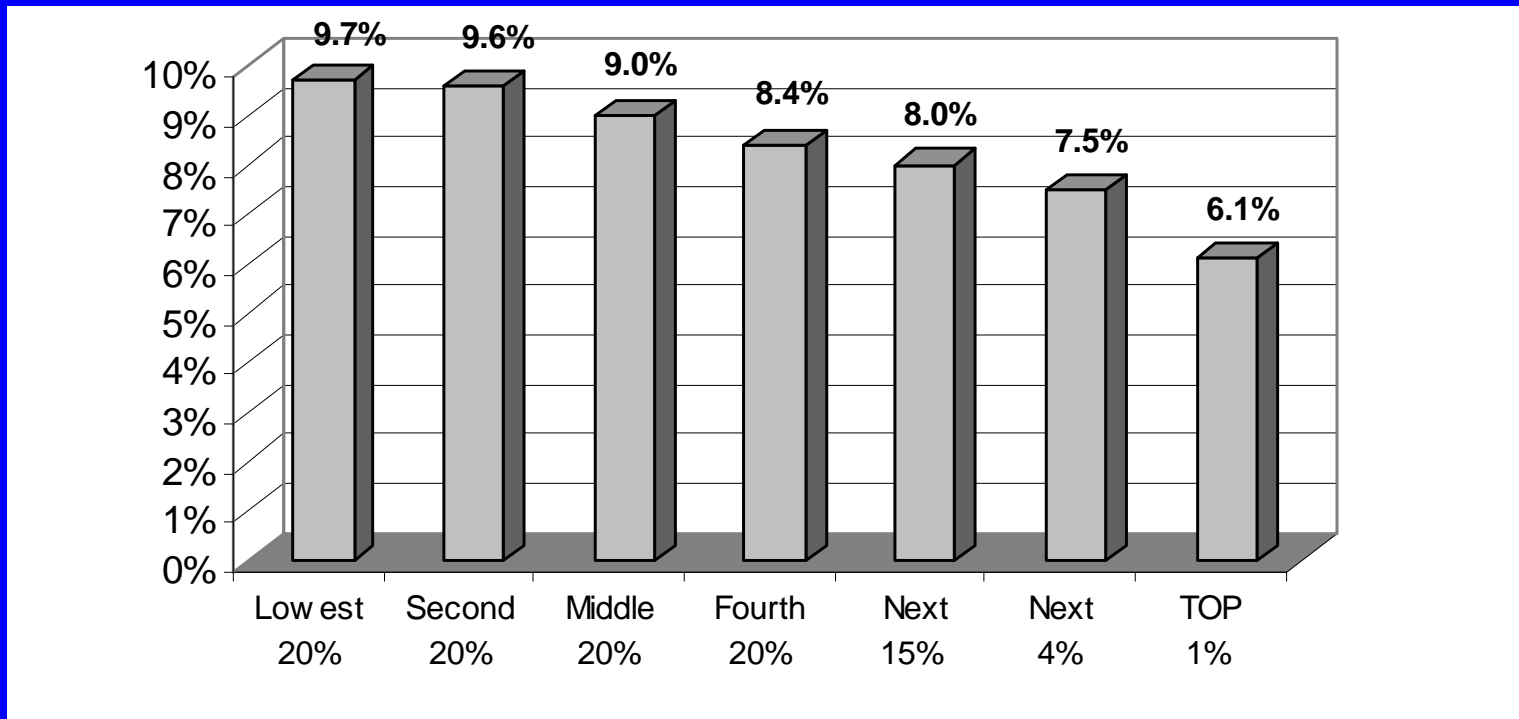
A tax expenditure (exemption, exclusion, credit, deduction) is a departure from the *uniform* application of the tax code.

Criteria for good tax policy/ Justifications for tax expenditures

- **Reliability – stability, certainty, sufficiency**
- **Equity – horizontal and vertical**
- **Compliance and administration**
- **Responsiveness to interstate and international competition**
- **Economic neutrality**
- **Accountability**

Idaho - State and Local Taxes in 2002

Shares of family income for non-elderly taxpayers



Source: Institute on Taxation and Economic Policy Microsimulation Model

Tax re-structuring should seek to make the overall system **more equitable.**

Income tax exemptions

Refundable credits

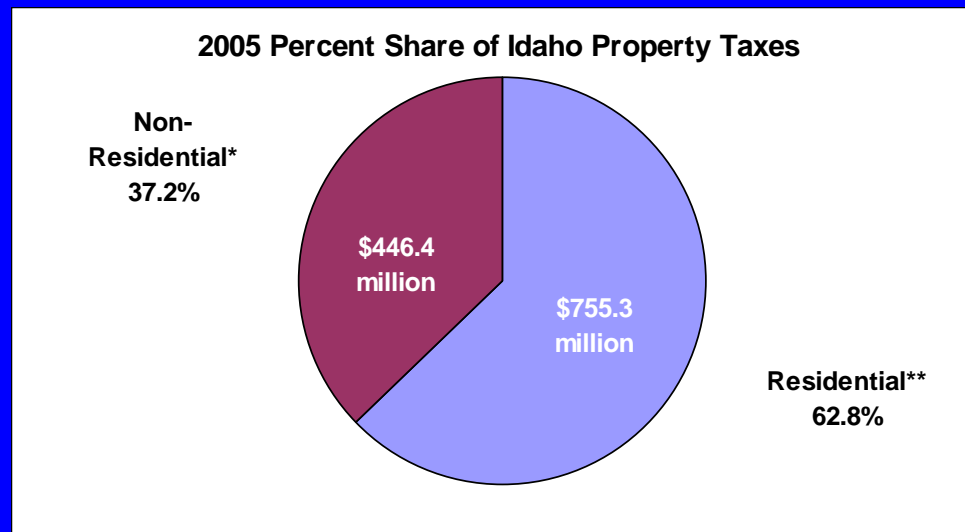
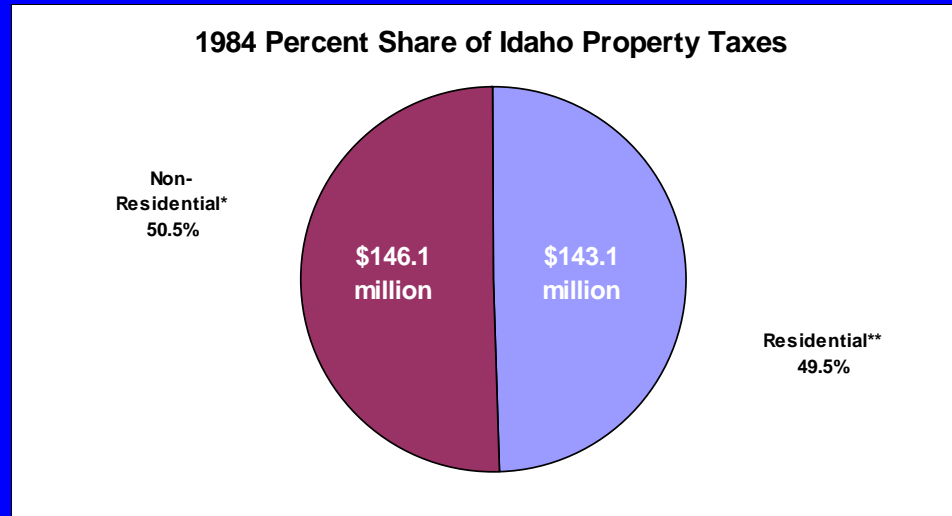
- a policy tool to improve equity
- based on the work of Milton Friedman
- also advantageous with respect to reliability, administration, neutrality
- 22 states plus D.C. have a state eitc
 - Most recent: North Carolina, Louisiana
- also refundable child tax credits, grocery credits
- “social engineering”?

Property tax exemptions

Stopping the shift to homeowners and renters

- **Idaho ranks 31 in property taxes as a share of income**
(US Census, 2004 State & Local Govt Finance data)
- **Problem lies in sharing of property tax burden between residential and non-residential property**

The SHIFT, 1984 to 2005

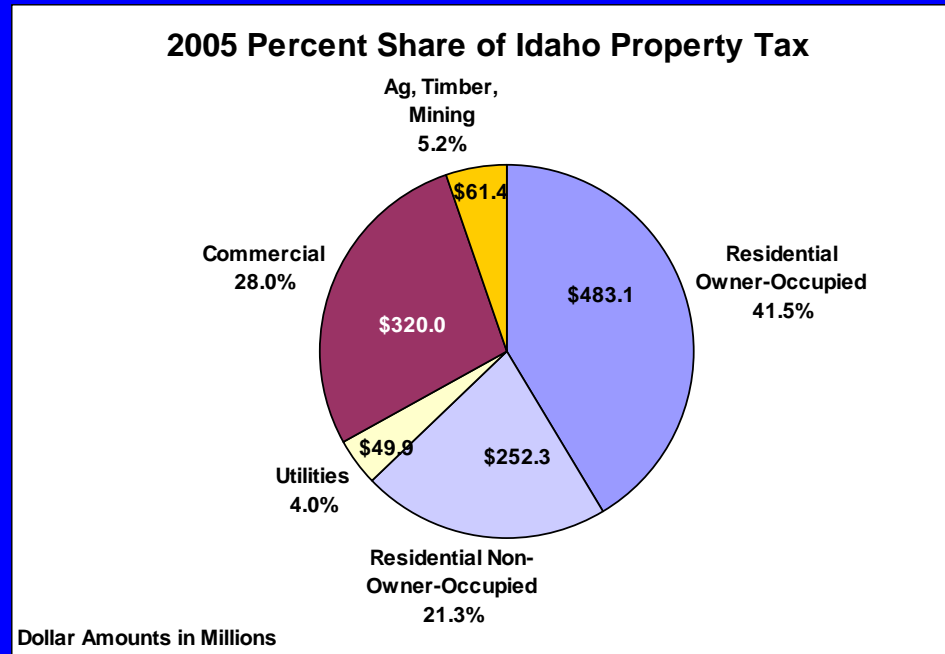


Source: Idaho Tax Commission

*Commercial, Utilities, Ag, Timber, Mining

**Owner-occupied and Non-owner-occupied

The SHIFT, cont'd.



Source: Idaho Tax Commission

The SHIFT onto Residential Owner-Occupied

2003 to 2005: \$51.5 million

2002 to 2005: \$89.0 million

2006 expansion of the Homeowner's Exemption

SHIFTED BACK \$47 million

Property tax exemptions, cont'd

Stopping the shift to homeowners and renters

- **Expand homeowner's exemption further**
(US Census, 2004 State & Local Govt Finance data)
- **Adopt a renter's credit**
- **Reform the personal property tax in a way that does not shift that tax burden onto residential property/families.**

Sales tax exemptions

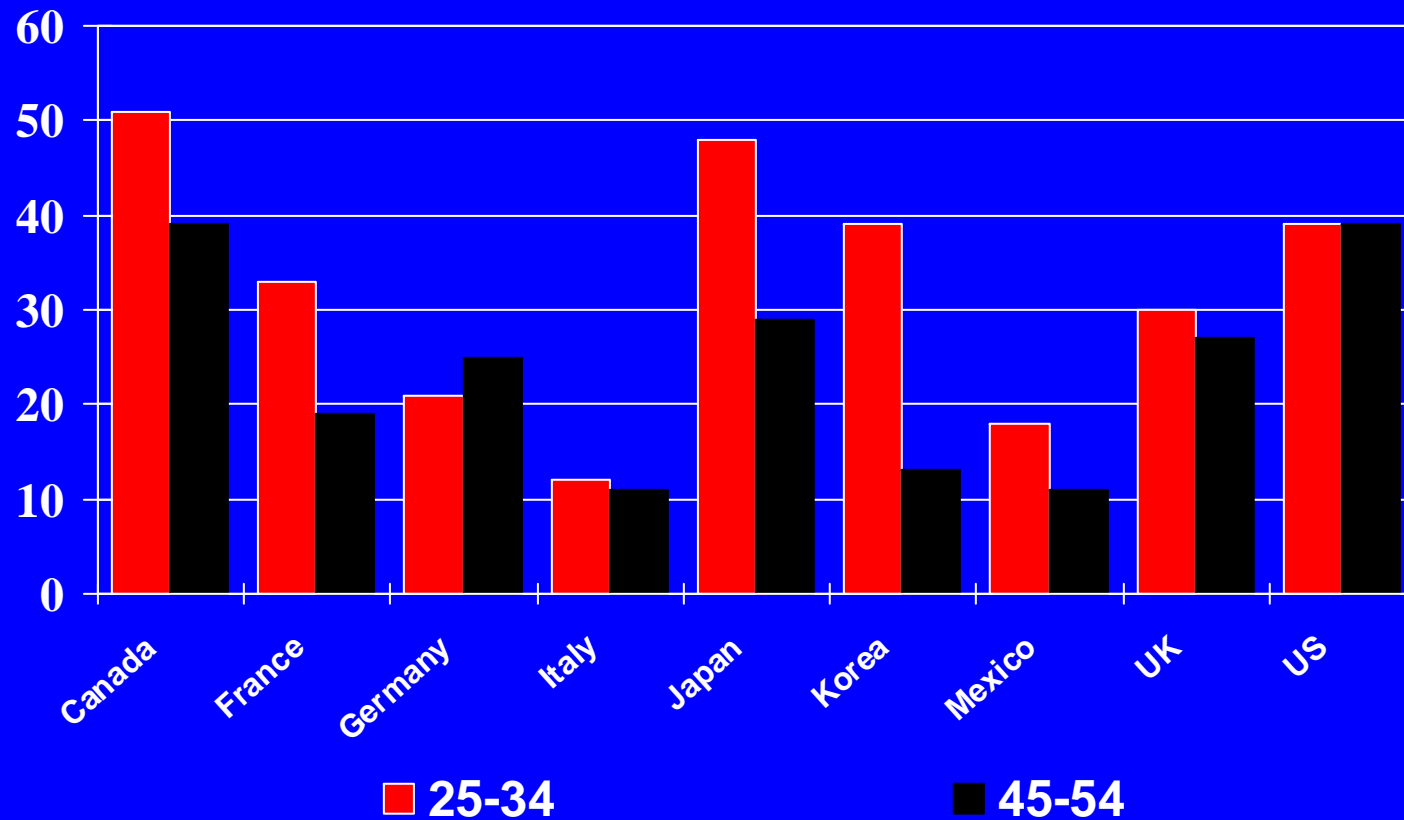
Broaden the base, lower the rate

- **Promotes reliability, neutrality**
- **not so much for equity considerations**
- **include internet sales in base?**
- **exempt food/groceries?**

Tax Expenditures v. Direct Spending

- **trend toward more tax expenditures**
- **raises issues in accountability**
- **sometimes direct spending is more effective**
- **example: increasing participation in higher ed**

Percentage of college graduates by age group



Source: Standard and Poors, OECD

Tax Expenditures v. Direct Spending, cont'd.

- **Idaho's college savings deduction v.**
- **needs-based financial aid and broader access to community colleges**

- **Idaho's development: reclamation projects, rural electrification, highways**

Thank you!