

Medical Education in Idaho: Inventory Highlights for Idaho State University

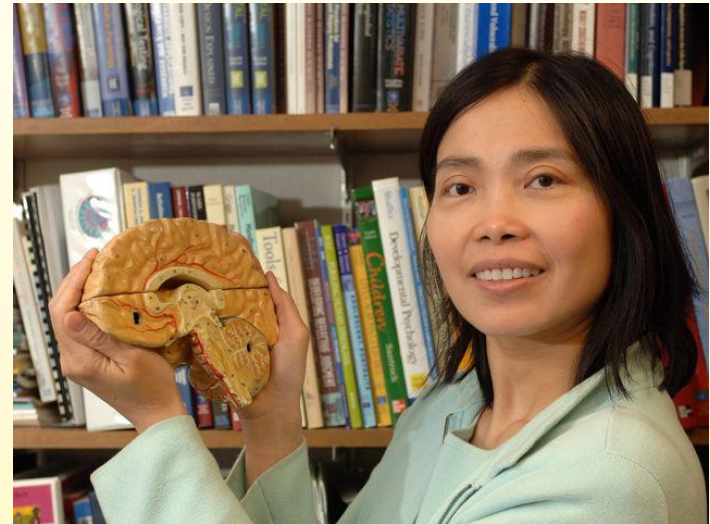
Medical Education Interim Committee
of the Idaho Legislature

Presentation by
President Arthur C. Vailas, Ph.D.
Idaho State University

Inventory Highlights: Idaho State University

Inventory: ISU Faculty

- 280 in departments of biological sciences, chemistry, pharmacy and health professions
 - 12 additional research faculty, non-state funded
- 34 with academic expertise in areas of first two years of medical education
- 21 have had faculty appointments or postdoctoral experience at MD schools



Inventory: Clinical Affiliate Faculty

- 176 clinical affiliate faculty (medical doctors)
- Affiliation agreements with 150 hospitals
- Affiliation agreements with more than 720 faculty and more than 1,370 sites
 - Statewide, nationally and internationally



Inventory: Administration

President Arthur C. Vailas, Ph.D.

- Extensive faculty and administrative experience in medical education at University of Iowa, UCLA, University of Wisconsin-Madison, and University of Houston

James A. Fletcher

- ISU Vice President for Finance and Administration

Joseph F. Steiner, Pharm. D.

- Dean, College of Pharmacy

Jonathan Cree, MD

- Director, Family Medicine Residency Program

Bill Woodhouse, MD

- Associate Director, Family Medicine Residency Program

Sandra Hoffman, MD

- Internal Medicine Coordinator, Family Practice Residency

Inventory: Health Science Facilities

- Pocatello
 - 16 buildings on campus, two near campus
- Idaho Falls
 - One building, shared with EITC
- Boise
 - Three buildings leased
 - ISU-Boise Center, IAGD Residency, Boise UAMC (pharmacy faculty)
- Meridian
 - One building, under remodel; will house all Treasure Valley programs

Inventory: Distance Learning Network

- Broadcast nearly 400 hours of class per week
- 29 video conferencing configurations, ranging from 8-200 students
 - Pocatello - 13 classrooms
 - Boise - 5 classrooms
 - Idaho Falls – 8 classrooms
 - Twin Falls – 2 classrooms
 - Coeur d'Alene – 1 classroom (shared with University of Idaho)



Inventory: Health Program Degrees

Kasiska College of Health Professions

- Audiology, AuD
- Counselor Education and Counseling, PhD
- Counseling, EdS
- Master of Counseling
 - Marital, Couple & Family Counseling
 - Mental Health Counseling
 - School Counseling
 - Student Affairs Counseling
- Deaf Education, MS
- Dental Hygiene, BS
- Dental Hygiene, MS
- Dentistry
 - Idaho Advanced General Dentistry
 - Idaho Dental Education Program
- Dietetics, BS
 - Dietetic Internship
- Educational Interpreting, BS
 - Sign Language Studies, AS
- Health Care Administration (HCA), BS
- Health Education, BA, BS, MHE
 - Addiction Studies
 - Community/Worksite
 - School Health Medicine
- Family Practice Residency

Inventory: Health Program Degrees

School of Nursing

- BSN/BSN – Fast Track
- Master of Science in Nursing
 - Clinical Nurse Leader Option
 - Clinical Nurse Specialist Option
 - Family Nurse Practitioner Option
 - Nursing Education Option
 - Nursing Leadership Option
- Occupational Therapy,

MOT

- Physical Therapy, DPT
- Physician Assistant Studies, MPAS
- Public Health, MPH
- Radiographic Science, AAS, BS
- Speech Language Pathology, MS
- Speech Pathology & Audiology, BS
- Preprofessional Speech Pathology & Audiology, BS

College of Pharmacy

- Professional Pharmacy
 - Doctor of Pharmacy, PharmD
- Graduate: MS, PhD
- Dual Degrees
 - PharmD/MBA
 - PharmD/MS
 - PharmD/PhD
- Minor in Pharmaceutical Sciences

Inventory: Health Program Degrees

College of Arts & Sciences

- Clinical Psychology, PhD
- Clinical Laboratory Science, BS, MS
- Health Physics, AS, BS, MS
- Social Work, AA, BA

College of Technology

- Dental Laboratory Technology, AAS
- Emergency Medical Technician, EMT-B
- Health Information

Technology, AAS

- Massage Therapy, AAS, TC
- Medical Assisting, AAS
- Medical Informatics, AAS
- Medical Transcription, PSTC
- Nursing, AS, ADRN
- Nursing Assistant
- Paramedic, ATC, AS
- Physical Therapist Assistant, AAS
- Practical Nursing, ADTC

➤ Respiratory Therapy, AS

College of Business

- MBA, Health Care Administration Emphasis
- Health Care Information Systems, BBA
- PharmD/MBA

Inventory: Residencies

Family Medicine	Dentistry	Pharmacy
MD and DO: 3 years	DDS: 1 year	PharmD: 1 or 2 years (8 total residencies)
65 Graduates	43 Graduates	116 Graduates
Started in 1992; full GME accreditation.	Started in 2000, expanded to Boise in 2005; Accreditation with ADA, Council on Dental Accreditation in 2001. Expansion site is pending.	Started in 1992, full American Society of Health-Systems Pharmacists accreditation.

Medical Residencies: Idaho Sites for Graduate Practice

○ Family Medicine

Aberdeen
Blackfoot
Boise
Bonners Ferry
Burley
Caldwell
Cascade
Emmett
Lewiston
Meridian
McCammon
Moscow
Pocatello
Rexburg
Rupert

● Dentistry

Boise
Caldwell
Council
Driggs
Grangeville
Idaho City
Idaho Falls
Meridian
Moscow
Pocatello
Post Falls
Salmon
Sugar City

○ Pharmacy

Blackfoot
Boise
Coeur d'Alene
Idaho Falls
Pocatello
St. Maries



Inventory: ISU Clinics

- Audiology
- Balance
- Counseling (2)
- Dental Hygiene
- Dentistry (2)
- Family Medicine
- Occupational Therapy
- Physical Therapy
- Psychology
- Senior Health
- Speech and Language (2)
- Wellness

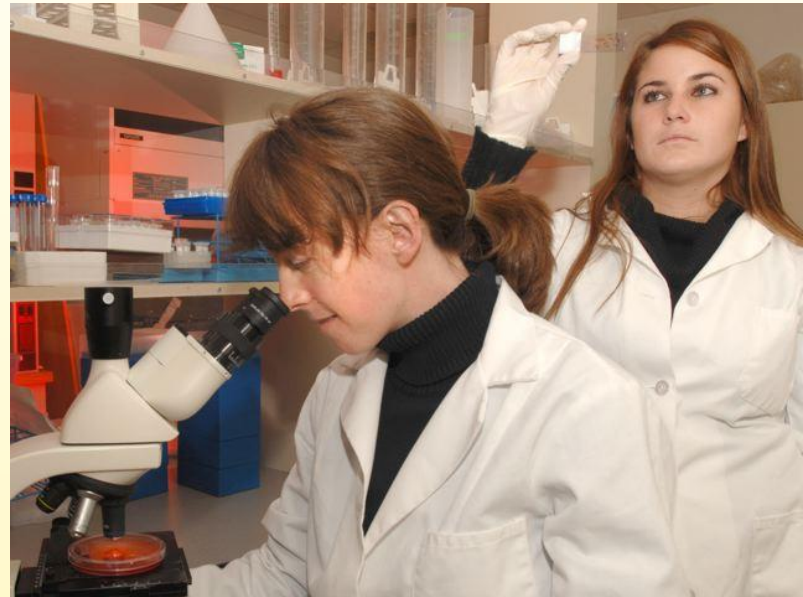
Inventory: Health Sciences Library

- Only health/medical library affiliated with an Idaho educational institution
- Two medical librarians teach research skills to more than 700 students every year
- Meets needs of distance students and others, purchasing more than 150 online reference books annually



Inventory: Biomedical Research

- Approximately 265 ISU faculty (43% of total)
- 19.5% (34 of 174) of active sponsored awards
- 30.5% (\$8,879,810 of \$29,132,916) of active sponsored awards



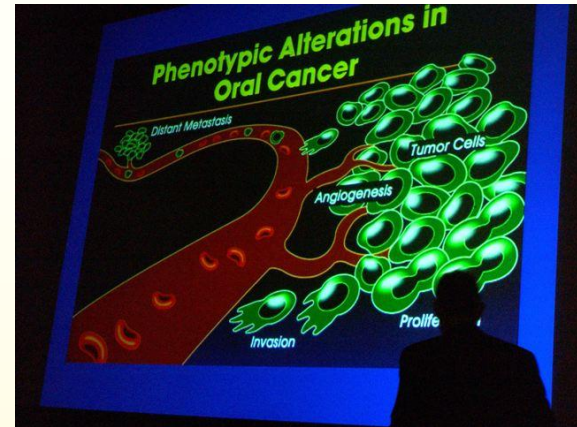
Inventory: Human Simulators

- Male Simulators: Pocatello, 9; Boise, 2; Idaho Falls, 1
- Female Simulators: Pocatello, 4; Boise, 1
- Infant Simulators: Pocatello, 8; Boise, 2
- Simulation lab environments in development



Inventory: Professional Programs

- Idaho Conference on Health Care
 - annual event offering speeches and presentations by a variety of health care experts
- Idaho Drug Utilization Review
 - working with Medicaid, improve patient care and reduce overall drug costs in Idaho; conduct retrospective analysis of patient drug usage, physician prescribing, and pharmacy dispensing activities
- Idaho Drug Information Service
 - answer patient-related drug information questions for health care professionals throughout Idaho



Inventory: Professional Programs

- Telehealth Idaho
 - research and service project that seeks to increase access to physical, oral, and mental/ behavioral health care
- Continuing Education
- Mental Health and Counseling Workshops
 - workshops for counselors, psychologists, social workers, nurses, teachers, and other mental health professionals annually in Pocatello, Boise and Coeur d'Alene.

Inventory: Anatomy Facilities

Total space	2,650 square feet
Lab cadaver capacity	8-11
Cadaver cold storage capacity	18
ISU Anatomical Donation Program	12+ annually

Inventory: Space Availability

- ISU has reserved 20,600 square feet of space for medical education expansion, which would include administration, faculty offices, and research laboratories at the following sites:
 - Nichols Hall
 - Dyer Hall
 - Owen Redfield Hall

