

# **Presentation to the Energy, Environment & Technology Committee**

**September 11, 2013**

Tom Harvey

Manager Joint Projects

Idaho Power Company

# Idaho Power Service Area and Resources

## Hydroelectric Facilities and Nameplate Capacities

1	Hells Canyon	391.5 MW
2	Oxbow	190.0 MW
3	Brownlee	585.4 MW
4	Cascade	12.4 MW
5	Swan Falls	27.2 MW
6	C. J. Strike	82.8 MW
7	Bliss	75.0 MW
8	Lower Malad	13.5 MW
9	Upper Malad	8.3 MW
10	Lower Salmon	60.0 MW
11	Upper Salmon	34.5 MW
12	Thousand Springs	8.8 MW
13	Clear Lake	2.5 MW
14	Shoshone Falls	12.5 MW
15	Twin Falls	52.9 MW
16	Milner	59.4 MW
17	American Falls	92.3 MW
<b>Total</b>		<b>1,709.0 MW</b>

## Thermal Facilities And Capacities

### Coal

▲ Jim Bridger	770.5 MW*
▲ North Valmy	283.5 MW*
▲ Boardman	64.2 MW*

**Total** 1,118.2 MW

### Natural Gas

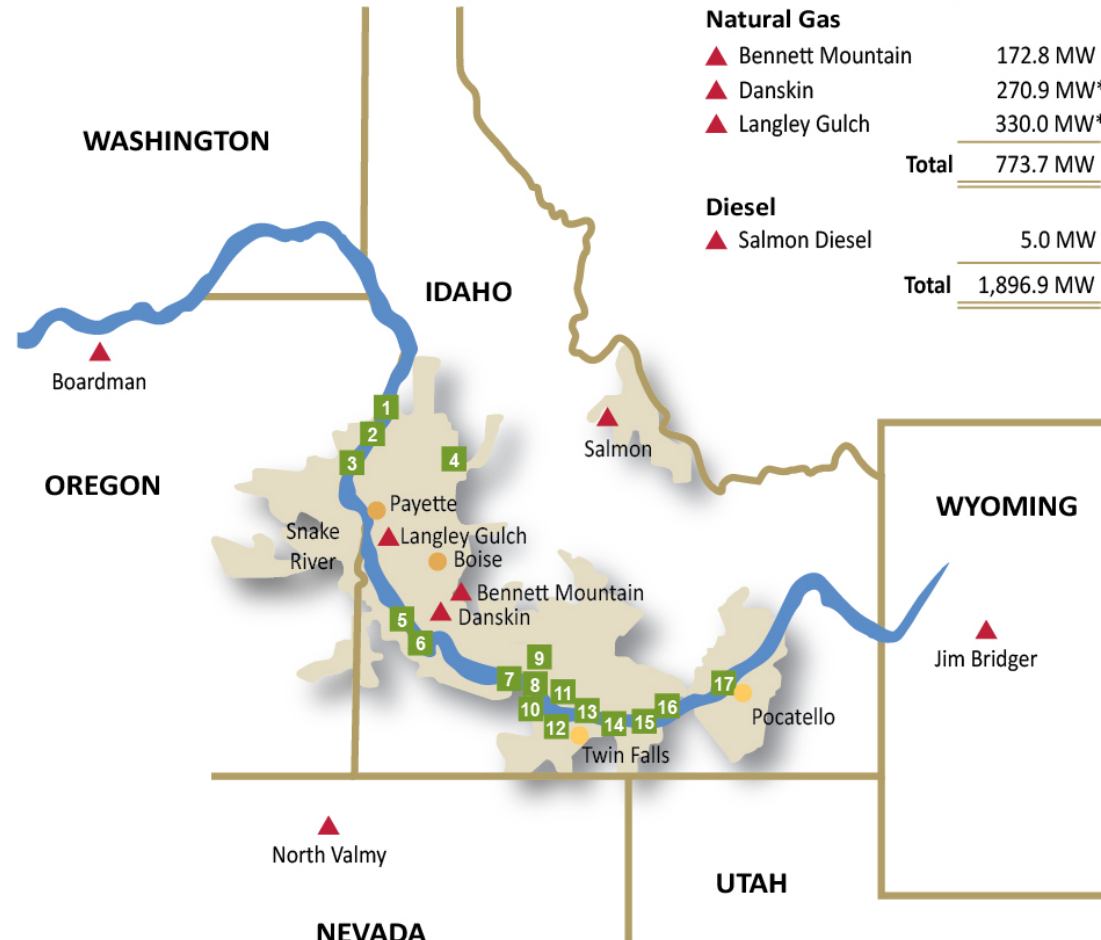
▲ Bennett Mountain	172.8 MW
▲ Danskin	270.9 MW**
▲ Langley Gulch	330.0 MW***

**Total** 773.7 MW

### Diesel

▲ Salmon Diesel	5.0 MW
-----------------	--------

**Total** 1,896.9 MW



\* Idaho Power Co. Share \*\* Danskin \*\*\* Winter Capacity

# Jim Bridger

- Ownership—PacifiCorp 2/3 and IPC 1/3
- Four 530 MW Units
- Total Capacity 2120 MW—IPC Share 707 MW
- Location—near Rock Springs, WY



# North Valmy

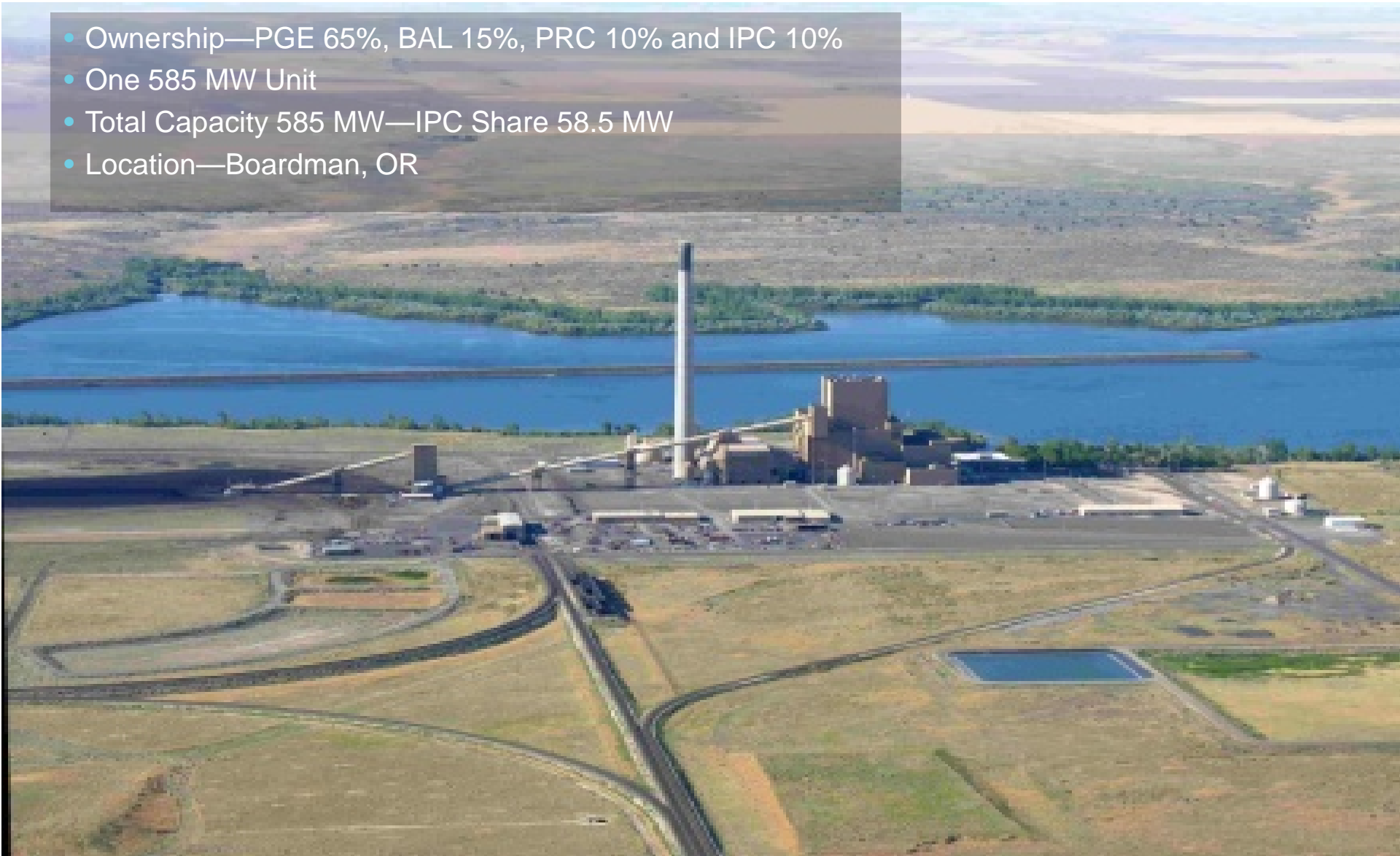
- Ownership—NV Energy 50% and IPC 50%
- Two Units-Unit 1 @ 254 MW and Unit 2 @ 267 MW
- Total Capacity 521 MW—IPC Share 260.5 MW
- Location—Near Valmy, NV





# Boardman

- Ownership—PGE 65%, BAL 15%, PRC 10% and IPC 10%
- One 585 MW Unit
- Total Capacity 585 MW—IPC Share 58.5 MW
- Location—Boardman, OR



# Coal Related Information

- **Major Impacts of Regional Haze and Mercury and Air Toxics Standard**
  - Jim Bridger (Units 1 – 4) - Installation of SCR and mercury controls
  - North Valmy (Unit 1) - Installation of Dry Sorbent Injection system
  - Boardman - Installation of Dry Sorbent Injection system and mercury controls
- **Coal Unit Environmental Investment Analysis (Coal Study)**
  - Combination of third party, partner and Idaho Power analysis
  - Supports investment in Jim Bridger SCR and North Valmy Unit #1 MATS
- **Jim Bridger SCR Certificate of Public Convenience and Necessity (CPCN)**
  - Filed with Idaho Public Utilities Commission on June 28, 2013
- **2013 Integrated Resource Plan (2013 – 2032)**
  - Jim Bridger and North Valmy operate during entire planning horizon
  - Boardman to cease coal-fired operations by December 31, 2020

# Generation Mix July 1, 2013

## Boise High Temperature 110 degrees

