



IDAHO

Department of
Health and Welfare

Health Care Task Force

**Richard Armstrong, Director
Idaho Dept. of Health and Welfare**

November 4, 2013



IDAHO DEPARTMENT OF
HEALTH & WELFARE



IDAHO

Department of
Health and Welfare

Today's Presentation

- 1. Medicaid: Cost containment strategies are working.**
- 2. Community Crisis Centers.**
- 3. Employee CEC.**
- 4. Program performance.**



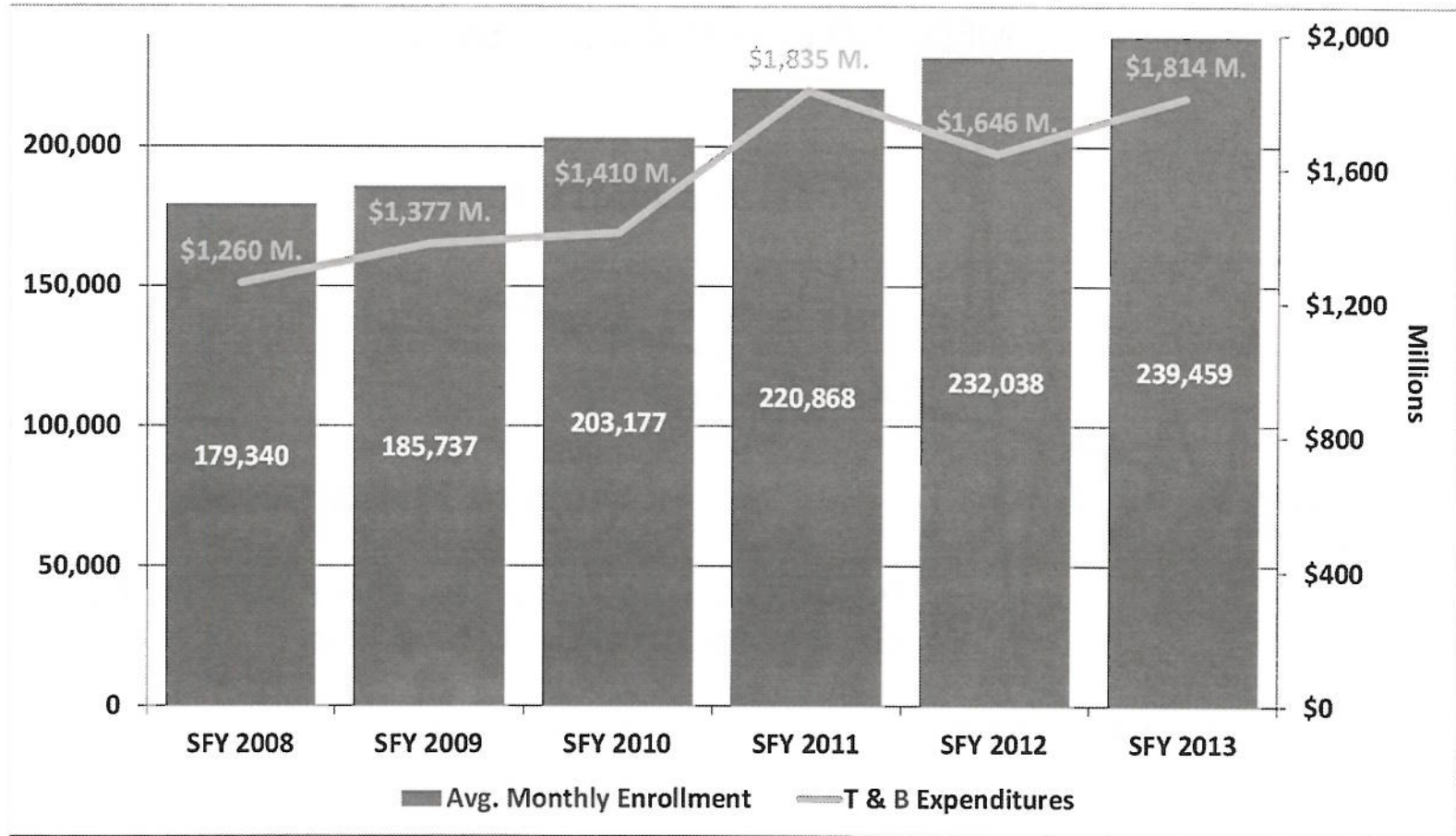
IDAHO DEPARTMENT OF
HEALTH & WELFARE



IDAHO

Department of
Health and Welfare

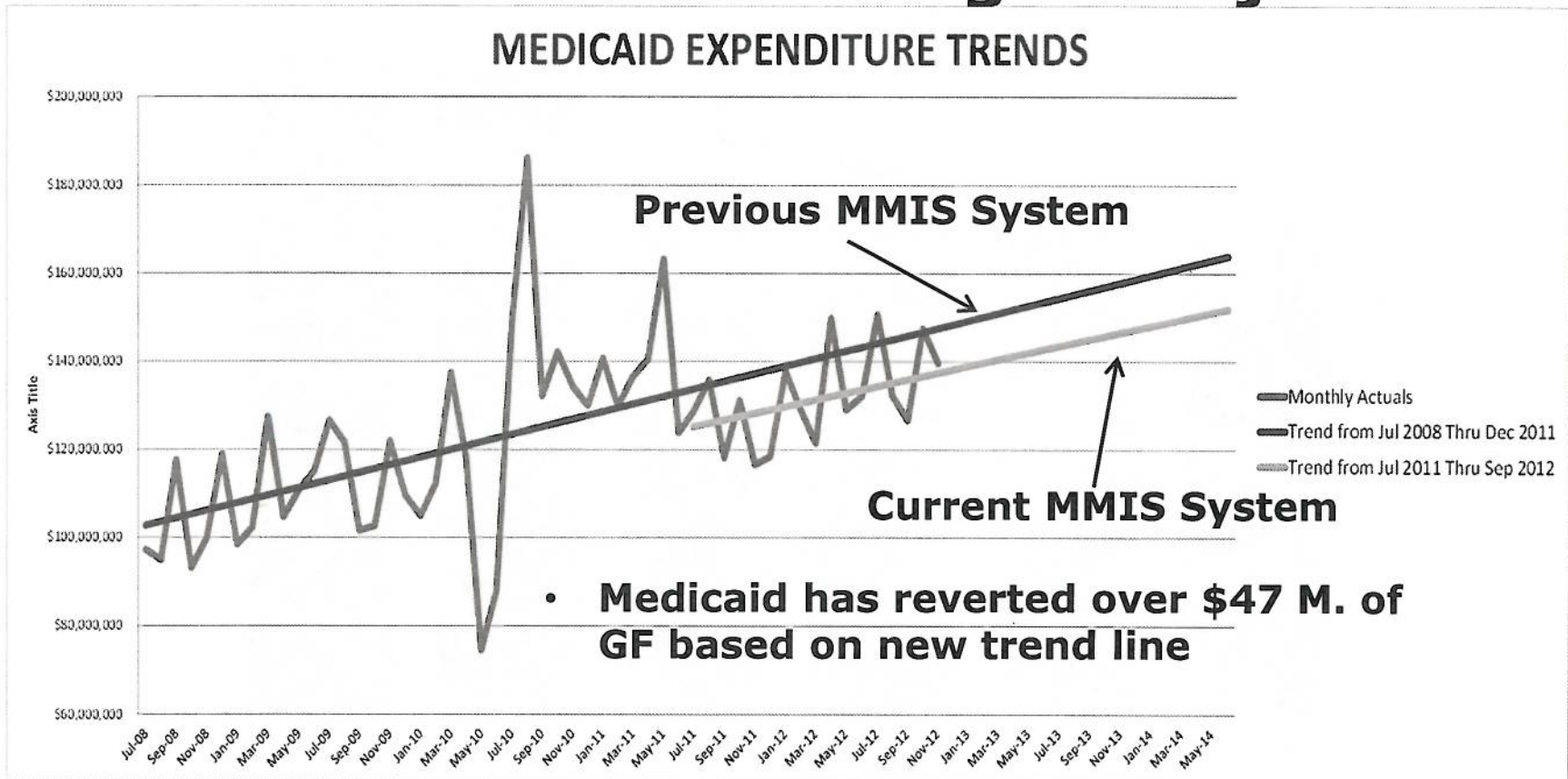
Medicaid Enrollment/Expenses



IDAHO DEPARTMENT OF
HEALTH & WELFARE

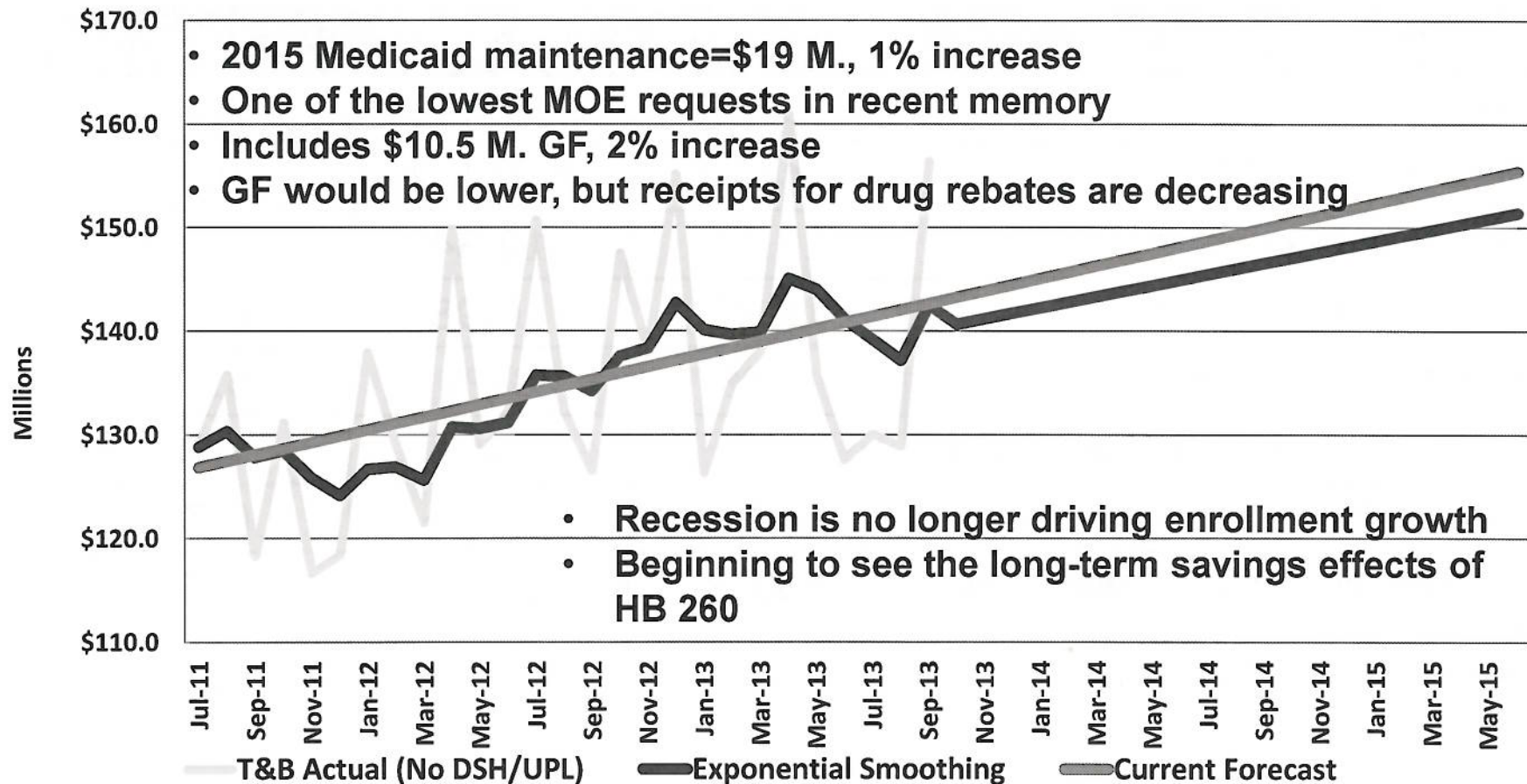


Medicaid: Growth & Budget Projections





Medicaid: Growth & Budget Projections





IDAHO

Department of
Health and Welfare

Medicaid Prescription Utilization

	SFY 2012	SFY 2013	% Change
Scripts Rx	1,965,229	2,007,432	2.1%
Scripts per 1,000 RX	8,412.4	8,385.2	-0.3%
Scripts per Patient Rx	12.32	12.34	0.2%
Days Supply PMPM Rx	16.97	16.98	0.0%
Scripts Rx % Generic	76%	81%	6.1%
Scripts Rx % Psychotherapeutic	14%	14%	1.5%
Scripts Generic Efficiency Rx	93.5%	94.1%	0.7%
Patients per 1,000 Member Avg. Rx	682.8	679.6	-0.5%

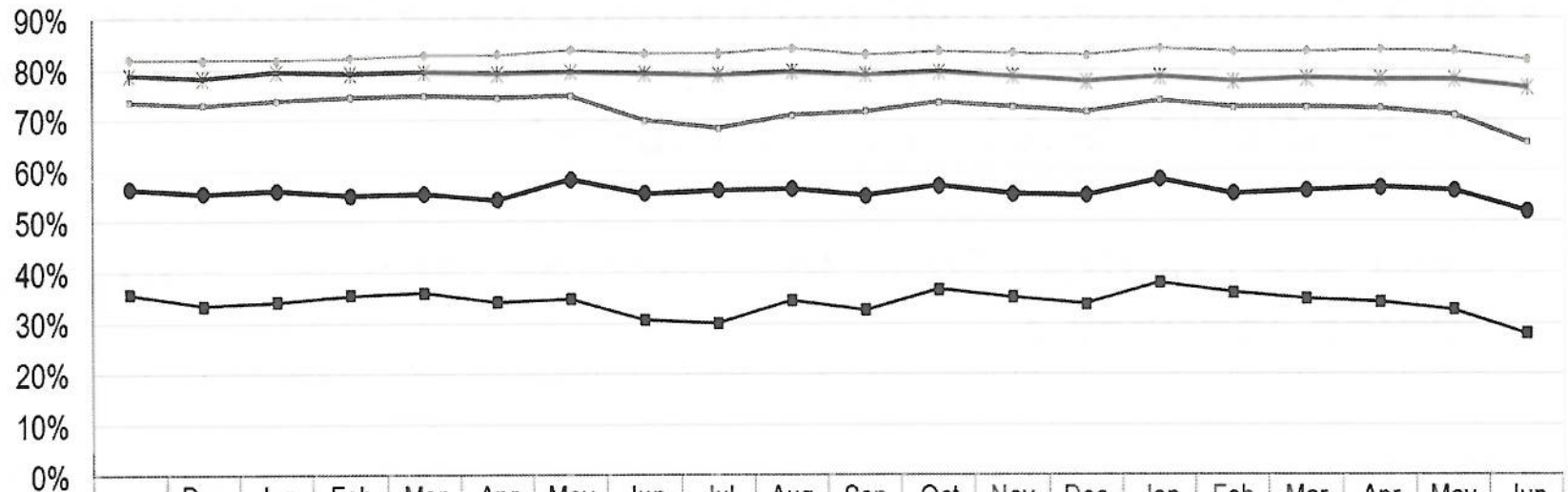
Provided by Truven Health Analytics



IDAHO DEPARTMENT OF
HEALTH & WELFARE



Percent of Medicaid Participants Utilizing Services



	Dec 2011	Jan 2012	Feb 2012	Mar 2012	Apr 2012	May 2012	Jun 2012	Jul 2012	Aug 2012	Sep 2012	Oct 2012	Nov 2012	Dec 2012	Jan 2013	Feb 2013	Mar 2013	Apr 2013	May 2013	Jun 2013	
■ Basic Children	36%	33%	34%	36%	34%	35%	31%	30%	34%	33%	37%	35%	34%	38%	36%	35%	34%	33%	28%	
● Enhanced Children	74%	73%	74%	74%	75%	74%	75%	70%	68%	71%	72%	73%	73%	72%	74%	72%	72%	72%	71%	66%
◆ Basic Adult	57%	56%	56%	55%	56%	54%	58%	56%	56%	56%	55%	57%	55%	55%	58%	56%	56%	57%	56%	52%
▲ Enhanced Adult	82%	82%	82%	82%	83%	83%	84%	83%	83%	84%	83%	84%	83%	83%	84%	83%	84%	84%	84%	82%
* Coordinated	79%	78%	80%	79%	79%	80%	79%	79%	80%	79%	79%	79%	79%	78%	79%	78%	78%	78%	78%	76%

Provided by Truven Health Analytics





IDAHO

Department of
Health and Welfare

Woodwork Effect

- **ACA requirement that individuals have insurance coverage will bring in people who are currently eligible for Medicaid, but have not applied.**
- **Most are children from low-income families. Enrollment begins January 1.**
- **Medicaid request: \$17.4 M. (\$5 M. GF) to annualize the 2014 appropriation for woodwork population.**
- **If woodwork enrollment exceeds DHW estimates, supplemental will be necessary.**



IDAHO DEPARTMENT OF
HEALTH & WELFARE



IDAHO

Department of
Health and Welfare

Community Crisis Centers for Mental Health/Substance Abuse

- **Vision: Develop 3 regional crisis centers, with plans for 7.**
- **Reduce hospitalizations, incarcerations and emergency room use**
- **Tremendous value to law enforcement agencies, which struggle with calls involving a person with a mental illness/chronic substance abuse issues.**
- **24/7/365 operation with local boards setting policy.**
- **Could be used for long-term treatment.**
- **Services provided by community partners.**
- **Leverages sustaining resources from partners.**
- **Studying successful models in other states.**
- **Estimated implementation/first year of operations is \$5.2 M. GF.**



IDAHO DEPARTMENT OF
HEALTH & WELFARE



IDAHO

Department of
Health and Welfare

CEC: Recovering Economy Offers Higher Paying Opportunities

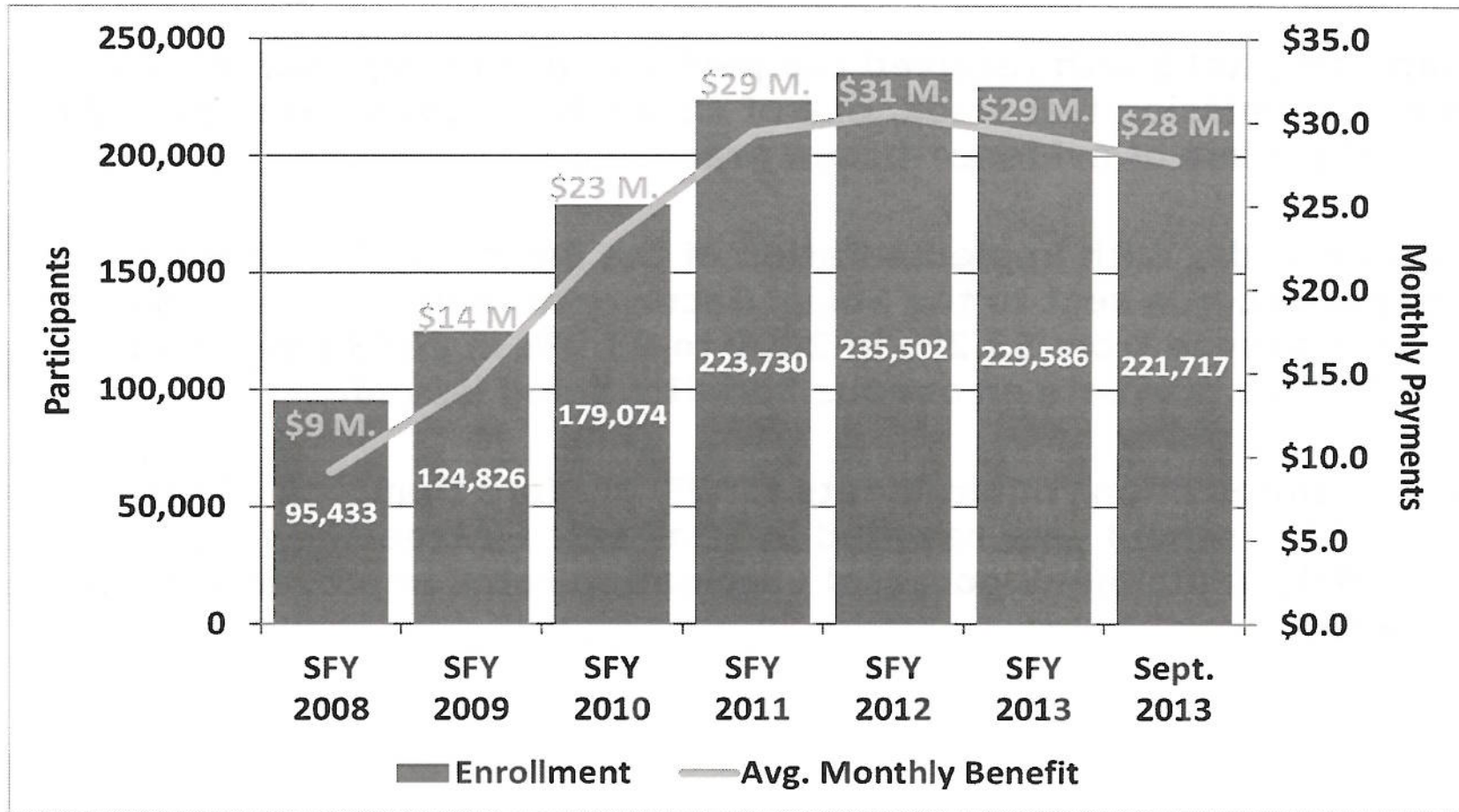
- **On average, state employee pay lags 18.9% behind labor market.**
- **Child Welfare social workers experiencing 14% turnover, overall voluntary agency turnover is 11.5%.**
- **Health facility surveyors exiting to private market for better salaries; federal performance standards for timeliness of surveys are not being met, state could face penalties.**
- **DHW concerned about losing high-performing employees. Pay, workload and stress are some of the top reasons employees are leaving.**



IDAHO DEPARTMENT OF
HEALTH & WELFARE



Food Stamps: A Recovering Economy





IDAHO

Department of
Health and Welfare

Other High Performing Programs

- **State Hospital South received top performance recognition from the Joint Commission last week, one of six Idaho hospitals recognized for consistent use of evidence-based practices.**
- **Vital Records: With implementation of the Electronic Death Registration System, records sent to the Social Security Administration on a timely basis improved from 53.2% in 2009 to 93.9% in 2013 (nat'l avg. is 64%). This prevents erroneous benefits being issued.**
- **New immunization requirements for 7th graders that took effect for the 2012-2013 school year resulted in TDaP rates increasing from 14.2% to 79.5%, while meningococcal vaccination rates improved from 5.6% to 78.6%.**



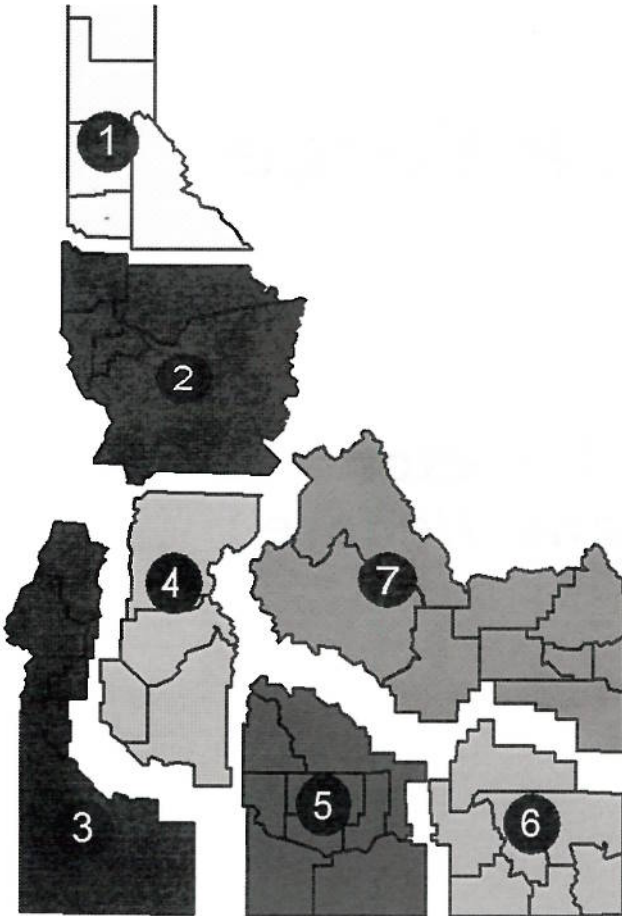
IDAHO DEPARTMENT OF
HEALTH & WELFARE



IDAHO

Department of
Health and Welfare

June 2013 Program Participation by Region



Region	Estimated Population	Receiving Cash	Child Care Assistance	Food Stamps	Medicaid	Totals
1	215,460 13.5%	3,043 1.4%	931 0.4%	30,954 14.4%	32,285 15.0%	43,392 20.1%
2	106,502 6.7%	1,524 1.4%	291 0.3%	11,009 10.3%	12,912 12.1%	16,588 15.6%
3	258,653 16.2%	3,977 1.5%	1,450 0.6%	52,936 20.5%	55,205 21.3%	71,474 27.6%
4	451,664 28.3%	4,309 1.0%	1,522 0.3%	51,898 11.5%	52,466 11.6%	70,875 15.7%
5	187,171 11.7%	1,851 1.0%	941 0.5%	26,377 14.1%	32,825 17.5%	40,448 21.6%
6	166,747 10.4%	2,102 1.3%	682 0.4%	25,027 15.0%	28,071 16.8%	36,073 21.6%
7	209,531 13.1%	1,537 0.7%	871 0.4%	28,759 13.7%	34,200 16.3%	42,845 20.4%
Totals	1,595,728 100.0%	18,343 1.1%	6,688 0.4%	226,960 14.22%	247,964 15.5%	321,695 20.2%



IDAHO DEPARTMENT OF
HEALTH & WELFARE



IDAHO

Department of
Health and Welfare

Health Care Task Force

**Richard Armstrong, Director
Idaho Dept. of Health and Welfare**

November 4, 2013



IDAHO DEPARTMENT OF
HEALTH & WELFARE