



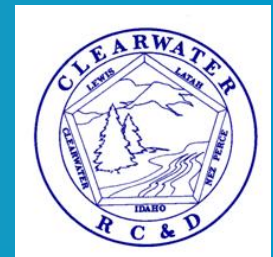
Clearwater Basin Collaborative

Clearwater Basin Collaborative

*Bill Higgins, Idaho Forest Group, LLC
Grangeville, Idaho*

for

*Federal Lands Interim Committee
December 4, 2013*



Backcountry Hunters and Anglers * Citizens-at-large * Clearwater Paper Corporation * Clearwater County Commissioners * Economic Development * Framing Our Community * Great Burn Study Group * Idaho Conservation League * Idaho County Commissioners * Idaho Fish and Game * Idaho Forest Group * Independent Loggers * Intermountain Forest Association * Lewiston OHV Club * Nez Perce Tribe * Outfitters and Guides * P.L.A.Y. * Rocky Mountain Elk Foundation * The Nature Conservancy * The Wilderness Society * Trout Unlimited *



Clearwater Basin Collaborative

Convening of CBC

Timber Wars

Fish Lake Lawsuit 2000

Clearwater Elk Collaborative

Nez Perce Tribe joins

Clearwater RC&D Council – Fiscal Agent

Senator Mike Crapo convenes CBC– May, 2008

Backcountry Hunters and Anglers * Citizens-at-large * Clearwater County Commissioners * Economic Development
* Empire Lumber* Framing Our Community * Great Burn Study Group * Idaho Conservation League * Idaho County
Commissioners * Idaho Fish and Game * Idaho Forest Group * Independent Loggers * Intermountain Forest
Association * Lewiston OHV Club * Nez Perce Tribe * Outfitters and Guides * P.L.A.Y. * Rocky Mountain Elk
Foundation * The Nature Conservancy * The Wilderness Society * Trout Unlimited *



Clearwater Basin Collaborative

Purpose and Vision

Purpose:

“...to provide recommendations for actions concerning the use and management of lands within Clearwater Basin in Idaho.”

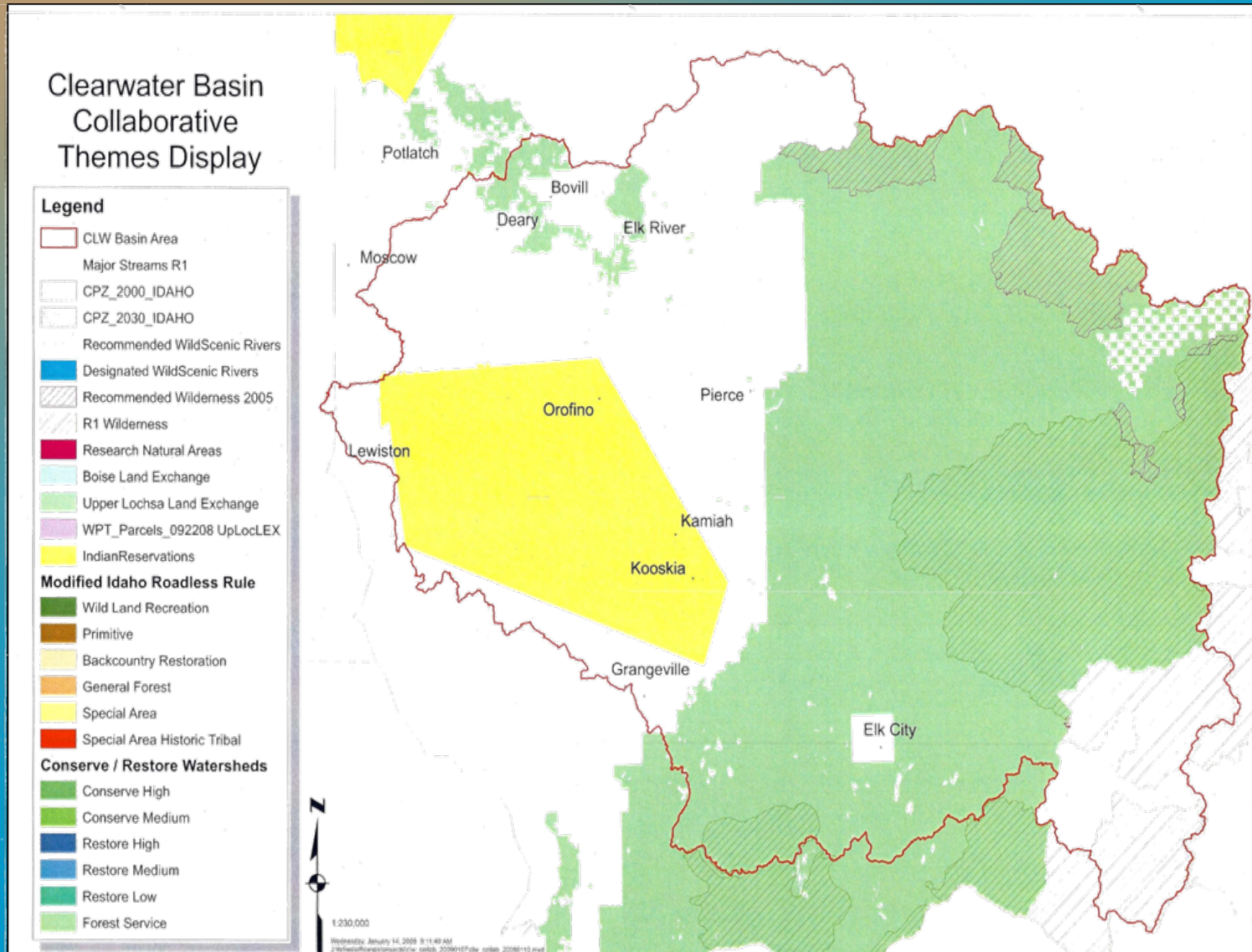
Vision:

“...to enhance and protect the ecological and economic health of our forests, rivers, and communities within the Clearwater Basin by working collaboratively across a diversity of interests.”

Backcountry Hunters and Anglers * Citizens-at-large * Clearwater County Commissioners * Economic Development
Empire Lumber Framing Our Community * Great Burn Study Group * Idaho Conservation League * Idaho County
Commissioners * Idaho Fish and Game * Idaho Forest Group * Independent Loggers * Intermountain Forest
Association * Lewiston OHV Club * Nez Perce Tribe * Outfitters and Guides * P.L.A.Y. * Rocky Mountain Elk
Foundation * The Nature Conservancy * The Wilderness Society * Trout Unlimited *

Geographic Scope

Clearwater and Nez Perce National Forest Lands in Idaho and Clearwater County



Membership

- Backcountry Hunters and Anglers
- Citizens-at-large
- Clearwater County Commissioners
- Economic Development
- Empire Lumber
- Framing Our Community
- Great Burn Study Group
- Idaho Conservation League
- Idaho County Commissioners
- Idaho Fish and Game
- Idaho Forest Group
- Independent Loggers
- Lewiston OHV Club
- Nez Perce Tribe
- Outfitters and Guides
- P.L.A.Y.
- Rocky Mountain Elk Foundation
- The Nature Conservancy
- The Wilderness Society
- Trout Unlimited



Clearwater Basin Collaborative

Accomplishments to-date

Focused on Increasing Active Management

Selway–Middle Fork CFLRP Project Award

- One of 10 original national projects awarded in 2010
- Proposal jointly prepared with USFS
- Up to \$40 million added funding into Basin
- Project area planned to produce > 120 mmbf of timber over ten years plus much other restoration
- Must be additive to be viewed as a success by industry
- On track at this point but hurdles remain

Backcountry Hunters and Anglers * Citizens-at-large * Clearwater County Commissioners * Economic Development * Empire Lumber* Framing Our Community * Great Burn Study Group * Idaho Conservation League * Idaho County Commissioners * Idaho Fish and Game * Idaho Forest Group * Independent Loggers * Intermountain Forest Association * Lewiston OHV Club * Nez Perce Tribe * Outfitters and Guides * P.L.A.Y. * Rocky Mountain Elk Foundation * The Nature Conservancy * The Wilderness Society * Trout Unlimited *

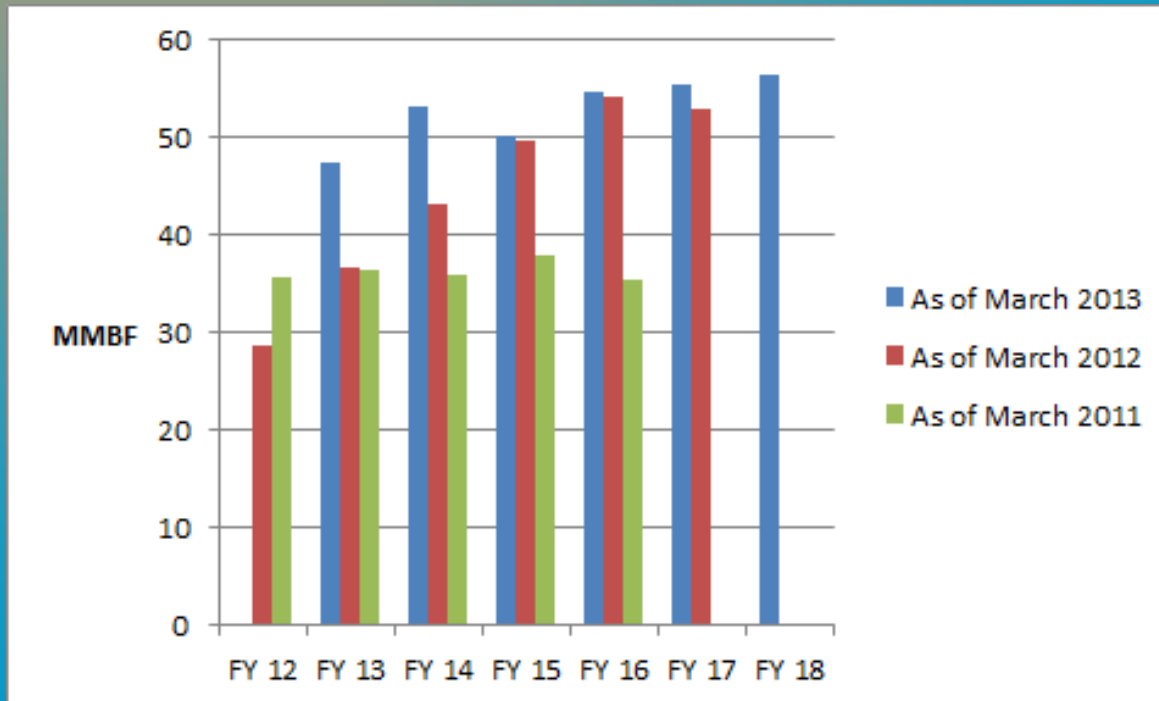


Clearwater Basin Collaborative

Accomplishments to-date

Focused on Increasing Active Management

Forestwide Harvest Targets are up 50%



Backcountry Hunters and Anglers * Citizens-at-large * Clearwater County Commissioners * Economic Development * Empire Lumber* Framing Our Community * Great Burn Study Group * Idaho Conservation League * Idaho County Commissioners * Idaho Fish and Game * Idaho Forest Group * Independent Loggers * Intermountain Forest Association * Lewiston OHV Club * Nez Perce Tribe * Outfitters and Guides * P.L.A.Y. * Rocky Mountain Elk Foundation * The Nature Conservancy * The Wilderness Society * Trout Unlimited *



Clearwater Basin Collaborative

Accomplishments to-date

Focused on Increasing Active Management

Nez Perce Clearwater selected as an early-adopter forest under new Planning Rule

- Credit to CBC for Forest being selected
 - CBC Cited in National Press Release
- Revised Forest Plan provides opportunity to enshrine and authorize an increased level of management and management direction
- Draft Plan will be out by spring

Backcountry Hunters and Anglers * Citizens-at-large * Clearwater County Commissioners * Economic Development
Empire Lumber Framing Our Community * Great Burn Study Group * Idaho Conservation League * Idaho County
Commissioners * Idaho Fish and Game * Idaho Forest Group * Independent Loggers * Intermountain Forest
Association * Lewiston OHV Club * Nez Perce Tribe * Outfitters and Guides * P.L.A.Y. * Rocky Mountain Elk
Foundation * The Nature Conservancy * The Wilderness Society * Trout Unlimited *



Clearwater Basin Collaborative

Accomplishments to-date Focused on Increasing Active Management

Landscape Assessment Phase 1

- Nature Conservancy provides science lead
- Describes forest structure conditions as compared to Historical Range of Variation baseline
- Helps provide the Ecological “Zone of Agreement” and science case for treatment that will yield significantly increased timber harvest in the front country where wildfires will continue to be suppressed and mechanical treatment is the preferred vegetation treatment tool
- Expected to be highly influential in the revised Forest Plan

Backcountry Hunters and Anglers * Citizens-at-large * Clearwater County Commissioners * Economic Development * Empire Lumber* Framing Our Community * Great Burn Study Group * Idaho Conservation League * Idaho County Commissioners * Idaho Fish and Game * Idaho Forest Group * Independent Loggers * Intermountain Forest Association * Lewiston OHV Club * Nez Perce Tribe * Outfitters and Guides * P.L.A.Y. * Rocky Mountain Elk Foundation * The Nature Conservancy * The Wilderness Society * Trout Unlimited *



Clearwater Basin Collaborative

Accomplishments to-date Focused on Increasing Active Management

Key Accomplishment – Shift to Landscape Level Planning
and Project Development – Cultural shift for USFS

- Old way – shotgun approach with limited accomplishment
- New way – large planning areas with significantly increased vegetation treatment (timber harvest) that is needed to move forest toward Desired Condition
- Collaboration has been critical in providing social license and support needed for USFS to be courageous in their proposals

Backcountry Hunters and Anglers * Citizens-at-large * Clearwater County Commissioners * Economic Development
* Empire Lumber* Framing Our Community * Great Burn Study Group * Idaho Conservation League * Idaho County
Commissioners * Idaho Fish and Game * Idaho Forest Group * Independent Loggers * Intermountain Forest
Association * Lewiston OHV Club * Nez Perce Tribe * Outfitters and Guides * P.L.A.Y. * Rocky Mountain Elk
Foundation * The Nature Conservancy * The Wilderness Society * Trout Unlimited *



Clearwater Basin Collaborative

Collaboration Strengths and Limitations Discussion

Limitations

- Limited geographic scope
- Requires people with collaboration skills and technical knowledge – not everybody has them
- A collaborative’s success may not be replicable in other places
- Difficult to maintain sustained energy by all participants for the long run – participants need “skin in the game”
- Non-participants may be able to use appeals and litigation to stop or change outcomes desired by collaborative

Backcountry Hunters and Anglers * Citizens-at-large * Clearwater County Commissioners * Economic Development
Empire Lumber Framing Our Community * Great Burn Study Group * Idaho Conservation League * Idaho County
Commissioners * Idaho Fish and Game * Idaho Forest Group * Independent Loggers * Intermountain Forest
Association * Lewiston OHV Club * Nez Perce Tribe * Outfitters and Guides * P.L.A.Y. * Rocky Mountain Elk
Foundation * The Nature Conservancy * The Wilderness Society * Trout Unlimited *



Clearwater Basin Collaborative

Collaboration Strengths and Limitations Discussion

Strengths

- Collaboration embraced by USFS
- Historical adversaries become allies
 - Abandon “us versus them” that results in either winners and losers or all losers
 - Win–Win solutions become the norm
- Vision – Extremists become marginalized and are rarely successful in disrupting the will of the collaborative who represent a balanced view of forest management

Backcountry Hunters and Anglers * Citizens-at-large * Clearwater County Commissioners * Economic Development
Empire Lumber Framing Our Community * Great Burn Study Group * Idaho Conservation League * Idaho County
Commissioners * Idaho Fish and Game * Idaho Forest Group * Independent Loggers * Intermountain Forest
Association * Lewiston OHV Club * Nez Perce Tribe * Outfitters and Guides * P.L.A.Y. * Rocky Mountain Elk
Foundation * The Nature Conservancy * The Wilderness Society * Trout Unlimited *



Clearwater Basin Collaborative

Check us out @

www.clearwaterbasincollaborative.org

Questions?

Backcountry Hunters and Anglers * Citizens-at-large * Clearwater Paper Corporation * Clearwater County Commissioners * Economic Development * Framing Our Community * Great Burn Study Group * Idaho Conservation League * Idaho County Commissioners * Idaho Fish and Game * Idaho Forest Group * Independent Loggers * Intermountain Forest Association * Lewiston OHV Club * Nez Perce Tribe * Outfitters and Guides * P.L.A.Y. * Rocky Mountain Elk Foundation * The Nature Conservancy * The Wilderness Society * Trout Unlimited *