



BROADBAND ACCESS STUDY COMMITTEE

Boise, Idaho

October 6, 2015



LinkIDAHO (SBI)

- FUNDING FROM NTIA FOR BROADBAND MAPPING AND PLANNING (5 YEAR GRANT PROGRAM)
- LOCAL, REGIONAL AND STATE FOCUS
- IDENTIFY BROADBAND NEEDS, OPPORTUNITIES AND PARTNERSHIPS
- WEB SITE: [HTTP://LINK.IDAHO.GOV/CONTENT/MAPS](http://link.idaho.gov/content/maps)

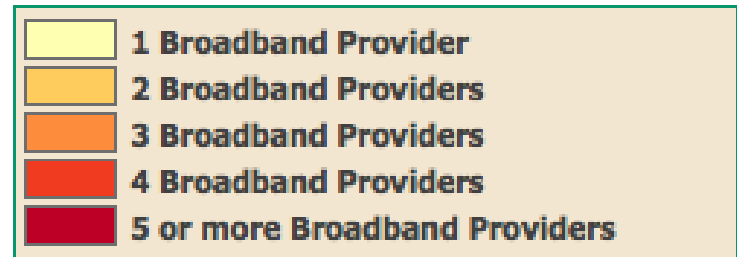
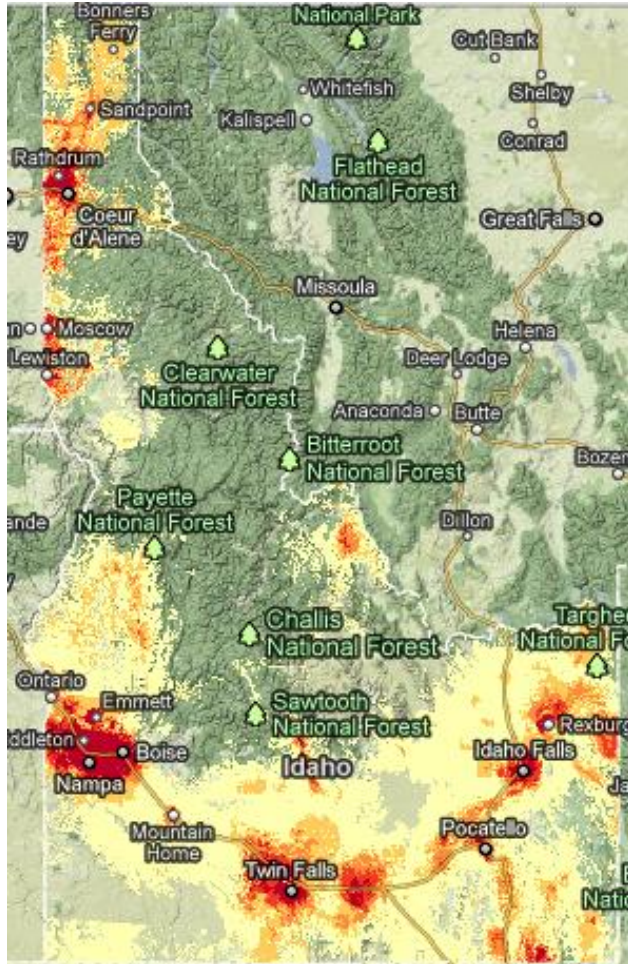
STRATEGY

- LINKIDAHO PROJECT WAS TECHNOLOGY & PROVIDER NEUTRAL.
- REMOVE BARRIERS TO BROADBAND ACCESSIBILITY AND UTILIZATION. (IDENTIFY THE GAPS).
- ENCOURAGE BROADBAND INVESTMENTS THAT WILL RESULT IN BETTER JOBS AND BUSINESS OPPORTUNITIES, EXPANDED ACCESS TO HEALTH CARE, EDUCATION, PUBLIC SAFETY AND GOVERNMENT.

OVERVIEW OF WORK COMPLETED

- BROADBAND ASSESSMENTS; MAPPING, STAKEHOLDER COLLABORATION, CONSUMER/BUSINESS SURVEYS.
- IDENTIFIED DATA/RESOURCES TO SUPPORT WORK
- DEVELOPED COMMUNICATION TOOLS
- DEVELOPED FOUR REGIONAL BROADBAND PLANS
- DEVELOP STATE BROADBAND FRAMEWORK PLAN

IDAHO BROADBAND



<http://link.idaho.gov/content/maps>

PROVIDE FEEDBACK ON PROVIDER DATA. CLICK ON LOCATION OR TYPE IN ADDRESS. CLICK PROVIDE FEEDBACK IF PROVIDER DATA IS NOT ACCURATE.

OUTREACH & TRAINING

- LINKIDAHO MOVIE
- BROADBAND 201
- CONNECTING BUSINESSES TO BROADBAND
- HEALTH INFORMATION TECHNOLOGY
- BROADBAND POLICY
- BROADBAND BEST PRACTICE

Karen M

- My account
- ▢ Create content
- ▢ Administer
- Log out

Tools & Resources

- Dashboard
- Calendar
- Documents
- Links
- Maps of Idaho
- News Feeds
- Report a Bug
- Business Survey

LinkIDAHO Web Sites

- Basecamp Log In
- Contacts Database
- LinkIDAHO Main Site

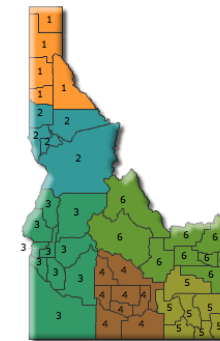
Training Modules

- Best Practices
- Broadband 201
- Connecting Businesses

Idaho Broadband Planning Dashboard

Select a Region

Click Below to Access Regional Investment Plan
(currently disabled while under development)



Listing of Counties by Region
(opens as a pop-up window)

1 read

Select a Resource

Idaho Broadband Maps

- Interactive
- Demand Map
- Subscription Map
- Maps of Idaho

Visioning Research

- Interview Process *(pdf)*
- Final Report *(pdf)*
- Interactive Movie *(new window)*

Survey Research

- 2010 Survey *(new window)*

Selection Datasets *(pop-up)*

- Regional Census Data *(updated!)*
- State Internet Usage by Location
- State Internet Usage by Type
- Regional Broadband Availability Data
- Gaps and Availability Data

Broadband Consoles

- Availability
- Adoption
- Demand

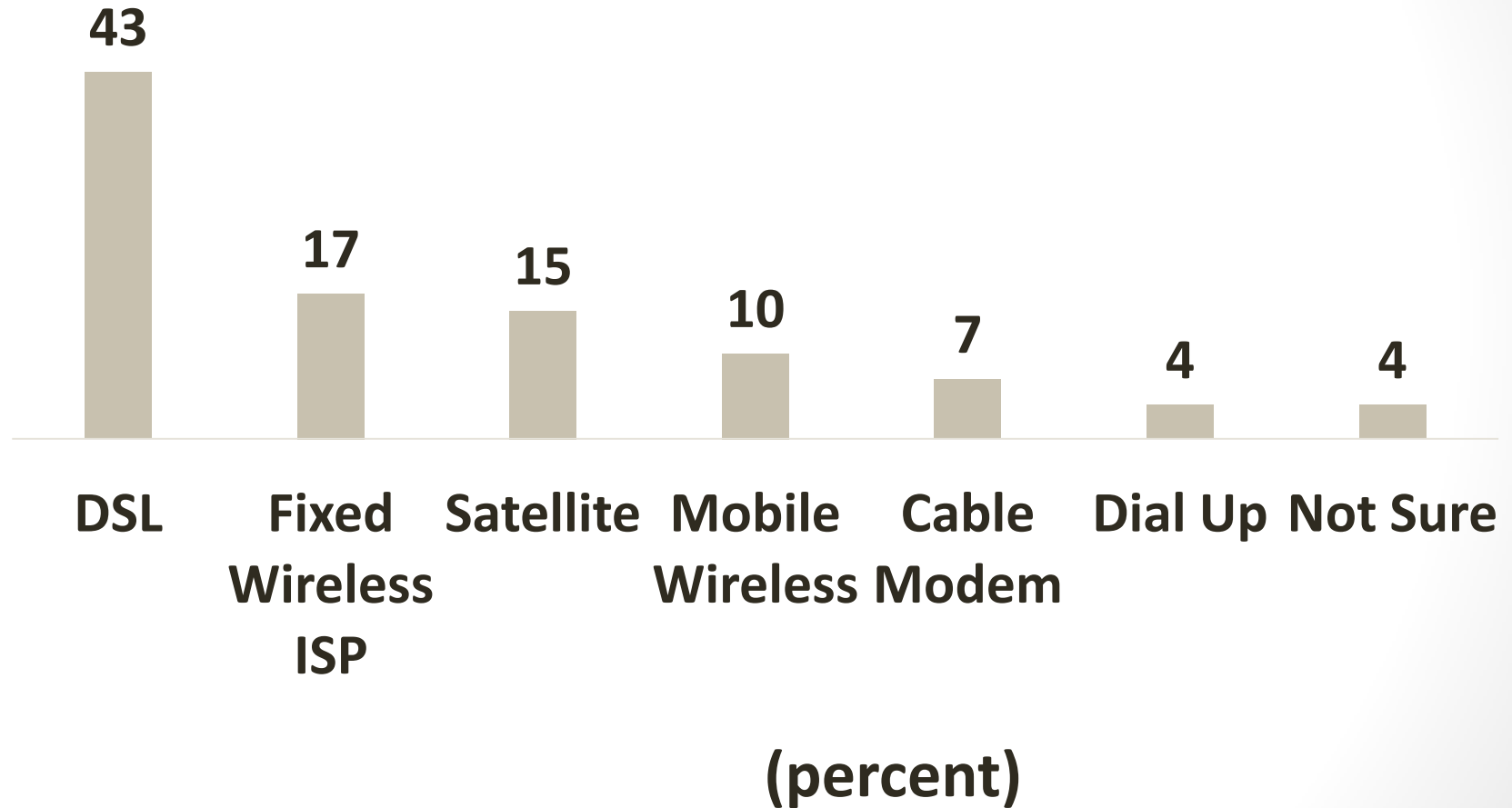
BROADBAND ADVISORY TEAM (LBAT)

- COLLABORATE TO WORK TOGETHER TO ENHANCE BROADBAND ACCESS AND USE IN THE STATE.
- COMMUNICATE, OUTREACH AND SHARE INFORMATION ABOUT BROADBAND EFFORTS OCCURRING STATEWIDE AND REGIONALLY.
- INTERACT WITH POLICY MAKERS AND INFORM THEM ABOUT BROADBAND NEEDS AND BENEFITS IN IDAHO.
- DEVELOP AND SUGGEST STRATEGIC PARTNERSHIPS AND FUNDING OPPORTUNITIES TO IMPROVE BROADBAND AVAILABILITY AND USE IN IDAHO.
- PROVIDE INPUT ON THE STATEWIDE BROADBAND FRAMEWORK.
- ADVISE/IDENTIFY HOW TO TURN INTO A SUSTAINABLE PROJECT.

FUTURE NEEDS

- CONTINUE TO WORK ON THE BROADBAND FRAMEWORK
- CONTINUE TO GATHER MAPPING DATA FROM PROVIDERS AND ANCHOR INSTITUTIONS
- BROADBAND DATA VERIFICATION EFFORT
- CONTINUE TO ADDRESS BROADBAND NEEDS (GAPS)
- TRANSITION LINKIDAHO WEBSITE TO STATE ENTITY
- [HTTP://LINK.IDAHO.GOV/CONTENT/MAPS](http://link.idaho.gov/content/maps)

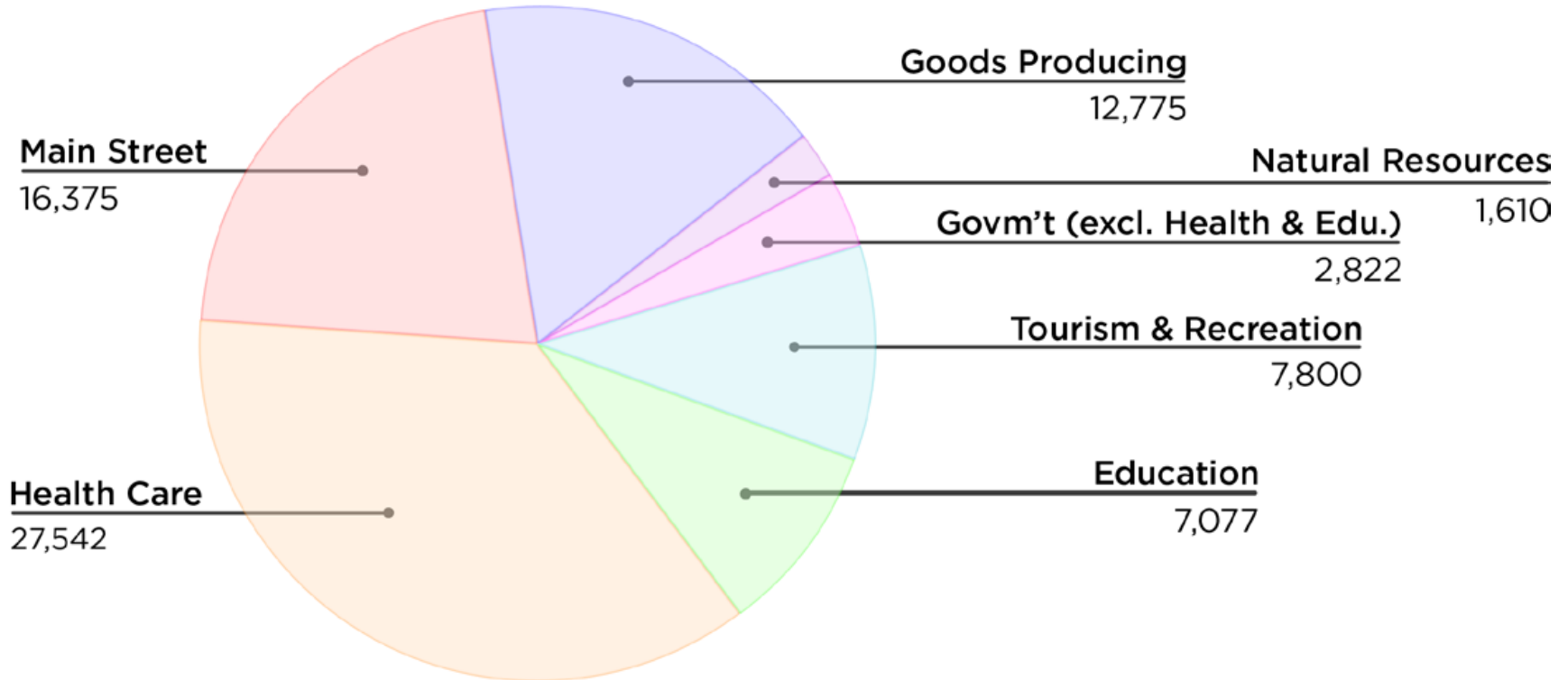
HOW DO YOU CONNECT?



POLICY IMPLICATIONS

- **SPARSE POPULATION = MORE EXPENSIVE INFRASTRUCTURE**
- **RURAL HOUSEHOLDS LIKELY DON'T OFFER RETURN ON INVESTMENT FOR ISPS**
- **PUBLIC BROADBAND INVESTMENT MAKES MORE SENSE IN SCHOOLS, LIBRARIES AND MAYBE MEDICAL FACILITIES**
- **TECHNOLOGY CHANGES CONSTANTLY**
- **HIGH SPEED CONNECTIVITY IS VALUABLE BECAUSE OF THE OPPORTUNITIES IT PROVIDES ALL IDAHO RESIDENTS**

APPROXIMATELY 80 % OF FORECASTED JOB GROWTH IN IDAHO (2011 – 2020) INVOLVES USE OF BROADBAND



LESSONS LEARNED

- 1. IDAHO IS LOOKING FOR A PRIVATE SOLUTION TO BROADBAND CONNECTIVITY, WORKS WELL IN URBAN IDAHO NOT AS WELL IN RURAL IDAHO**
- 2. TALK TO WIRELESS PROVIDERS TO LEARN WHAT IS NEEDED TO GET BROADBAND CONNECTIVITY TO RURAL IDAHO RESIDENTS.**
- 3. ASSIST LIBRARIES IN PROVIDING BROADBAND CONNECTIVITY TO IDAHO RESIDENTS WHO CANNOT AFFORD PRIVATE ACCESS OR DO NOT LIVE IN AN AREA WHERE BROADBAND CONNECTIVITY IS AVAILABLE.**
- 4. DURING MY TENURE WORKING ON THE LINKIDAHO PROJECT IEN LED THE WAY IN EXPANDING BROADBAND CONNECTIVITY TO ALL RURAL RESIDENTS AND BUSINESSES NOT JUST**

LESSONS LEARNED

- 5. TELEMEDICINE WILL BE THE NEXT DRIVER OF EXPANDING BROADBAND CONNECTIVITY IN RURAL IDAHO**
- 6. WORK CLOSELY WITH FIRST NET—OPENING PUBLIC SAFETY COMMUNICATION TOWERS STATEWIDE AND IN THE REGION TO PRIVATE PROVIDERS COULD GREATLY INCREASE WIRELESS BROADBAND CONNECTIVITY TO THOSE PARTS OF RURAL IDAHO STILL LACKING BROADBAND CONNECTIVITY.**
- 7. AMMON, IDAHO IS A SUCCESSFUL MUNICIPAL BROADBAND INITIATIVE IN THE STATE**
- 8. WHEN IEN WAS DISMANTLED THE COST OF BROADBAND CONNECTIVITY IN RURAL SCHOOL DISTRICTS SKYROCKETED. IEN HAD FIGURED OUT HOW TO PROVIDE BROADBAND CONNECTIVITY FOR**

CONTACT INFORMATION

Mike Field
Advocate for Rural Idaho
208-867-2004

