

Health Quality Planning Commission 2015

Report on areas of focus to the Health Care Task Force

J. Robert Polk MD MPH
Chair, HQPC
October 13, 2015

Areas of Focus 2014-2015

- **Time Sensitive Emergencies**, work done by HQPC in 2011 and 2012. Dec 2012 letter to the legislature; HCR 10 passed in 2013. TSE Senate bill 1329 passed in 2014 creating a system of care for TSE (heart attack, stroke and trauma). HQPC continues to follow this work.
- **Idaho SHIP**: HQPC had previously sent a letter to the legislature expressing its' interest in a statewide database that would allow us to measure the quality of care in the state. This is now part of the SHIP and HQPC maintains an active interest in obtaining a statewide database. Specific goals 2 and 5 of the SHIP.

Areas of Focus 2014-2015

- **Telehealth** in Idaho: HQPC examined the role of telehealth in improving quality of care in Idaho and sent a letter of support to the legislature February 4, 2015
- **End of Life Issues and Advance Care Planning:** HQPC is supportive of the Idaho Community Initiative on Advance Care Planning (ICIACP). This initiative is to improve advance care planning to ensure that the citizens in Idaho have their end of life choices clearly defined and honored. Pilot to be done late 2015, early 2016, likely in southwest Idaho with goal to expand over 3 years across the state.

Areas of Focus 2014-2015

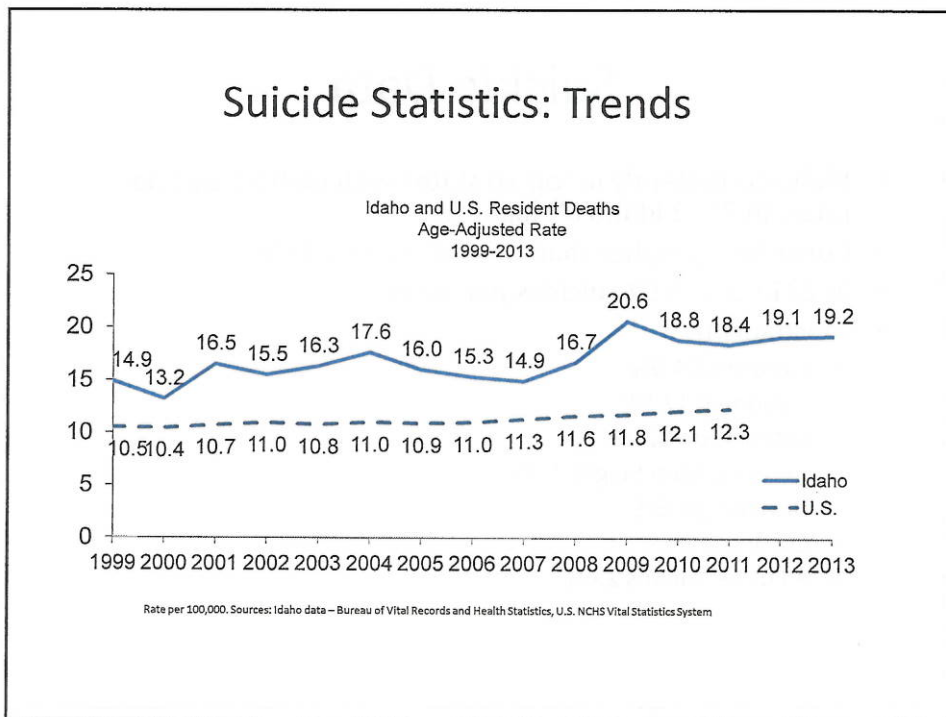
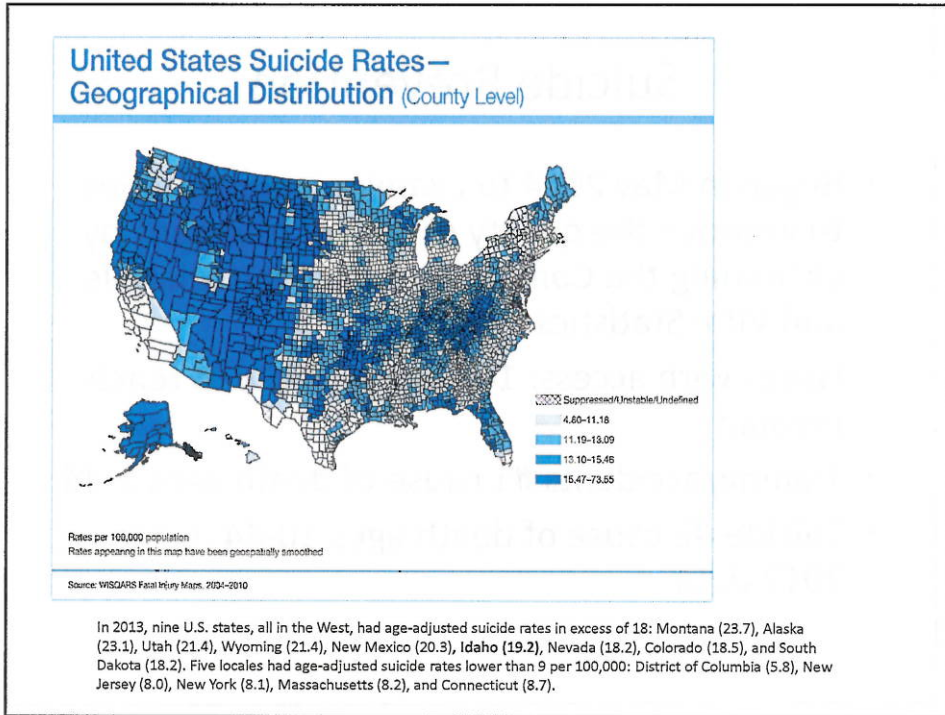
- HQPC charged with monitoring effectiveness of **Idaho Health Data Exchange, IHDE**, quarterly. Annual report 2015 was submitted.
 - Grant from the Office of the National Coordinator completed
 - New vendor secured and is up and running (Orion Health)
 - Users 303 (2011) to 2800+ (2014)
 - Number of requests 2 mln (2011) to 6.7 mln (2014)
 - Support SHIP/HIT Workgroup, Telehealth, TSE, PCMH work
 - IHDE assisting with the RFP process for data analytics for the SHIP

Suicide Prevention

- Began in May 2014 to examine opportunities to improve the quality of care of Idahoans by examining the Commonwealth Fund analysis and Vital Statistics report
- Issues with access: 142 psychiatrists to reach median
- Trauma/accidents #1 cause of death ages 1-44
- Suicide #2 cause of death ages 10-44, using 2012 data

Suicide Data

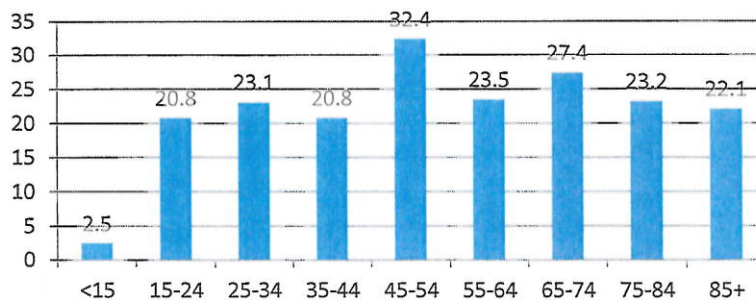
- Idaho consistently in top 10 states with highest suicide rates; in 2013 Idaho 6th highest
- Consistently higher than US rate 19.2 vs 12.9
- In 2013 is at 5.92 suicides per week
- Mechanisms:
 - Firearms 64.9%
 - Poisoning 17.5%
 - Suffocation 12.3%
 - Jumping from height 1.3%
 - Drowning 0.6%
 - Cutting 0.6%
 - All other means 2.6%



Suicide Facts in Idaho

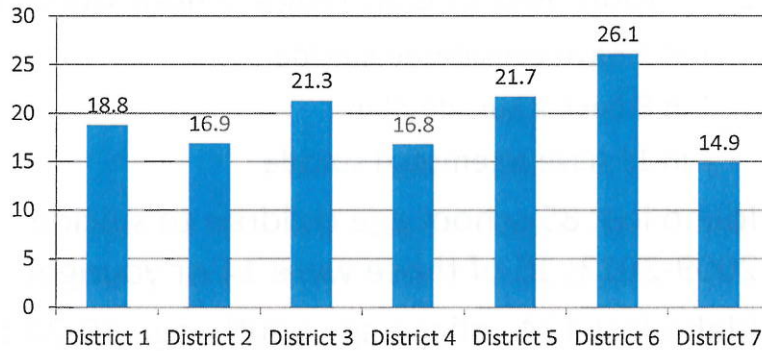
- 2013 Youth RBS of Idaho High School students
 - 1 in 7 have considered suicide
 - 1 in 8 have a suicide plan
 - 1 in 13 have attempted suicide
- Idaho lost 85 school age children to suicide 2009-2013; 15 of those were 14 or younger
- Idaho lost 134 college age youth, age 19-24 to suicide 2009-2013

Idaho Suicides Rates by Age (rate per 100,000)



Rate per 100,000. Source: Bureau of Vital Records and Health Statistics, 2013 data

Total Idaho Suicides by Public Health District (rate per 100,000)



Rate per 100,000. Source: Bureau of Vital Records and Health Statistics, 2013 data

IDAHO RESIDENT DEATHS Leading Causes of Death to Idahoans Cause-Specific Crude and Age-Adjusted Rates 2013 Idaho and 2012 U.S.

RANK FOR IDAHO AND CAUSE OF DEATH	DEATHS		DEATH RATES ¹			
			Crude		Age-Adjusted ²	
	Number	Percent	Idaho ³	U.S. ⁴ 2012	Idaho ³	U.S. ⁴ 2012
ALL CAUSES	12,420	100.0%	770.8	510.2	730.2	730.8
1. Malignant neoplasms (cancer)	2,700	21.8%	168.0	185.6	156.9	168.9
2. Diseases of heart	2,459	20.0%	154.4	191.6	145.0	178.5
3. Chronic lower respiratory diseases	806	6.5%	53.0	45.7	48.5	41.5
4. Accidents (unintentional injury)	777	6.3%	48.2	40.7	47.7	38.1
5. Cerebrovascular diseases	600	4.9%	37.2	40.9	35.5	36.9
6. Diabetes mellitus	480	3.9%	34.8	23.6	23.9	21.2
7. Alzheimer's disease	348	2.8%	21.8	26.8	21.0	29.8
8. Intentional self-harm (suicide)	308	2.5%	19.1	12.9	18.2	12.6
9. Influenza and pneumonia	250	2.1%	16.1	16.1	16.1	14.4
10. Chronic liver disease and cirrhosis	212	1.7%	13.2	11.1	11.9	9.9
11. Nephritis, nephrotic syndrome and nephrosis	148	1.2%	9.2	14.5	8.8	13.1
12. Parkinson's disease	143	1.2%	8.9	7.6	8.9	7.0
13. Essential hypertension & hypertensive renal disease	134	1.1%	8.3	9.9	7.9	8.2
14. Sepsis	98	0.8%	6.0	11.4	5.6	10.3
15. Pneumonitis due to solids and liquids	80	0.7%	5.5	5.7	5.3	5.1
All other causes	2,900	23.4%	NA	NA	NA	NA

1. Rates are per 100,000 population.
 2. Age-adjusted rates are artificial measures developed to eliminate the bias inherent in differing age compositions, thus allowing comparisons between geographic regions. Idaho and U.S. age-adjusted rates were calculated using the 2000 U.S. population estimate on the standard population.
 3. Idaho rates are based on the July 1, 2013 population estimates.
 4. U.S. crude and age-adjusted rates are 2012 final for leading causes of death.
 Rates are calculated using the 2000 Census.
 NA: Age-adjusted rates not calculated for causes with fewer than 20 deaths; crude and age-adjusted rates not applicable for all other causes.

IDAHO RESIDENT DEATHS
Leading Causes of Death to Idahoans by Sex
Cause-Specific Crude and Age-Adjusted Rates¹
2013 Idaho and 2012 U.S.

RANK FOR IDAHO AND CAUSE OF DEATH	MALES					
	Deaths		Crude Rate		Age-Adjusted ²	
	Number	Percent	Idaho ³	U.S. ⁴	Idaho ³	U.S. ⁴
ALL CAUSES	6,402	100.0%	793.2	824.5	834.7	805.1
1. Malignant neoplasms (cancer)	1,442	22.5%	178.7	197.9	181.5	200.3
2. Diseases of heart	1,253	21.1%	157.0	202.3	178.2	214.7
3. Accidents (unintentional injury)	454	7.2%	57.5	51.5	58.4	52.6
4. Chronic lower respiratory diseases	359	5.6%	44.4	43.8	51.3	47.2
5. Cerebrovascular diseases	287	4.5%	35.1	34.1	35.8	37.1
6. Intentional self-harm (suicide)	214	3.3%	26.2	26.8	32.7	22.4
7. Diabetes mellitus	227	3.5%	28.1	28.0	28.7	25.6
8. Chronic liver disease and cirrhosis	145	2.3%	18.0	14.6	18.0	13.4
9. Influenza and pneumonia	119	1.9%	14.7	15.5	16.5	17.3
10. Alzheimer's disease	117	1.8%	14.5	16.6	17.4	19.8
11. Parkinson's disease	89	1.4%	11.0	9.1	12.8	10.7
12. Nephritis, nephrotic syndrome and nephrosis	80	1.2%	9.9	14.7	11.4	16.0
13. Essential hypertension & hypertensive renal disease	59	0.9%	7.3	7.7	8.2	8.2
14. Pneumonitis due to solids and liquids	51	0.8%	6.3	6.3	7.2	7.1
15. Septicemia	47	0.7%	5.8	10.8	5.8	11.4
All other causes	1,290	20.3%	NA	NA	NA	NA

RANK FOR IDAHO AND CAUSE OF DEATH	FEMALES					
	Deaths		Crude Rate		Age-Adjusted ²	
	Number	Percent	Idaho ³	U.S. ⁴	Idaho ³	U.S. ⁴
ALL CAUSES	6,024	100.0%	748.3	796.4	638.0	624.7
1. Malignant neoplasms (cancer)	1,250	21.0%	157.4	173.7	135.3	142.1
2. Diseases of heart	1,120	18.8%	141.1	183.2	118.5	125.5
3. Chronic lower respiratory diseases	497	8.3%	60.8	47.8	43.2	37.8
4. Cerebrovascular diseases	333	5.5%	41.4	47.8	34.2	38.1
5. Accidents (unintentional injury)	313	5.2%	38.9	30.0	35.7	28.4
6. Alzheimer's disease	231	3.8%	28.7	38.4	23.0	28.1
7. Diabetes mellitus	173	2.9%	21.5	22.2	18.8	17.7
8. Influenza and pneumonia	140	2.3%	17.4	18.7	14.0	12.5
9. Essential hypertension & hypertensive renal disease	75	1.2%	9.3	10.8	7.4	8.0
10. Nephritis, nephrotic syndrome and nephrosis	66	1.1%	8.4	14.4	7.2	11.1
11. Chronic liver disease and cirrhosis	67	1.1%	8.3	7.8	7.5	6.7
12. Intentional self-harm (suicide)	64	1.1%	7.9	6.5	8.0	6.4
13. Parkinson's disease	54	0.9%	6.7	6.1	5.9	4.7
14. Septicemia	40	0.7%	6.1	12.8	5.2	6.5
15. Pneumonitis due to solids and liquids	38	0.6%	4.7	6.1	3.8	3.9
All other causes	1,609	26.7%	NA	NA	NA	NA

IDAHO RESIDENT DEATHS
Ten Leading Causes of Death by Age Group and Number of Deaths
2013

RANK	AGE GROUP											ALL AGES	
	<1	1-4	5-9	10-14	15-19	20-24	25-34	35-44	45-54	55-64	65-74		75+
1	Congenital malformations (20)	Accident (16) (Trans: 6 MVA: 6 All Other: 6)	Accident (7) (Trans: 4 MVA: 4 All Other: 3)	Accident (9) (Trans: 4 MVA: 4 All Other: 5)	Accident (24) (Trans: 17 MVA: 17 All Other: 7)	Accident (49) (Trans: 32 MVA: 31 All Other: 17)	Accident (82) (Trans: 41 MVA: 35 All Other: 41)	Accident (69) (Trans: 32 MVA: 27 All Other: 34)	Malignant neoplasms (194)	Malignant neoplasms (302)	Malignant neoplasms (719)	Diseases of heart (1,655)	Malignant neoplasms (2,788)
2	Distal gastric and low bile weight (21)	Assault (homicide) (9)	(7) Malignant neoplasms; Septicemia (2 each)	(7) Malignant neoplasms	(21) Intentional self-harm (Suicide)	(26) Intentional self-harm (Suicide)	(48) Intentional self-harm (Suicide)	(52) Malignant neoplasms	Diseases of heart (116)	Diseases of heart (285)	Diseases of heart (429)	Malignant neoplasms (1,216)	Diseases of heart (2,489)
3	Sudden Infant Death Syndrome (15)	(7) Chronic lower respiratory diseases	(2) each Malignant neoplasms; Septicemia	(2) each Intentional self-harm (Suicide); Malignant neoplasms	Diseases of heart (2)	Malignant neoplasms (7)	Diseases of heart (16)	Intentional self-harm (Suicide) (41)	Accident (114) (Trans: 48 MVA: 44 All Other: 56)	Accident (103) (Trans: 43 MVA: 36 All Other: 62)	Chronic lower respiratory diseases (232)	Chronic lower respiratory diseases (446)	Chronic lower respiratory diseases (806)
4	Coronctions of placenta, cord & membranes (11)	(7) Chronic lower respiratory diseases; Pneumonitis due to solids and liquids; Influenza and pneumonia (1 each)	(7) Intentional self-harm (Suicide)	(7) Congenital malformations; Malignant neoplasms; Assault	(5) Assault (homicide)	(13) Malignant neoplasms	(34) Diseases of heart	(65) Chronic lower respiratory diseases	(101) Chronic lower respiratory diseases	(232) Chronic lower respiratory diseases	(232) Chronic lower respiratory diseases	(442) Chronic lower respiratory diseases	Accident (777) (Trans: 280 MVA: 218 All Other: 477)
5	Maternal complications of pregnancy (7)	(1) each Accident (5) MVA: 1 All Other: 4)	(1) each Influenza and pneumonia; Congenital malformations	(1) each Influenza and pneumonia	(1) each Congenital malformations; Malignant neoplasms; Assault	(5) Diseases of heart	(5) Chronic liver disease and cirrhosis	(15) Diabetes mellitus	(52) Chronic liver disease and cirrhosis	(52) Chronic liver disease and cirrhosis	(54) Cerebrovascular diseases	(204) Alzheimer's disease	Cerebrovascular diseases (602)
6	Accident (9) (Trans: 1 MVA: 1 All Other: 4)	(1) each Accident (5) MVA: 1 All Other: 4)	(1) each Influenza and pneumonia; Congenital malformations	(1) each Influenza and pneumonia	(1) each Congenital malformations; Malignant neoplasms; Assault	(5) Diabetes mellitus	(5) Chronic liver disease and cirrhosis	(14) Chronic liver disease and cirrhosis	(52) Chronic liver disease and cirrhosis	(52) Chronic liver disease and cirrhosis	(54) Cerebrovascular diseases	(204) Alzheimer's disease	Diabetes mellitus (402)
7	(7) Neonatal hemorrhage; Infantile hydrops and birth asphyxia (2 each)	(1) each Accident (5) MVA: 1 All Other: 4)	(1) each Influenza and pneumonia; Congenital malformations	(1) each Influenza and pneumonia	(1) each Congenital malformations; Malignant neoplasms; Assault	(5) Diabetes mellitus	(5) Chronic liver disease and cirrhosis	(14) Chronic liver disease and cirrhosis	(52) Chronic liver disease and cirrhosis	(52) Chronic liver disease and cirrhosis	(54) Cerebrovascular diseases	(204) Alzheimer's disease	Diabetes mellitus (402)
8	(7) Neonatal hemorrhage; Infantile hydrops and birth asphyxia (2 each)	(1) each Accident (5) MVA: 1 All Other: 4)	(1) each Influenza and pneumonia; Congenital malformations	(1) each Influenza and pneumonia	(1) each Congenital malformations; Malignant neoplasms; Assault	(5) Diabetes mellitus	(5) Chronic liver disease and cirrhosis	(14) Chronic liver disease and cirrhosis	(52) Chronic liver disease and cirrhosis	(52) Chronic liver disease and cirrhosis	(54) Cerebrovascular diseases	(204) Alzheimer's disease	Diabetes mellitus (402)
9	(7) Neonatal hemorrhage; Infantile hydrops and birth asphyxia (2 each)	(1) each Accident (5) MVA: 1 All Other: 4)	(1) each Influenza and pneumonia; Congenital malformations	(1) each Influenza and pneumonia	(1) each Congenital malformations; Malignant neoplasms; Assault	(5) Diabetes mellitus	(5) Chronic liver disease and cirrhosis	(14) Chronic liver disease and cirrhosis	(52) Chronic liver disease and cirrhosis	(52) Chronic liver disease and cirrhosis	(54) Cerebrovascular diseases	(204) Alzheimer's disease	Diabetes mellitus (402)
10	(7) Neonatal hemorrhage; Infantile hydrops and birth asphyxia (2 each)	(1) each Accident (5) MVA: 1 All Other: 4)	(1) each Influenza and pneumonia; Congenital malformations	(1) each Influenza and pneumonia	(1) each Congenital malformations; Malignant neoplasms; Assault	(5) Diabetes mellitus	(5) Chronic liver disease and cirrhosis	(14) Chronic liver disease and cirrhosis	(52) Chronic liver disease and cirrhosis	(52) Chronic liver disease and cirrhosis	(54) Cerebrovascular diseases	(204) Alzheimer's disease	Diabetes mellitus (402)
Residual ¹	28	3	3	3	2	8	38	58	169	301	476	2,851	3,816
Total	125	24	16	16	33	63	216	321	787	1,558	2,328	6,541	12,255

Note: Number of deaths in parentheses. Accident is a shortened ICD-10 title for "Accident (unintentional injury)". Trans is short for "Transportation Accident". MVA is short for "Motor Vehicle Accident".
 1. Residual: Total number of deaths for all other leading causes not listed and all other causes not ranked for leading cause of death.
 2. The at rank 9 for = 1: Neonium affected by other maternal conditions; influenza and pneumonia; rhydrop; Diarrhea and gastroenteritis of presumed infectious origin; Assault (homicide) (2 each).
 3. The at rank 10 for aged 25-34: Pneumonia; Chronic lower respiratory diseases; influenza and pneumonia; Nephritis, nephrotic syndrome and nephrosis; Nephritis, nephrotic syndrome and nephrosis; Congenital malformation (1 each).

IDAHO MALE RESIDENT DEATHS Ten Leading Causes of Death by Age Group and Number of Deaths 2013

RANK	AGE GROUP										ALL AGES		
	<1	1-4	5-9	10-14	15-19	20-24	25-34	35-44	45-54	55-64		65-74	75+
1	Congenital malformations: Sudden infant death syndrome; chest constriction and low birth weight (12)	Accidents (9) (Trans: 4 MVA; 4 All other)	Accidents (6) (Trans: 1 MVA; 1 All other)	Accidents (8) (Trans: 3 MVA; 3 All other)	(Tie) Accidents (10) (Trans: 6 MVA; 4 All other)	Accidents (14) (Trans: 23 MVA; 21 All other)	Accidents (65) (Trans: 34 MVA; 22 All other)	Accidents (89) (Trans: 29 MVA; 26 All other)	Malignant neoplasms (90)	Malignant neoplasms (82)	Malignant neoplasms (371)	Diseases of heart (74)	Malignant neoplasms (1,442)
2	Short gestation and low birth weight (12)	Assault (Homicide) (2)		Intentional self-harm (Suicide) (2)	Intentional self-harm (Suicide) (14 each)	Intentional self-harm (Suicide) (21)	Intentional self-harm (Suicide) (14)	Malignant neoplasms (32)	Diseases of heart (80)	Diseases of heart (209)	Diseases of heart (275)	Malignant neoplasms (83)	Diseases of heart (1,353)
3						Malignant neoplasms (9)	Diseases of heart (9)	Intentional self-harm (Suicide) (13)	Accidents (75) (Trans: 35 MVA; 20 All other)	Accidents (74) (Trans: 38 MVA; 21 All other)	Chronic lower respiratory diseases (116)	Chronic lower respiratory diseases (115)	Accidents (164) (Trans: 200 MVA; 183 All other)
4	Complications of pneumonia, cord & membranes (19)					Assault (Homicide) (4)	Malignant neoplasms (7)	Diseases of heart (26)	Chronic liver disease and cirrhosis (8)	Diabetes mellitus (14)	Chronic lower respiratory diseases (37)	Chronic lower respiratory diseases (142)	Chronic lower respiratory diseases (339)
5	Maternal complications of pregnancy (8)					Diseases of heart (2)	Chronic liver disease and cirrhosis (8)	Diabetes mellitus (14)	Chronic liver disease and cirrhosis (32)	Chronic lower respiratory diseases (55)	Accidents (74) (Trans: 23 MVA; 21 All other)	Alzheimer's disease (167)	Chronic lower respiratory diseases (297)
6	Accidents (3) (Trans: 0 MVA; 0 All other)						Assault (Homicide) (9)	Chronic liver disease and cirrhosis (10)	Diabetes mellitus (17)	Diabetes mellitus (49)	Chronic lower respiratory diseases (61)	Alzheimer's disease (11)	Chronic lower respiratory diseases (244)
7	(Tie) Neonatal hemorrhagic intracranial hemorrhage and birth asphyxia (2 each)						(Tie) Diabetes mellitus (1 each)	Chronic liver disease and cirrhosis (10)	Chronic lower respiratory diseases (11)	Intentional self-harm (Suicide) (32)	Intentional self-harm (Suicide) (32)	Diabetes mellitus (34)	Diabetes mellitus (227)
8							(Tie) Viral hepatitis: Congenital rubella infections (2 each)	Chronic lower respiratory diseases (9)	Chronic lower respiratory diseases (9)	Chronic lower respiratory diseases (28)	Chronic liver disease and cirrhosis (28)	Influenza and pneumonia (81)	Chronic liver disease and cirrhosis (140)
9								Viral hepatitis (7)	Viral hepatitis (25)	Septicemia (15)	Parkinson's disease (76)	Influenza and pneumonia (119)	
10								Influenza and pneumonia (9)	Influenza and pneumonia (14)	Influenza and pneumonia (14)	Neoplasms, neoplastic systems (22)	Alzheimer's disease (17)	
Residual	50	6	4	3	3	9	21	20	16	174	201	884	2,024
Total	76	16	8	12	21	71	100	208	409	1,619	1,282	3,123	8,402

IDAHO FEMALE RESIDENT DEATHS Ten Leading Causes of Death by Age Group and Number of Deaths 2013

RANK	AGE GROUP										ALL AGES		
	<1	1-4	5-9	10-14	15-19	20-24	25-34	35-44	45-54	55-64		65-74	75+
1	Congenital malformations (33)	Accidents (8) (Trans: 2 MVA; 2 All other)	Accidents (3) (Trans: 3 MVA; 0 All other)		Accidents (10) (Trans: 8 MVA; 2 All other)	Accidents (16) (Trans: 10 MVA; 6 All other)	Accidents (27) (Trans: 17 MVA; 10 All other)	Accidents (49) (Trans: 3 MVA; 2 All other)	Malignant neoplasms (70)	Malignant neoplasms (58)	Malignant neoplasms (148)	Diseases of heart (62)	Malignant neoplasms (1,587)
2	Short gestation and low birth weight (9)		(Tie) Malignant neoplasms; Septicemia (2 each)		Intentional self-harm (Suicide) (7)	Intentional self-harm (Suicide) (9)	Diseases of heart (7)	Malignant neoplasms (26)	Accidents (28) (Trans: 10 MVA; 9 All other)	Diseases of heart (7)	Diseases of heart (147)	Malignant neoplasms (363)	Diseases of heart (1,120)
3	Sudden infant death syndrome (3)					(Tie) Diseases of heart; Malignant neoplasms; Assault (Homicide) (2 each)	Malignant neoplasms (5)	Intentional self-harm (Suicide) (15)	Diseases of heart (36)	Chronic lower respiratory diseases (46)	Chronic lower respiratory diseases (116)	Chronic lower respiratory diseases (260)	Chronic lower respiratory diseases (627)
4	(Tie) Accidents; Maternal complications of pregnancy; Neonatal; Infants affected by other maternal conditions; Assault (Homicide) (2 each)						Pregnancy, childbirth, and the puerperium (2)	Diseases of heart (8)	Chronic liver disease and cirrhosis (11)	Chronic liver disease and cirrhosis (21)	Accidents (28) (Trans: 7 MVA; 6 All other)	Chronic lower respiratory diseases (143)	Chronic lower respiratory diseases (333)
5								(Tie) Chronic liver disease and cirrhosis (11)	Chronic liver disease and cirrhosis (21)	Chronic liver disease and cirrhosis (21)	Diabetes mellitus (38)	Alzheimer's disease (217)	Accidents (313) (Trans: 90 MVA; 78 All other)
6								Chronic liver disease and cirrhosis (11)	Chronic lower respiratory diseases (11)	Cerebrovascular diseases (17)	Accidents (32) (Trans: 10 MVA; 10 All other)	Alzheimer's disease (105)	Alzheimer's disease (231)
7								Cerebrovascular diseases (5)	(Tie) Diabetes mellitus; Cerebrovascular diseases (10 each)	Diabetes mellitus (16)	Influenza and pneumonia (19)	Influenza and pneumonia (187)	Diabetes mellitus (173)
8								(Tie) Chronic liver disease and cirrhosis (10 each)	Chronic lower respiratory diseases (10)	Intentional self-harm (Suicide) (13)	Nephritis, nephrotic syndrome (15)	Diabetes mellitus (105)	Influenza and pneumonia (140)
9								Viral hepatitis (5)	Influenza and pneumonia (11)	Influenza and pneumonia (11)	Chronic lower respiratory diseases (13)	Hypertension (70)	Hypertension (70)
10								Pregnancy, childbirth, and the puerperium (2 each)	(Tie) (3 each)	Nephritis, nephrotic syndrome (9)	Alzheimer's disease (48)	Polycystic ovary syndrome (8)	Nephritis, nephrotic syndrome (66)
Residual	16	2	1	3	5	8	20	20	12	168	1,247	1,861	5,024
Total	51	8	8	3	20	35	63	116	329	896	660	3,518	9,024

Ten Leading Causes of Death, United States 2013, All Races, Both Sexes

		Age group						
		10-14	15-24	25-34	35-44	45-54	55-64	65+
Ranking	1	Unintentional Injury 775	Unintentional Injury 11,619	Unintentional Injury 16,209	Unintentional Injury 15,354	Malignant Neoplasms 46,185	Malignant Neoplasms 113,324	Heart Disease 488,156
	2	Malignant Neoplasms 448	Suicide 4,878	Suicide 6,345	Malignant Neoplasms 11,349	Heart Disease 35,167	Heart Disease 72,563	Malignant Neoplasms 407,559
	3	Suicide 386	Homicide 4,329	Homicide 4,236	Heart Disease 10,341	Unintentional Injury 20,357	Unintentional Injury 17,057	Chronic Low Respiratory Disease 127,194
	4	Congenital Anomalies 161	Malignant Neoplasms 1,486	Malignant Neoplasms 3,673	Suicide 6,551	Liver Disease 6,785	Chronic Low Respiratory Disease 15,942	Cerebrovascular 109,602
	5	Homicide 152	Heart Disease 941	Heart Disease 3,256	Homicide 2,581	Suicide 8,621	Diabetes Mellitus 13,061	Alzheimer's Disease 83,786
	6	Heart Disease 100	Congenital Anomalies 362	Diabetes Mellitus 684	Liver Disease 2,491	Diabetes Mellitus 5,999	Liver Disease 11,951	Diabetes Mellitus 53,751
	7	Chronic Low Respiratory Disease 80	Influenza & Pneumonia 197	Liver Disease 676	Diabetes Mellitus 1,952	Cerebrovascular 5,425	Cerebrovascular 11,364	Influenza & Pneumonia 48,031
	8	Influenza & Pneumonia 61	Diabetes Mellitus 153	HIV 631	Cerebrovascular 1,657	Chronic Low Respiratory Disease 4,619	Suicide 7,135	Unintentional Injury 45,942
	9	Cerebrovascular 48	Complicated pregnancy 176	Cerebrovascular 506	HIV 1,245	Sepsis 2,445	Sepsis 5,345	Nephritis 39,060
	10	Benign Neoplasms 31	Chronic Low Respiratory Disease 155	Influenza & Pneumonia 449	Influenza & Pneumonia 651	HIV 2,375	Nephritis 4,947	Sepsis 28,815

Source: WISQARS Leading Causes of Death Reports: 1999-2013

SCR 104

- Charged the HQPC to prepare an implementation plan for a comprehensive suicide prevention program such as the ISPP as published by the ICSP.
- Subgroup of ICSP, HQPC, and other leaders in suicide prevention meeting now to select the prevention methods most likely to succeed and the infrastructure necessary to improve
- Looking at 5 broad categories of interventions
- Potential alignment with the SHIP work
- Tentative vision: become the state with the lowest suicide rate in 5 years