

Idaho State Historical Society
Senate Education Committee

February 7, 2017
3:00pm

State Historical Museum and its
Educational Impact



Idaho State Historical Society
Founded 1881—State Agency 1907

- Mission: Preserve and promote Idaho's history
- Vision: Use cultural resources to inform the future
- 74 statutory mandates
- Enhance applied and informal learning



Agency Highlights

Idaho State Historical Society one of twenty-two states that uses a full purpose agency structure

- State Historic Preservation Office HP Act 54 U.S.C. § 300101 et seq
- State Archives and State Records Center Title 67-4126
- State Museum and State Historic Sites Title 67-4126
- Administration Title 67-4126

- Board appointed by Governor
- Non-state sources provide 50% of budget



Idaho students at National History Day



ISHS Delivers Essential Services

- Provide information and understanding
- Give an Idaho voice to federal decision making
- Advance historical and civic literacy, build 21st century skills, and directly supports schools
- Preserve and protect the state's irreplaceable legacy collections



History is Moving, History is Growing, History is Changing

Idaho State Historical Museum Expansion

The Idaho State Historical Society is renovating and expanding the Idaho State Historical Museum and developing world-class exhibitions that inspire learning and invite an engaged discussion of Idaho's past and its impact today.



1907



1950



1980



Project Goals

- ***To repair*** dated infrastructure
- ***To respond*** to public demand
- ***To create*** comprehensive, new exhibitions



Project Impact

- ***Engage Idahoans*** in Idaho's history and the **context** history provides for our lives today
- ***Create*** an essential resource for **education**
- ***Contribute*** to the **economic vitality** of our state



Project Impact

- ***Engage Idahoans*** and create context
- ***Ensure Relevance***
 - Invite input into exhibition content, experiences, and outreach
 - Use data to inform exhibition design
 - Use technology to take museum to the state



Project Impact

- ***Create*** an essential resource for **education**
- ***Build skills***
 - Historical literacy
 - Critical thinking and problem-solving
 - Cross-disciplinary and self-directed learning



Project Impact

- ***Contribute*** to the **economic vitality** of our state
- ***Grow destination potential of the state***

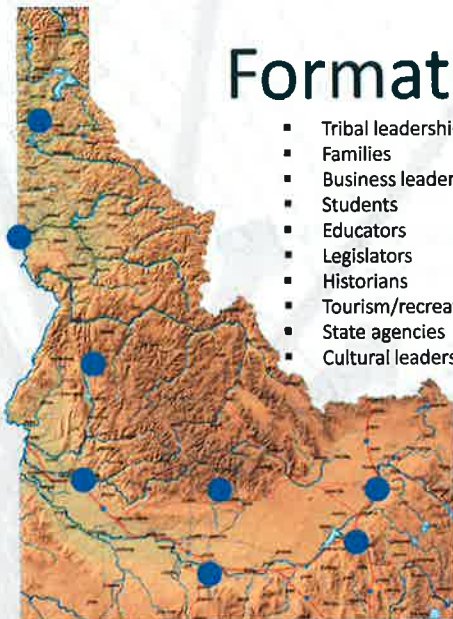


Statewide engagement 2014-2016

- Tribal partnership with Idaho's five recognized tribes
- Executive Branch Agencies
- JFAC
- Teacher Advisory Council
- University Academics and Scholars across Idaho
- On-site interviews and focus groups
- Statewide electronic surveys
- Public Interviews



Formative Evaluation



- Tribal leadership
- Families
- Business leaders
- Students
- Educators
- Legislators
- Historians
- Tourism/recreation
- State agencies
- Cultural leaders

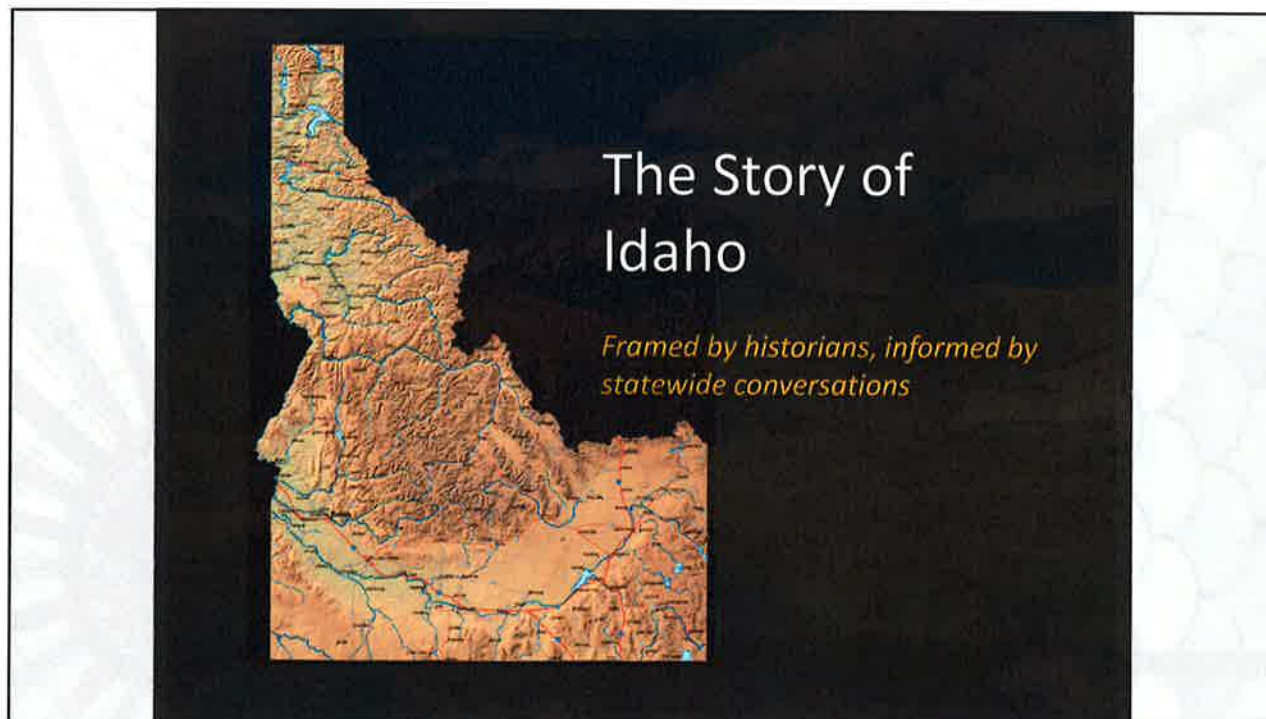
"I just wanted to commend you for your efforts. This is what I'm talking about, this is what I envision when tribe and state work together, the respect that you came out to all the reservations, worked with our staff, got good creation stories from all of our own people. It's very respectful, Mr. Chairman, and I commend it. It's the kind of relationship that I wish we could have in all our dealings, with mutual respect."

Chief Allan, chairman of the Coeur d'Alene Tribe



Results Summary 2014-2016

- Idahoans will visit our State Museum to learn about Idaho's Native People
- Participants expect to be educated in an entertaining fashion with interactives, sensory use, apps, games,
- 60% statewide want multi-media immersive experiences are worth the cost
- Idahoans want increased access to the State Museum and collections via technology
- The Idaho State Historical Society is expected to be fundamental to the educational mission of Idaho
- 94% say they will visit the Museum when it reopens



Educational Focus

- Historical Literacy
- Critical Thinking and Problem Solving
- Multi-Disciplinary Learning
- Self-Directed Learning and Creative Play
- K-12 audience



Educational Strategy

- **Researching** and modeling museum education best practices
- **Partnering** with Education Advisory Council
- **Providing** direct curriculum support
- **Aligning** to Idaho State Standards
- **Promoting** 21st Century skills
- **Offering** applied and informal learning opportunities, enhancing what is being taught in Idaho classrooms



Educators Summit 2016

- 30 participants
- Welcome by First Lady Lori Otter
- Range of disciplines and grade levels
- Day long work session which included presentations, animations, anonymous survey, and brainstorming sessions



Summit Results 2016

- Exhibition stories deemed useful for Idaho State Standards, Common Core Standards, and 21st century skills
- 96% of participants marked “important” or “very important” that students have an **emotional** as well as **intellectual** experience at the new museum; **teachers want to access what they cannot recreate in their classrooms**
- Educators responded that that 100% of exhibitions are relevant to all grade levels and it is multi-disciplinary in scope
- Teachers reported that STEM connections can be easily incorporated into exhibits.



Educational Program Priorities

On Site Programs

Virtual Programs

Teacher Professional Development



K-12 Student Field Trip Programs



Trading at the Pierre's Hole Rendezvous; Artist: Clark Kelley Price

Rendezvous



Transportation Station



Lewis the Science Guy



Virtual/Distance Programs and Resources



Online Primary Source Database



**Virtual Field Trips/
Lessons**



Traveling Trunks



Teacher Professional Development

- Online course for Professional Development available to teachers statewide in partnership with Idaho Digital Learning Academy
- Primer on using local and state historical societies and their resources to enhance curricular planning and meet Idaho state standards





Thank you!

- Visit Foundation for Idaho History to learn more
www.foundationforidahohistory.org
- Refer teachers from your districts to our website
www.history.idaho.gov



Governor C.L. “Butch” Otter

Janet L. Gallimore, Executive Director

Idaho State Historical Society Trustees

Don Pischner, District 1, Coeur d’Alene

Earl Bennett, District 2, Genesee

Bill Butticci, Chair, District 3, Emmett

Ernest Hoidal, District 4, Boise

Tom Blanchard, District 5, Bellevue

Jim Johnston, District 6, Pocatello

Hope Benedict, District 7, Salmon

Affiliate Boards

Foundation for Idaho History

Friends of the Historical Museum & Old Pen

State Historical Records Advisory Board

Friends of Stricker Ranch, Hansen, ID

Franklin Pioneer Association & the City of Franklin

J. Howard Bradbury Logging Museum & the City of Pierce

Historic Sites Review Board

Archaeological Survey of Idaho Board

Idaho Geographic Names Advisory Council

Governor’s Lewis and Clark Trail Committee



