



Idaho Wolf Management

Natural Resources Interim Committee

October 6, 2022

Ed Schriever, Director
Idaho Fish and Game Department

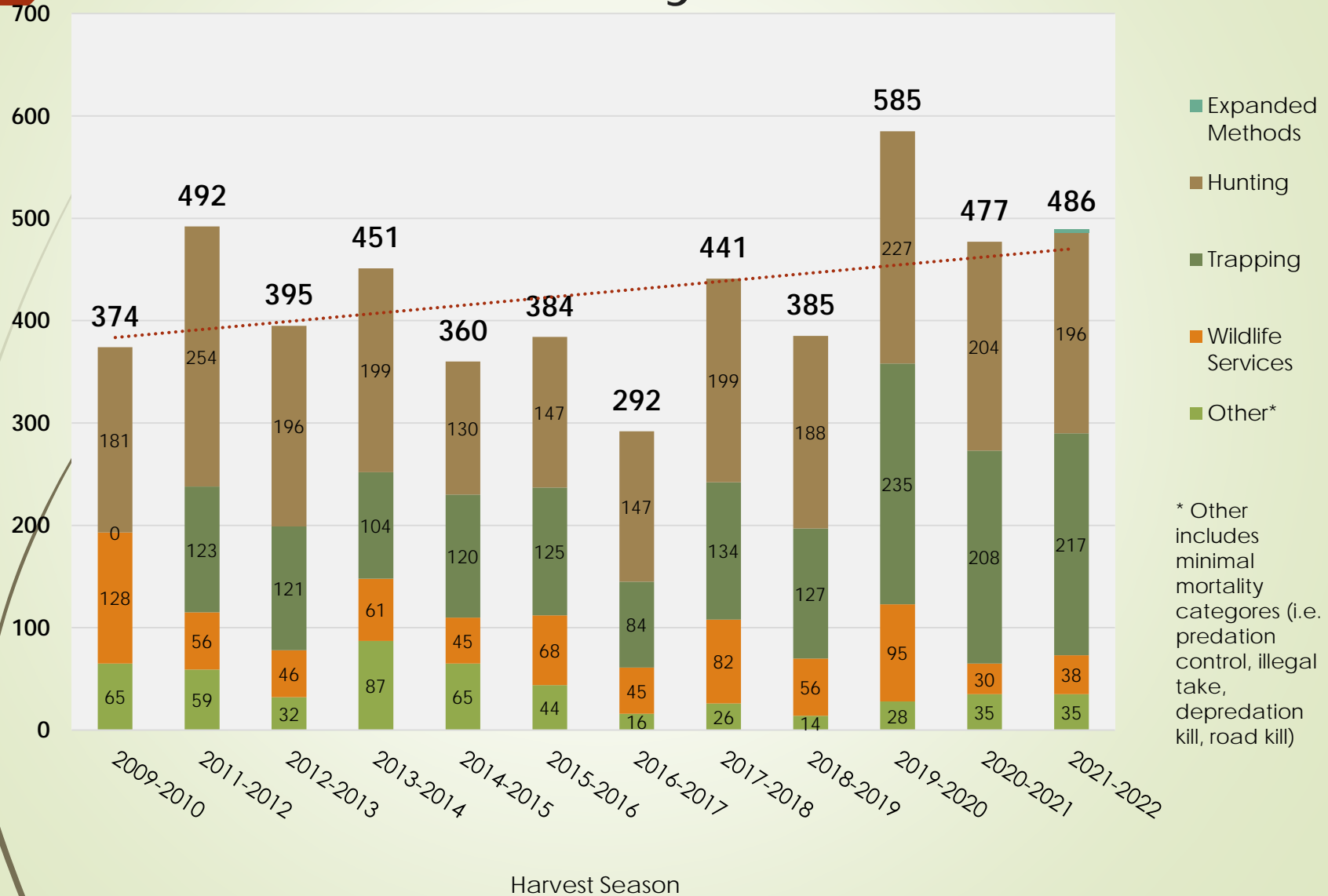
- Population Management
- Conflict Management

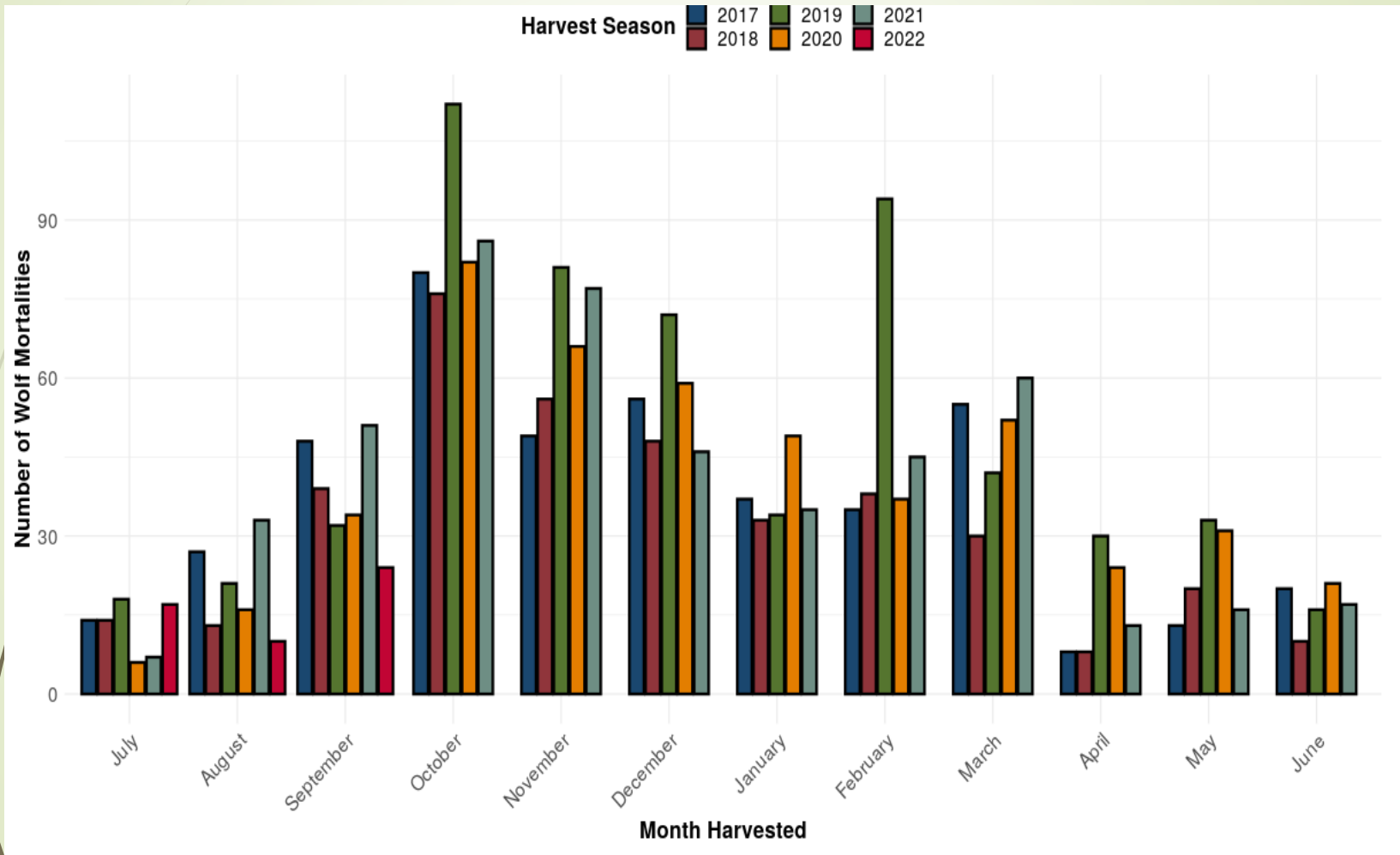
Population Management

- Hunting and Trapping framework – implemented provisions of S1211 (*expanded methods of take)
- Private Land – subject to landowner permission
 - Hunting open statewide, year-round - including expanded methods of take
 - Foot-hold trapping open statewide, year-round (law suit)
 - Snares – open same season as on public ground
- Public Land -Hunting
 - 66 GMU open year-round, 50 with expanded methods Nov 15 – April 30
 - 57 GMU open 11 months
- Public Land Trapping
 - 41 GMU foothold Sept 10 – Mar 31 (snares Nov 15 – Mar 31)
 - 51 GMU foothold Oct 10 – Mar 31 (snares Nov 15 – March 31)
 - 5 GMU foothold traps and snares Nov 15 – Mar 31 (G-bear units)

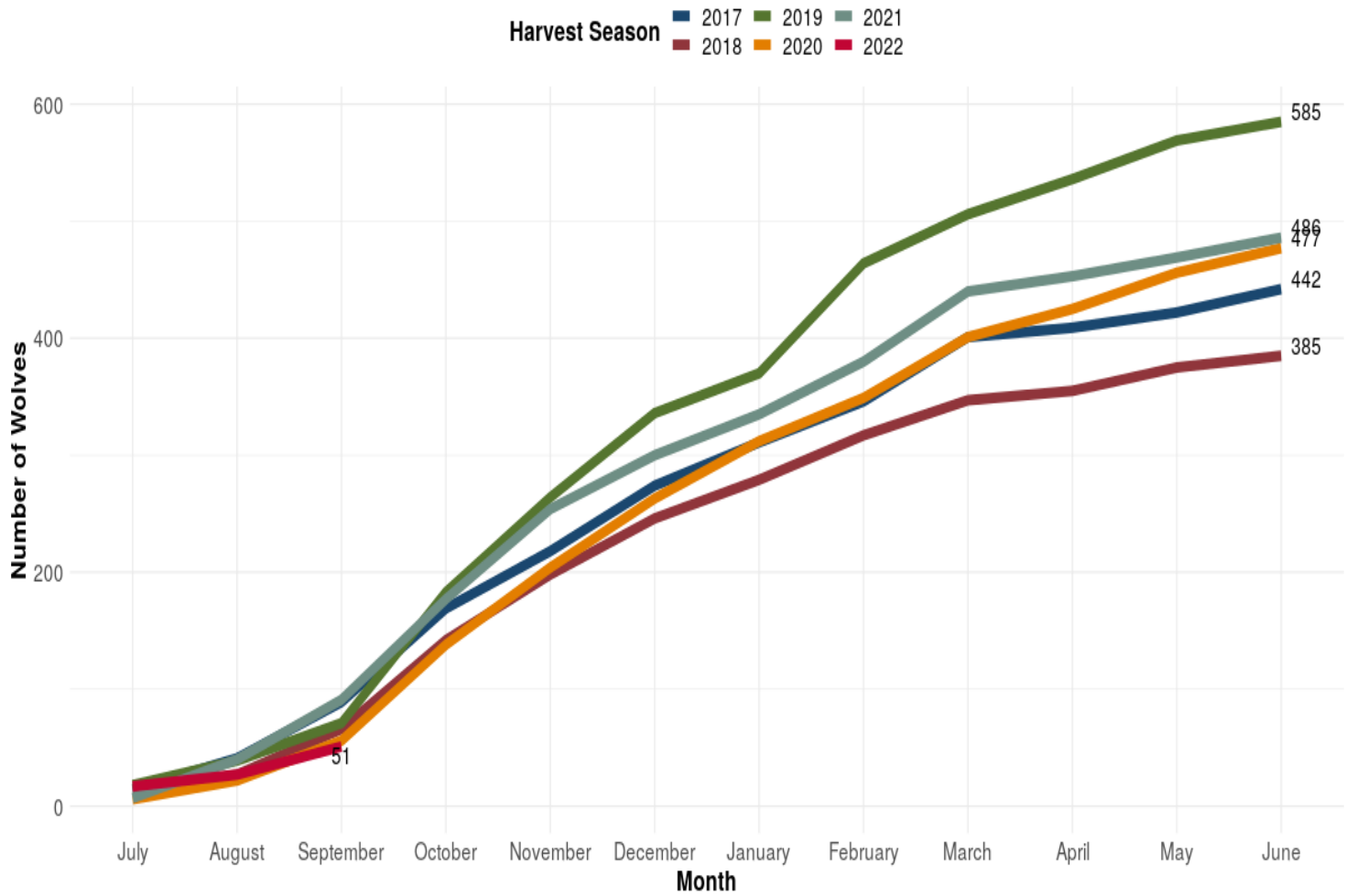
Harvest History

No. of wolf mortalities

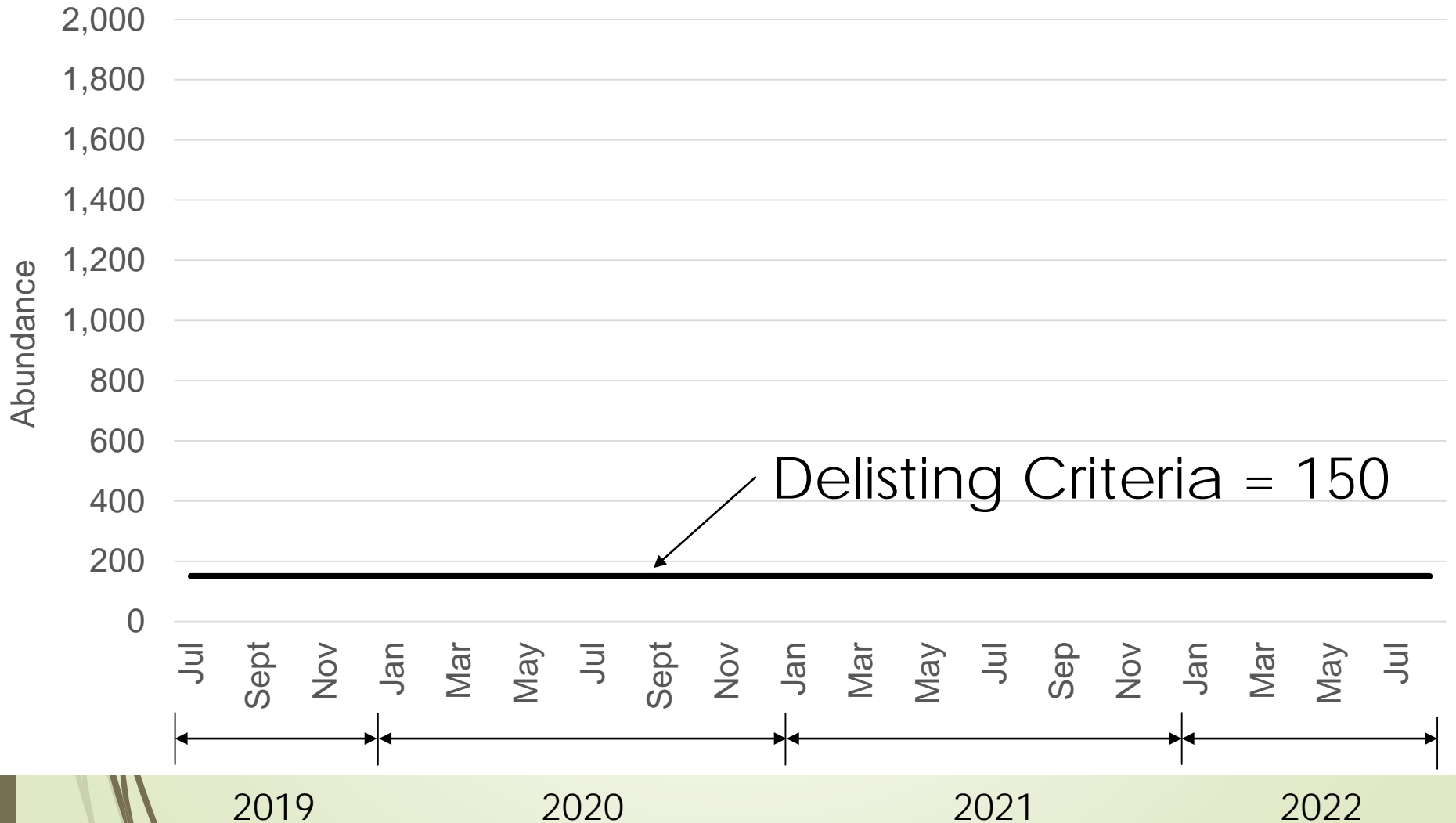




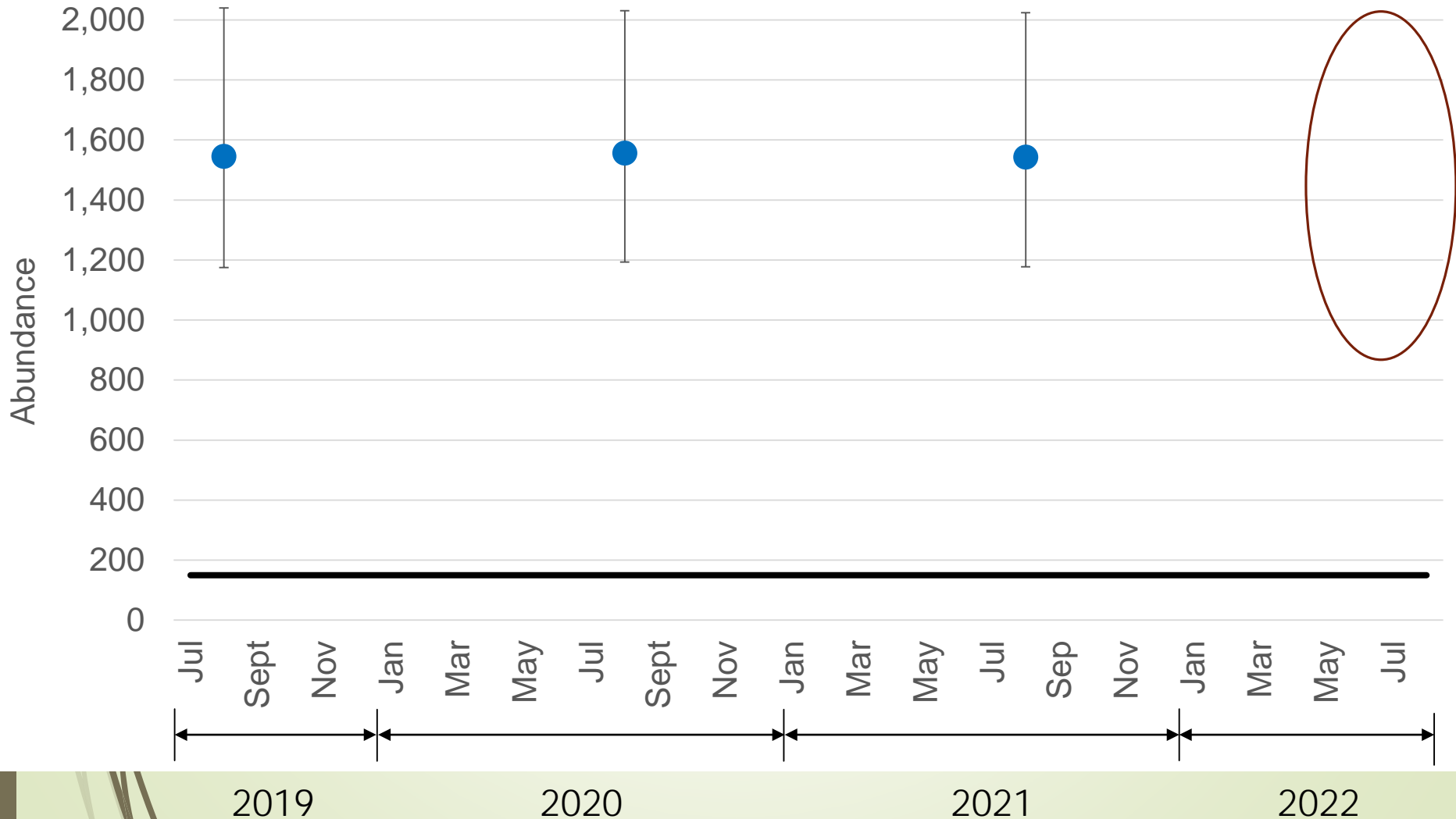
Cumulative Documented Wolf Mortality by Harvest Season July 1 - June 30



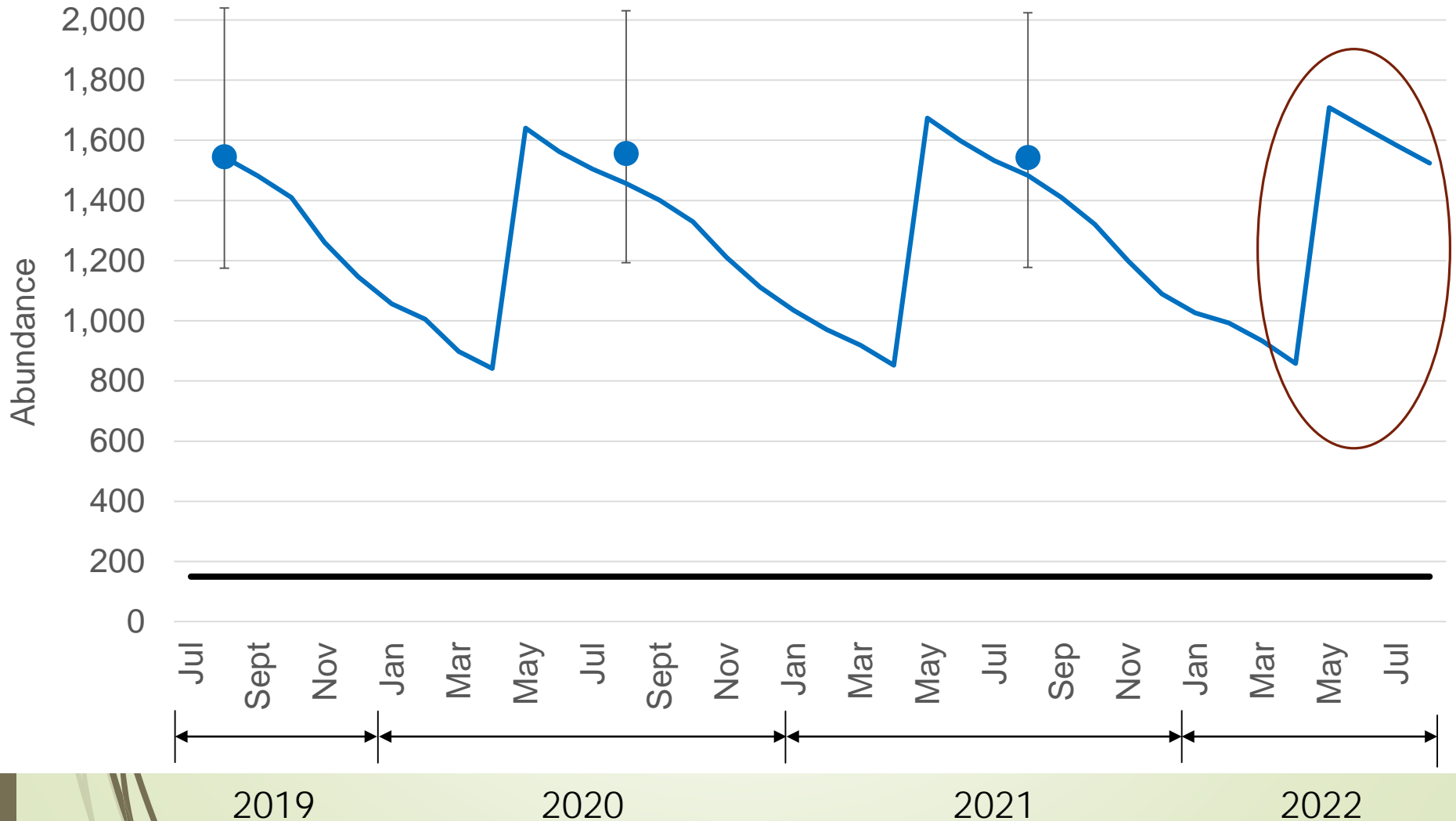
Seasonal Changes in Idaho Wolf Abundance



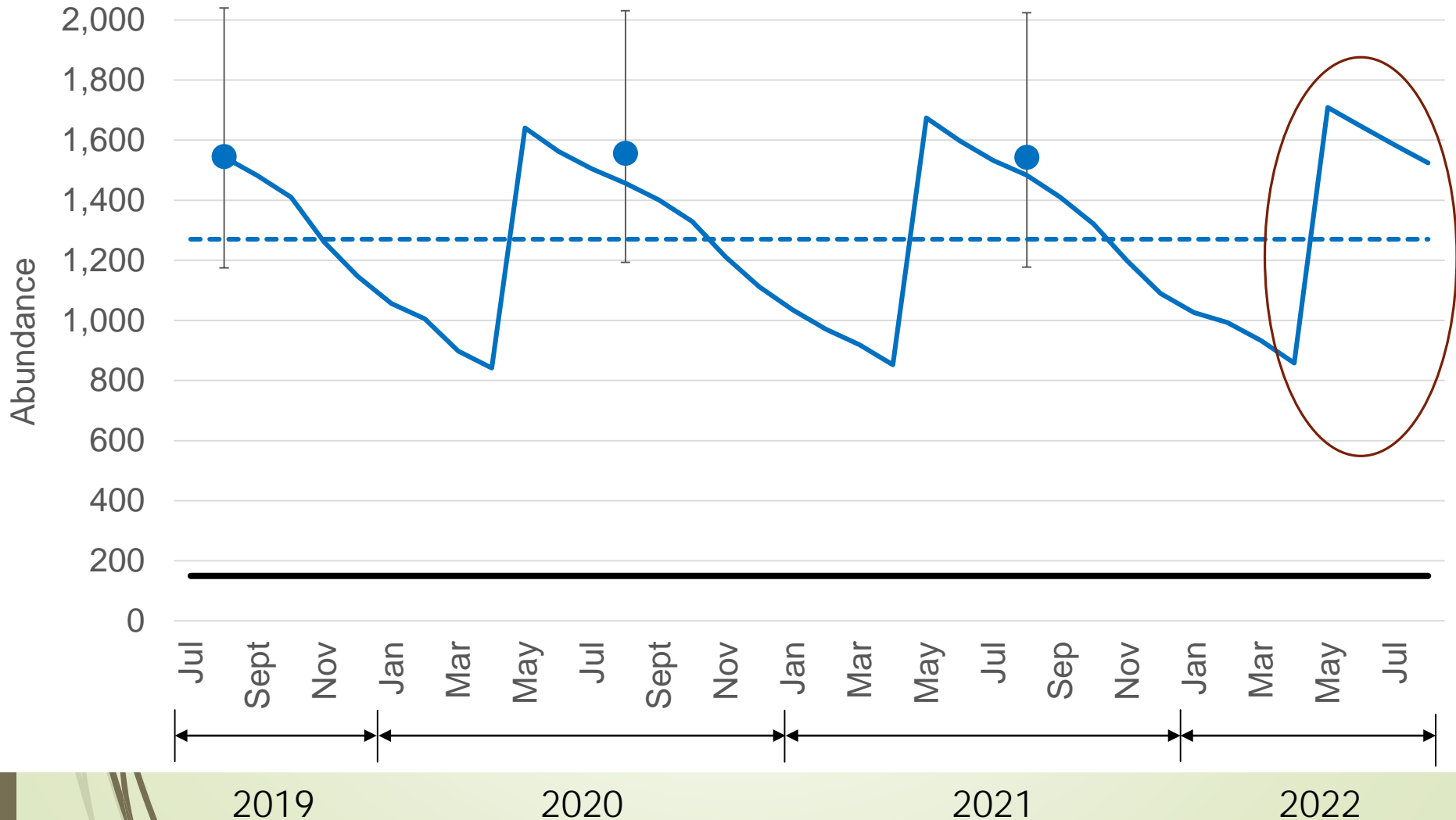
Seasonal Changes in Idaho Wolf Abundance



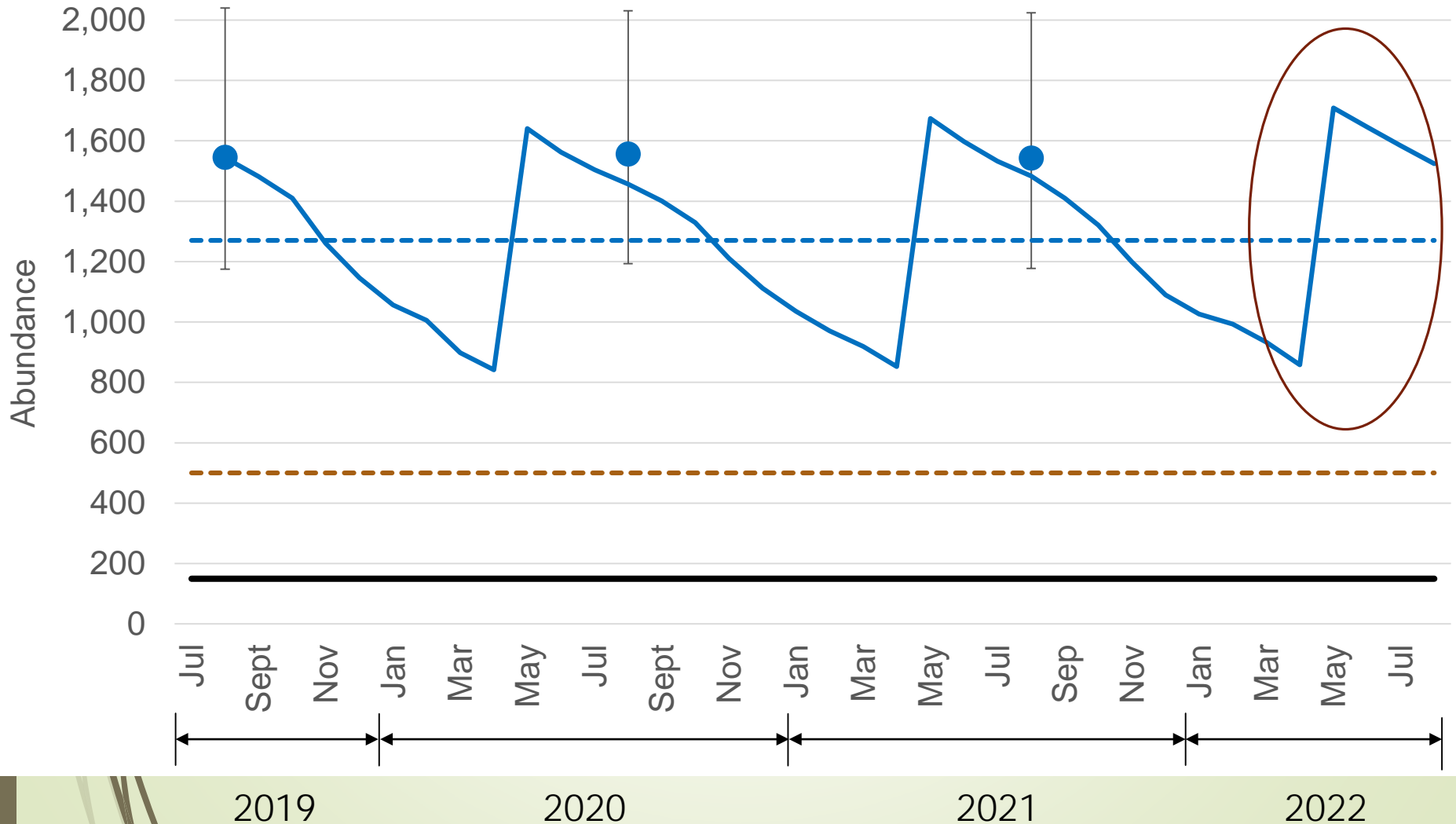
Seasonal Changes in Idaho Wolf Abundance



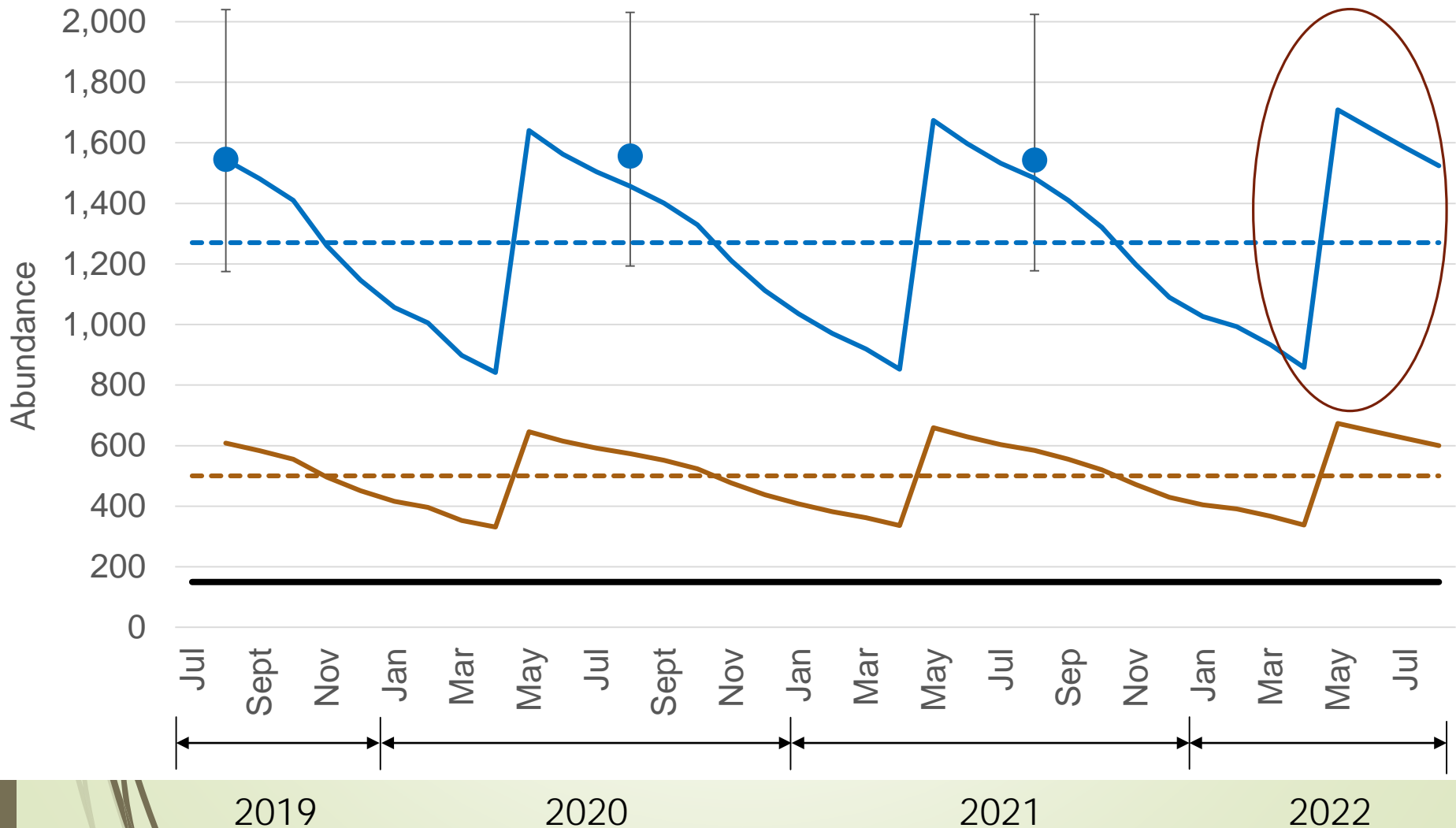
Seasonal Changes in Idaho Wolf Abundance



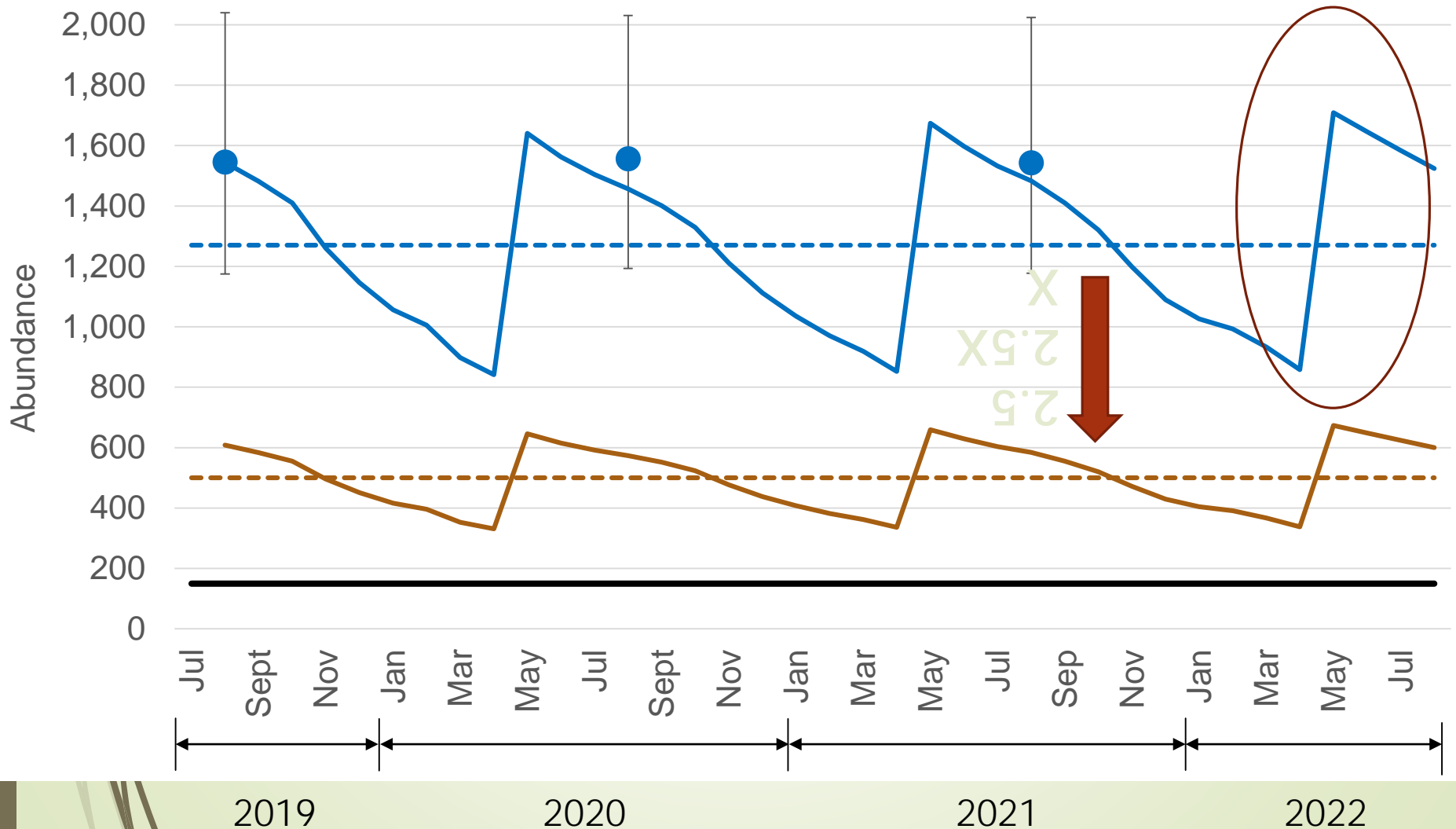
Seasonal Changes in Idaho Wolf Abundance



Seasonal Changes in Idaho Wolf Abundance



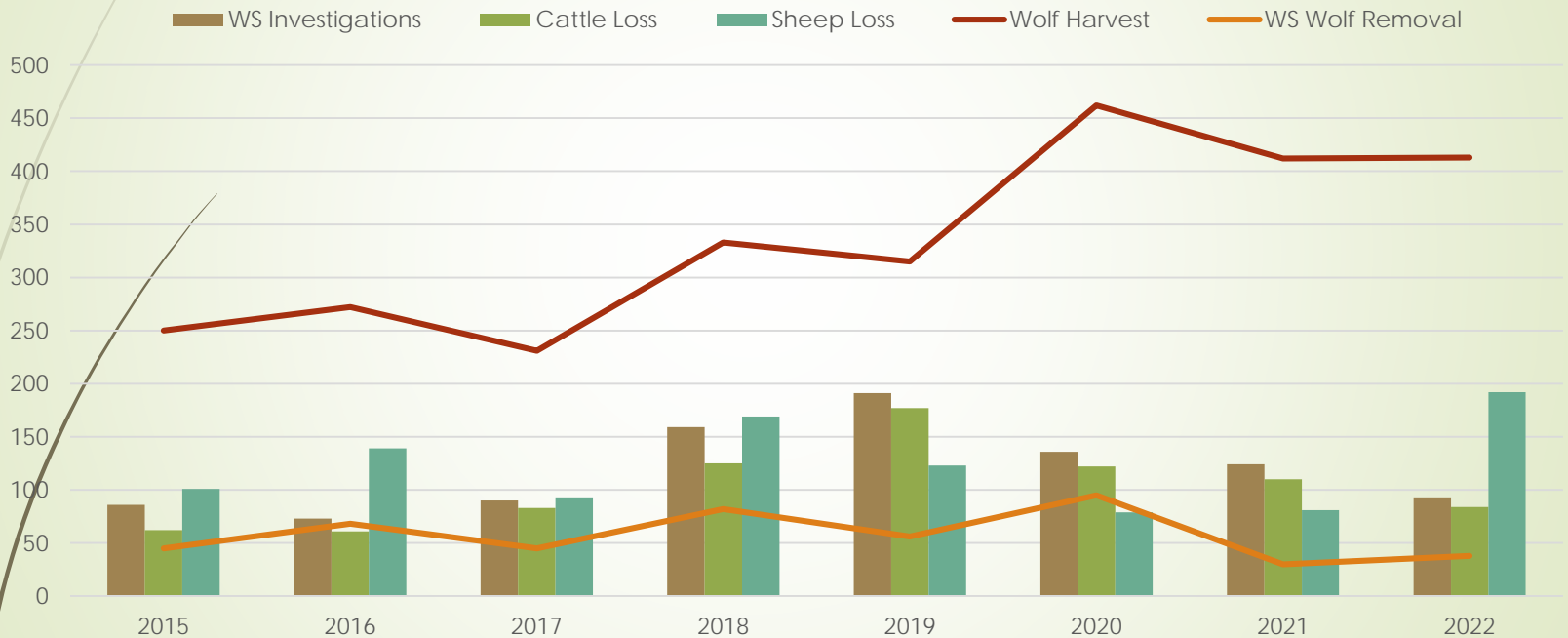
Seasonal Changes in Idaho Wolf Abundance



Conflict Management

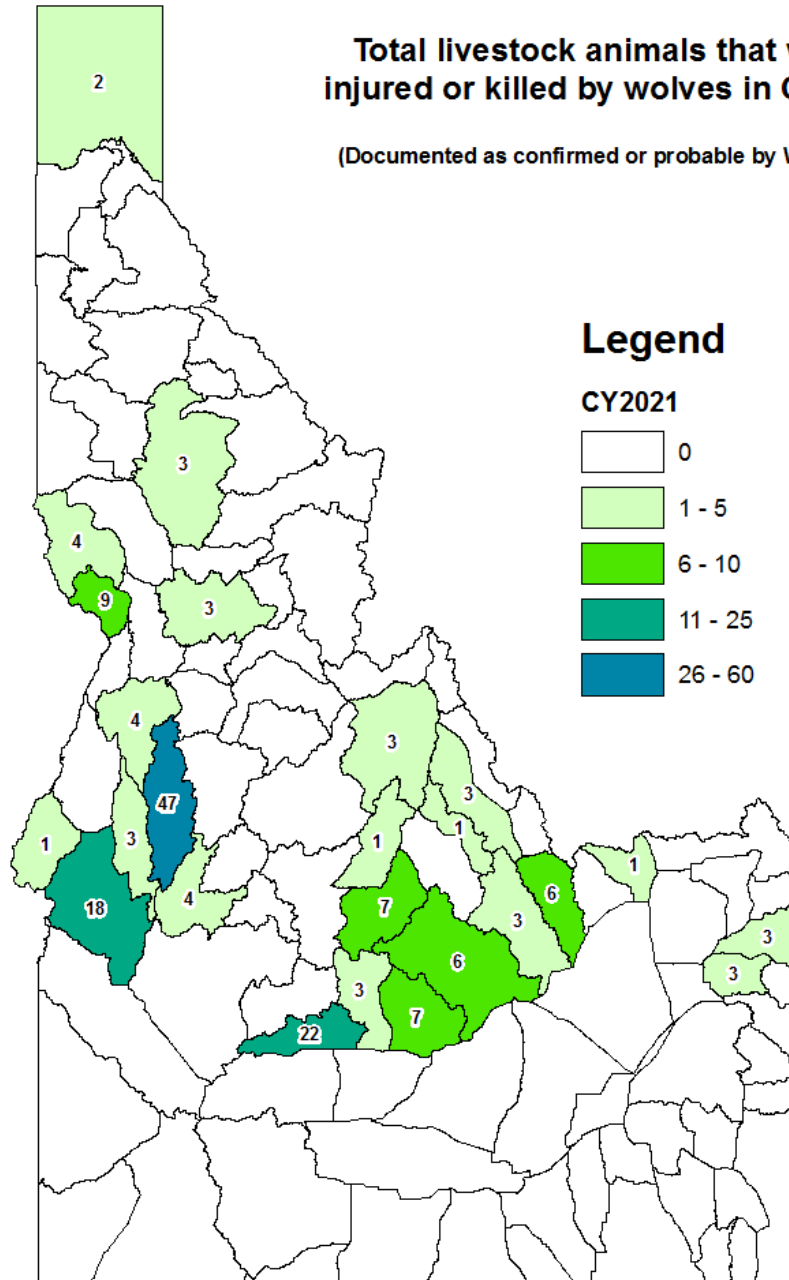
Idaho Wildlife Services Investigations Summary* and Wolf Mortality Fiscal Year 2015-2022

*(confirmed and probable)

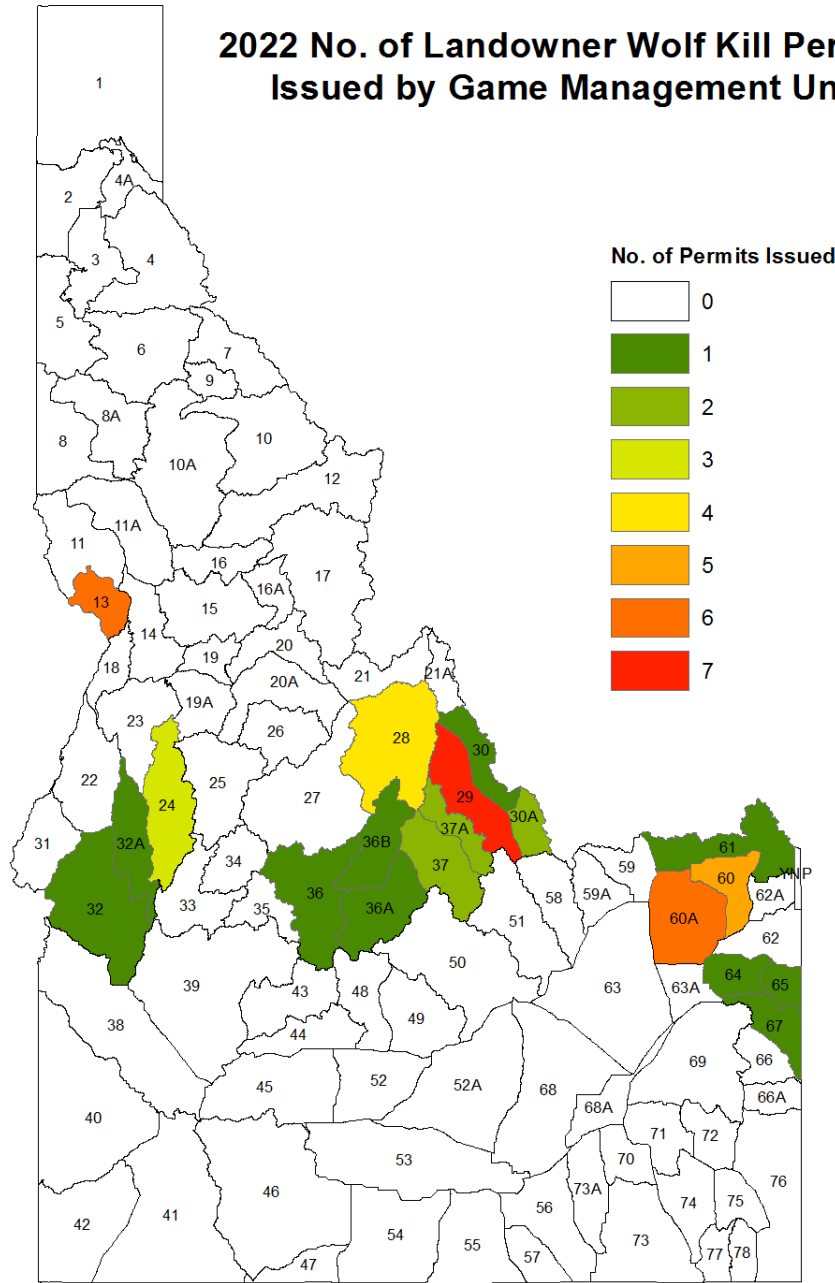


Total livestock animals that were injured or killed by wolves in CY2021

(Documented as confirmed or probable by Wildlife Services)



2022 No. of Landowner Wolf Kill Permits Issued by Game Management Unit

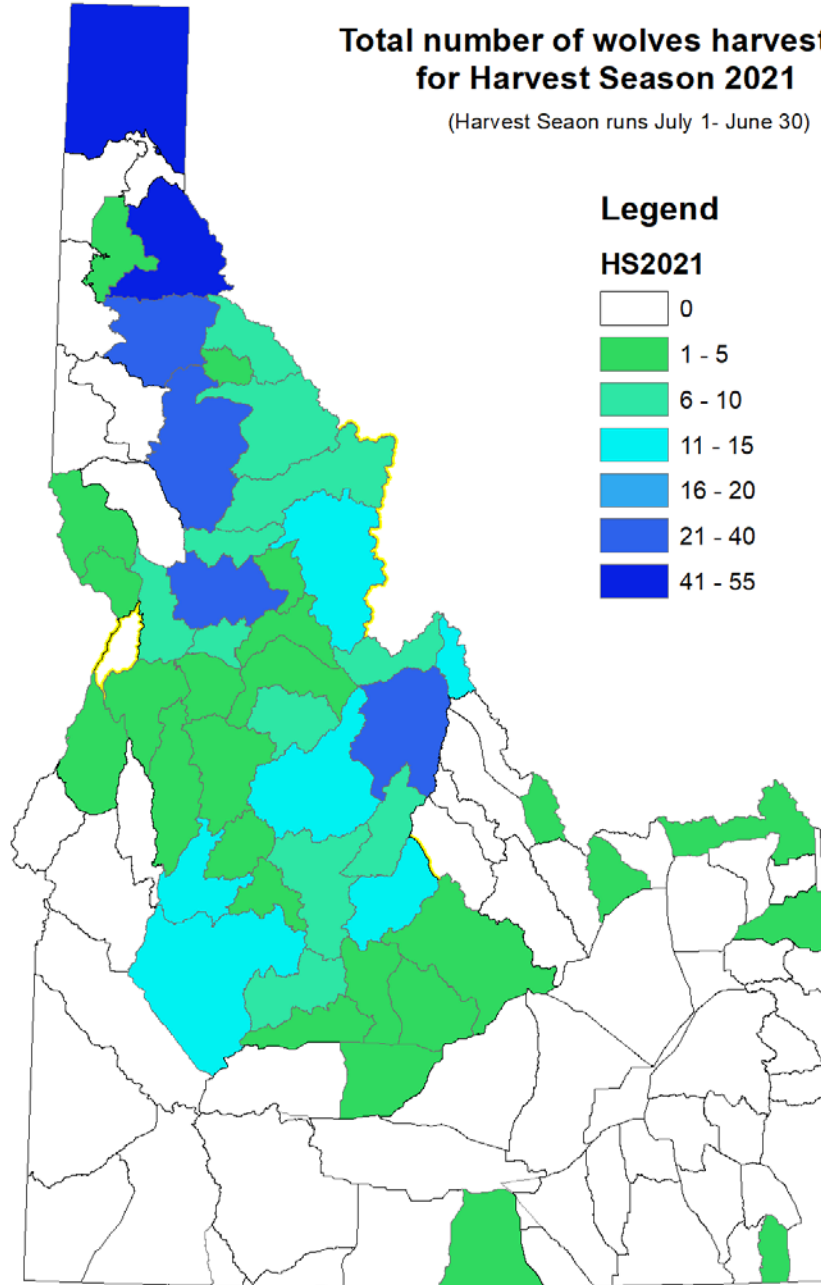
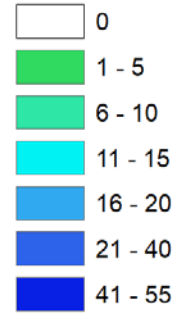


Total number of wolves harvested for Harvest Season 2021

(Harvest Season runs July 1- June 30)

Legend

HS2021



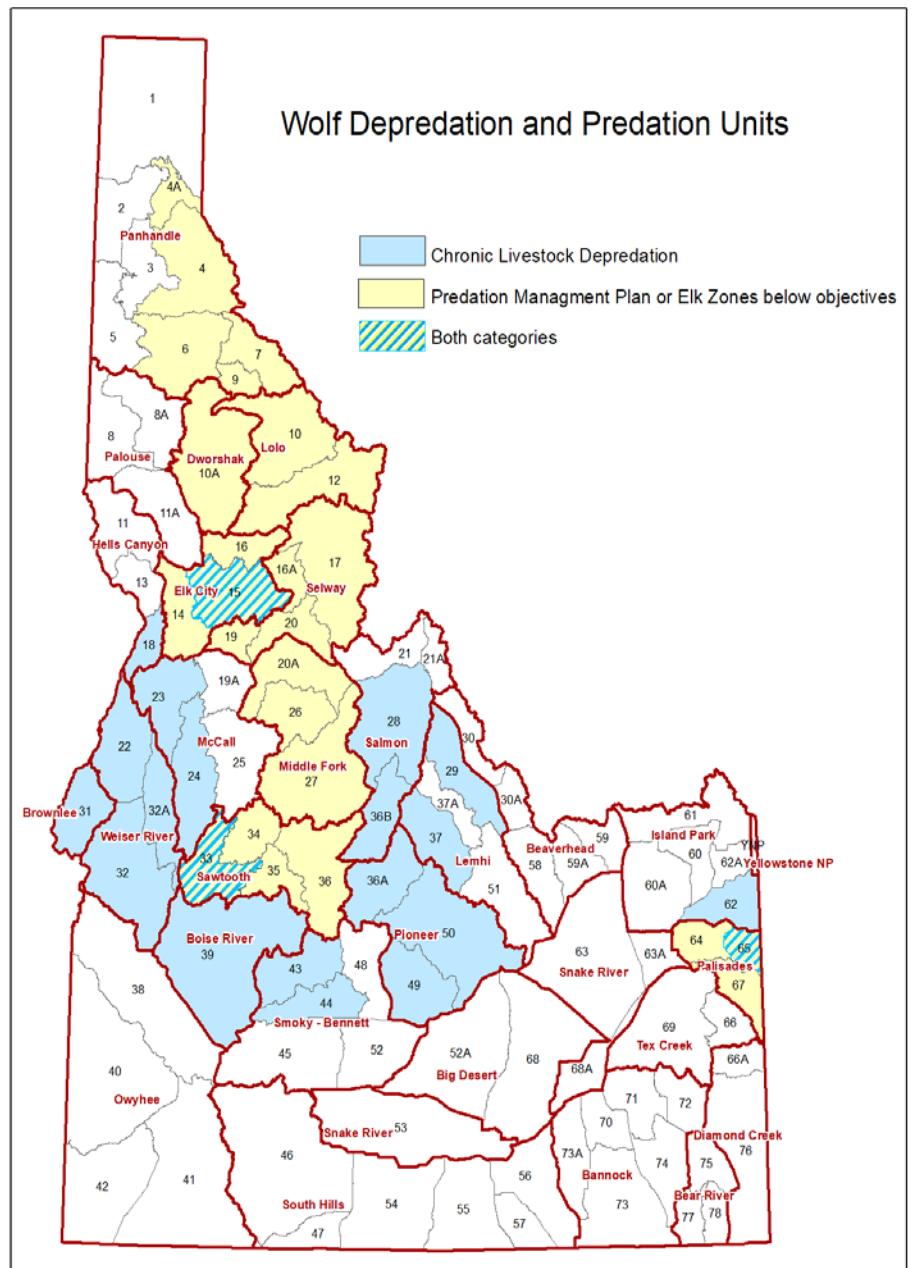
Changes related to wolf/livestock conflict management

- Department authorized “kill permits” allow livestock operator and their designated agents to utilize “expanded methods of take”, foothold traps and people authorized by ISDA under the Aerial Hunting Act.
- WDCB approved IDFG to develop a Cooperative Agreement for reimbursement of costs associated with harvesting wolves during open trapping and hunting seasons. The agreement prioritizes reimbursements in game management units with a history of chronic livestock depredations and secondary priority where elk populations are below management objectives. CA utilizes the additional revenue \$1211 required F&G to contribute to WDCB activities.

Idaho Department of Fish and Game Priorities for Expense Reimbursements

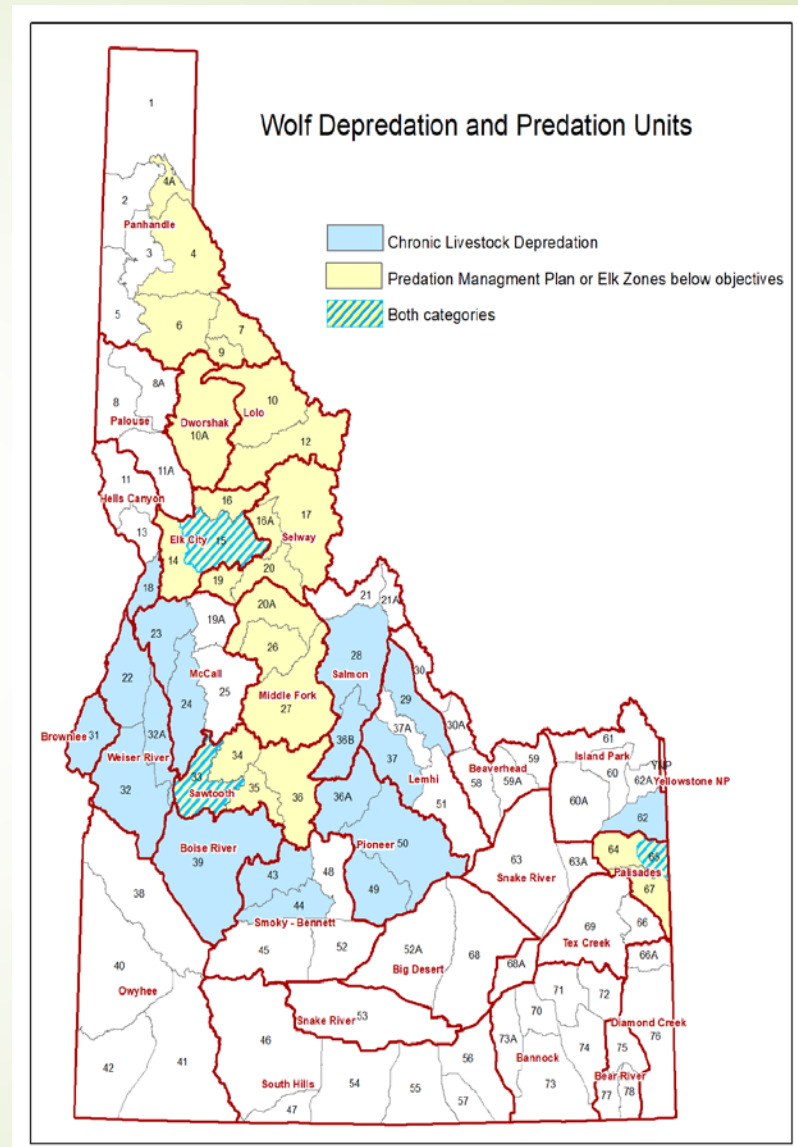
- 1. (Highest Priority) Units with chronic wolf-caused livestock depredations: 15, 18, 22, 23, 24, 28, 29, 31, 32, 32A, 33, 36A, 36B, 37, 39, 43, 44, 49, 50, 62*, 65
- 2. (Secondary Priority) Units with underperforming elk populations: 4, 4A, 6, 7, 9, 10, 10A, 12, 14, 15, 16, 16A, 17, 19, 20, 20A, 26, 27, 33, 34, 35, 36, 64, 65, 67

- *In unit 62, IDFG will pay F4WM for expense reimbursement only for lawful harvest occurring via trapping from November 15 to March 31; in Unit 62 IDFG will pay F4WM for expense reimbursement for lawful harvest via hunting during any open hunting season



Results

- HY2021 reported 108% of previous 5-year average statewide harvest of wolves (8% higher)
- HY2021 reported 148% of previous 5-year average harvest in units with chronic livestock depredation (net increase of 40%)
- HY2021 reported 108% of previous 5-year average harvest in units below objective for elk (stayed even)
- HY2021 reported 74% of previous 5-year average harvest for all other units (net decrease of 34%)



In 2021 approximately 50K Idaho hunters and trappers had at least 1 wolf tag

	2016	2017	2018	2019	2020	2021	2022
2 Wolf Tags of any combination	57	51	53	54	89	123	100
3 Wolf tags of any combination	29	39	37	44	73	56	78
4 Wolf tags of any combination	26	33	19	24	42	45	31
5 Wolf tags of any combination	12	12	15	15	15	26	29
6 Wolf tags of any combination	12	8	12	24	19	21	11
7 Wolf tags of any combination	2	1	5	3	10	9	8
8 Wolf tags of any combination	1	3	3	5	6	14	3
9 Wolf tags of any combination	2	0	0	2	2	7	3
10 Wolf tags of any combination	8	9	12	10	6	7	4
11 Wolf tags of any combination				0	7	6	3
12 Wolf tags of any combination				0	1	2	1
13 Wolf tags of any combination				4	0	3	2
14 Wolf tags of any combination				0	1	1	0
15 Wolf tags of any combination				4	1	0	1
16 Wolf tags of any combination					1	2	2
17 Wolf tags of any combination					0	0	1
18 Wolf tags of any combination					0	0	0
19 Wolf tags of any combination					0	0	0
20 Wolf tags of any combination					2	0	0
Total Hunters:	149	156	156	189	275	322	277

2021 Idaho Wolf Harvest

Number of people that harvested various numbers of wolves

		total				
# of wolves	# of individual sportsmen	wolves	wolves	people	wolves	people
10	1	10				
9	1	9				
8	1	8				
7	2	14				
6	1	6	47	6		
5	10	50				
4	8	32				
3	11	33				
2	37	74	189	66	236	72
1	153	153				
	225	389				



Conclusions

- ▶ Population Monitoring is important to track population abundance and trend
- ▶ Wolf population is relatively stable
- ▶ Harvest is increasing slightly year over year
- ▶ Livestock depredation investigations and confirmations (although represent a minimum estimate) are generally on a declining trend since 2019
- ▶ Tiered harvest reimbursement programs appear to re-direct hunter/trapper harvest into areas with high livestock conflict
- ▶ Limited numbers of hunters and trappers contribute to overall harvest, especially those harvesting more than one wolf in a hunt year

Northern Rocky Mountain Wolf DPS Status Review and request for emergency listing

- USFWS was petitioned to perform a 12-month Status Review on the Northern Rocky Mountain Wolf DPS (Idaho, Montana, WY) precipitated largely in response to Legislative changes to regulatory mechanisms.
- Due date was June 1, 2022. Service subsequently estimated by September 30, 2022
- Crickets



Questions?