



2023 Committee on Federalism
October 25, 2023

Lewiston Infrastructure





Goals for Today's Discussion

- How Dam Breaching would impact Lewiston's Infrastructure
- Drinking water
- Wastewater
- Stormwater drainage
- Flood protection
- Other infrastrucure

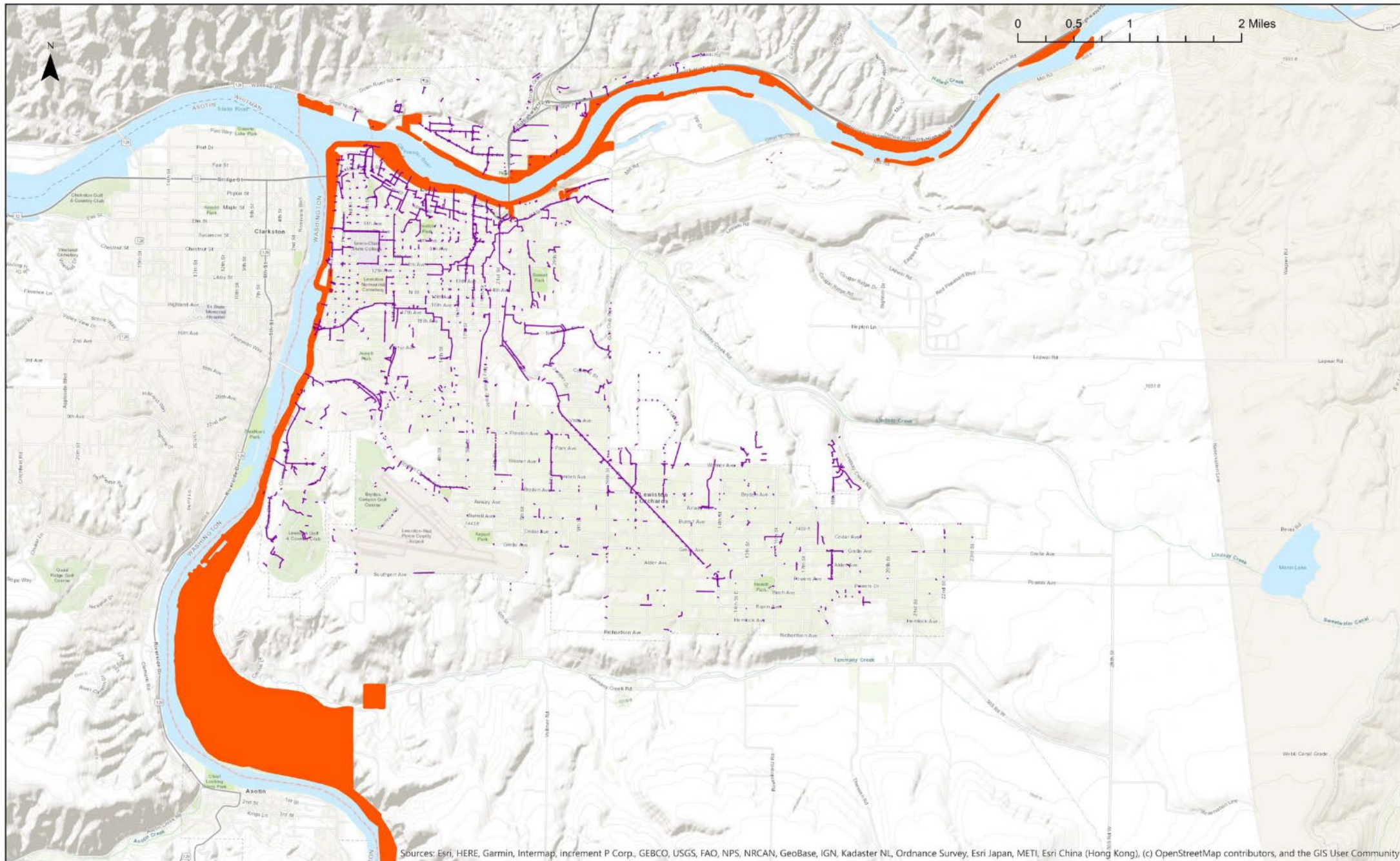




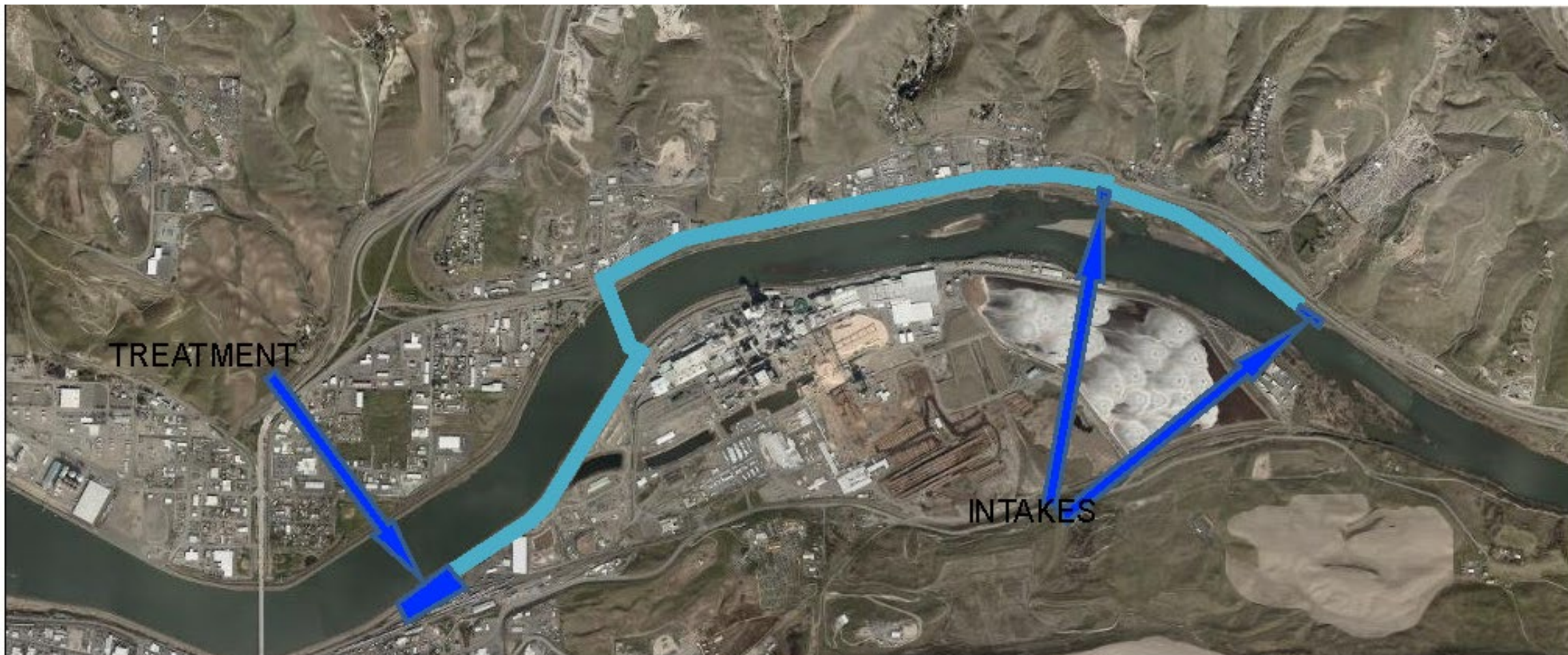
Lower Granite Dam project

- The project was authorized by the River and Harbor Act of 1945
- 1975 Construction of Lower Granite Dam/Lewiston Levee completed
- 8 miles of Levee - \$39.3 million of flood damage avoided
- Required redesign of all interfaces of City infrastructure with the rivers
 - Domestic water diversion
 - Treated wastewater discharge
 - Storm and groundwater drainage pumped over the top or siphoned under
 - Federal take of all the land adjacent to the Snake and Clearwater Rivers

Corps of Engineers Property



Drinking Water Intakes and Plan



Water Treatment Plant



New Water Plant Interior





This drawing is only a visual aid information and locations are approximate. The information is for informational purposes only.

Wastewater Treatment Plant



Wastewater Plant, River Crossing & Discharge



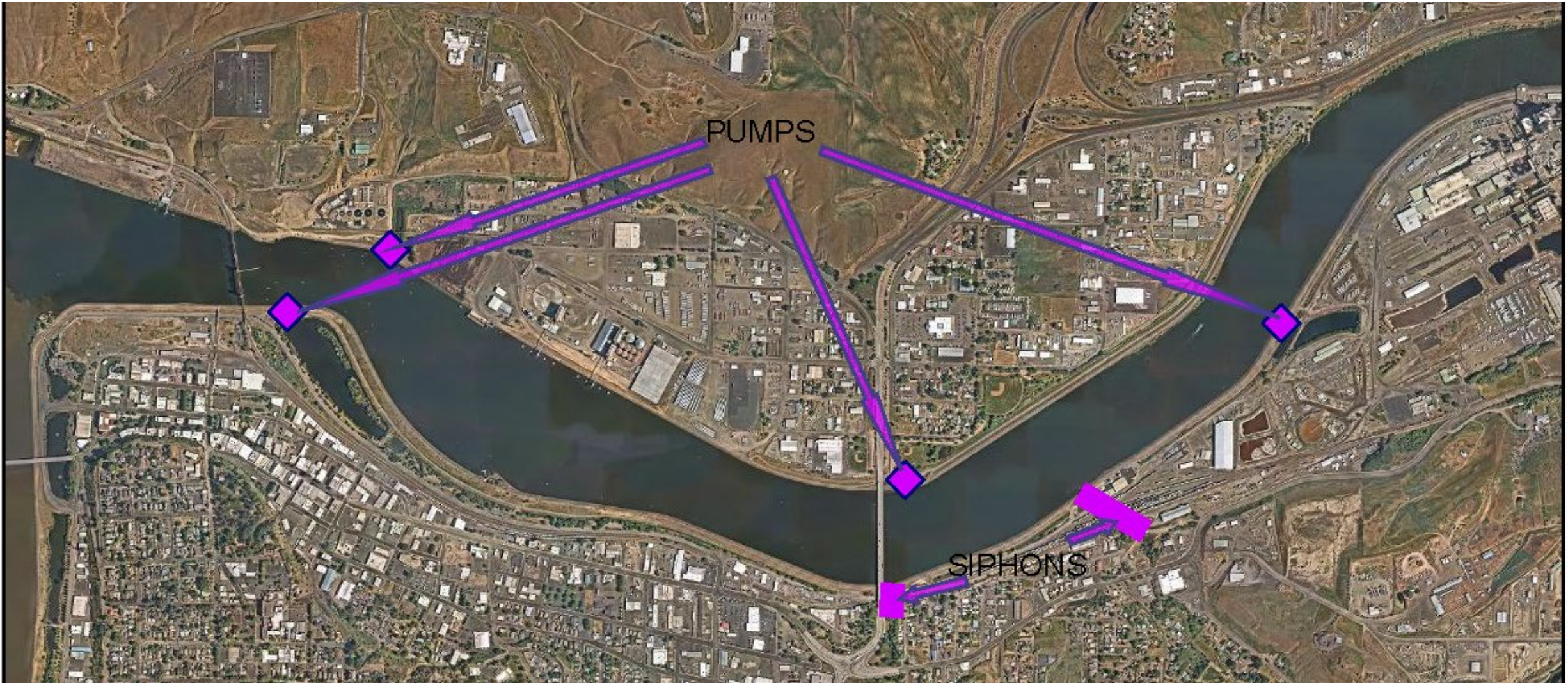
Lewiston Wastewater Plant



Lewiston Wastewater

- Southshore Pump station
- 24 inch primary line
- 16 inch industrial line
- 16 inch redundant backup

Stormwater & Drainage



Corps' NE Stormwater Pump Station



Pump station outfall



Corps Sediment Maintenance in Levee Ponds



Boat Launch



Riverfront Ownership? Islands?



North Lewiston Levee & Mill in Background



Removal of old Dam to make way for Levees



Lewiston Infrastructure

- Drinking water intakes, pipes, well levels, aquifer recharge
- Wastewater pumping, pressure lines, diffuser, and permit limits
- Stormwater drainage treatment ponds, pumps, siphons, flood protection and permit limits.
- Relocation of river interfaces.
- Private infrastructure