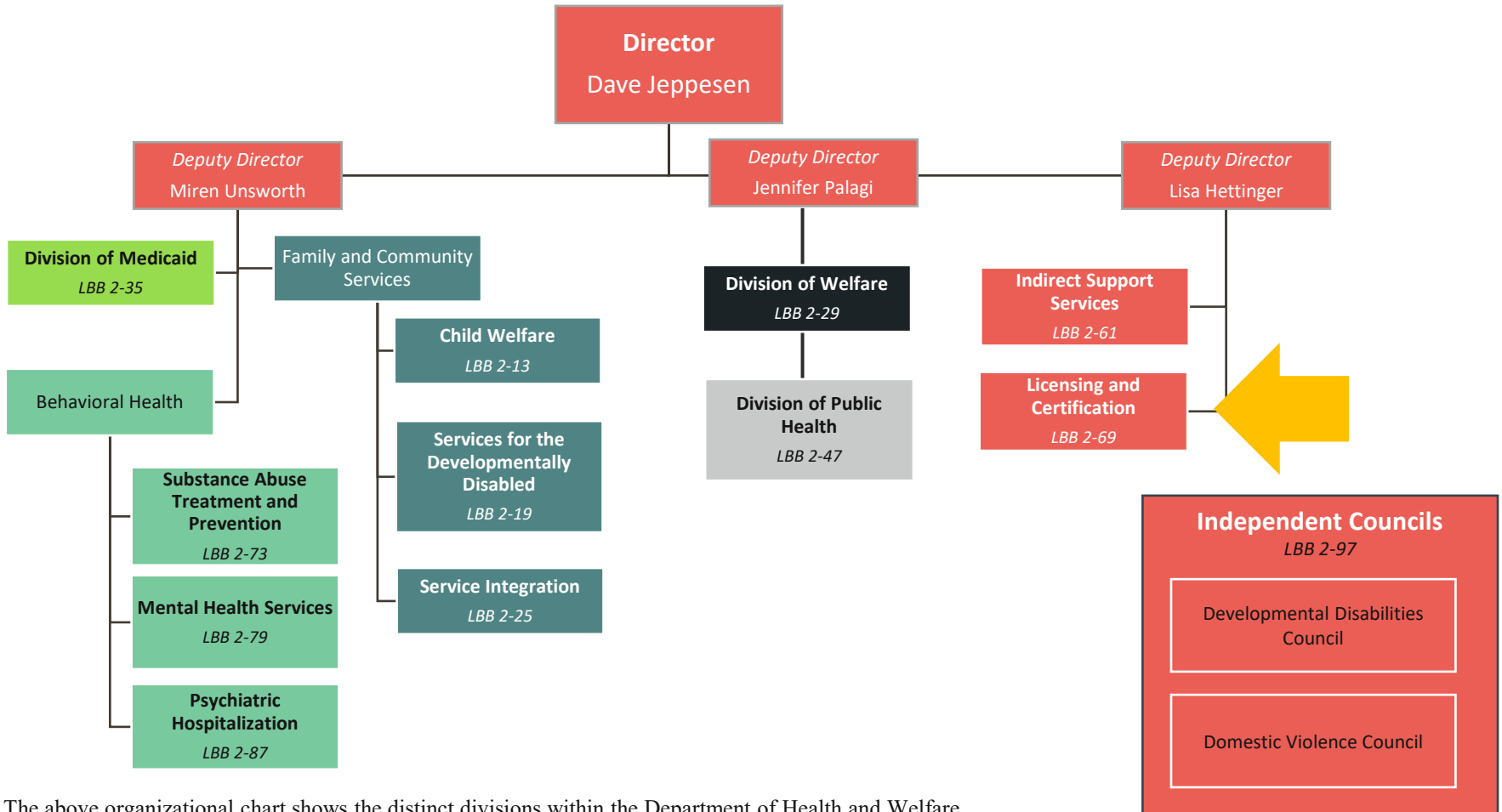




Agency Summary & Statutory Authority

The Idaho Department of Health and Welfare provides services and regulatory programs in partnership with taxpayers, consumers, and providers to promote economic well-being, support vulnerable children and adults, enhance public health, and encourage self-sufficiency. [Chapter 10, Title 56, Idaho Code]



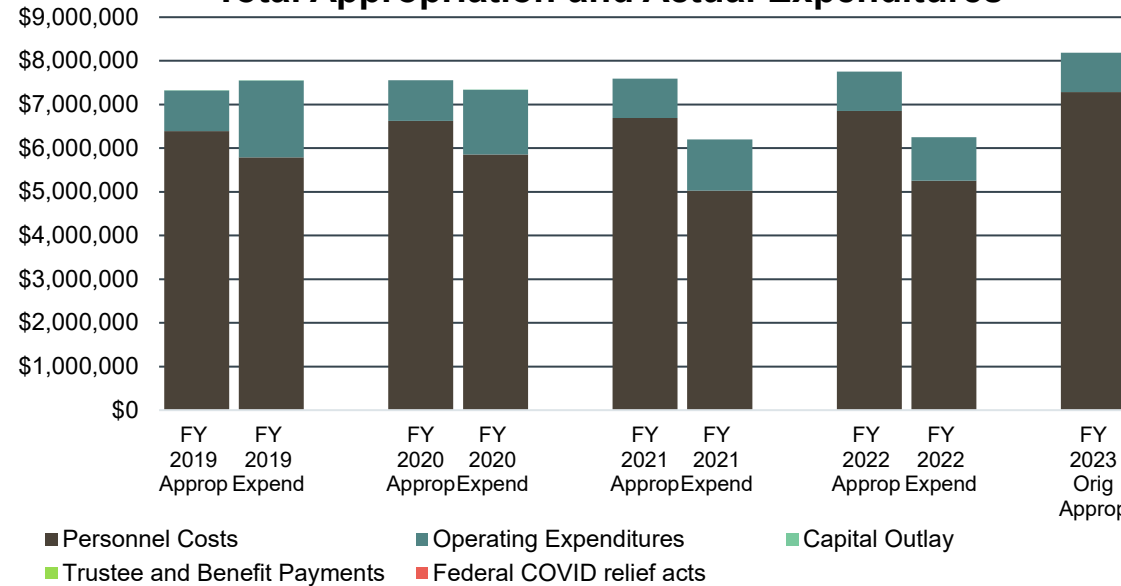
The above organizational chart shows the distinct divisions within the Department of Health and Welfare grouped by how they have traditionally appeared in appropriation bills together. All of the same shade appear in the same appropriation bill.



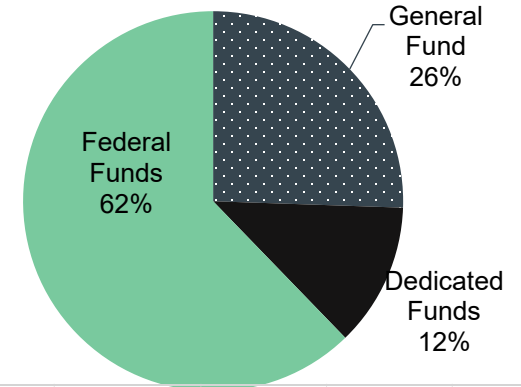
Agency Summary & Statutory Authority

Licensing and Certification surveys, inspects, licenses, and certifies health care facilities that require certification or licensure by either state or federal requirements. The program investigates complaints, conducts on-site surveys, and takes appropriate licensure action to protect the health and safety of vulnerable people receiving health-related services and support.

Total Appropriation and Actual Expenditures



4 year Average Total Expenditures



Licensing & Certification Average Vacancy Rates

Fiscal Year	Authorized	Filled	Vacant	Percent
FY 2019	71.90	64.73	7.17	10.0%
FY 2020	71.90	64.48	7.42	10.3%
FY 2021	71.90	61.23	10.67	14.8%
FY 2022	71.90	55.82	16.08	22.4%
FY 2023	71.90	54.93	16.97	23.6%

*FY 2023 includes data through December 2022

- The Licensing and Certification is authorized 71.90 FTP
 - Oversees 19 different types of healthcare facilities and agencies to ensure they are meeting applicable federal and state statute and rules
- Bureau of Facility Standards: oversees three programs
 - Long-Term Care Program: ensures the state's 81 long-term care facilities, which have 6,031 beds, are meeting federal regulations and state rules
 - Non-Long-Term Care Team: surveys, licenses and certifies: 53 hospitals; 66 home-health agencies; 29 end-stage renal dialysis centers; 47 hospice agencies; 53 ambulatory surgery centers; 52 intermediate care facilities for the intellectually disabled; 48 rural health clinics; 7 occupational therapy/physical therapy clinics; 6 portable x-ray providers
 - Facility Fire Safety and Construction Program: oversight, training, and management of the facility fire safety and building construction requirements
- Certified Family Homes
- Developmental Disabilities Agency/Residential Habilitation Agency Certification program
- Children's Agency Licensing Program: 26 residential care facilities; 1 outdoor therapeutic programs; 3 foster care agencies; 6 adoption centers; 2 children's substance use disorder treatment facilities; and 1 private, non-accredited schools operating in Idaho