

IDAHO

STATE DEPARTMENT
OF AGRICULTURE



ISDA Overview

Attachment 4 - January 19, 2023

ISDA

Dual mission

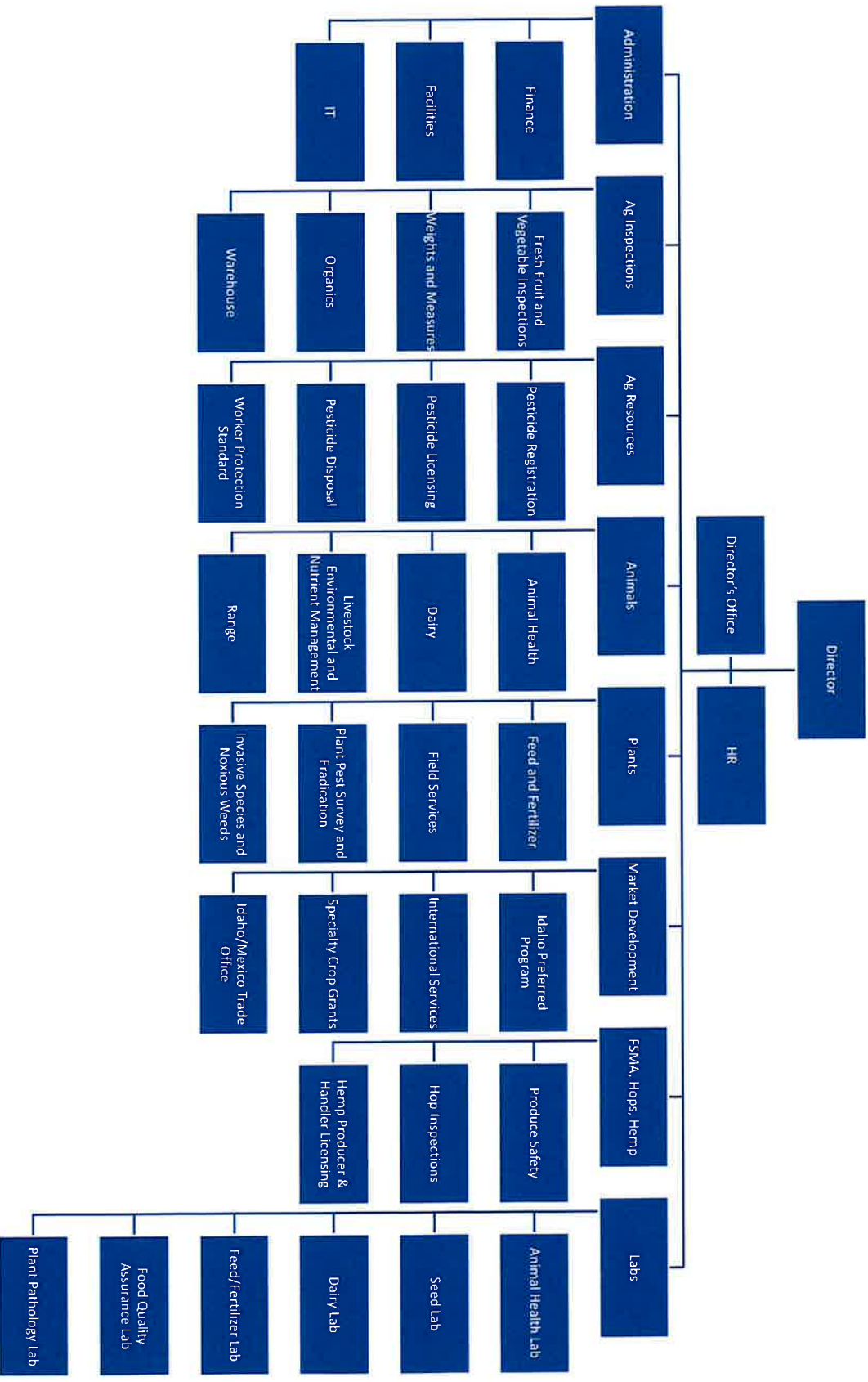
Statutory enforcement

Promotion

- “Encourage and promote in every practical manner, the interests of agriculture, horticulture, apiculture, aquaculture, the livestock industries...and their allied industries.”



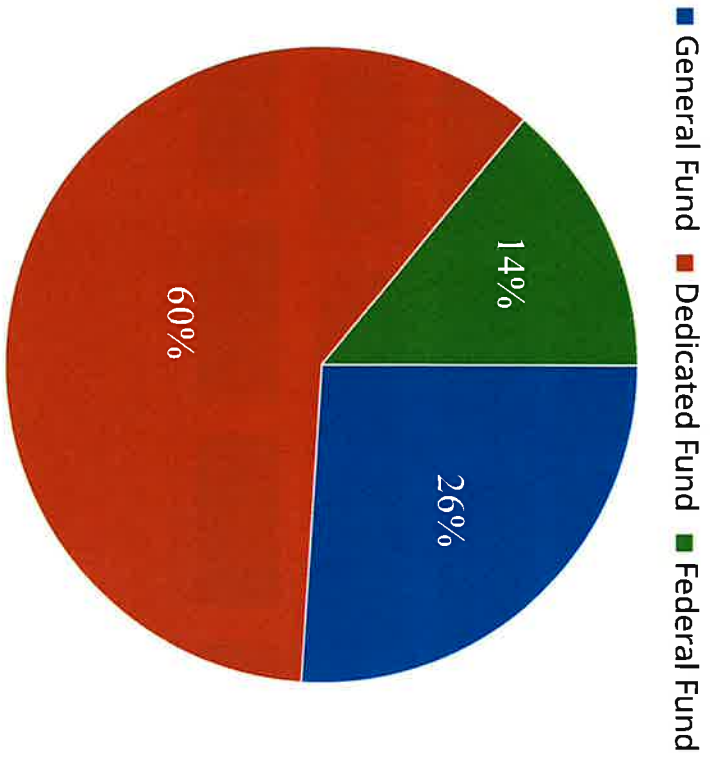
Attachment-14-January-19, 2023



Attachment 14 - January 19, 2023

Budget Composition

FY2023 Budget



Weights & Measures

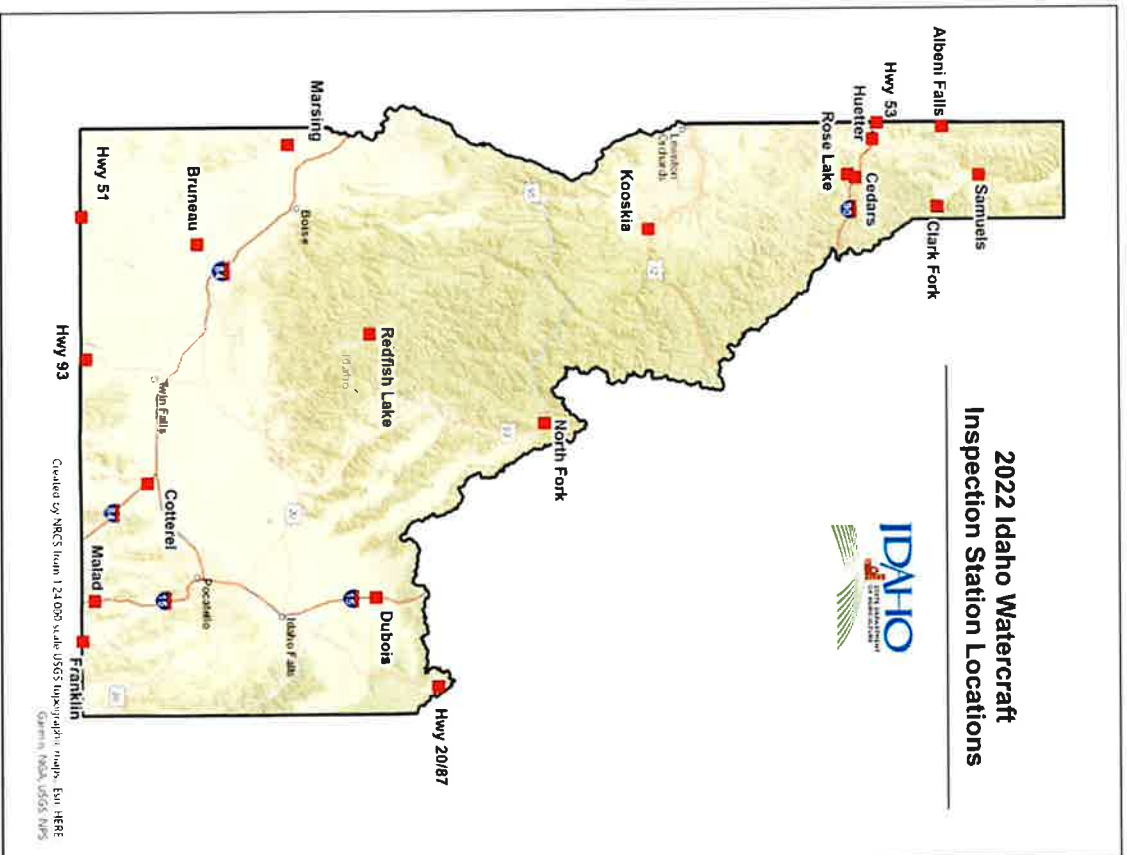
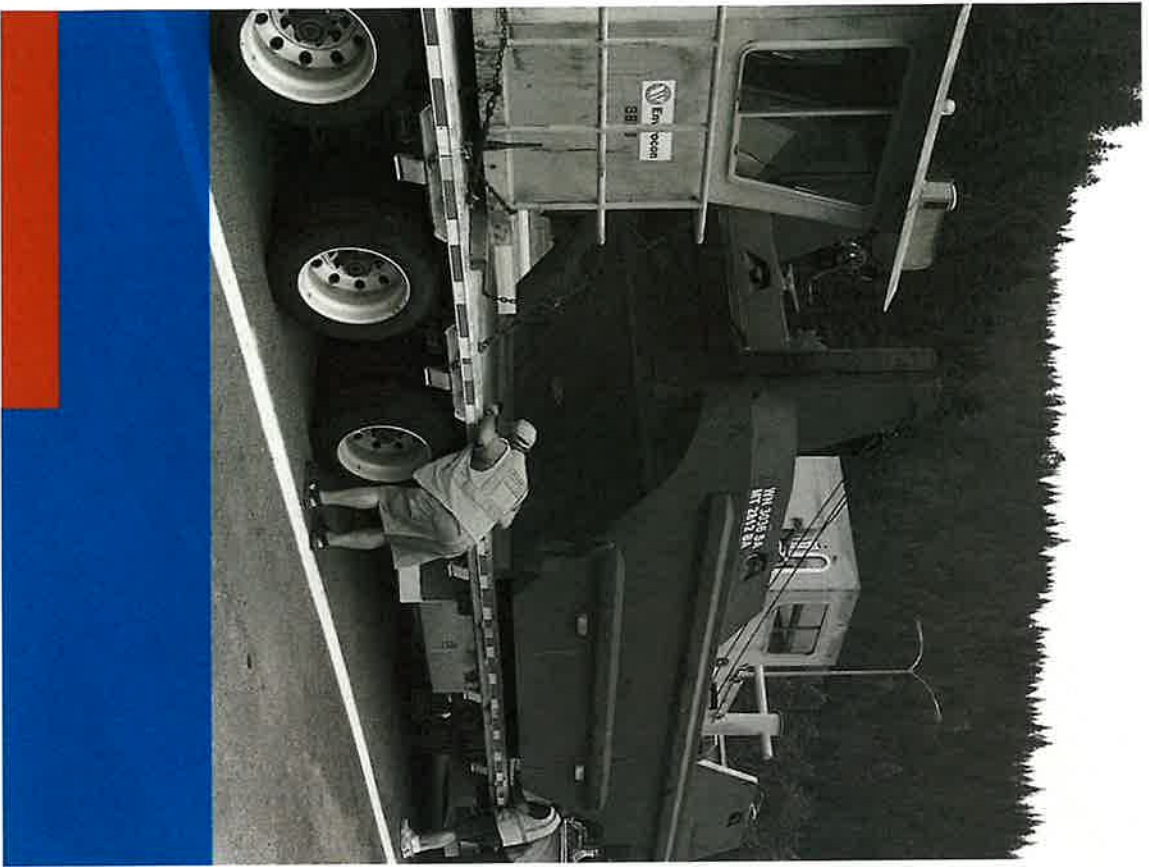
Inspect weighing and measuring devices

9 inspectors across Idaho

35,000 devices inspected annually

- Gas station pumps
- Livestock scales
- Grocery stores scales
- Weighing devices at airports

Attachment 4, January 19, 2023



Attachment 4 - January 19, 2023

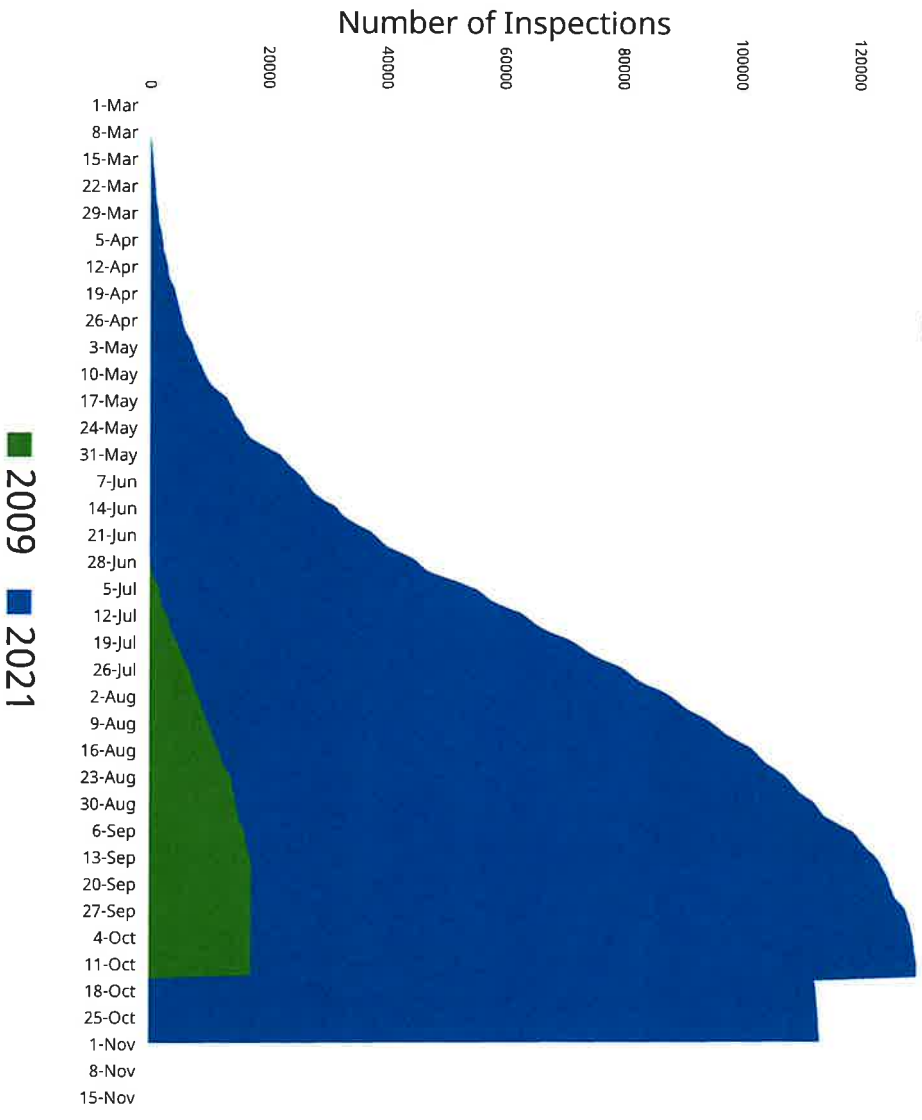
Inspection Season

LONGER INSPECTION SEASON

- 80% longer over 12 years

GROWTH IN INSPECTIONS

- 560% more watercraft inspections over 12 years



Attachment 4 - January 19, 2023

Idaho Farm & Ranch Center

[Home](#) [Finance](#) [Transition](#) [Manage](#) [Contact](#) [About](#) [Contact Us](#) [ISDA](#)

Idaho Farm and Ranch Center

Cultivating Opportunity.



Not sure where to start with farm or ranch estate and succession planning?



Do you need assistance with obtaining a loan or creating financial statements?



Looking for ways to improve your land, hold family meetings, or expand?



Would you like to get involved with agricultural groups across the state?

A Hatchment 4 - January 19, 2023



Thank You

Attachment 4 - January 19, 2023