

Senate Commerce & Human Resources

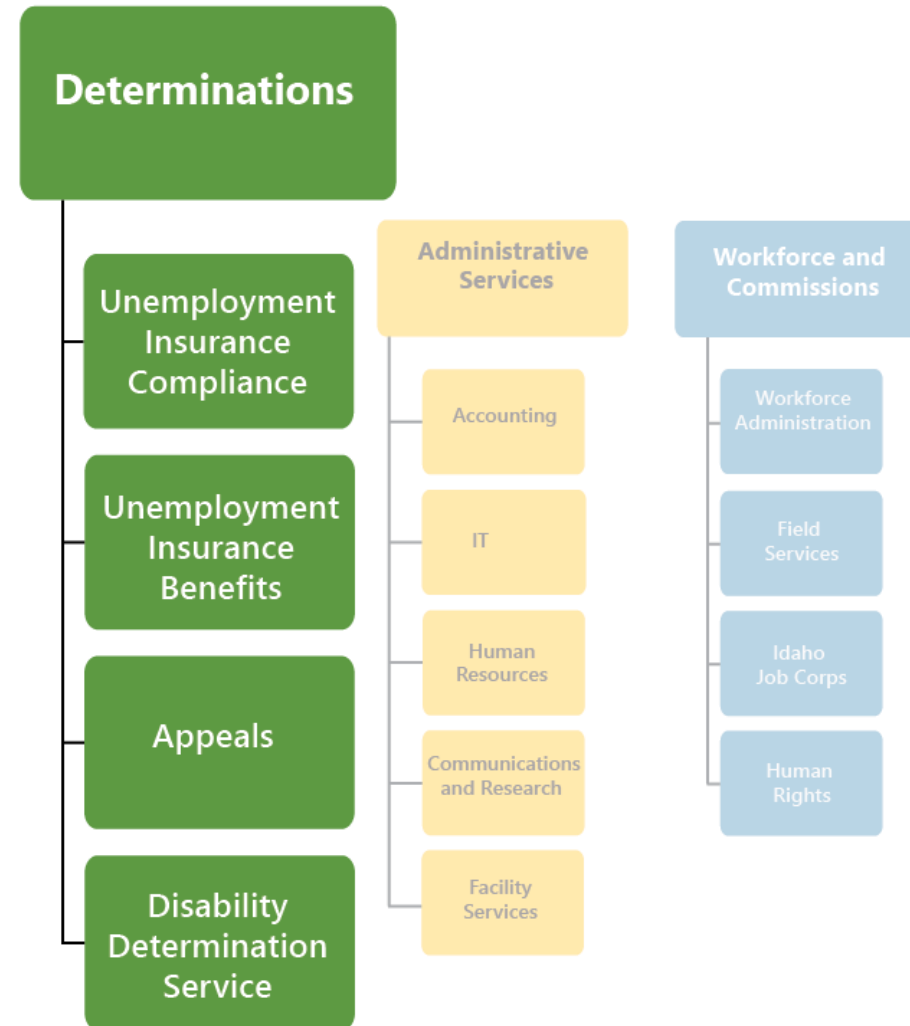
Attachment 2, Jani Revier, IDOL, February 9, 2023

Jani Revier, Director
Feb. 7, 2023

IDAHO
DEPT. OF LABOR

Determinations

Idaho Department
of Labor
Director



- **Unemployment insurance:** Idaho Code 72-1300
- **Wage and Hour division:** Idaho Code 45-600

Unemployment Insurance Benefits

- Federal-state partnership based on federal law, but administered by state employees under Employment Security Law, Idaho Code 72-1300.
- Most employers are experienced rated.
- Claimants in Idaho are eligible for \$72-\$532 per week, for 10 to 21 weeks.

[Home](#) » [Login](#)

Welcome to iUS[®] Claimant Portal

The iUS[®] Claimant Portal helps you manage your unemployment insurance (UI) account. Use this secure, self-service system to file and view your benefit claims.

With the iUS[®] Claimant Portal you can:

- Apply for a UI benefits claim.
- File a weekly certification for benefits.
- Manage your profile and account information.
- Access claim and overpayment details.
- View benefit payments and tax documents.

Questions about the iUS[®] Claimant Portal?

Find answers in these user guides.

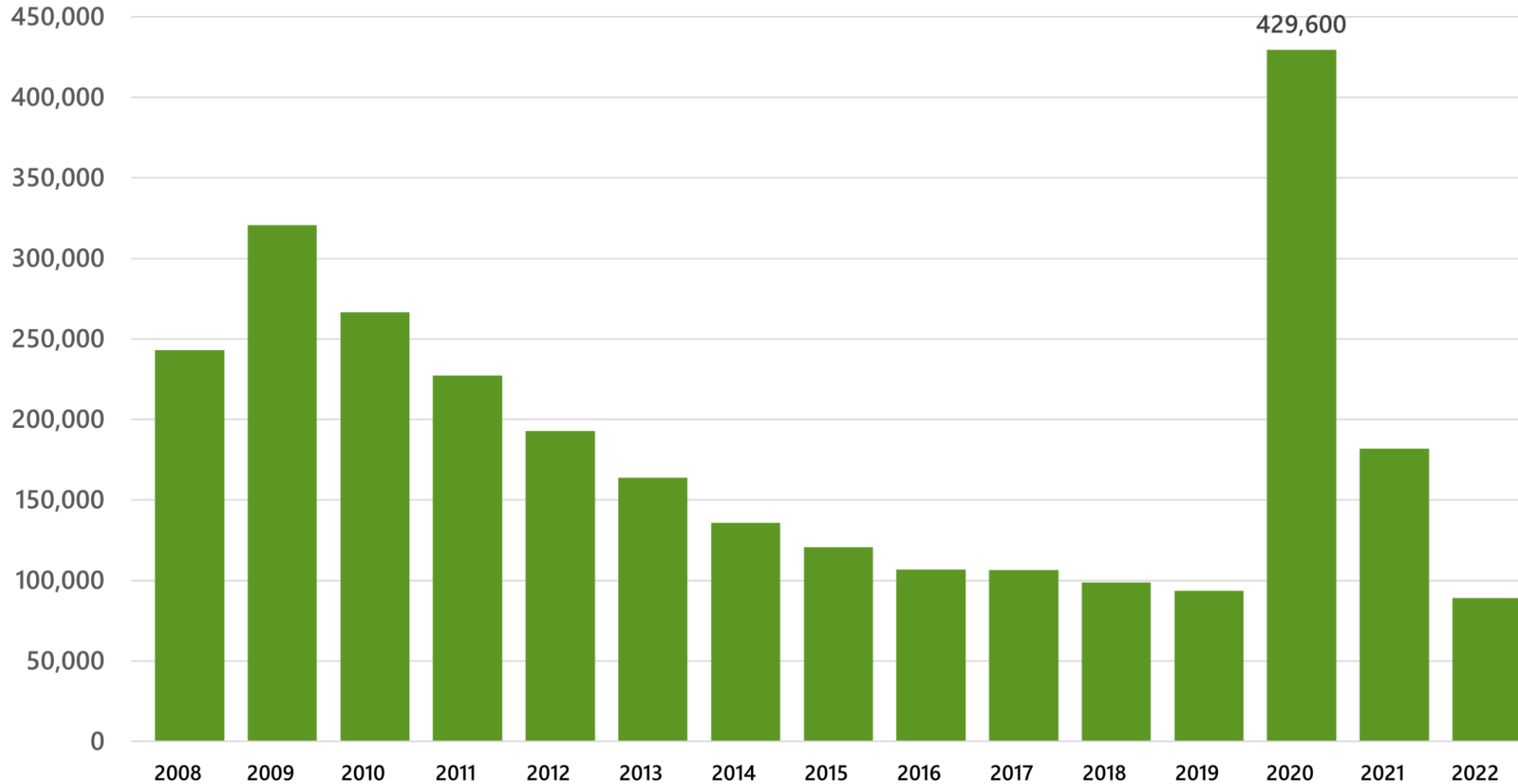
- [Quick Start Guide](#)
- [ID.me Instructions](#)

Login

Sign in with **ID.me**

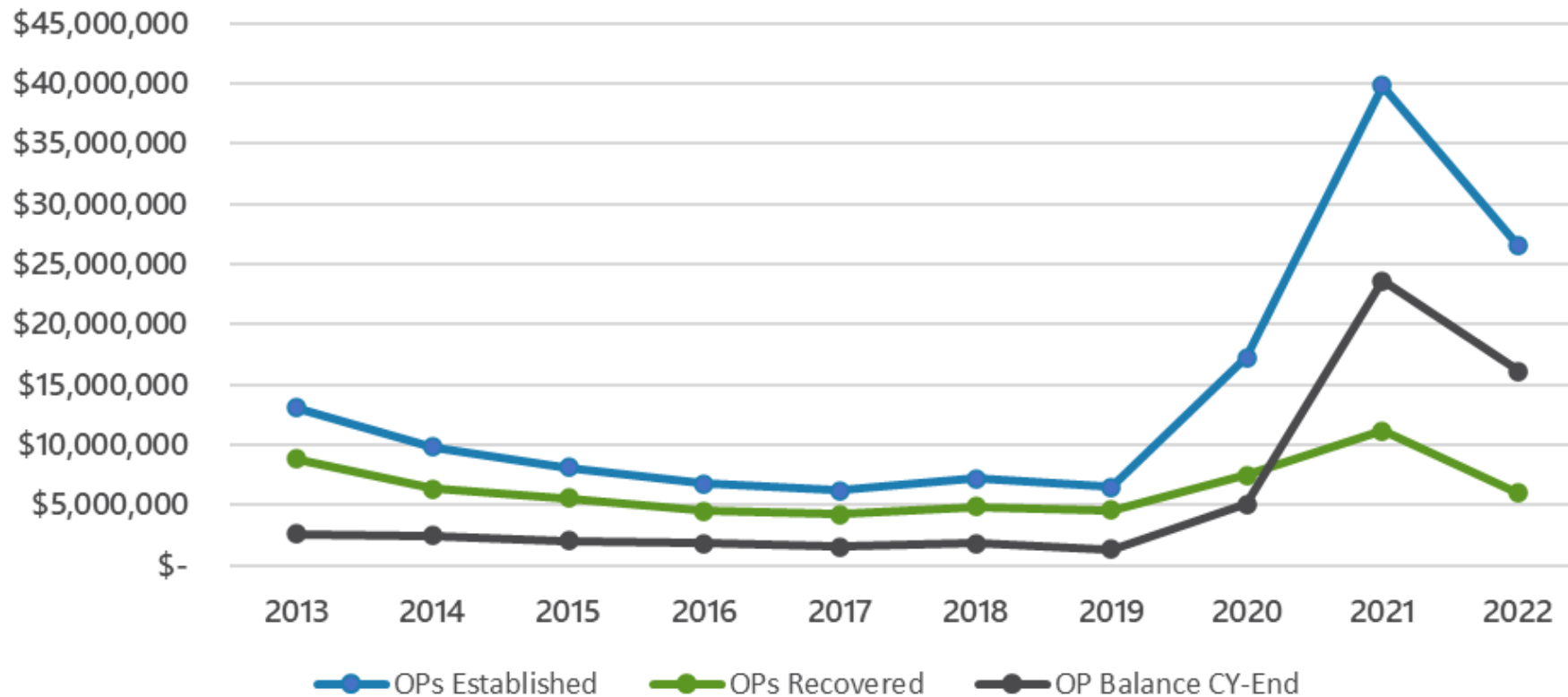
ID.me is our trusted technology partner in helping to keep your personal information safe. They specialize in digital identity protection and help us make sure you're you—and not someone pretending to be you—before we give you access to your information.

Unemployment Insurance Claims Workload



Unemployment Insurance Compliance

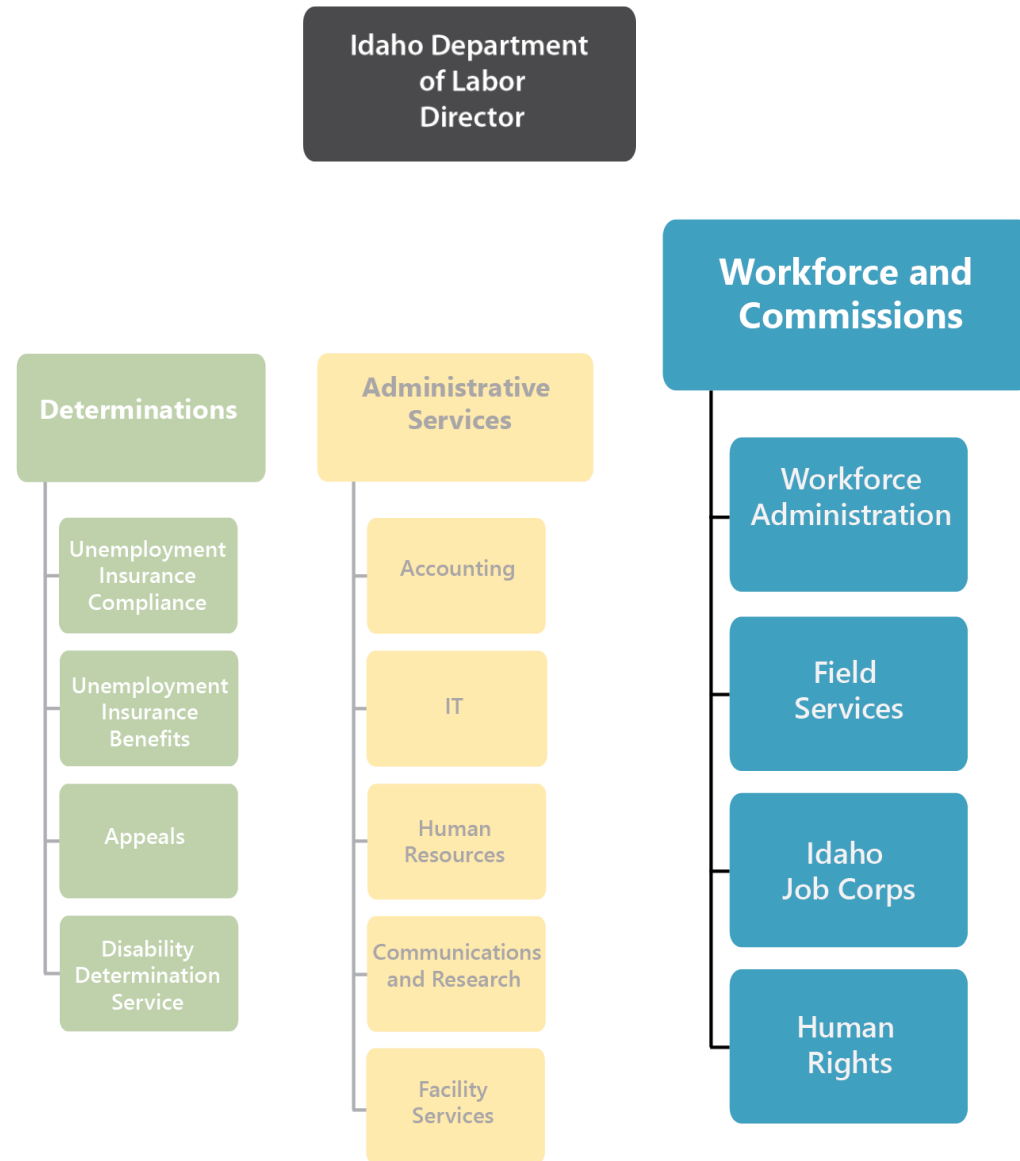
Overpayment Collection Activity on Collectible Dues 2013-2022 Calendar Years



Disability Determination Services

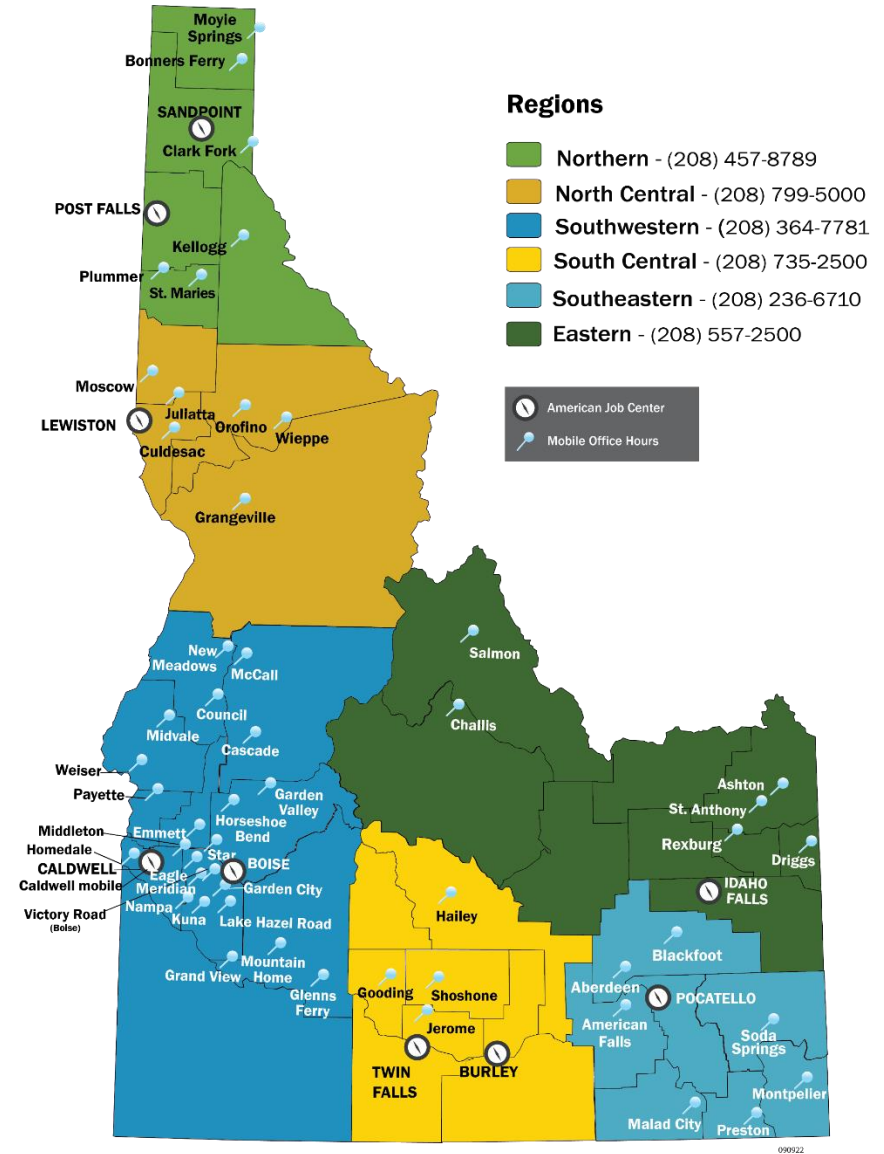
- 42 U.S. Code § 421
- Office consolidation
 - Approximately \$300,000 saved annually

Workforce and Commissions



Workforce Programs & Service Locations

- Employment Services
- WIOA Youth
- Trade Adjustment Assistance
- Apprenticeship
- Veterans Programs
- Idaho Launch



Apprenticeships

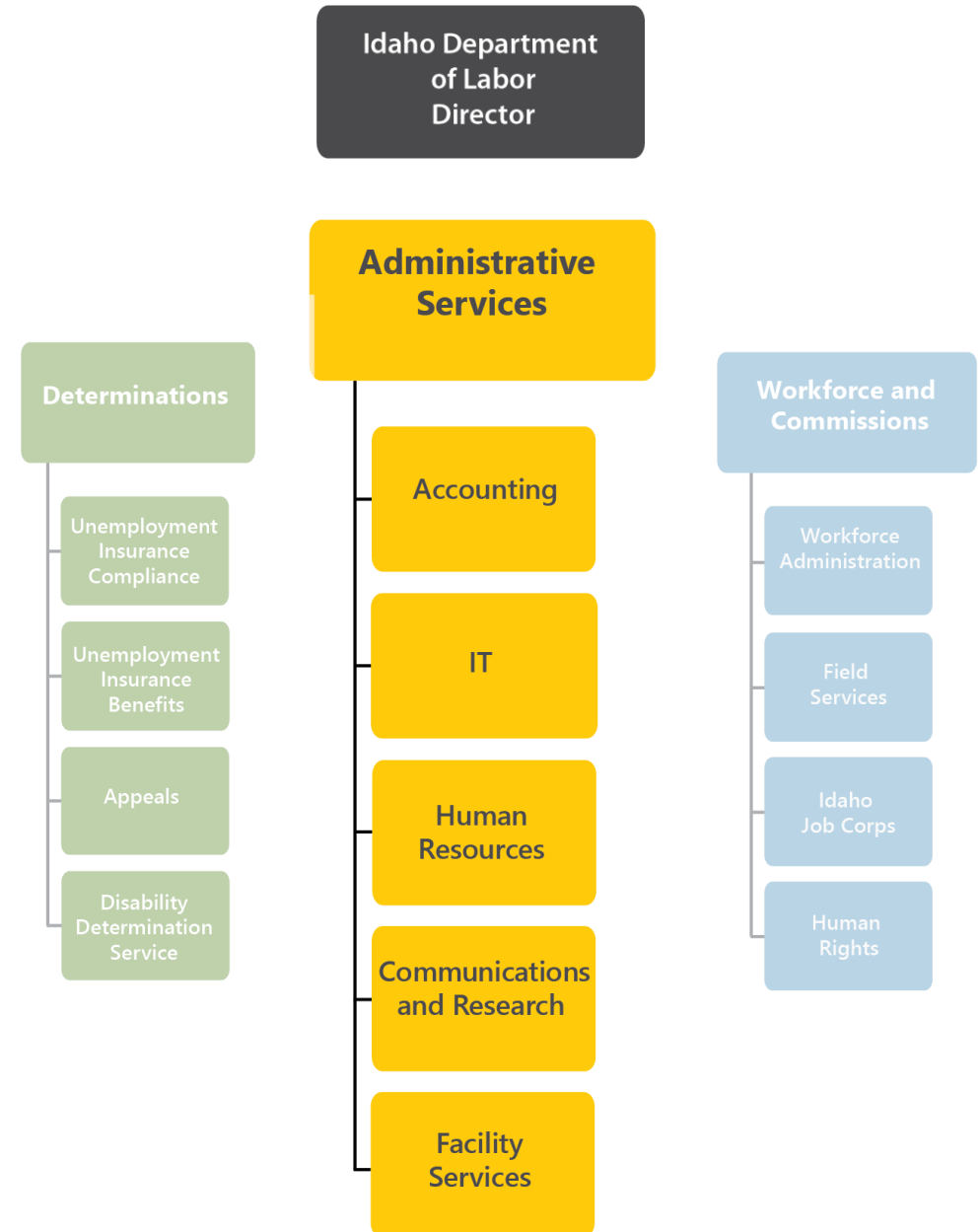
- 52% increase in new enrollees from 2021.
- 455 active employers.
- 81 new apprenticeship programs.



Commissions

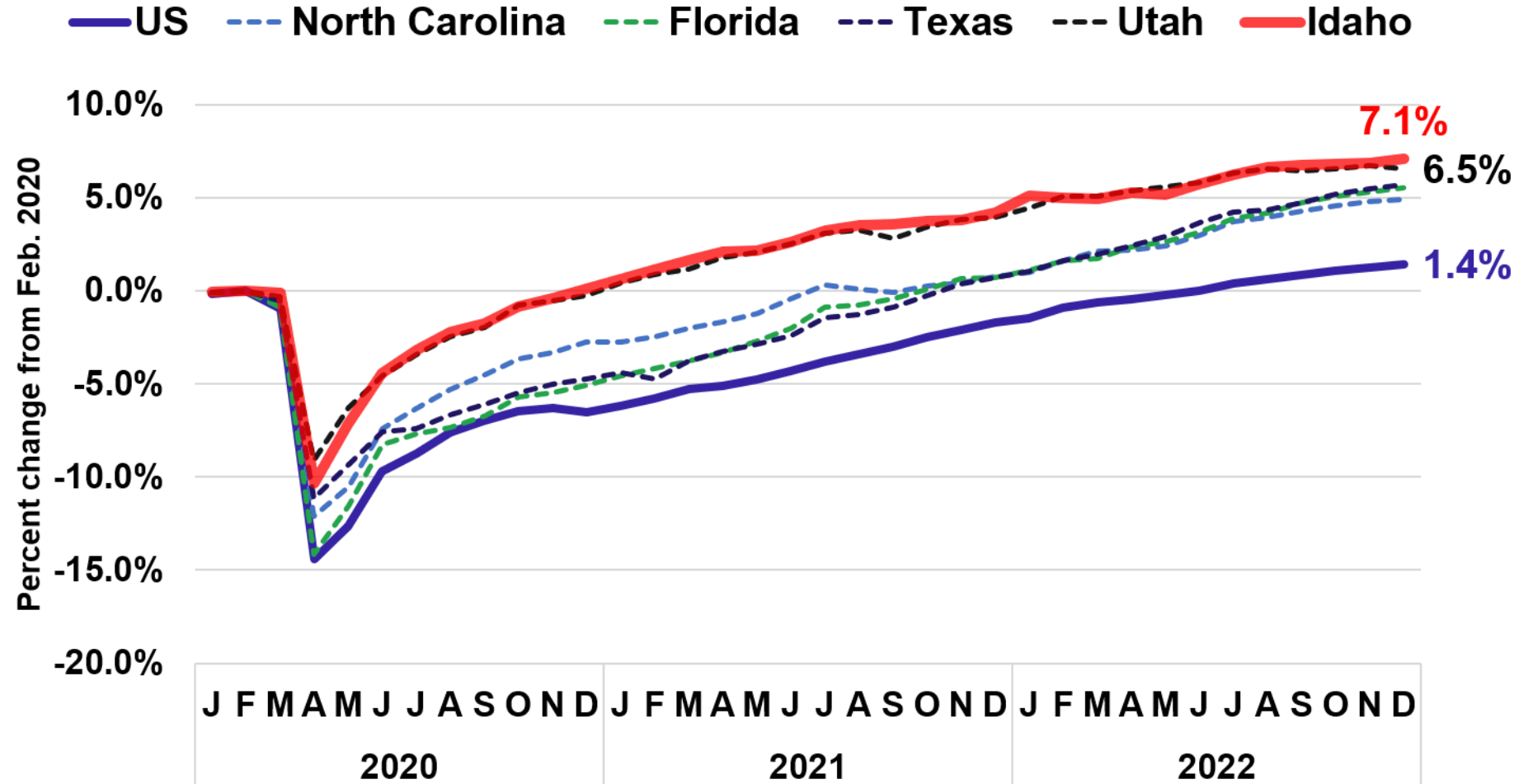
- **Human Rights Commission:** Idaho Code Section 67, Chapter 59
- Nine commission members appointed by the governor for three-year terms
- **Serve Idaho:** Executive Order No. 2019-11
- 15 commission members appointed by the governor for three-year terms.

Administrative Services



Idaho Leads Nation in Post-Pandemic Jobs Growth

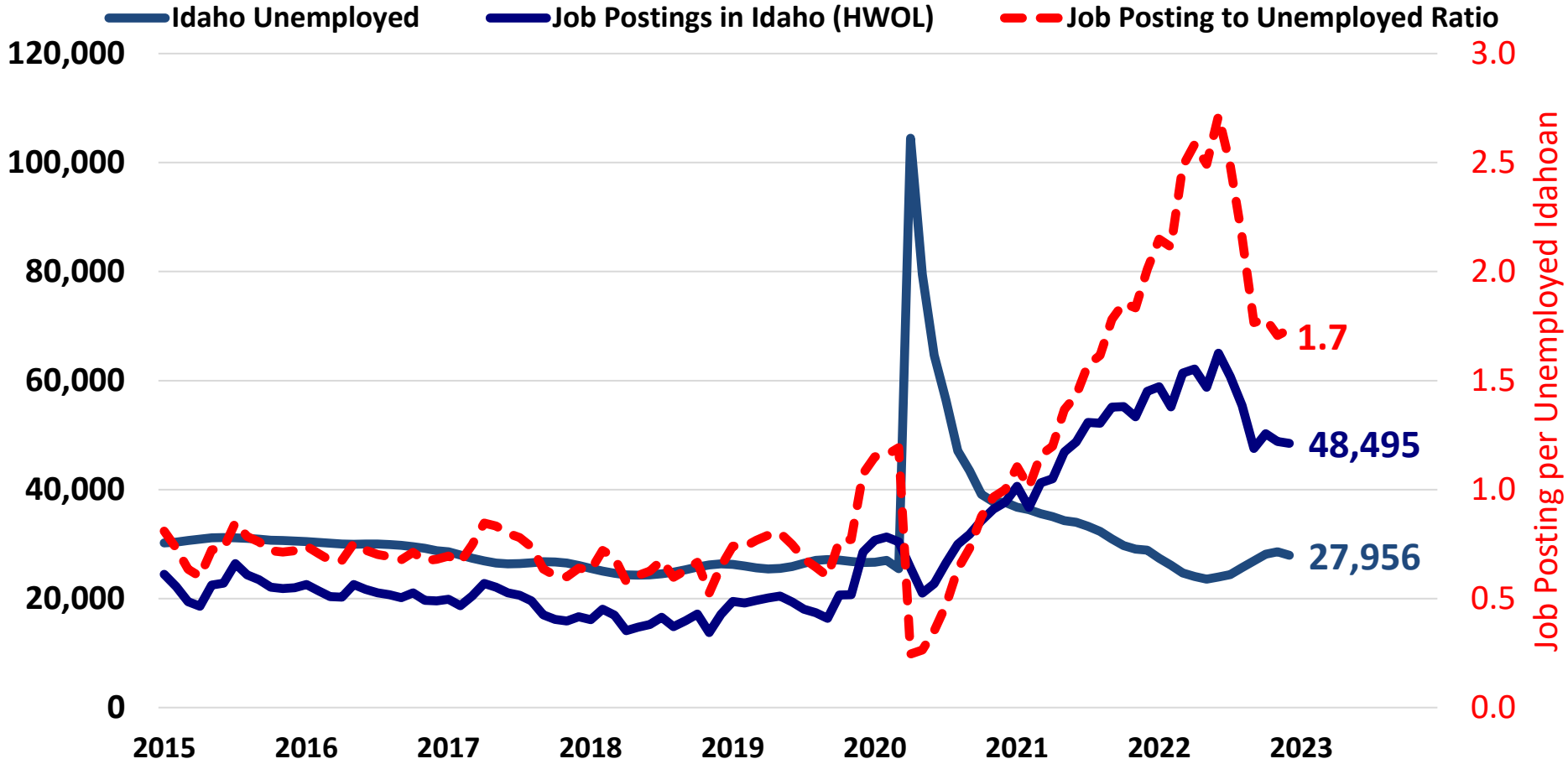
Idaho and other top states, Change from Previous Peak to December 2022



Source: Idaho Department of Labor

Online Job Posting Index

Jobs in Idaho, January 2019 to December 2022



Source: Idaho Department of Labor

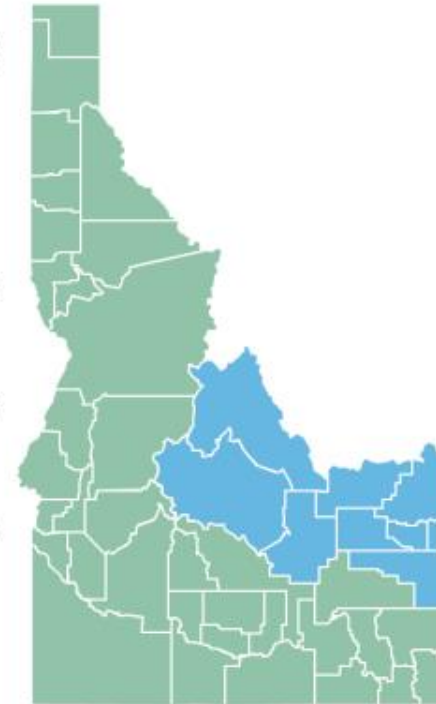
Labor Economists

Eastern Idaho Labor Force And Economic Profile

Last Updated: January 2023

Eastern Idaho Economic Overview

Civilian Labor Force (Dec 2022)	128,256
Unemployment Rate (Dec 2022)	2.0%
Population (2021)	255,908
Median Household Income (2021)	\$56,516
Per Capita Personal Income (2020)	\$45,082
Poverty Rate (2021)	12.8%



Resources

Labor market statistics
lmi.idaho.gov

Employer support
labor.idaho.gov/businesses

Unemployment benefits
labor.idaho.gov/claimantportal

Job seeker support
labor.idaho.gov/jobseeker

Local offices
labor.idaho.gov/officedirectory

Thank you.

Questions?