



1

INVASIVE SPECIES OF IDAHO

Program Budget

- Prior to FY18 – Invasive Species program operated on \$1.4 million/year budget, funded through the Invasive Species Sticker.
- FY18 (to current):
  - \$3,143,300 in ongoing appropriation from the General Fund
  - \$1,800,000 in one-time federal fund spending authority (WRDA)
  - \$1,500,000 base spending authority from the Invasive Species Fund
  - \$600K Station Building Enhancement
  - Other federal grants
    - BLM, USFS, USFWS

**Idaho Invasive Species Funding**

Funding Source	Percentage
Idaho General Fund	55%
Idaho Dedicated Fund (5 Sticker)	25%
US ACE WRDA (Inspection)	18%
US ACE WRDA (Monitoring)	1%
USFWS ANS Plan Grant	1%
US DOI BLM AIS Grant	1%

IDAHO

STATE DEPARTMENT OF AGRICULTURE

2

Attachment 1  
February 21, 2023

1




## Invasive Species Program Areas

- Prevention
  - Watercraft Inspection
  - Product Inspection
- Early Detection Monitoring
  - Plankton tow
  - Adult surveys
- Management and Control
  - Active control programs
  - Rapid response planning
- Education and Outreach
  - Public campaigns
  - Partnerships




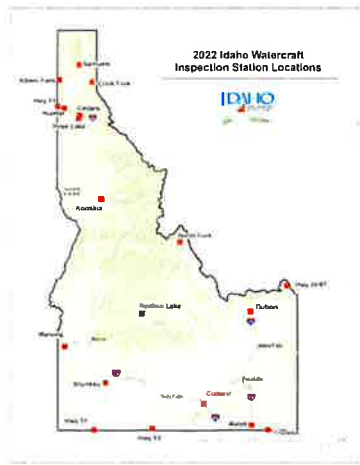



3



## 2022 Watercraft Inspection

- **14<sup>th</sup>** Year of the inspection program
  - **102,670** inspections
  - **1,068,612** from 2009-2022
- **36** Mussel fouled watercraft
  - **17** Destined to Idaho
- **19** Inspection stations
  - **8** Local station cooperators
- Extended night operations
  - **18** Hour (6AM-midnight)
    - Malad (I-15 N), Cedars (I-90W), Jackpot (HWY 93 N)
  - **24** Hour
    - Cotterell (I-84W)
- Law enforcement support
  - Local County
  - Idaho State Police



4

Attachment 1  
February 21, 2023

INVASIVE SPECIES

Inspection Station Cooperators

- Bear Lake Regional Commission
  - Garden City (Utah) & Laketown Canyon (Utah)
- Bonner Soil & Water Conservation District
  - Albeni Falls, Samuels & Clark Fork
- Bruneau River Soil & Water Conservation District
  - Bruneau & Marsing
- Franklin County
  - Franklin
- Kootenai-Shoshone Soil & Water Conservation District
  - I-90W Cedars, I-90E Huetter, Rose Lake, HWY 53

- Oneida Soil & Water Conservation District
  - I-15 N Malad
- Shoshone-Paiute Tribe
  - Duck Valley
- West Cassia Soil & Water Conservation District
  - I-84 W Cotterell
- ISDA operated stations
  - North Fork, Hwy 20/87, Hwy 93 Jackpot, Kooskia, Dubois, Redfish

Thank you to our 2022 station cooperators!



5

INVASIVE SPECIES

Law Enforcement Support

- ▶ Boater safety and compliance
- ▶ Focused during hours of high traffic
- ▶ Inspectors contact dispatch as needed

- Idaho State Police
- Bonner County Sheriff
- Cassia County Sheriff
- Kootenai County Sheriff
- Oneida County Sheriff
- Owyhee County Sheriff













6



Attachment 1  
February 12, 2023




INVASIVE SPECIES OF IDAHO

## Roving Inspection Crew

- Watercraft inspection & boater education
- Primarily at high use boat launches and boating events
  - Races, expos, regattas, peak holiday weekends, etc.
- Thursday-Sunday work week
- Motorized and non-motorized users
  - Headwater launches (i.e. Boundary Creek)
- 5 regional inspection crews
  - Boise
  - Idaho Falls
  - Post Falls
  - Twin Falls
  - Sandpoint



7

INVASIVE SPECIES OF IDAHO

## Inspection Data Dashboard


2022 Idaho Watercraft Inspection Stations Dashboard

Filter By Station  
All Stations

Filter by Date  
All Dates

### Weeds on Watercraft?

# 582



### Law Enforcement Returned

# 1,792

### From Infested Water

# 2,015

### Total Hotwashed Watercraft

# 665

### Total Watercraft Inspected

# 102,670

### Inspections by Station

Station	Inspections
Idaho Falls	7.46
Blaine	2.16
Coeur d'Alene	13.24
Clark Fork	4.54
Coonley	1.14
Dufur	0.82
Franklin	1.88
Hunter	1.48
May 20 07	4.75
May 01	1.03
May 01	1.24
May 03	1.91
Idaho Falls Regional Office	7
Idaho Falls Roving Crew	4.42
Kimberly	1.99
May 01	0.51
May 01	0.14
North Fork	1.91
Post Falls Regional Office	0.02
Post Falls Roving Crew	1.24
Refuge Lake	1.24
Rose Lake	1.48
Sawtooth	1.48
Twin Falls Regional Office	0


### Inspections From Fouled Waters

Inspection Station = May 03  
Date and Time = Thu May 03 2022 08:00 GMT-07:00 (Pacific Standard Time)  
Watercraft Type = Fishing Boat  
Days in Water = 2  
Days out of Water = 2  
Name of Waterbody = ~~Refuge Lake~~ ~~Refuge Lake~~  
Destination State = Washington

Inspection Station = Twin Falls Regional Office  
Date and Time = Tue Apr 05 2022 19:25:00 GMT-07:00 (Pacific Standard Time)  
Watercraft Type = Fishing Boat  
Days in Water = 30  
Days out of Water = 0  
Name of Waterbody = ~~Refuge Lake~~ ~~Refuge Lake~~  
Destination State = Idaho

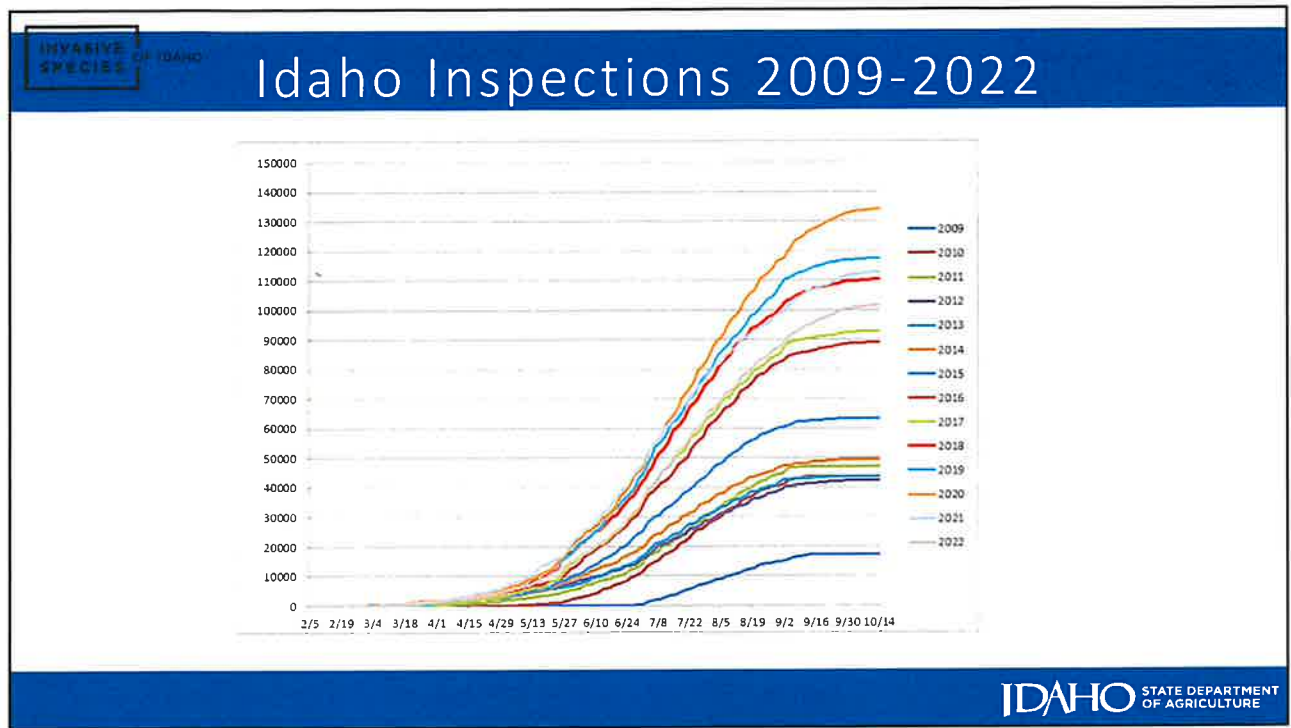
Inspection Station = May 03  
Date and Time = Mon May 03 2022 18:30:00 GMT-07:00 (Pacific Daylight Time)  
Watercraft Type = Rock Boat  
Days in Water = 7  
Days out of Water = 3  
Name of Waterbody = ~~Refuge Lake~~ ~~Refuge Lake~~  
Destination State = Oregon

Inspection Station = May 03  
Date and Time = Mon May 03 2022 18:45:00 GMT-07:00 (Pacific Daylight Time)  
Watercraft Type = Fishing Boat  
Days in Water = 70

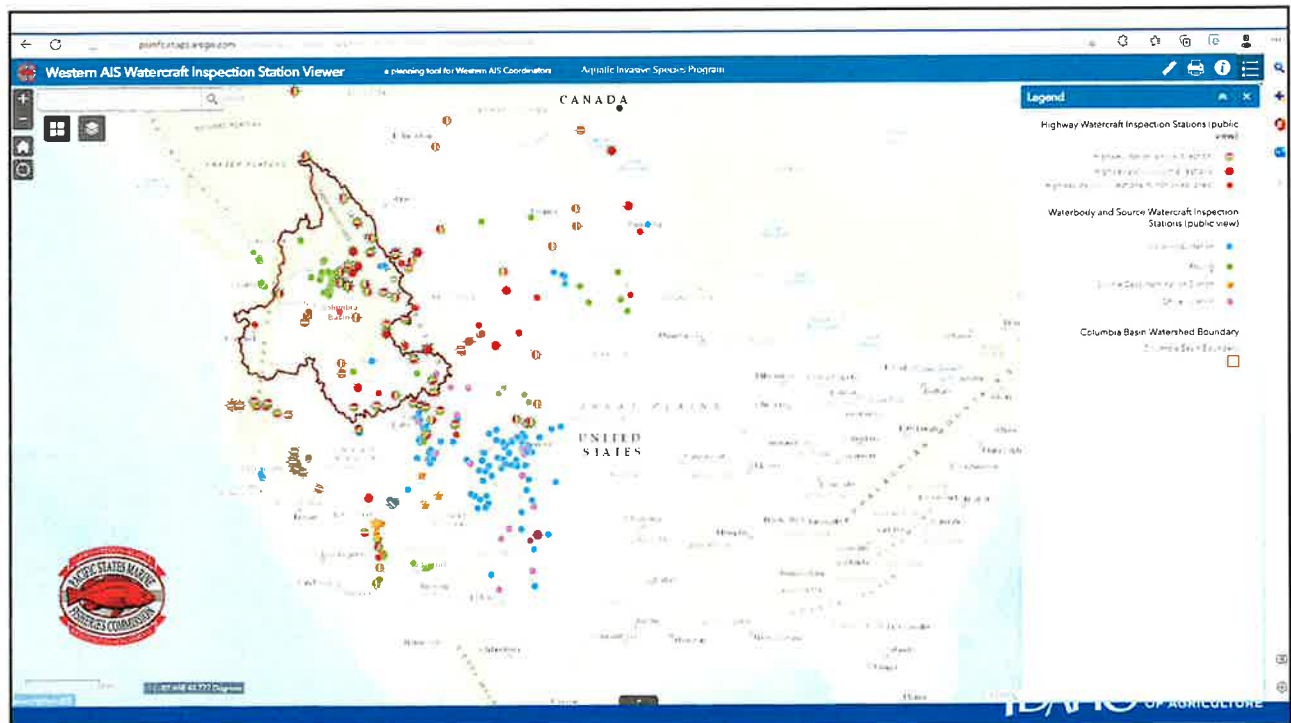


8

Attachment 1  
February 21, 2023



9



10

Attachment 1  
February 21, 2023 5





14

Attachment 1  
February 21, 2023

INVASIVE  
SPECIES

OF IDAHO

## Western Coordination

- Several “nets” provide coverage for Idaho and Columbia River Basin
- Minimum inspection protocol standards
- Regional networking
  - Neighbor State(s)
  - Regional Database
  - Transportation permits
  - “Call Before You Haul” program
- Information passed on to inspection station(s) & managers
- ISDA online decontamination request form
- Decontamination may be appropriate at destination

15

INVASIVE  
SPECIES

OF IDAHO

## Early Detection Monitoring

- 2022- 13<sup>th</sup> year of monitoring in Idaho
- No Quagga/Zebra Mussel detections!
- ESRI Survey123 data form (Android or iOS)
- Focused survey blitz strategy to manage workload
- Assistance from partners (Idaho Power, Tribes, Lemhi County & others)
- Activate Idaho rapid response plan if detection occurs

Idaho Waterways Survey  
A Standard Operating Procedure for Aquatic Plant & Invasive Species

16

Attachment 1  
February 21, 2023



INVASIVE SPECIES OF IDAHO

## Early Detection Monitoring

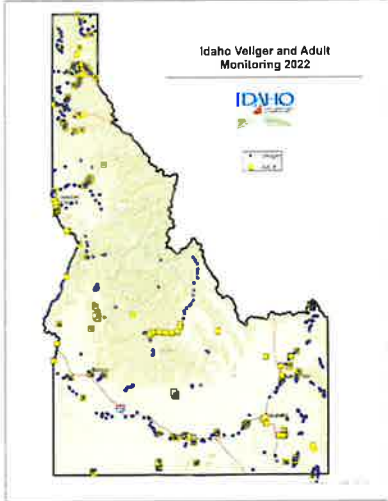
**Veliger Monitoring (microscopy)**

- **1,650** plankton samples collected from **80** waterbodies
  - Multiple sample events, bi-weekly, per waterbody
  - Priority overnight shipment
  - 2 week turnaround for lab analysis

**Adult Monitoring (visual)**

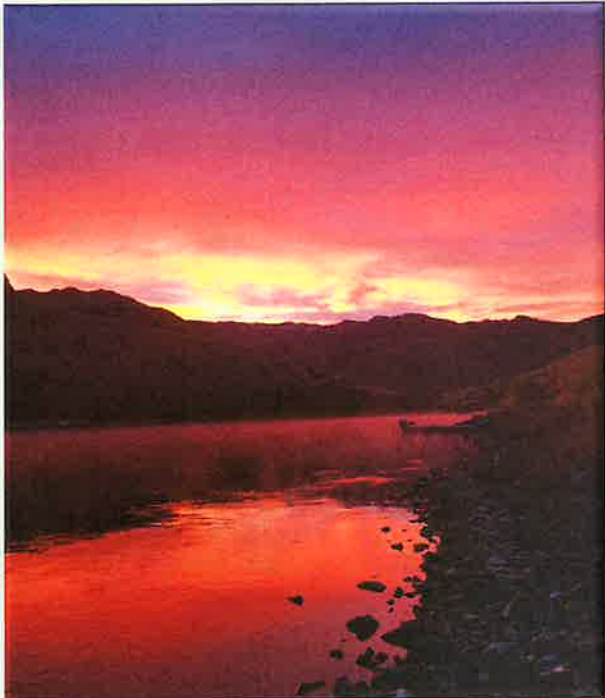
- **~1,500** surveys conducted
- Reservoir drawdown, substrate and benthic grab sampling


Shift monitoring focus for aquarium dump sites (moss ball)



**IDAHO** STATE DEPARTMENT OF AGRICULTURE

17



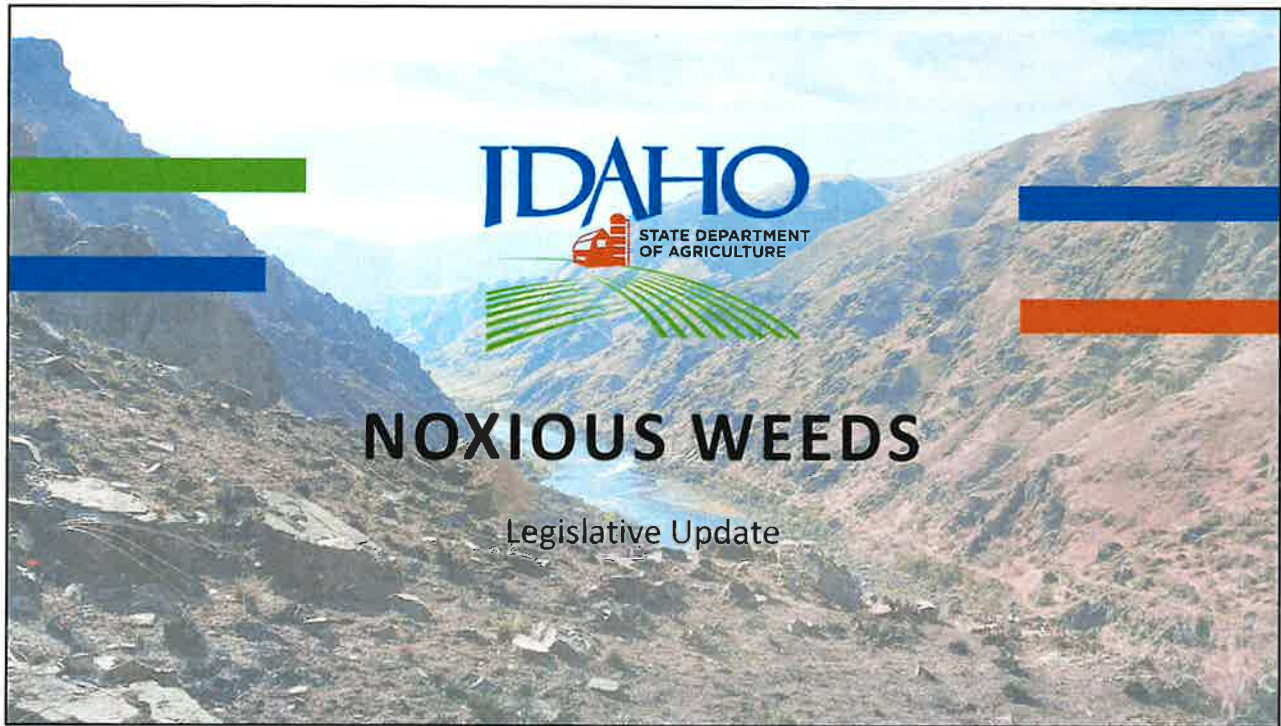


## THANK YOU

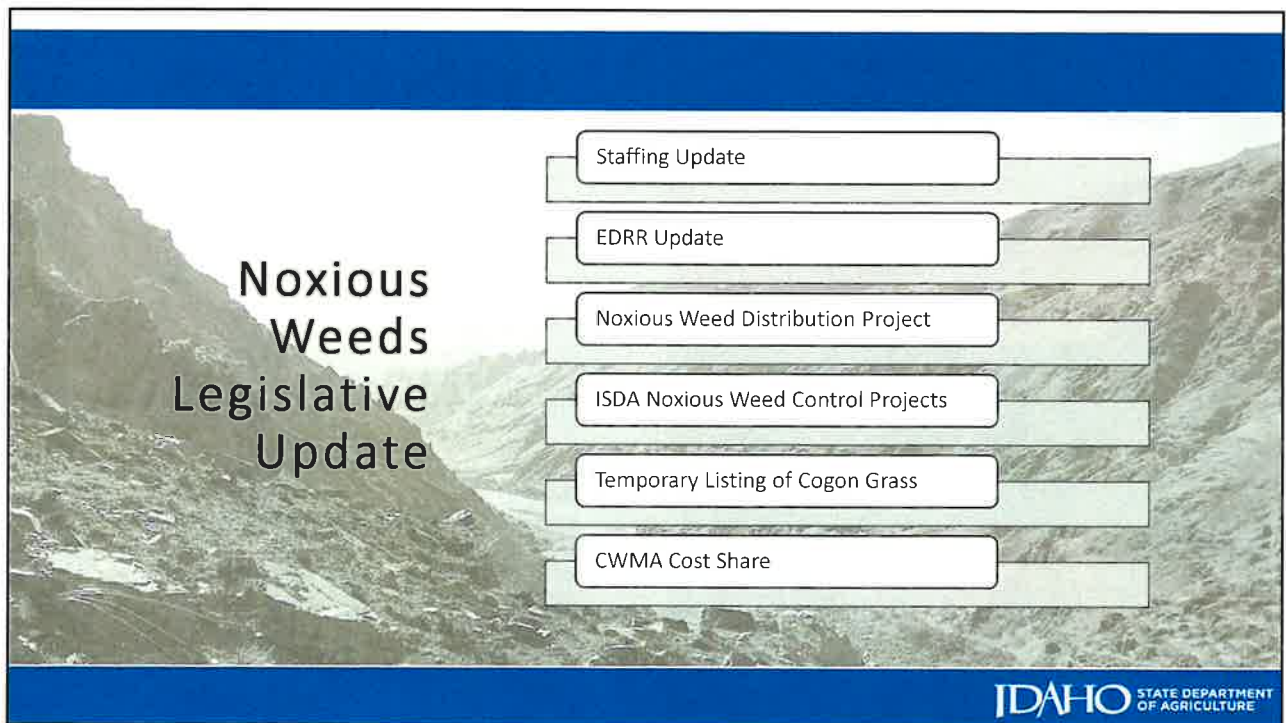
Nic Zurfluh  
 Section Manager- Invasive Species Coordination and Outreach  
 Idaho State Department of Agriculture  
 208.332.8686 office  
 208.631.9574 cell  
[nicholas.zurfluh@isda.idaho.gov](mailto:nicholas.zurfluh@isda.idaho.gov)  
[invasivespecies.idaho.gov](http://invasivespecies.idaho.gov)

18

Attachment 1  
February 21, 2023



19



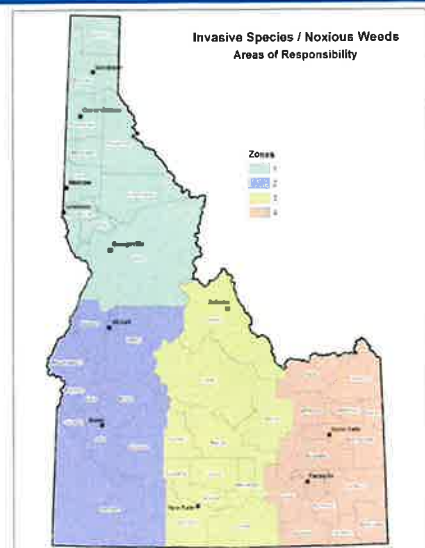
20

Attachment 1  
February 21, 2023

## Staffing Update

- During the 2021-22 Legislative session, the Plants division was approved for 5 additional staff for the Noxious weeds and Invasive Species Programs. Those positions are working towards being filled

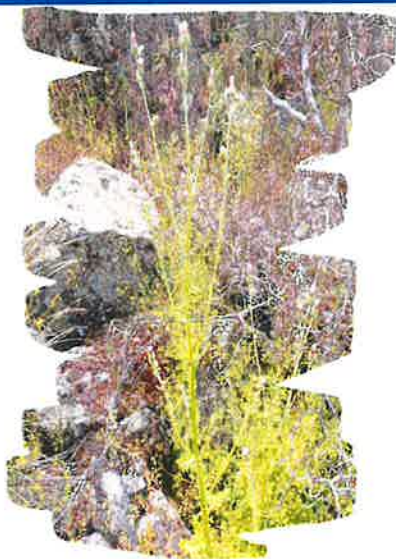
Region	Noxious Weeds	Invasive Species
North	Jenny Roman <i>Tech 3- Ryan Hanna</i>	Paul Rhoades <i>Tech 3- Vacant</i>
West	Bethany Muffley <i>Tech 3- Mark Devey</i>	Sam Kennedy
Central	Michael Cellan	Aaron Ursenbach
East	Madi Patterson <i>Tech 3- Glenn Mabey</i>	Cole Morrison <i>Tech 3- Abbie Broersma</i>
Statewide	Saul Teska- GIS	Sam Kennedy-GHMC
Section Manager	Jeremy Varley	Nic Zurfluh



IDAHO STATE DEPARTMENT OF AGRICULTURE

21

## Idaho Noxious Weeds



- Tittle 22, Chapter 24 Noxious Weeds- establishes powers and duties related to noxious weeds

Entity	Duties	Powers
State	<ul style="list-style-type: none"> <li>Determine &amp; Compile a list of noxious weeds</li> <li>Employ statewide coordinator</li> <li>Assist all landowners, managers, &amp; lessees in Idaho</li> </ul>	<ul style="list-style-type: none"> <li>Require annual work information from counties and state agencies</li> <li>Initiate cooperative agreements</li> <li>Temporarily list species for 15 months</li> </ul>
County	<ul style="list-style-type: none"> <li>Establish a coordinated noxious weed program</li> <li>Employ a county weed superintendent</li> <li>Provide operational costs for superintendent</li> </ul>	<ul style="list-style-type: none"> <li>Can quarantine lands with noxious weeds</li> <li>Stop movement of noxious weeds</li> <li>Implement enforcement action</li> <li>Levy taxable properties for funding</li> </ul>
Private Citizens	<ul style="list-style-type: none"> <li>Duty and responsibility to control noxious weeds</li> <li>Provide for cost of controlling noxious weeds</li> <li>Must pay county if enforcement action is used</li> </ul>	<ul style="list-style-type: none"> <li>Can challenge costs incurred by the county with the Director within 30 days</li> <li>If served a notice can file an appeal with court commissioners within 2 days</li> </ul>

IDAHO STATE DEPARTMENT OF AGRICULTURE

22

Attachment 1  
February 21, 2023



## Idaho Noxious Weeds



- Idaho Code 02.06.09 Rules Governing Invasive Species & noxious Weeds, Sub-Chapter B-Lists Species based on category
  1. Prohibited Genera (4)
  2. Early Detection Rapid Response (21)
  3. Control (23)
  4. Contain (26)
- Early Detection Rapid Response (21)
  - 10 Terrestrial Species
  - 11 Aquatic Species
- Only 9 EDRR Species have active infestations in Idaho. Lets discuss 2 of them.....

**02. Statewide EDRR Noxious Weed List.** If any of the listed plants (Subsection 220.02) are found to occur in Idaho, they shall be reported to the Department within ten (10) days following positive identification by the University of Idaho or other qualified authority as approved by the Director. These weeds shall be eradicated during the same growing season as identified.

**IDAHO** STATE DEPARTMENT OF AGRICULTURE

23

## SQUARROSE KNAPWEED *CENTAUREA VIRGATA* SPP. *SQUARROSA*



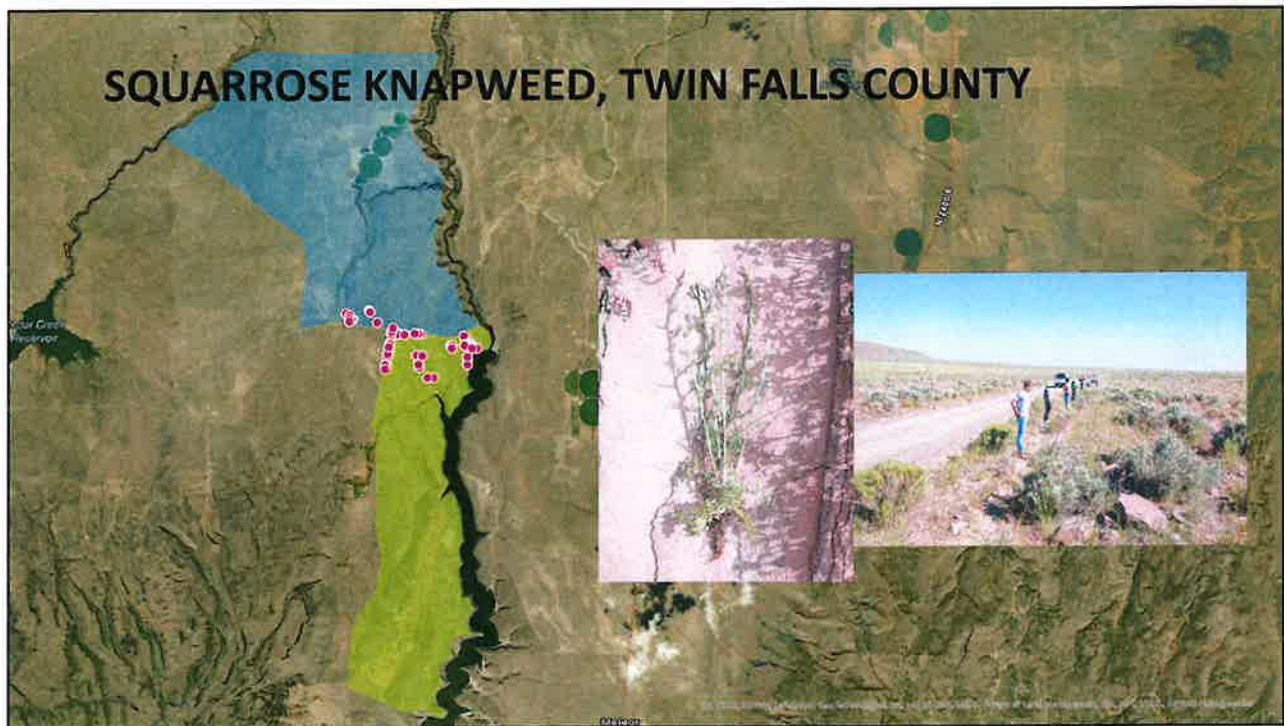
UCA1459278



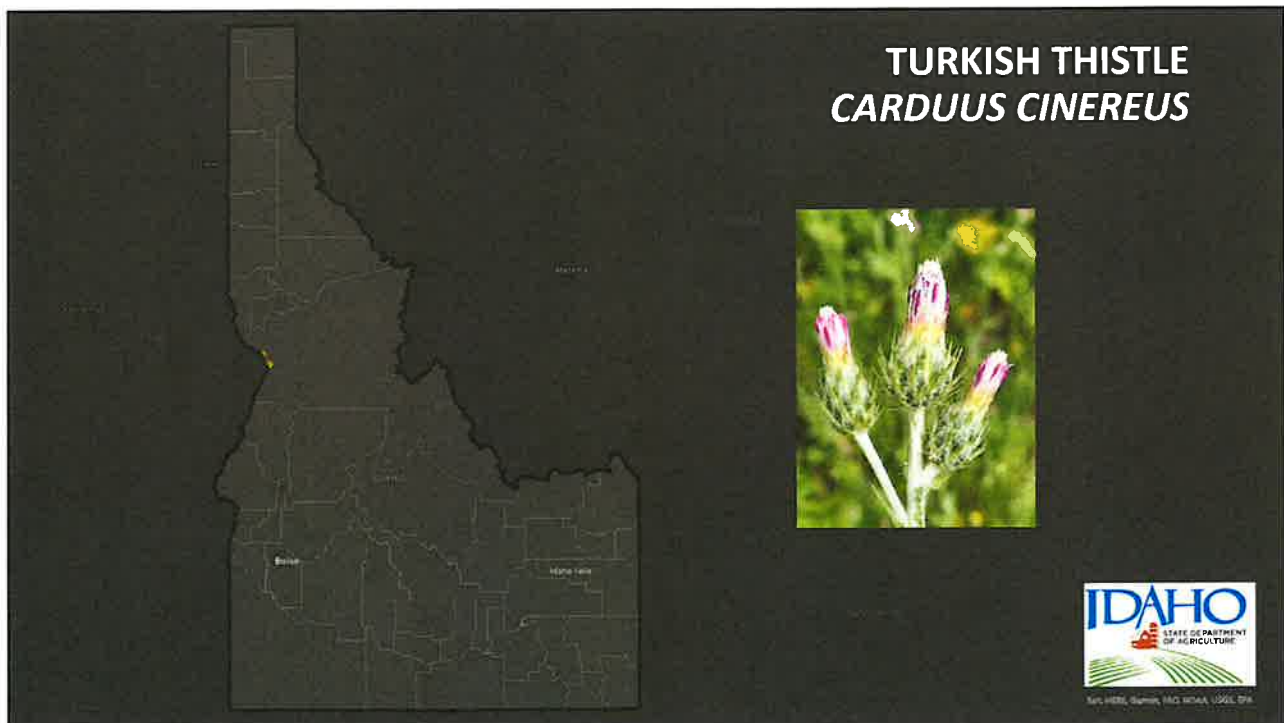
RHS, HERS, Gurney, KNO, WGA, CICE, 1991

24

Attachment 1  
February 21, 2023



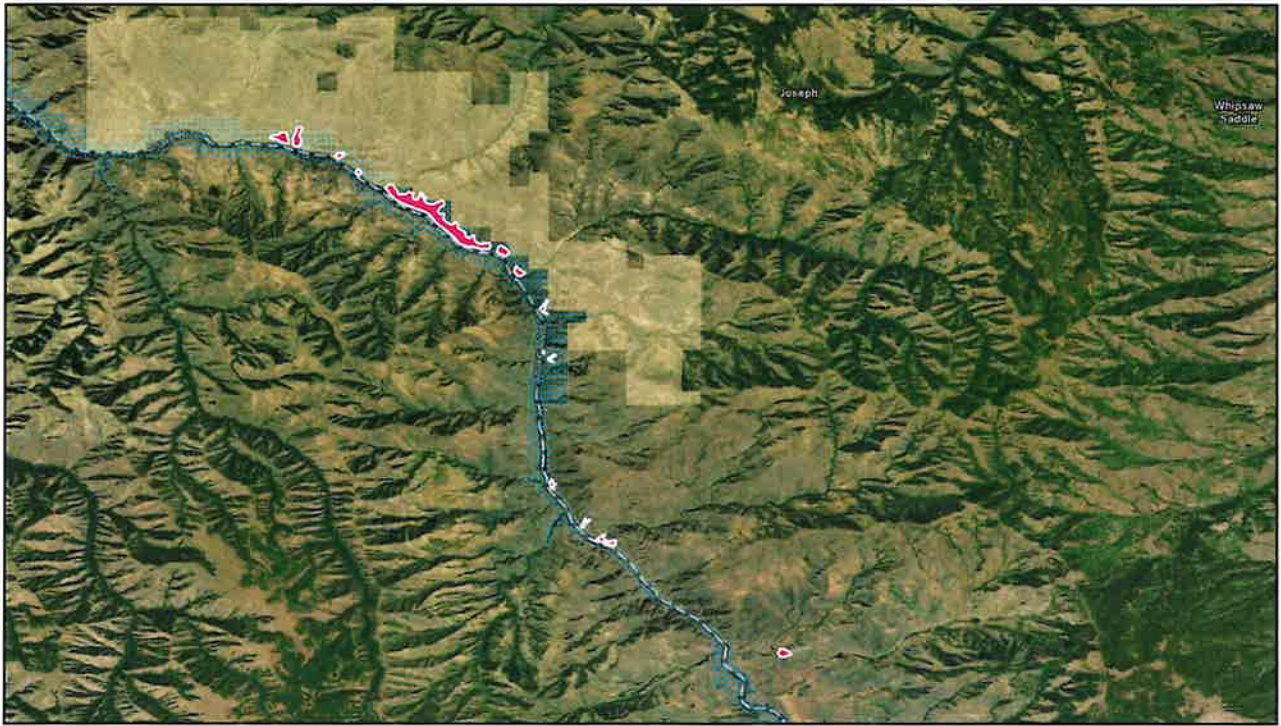
25



26

Attachment 1  
February 21, 2023





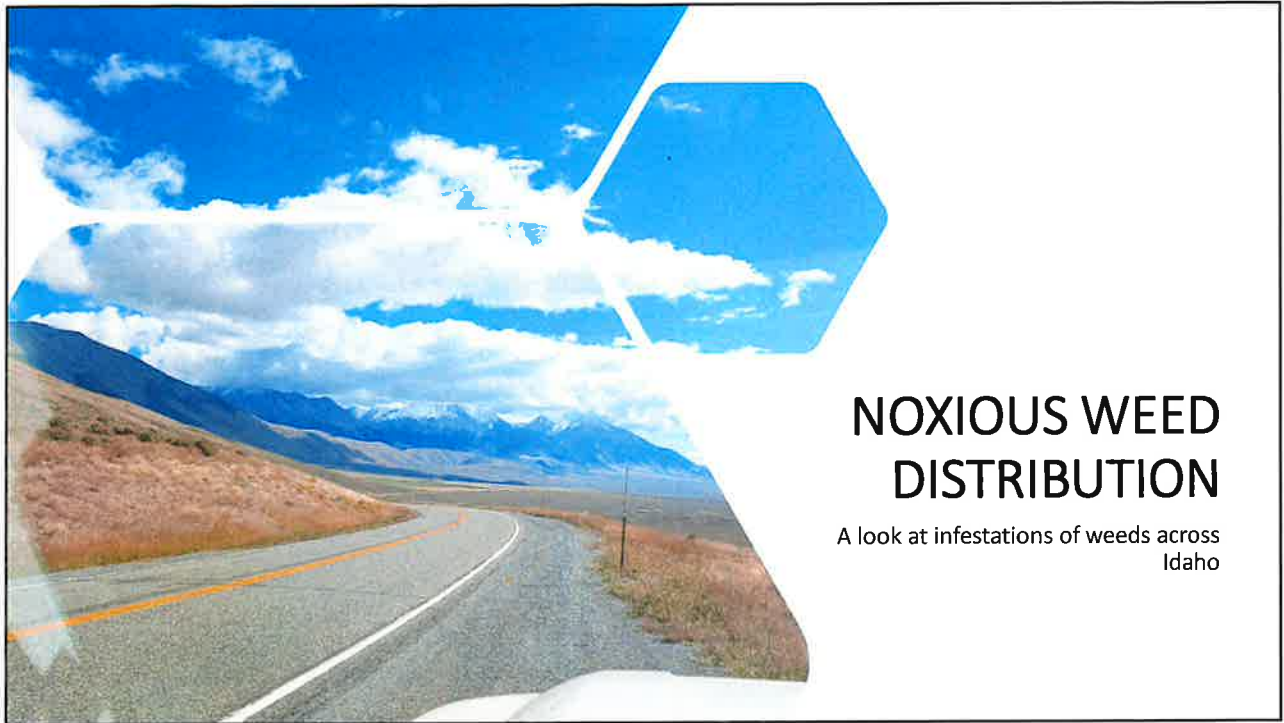
27




28

Attachment 1  
February 21, 2023





29



## NOXIOUS WEED DISTRIBUTION

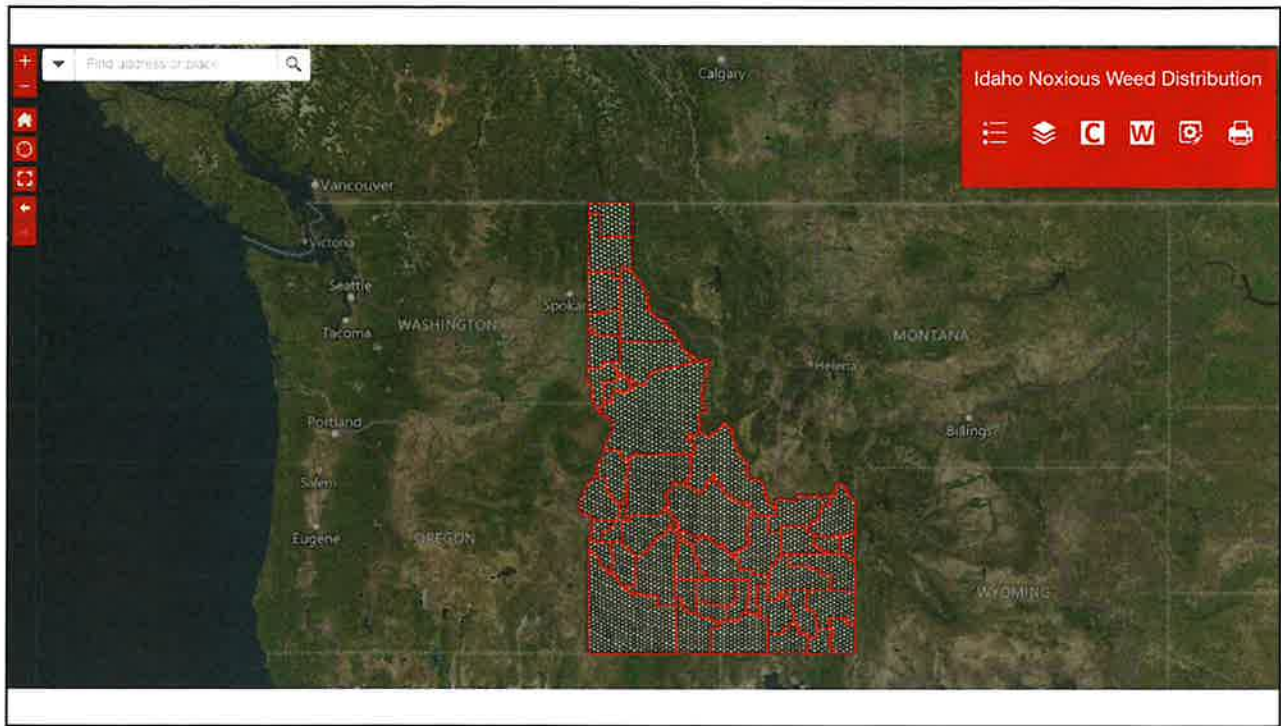
- ISDA is in the process of completing the 4<sup>th</sup> iteration of this project

STATE OF IDAHO  
DEPARTMENT OF LAND AND WATER  
INVESTIGATION  
NOXIOUS WEEDS

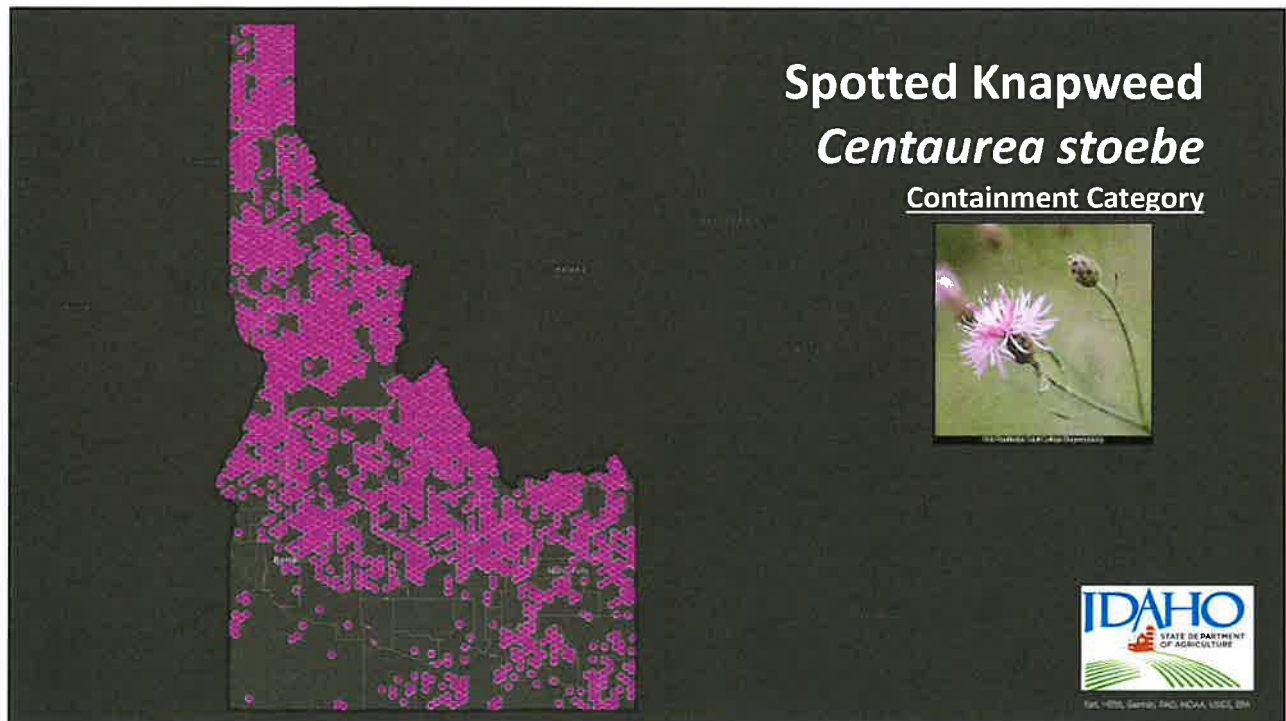
NOXIOUS WEEDS IN THE STATE OF IDAHO  
A. Introduction  
B. Methods  
C. Results  
D. Discussion  
E. Conclusions  
F. References  
G. Appendix  
H. Glossary  
I. Index

30

Attachment 1  
February 21, 2023



31



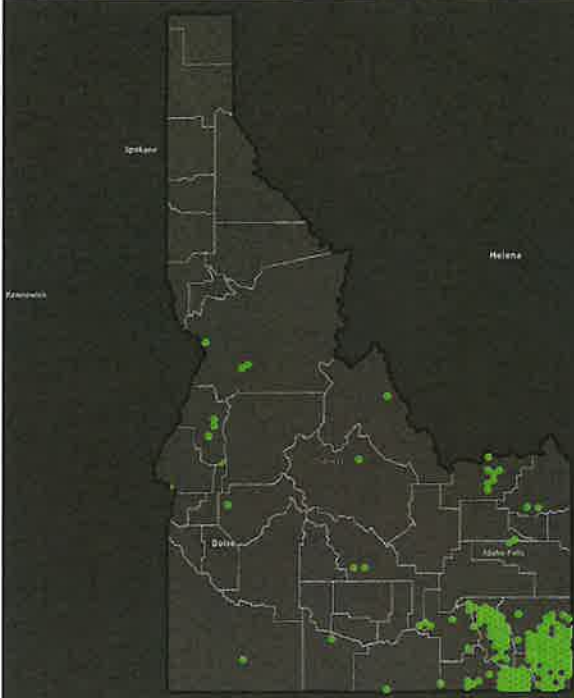


32

Attachment 1  
February 21, 2023

## Dyer's Woad

### *Isatis tinctoria*

Control Category

Ext. HDB, Germis, FAD, BDA, USDB, EPA

33

### OXEYE DAISY

*Leucanthemum vulgare*  
Asteraceae, the sunflower family  
Category: Containment

FACTSHEET INFORMATION

**Summary of Invasiveness**

- Oxeye daisy is an invasive wildflower that can form dense stands in pastures and meadows, outcompeting native flora reducing biodiversity and degrading pasture quality
- It produces a large number of seeds and can regenerate from rhizome fragments, making control difficult

**Description**

- Perennial with numerous stems arising from base, growing up to 5 feet tall
- Roots arise from a short, creeping rootstock with many adventitious roots. Root tips can be reddish in color
- Basal leaves are toothed and spatula-shaped, upper leaf stalks are short and clasp the stem
- Solitary, 1-1½ inch wide flower heads are composed of white ray and yellow disk flowers, resembling a daisy
- Seeds are ribbed and dark brown to black

**Introduction and Movement**

- Oxeye daisy is native to Europe and western Asia and was likely introduced as a garden ornamental
- Inhabits disturbed areas, grasslands, meadows, pastures, and roadsides
- The plant reproduces by seed dispersal and vegetatively by rhizome, allowing it to be easily dispersed by wind, water, and grazing animals. It is also commonly found as a contaminant in grass seed and wildflower mixes

**Prevention Strategy**

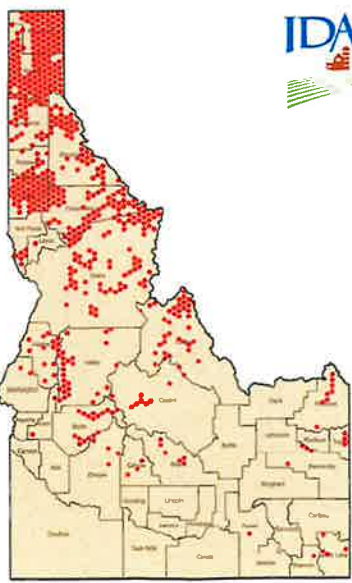

- To prevent accidental introductions, learn how to identify Oxeye daisy and eradicate infestations on your property
- When gardening, always research plants before planting and purchase seeds from licensed nurseries
- Always remove and properly dispose of all seed and plant materials on vehicles, clothing, shoes and pets before you exit or enter outdoor recreational sites
- Always Remember To **KNOW WHAT YOU GROW & KNOW IT OFF!**

Source:  
1. USDA, Invasive Species: Leucanthemum vulgare, from [www.aphis.usda.gov/plant\\_health/invasive\\_species/](http://www.aphis.usda.gov/plant_health/invasive_species/), 1/25/17  
2. USDA, National Wildlife Refuge System, Leucanthemum vulgare  
3. USDA, Invasive Species: Leucanthemum vulgare, from [www.aphis.usda.gov/plant\\_health/invasive\\_species/](http://www.aphis.usda.gov/plant_health/invasive_species/), 1/25/17

FOR ADDITIONAL INFORMATION, PLEASE VISIT: [INVASIVESPECIES.IDAHO.GOV](http://INVASIVESPECIES.IDAHO.GOV)  
TO REPORT INVASIVE SPECIES IN IDAHO, PLEASE CALL 1-877-236-8876

### OXEYE DAISY

DISTRIBUTION MAP

34

Attachment 1  
February 21, 2023





35

## CONTROL PROJECTS

The Aquatic Species that ISDA actively worked on either by staff directly or through contracted service providers:

- Eurasian watermilfoil
- Parrot feather milfoil
- Curly leaf pondweed
- Flowering Rush

36

Attachment 1  
February 21, 2023

## EURASIAN WATERMILFOIL

### Herbicide Application

- Hayden Lake 142.21 acres
- Pend Oreille Lake & River 42.12 acres
- Bear Lake 20.17 acres
- Priest Lake 4.92 acres



### Mechanical Removal

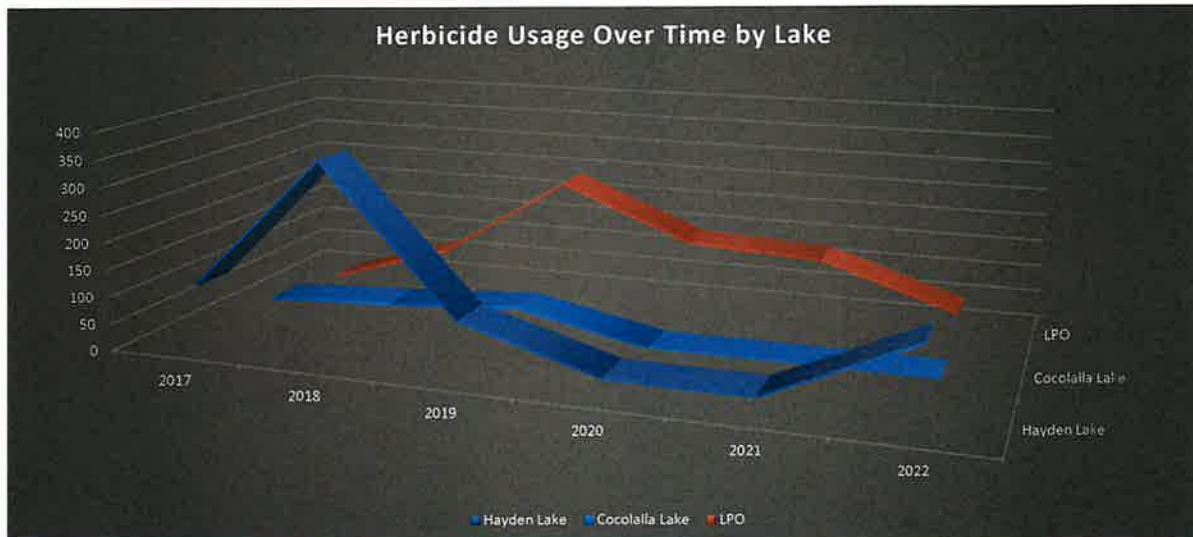
- Blue Heart\*
- Cocolalla Lake
- Clear Lake\*
- Hayden Lake
- Payette Lake
- Priest Lake

\*ISDA Staff



37

## Eurasian Watermilfoil Herbicide Treatments over Time



2022

IDAHO STATE DEPARTMENT OF AGRICULTURE

38

Attachment 1  
February 21, 2023



## PARROT FEATHER MILFOIL

### Herbicide Application

- Emmett Area infestation- 20 acres



### Mechanical Removal

- Ada County areas\*
- Blue Lakes\*
- Emmet Area infestations\*

\*ISDA Staff



39

## Parrot feather milfoil Gem County



40

Attachment 1  
February 21, 2023



## CURLY LEAF PONDWEED

### Herbicide Application

- Coeur d'Alene Lake- 0.4 acres



### Mechanical Removal

- Coeur d'Alene Lake



41

## FLOWERING RUSH

### Herbicide Application

- No herbicide applications made in 2022



### Mechanical Removal

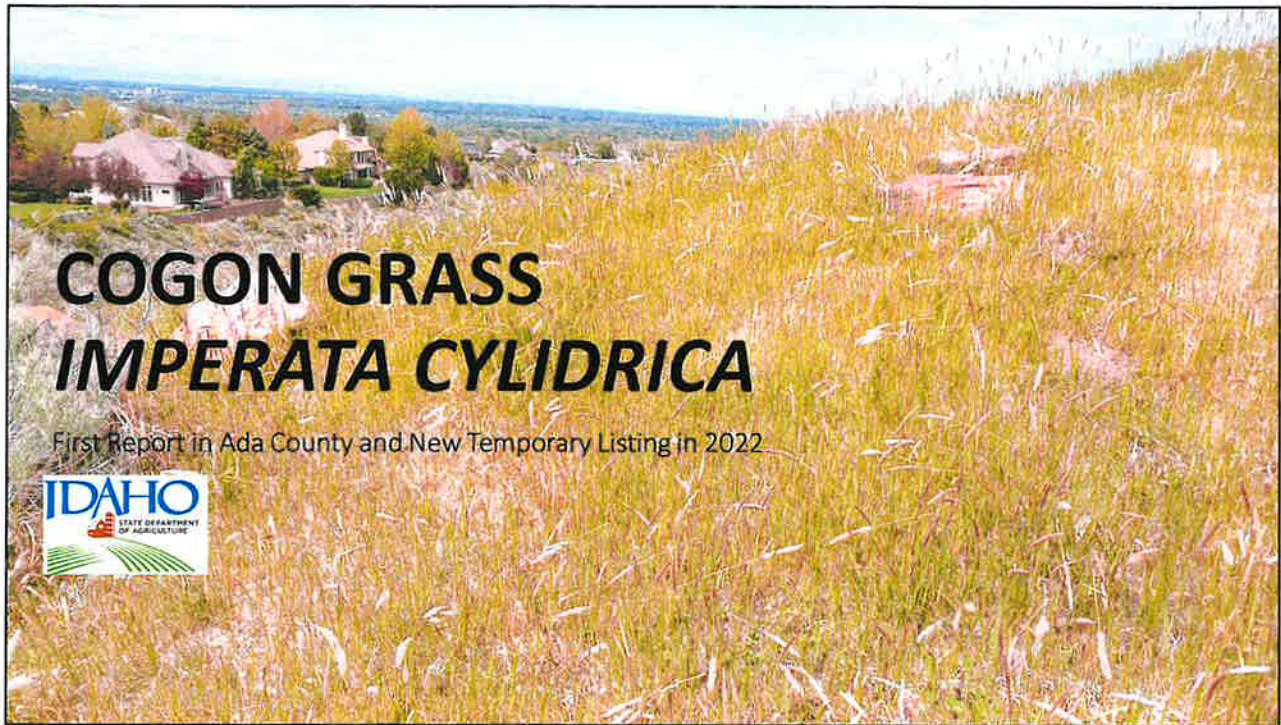
- Blackfoot Reservoir
- Lake Pend Oreille
  - Sandpoint
  - Farragut State Park\*

\*ISDA Staff

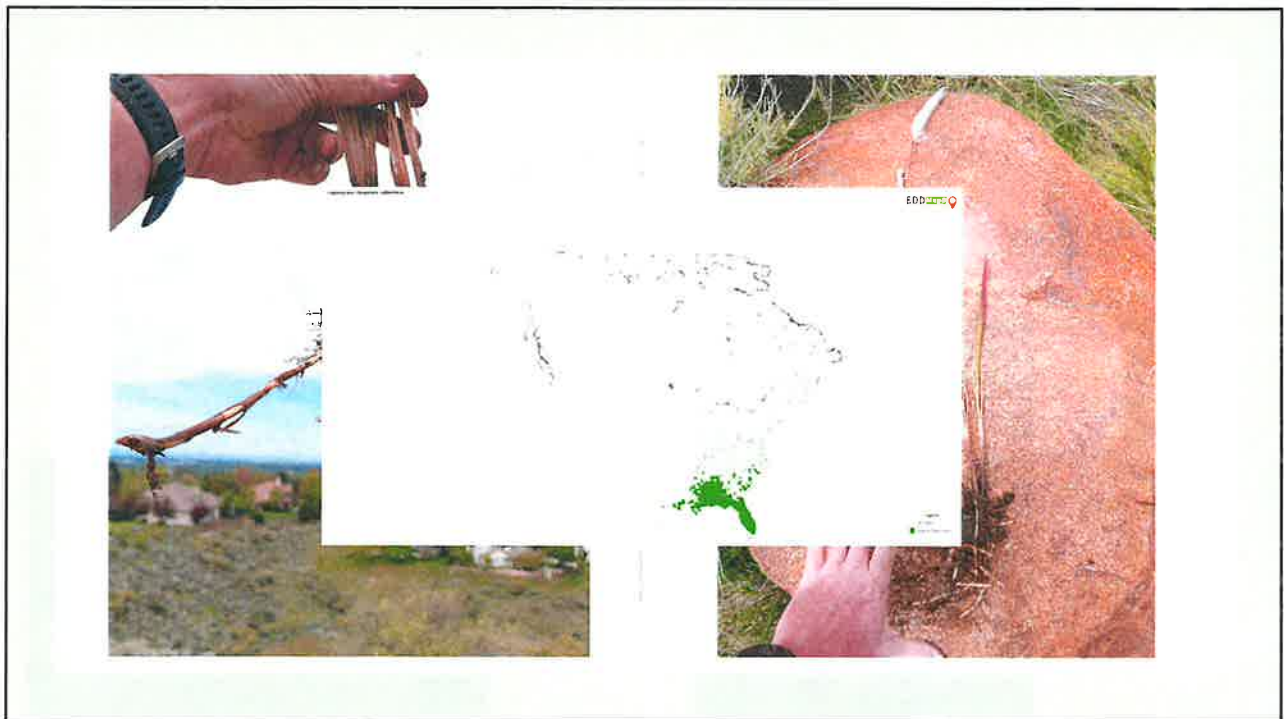


42

Attachment 1  
February 21, 2023



43



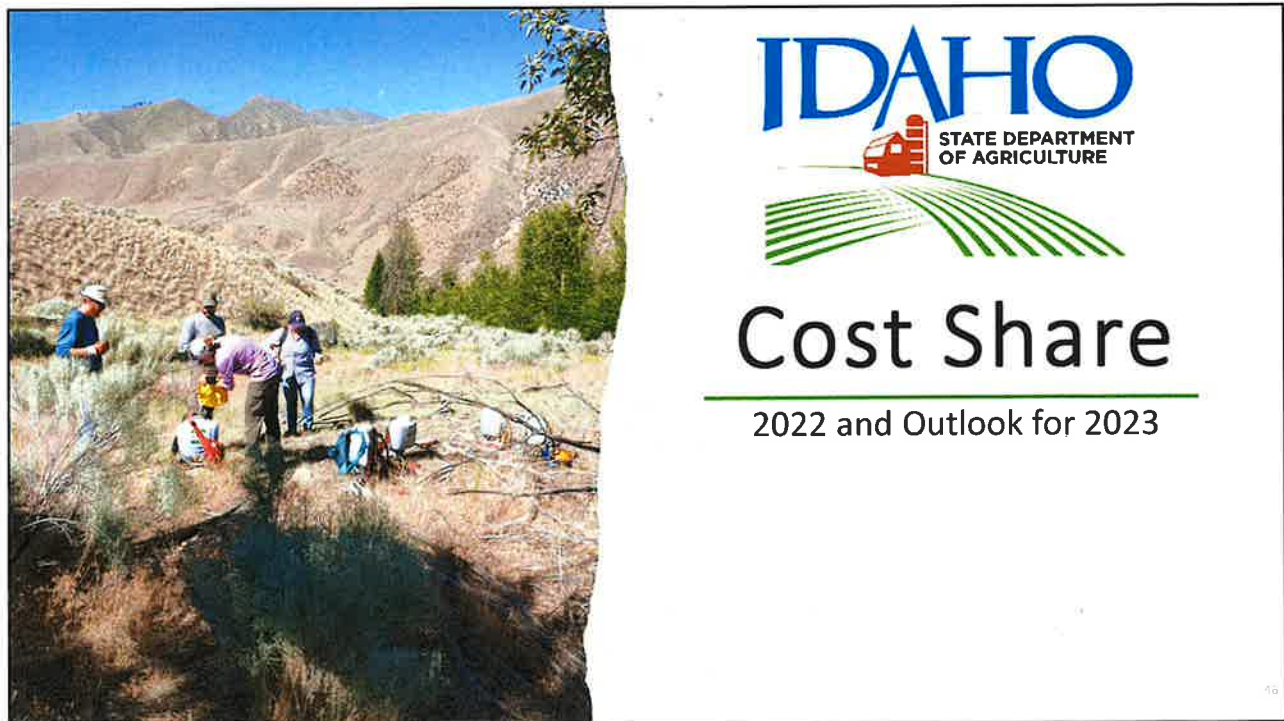
44

Attachment 1  
February 21, 2023





45



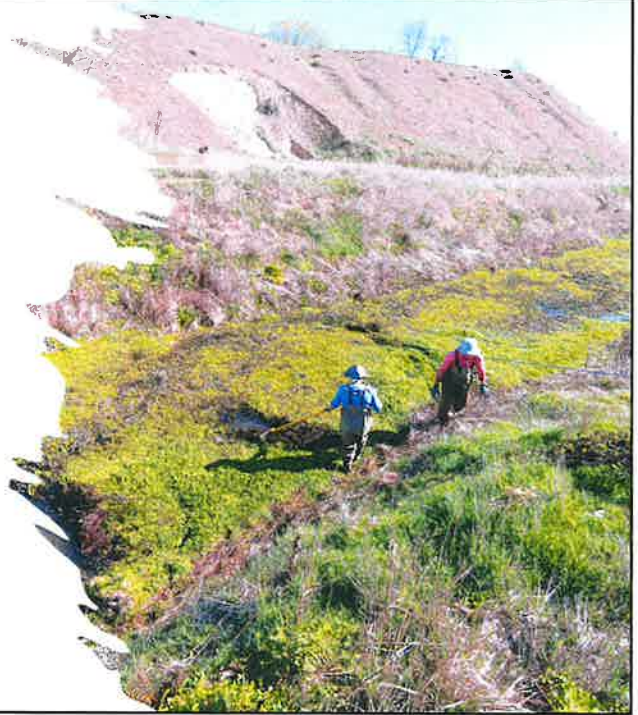
46

Attachment 1  
February 21, 2023



## 2022 COST SHARE OVERVIEW

- Awarded \$758,476.75 of State Funds
- Awarded \$ \$85,837.50
- Awarded 1 Special project for control of Parrot feather milfoil near Emmet Idaho \$14,890.05
- A total of 17 CWMAs participated in the 2022 Cost Share grant program



47

## 2023 CWMA COST SHARE OUTLOOK

- Applications where due December 30, 2022
- 16 CWMAs applied, for a total of \$887,352.40 in eligible projects
- Cost Share Review took place January 25-26, 2023
- Recommendations passed onto Director from Review Committee
- Awards to be finalized and sent to CWMAs via an Award Letter

Idaho State  
Department of Agriculture  
Noxious Weeds Cost Share  
Program Handbook  
2023  
Revised September 2022

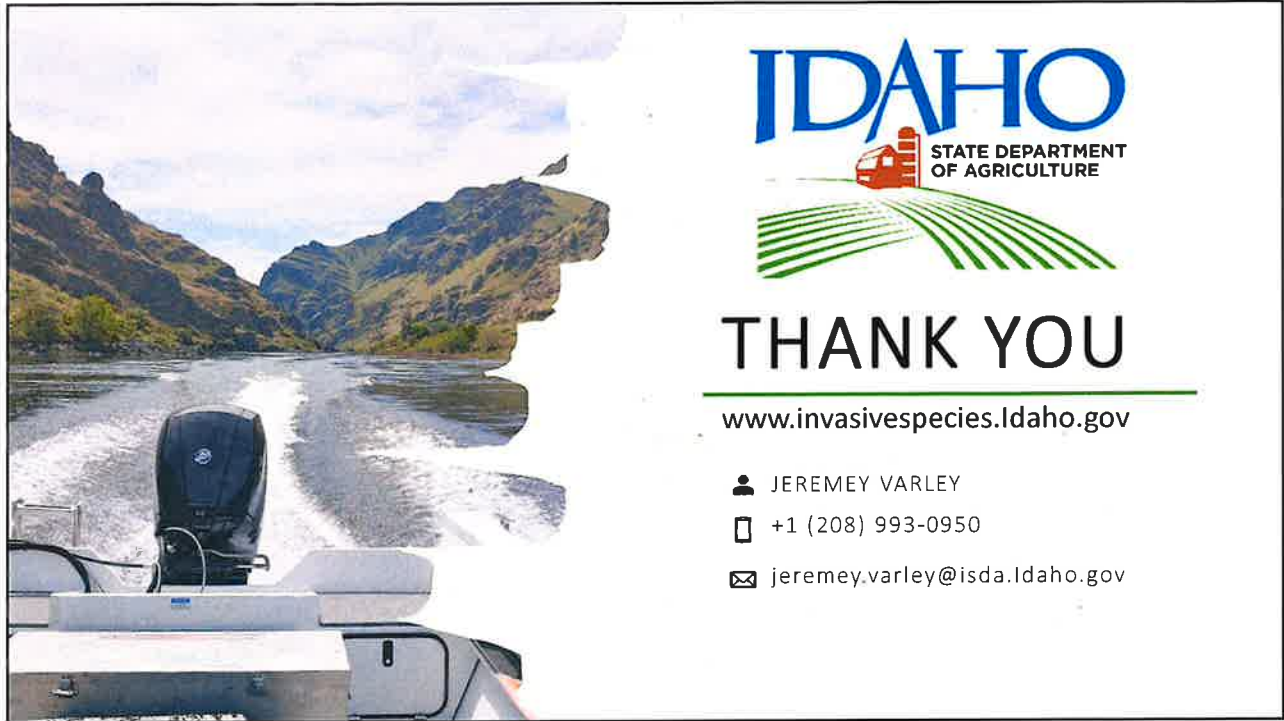


Idaho State Department of Agriculture  
Noxious Weeds Program  
2270 Old Penitentiary Road  
PO Box 7249  
Borise Idaho 83707  
(208) 332-6967  
FAX (208) 334-2640

<http://noxiousweedspecies.idaho.gov>  
[weedfs@idstate.idaho.gov](mailto:weedfs@idstate.idaho.gov)

48

Attachment 1  
February 21, 2023



49

Attachment 1  
February 21, 2023

