

Control Options of Invasive and Agricultural Pests

Idaho State Department of Agriculture

February 3, 2026
Attachment 2

Code Review – Agricultural Pest – State

Title 22, Chapter 20 – The Plant Pest Act - Relates to Agricultural Pests

- ISDA duty to control pests injurious to plants.
- (40) "Pest" means any insect, snail, rodent, nematode, fungus, virus, bacterium, microorganism, mycoplasma-like organism, weed, plant, or parasitic higher plant and any other pest as defined by rule or any of the following that is known to cause damage or harm to agriculture or the environment:
 - (a) Any infectious, transmissible or contagious disease of any plant; or any disorder of any plant which manifests symptoms or behavior which, after investigation and hearing, is found and determined by a duly constituted federal, state or local plant protection organization, to be characteristic of an infectious, transmissible or contagious disease;
 - (b) Any form of invertebrate animal life;
 - (c) Any form of plant life.
- 22-2019. INFESTATIONS -- CONTROL AND ERADICATION COSTS -- DEFICIENCY
- WARRANTS -- COOPERATION WITH OTHER ENTITIES AND CITIZENS. Whenever the director determines that there exists the threat of an infestation of grasshoppers, crickets or exotic plant pests on state-owned land, private, range or agricultural land, and that the infestation is of such a character as to be a menace to state, private, range or agricultural land, the director shall cause the infestation to be controlled and eradicated, using such funds as have been appropriated or may hereafter be made available for such purposes.

State Options – Ag Pest Cont.

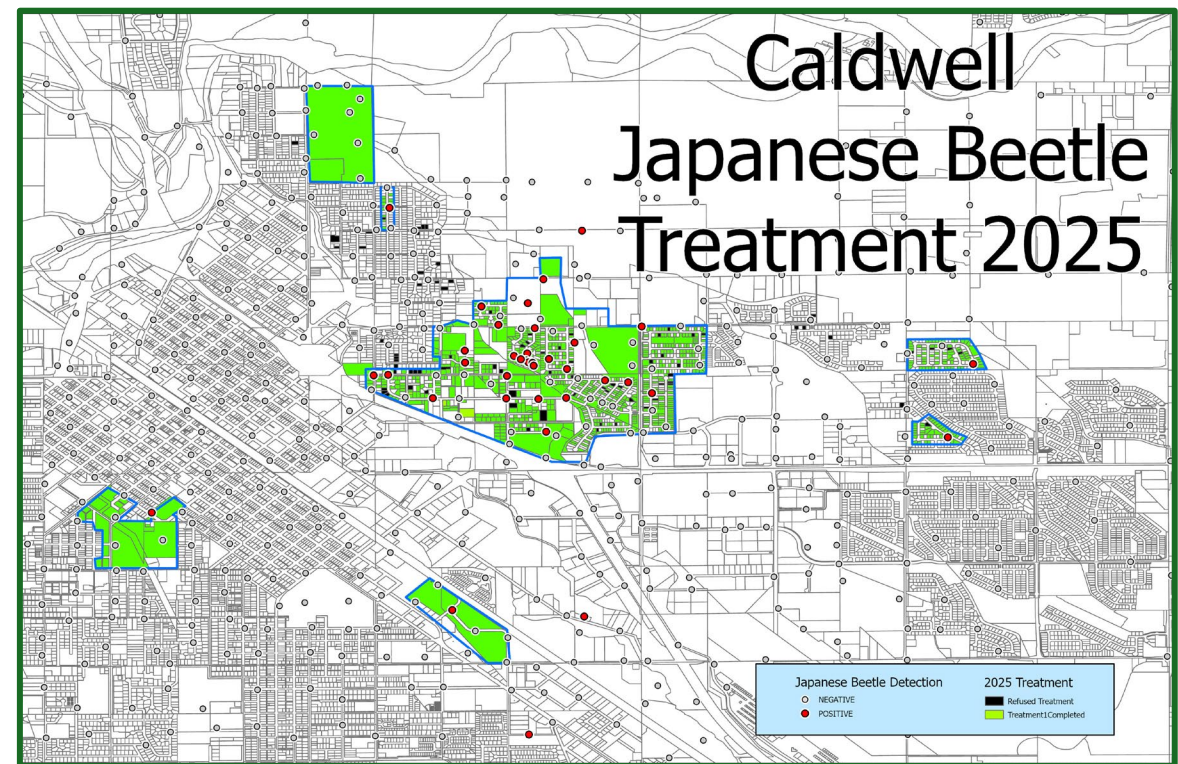
Title 22, Chapter 20 – Relates to Agricultural Pests



Example:

Japanese Beetle

- Agricultural pest with potential impact on crop production in Idaho
- Quarantine regulation on imported nursery stock to prevent introduction of Japanese beetle
- Statewide surveillance program funded through deficiency warrants
- When populations are identified, the infestation is defined and eradication plans are made
- ISDA designs treatment plans and implements using contractors and agency staff, landowner consent, collaboration with local government (cities, counties)
- Activities funded through deficiency warrant



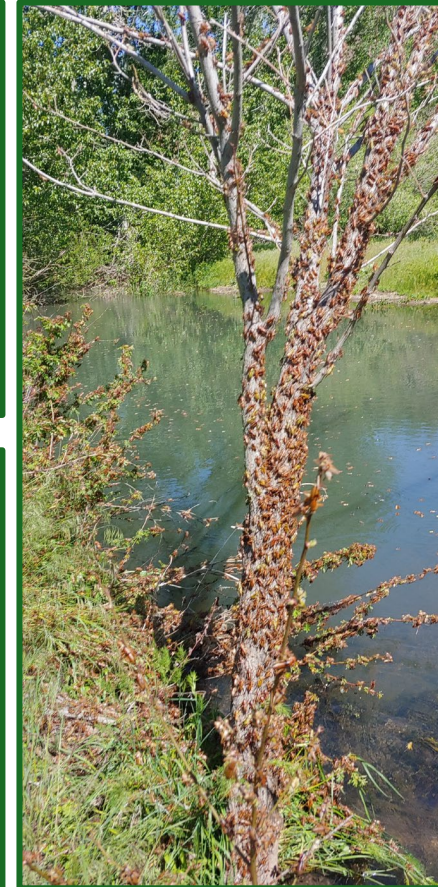
State Options – Ag Pest Cont.

Title 22, Chapter 20 – Relates to Agricultural Pests

Example:

Grasshopper/Mormon Cricket

- Section added in 2006 Legislative Session
- Statewide program to identify and respond to infestations of grasshoppers and/or Mormon crickets on private and state lands.
- Funded through a deficiency warrant
- ISDA staff identify infestations impacting range and agricultural land.
- ISDA distributes carbaryl bait to assist agricultural producers control infestations.
- Reimbursement of pesticide application to control infestation in crops where carbaryl bait is not an approved use.
- ISDA implements treatment projects along state and county road rights of way to limit impact on public safety.



Code Review – Agricultural Pest – County

Title 22, Chapter 20 – Relates to Agricultural Pests

- Grants "**full power and authority**" to any board of county commissioners to declare any rodent (which includes rats), or any other invertebrate organisms that feeds, preys, or destroys any livestock, natural grasses, or cultivated crops on any land within the county" to be an agricultural pest.
- Once the board declares something a pest, it can take all steps it deems necessary to control such pests and create special control districts in the county for the control of such pest and assess taxes.

State Options – Invasive Species

Title 22, Chapter 19 – Relates to Invasive Species

- Chapter created in 2008 Legislative Session
- **Administered by the Dept. of Ag.**, defines invasive species, and provides that the department, “May prevent and control all invasive species that may cause economic or environmental harm to the state.”
- Requires the director to take action to control and eradicate the invasive species when there is an infestation of invasive species that could be a menace to state, private, range, forest, or agricultural land or water.
- Authorizes the use of deficiency warrants against the General Fund.
- **List of Invasive Species in IDAPA 02.06.09**
 - Stakeholder and the public can petition the agency to add a species to the Invasive Species list, including by category (EDRR).
 - The agency may initiate a listing of a species, still requires rulemaking process.

State Options – Invasive Species Cont.

Title 22, Chapter 19 – Relates to Invasive Species

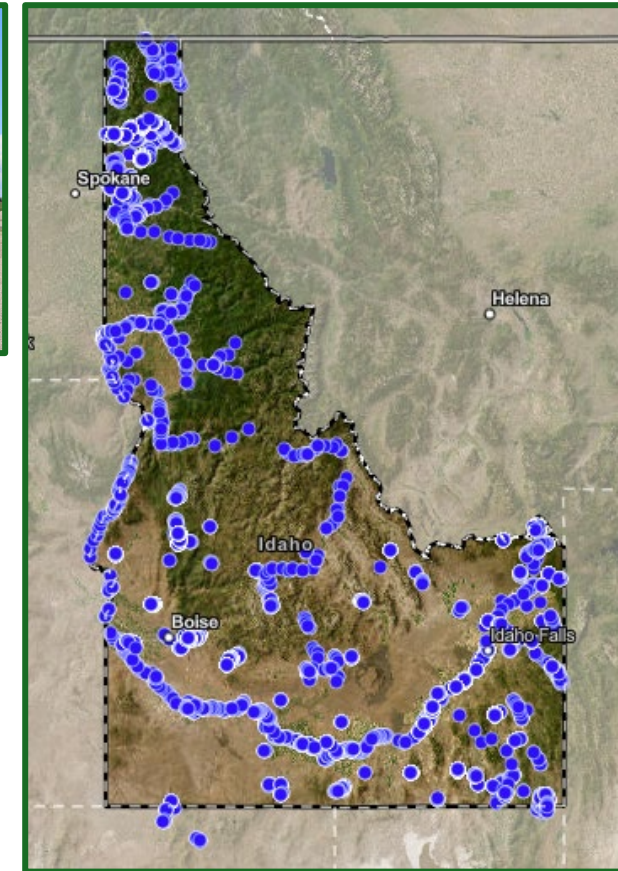
Examples:

Quagga Mussels

- Quagga mussels listed as an Emergency Detection Rapid Response species in IDAPA 02.06.09
- Statewide Prevention and Monitoring Program
- Rapid Response Plan for containment, treatment and eradication
- Statewide program costs appropriated through general fund, dedicated fund, and federal funds

Golden Mussels

- Agency proposal to add to the IS list, up for review by the Legislature and the public



Example – Red Eared Sliders

- Turtle popular in pet trade, but invasive and detrimental to native species when released in the wild
- Added to the Invasive Species List in 2008
- Permit process added to the rule in 2009 to allow for possession, with a prohibition for release and a disposal plan
- “Don’t Let It Loose” campaign to discourage the release of unwanted pets



State Options – Noxious Weeds

Title 22, Chapter 24 – Relates to Noxious Weeds (Plant Species)

- Chapter created in 1970 Legislative Session
- Noxious Weed defined by means of **any plant** having the potential to cause injury to public health, crops, livestock, or other property; which is designated as noxious by the Director
- Defines Duties and Powers for **Landowner, County, State**
- Weed Control Advisory Committee
- **List of Noxious Weeds in IDAPA 02.06.09**
 - Stakeholder and the public can petition the agency to add a species to the Noxious Weed list, including by category (EDRR).
 - The agency may initiate a listing of a species, still requires rulemaking process.

State Options – Noxious Weeds Cont.

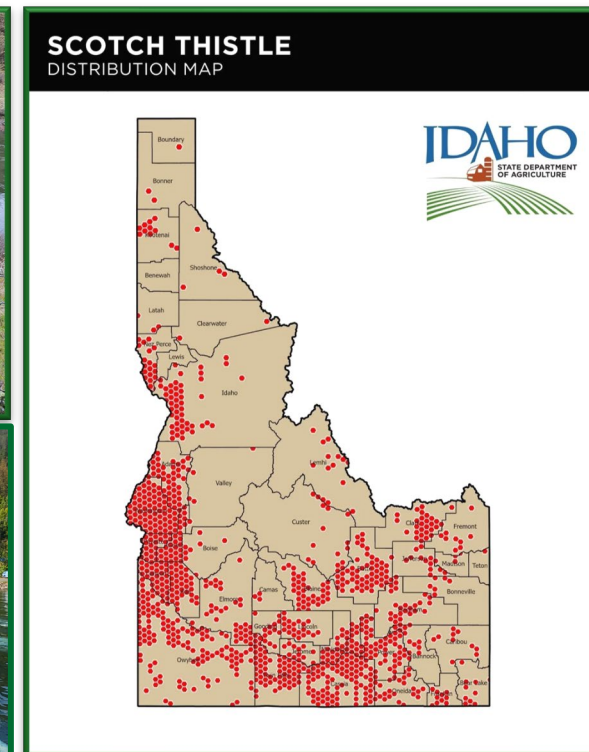
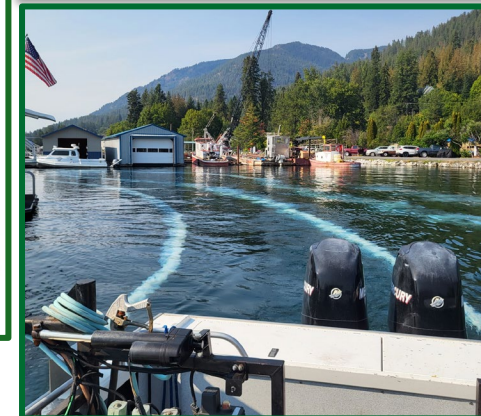
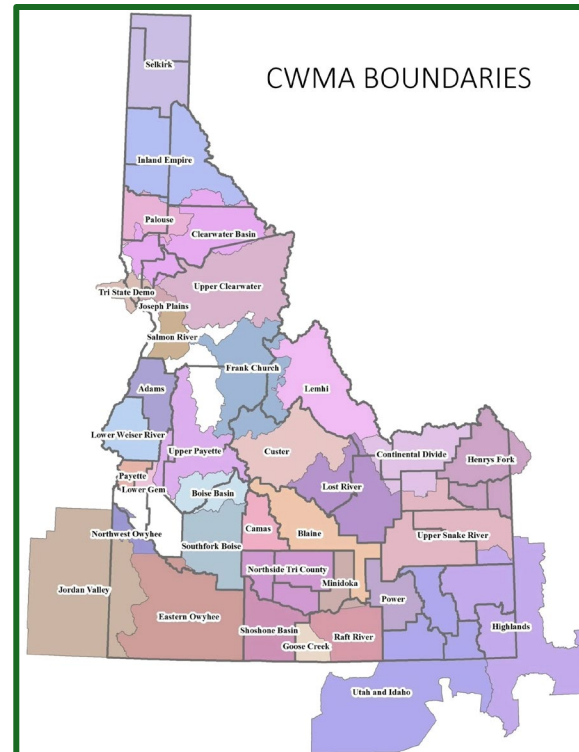
Title 22, Chapter 24 – Relates to Noxious Weeds

Examples:

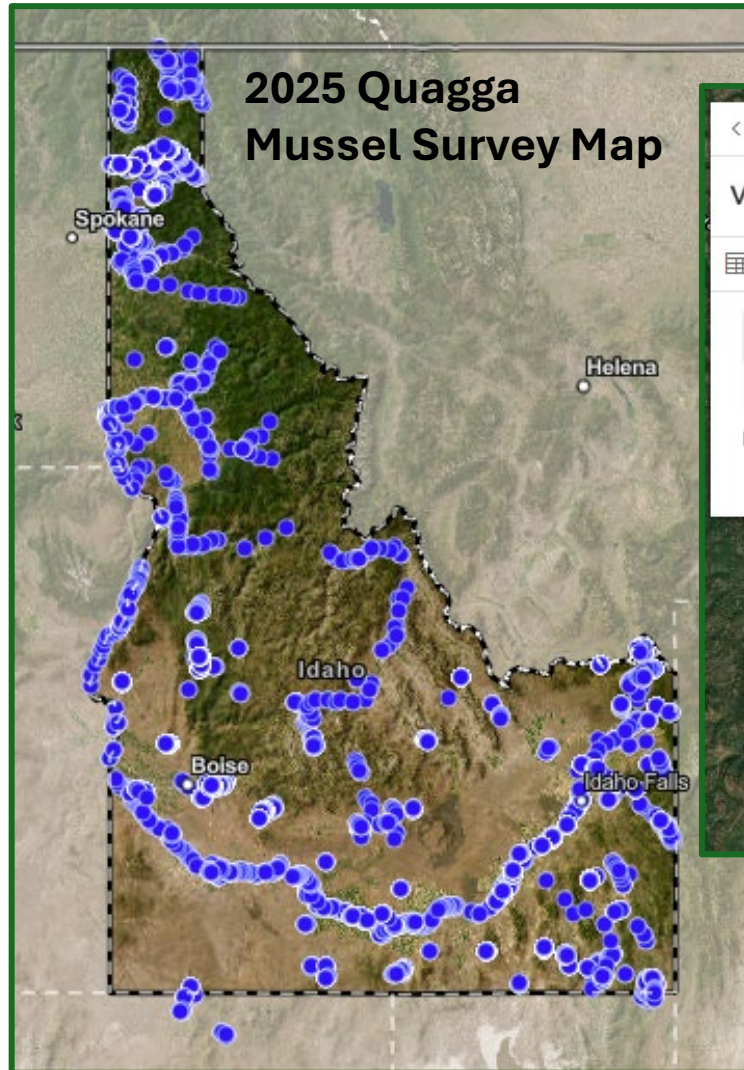
Cooperative Weed Management Areas (CWMA)

State noxious weed distribution Mapping

Control of aquatic noxious weeds in Idaho waterbodies



ISDA GIS Capabilities

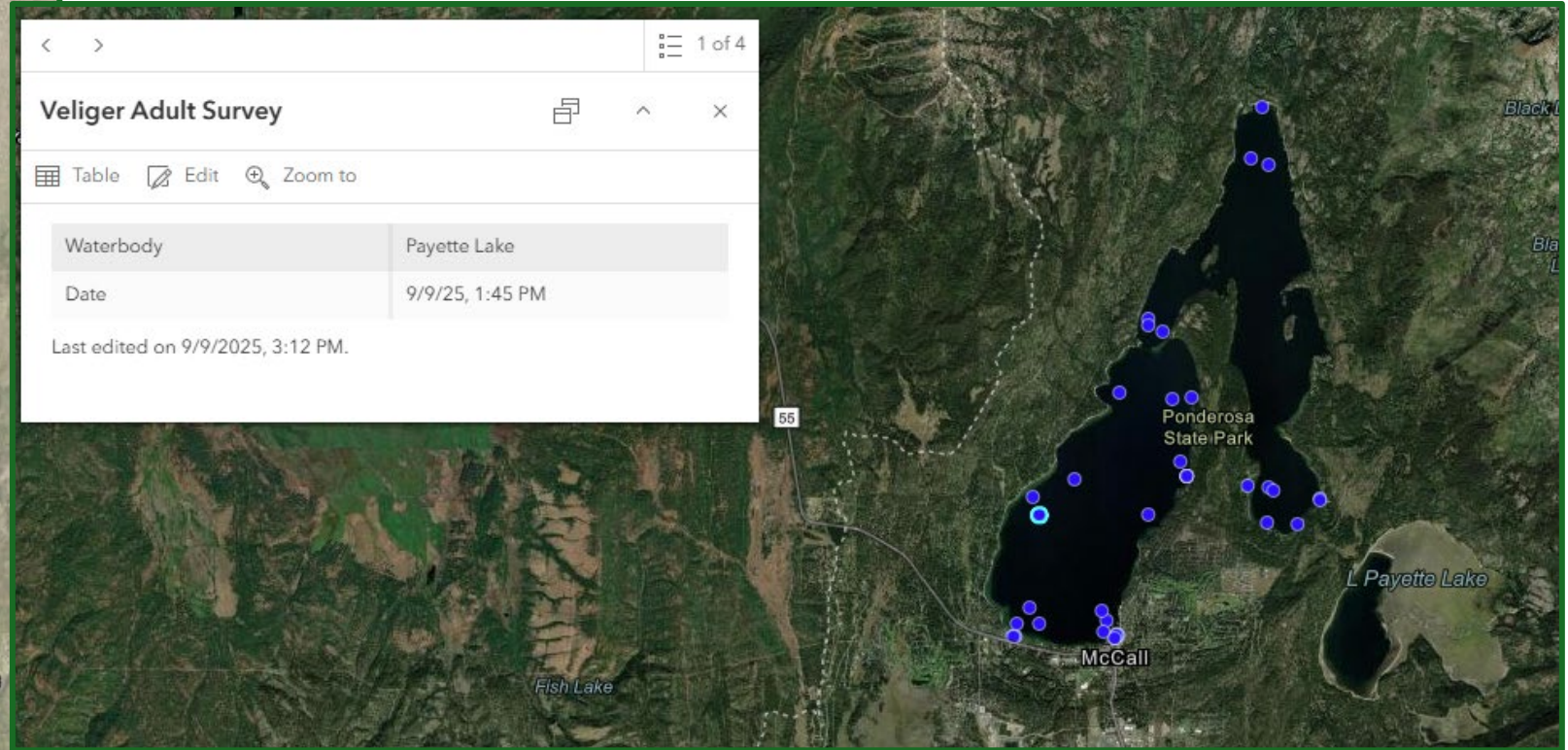


Veliger Adult Survey

Table Edit Zoom to

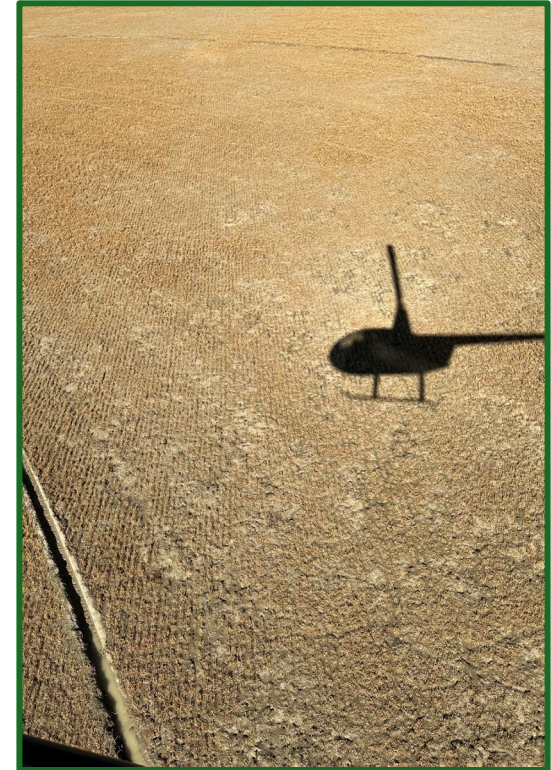
Waterbody	Payette Lake
Date	9/9/25, 1:45 PM

Last edited on 9/9/2025, 3:12 PM.



Example – Voles

- Rodents that can cause significant impacts to agricultural lands and crops.
- Significant impacts across southern Idaho in 2022 and beyond.
- Native species that is not on the Invasive Species list.
- No federal program to assist with vole infestations.
- No effective treatment products or technologies.
- No specific section of Idaho Code mandating control.



Abatement Districts

Title 39, Chapter 28 – Relates to Abatement Districts

- Authorizes the **formation of districts for the abatement** of "vermin" of public health and welfare importance, "In any area of the state from territory of one (1) or more counties, one (1) or more cities or towns, or any combination or portion thereof."
- "Vermin" is defined to include "small animals", which rats would so qualify.
- Authorizes the board of county commissioners, in collaboration with local and state officials, to declare such pests as a public health and welfare pests and to take necessary action to prevent the spread of disease, or adverse economic impact, caused by these pests.

Example:

Mosquito Abatement Districts



Animal Damage Control (ADC) Districts

Title 25, Chapter 26 – Relates to Animal Damage Control (ADC) Districts

- Established in 1951 to prevent and control damaged caused by predatory animals and other vertebrate pests (including rodent) to agriculture production
- Authorizes the **formation of districts for the control of agricultural pests (5 districts covering all 44 counties)**
- Levy of Taxes
- Notice to Landowner
- Cooperation with State and Federal Agencies

Examples:

Coyote Control

Feral Hog Control

Starling Control

Pest Management Funding

- Invasive Species – Quagga and Zebra Mussels
 - Watercraft inspection fees
 - Federal funding
 - General Fund & Deficiency Warrant authority
 - \$3.3 million treatment in FY26
- Plant Pests – Grasshoppers and Mormon Crickets
 - General Fund – Deficient Warrant authority
 - \$1,149,494 in FY24
- Plant Pests – Japanese Beetles
 - General Fund – Deficient Warrant authority
 - \$485,700 in FY24
- Noxious Weeds
 - Costs borne first by landowner, county and then the State
 - Idaho lands and water falls to the State
 - General Fund
- County Abatement
 - Falls to county budgets

Treatment Types Available for Rats

Treatment Type	Info	Effectiveness
Sanitation/Exclusion	Sealing entry points, removing food sources, eliminating water access, reducing clutter, weeds, debris to reduce shelter.	Preventative and Most Effective
Trapping	Snap traps, bait traps, glue traps. Placement is key with effective trapping.	Effective
Repellants	Sound or electronic devices.	Less Effective
Rodenticides	Poisons that kill rodents. Care should be taken to follow all labeled restrictions and proper and prudent use around children and pets. Does require baiting first. Usually, anticoagulants or non-anticoagulants.	Effective
Predation	Use of cats or dogs to pursue rats.	Less Effective
Shooting	Use of small caliber firearms in proper rural settings, can bring initial infestations down.	Effective

Considerations

- Funding
- Jurisdiction
- Opportunities for private industry
- Pets
- Raising awareness
- Public information submission (GIS maps)

February 3, 2026
Attachment 2