



Idaho Department of Agriculture

Base Review

Morgan Poloni, Budget &
Policy Analyst

February 12, 2026

LBB: 5-003

Organizational Structure

231.00 FTP

12.00 Vacant
as of 11/26/2025

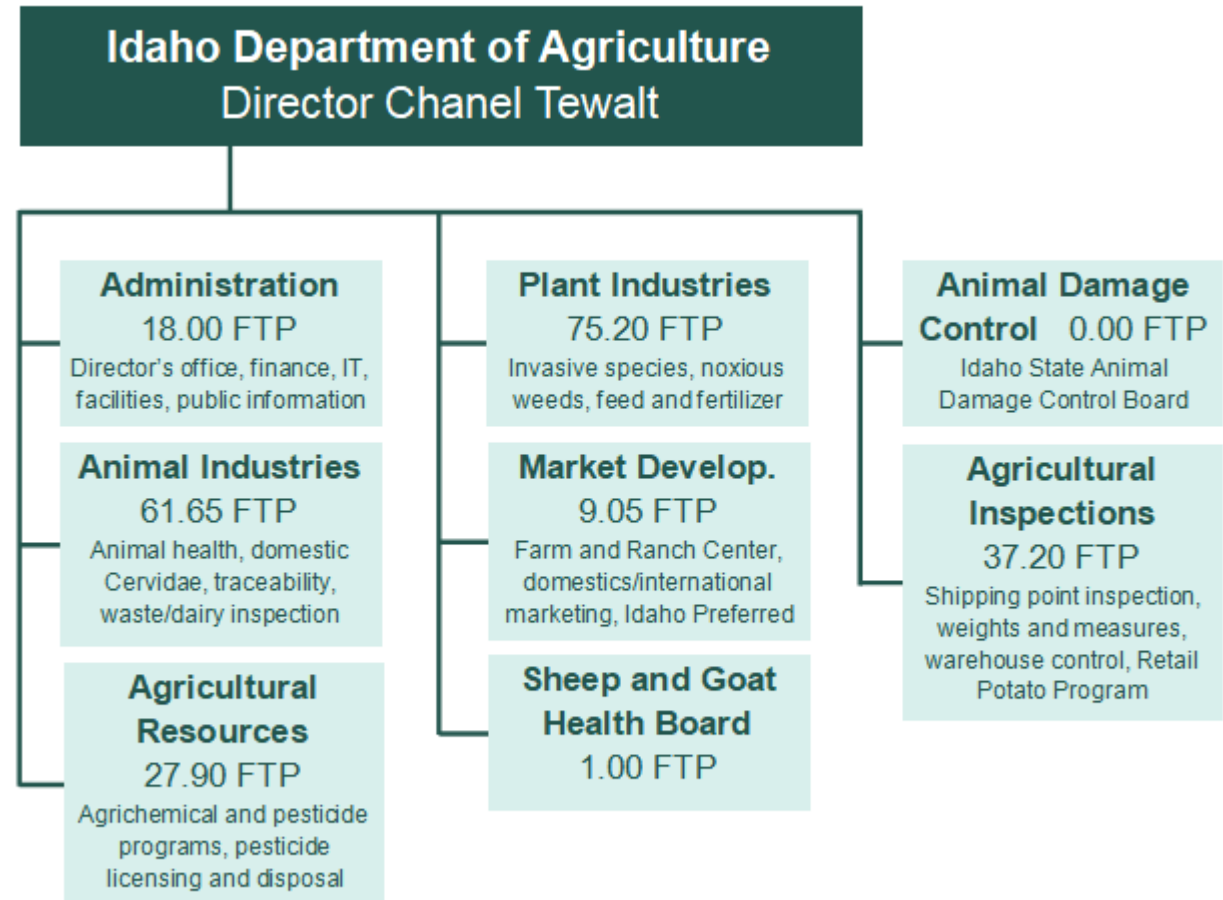
Five-year Averages

Authorized FTP: **220.90**

Filled FTP Percentage: **91.82%**

Personnel Cost Appropriated: **\$29,229,180**

Percent of PC Spent on PC: **82.66%**



Consolidated Fund Analysis

Description	FY 2024 Actual	FY 2025 Actual	FY 2026 Estimate	FY 2027 Estimate
A Beginning Free Fund Balance	\$22,574,900	\$20,345,000	\$19,644,800	\$16,401,000
B Receipts and Transfers	\$23,130,100	\$28,751,000	\$26,453,400	\$24,594,500
C Cash Expenditures*	\$25,360,000	\$29,451,200	\$29,697,200	\$28,890,100
Ending Free Fund Balance (A + B - C)	\$20,345,000	\$19,644,800	\$16,401,000	\$12,105,400

By Fund

A Admin and Accounting Services	\$1,580,000	\$1,636,800	\$1,679,800	\$1,024,800
B Facilities Maintenance	\$4,000	\$159,300	\$159,300	\$10,000
C Animal Damage Control	\$0	\$0	\$0	\$0
D Agricultural Inspection	\$1,134,100	\$1,279,100	\$1,250,200	\$990,700
E Weights and Measures	\$56,700	\$36,100	\$45,700	\$14,000
F Invasive Species	\$4,320,000	\$5,274,800	\$4,443,000	\$3,504,100
G Pest Control Deficiency	(\$1,724,300)	(\$1,299,800)	(\$1,200,000)	(\$1,100,000)
H Ag Fees - Sheep and Goat Health Board	\$514,000	\$186,400	\$163,200	\$140,000
I Ag Fees - Commercial Feed & Fertilizer	\$2,912,200	\$2,645,400	\$2,019,900	\$1,335,500
J Ag Fees - Pesticides	\$3,237,900	\$3,066,200	\$1,997,600	\$951,800
K Ag Fees - Livestock Disease Control	\$1,578,200	\$1,541,600	\$1,205,600	\$1,082,600
L Ag Fees - Dairy Inspection	\$659,100	\$646,100	\$381,500	\$202,500
M Ag Fees - Honey Advertising	\$27,200	\$13,700	\$3,800	\$0
N Ag Fees - Egg Inspection	\$392,000	\$517,500	\$527,100	\$445,700
O Ag Fees - Organic Food Products	\$425,800	\$307,300	\$167,700	\$1,600
P Ag Fees - Commercial Fisheries	\$3,600	\$3,400	\$3,500	\$1,400
Q Ag Fees - Poultry Inspection	\$9,700	\$14,100	\$15,600	\$12,100
R Ag Fees - Hemp	\$92,100	\$124,500	\$117,700	\$79,600
S Ag Fees - Fresh Fruit and Vegetable Inspection	\$733,400	(\$2,530,200)	(\$2,872,800)	(\$3,042,800)
T Depredation of Livestock and Prevention Fund	\$0	\$111,600	\$0	\$0
U Seminars and Publications	\$162,100	\$198,200	\$246,300	\$299,400
V Quality Assurance Laboratory Services	\$286,200	\$187,300	(\$153,500)	(\$523,400)
W Rural Rehab Loan Program	\$352,700	\$367,200	\$374,300	\$381,400
X Commodity Indemnity Fund	\$307,000	\$860,800	\$992,300	\$1,108,800
Y REDIFIT Program	\$2,922,500	\$3,118,100	\$3,287,700	\$3,283,900
Z Seed Indemnity Fund	\$358,800	\$1,179,300	\$1,545,500	\$1,901,700
Ending Free Fund Balance	\$20,345,000	\$19,644,800	\$16,401,000	\$12,105,400
<i>Direct Investments, Commodity Indemnity Fund</i>	<i>\$11,412,000</i>	<i>\$11,412,000</i>	<i>\$11,412,000</i>	<i>\$11,412,000</i>
<i>Direct Investments, Seed Indemnity Fund</i>	<i>\$12,457,700</i>	<i>\$12,099,000</i>	<i>\$12,099,000</i>	<i>\$12,099,000</i>
<i>Direct Investments, REDIFIT Program</i>	<i>\$1,243,500</i>	<i>\$1,243,500</i>	<i>\$1,243,500</i>	<i>\$1,243,500</i>
<i>Direct Investments, Ag Fees - Fresh Fruit</i>	<i>\$3,905,200</i>	<i>\$3,905,200</i>	<i>\$3,905,200</i>	<i>\$3,905,200</i>
Ending Free Fund Balance, Incl Direct Investments	\$49,363,400	\$48,304,500	\$45,060,700	\$40,765,100

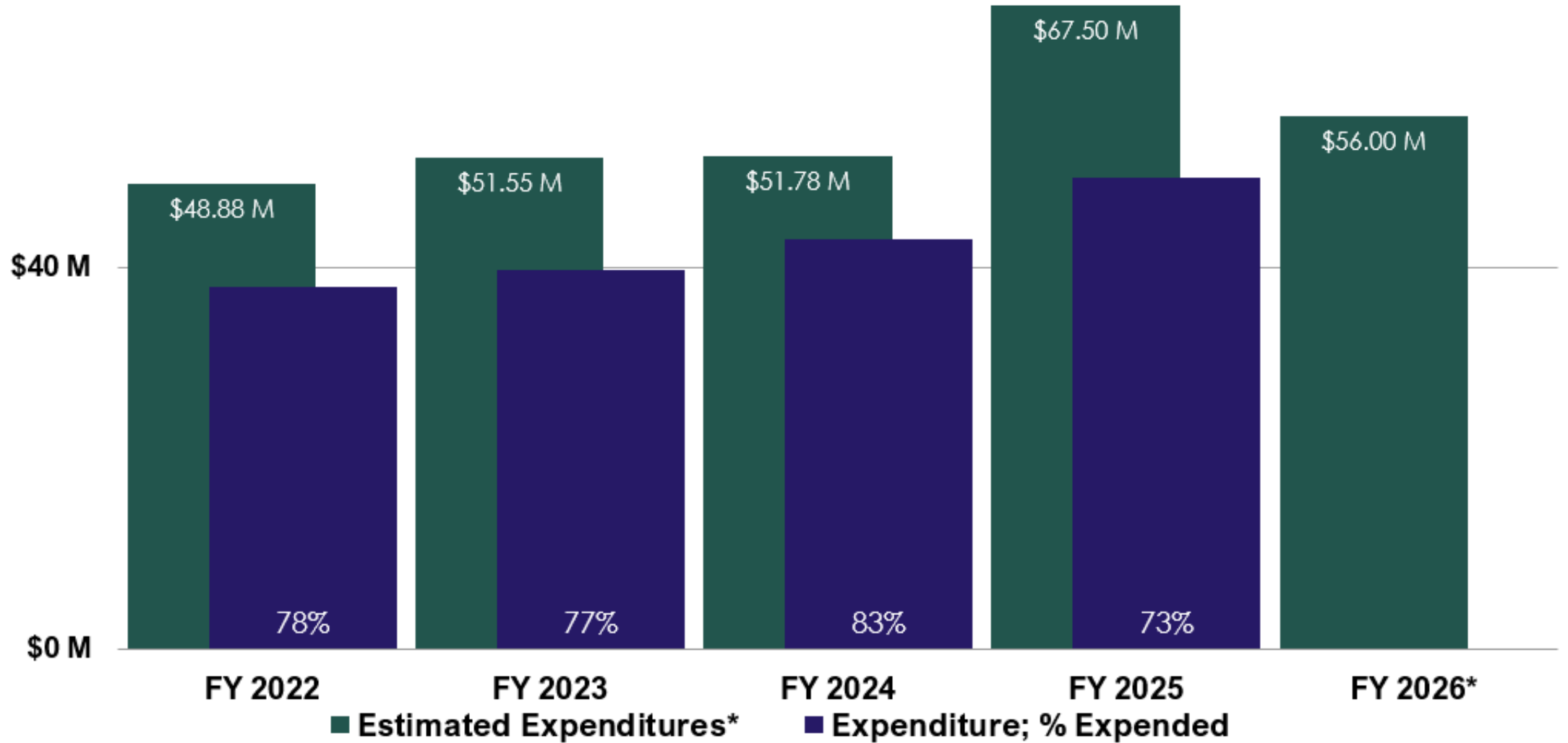
** Estimate based on request.

LSO

Legislative Services Office



Five-Year Review



*FY 2026 is Original Appropriation

2025 Budget Enhancements

Ongoing Enhancement	Type	Amount
Veterinary Medical Officer (1.00 FTP)	Enhancement	\$180,300
Dairy Inspectors (2.00 FTP)	Enhancement	\$206,600
Seed Lab Personnel (1.0 FTP)	Enhancement	\$75,800
Idaho Preferred Operating Enhancement	Enhancement	\$67,500
International Trade Support with Japan	Enhancement	\$60,000
CEC for Fruits & Veg. Inspectors	Enhancement	\$94,500
Honey Commission Increase	Enhancement	\$5,700
Quagga Mussel Resources	Enhancement	\$1,569,900
Livestock Depredation, H592	Enhancement	\$225,000
2% Additional CEC	Enhancement	\$348,300
Total		\$2,833,600

2025 Budget Enhancements

Onetime Enhancement	Type	Amount
Veterinary Medical Officer	Enhancement	\$34,700
Dairy Inspectors	Enhancement	\$78,000
Seed Lab Personnel	Enhancement	\$13,000
Storage Building Construction	Enhancement	\$1,500,000
Resilient Food Systems Grant	Enhancement	\$6,184,900
Quagga Mussel Resources	Enhancement	\$5,000,000
Replacement Items	Enhancement	\$1,381,700
Exotic Species Deficiency Warrants	Supplemental	\$1,724,300
Total		\$14,192,300

2026 Budget Enhancements

Ongoing Enhancement	Type	Amount
Ag. Investigator Pay Structure	Enhancement	\$340,400
Fruit & Veg Inspector CEC	Enhancement	\$390,800
Total		\$731,200

Onetime Enhancement	Type	Amount
Replacement Items	Enhancement	\$891,000
OITS Hardware	Enhancement	\$214,700
Total		\$1,105,700

2026 Budget Enhancements – Outcomes

1. Ag investigator Pay Structure	AGENCY SUBMITTED OUTCOMES: This request will have a positive impact on all departmental goals through staff retention and development. If this request is funded, the measured outcome the department anticipates is reduced turnover, which is expected to result in improved productivity and better service to the industry.
2. Fruit and Vegetable Inspector CEC	AGENCY SUBMITTED OUTCOMES: This request will allow the department to retain full time staff and provide increases consistent with all state full time employees. The department anticipates a measured outcome of timely, high quality inspections if the request is funded.

2027 Budget Request & Gov Recommendation

Ongoing Enhancement	Type	Amount	Gov Rec
CEC for Fruits & Veg. Inspectors	Enhancement	\$425,900	Not recommended
Total		\$425,900	

Onetime Enhancement	Type	Amount	Gov Rec
Replacement Items	Enhancement	\$621,100	Recommended
OITS Hardware	Enhancement	\$208,800	Recommended
Total		\$829,900	

Budget Law Exemptions	Type	Amount	Gov Rec
Reappropriation	Enhancement	--	Recommended
Total		--	

FY 2026 Deficiency
Warrant for Exotic Species
Response: \$1,298,600

FY 2026 Supplemental
for Quagga Mussel
Treatment: \$3,393,000

2027 Budget Enhancements – Outcomes

1. Fruit and Veg Inspector
CEC

AGENCY SUBMITTED OUTCOMES: This request will allow the department to retain full-time staff and provide an increase consistent with all state full-time employees. The department anticipates a measured outcome of timely, high-quality inspections if the request is funded

Historical Summary

Department of Agriculture

Analyst: Poloni

Historical Summary

OPERATING BUDGET	FY 2025 Total App	FY 2025 Actual	FY 2026 Approp	FY 2027 Request	FY 2027 Gov Rec
BY PROGRAM					
Administration	3,180,900	2,823,500	3,247,900	3,388,700	3,342,500
Animal Industries	8,285,700	6,709,200	8,712,300	8,772,700	8,627,400
Agricultural Resources	4,431,500	3,375,900	4,617,400	4,345,000	4,278,000
Plant Industries	25,494,400	19,161,300	19,306,000	19,575,300	19,400,500
Agricultural Inspections	14,282,800	11,855,000	14,741,900	15,268,000	14,753,000
Market Development	10,867,600	5,078,800	4,743,500	4,774,200	4,752,400
Animal Damage Control	428,100	389,700	428,100	425,000	425,000
Sheep and Goat Health Board	201,400	146,800	206,500	207,100	204,800
Total:	67,172,400	49,540,200	56,003,600	56,756,000	55,783,600
BY FUND CATEGORY					
General	15,011,800	15,067,300	15,611,500	15,525,100	15,351,100
Dedicated	38,453,800	27,287,500	32,741,400	33,519,900	32,753,900
Federal	13,706,800	7,185,400	7,650,700	7,711,000	7,678,600
Total:	67,172,400	49,540,200	56,003,600	56,756,000	55,783,600
Percent Change:	0.0%	(26.2%)	13.0%	1.3%	(0.4%)
BY OBJECT OF EXPENDITURE					
Personnel Costs	32,590,000	27,691,300	34,504,300	35,569,400	34,597,000
Operating Expenditures	14,746,300	10,849,600	13,655,700	13,676,400	13,676,400
Capital Outlay	7,634,200	4,644,200	1,246,700	966,400	966,400
Trustee/Benefit	12,201,900	6,355,100	6,596,900	6,543,800	6,543,800
Total:	67,172,400	49,540,200	56,003,600	56,756,000	55,783,600
Full-Time Positions (FTP)	231.00	231.00	231.00	230.00	230.00



Please feel free to contact me with
any questions at 208.334.1288 or
[mpoloni @lso.idaho.gov](mailto:mpoloni@lso.idaho.gov)

Performance Measures

Performance Measure		FY 2021	FY 2022	FY 2023	FY 2024	FY 2025
GOAL 1: Fulfill core statutory responsibilities by protecting the public, plants, animals, and environment using regulation and education.						
1. Conduct inspections, investigations, surveillance, and testing to prevent the introduction/spread of animal disease.	actual	487,869	540,438	544,446	452,070	
	target	200,000* annual inspections investigations and tests	200,000* annual inspections investigations and tests	400,000* annual inspections investigations and tests	400,000* annual inspections investigations and tests	400,000* annual inspections investigations and tests
GOAL 2: Foster confidence in Idaho's agriculture industry and market transactions by maintaining a strong commitment to those programs intended to safeguard consumer confidence.						
5. Provide fresh fruit and vegetable inspection services for all applicant requests assuring product meets marketing order and grade on label while maintaining less than 1% reversal rate.	actual	609 Applicants; 27,096 certificates issued; 4 reversals	480 Applicants; 24,241 certificates issued; 9 reversals	365 Applicants; 20,293 certificates issued; 6 reversals, less than 1%	404 Applicants; 28,484 certificates issued; 7 reversals, less than 1%	
	target	Applicants 515 Certificates 28,000 1% reversal rate	Applicants 515 Certificates 28,000 1% reversal rate	Applicants 515 Certificates 28,000 1% reversal rate	Applicants 515 Certificates 28,000 1% reversal rate	Applicants 515 Certificates 28,000 1% reversal rate
GOAL 3: Support the growth and sustainability of Idaho's agriculture industry by increasing domestic and international sales opportunities of Idaho foods and agricultural products to foster industry growth and profitability.						
10. Obtain a minimum average overall customer satisfaction rating of 4 for promotions, missions, workshops and events using a scale of 1-5, 5 being the highest.	actual	4.8	4.7	4.6	4.3	
	target	Minimum average customer satisfaction rating of 4	Minimum average customer satisfaction rating of 4	Minimum average customer satisfaction rating of 4	Minimum average customer satisfaction rating of 4	Minimum average customer satisfaction rating of 4

Idaho Department of Agriculture

The mission of the Idaho State Department of Agriculture is to guarantee that Idaho agricultural products are of high quality, disease-free, and meet federal and state laws, rules, and regulations. The department protects consumers and producers from fraud and provides marketing assistance to the industry. There are eight budgeted programs:

1. The Administration Program coordinates the accounting, payroll, legal, and personnel functions;
2. Animal Industries is responsible for veterinary services, range management, dairy laboratory and dairy inspection, animal laboratory, livestock inspection, egg inspection, and animal waste management (Title 25, IC);
3. Agricultural Resources protects the public health, environment, livestock, and wildlife of the state from possible adverse effects resulting from the improper use of pesticides (Title 22, IC);
4. Plant Industries includes the plant, fertilizer, and seed laboratories and programs, noxious weeds, the Honey Commission, and the Invasive Species Program (Titles 22 and 25, IC);
5. Agricultural Inspections includes the Bureau of Shipping Point Inspections, Bureau of Warehouse Control, Retail Potato Program, Hops Program, Organic Foods Program, and Bureau of Weights and Measures (Titles 37, 69, and 71, IC);
6. The Marketing and Development Program assists Idaho food producers to increase their profitability by enhancing the marketing opportunities for their products (Chapter 29, Title 49, IC, and Chapter 14, Title 57, IC);
7. The United States Department of Agriculture's Animal and Plant Health Inspection Service, Wildlife Services Program operates in Idaho under a memorandum of understanding with the Idaho State Animal Damage Control Board (Titles 22, and 25, IC);
8. The Sheep and Goat Health Board provides a comprehensive program involving disease and predator control and enables the sheep and goat industries to maintain high production standards and economic returns (Title 25, IC).



Five-Year Base Snapshot

Fiscal Year	FY 2022	FY 2023	FY 2024	FY 2025	FY 2026*
1. Total FTP	217.50	225.00	225.00	231.00	231.00
2. Current Year Base	44,711,500	45,370,800	48,717,600	50,073,300	52,980,100
3. Benefits Costs	54,900	173,700	224,800	(131,700)	256,600
4. Inflationary Adjustments			1,100		
5. Statewide Cost Allocation	58,000	3,700	156,500	38,100	(46,400)
6. CEC	330,700	1,119,100	682,200	166,800	976,400
7. Total Ongoing Maintenance Change	443,600	1,296,500	1,064,600	73,200	1,186,600
8. <i>% Chg from Current Year Base (line 7 / 2)</i>	<i>1.0%</i>	<i>2.9%</i>	<i>2.2%</i>	<i>0.1%</i>	<i>2.2%</i>
9. Ongoing Enhancements	215,700	2,050,300	291,100	2,833,600	731,200
10. Total Ongoing Enhancements Change	215,700	2,050,300	291,100	2,833,600	731,200
11. <i>% Chg from Current Year Base (line 10 / 2)</i>	<i>0.5%</i>	<i>4.5%</i>	<i>0.6%</i>	<i>5.7%</i>	<i>1.4%</i>
12. Next Year Base (line 2 + 7 + 10)	45,370,800	48,717,600	50,073,300	52,980,100	54,897,900*
13. Total Base Change (line 12 - 2)	659,300	3,346,800	1,355,700	2,906,800	1,917,800
14. <i>% Chg from Current Year Base (line 13 / 2)</i>	<i>1.5%</i>	<i>7.4%</i>	<i>2.8%</i>	<i>5.8%</i>	<i>3.6%</i>

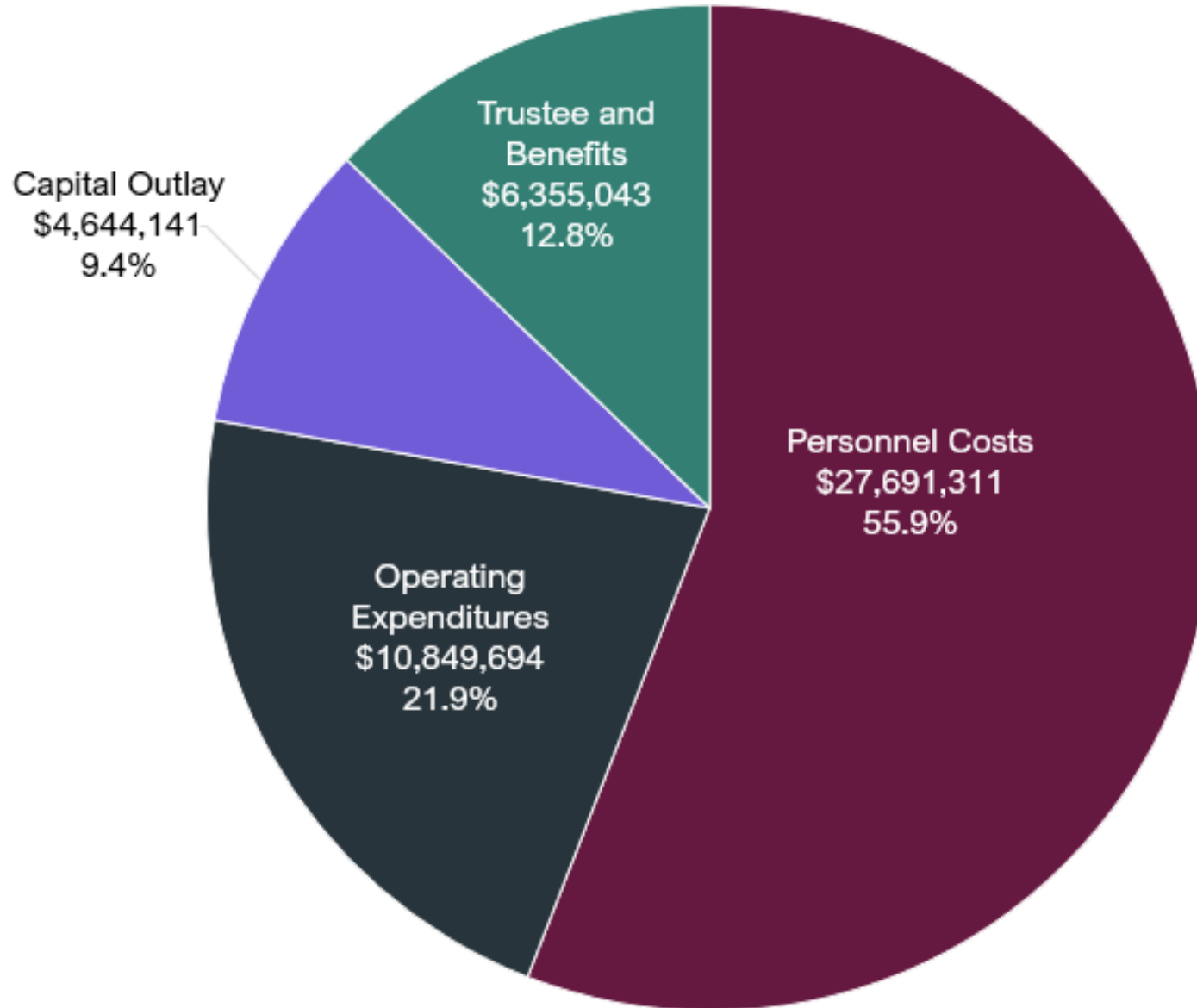
*Next Year Base not set. Ongoing Original Appropriation used instead.

LSO

Legislative Services Office



FY 2025 Expenditures



FY 2025 Expenditures – Personnel Costs

55.9% of Total Appropriated Expenditures



Gross Salary and Wages: \$19,133,393

Employees	\$17,449,724
Temporary Employees	\$1,683,669

Employee Benefits: \$8,557,918

Other Employee Benefits	\$4,470,580
Employer Retirement Contribution	\$2,134,872
Social Security and Medicare	\$1,403,721
DHR	\$304,182
Workers Compensation	\$244,563

A grand total of \$28,168,693 was expended on personnel costs. This includes \$27,691,311 in appropriated funds shown above and \$477,382 from continuously appropriated funds.

FY 2025 Expenditures – Operating Expenditures

21.9% of Total Expenditures

Operating Expenditures

Expenditure	FY 2021	FY 2022	FY 2023	FY 2024	FY 2025	% of Total
Professional Services	\$3,011,911	\$2,914,629	\$3,555,390	\$3,267,495	\$4,343,695	40.0%
Repair & Maintenance Services	\$400,534	\$594,876	\$505,679	\$1,146,310	\$1,092,745	10.1%
Specific Use Supplies	\$639,221	\$629,493	\$712,773	\$541,215	\$822,054	7.6%
Miscellaneous Expenditures	\$837,870	\$950,726	\$1,524,816	\$795,241	\$782,103	7.2%
General Services	\$556,818	\$527,431	\$397,612	\$486,875	\$730,156	6.7%
Employee Travel Costs	\$148,800	\$275,473	\$487,428	\$591,286	\$538,755	5.0%
Computer Services	\$829,984	\$789,702	\$943,391	\$589,163	\$484,808	4.5%
Fuel & Lubricant Costs	\$249,378	\$402,900	\$461,026	\$448,454	\$461,683	4.3%
Communication Costs	\$276,371	\$267,286	\$283,133	\$285,093	\$362,585	3.3%
Rentals & Operating Leases	\$249,624	\$247,961	\$302,947	\$168,704	\$246,717	2.3%
Insurance	\$135,015	\$148,933	\$119,687	\$84,809	\$213,874	2.0%
Computer Supplies	\$44,926	\$78,168	\$90,604	\$92,256	\$213,053	2.0%
Utility Charges	\$259,151	\$303,102	\$352,707	\$201,076	\$158,281	1.5%
Employee Development Costs	\$51,058	\$67,885	\$81,998	\$79,661	\$149,924	1.4%
Administrative Supplies	\$98,217	\$107,902	\$111,281	\$92,983	\$102,535	0.9%
Administrative Services	\$60,356	\$37,029	\$92,292	\$77,410	\$80,151	0.7%
Repair & Maintenance Supplies	\$60,546	\$68,059	\$80,799	\$102,343	\$65,748	0.6%
Manufacturing & Merchandising Costs				\$208	\$713	0.0%
Institutional & Residential Supplies			\$1,155	\$97	\$115	0.0%
Total	\$7,909,780	\$8,411,555	\$10,104,717	\$9,050,679	\$10,849,694	-



FY 2025 Expenditures – Trustee & Benefit Payments

12.8% of Total Expenditures

Expenditure	FY 2021	FY 2022	FY 2023	FY 2024	FY 2025	% of Total
Misc Payments As Agent	\$ 4,028,981	\$3,180,830	\$2,515,730	\$3,589,128	\$3,073,089	47.50%
Fed Payments To Subgrantes	\$ 906,847	\$2,892,622	\$1,793,483	\$2,763,448	\$3,397,054	52.50%
Non Fed Payments To Subgrantees	\$50,000	--	--	\$52,575	--	--
Total	\$ 4,985,828	\$6,073,452	\$4,309,213	\$6,405,151	\$6,470,143	-

The Department of Agriculture is the recipient of 54 distinct federal grants and expended \$3,397,054 from federal funds for trustee and benefit payments in FY 2025. Federal agencies from which the Idaho Department of Agriculture received grants included the:

- U.S. Department of Agriculture (Agricultural Marketing Service, Animal and Plant Health Inspection Service, Cooperative State Research, Education, and Extension Service, Forest Service, National Institute of Food and Agriculture, Natural Resources Conservation Service);
- U.S. Department of the Interior (BLM, Fish & Wildlife Services);
- U.S. Department of the Treasury;
- U.S. Environmental Protection Agency;
- U.S. Department of Health and Human Services (Food and Drug Administration); and
- U.S. Army Corps of Engineers.

The details of these grants can be reviewed as part of the Federal Fund Inventory for the Idaho Department of Agriculture.



2021 Budget Enhancements

Ongoing Enhancement	Type	Amount
Farm Forward Program	Enhancement	\$0
Multi-Agency Decisions	Enhancement	\$200,200
Weights & Measures Inspector	Enhancement	\$54,300
Fresh Fruit & Veg Inspectors	Enhancement	\$31,800
Pest Control Specialist	Enhancement	\$0
2% General Fund Reduction & Exemptions	Enhancement	(\$239,700)
CSI Office Space Move	Enhancement	\$50,000
Industrial Hemp (H126)	Supplemental	\$150,000
Total Ongoing Base Change from Enhancements		\$246,600

2022 Budget Enhancements

Ongoing Enhancement	Type	Amount
Office 365 Subscription	Enhancement	\$97,300
Fresh Fruit & Veg Inspectors	Enhancement	\$63,300
Animal Lab Technician	Enhancement	\$55,100
Total Ongoing Base Change from Enhancements		\$215,700

2024 Budget Enhancements

Ongoing Enhancement	Type	Amount
DHR Consolidation	Enhancement	(\$203,700)
Weights and Measures Program Operations	Enhancement	\$80,000
1% CEC for Fruits & Veg. Inspectors	Enhancement	\$264,800
Animal Lab Supplies and Software	Enhancement	\$150,000
Total Ongoing Base Change from Enhancements		\$291,100

Agency Funds – Sources and Uses

General Fund

Animal Damage Control Fund

Sources: The State Controller shall annually, by August 1 of each year, transfer the sum of \$100,000 from the Fish and Game Fund to the Animal Damage Control Fund (Section 36-112, Idaho Code). The distribution of excess moneys from the Expendable Big Game Depredation Fund pursuant to Section 36-115(c), Idaho Code, was eliminated by H230 of 2017.

Uses: Moneys in the fund are subject to appropriation to the State Animal Damage Control Board established by Section 25-2612A, Idaho Code, for the control of predatory animals and birds. The State Animal Damage Control Board in using these moneys shall follow Fish and Game Commission direction on actions regarding predatory animals or birds forwarded by the department by August 1 of each year. The Fish and Game Commission has traditionally made about half of the revenues available to the animal control districts for the control of predatory animals and birds and about half to the animal control districts to be used in conjunction with research projects to best accomplish the protection of upland game and big game animals from depredation.

Agency Funds – Sources and Uses

Administration and Accounting Services Fund

Sources: Rent receipts, indirect costs receipts from Federal Grants, sale of Idaho Statistical Bulletins, and assessments of administrative charges for the department on the various special revenue funds administered by the agency.

Uses: Administrative expenses of the Department of Agriculture, including salary or wages, travel, supplies, equipment, communication and all other expenses necessary in carrying out the functions and duties of the department. The Department of Agriculture also provides administrative services to the Wolf Depredation Control Board.

Facilities Maintenance Fund

Sources: Idaho Department of Agriculture allocations between bureaus, and receipts from the Department of Health & Welfare for facilities charges. These entities pre-pay anticipated expenses to operate the facilities at the Health/Ag Complex on Old Penitentiary Road, part of which is rented to the Department of Health and Welfare.

Uses: This fund is used to pay utilities, janitorial services, and repair and maintenance bills of the Health/Ag Complex.

Agency Funds – Sources and Uses

Agricultural Inspection Fund

Sources: All moneys received by the Department of Agriculture for any inspection, which the department by law may be authorized or required to make, except those moneys specifically received for and credited to another fund or funds, shall be credited to the Agriculture Department Inspection Fund (Section 22-104, Idaho Code). Includes beekeeper assessment (Section 22-2510, Idaho Code) and livestock market operators (Section 25-1728, Idaho Code).

Uses: This fund is used for administrative expenses of the department, salaries or wages of the director and of subordinates and employees, expenses of travel, communication, supplies, equipment, fixed charges, inspection, and all other necessary expenses of the Department of Agriculture in carrying out its functions and the duties enjoined on it by law (Section 22-105, 22-2510, and 25-1720 Idaho Code).

Weights and Measures Inspection Fund

Sources: The department is authorized to charge fees for the licensing of weighing and measuring device to compensate the state for the expense of administering weights and measures laws. The fees are set by rule and deposited with the State Treasurer to the Weights and Measures Fund, which is established in Section 71-121, Idaho Code.

Uses: The fees shall be collected to allow the Department of Agriculture to enforce the weights and measures laws, test weights and measures used in public institutions, inspect and test commercially-used weights and measures, enforce orders, verify weights and measures of contents of packages, and provide other services (Sections 71-111 to 71-116, Idaho Code).



Agency Funds – Sources and Uses

Invasive Species Fund

Sources: The Invasive Species Fund receives appropriations as deemed necessary by the Governor and the Legislature to accomplish the goals of Chapter 19, Title 22, Idaho Code. The main source of funding is from a boat sticker fee charged to launch in Idaho waters (Section 67-7008A, Idaho Code). The fund may also receive, at the discretion of the director, moneys from any other lawful source including, without limitation, interest, insurance settlements, fees for technical services, penalties, fines, gifts, grants, legacies of money, property, securities or other assets, or any other source, public or private. All interest or other income accruing from moneys deposited to the fund shall accrue to the fund. Any unexpended balance left in the fund at the end of any fiscal year shall carry forward without reduction to the following fiscal year (Section 22-1911, Idaho Code).

Uses: The fund is used to support activities related to the prevention, detection, control, and management of invasive species in Idaho (Section 22-1911, Idaho Code).

Agency Fund – Source and Use

Depredation of Livestock and Prevention Fund

Sources: Pursuant to H592 of 2024, the Depredation of Livestock and Prevention Fund is funded by the General Fund.

Uses: The Depredation of Livestock and Prevention Fund provides compensation to livestock owners and producers who have experienced livestock loss from depredation by grizzly bears and wolves. The Department of Agriculture, in consultation with the Department of Fish and Game and Office of Species Conservation, manages the fund and issues compensation for claims validated by the Office of Species Conservation. The annual appropriation is \$225,000, which includes \$150,000 for livestock depredation and \$75,000 for conflict prevention.

Agency Funds – Sources and Uses

Pest Control Deficiency Fund

Sources: This fund receives General Fund appropriations approved to reimburse the actual costs recorded as deficiency warrants that are approved by the State Board of Examiners (Section 22-2019, Idaho Code).

Uses: Whenever the cost of suppression and eradication of grasshoppers, crickets, or other pests on state-owned land or on private rangeland or agricultural land exceeds the funds appropriated or otherwise available for that purpose, the State Board of Examiners may authorize the issuance of deficiency warrants against the General Fund for up to \$5,000,000 in any one year for such suppression and eradication. The state becomes liable for those amounts and shall be paid out of appropriations which shall be made by the Legislature for that purpose.

Agency Funds – Sources and Uses

Agricultural Fees Fund(s) – Sheep and Goat Health

Sources: An annual assessment, not to exceed \$0.12 per pound on all wool, in the grease basis, sold through commercial channels, is levied on all wool produced within Idaho. \$0.02 of the assessment is considered a wolf control assessment pursuant to section 22-5306, Idaho Code. The current assessment is \$0.09 per pound (not found in IDAPA 02.08.01) and is distributed \$0.04 for animal health, \$0.03 for animal damage control, and \$0.02 for wolf control.

Uses: The objectives of the Sheep and Goat Health Board are to perform all those duties and powers necessary for the supervision of sheep and goats including: handling, shipping, transporting or moving, regulation, eradication of all diseases, the making of all rules and regulations, and all other matters regarding sheep and goats either in the state of Idaho or which may be brought into or shipped from the state of Idaho (Section 25-128, Idaho Code). A portion of the assessment is dedicated to the Animal Damage Control (ADC) program.

Agency Funds – Sources and Uses

Agricultural Fees Fund(s) – Commercial Feed and Fertilizer

Sources: Each type of commercial feed except customer-formula feed shall be registered and accompanied by a non-refundable fee established by the director not to exceed \$100 (Section 25-2704, Idaho Code). Separately identifiable commercial fertilizer must also be registered with the Department of Agriculture and are subject to fees (Section 22-605, Idaho Code). Also, distributors shall register each of their in-state storage facilities with the department and pay fees (Section 22-608, Idaho Code). Finally, each soil amendment and plant amendment offered for sale or sold in Idaho is registered annually by a fee (Section 22-2205, Idaho Code).

Uses: The inspection fee is used to pay the costs of inspection, sampling, and other administrative expenses (Section 25-2717, Idaho Code). Moneys received from the registration of brands are used to purchase samples of feeds and fertilizers for testing and analysis, for making or procuring analyses to be made, and for printing of forms, licenses, and other records (Section 22-620, Idaho Code).

Agency Funds – Sources and Uses

Agricultural Fees Fund(s) – Pesticides

Sources: Every pesticide which is distributed, sold, or offered for sale within Idaho is registered annually with the Department of Agriculture (Section 22-3402, Idaho Code). Private and professional pesticide applicators and dealers must obtain a license issued by the Department of Agriculture (Section 22-3404, Idaho Code).

Uses: The income in this fund is used for administering the Pesticide Law. For the purpose of carrying out the provisions of this act, the director may enter on any public or private premises at reasonable times in order to have access for the purpose of observing the use and application of pesticides, inspecting records that are required to be maintained by this act, chemigation equipment and standards, chemical use for chemigation, spraying equipment, storage facilities, disposal areas, investigating complaints of injury, inspection and sampling of land and sampling pesticides being distributed, offered for sale, applied or to be applied. The department shall conduct, or make provision to conduct, at least 250 annual chemigation system inspections to assure the effectiveness of the chemigation program in keeping chemicals out of surface and ground water (Section 22-3414 and 22-3415, Idaho Code).



Agency Funds – Sources and Uses

Agricultural Fees Fund(s) – Livestock Disease Control

Sources: The Division of Animal Industries can recover expenses incurred for disease control as provided by law (Sections 25-201, 25-207, 25-219, and 25-616, Idaho Code); artificial insemination license a fee of \$25 and \$5 for a renewal. All receipts are placed in the Livestock Disease Control Fund (Section 25-807, Idaho Code); a fee of \$0.22 per head is collected by the State Brand Inspector upon cattle, horses, and mules brand inspected in Idaho and the fee is deposited in the State Treasury in the Livestock Disease Control and T.B. Indemnity Fund (Section 25-232, Idaho Code); assessment of up to \$0.30 per head may be levied on porcine animals (pigs) sold in the state (Section 25-3404, Idaho Code); and license fee of \$10 per head per year is assessed on domestic cervidae producers (Section 25-3708, Idaho Code).

Uses: The moneys in this fund are used to pay for livestock disease control programs and deputy veterinarians and inspectors' salaries, travel expenses, cooperating with the U.S. Bureau of Animal Industry in maintaining laboratories, laboratory equipment expense, for the payment of indemnities for tubercular cattle slaughtered, and for other disease control activities (Section 25-233, Idaho Code). Funds collected from the porcine assessment are used for the conduction of swine disease control programs (Section 25-3406, Idaho Code), while funds collected from cervidae license and assessment are used to conduct the cervidae program and for cervidae disease control (Section 25-3708, Idaho Code).

Agency Funds – Sources and Uses

Agricultural Fees Fund(s) – Dairy Inspection

Sources: The Department of Agriculture is authorized to collect a fee from the dairy processors to cover the cost of the inspection (Section 37-407, Idaho Code); licenses for businesses receiving or purchasing milk or cream in bulk (Section 37-503, Idaho Code); license are food products resembling dairy products (Section 37-318, Idaho Code); bulk hauler's permit (Section 37-412, Idaho Code); tester/grader's license (Section 37-511, Idaho Code).

Uses: The money in this fund is used exclusively for inspection services (Section 37-407, Idaho Code).

Agricultural Fees Fund(s) – Honey Advertising

Sources: An annual tax, \$0.05 per hive or colony of bees, is levied upon each colony or hive of bees. The tax can be increased to not more than \$0.10 per hive and decreased to not less than \$0.03 per hive by the beekeepers voting in a referendum. The tax is collected by the Department of Agriculture (Section 22-2808, Idaho Code).

Uses: The purpose of the Idaho Honey Advertising Commission is to advertise and promote the honey industry in Idaho, and this fund supports honey related expenditures (Section 22-2802, Idaho Code).



Agency Funds – Sources and Uses

Agricultural Fees Fund(s) – Egg Inspection

Sources: An annual license fee of \$20 is collected from each egg distributor, an annual license fee of \$5 from each egg candler, and an assessment not to exceed 4 mills per dozen on eggs (Section 37-1523 and 37-1523A, Idaho Code).

Uses: All moneys collected by the director of the Idaho Department of Agriculture for this fund are used exclusively for inspection, administration and enforcement of the Egg Products Act (Section 37-1519, Idaho Code).

Agricultural Fees Fund(s) – Organic Food Products

Sources: Registration fees, gross organic sales fees, inspection, and mileage fees from program participants (Section 22-1106, Idaho Code).

Uses: All moneys collected by the director of the Department of Agriculture are used exclusively for the inspection and administration of the Organic Certification Program through the organic food advisory council (Section 22-1107, Idaho Code).

Agency Funds – Sources and Uses

Agricultural Fees Fund(s) – Commercial Fisheries

Sources: The department is authorized to charge a license fee of \$25 biennially for commercial aquaculture facilities (Section 22-4602, Idaho Code). License fees and fines collected under this section are deposited in the Commercial Fisheries Fund (Section 22-4605, Idaho Code). Any person violating the provisions of the commercial fish facilities chapter shall be subject to a penalty not to exceed \$1,000 (Section 22-4604, Idaho Code).

Uses: The moneys in the Commercial Fisheries Fund are used to pay for facilities inspections, disease prevention and control, marketing, and research for commercial fisheries (Section 22-4603, Idaho Code).

Agricultural Fees Fund(s) – Poultry Inspection

Sources: H206 of 2011, the Poultry Environmental Act, created the Poultry Inspection Program and Fund. This legislation moved the responsibility and oversight of current and future poultry operations from the Department of Environmental Quality to the Idaho State Department of Agriculture (ISDA). The funding source for this program is from a fee established in code of up to \$0.03 per square foot of the facility to be inspected (Section 25-4010, Idaho Code).

Uses: As of 2012, one poultry facility had been established that statute required ISDA inspection. The agency sees the potential additional facilities as the market grows. Initial FY 2013 funding provided for the equivalent of one position statewide. The ongoing budget includes \$36,000 for salary and benefits, and \$17,500 for travel, space charges, and other operating expenditures for a total of \$53,500.



Agency Funds – Sources and Uses

Industrial Hemp Administration Fund (also known as Agricultural Fees Fund(s) – Hemp)

Sources: The industrial hemp development fund shall be credited the revenues derived from fees for registrations, inspections, and shipping fee reimbursements, and civil penalties collected as authorized by H0126 of 2021, as well as Section 67-2921, Idaho Code, and the rules promulgated under that section.

Uses: Moneys in the fund shall be used solely for carrying out the provisions of this chapter and the provisions of Section 22-1705, Idaho Code. Uses include administration fees, inspections, registrations, and shipping sample costs.



Agency Funds – Sources and Uses

Invasive Species Deficiency Warrant Fund

Sources: Whenever the director declares an emergency, as provided in Section 25-212, Idaho Code, the director shall cause the disease to be controlled and eradicated, using such funds as have been appropriated or may hereafter be made available for such purposes; provided, that whenever the cost of disease control and eradication exceeds the funds appropriated or otherwise available for that purpose, the State Board of Examiners may authorize the issuance of deficiency warrants against the General Fund for up to \$5,000,000 in any one year for such disease control and eradication (Section 25-212A, Idaho Code).

Uses: The director, in executing the provisions as it relates to disease control and eradication, shall have the authority to cooperate with federal, state, county and municipal agencies and private citizens in disease control and eradication efforts; provided, that the state funds shall only be used to pay the state's share of the cost of the disease control and eradication efforts. Disease control and eradication costs may include costs for inspection, diagnosis of disease, indemnity paid to owners for infected, exposed or disease susceptible animals purchased and destroyed by order of the director, costs associated with burial or disposal of animal carcasses, and costs for cleaning and disinfecting of infected premises. Such moneys as the state shall thus become liable for shall be paid as a part of the expenses of the Department of Agriculture out of appropriations which shall be made by the Legislature for that purpose. In all appropriations hereafter made for expenses of the Department of Agriculture, account shall be taken of and provision made for this item of expense.

Agency Funds – Sources and Uses

Seminars and Publications Fund

Sources: For the Marketing Division, the agency receives moneys from private industry and a regional non-profit trade association on a cost-recovery basis. For the Animal Health Division, the agency receives revenue from the sale of trichomoniasis media test pouches.

Uses: For the Marketing Division, the agency uses funding to sponsor domestic and foreign trade shows and exhibitions, special product promotions, publications and seminars which are conducted for the benefit of private companies, agri-food organizations and trade associations. For the Animal Health Division, the agency uses funding to purchase of trichomoniasis media test pouches.

Quality Assurance Laboratory Services Fund

Sources: Moneys from donations from commodity commissions and laboratory service fees are placed in the Quality Assurance Laboratory Services Fund (Section 22-109, Idaho Code). The laboratory also receives a separate General Fund appropriation.

Uses: Moneys are used to pay salaries and operating costs of the Idaho Food Quality Assurance Laboratory in Twin Falls.

Agency Funds – Sources and Uses

Rural Economic Develop Integrated Freight Transportation Fund

Sources: H874 of 2006 provided \$5,000,000 to the Rural Economic Development and Integrated Freight Transportation Revolving Loan Fund from the one-time General Fund surplus designated for economic development projects throughout the state.

Uses: Moneys are to be used for revolving loans to upgrade, expand, rehabilitate, purchase, or modernize equipment and facilities for short line rail or intermodal freight shipping infrastructure as prescribed (Sections 49-2901 through 49-2905, Idaho Code). This program was transferred from the Department of Commerce and Labor to the Idaho State Department of Agriculture beginning in FY 2008.

Agricultural Fees Fund(s) – Fresh Fruit & Vegetable Inspection

Sources: Upon the request of interested parties, the director of Idaho State Department of Agriculture shall inspect any fruits and vegetables being prepared for shipment. The director is authorized to issue certificates of inspection and determine fees that are deemed reasonable and adequate to cover the cost of the services rendered to parties requesting inspection (Sections 22-803 and 22-704).

Uses: The moneys from this fund are used for inspection and administration.

Agency Funds – Sources and Uses

Revolving Loans Fund

Sources: The director of the Department of Agriculture of the state of Idaho is authorized to make application to and receive from the Secretary of Agriculture of the United States, the trust assets, either funds or property, held by the United States as trustee on behalf of the Idaho Rural Rehabilitation Corporation (Section 57-1402, Idaho Code). Federal funds were allocated to Idaho for rural rehabilitation purposes (Section 57-1401, Idaho Code).

Uses: The director is authorized to enter into agreements with the Secretary of Agriculture of the United States upon such terms and conditions and for such periods of time as may be mutually agreeable for carrying out the purposes of Title I and II of the Bankhead Jones Farm Tenant Act (Section 57-1403, Idaho Code). The department makes loans and grants to farmers and agribusinesses to support agricultural development and rural rehabilitation.

Commodity Indemnity Fund

Sources: Every producer shall pay an annual assessment to the department not to exceed 0.2% of the total value, as determined at the time of first sale of the commodities (Section 69- 257, Idaho Code).

Uses: The Commodity Indemnity Fund shall be used exclusively for purposes of paying claimants in the event a warehouse or dealer fails and paying necessary expenses of administering the Commodity Indemnity Fund.

Agency Funds – Sources and Uses

Seed Indemnity Fund

Sources: The Seed Indemnity Fund shall consist of assessments remitted pursuant to the provisions of the Seed Indemnity Fund law (Section 22-5121, Idaho Code). Assessments shall be paid solely by or on behalf of producers who transfer or deposit for storage a seed crop with a seed buyer.

Uses: The Seed Indemnity Fund shall be used exclusively for paying valid claims and the necessary fees and expenses of the department in carrying out its responsibilities (Section 22-5120(3), Idaho Code).

Federal Grant Fund

Sources: This fund receives federal money from the United States Department of Agriculture, Department of Interior, and Environmental Protection Agency.

Uses: Moneys in this fund are used for projects specified by the federal government. Examples include grants to control noxious weeds, manage Brucellosis in the greater Yellowstone area, control Mormon cricket and grasshopper outbreaks, educating workers about pesticide application, fund the specialty crop marketing program, provide for a pilot animal identification program, support the agricultural statistics program, and provide for emergency management preparedness.

