

Office of Performance Evaluations

We are a nonpartisan
legislative office
that promotes accountability
and confidence in state
government.

§ 67-457 through 67-464



Joint Legislative Oversight Committee

**Provides general
oversight**

**Assigns evaluation
projects**

**Releases reports and
takes action**



What we do

Evaluate state programs and policies

Answer questions about efficiency, effectiveness, and compliance

Make recommendations

Conduct follow-ups

Credibility



Independence and objectivity

Responsiveness

Evidence

Professional standards

Transparency

Success



Our reports are useful to:

the Legislature

state agencies

Idaho citizens

Driving change in...
Education

**K-12 Public
School Buildings**



**Jan.
2022**

**K-12 Classified
Employees**



**Dec.
2022**

Driving change in... Public Health

State Response to Alzheimer's Disease and Related Dementias



Dec.
2020

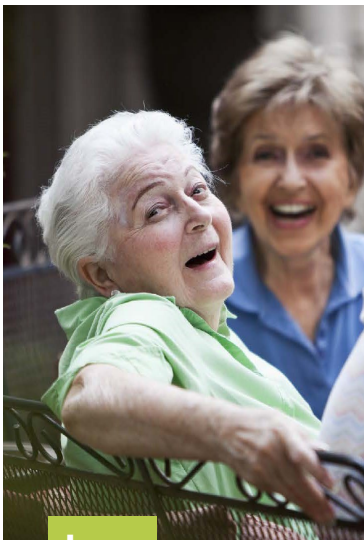
Volunteer Providers of Emergency Medical Services



Nov.
2021

Driving change in... Residential Care

Residential Care



Jan.
2018

Southwest Idaho Treatment Center



Jan.
2019

Governance of Nursing Assistants 24 hr. Review



Office of Performance Evaluations
Idaho Legislature

Rakesh Mohan, Director
rmohan@ope.idaho.gov
208-332-1470

September 20, 2021

Background review of Idaho's Governance of Nursing Assistants

Requested by Senator Dave Lent

Prepared by Ryan Langrill, PhD

Scope of background review

This document is a background review and not an evaluation. Background reviews are used by the Office of Performance Evaluations to respond to a legislator's time-sensitive requests for information. The reviews are typically conducted within 24 working hours and are based on readily available sources. This document does not contain formal findings or recommendations.

Questions addressed

1. What is Idaho's approach to regulating nursing assistants?
2. How does the state's approach affect the occupation and employment of nursing assistants?
3. How do other states govern certified nursing assistants?

Brief answers

1. Idaho statute and rule have no reference to regulating nursing assistants. The Department of Health and Welfare's Bureau of Facilities Standards regulates the subset of nursing assistants who work in nursing homes. Federal law requires this of states. The bureau's activities are similar to those of state licensing boards, such as setting training and examination standards, inspecting and approving training programs, maintaining a registry, and investigating abuse. The lack of a state legal

Sep.
2021

and accountability to state government

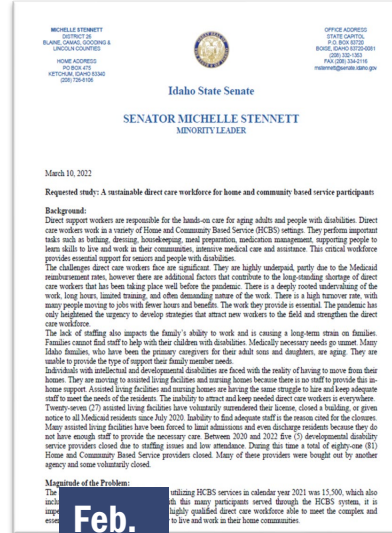
Driving change in... Medicaid

Medicaid Rate Setting



Mar.
2022

Direct Care Workforce



Feb.
2023

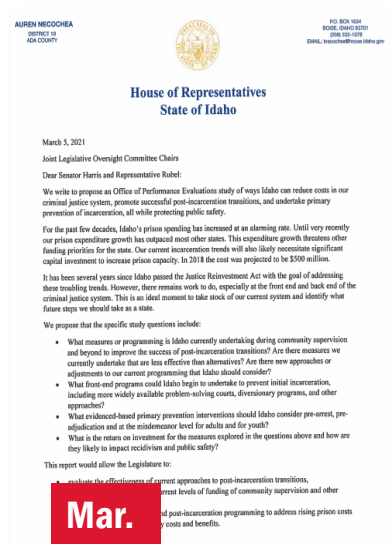
Driving change in... Criminal Justice

Managing Correctional Capacity



Jan.
2020

Criminal Justice



Mar.
2023

Driving change in... **Child Welfare**

Child Welfare System



Feb.
2017

Representation for Children and Youth in Child Protection Cases



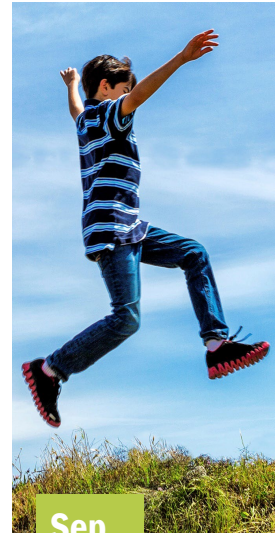
Feb.
2018

Child Welfare System: Reducing the Risk of Adverse Outcomes



Mar.
2018

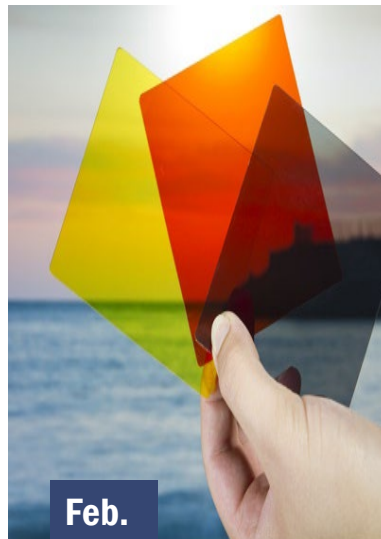
Evaluation and Retention of Child Neglect Referrals



Sep.
2021

Driving change in... **General Government**

Risk of Bias in Administrative Hearings



Feb.
2016

Staff commitment to good government



Principal Evaluator
Amanda Bartlett



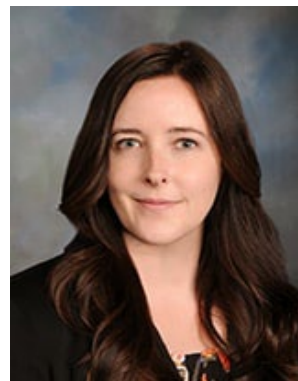
Principal Evaluator
Ryan Langrill



Senior Evaluator
Sasha O'Connell



Senior Evaluator
Casey Petti



Senior Evaluator
Lauren Bailey



Evaluator
Mackenzie Moss

FY24 Request

LBB pg. 6-175

Office of Performance Evaluations

Analyst: Bybee

Historical Summary

OPERATING BUDGET	FY 2022 Total App	FY 2022 Actual	FY 2023 Approp	FY 2024 Request	FY 2024 Gov Rec
BY FUND CATEGORY					
General	983,800	973,100	1,030,000	1,112,200	1,136,700
Percent Change:	0.0%	(1.1%)	5.8%	8.0%	10.4%
BY OBJECT OF EXPENDITURE					
Personnel Costs	910,100	846,800	963,200	1,034,500	1,059,000
Operating Expenditures	67,600	126,300	66,800	73,700	73,700
Capital Outlay	6,100	0	0	4,000	4,000
Total:	983,800	973,100	1,030,000	1,112,200	1,136,700
Full-Time Positions (FTP)	8.00	8.00	8.00	8.00	8.00

